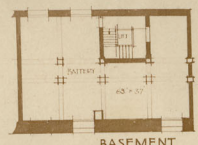


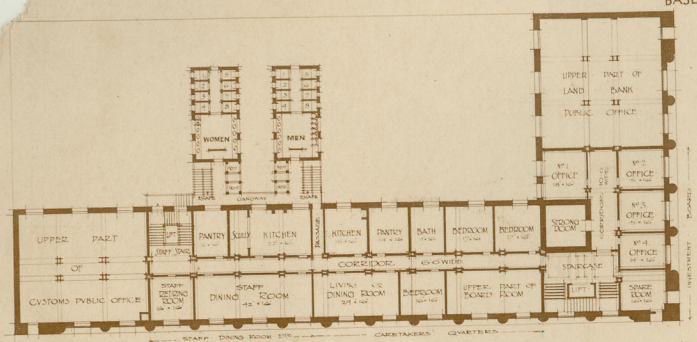
2 & 3, DU TOIT BUILDING,
230, PRETORIUS ST.,
PRETORIA.
ALAN YATES,
COMMERCIAL PHOTOGRAPHER.

Kim Ruisley
1 1/2" base to day

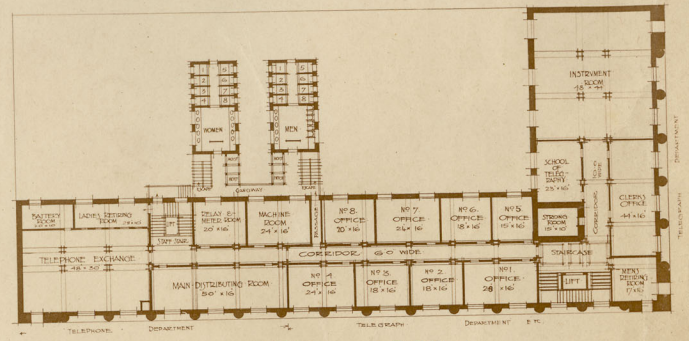
I think (read) that it says E.M.P. delt.
(E.M. Powers?)



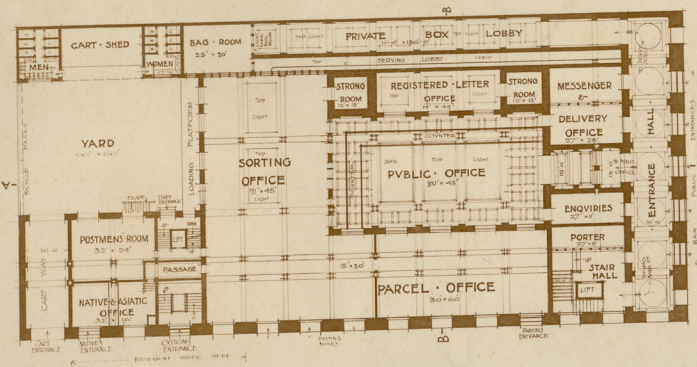
BASEMENT



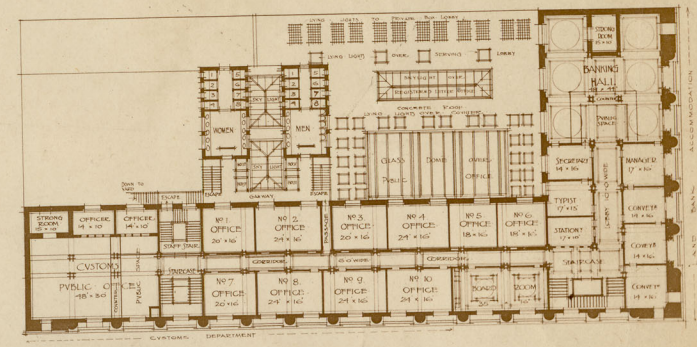
MEZZANINE FLOOR
BETWEEN FIRST & SECOND FLOORS



SECOND FLOOR



GROUND FLOOR



FIRST FLOOR

probably the Park Pavilion mentioned in
H.E. Lawrence's diary.

Walsall Arboretum. n.d. but looks c1890's/1900's

Walsall
LOCAL HISTORY CENTRE
PHOTOGRAPH
COLLECTION
REPRODUCTION

1591a

Junior & Infants School, (opened 1904)
Walsall

Archd H.E. Lavender

Walsall
LOCAL HISTORY CENTRE
PHOTOGRAPH
COLLECTION
REPRODUCTION

4714

FIG 1. (WALKER)

ETONIA 0005
LADIA
LADIA

Departement van Publike Werken. Group photo. S.W. Wierda centre. The names of many of the others are indicated in this photograph. nos 11 & 12 are Kraan and Wyers (Weijers). back row, extreme right.

15507