

PLATE 1 1. Brain of Dog 34. Haemorrhagic and malacic areas in various parts of the brain. Animal died after receiving three doses of 10.5 mg/kg/day of Bernil.

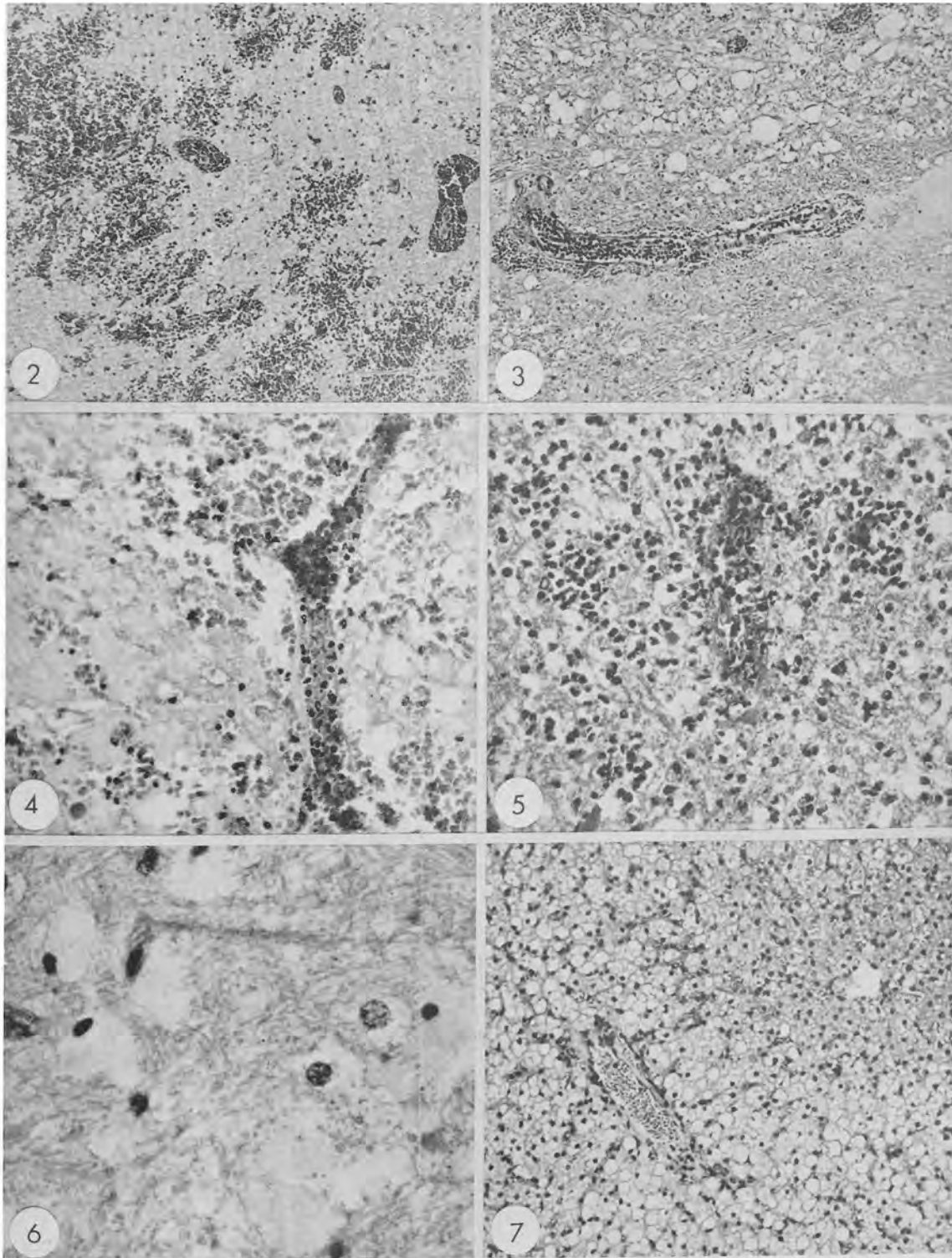


PLATE 2 2. Dog 36 (Table 5): Day 2. Brain: Congestion and haemorrhages. 3. Dog 37 (Table 5): Day 2. Brain: Congestion, mild vasculitis and haemorrhages, oedema and microcavitation. 4. Dog 37 (Table 5): Day 2. Brain: Oedema, haemorrhages, vascular necrosis and very mild neutrophil infiltration. 5. Dog 9 (Table 2): Day 3. Brain: Vascular necrosis and neutrophil reaction. 6. Dog 4 (Table 1): Day 2. Brain: Glial swelling and presence of eosinophilic granules on the right. 7. Ox 3 (Table 7): Liver: Marked peripheral fatty changes.