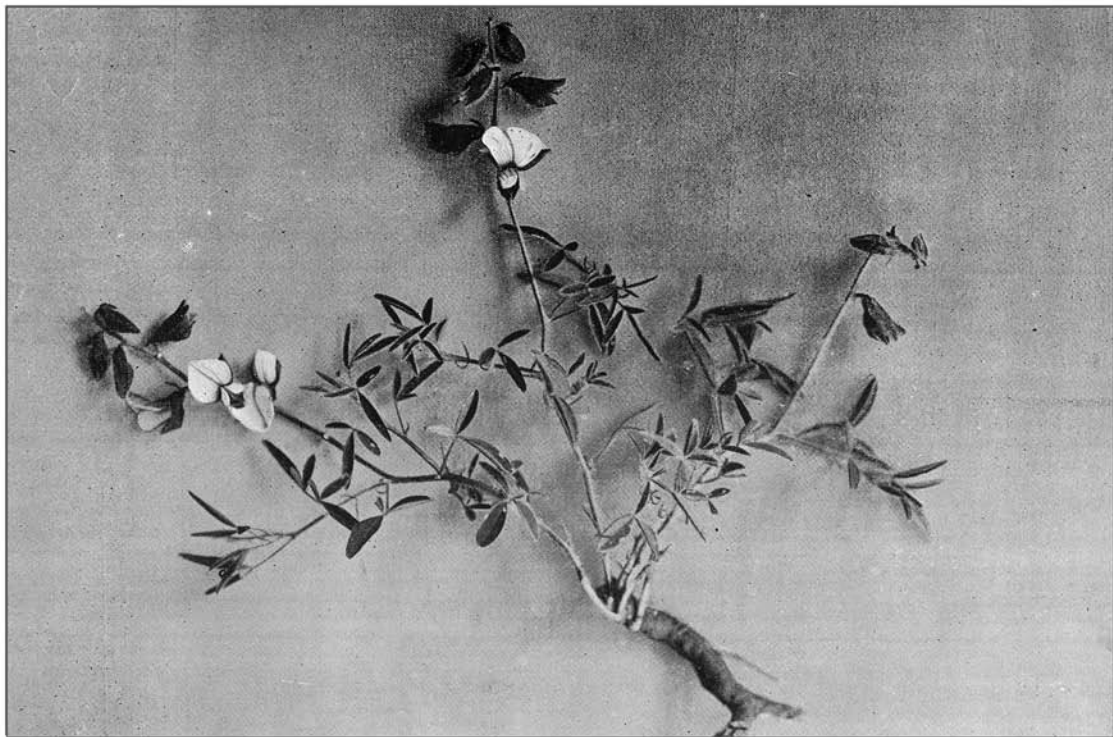




Photo by W. F. Davis, Pretoria.

*Crotalaria burkeana* (Benth)—Fruiting branch.

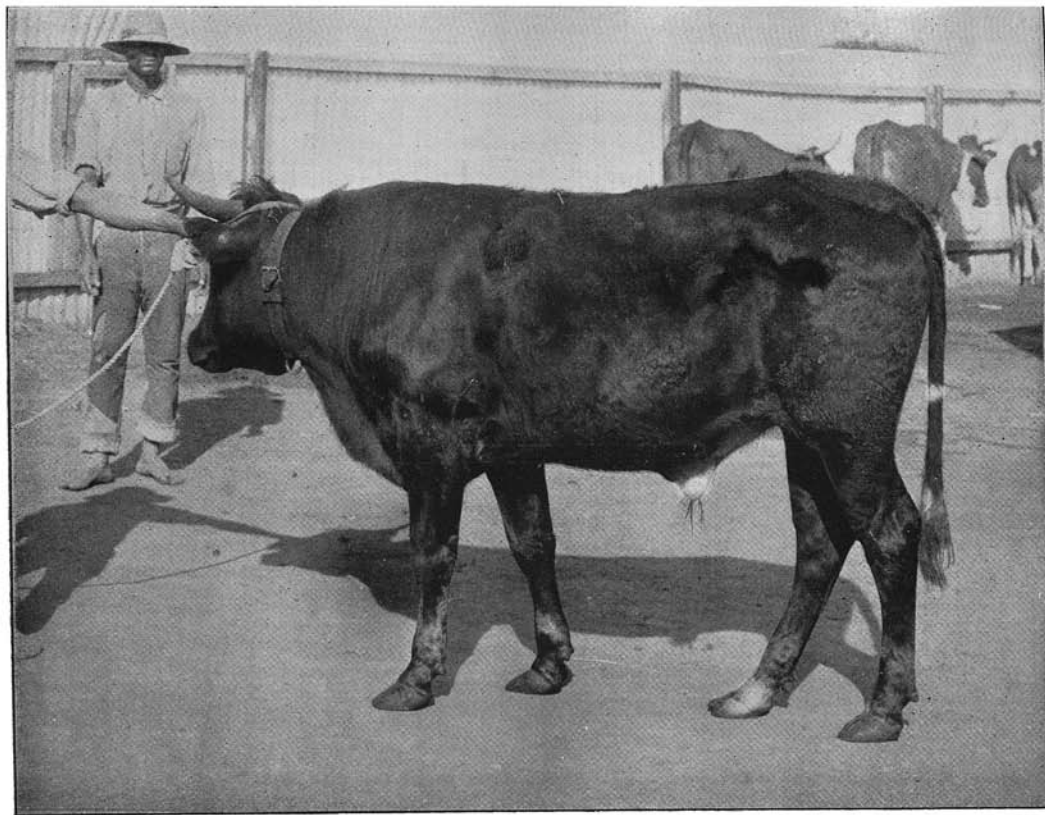
Plate No. 1.



(Photo by A. W. Bayly, Barberton.)

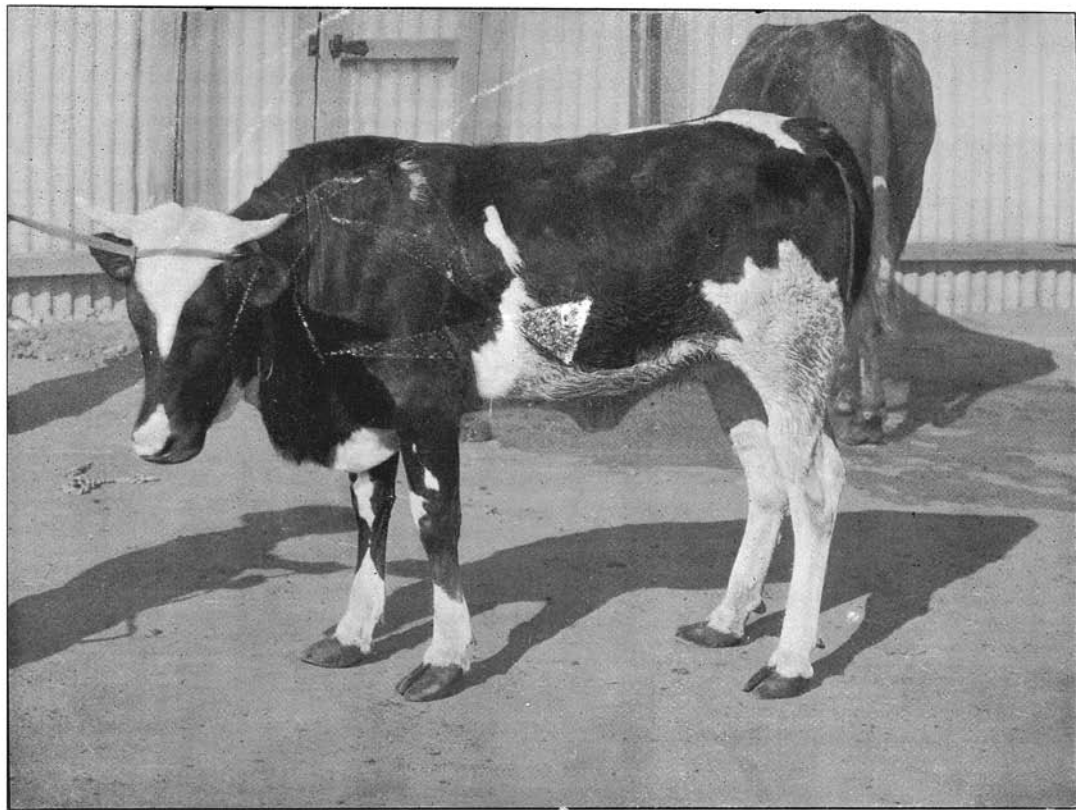
*Crotalaria burkeana* (Benth): Flowering.

Plate No. 2.



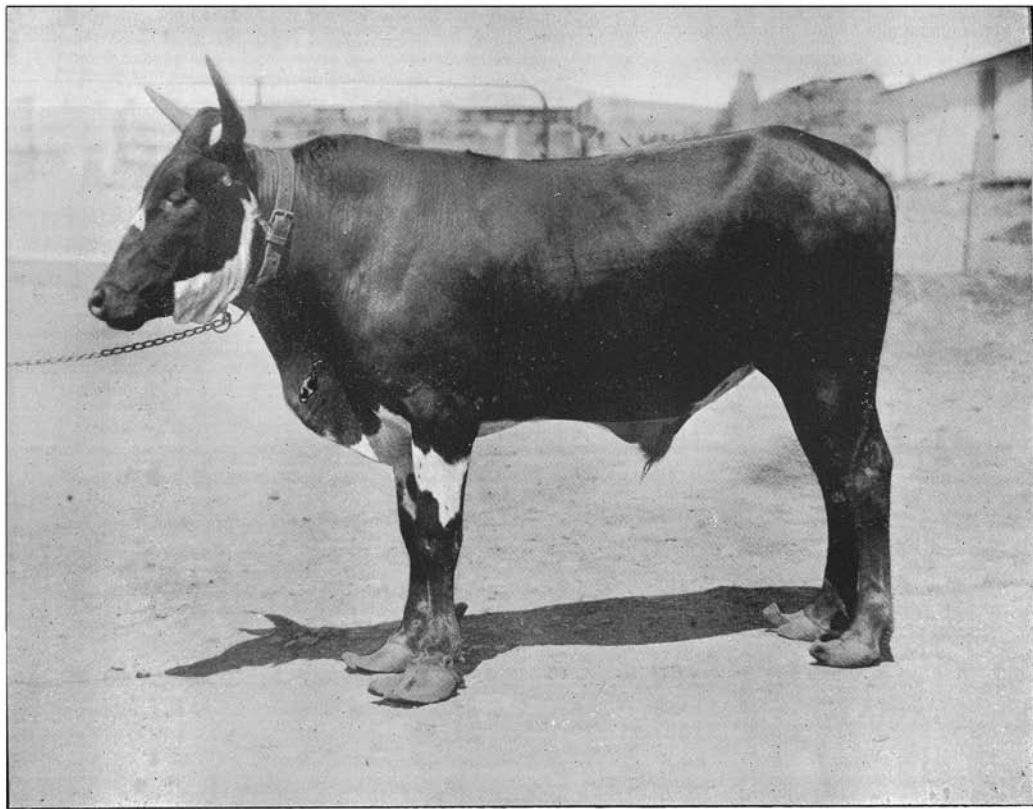
Stiff-Sickness : Commencement of disease ; particularly marked in hind feet.

*Plate No. 3.*



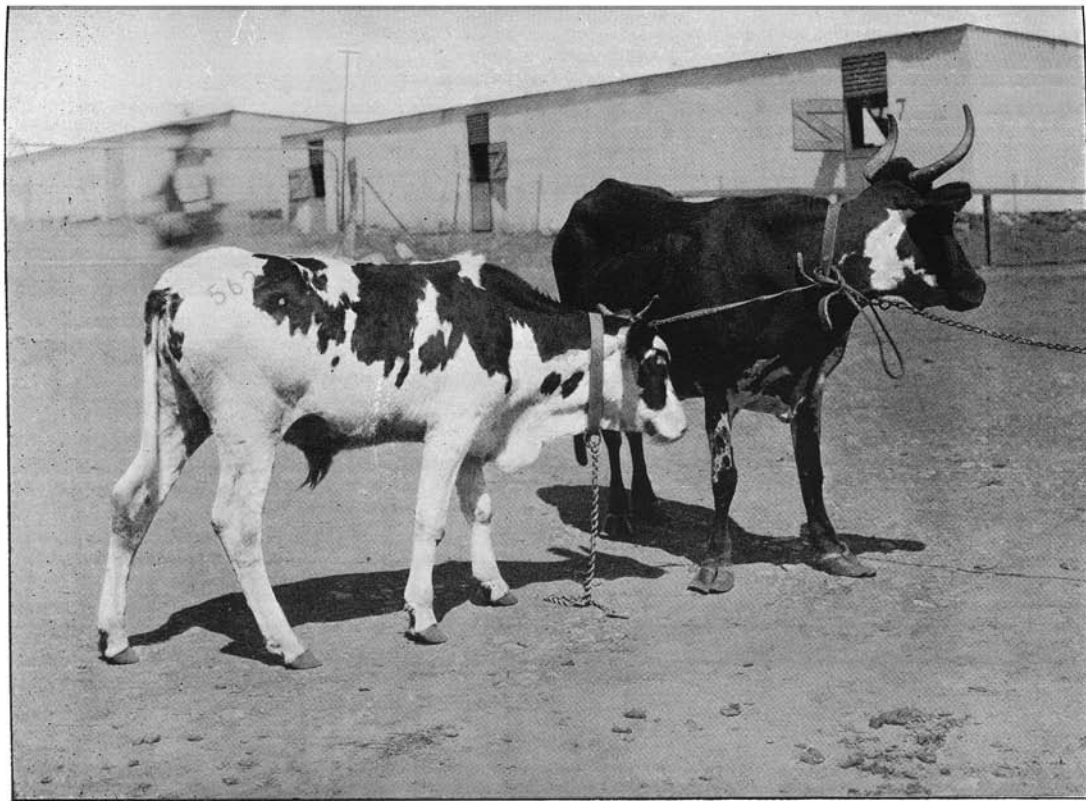
Stiff-Sickness : Advanced stage.

*Plate No. 4.*



Stiff-Sickness : Chronic stage.

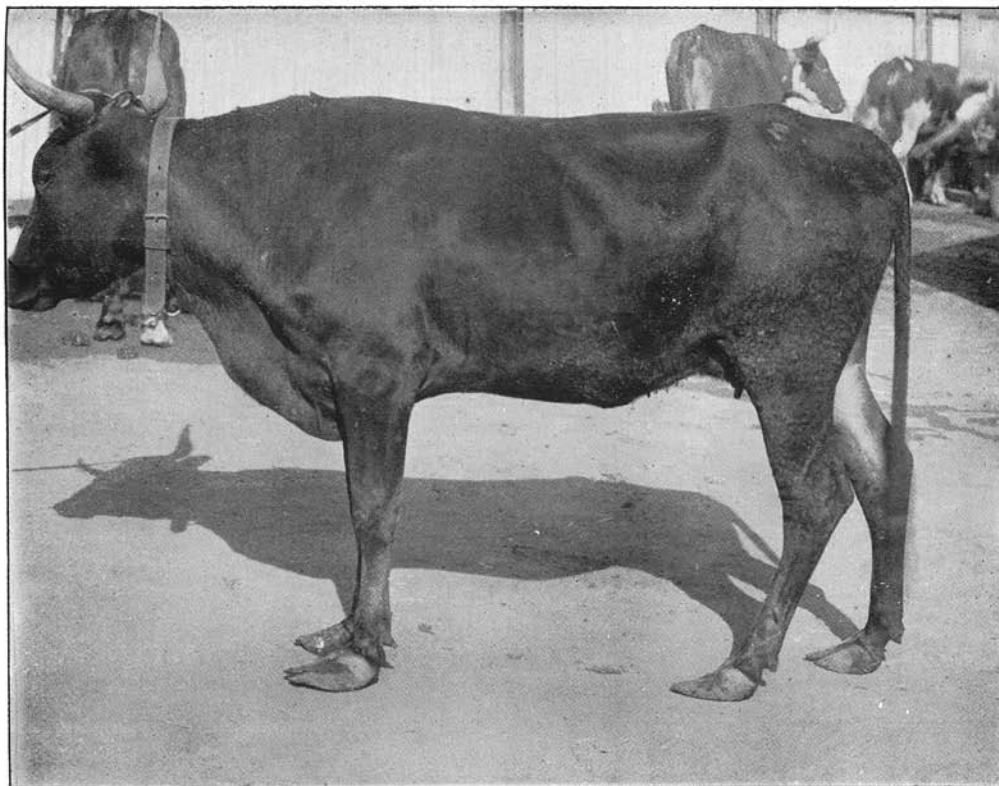
*Plate No. 5.*



Stiff-Sickness : (562) Acute stage.

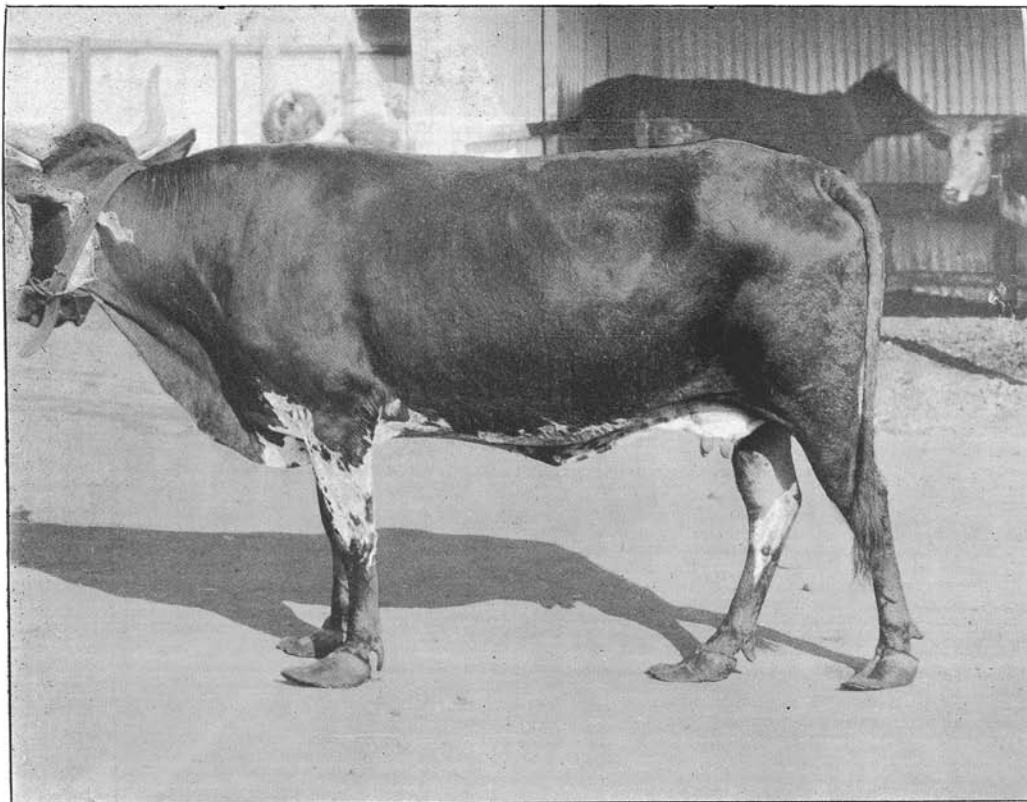
Chronic stage.

*Plate No. 6.*



Stiff-Sickness : Chronic stage.

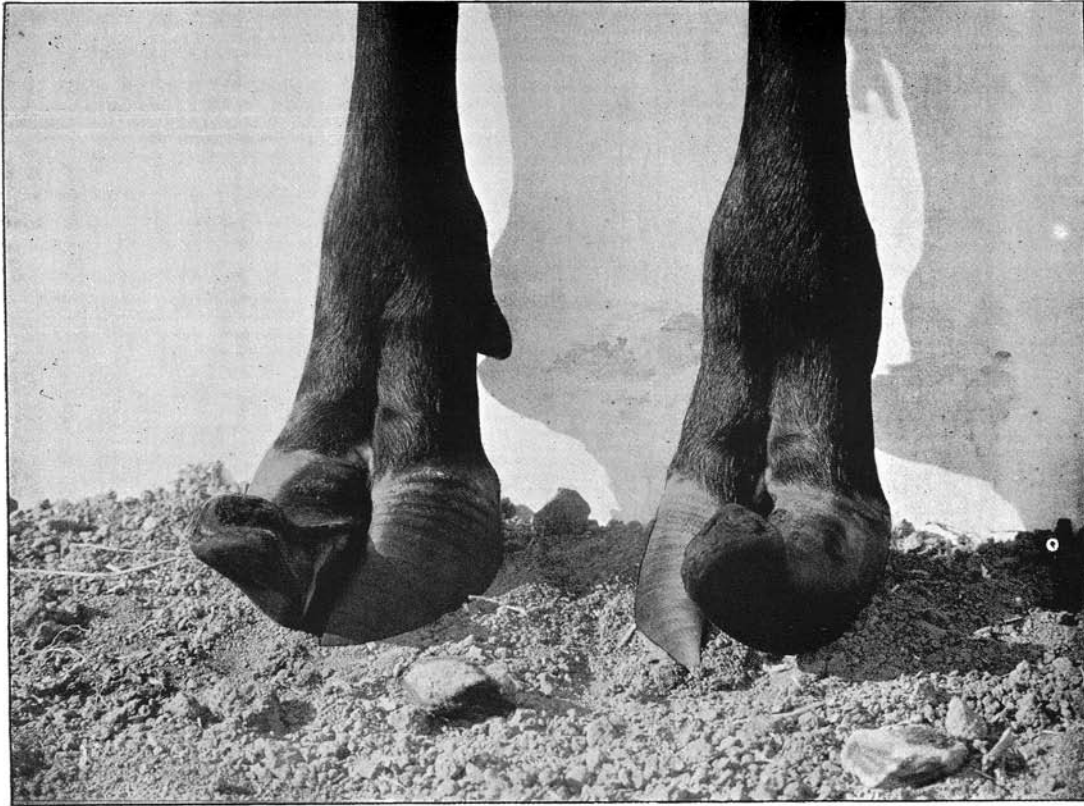
*Plate No. 7.*



Stiff-Sickness : Chronic Stage.

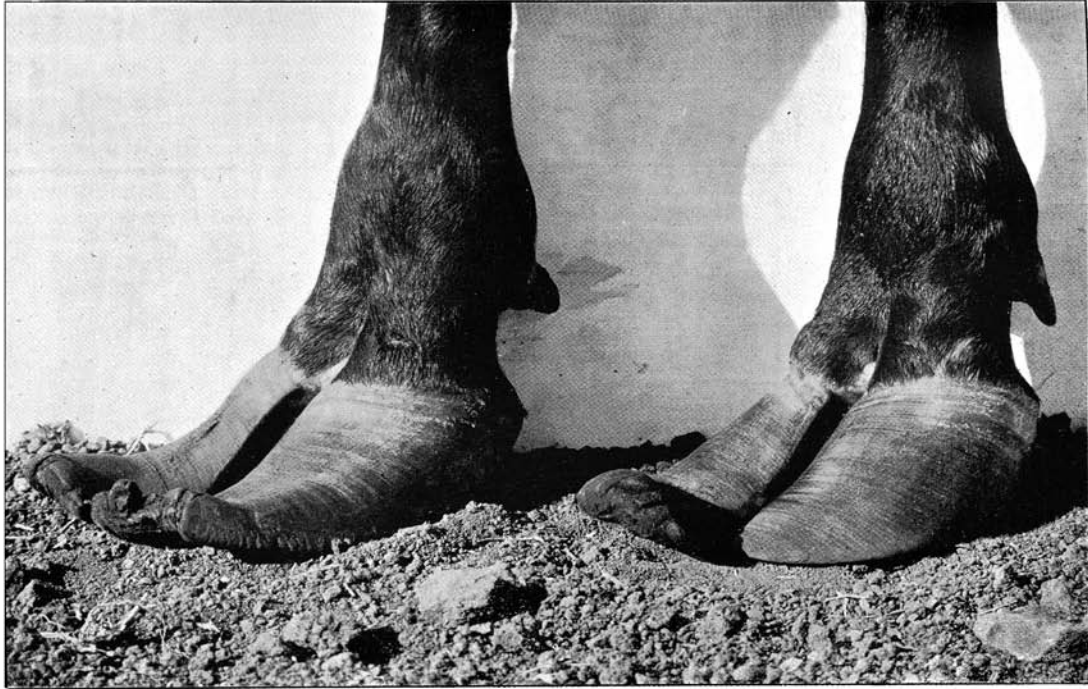
*Plate No. 8.*





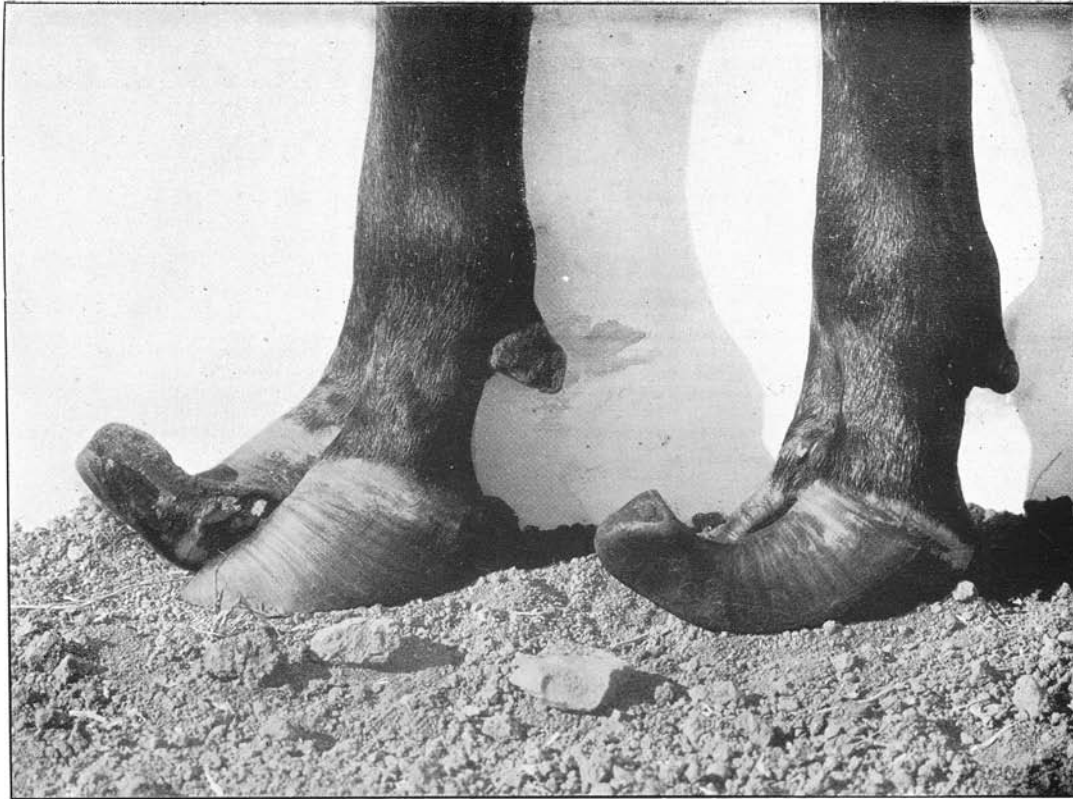
Stiff-Sickness : Hoofs of a Chronic case.

*Plate No. 9.*



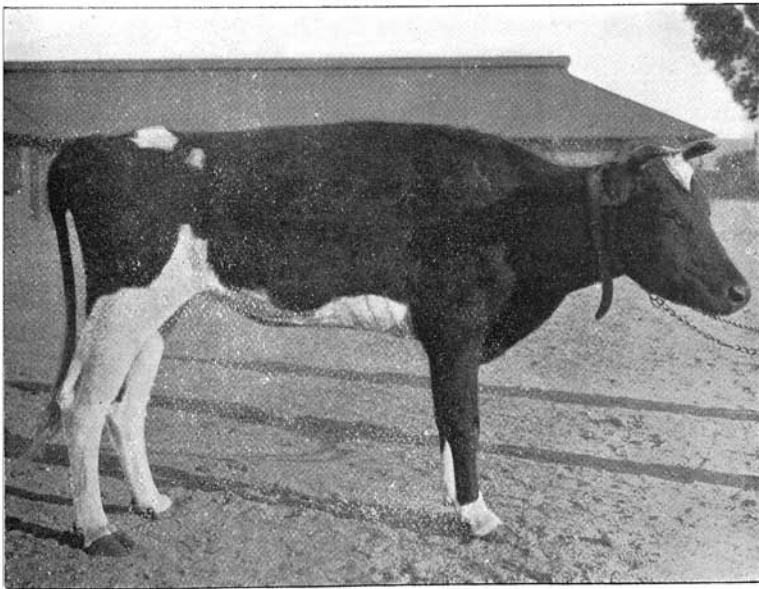
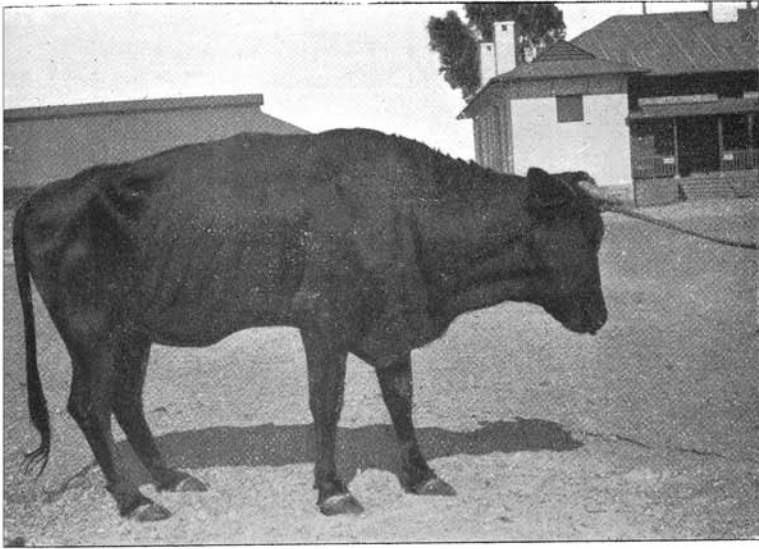
Stiff-Sickness : Hoofs of a Chronic case.

*Plate No. 10.*

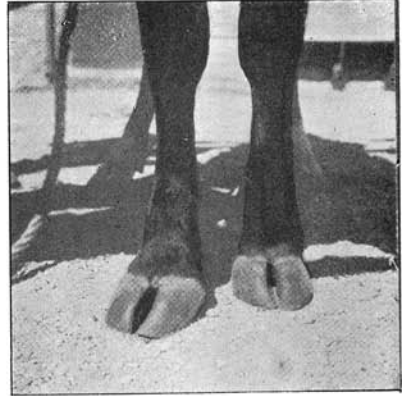
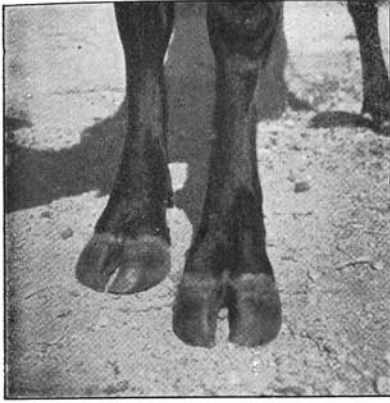


Stiff-Sickness : Hoofs of a Chronic case.

*Plate No. 11.*



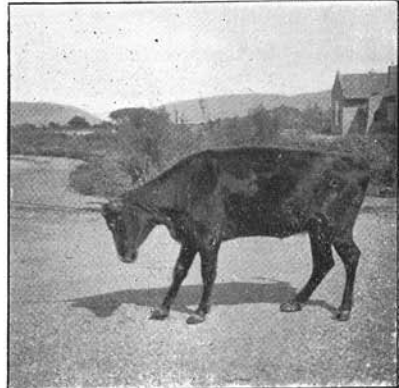
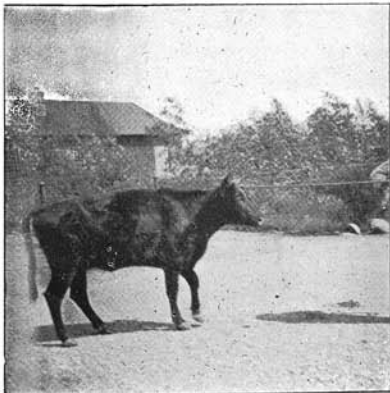
Stiff-Sickness : Acute Cases.



Commencement of separation of digits.



Commencement of separation of digits.



Acute cases of disease.