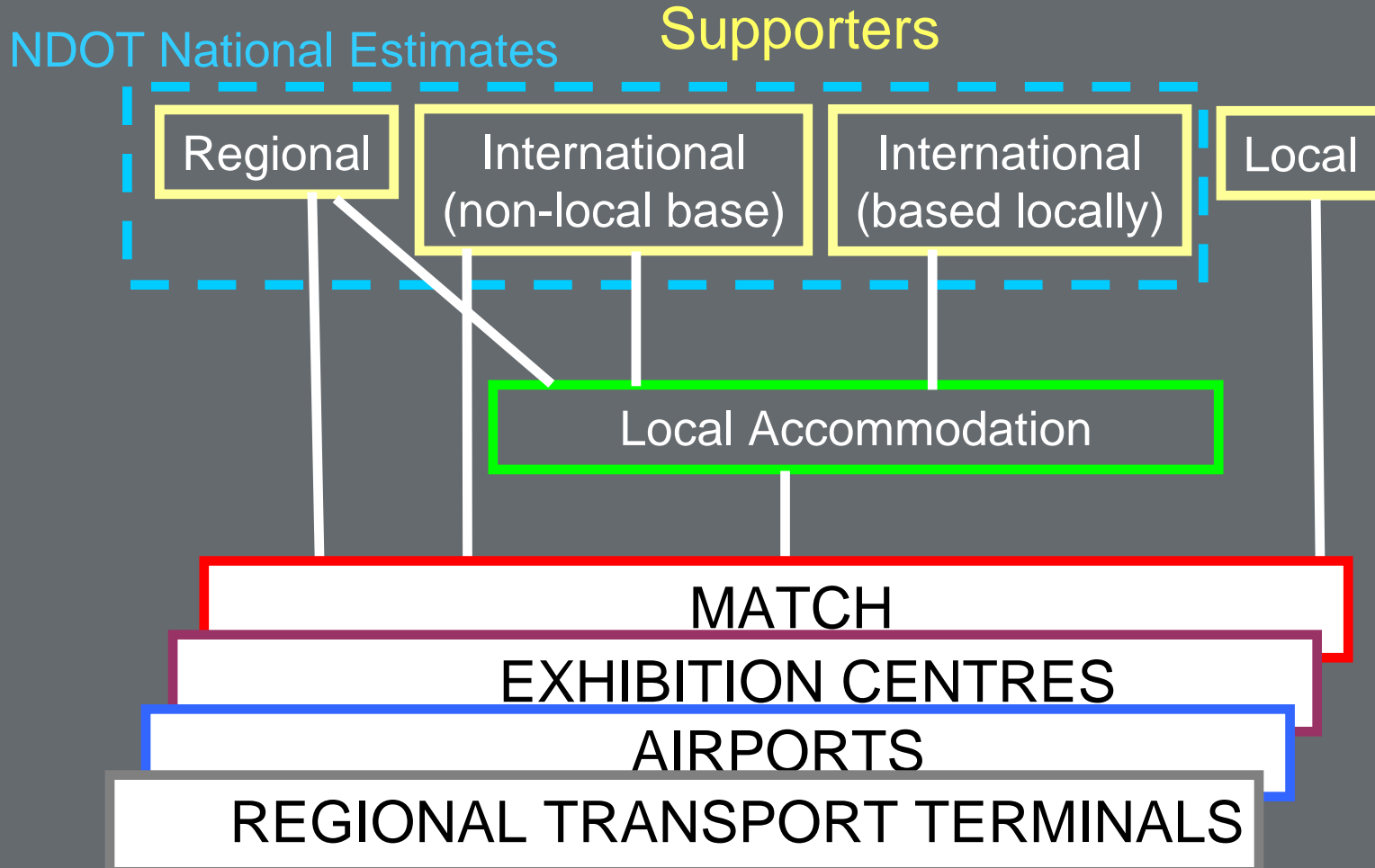




*High Level Transport Plan &
Projects for 2010 Soccer World
Cup*

June 2006



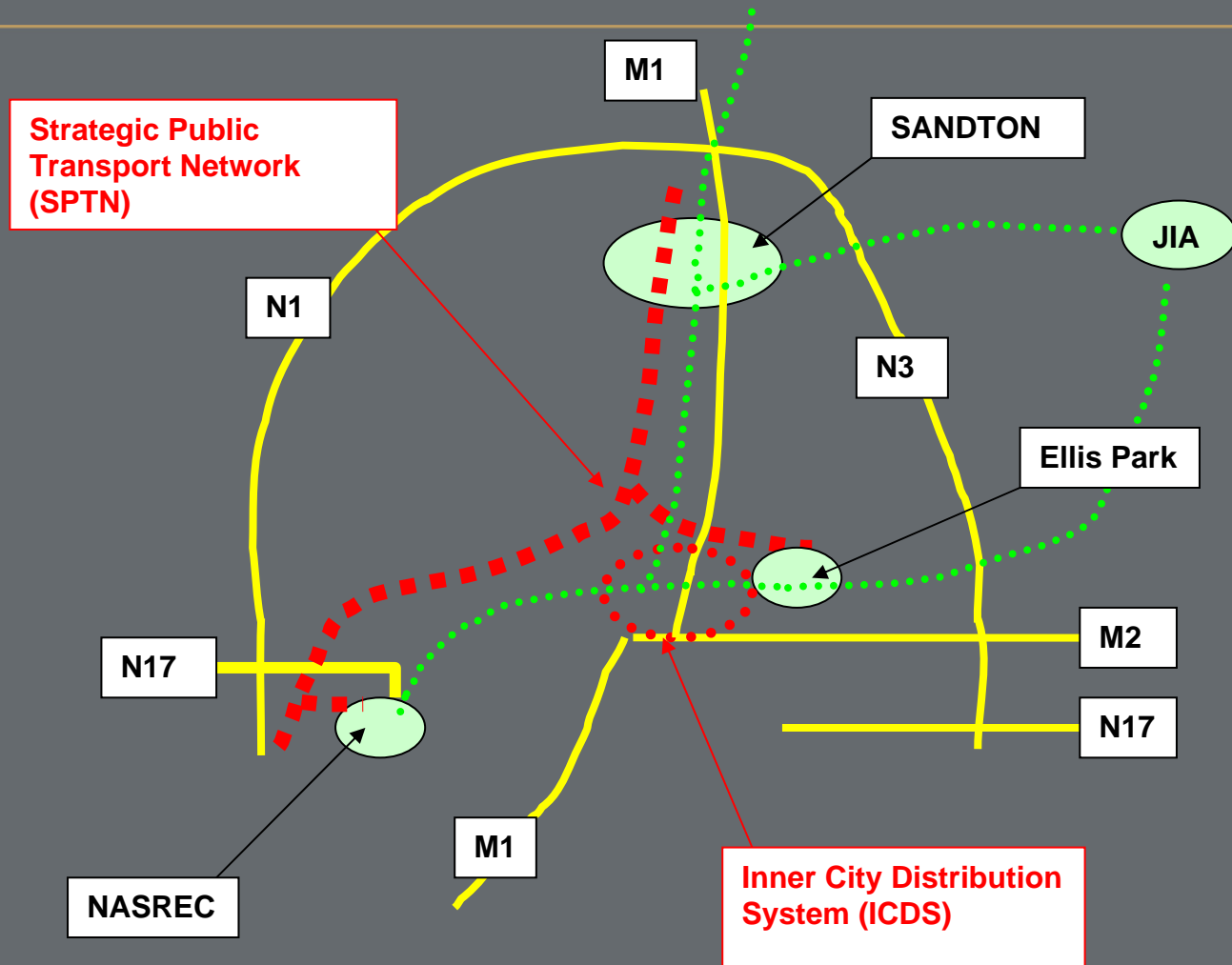


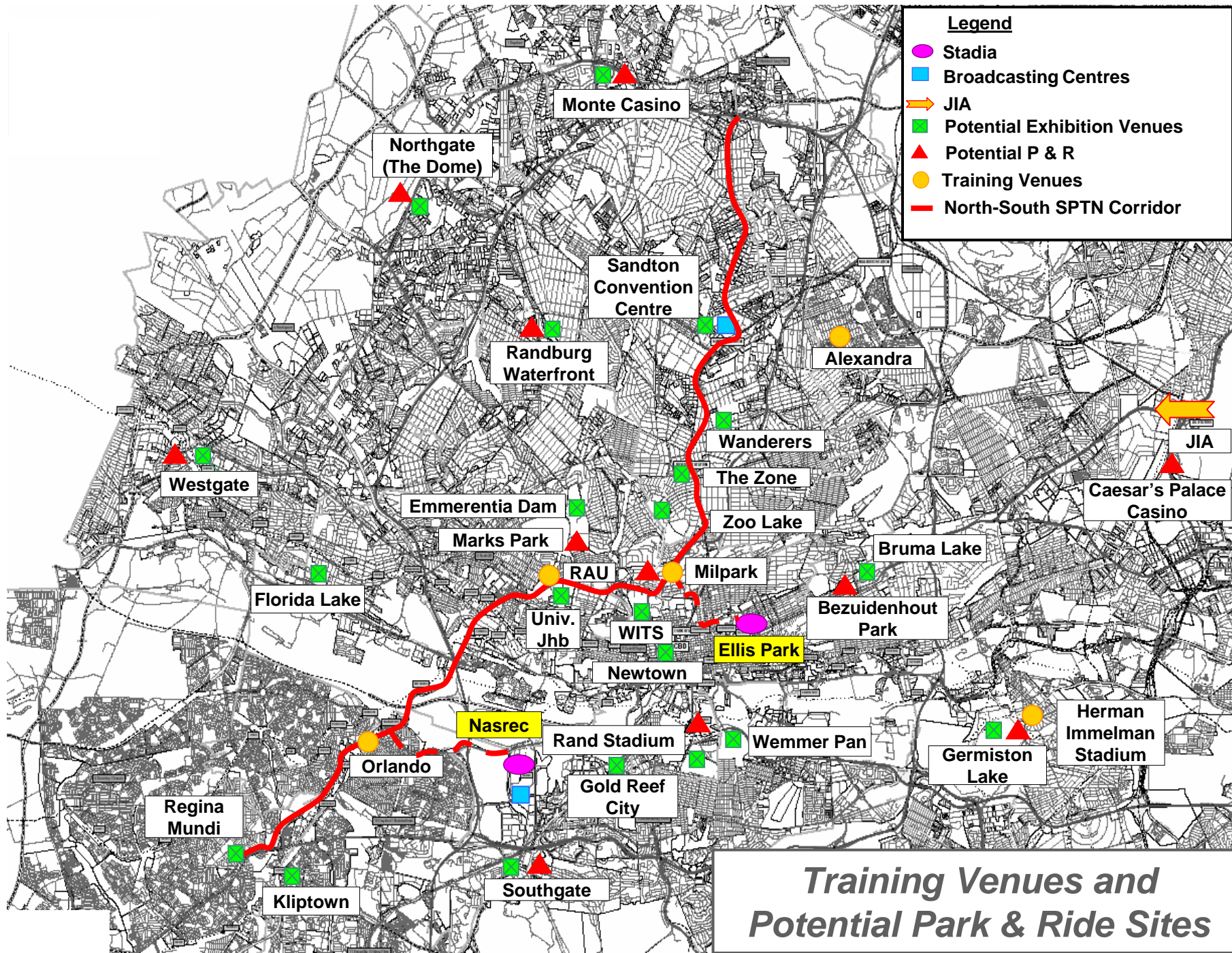
- *Affordability of tickets (Germany: €35 - €600) – participation by non-ticket holders (away from stadia)*
- *Spreading demand over a longer time period*
- *Numerous, smaller venues vs less, but larger venues – spreading services geographically*
- *Cater for 15 000 to 60 000 people*
- *Indoor venues limited, outdoor venues - cold, lighting, security at night*
- *Location on SPTN, with Park-and-Ride facilities*

Demand (3)

- *Busiest day (at NASREC and/or Ellis Park) would be between days 12 and 15, in the group stage, game 3*
 - *200 000 visitors will be accommodated in Gauteng on that day*
 - *International and Regional Spectators: 70% Public ; 30% Private, assumes the splits in the NDOT regional estimates, applied at local level*
 - *Local Spectators: 75% to 95 % Public, assumes successful and comprehensive park & ride*
 - *Assumed 20h00 start and build up from 18h00*
-

Transport supply (1)





Training Venues and Potential Park & Ride Sites

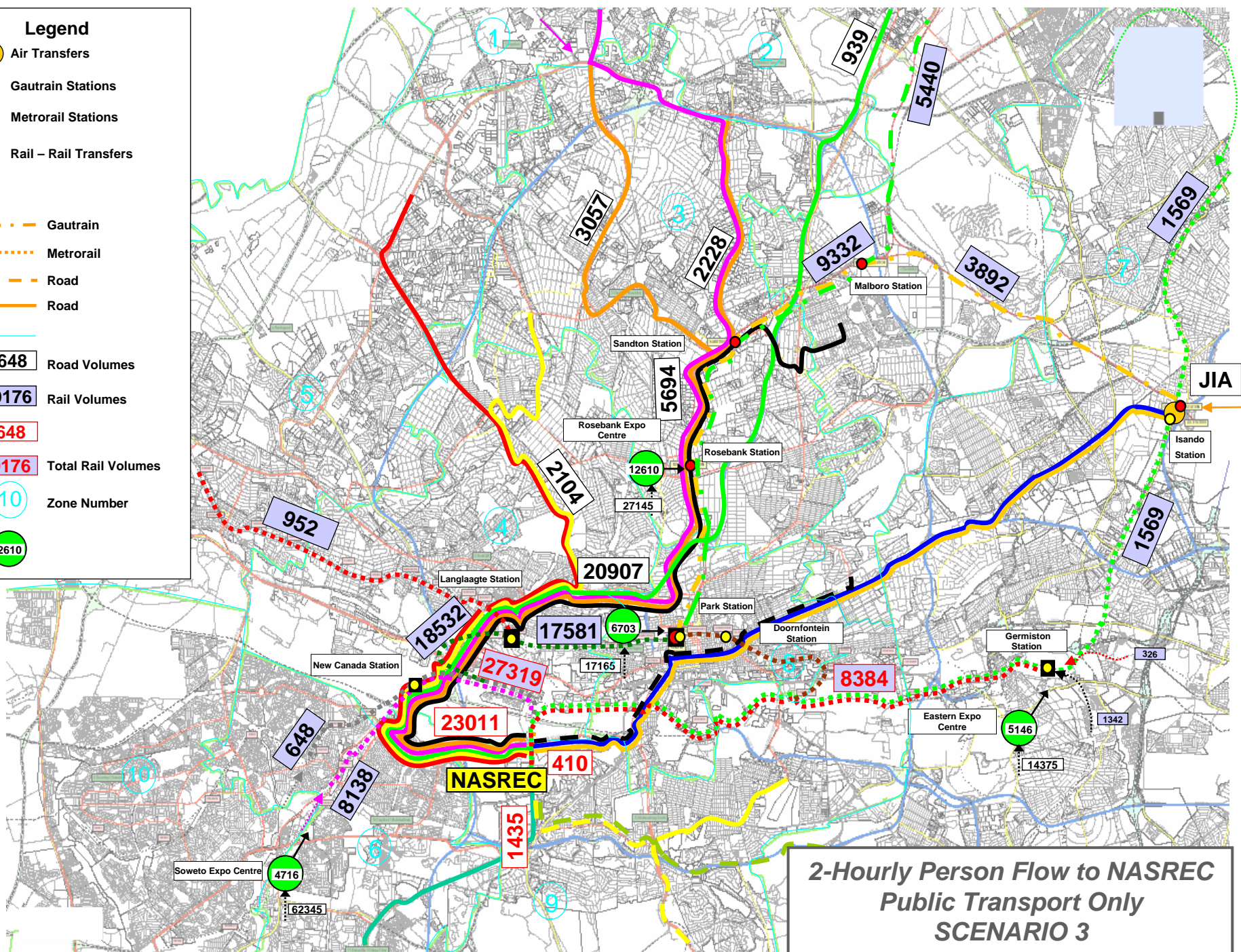
Legend

- Air Transfers
- Gautrain Stations
- Metrorail Stations
- Rail – Rail Transfers
- ◆

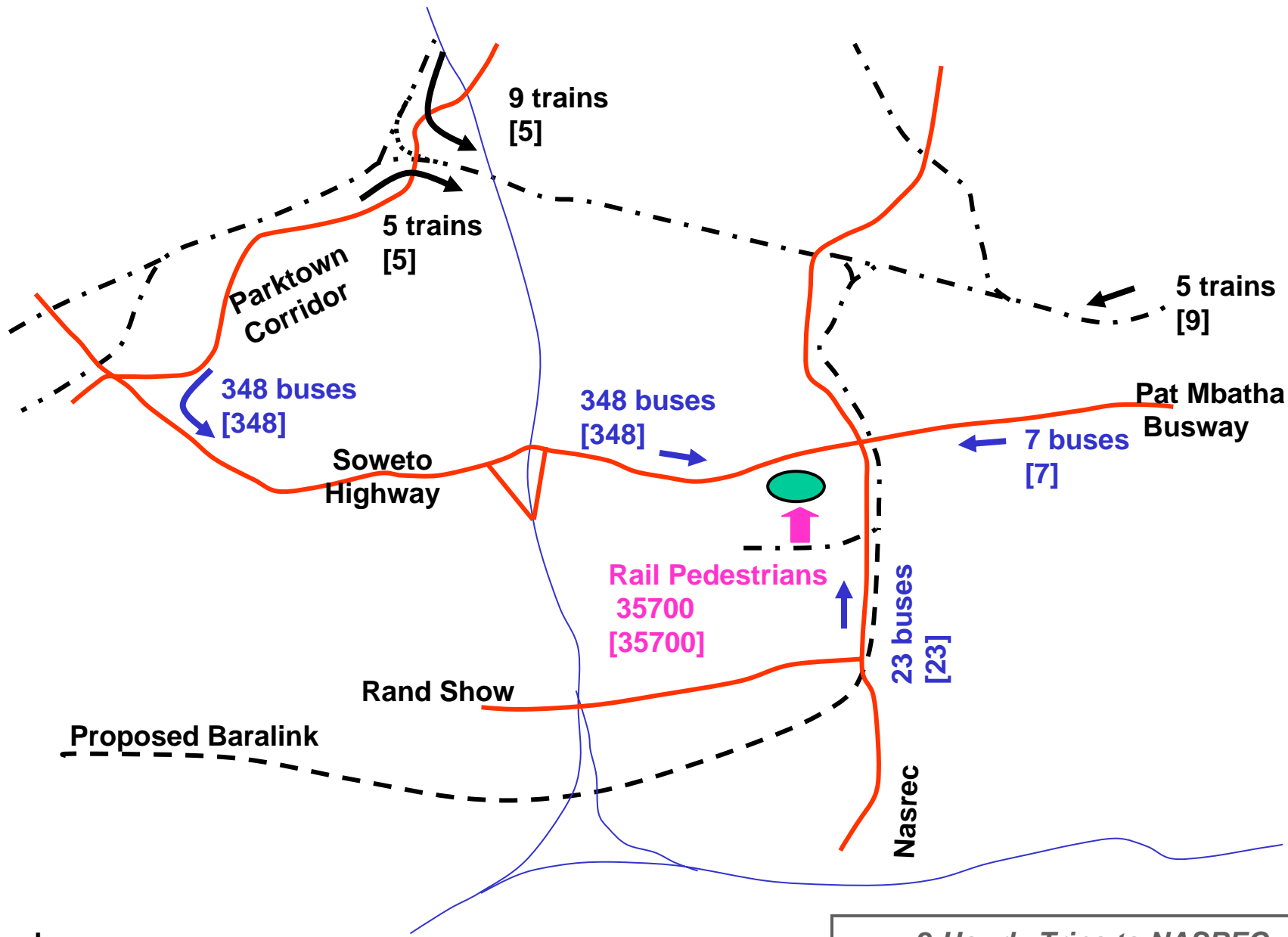
- - - Gautrain
- - - Metrorail
- - - Road
- Road

- 648 Road Volumes
- 9176 Rail Volumes
- 648
- 9176 Total Rail Volumes

- 10 Zone Number
- 12610



**2-Hourly Person Flow to NASREC
Public Transport Only
SCENARIO 3**



Legend

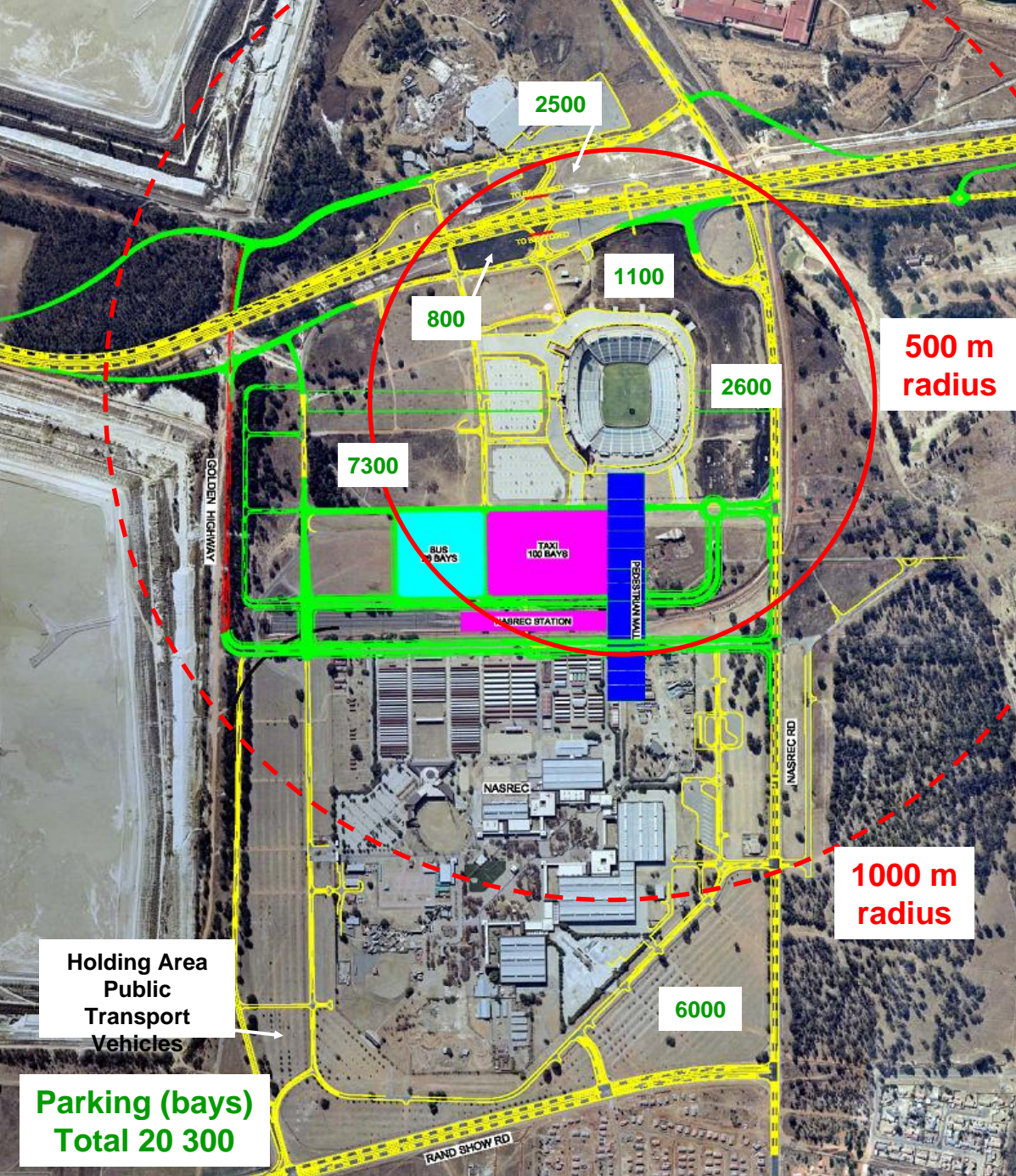
- 348 With Gautrain
- [348] Without Gautrain

*2-Hourly Trips to NASREC
Public Transport Only
SCENARIO 3*

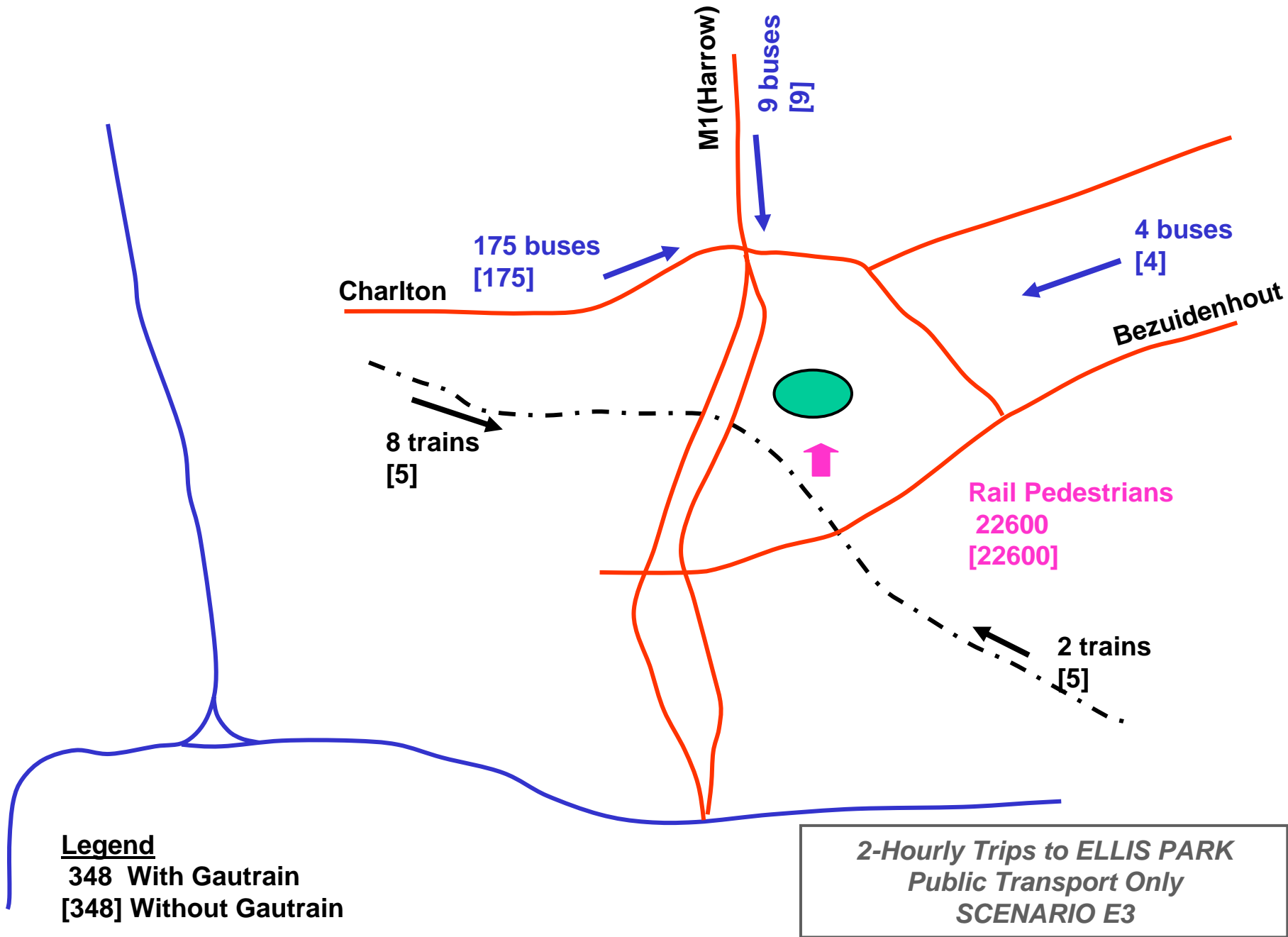
Nasrec

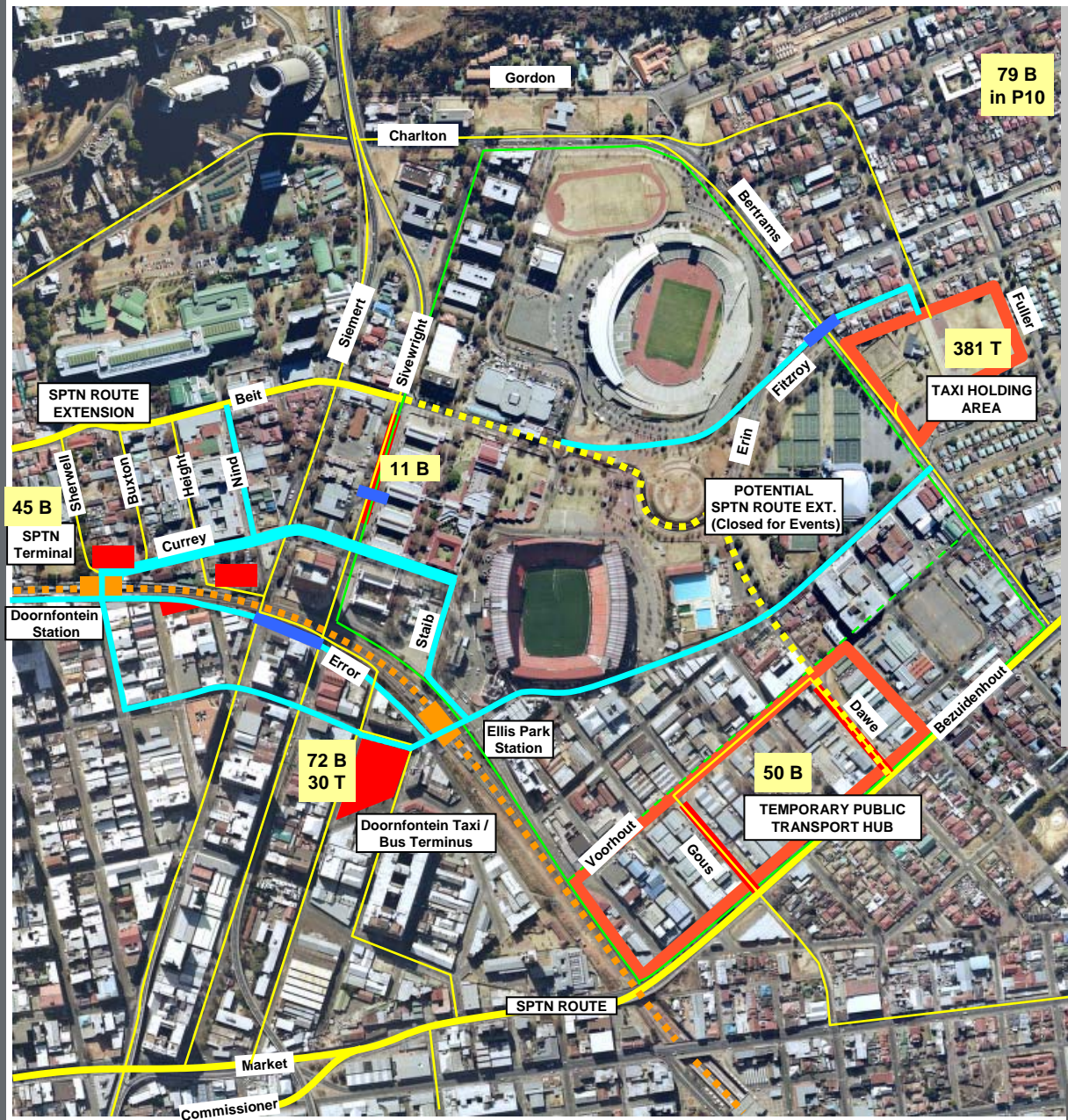
Planned Capacities

- Rail: 20 000/hr, 8m walkway
- Bus: 28 bays – 20 000/hr, 10m walkway
- Minibus-taxi: 100 bays – 15 000/hr, 8m walkway



- : JRA ROAD PROPOSALS
- : PROPOSED ROADS
- ▨ : BUS OFFLOADING ZONE
- ▨ : TAXI OFFLOADING ZONE
- ▨ : PEDESTRIAN MALL





LEGEND

- Vehicle Exclusion Zone
- - - Public Transport Vehicles Only
- Strategic Public Transport Corridor (SPTN)
- · - · - SPTN Route Closed During Events
- Other Public Transport Routes
- ▭ Permanent Public Transport Facilities
- Temporary Public Transport Facilities
- Pedestrian Corridors
- Pedestrian Bridges
- · - · - On-street loading / off-loading
- ▭ Railway Line
- ▭ Stations
- ▭ 72 B
30 T
Number of Buses or Taxis Holding

Ellis Park Summary of Public Transport Plan

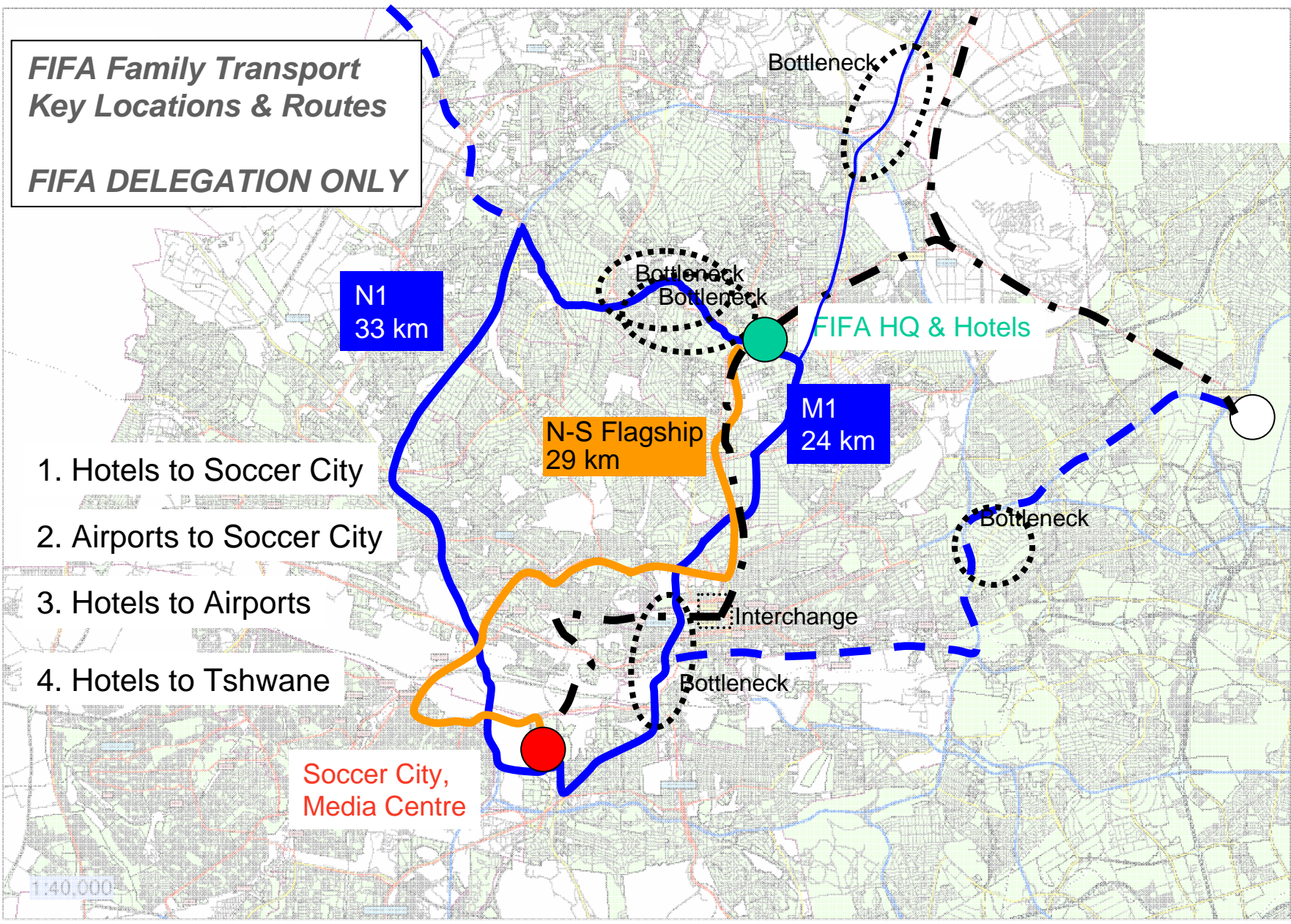
FIFA Family

Joburg

2010 World Cup Transport Plan

**FIFA Family Transport
Key Locations & Routes**

FIFA DELEGATION ONLY



1. Hotels to Soccer City

2. Airports to Soccer City

3. Hotels to Airports

4. Hotels to Tshwane

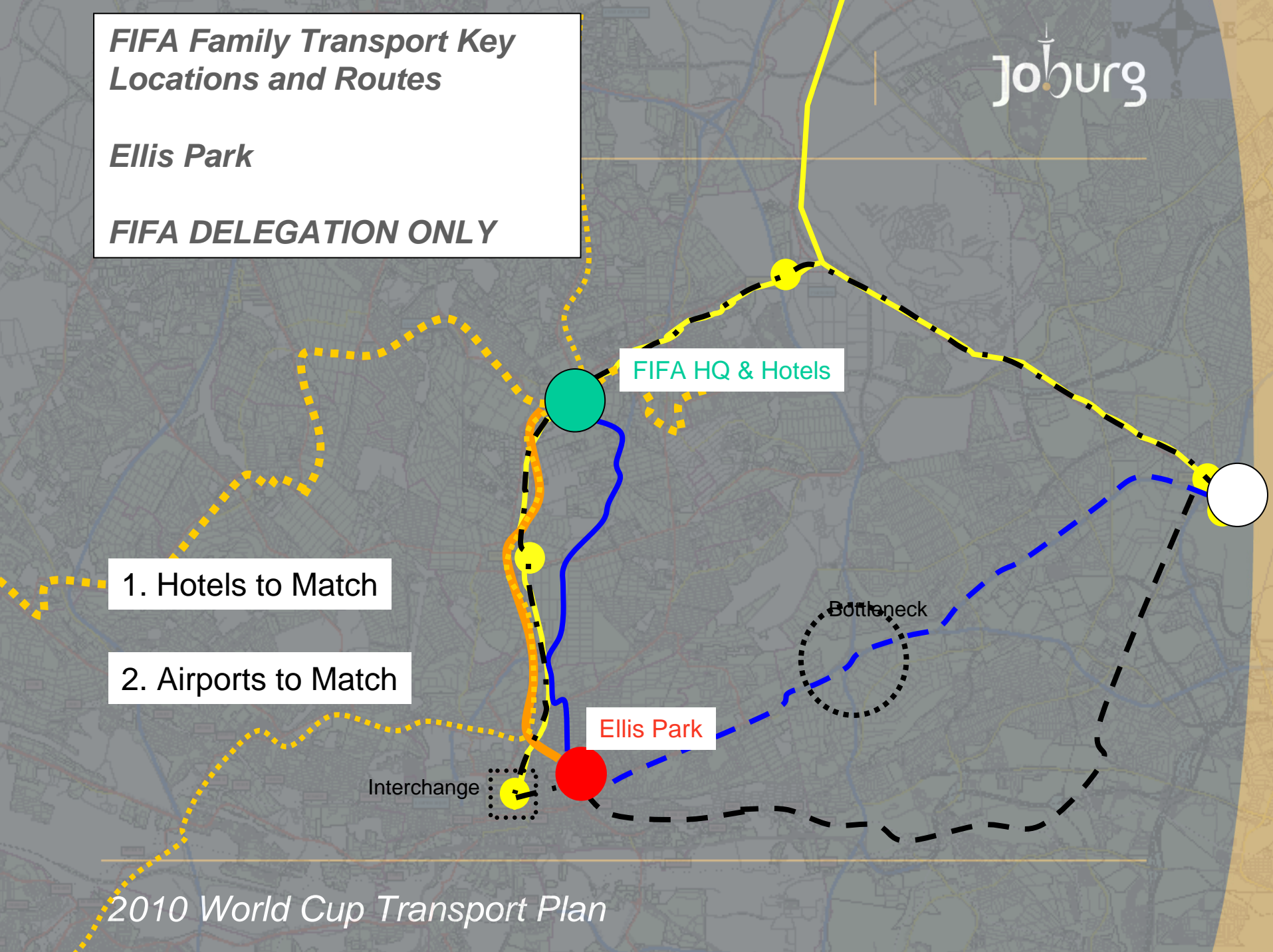
Soccer City,
Media Centre

1:40,000

FIFA Family Transport Key Locations and Routes

Ellis Park

FIFA DELEGATION ONLY



1. Hotels to Match

2. Airports to Match

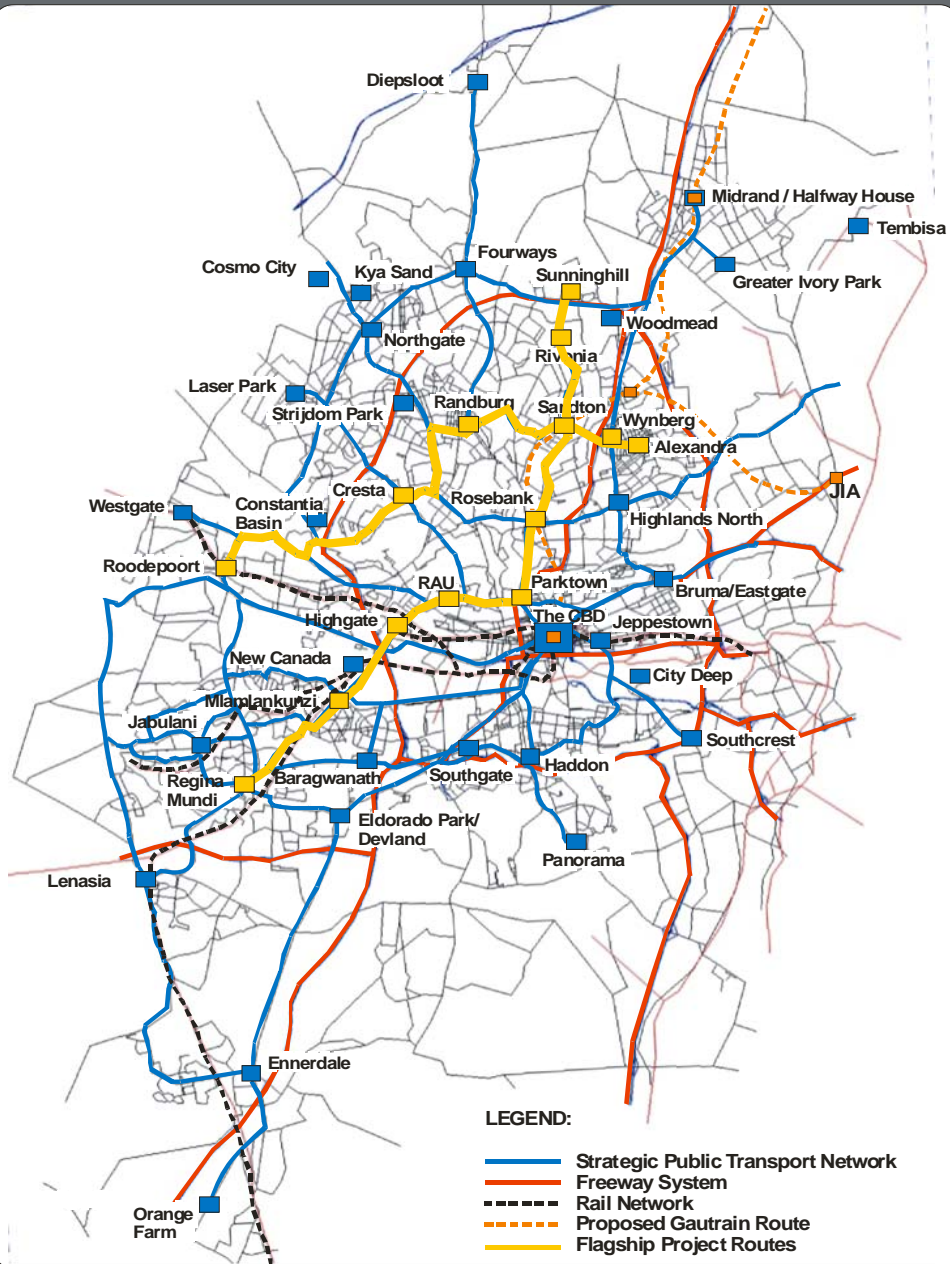
FIFA HQ & Hotels

Ellis Park

Interchange

Bottleneck

- *Strategic Public Transport Network (SPTN)*
- *Inner City Distribution System (ICDS)*
- *International Transit & Shopping Centre (ITSC)*
- *Travel Demand Management (TDM)*
- *Intelligent Transportation System (ITS)*
- *Commuter Rail Extensions*
- *N 17 Freeway Link*
- *Public transport operational plans*
- *Metered taxi upgrading*



SPTN showing Flagship routes

Inner City Distribution System (ICDS)

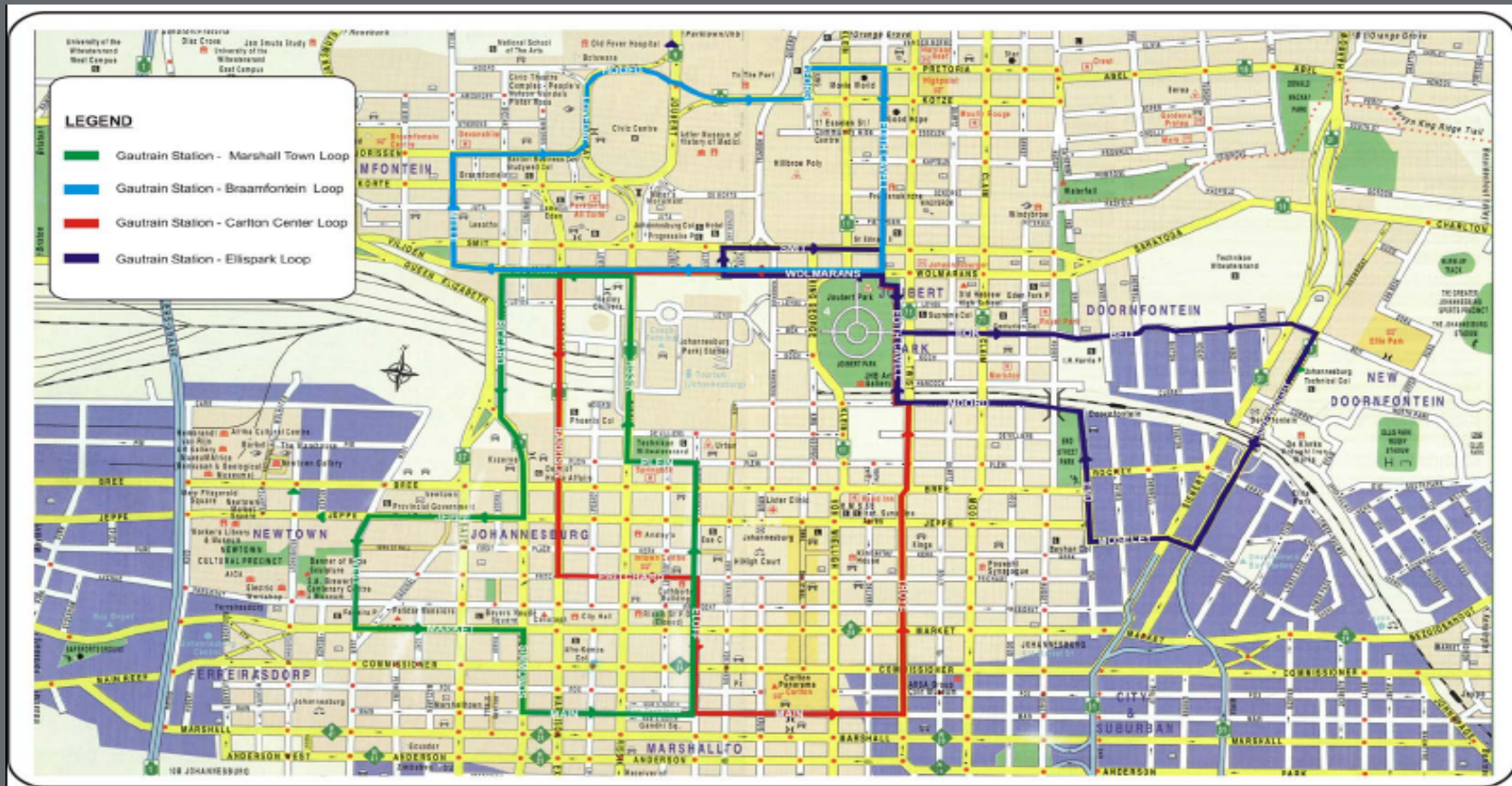


Figure 2-1

Preferred Alignment 9B



- *Johannesburg is the focus of SADC road-based public transport in Southern Africa*
- *Greater Joubert Park area (Park City) is the terminal point for buses and taxis from as far north as the Democratic Republic of Congo*
- *Currently split bus and taxi facilities*
- *With 2010 in mind, the plan is to create a high quality International Transit & Shopping Centre modelled on an airport terminal*

Variable working hours & Ridesharing

- ↪ Surveys undertaken*
- ↪ Pilots in Sunninghill, Braamfontein and elsewhere*
- ↪ TDM Rideshare desk*
- ↪ TDM computerised matching software system*

A number of ITS initiatives are currently in the process of implementation

- ↪ SANRAL Pilot Project on N1*
- ↪ JRA Traffic signal upgrading*
- ↪ CCTV systems in CBD and elsewhere*
- ↪ City Safety Strategy*
- ↪ 2010 Transportation, JMPD & EMS control centre*

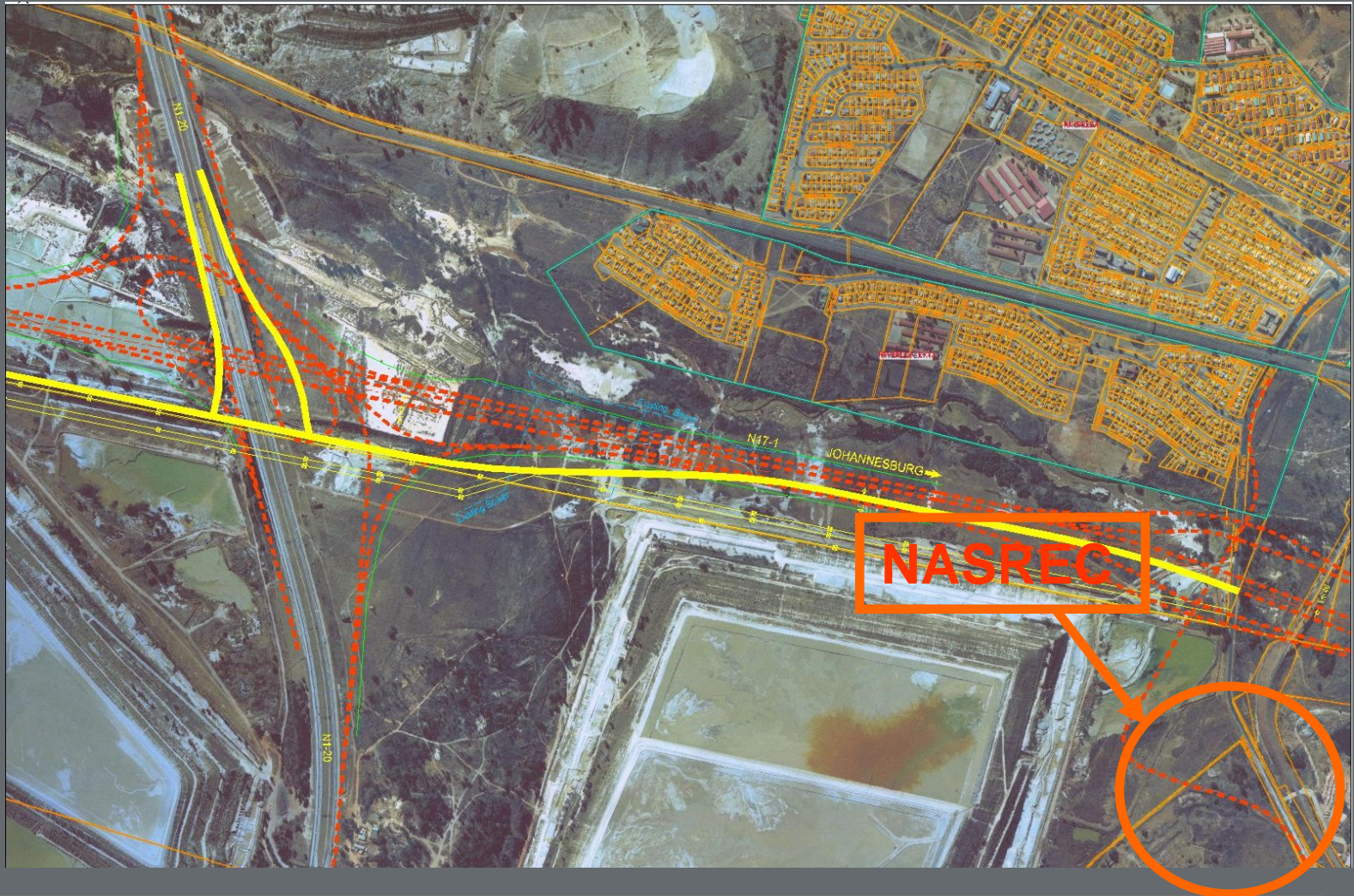
NASREC/Baralink/Nancefield commuter rail extension

↳ Basic planning

NASREC/Park Station/Ellis Park

↳ Premium service linking to Gautrain at Park station

N17 Freeway link



-
- *Private transport operational plans already developed for NASREC and Ellis Park*
 - *Public transport operational plans being developed for NASREC, Ellis Park and 8 training venues*
 - *Emphasis being placed on incrementally implementing park-and-ride services*
 - *Target of 70% public transport and 30% private transport for 2010*

-
- *A new innovative model is being pursued for upgrading the metered taxi fleet*
 - *Accreditation of an “incubator” group of metered operators via*
 - *Vehicle upgrading wrt meters, radios, roof signs etc*
 - *Topographical and customer service training for drivers*