

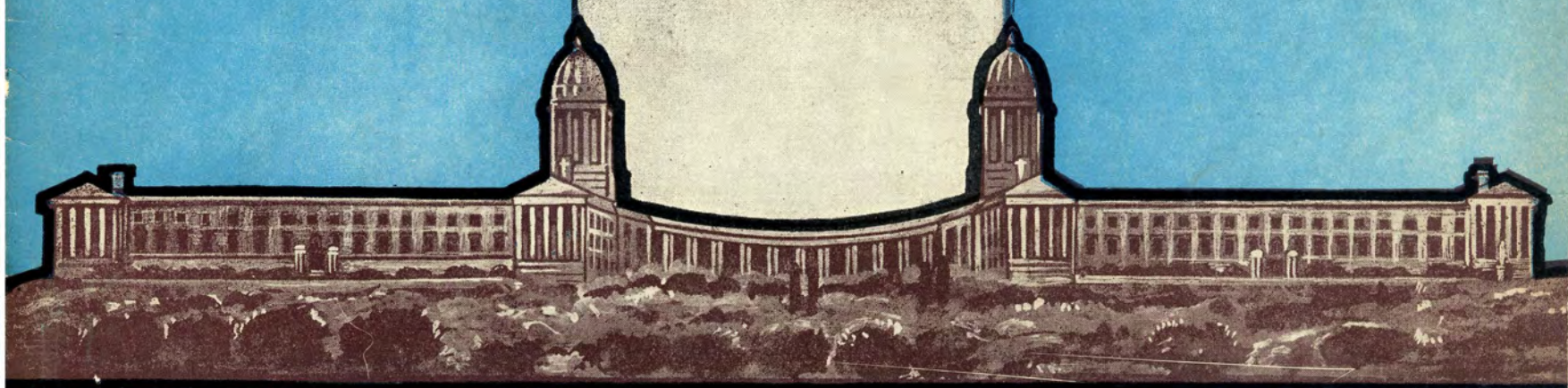
Vol. IV.

No. 19.

MAY : : 1940.

69(68)  
PWS.4/19

# PUBLIC WORKS OF SOUTH AFRICA



*Registered at the General Post Office as  
a Newspaper.*

Price per Copy : 2/-

Subscription : £1 1/- per annum.

**PARTHENON PRODUCTS  
 SELECTED FOR  
 KRUGERSDORP'S NEW POST OFFICE**



*This beautiful building exemplifies the modern note in the Architecture of Public Buildings.*

*The painting and glazing of this beautiful building was carried out by Herbert Evans & Co., using:—*



**BRITISH GLASS; STOPSTARA  
 GLAZING COMPOUND**

and the following Parthenon Products:—

- MELOGLAZE** — Velvet finish Paint;
- GNUDEK** — Durable Gloss Paint;
- PARTHENON XX QUALITY NAVY PAINT.**
- ANTI-SULPHURIC ENAMEL** and
- CALCITE** — Hygienic Distemper.

★ Colour Cards and the fullest information regarding these and any other Painting requisites will be gladly supplied upon request to:—



263, PRETORIUS STREET, PRETORIA.

**"THE PAINT HOUSE" :::: ESTABLISHED FOR OVER 50 YEARS**



## 20th CENTURY CINEMA

●  
JOHANNESBURG

The whole of the Shopfront work in Bronze, Glass Bricks, Marble, Glass and Mosaic, of which the "Armourplate" Glass Doors form a part, is the work of the Johannesburg organisation of **SAGE**.

- Numerous important contracts for Shopfronts, Entrance Doors, Lift Surrounds, Grilles, Ornamental Bronze Work, etc., have been entrusted to us by well-known Architects, Builders, Financial Houses and Government and Civic Bodies.
- Our qualified staff is at your service for consultation, estimating, preparation of details and the execution of all classes of work required for the largest or smallest contracts.

# SAGE

**CRAFTSMEN  
SHOPFITTERS  
ARCHITECTURAL  
METALWORKERS**

**FREDK. SAGE & CO. (S.A.), LTD. (REGISTERED IN ENGLAND.) 10 HEIDELBERG ROAD  
P.O. Box 777. Tel.: 22-7555. JOHANNESBURG.**

# HUNT LEUCHARS & HEPBURN LIMITED

**DURBAN** • **JOHANNESBURG**  
P.O. Box **943** P.O. Box **47**

**TIMBER and BUILDERS'  
MERCHANTS**

Branches at:

LOURENCO MARQUES,  
PRETORIA, GERMISTON,  
BRAKPAN & KLERKSDORP.

SPECIAL LINES:

"UNIVERSAL" MULTI-UNIT TEAK  
WINDOWS.

"UNITEX" INSULATING & BUILD-  
ING BOARD.

"UNITEX" HARDBOARD.

"FERRODOR" ELASTIC PAINT.

"MALTHOID" ROOFING FELT

and

"MASTIPAVE" FLOORING COVER-  
ING.

"FIBRECRAFT" WALLBOARD.

"COLORCRETE" and "CULLAMIX"  
(Coloured Cements).

# WOLMAN SALTS



Clean — Paintable  
Odourless — Fire Resistant  
For Protection against

## World-Famous Wood Preservatives

### WHITE ANTS, INSECTS and DECAY.

- Tested and approved by Government Institutes and extensively used in housing schemes, railways, municipal undertakings, etc., all over the world.
- Over 30 years practical use in all climates and conditions.
- Used for the preservation of Mining Timbers in Gold Mines of the Rand and other parts of Africa.

#### TANALITH

For large-scale treatment of Building and Fencing Timbers by Open Tank Immersion.



#### TANALITH SPECIAL

For Brush and Spray application on new or existing Timbers in Houses, Farms, etc. Only one coat necessary.

Write for Free Expert Advice to **B. SAPHRA.**  
P.O. Box 192. Fourth Floor, Toronto House, 110, President Street, Johannesburg.  
S.A. Representatives of Manufacturers, Hickson & Welch, Ltd., Castleford, England.

Laminated Lavatory Seats.  
Bathroom Cabinets.  
Teak Windows.  
Teak Gates.

Flush, Laminated and Stock Doors.  
All Classes of Joinery, Mouldings, etc.,  
out of  
Teak, Clear Oregon, Deal and  
South African Timber.

# BROUDO'S SAW MILLS

(PTY.) LIMITED

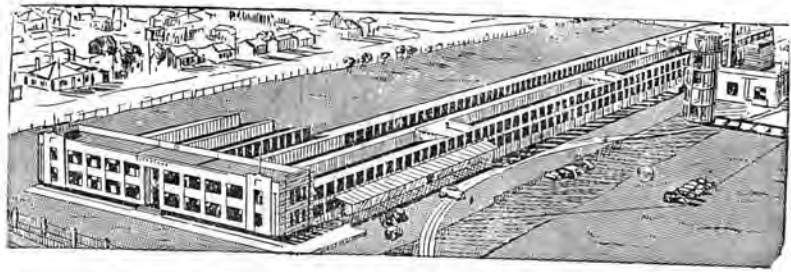
CORNER WATT STREET, MARAISBURG ROAD, INDUSTRIA

JOHANNESBURG

Phone 35-1194-5

P.O. Box 6048

*Firestone cordially invites you on your next business or holiday visit to Port Elizabeth to see for yourself the South African Tyre in the making.*



**FOR  
CARS**

**THE FIRESTONE CHAMPION**

The ONLY Tyre Built with the GUM-DIPPED SAFETY-LOCK CORD BODY and GEAR-GRIP TREAD.

**I**N Firestone's modern plant at Port Elizabeth hundreds of South Africans are producing Firestone Tyres which are giving better performance, service and safety than any imported tyre.

South African motorists — from the ordinary layman to travellers and contractors regularly doing thousands of miles have voluntarily united in testifying to the superiority of the South African Firestone.

**R**EMEMBER — Firestone is the ONLY Tyre with the New GUM-DIPPED SAFETY-LOCK CORD BODY — the Safety Sensation of the Year!



**FOR CARS, TRUCKS, BUSES  
and ROAD MACHINERY** operating on unimproved roads . . . . .  
The **FIRESTONE  
GROUND GRIP TYRE.**

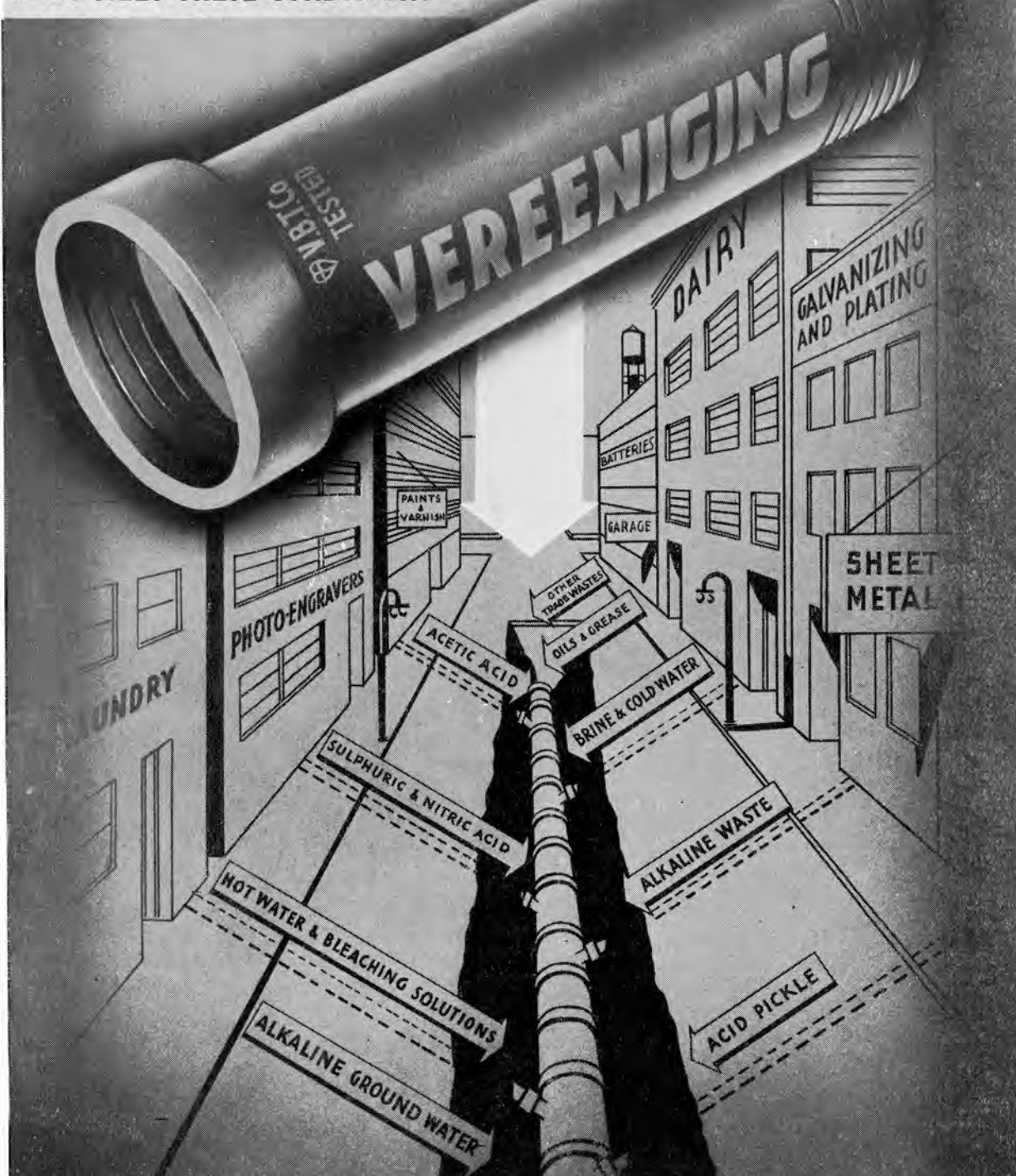


**FOR TRUCKS**  
**FIRESTONE High-Speed  
Heavy Duty Truck-Bus Tyre.**

# Firestone

**THE SOUTH AFRICAN TYRE**

ARE YOU BUILDING SEWERS THAT  
WILL MEET THESE CONDITIONS ?

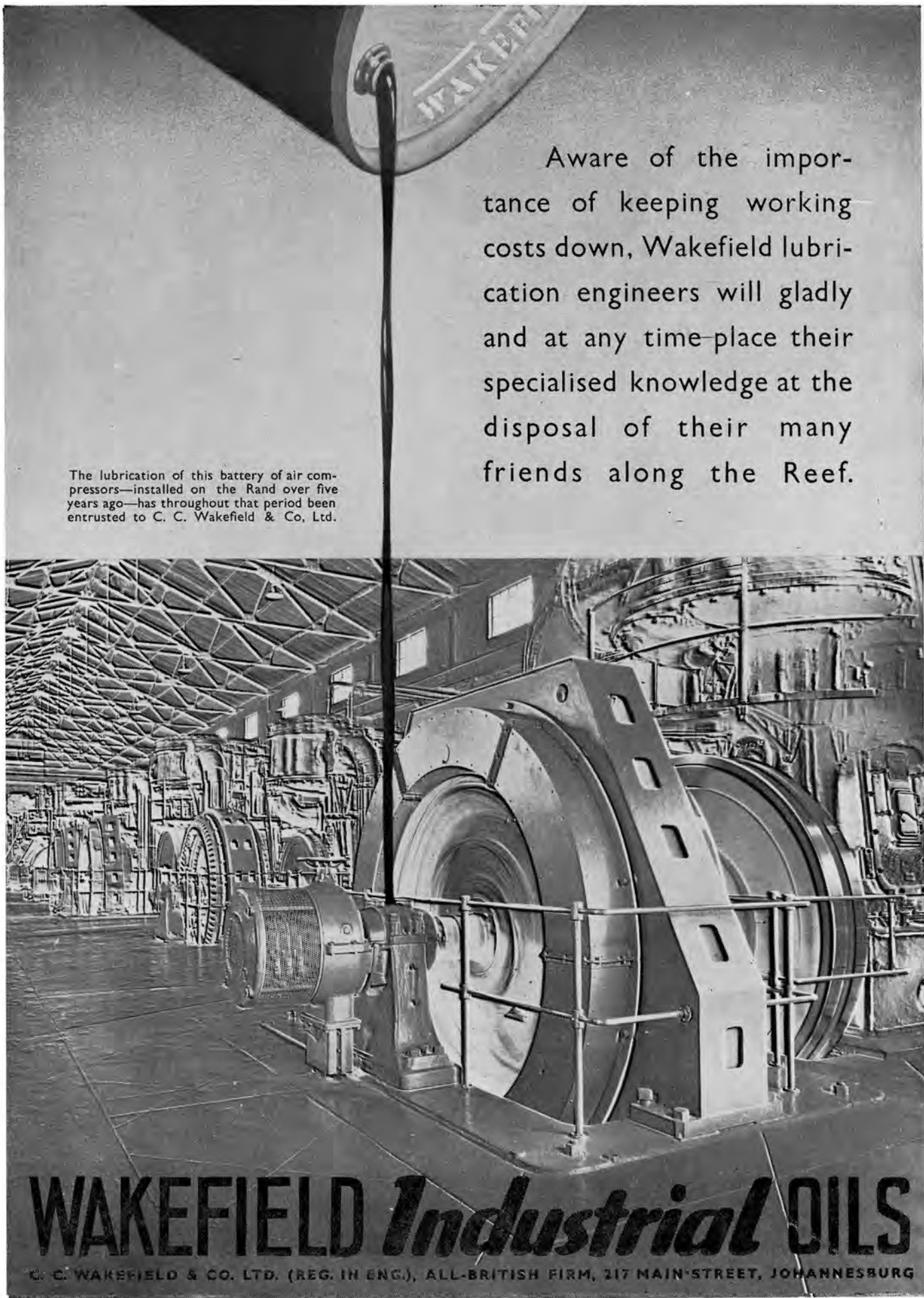


VEREENIGING SALT GLAZED SEWER PIPES  
MEET THESE AND ALL OTHER REQUIREMENTS

*The* **VEREENIGING BRICK & TILE CO.**

HEAD OFFICE AND WORKS: VEREENIGING

SALES DEPT: No. 503 LEWIS & MARKS BLDG. 65 PRESIDENT ST. JOHANNESBURG · PHONE 33-7611 · BOX 7597



Aware of the importance of keeping working costs down, Wakefield lubrication engineers will gladly and at any time place their specialised knowledge at the disposal of their many friends along the Reef.

The lubrication of this battery of air compressors—installed on the Rand over five years ago—has throughout that period been entrusted to C. C. Wakefield & Co, Ltd.

# WAKEFIELD *Industrial* OILS

C. C. WAKEFIELD & CO. LTD. (REG. IN ENG.), ALL-BRITISH FIRM, 217 MAIN STREET, JOHANNESBURG



# Public Works of South Africa

PROPRIETORS:  
PUBLIC SERVICES PUBLICITY (PTY.), LTD.

EDITOR : ERIK TODD.

EDITORIAL OFFICES :  
P.O. Box 1113,  
PRETORIA.

MAY,  
1940.

PUBLICITY DEPARTMENT :  
FIRST FLOOR,  
92 MAIN ST., JOHANNESBURG.

*“PUBLIC WORKS OF SOUTH AFRICA,” which is published monthly, is intended to keep the public up-to-date in regard to projects of the Public Works Departments of South Africa, Union, Provincial and Local Government, giving expression to the activities of each of these departments of service.*

## ★ CONTENTS ★

	<i>Page.</i>
TWO NEW HIGH SCHOOLS FOR SPRINGS .....	8
NEW TYPE OF LECTURE THEATRE CHAIR .....	12
EIGHT-STOREY OFFICE BLOCK FOR S.A.R. STORES DEPARTMENT .....	14
TENDERS INVITED .....	17
TENDERS ACCEPTED .....	18
NOTES ON LOCAL MANUFACTURES FOR THE BUILDING INDUSTRY .....	21
BUYERS' GUIDE .....	22





ENGLISH MEDIUM HIGH SCHOOL, SPRINGS.

Alan Yates.



Alan Yates.

ASSEMBLY HALL.

# TWO NEW HIGH SCHOOLS COMPLETED AT SPRINGS

TECHNICAL DEPARTMENT  
EQUIPMENT MOST  
MODERN IN TRANSVAAL



DOMESTIC SCIENCE CENTRE.

Alan Yates.

**S**PRINGS, one of the most progressive towns on the East Rand, has recently expanded its educational facilities by the acquisition of two fine new high schools. These are the Afrikaans medium high school at Geduld and the English medium high school at Selcourt. Both schools are of interest, and incorporate several specialised features in the way of modern equipment, notably in the Domestic Science centres. They were designed by Mr. Horace Fyvie to the requirements of the Provincial authorities, and erected at a cost of £25,000 each. Opening ceremonies were performed on April 10th last by His Honour, the Administrator of the Transvaal, General J. J. Pienaar. The general contractors were Messrs. P. Leemhuis & Sons, Pretoria.

Both schools follow the same plan with similar elevations. Description, therefore, will be confined to one school, it being necessary to mention only one or two superficial differences. These are confined to treatment, which in the English medium school at Selcourt comprises façades of various coloured face-bricks with a Marseilles tile roof. A different type of face-brick has been used for the Afrikaans school, the roof of which has been carried out in slate. Interior treatment is substantially the same, the only difference being that the assembly hall in the English medium school has been panelled in Oregon up to door height, whereas the hall in the Afrikaans medium school has a face-brick dado.

\* \* \*

**The Plan :** THE schools are laid out on a plan the shape of which will finally form a complete H. Administrative and technical departments

are confined as a single storey to the sides of the H, the bar of which is formed by a double-storey classroom block. The semi-quadrangle resulting from the plan form a forecourt overlooking the sports field on the south. The forecourt is now being laid out as a garden terrace, 152 feet long by 55 feet deep. The rear court will also be laid out as a garden, to be used, it is understood, in conjunction with the study of botany.

On both floors access to the class-rooms is from an open corridor on the north of the block. The main lighting of the whole school is from the south, the outlook being over the sports grounds on the north. This orientation is reflected in the design of the assembly hall, which has its entrances mainly on the north from an open terrace which, incidentally, gives architectural finish to the conception and serves a practical purpose by protecting the hall from the ingress of dirt.

An additional feature of interest will be noted in the siting of the domestic science and manual training centres on the south extremities of the east and west wings to permit the inclusion in the plan of covered shelters, 27 ft. 7 ins. by 32 ft. These shelters have been found particularly useful at the English medium school, where they are used to serve the pupils with luncheons prepared in the Domestic Science Centre. This school is situated about three and a half miles from Springs, and, although only single sessions are held, the practice of keeping the pupils in for preparation studies makes this facility necessary. The luncheons are available at a nominal charge.

\* \* \*

**DETAIL FEATURES.**

**Assembly Hall:** **I**N both schools the assembly hall is 68 ft. by 40 ft., and includes a recessed stage flanked on both sides by dressing-rooms, which are 14 ft. 7 ins. by 10 ft. 4 ins. The stage is equipped with footlights and upper lighting fixtures. A store-room has been provided underneath the stage for chairs and sporting equipment. Fittings include specially made blinds for the windows for use when cinematographic lectures are given. Both halls have kejaat flooring. In the English medium school the walls are panelled in Oregon up to door height. The wall finish in the Afrikaans medium school is face-brick.

**Domestic Science Centre:** **A** SPECIAL feature has been made in both schools of the Domestic Science Centre, which, it is considered, contains the most up-to-date equipment of any school in the Province. So far as the plan is concerned, it will be noticed that two alcoves have been provided. These usefully extend the facilities of the Centre, one being used to accommodate the needlework and millinery classes which do not require much space. In addition, the Centre has its own refuse removal and wood storage facilities.

The Centre is 50 ft. by 32 ft., fitted with two electric stoves, one coal stove and a frididaire. The power for the electric installation is controlled from the adjoining office. Additional fittings include ironing-boards, a fixed writing-board and three movable writing-boards. A hot water installation is connected to the coal stove.

Light green painted dadoes with cream above comprise the colour scheme. The alcoves measure 16 ft. by 9 ft. 4 ins. and 11 ft. by 21 ft. 3 ins. respectively, and one may be screened off from the main room by curtains when in use. Accommodation in the Domestic Science Centre is for 30 pupils at a time.

**Manual Training and Laboratory:** **T**HE Manual Training Centre is also 50 ft. by 32 ft. It includes, in the form of alcoves, a timber store, 11 ft. by 18 ft. 3 ins., and a smithy's shop, 13 ft. by 11 ft. The laboratory is 30 ft. by 36 ft., and is fitted out with the latest equipment, including students' benches of a design different from that usually adopted.

**Class-Rooms:** **A**S stated before, the class-rooms are confined to the double-storey block forming the bar of the H-shaped plan. They are 10 in number, to accommodate an average of 30 pupils each, six rooms being 24 ft. by 22 ft. 6 ins., and four, 27 ft. by 22 ft. 6 ins. Blackboards are on the west side of the class-rooms, and are equipped with overhead lighting fixtures for use during dull days or to overcome the effects of sheen when necessary. There is adequate cross-lighting and ventilation. Available wall space is used for pinning-boards. The walls have face-brick dadoes up to window-sill height.

All class-rooms are fitted with loud-speaker plugs connected to a receiving set in the Principal's office. It is hoped that eventually the schools will have the full installation for receiving broadcast programmes specially devised for scholars.

It should be mentioned here also that school periods are announced by means of a bell system consisting of six electric bells placed at different points, and controlled from the Principal's office.

**Cloak-Rooms:** **I**T will be noticed from the plan reproduced here that the cloak-rooms have been kept small, as experience shows that hat and coat pegs are used very little by scholars. This, however, has permitted the provision in the boys' cloak-room of three showers served with hot and cold water. Similar provision has been made in the girls' cloak-room, where there are two showers and two foot-baths. The purpose of these provisions is to allow the pupils engaged in sporting activities to use the cloak-rooms as changing rooms. The sports field is immediately adjacent to the school.

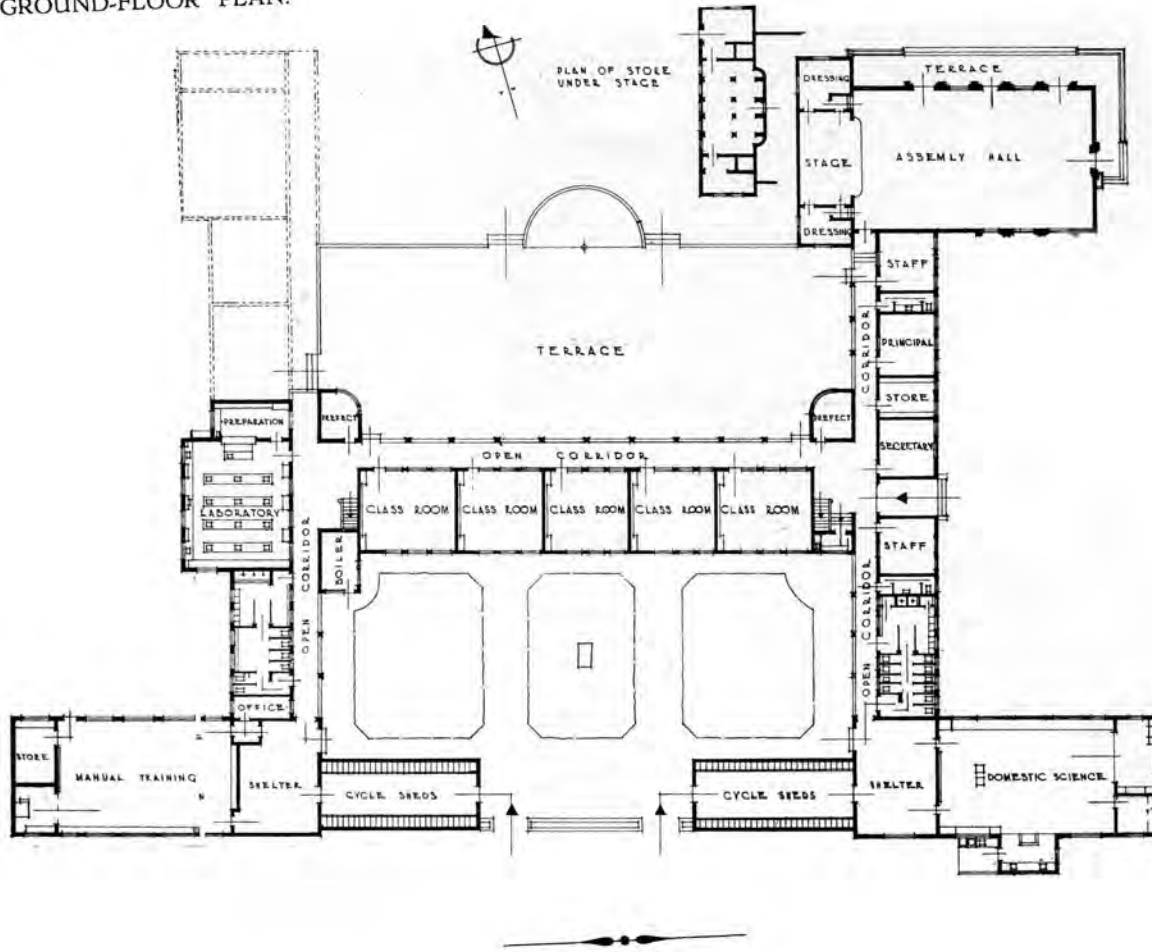
**General:** **T**HE all room and library on the upper floor of the double-storey block have both been fitted out with the latest equipment. The dimensions are 30 ft. by 36 ft., and 30 ft. 8 ins. by 22 ft. 8 ins., respectively. Other accommodation includes two prefects' rooms situated one in each corner of the forecourt and opposite the stairways to the upper floor. A small tea kitchen, 10 ft. 6 ins. by 4 ft., has been provided under the stair on the administrative side. The administrative section includes a principal's and secretary's office, a store-room and two staff rooms.

**Interior Treatment:** **T**HIS in general comprises face-brick dadoes to walls, and Oregon floors.

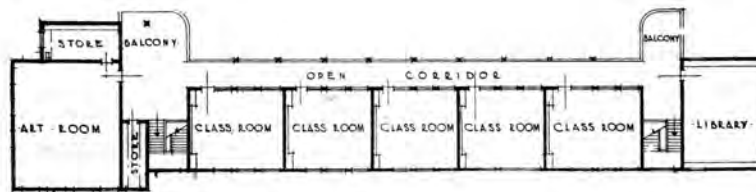
All windows are steel with double pivot-hung sashes, specially chosen for their ease of operation. All granolithic floors are non-slip, and those in the open corridors are finished in asphalt. The school is heated throughout by low-pressure hot-water heaters, and extra ventilation is provided in the assembly hall by means of hopper vents.

**Future Extensions:** **F**UTURE extensions will comprise an addition to the west wing or side of the H, and will contain four class-rooms, an additional laboratory, a prep. room and a geography room. Both schools at present accommodate a little more than 300 pupils; the ultimate accommodation is for 450. Messers. Roos & Roos were the quantity surveyors.

GROUND-FLOOR PLAN.



UPPER-FLOOR PLAN — CLASS-ROOM BLOCK.



Springs High Schools



Alan Yates.

---

THE LECTURE THEATRE IN THE JOHANNESBURG POST OFFICE.— *The front row of chairs have the writing ledges up. Note the desk with raised lectern ready for use.*

---

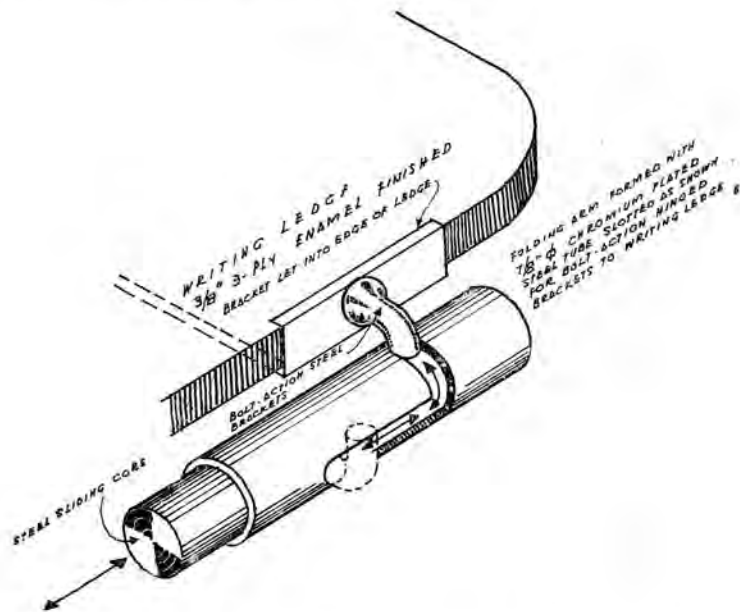
## New Type of Lecture Theatre Chair.

*Interesting Precedent for New Style Furnishings in Lecture Hall of G.P.O., Johannesburg.*

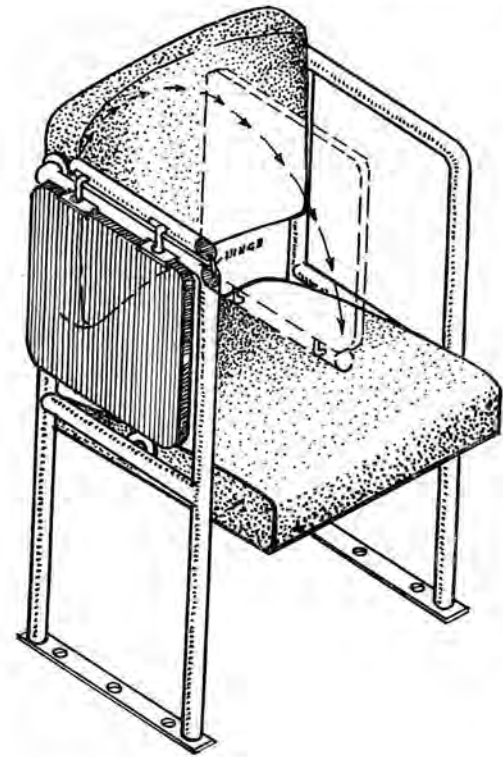
**A**N interesting precedent for a new style in lecture hall furnishings is to be seen in the latest equipment installed in the lecture theatre incorporated in the recently completed east wing extension of the Johannesburg General Post Office. This equipment is of novel design, carried out in chromium-plated tubular steel. It comprises 60 chairs, each of which is instantly convertible from the theatre type to a lecture type with attached writing ledge. There is, in addition, a particularly smart lecturer's desk with collapsible lectern which may be folded up out of sight underneath the desk. The work was carried out locally to the designs of the Public Works Department. Incidentally, the lecture theatre is used by the engineering and technical department of the Post Office for staff instruction.

### *The Problem:*

**T**HE problem required the design of a chair for use in a lecture theatre, the chair to be instantly convertible from theatre type with arm rests to a lecture type with writing ledge. Further, the chair was to be as compact as possible to facilitate access, and was to be designed so that it could be fixed to the floor in tiers.



Isometric sketch showing bolt action hinged brackets to writing desk.



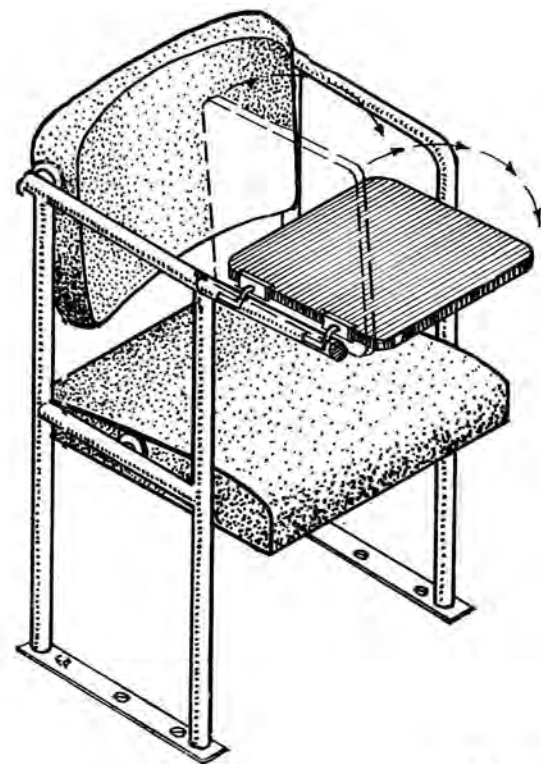
### The Solution:

**F**OR the sake of durability and appearance the chairs were constructed with a 1-inch chromium-plated tubular steel frame, with shaped, upholstered and spring backs and tip-up seats finished with pegamoid.

A 12-inch square writing ledge of enamelled laminated board was provided for each chair. This ledge is fixed to a folding extension arm with two special bolt-action hinged brackets which automatically lock the writing ledge in a vertical or horizontal plane. The extension arm is hinged to fold back on to the arm of the chair, thus allowing the writing ledge when set in a vertical plane to be folded back and down, out of the way when not in use.

Similarly, the lecturer's desk has a frame of chromium-plated tubular steel, the design being essentially modern. The desk top and drawers are kejaat-veneered. The lectern is formed by a tubular steel frame which folds up and slides out of view under the desk top. All locking bolts are invisible.

These two isometric sketches, above and below, illustrate the action of the hinged writing ledge, and its respective position when out of use and in use.



## New S.A.R. Stores Dept.



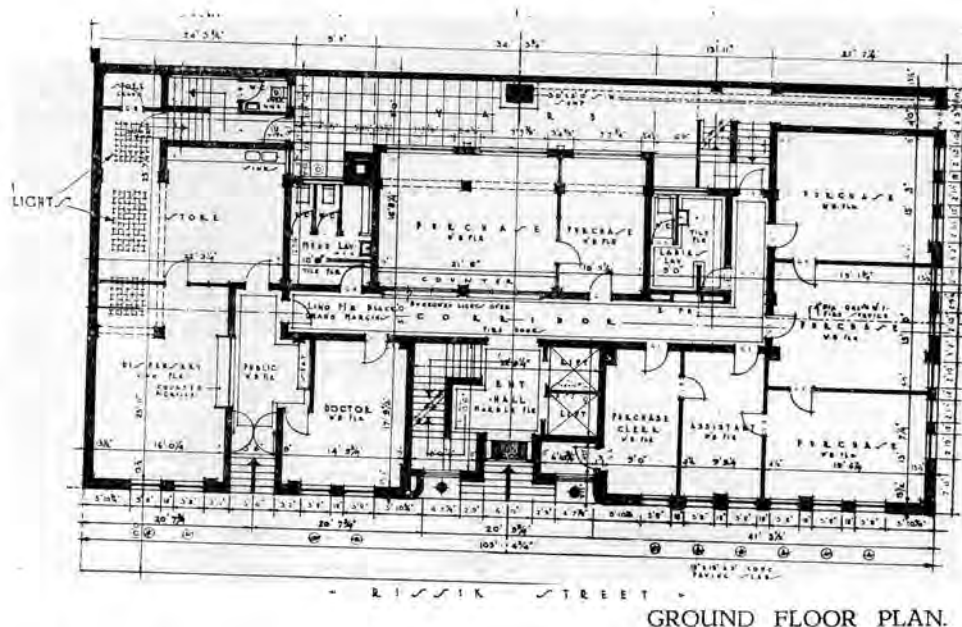
S.A.R. Photo.

*Golden Brown Face-Brick Façades  
with Grey Brizolit Dressings*



# EIGHT-STOREY OFFICE BLOCK for S.A.R. STORES DEPARTMENT

New £44,000  
Building  
In Rissik Street,  
Johannesburg



GROUND FLOOR PLAN.

ONE of the striking facts about modern South Africa is the rapid growth of facilities in all spheres administering to the public service. To this the South African Railways and Harbours is no exception for, today, another large building has been completed in Johannesburg to provide for the Administration's increasing demand for accommodation.

The new building is a handsomely conceived structure eight storeys high, and has been erected on a site on the corner of Rissik and Noord Streets, immediately opposite the present S.A.R. Headquarters. The building faces east, and the windows on the north elevation overlook the Railway platforms. It provides office accommodation for the Railway Stores Department, and includes, on the ground floor, a section for the S.A.R. Sick Fund dispensary and doctor's consulting room. The seventh floor has been reserved for medical and health officials connected with Railway administration.

**Brick and Brizolit** REFLECTING to some extent the treatment carried out in the new Johannesburg Railway Station and the present Headquarters, the new offices are of reinforced concrete-frame construction, brick-filled. Both east and north façades—the other two are hidden—are faced with a golden-brown facing brick from the top of the windows on the first floor to the parapet, which has a light brizolit coping. The narrow piers between the windows have been picked out by the use of dark brindle. Further relief,

as well as a horizontal emphasis, has been obtained by the provision of continuous brizolit sills and lintels coupling the six windows in each of the wings flanking a slightly recessed central portion. On both façades a granite brizolit facing has been carried out from the pavement to the top of the first-floor windows. On the first floor the piers between the windows are triangular in shape, and penetrate slightly the light brizolit moulding which on this floor takes the place of the sills and lintels to the windows. A concrete slab canopy runs round both façades over the ground floor, merging into a small balcony fitted with a wrought-iron railing over the entrance doors in Rissik Street.

On the slightly recessed central portion a brizolit facing has been carried up from the steps to the top of the second floor, and is continued in two narrow "pylons" rising to the top of the façade to carry the flag masts. Between these pylons and the central windows on each floor there is a precast decorative panel worked in brizolit of a light grey colour.

The kejaat entrance doors, flanked by sidelights with projecting glazing bars, are glass-panelled, and are set in a raised, fluted frame which is carried to the top of the second floor. On the first floor, within this frame, a glass-panelled door opens out on to the balcony over the entrance way. The entrance doors are approached up a short flight of steps, faced with brizolit also.

On the south end of the Rissik-Street front there is

an additional entrance comprising the same type of doors set in a small recessed porch. This is the entrance to the Sick Fund Department. All the bulk-head lights for the basement have been fitted with decorative wrought-iron grilles.

\*            \*            \*

**Plan and Interior Treatment** A SIMPLE plan has been carried out on a site which, on the Rissik-Street front, is 100 feet long and 50 feet deep.

The entrance doors lead into a small entrance hall with wall finishings in light tambootie marble up to a height of 9 feet, with a light capping and plaster above. The flooring is of grey marble slabs with a black marble border. On the right-hand side of the hall are two passenger lifts, and on the left the main stairway, also carried out in marble. The marble finishing is repeated in the lift hall on the first floor, and is carried up the stairway to the intermediate landing between the first and second floors.

As will be seen in the reproduced plan, the entrance hall leads into a corridor running north-south. At the north end this links up with a smaller corridor running at right angles to connect with the fire escape situated at the back of the building. This arrangement is repeated on all floors, the only variation being in the size and number of offices.

The largest office on the ground floor is that accommodating the Purchase Section. Situated on the west side of the corridor, this has a wide counter opening facing the entrance hall, the counter being fitted with a decorative aluminium alloy grille. With the exception of the Sick Fund apartments, all the offices on this floor are ancillary to the main purchase office.

In addition to office accommodation, each floor has its own conveniences, a double set being provided on the ground, third and seventh floors. The flooring in the offices is mainly linoleum. Cork tiles have been used in the corridors.

The main stairway terminates on the seventh floor, so that access to the roof is up the last flight of the fire-escape stair at the back of the building, this being the only approach to the lift motor-rooms on the roof. On the south-west corner of the roof two double rooms, a shower room and lavatory have been added to accommodate the Native maintenance staff.

\*            \*            \*

**Special Features and a Variation** **T**HOUGH it has been stated that the same lay-out applied in general to all floors, a slight but interesting variation occurs between the ground-floor plan and that of the upper floors.

It will be noticed from the reproduced plan of the ground floor that the south-west corner is occupied by a large store room behind the Sick Fund dispensary. By reason of the nature of the plan, the sole source of natural illumination would have been a window in the north wall overlooking the small yard. The south elevation has therefore been recessed a distance of eight feet from the first floor, starting from a point about midway back from the Rissik-Street front. This arrangement has enabled glass-crete roof lights to be built into the small flat roof left exposed over the store room and partly over the dispensary.

A practically similar arrangement is to be found at the rear of the building, only in this instance there is no recessing of the elevation. On the ground floor the main office of the Purchase Section projects out from the rear elevation, so that the weight of the elevation above has had to be carried on square-section columns in the office concerned.

Another interesting feature incorporated in the design of the building is the provision of cable ducts by building double floors to all the corridors. A space of 2 feet 9 inches has been left between the concrete slabs forming the floor of each corridor and the ceiling of that below. Throughout the building, telephone cables are hidden behind built-up skirtings. The joinery throughout is in kejaat. Another point about the corridors is that they are illuminated by means of "borrowed" lights.

In addition to the usual fire-protection appliances, hydrants being provided on each floor, the landing halls may be cut off from the rest of the building by means of automatically-operated fire doors.

In the building there is a large basement, the plan of which is roughly a repetition of the upper floors. It is gained by the main stairway or the lifts, and contains a large store room, the boiler room, a large laboratory and a few small accessory rooms. It should be added that central heating is provided by means of radiators throughout.

This new building was designed departmentally, the total cost being about £44,000.



# Tenders Invited

**T**HE following are particulars of the more important tenders which have been invited, up to the time of going to press, by Government departments and Provincial Administrations. In each case the date by which tenders must be submitted, and the office to which application should be made, are given.

## BUILDINGS AND ALTERATIONS, ETC.

**Aeradio Station** at Slangkop, C.P. (P.W.D. tender 639): P.W.D., Pretoria (Room 531, 'phone 5477), and District Representative, P.W.D., Cape Town. **6th June.**

## CENTRAL HEATING, ETC.

**Vertical steam boilers, automatic stokers, central heating and hot water installation, etc.,** at Ladysmith Hospital: P.W.D., Pretoria. **5th June.**

## CHEMICALS, LABORATORY EQUIPMENT, ETC.

**Apparatus and chemicals** for the Division of Chemical Services of the Department of Agriculture and Forestry, Johannesburg (tender S.O. 860): Union Tender and Supplies Board, 271 Visagie Street (P.O. Box 371, 'phone 3121), Pretoria. **13th June.**

**Cotton wool**, supply of, to Onderstepoort Laboratory (tender S.O. 864): Particulars as above. **20th June.**

**Glass slides**, supply of, to Onderstepoort Laboratory (tender S.O. 874): Particulars as above. **20th June.**

**Chemicals and apparatus**, supply of, to Division of Horticulture, Department of Agriculture and Forestry (tender S.O. 876): Particulars as above. **20th June.**

**Hypodermic syringes**, supply of, to Onderstepoort Laboratory (tender S.O. 892): Particulars as above. **27th June.**

**Carboys**, supply of, to Onderstepoort Laboratory (tender S.O. 894): Particulars as above. **27th June.**

**Dip testers**, supply of, to Onderstepoort Laboratory (tender S.O. 879): Particulars as above. **27th June.**

**Chemicals and apparatus**, supply of, to Division of Botany and Plant Pathology, Department of Agriculture and Forestry (tender S.O. 900): Particulars as above. **4th July.**

## COOKING EQUIPMENT.

**Steam cooking apparatus**, supply and delivery of, at Ladysmith Hospital: P.W.D., Pretoria. **5th June.**

## DRAINAGE AND SANITATION.

**Main drainage** and water supply at Military Camp, Oudtshoorn (contract No. 4) (P.W.D. tender 640): P.W.D., Pretoria (Room 531, 'phone 5477), and District Representative, P.W.D., Port Elizabeth. **6th June.**

## ELECTRICAL EQUIPMENT.

**V.I.R. Cables, lead-covered, and armoured cables and electrolier wire:** supply and delivery to P.W.D. Stores (P.W.D. tender S. 20): P.W.D., Pretoria (Room 513, 'phone 3457). **6th June.**

**Low-tension cable** for Magistrate's Courts, Johannesburg: supply and delivery (P.W.D. tender 634): P.W.D., Pretoria (Room 531, 'phone 5477). **27th June.**

**Superheater elements** for S.A.R. & H. Administration (tender 2685): Railway Stores at Salt River, Uitenhage, East London, Durban, Bloemfontein, Pretoria; and Chief Stores Superintendent, Park Chambers, Johannesburg. **22nd July.**

## FURNITURE, FITTINGS, ETC.

**Iron instrument tables** with wooden tops and cast-iron supports, supply of, for Cape Town Post Office (P.O. tender 866): District Stores Superintendents, Cape Town, Durban, Johannesburg, Bloemfontein, Port Elizabeth, East London; Controller of P.O. Stores, Room 83, G.P.O. Annexe, Pretoria; Divisional Controller, Pietermaritzburg. **6th June.**

## ROADS AND ROAD-MAKING EQUIPMENT.

**Mechanical shovels** for Transvaal Provincial Administration (tender 50/1940): Controller of Stores, P.O. Box 857, Pretoria. **12th June.**

**Tractors (wheel type)** for Tvl. Prov. Adm. (tender 51/1940): Particulars as above. **12th June.**

**Air-compressors (portable)** for Tvl. Prov. Adm. (tender 52/1940): Particulars as above. **12th June.**

**Truck chassis** for Tvl. Prov. Adm. (tender 53/1940): Particulars as above. **12 June.**

**Tractor angle-dozers** for Tvl. Prov. Adm. (tender 41/1940): Particulars as above. **26th June.**

**Crawler tractors** for Tvl. Prov. Adm. (tender 62/1940): Particulars as above. **26th June.**

**Approx. 1,635,500 gallons bituminous road-binder** for Tvl. Prov. Adm. (tender 67/1940): Particulars as above. **5th June.**

**Approx. 96,000 cu. yds. crushed stone** for Tvl. Prov. Adm. (tender 70/1940): Particulars as above. **5th June.**

**Motor graders (heavy)** for Tvl. Prov. Adm. (tender 65/1940): Particulars as above. **3rd July.**

**Motor graders (medium)** for Tvl. Prov. Adm. (tender 66/1940): Particulars as above. **3rd July.**

## WATER SUPPLY AND IRRIGATION EQUIPMENT.

**Water supply** and main drainage at Military Camp, Oudtshoorn (contract No. 4) (P.W.D. tender 640): P.W.D., Pretoria (Room 531, 'phone 5477), and District Representative, P.W.D., Port Elizabeth. **6th June.**

## MISCELLANEOUS.

**Ladders, extension, tubular steel** (P.O. tender 860): District Stores Superintendents, Johannesburg, Cape Town, Port Elizabeth, East London, Durban, Bloemfontein; Divisional Controller, P.O. Pietermaritzburg; Controller of P.O. Stores, Room 77, G.P.O. Annexe, Pretoria. **6th June.**

**Tractor** for Vaal-Hartz Settlement, supply of (tender S.O. 865): Union Tender and Supplies Board, 271, Visagie Street (P.O. Box 371, 'phone 3121), Pretoria. **20th June.**

**Levelling instruments**, supply of, to Department of Native Affairs (tender S.O. 863): Particulars as above. **20th June.**

**Tractor**, supply of, for Loskop Settlement, Middelburg (Tvl.) District (tender S.O. 895): Particulars as above. **27th June.**

**Electric body lift** for New Police Mortuary, Johannesburg: supply, delivery and erection (P.W.D. tender 633): P.W.D., Pretoria (Room 531, 'phone 5477). **11th July.**

**Motor chassis** for S.A.R. & H. Administration (tender 2699): Railway Stores at Salt River, Uitenhage, East London, Durban, Bloemfontein, Pretoria; and Chief Stores Superintendent, Park Chambers, Johannesburg. **22nd July.**

**Fire-fighting equipment**, supply of, for various Defence Department Depôts (P.W.D. tender S. 21): P.W.D., Pretoria (Room 513, 'phones 3547 and 3504). **20th June.**

**Steam sterilisers** for Ladysmith Hospital: supply and delivery: P.W.D., Pretoria. **5th June.**

## Tenders Accepted

**T**HE following are particulars of some of the contracts which have been awarded by Government institutions and Provincial Administrations. The name of the successful tenderer is given in each case, and, wherever practicable, the contract price.

### AGRICULTURAL IMPLEMENTS AND MACHINERY, ETC.

**Mower** for Air Station, Bloemfontein (Part of tender S.O. 648): Mangold Bros., Ltd., Johannesburg. £391 10s., f.o.b. Southampton.

### AIR-CONDITIONING AND CENTRAL HEATING.

**Ventilating plant** for Police Mortuary, Johannesburg (P.W.D. tender 484): A. E. Barker, Johannesburg. £1,049, delivered and erected.

**Central heating installation** for Police Barracks, Springs (P.W.D. tender 520): F. A. Sharman (Pty.), Ltd., Johannesburg. £1,175.

**Central heating installation** for Z.A.S.M. House, Pretoria (P.W.D. tender 519): J. Chisholm (Pty.), Ltd., Pretoria. £317 4s 4d.

**Central heating plant** for Post Office, Ladysmith (P.W.D. tender 493): A. E. Barker, Johannesburg. £478.

**Central heating plant** for Police Mortuary, Johannesburg (P.W.D. tender 504): A. E. Barker, Johannesburg. £497.

### BRIDGES AND MATERIALS.

**Bridge material** for Transvaal Provincial Administration (tender 32/1940): A. Woolf (Pty.), Ltd.

### BUILDINGS AND ALTERATIONS, ETC.

**Married quarters** for officers at Tempe (P.W.D. tender 445): L. Lange, Bloemfontein. £11,047.

**Married quarters** for officers, Wynberg (P.W.D. tender 446): Reid & Knuckey, Cape Town. £14,850.

**Fruit Research Station**, Stellenbosch University (P.W.D. tender 541): Miller Bros. Builders (Pty.), Ltd., Cape Town. £23,215.

**Additions to Public Offices**, Sprinkbok (P.W.D. tender 558): C. J. van Heerden, Upington. £1,549.

**Additions to Trades School** at Jacobsdal (P.W.D. tender 557): L. Fokkens, Krugersdorp. £3,287.

**Storage Block**, National Museum, Cape Town (P.W.D. tender 556): Buckland & Eaton, Cape Town. £2,240.

**Residence and clerk's quarters**, Assistant Native Commissioner, Duivelskloof (P.W.D. tender 549): A. Watson, Pietersburg. £4,158.

**Alterations and additions** to Government Garages, Pretoria (P.W.D. tender 566): D. M. Dey, Pretoria. £4,965.

**Additions to Umhlali Government School**: F. H. Radford (Pty.), Ltd. £2,247.

**Additions to Fynlands Government School**, Durban: T. Maddox. £1,760.

**150,000 gall. water tower, etc.** at Grey's Hospital, Pietermaritzburg: F. Brierley. £5,591 14s.

**Additions to Mangate Government Coloured School, Natal**: T. S. Bishop. £1,299 10s.

### CHEMICALS, LABORATORY EQUIPMENT, ETC.

**Power remedy containers** (315,000) for Onderstepoort Laboratory (tender S.O. 768): Maythams, Ltd., Fordsburg. £1,763 13s. 6d. delivered.

**Apparatus and Chemicals** for Stellenbosch-Elsenburg College of Agriculture (tender S.O. 521): (1) Macdonald, Adams & Co., Ltd., Johannesburg; (2) Taeuber & Corssen (Pty.), Ltd., Johannesburg; (3) B. Owen Jones, Ltd., Johannesburg; (4) Patlansky Bros. & Schauder, Port Elizabeth.

**Apparatus and Chemicals**, supply of, to Biological Control Laboratory, Cape Town (tender S.O. 632): (1) Taeuber & Corssen (Pty.), Ltd., Johannesburg; (2) Connell Instrument Co. (Pty.), Ltd., Johannesburg; (3) B. Owen Jones, Ltd., Johannesburg; (4) Surgical Instrument Co., Johannesburg; (5) Silverton Co., Johannesburg; (6) Macdonald, Adams & Co., Johannesburg; (7) Chas. F. Thackray, Ltd., Leeds.

## COOKING EQUIPMENT, ETC.

**Steaming ovens** (2) for Mental Hospital, Fort Beaufort (P.W.D. tender 483): Angus McLeod & Co. (Pty.), Ltd., Johannesburg. £326 3s., f.o.b. Glasgow.

## ELECTRICAL EQUIPMENT.

**Electric motor** (Part of P.W.D. tender 561): D.A.W.E.S. Ltd., Johannesburg. £155 12s.

**Wireless apparatus**, supply of, to S.A. Police (Police Indent 237): (1) H. Polliack & Co., Ltd., Johannesburg; (2) Marwin Radio Electric & Utility Co., Ltd., Johannesburg; (3) Bartle & Co., Johannesburg; (4) Ford Motor Co. of S.A. Ltd., Port Elizabeth; (5) L. Lloyd, Johannesburg; (6) Chenik & Barnett (Wireless) Ltd., Johannesburg.

**Cable**, supply of, to Department of Posts & Telegraphs (tender A.L. 243): (1) Reunert & Lenz, Ltd., Johannesburg; (2) Standard Telephones & Cables, Ltd., Pretoria; (3) Siemens Bros. & Co. (British) Ltd., Johannesburg; (4) Blane & Co., Ltd., Johannesburg; (5) Wilson & Herd, Ltd., Johannesburg; (6) British Insulated Cables, Ltd., Johannesburg.

**Electric conduit fitting**, for Public Works Department, supply and delivery (P.W.D. tender S. 17): (1) Wilson & Herd, Ltd., Johannesburg; (2) C. E. Scott (Pty.), Ltd., Cape Town; (3) Hubert Davies & Co., Ltd., Johannesburg.

**Voltmeters, ammeters, milliameters and current transformer** for Department of Post & Telegraphs (tender P.O. 835): (1) Siemens Bros. & Co. (British) Ltd., Johannesburg; (2) Hubert Davies & Co., Ltd., Johannesburg.

**Cable** for Department of Posts & Telegraphs (tender P.O. 250): (1) British General Electric Co., Ltd., Johannesburg; (2) Siemens Bros. & Co. (British) Ltd., Johannesburg; (3) British Insulated Cables (S.A.) Ltd., Johannesburg; (4) Arthur Trevor Williards (Pty.), Ltd., Johannesburg; (5) Standard Telephone & Cables, Ltd., Pretoria.

(1) **300 Magneto bells**, (2) **300 Magneto switches**, for Department of Posts & Telegraphs (tender P.O. 845): Rogers-Jenkins Co. (Pty.), Ltd., Johannesburg. (1) £156 5s.; (2) £410, both f.o.b. Stockholm.

## FURNITURE, FITTINGS, ETC.

**Furniture** for Langehoven Commercial School, Oudtshoorn (tender S.O. 586): (1) G. P. Milne (Pty.), Ltd., Cape Town; (2) Mansfield & Co. (Cape) (Pty.), Ltd., Port Elizabeth; (3) Strydom & Jordaan, Oudtshoorn.

**Steel drawer cabinets** (13) for Surveyor-General's Office, Bloemfontein (P.W.D. tender 420): S.A. Steel Equipment Co. (Pty.), Ltd., Johannesburg. £487 10s., delivered.

**Double tubular steel bunks** (40) for Cinderella Prison, Boksburg (P.W.D. tender 452): Cyclone Gate & Fence Co. Ltd., Johannesburg. £258, f.o.r. Kazerne.

**Wardrobe lockers** for Department of Posts & Telegraphs (tender P.O. 839): Thos. Barlow & Sons (S.A.) Ltd., Johannesburg.

**School furniture** for Transvaal Provincial Administration (tender 5/1940): (1) R. H. Morris, Ltd., Cape Town; (2) Steel & Barnett, Ltd., Johannesburg; (3) Anglo-Union Furniture Manufacturers, Johannesburg; (4) C. W. Crossling, Johannesburg; (5) Thos. Barlow & Sons, Ltd., Johannesburg; (6) Globe Chair Factory, Umbilo, Durban.

## LAUNDRY EQUIPMENT.

**Hydro-extractor** for Mental Hospital, Queenstown (P.W.D. tender 516): James B. Hackett, Cape Town. £131 5s., f.o.b. Liverpool.

**Washing machine** for Mental Hospital, Queenstown (P.W.D. tender 516): A. E. Barker, Johannesburg. £285, f.o.b. Liverpool.

**Ironing machine** for Mental Hospital Queenstown (P.W.D. tender 516): Tullis Ltd., Johannesburg. £477.

## ROADS AND ROAD-MAKING EQUIPMENT.

(1) **145,000 galls. Iscor tar prime**, (2) **174,000 galls Iscor tar**, for Transvaal Provincial Administration (tender 15/1940) Steel Sales (Pty.), Ltd., Johannesburg.

**258,000 galls. "Shellspra" bitumen** for Transvaal Provincial Administration (tender 15/1940): Shell Co. of S.A. Ltd.

## REFRIGERATING PLANT.

**Refrigerating plant** for Police Mortuary, Johannesburg (P.W.D. tender 517): S.A. General Electric Co., Ltd., Johannesburg. £2,001.

## WATER SUPPLY &amp; IRRIGATION EQUIPMENT.

**Hand pumps** (50) for Department of Native Affairs (tender S.O. 778): Robert Williams & Co., Johannesburg. £797 10s., f.o.r. Kazerne.

**Boring for water** (tender S.O. 754): C. P. van Aswegen, Taungs.

**Windmill** for Police Post, Schildpads (P.W.D. tender 568): Malcomess Ltd., Johannesburg. £159.

**Pump, engine, tanks, and tankstand**, for Government Buildings, Mahlabatini (P.W.D. tender 515): Stewarts & Lloyds of S.A. Ltd., Durban.

## MISCELLANEOUS.

**Fencing material** for Department of Native Affairs (tender S.O. 580): (1) Hunt, Leuchars & Hepburn, Ltd., Pretoria; (2) Clyde Trading Co., Ltd., Johannesburg; (3) William Bain & Co. (S.A.) Ltd., Johannesburg.

**Fencing material** for Department of Native Affairs, Barberton (tender S.O. 565): (1) Patlansky Bros. & Schauder, Port Elizabeth; (2) Otto Landsburg & Co., Ltd., Cape Town; (3) Clyde Trading Co., Ltd., Johannesburg.

**Fencing material** for Karreepoort Settlement (tender S.O. 767): (1) Clyde Trading Co., Ltd., Johannesburg; (2) Premier Gate, Fence & Wire Co., Ltd., Cape Town.

**Fencing standards** for Irrigation Department (Irrigation tender 473): (1) Moshal Gevisser & Co., Ltd., Durban; (2) Hunt, Leuchars & Hepburn, Pretoria; (3) Patlansky Bros. & Schauder, Port Elizabeth; (4) Clyde Trading Co., Ltd., Johannesburg.

**Lathe, motor driven**, for Department of Defence (tender S.O. 513): D. Drury & Co. (1930) (Pty.), Ltd., Johannesburg. £452, f.o.b. London.

**Tractor** for Air Station, Bloemfontein (Part of tender S.O. 648): Mangold Bros., Ltd., Johannesburg. £357 10s., f.o.r. Bloemfontein.

**Fencing material** for Loskop Settlement (tender S.O. 620): (1) Premier Gate, Fence & Wire Co., Ltd., Cape Town; (2) Moshal, Gevisser (Pty.), Ltd., Durban; (3) Clyde Trading Co., Ltd., Johannesburg; (4) Jas. Weir & Co., Ltd., East London; (5) S. Machanick & Co., Cape Town; (6) African Gate and Fence Works (Pty.), Ltd., Johannesburg; (7) Wm. Bain & Co. (S.A.) Ltd., Johannesburg.

**Fencing material** for Vaal-Hartz Settlement (tender S.O. 799): (1) Otto Landsberg & Co., Ltd., Cape Town; (2) Premier Gate, Fence & Wire Co., Ltd., Cape Town.

**Fencing material** for Irrigation Department (Irrigation tender 443): (1) S. Machanick & Co., Cape Town; (2) Otto Landsberg & Co., Ltd., Cape Town; (3) Armico (Pty.), Ltd., Johannesburg; (4) Hunt, Leuchars & Hepburn, Ltd., Pretoria; (5) Patlansky Bros. & Schauder, Port Elizabeth; (6) Moshal Gevisser (Pty.), Ltd., Durban; (7) Clyde Trading Co., Ltd., Johannesburg.

**Fencing material** for Leliefontein Reserve (tender S.O. 756): (1) Patlansky Bros. & Schauder, Port Elizabeth; (2) Clyde Trading Co., Ltd., Johannesburg; (3) A. Mosenthal, Ltd., Port Elizabeth; (4) South African Wire Co., Ltd., Durban; (5) Woolf Engineering Co. (Pty.), Ltd., Bloemfontein; (6) Otto Landsberg & Co., Ltd., Cape Town; (7) Moshal Gevisser (Pty.), Ltd., Durban.

**Fencing material** for Department of Native Affairs (tender S.O. 716): (1) African Gate & Fence Works (Pty.), Ltd., Johannesburg; (2) Wire Industries, Steel Products & Engineering Co., Ltd., Johannesburg; (3) Otto Landsberg, Ltd., Cape

Town; (4) Premier Gate, Fence & Wire Co., Ltd., Cape Town; (5) Hunt, Leuchars & Hepburn, Ltd., Pretoria; (6) Clyde Trading Co., Ltd., Johannesburg; (7) Moshal Gevisser (Pty.), Ltd., Durban; (8) S.A. Wire Co., Ltd., Durban; (9) Cyclone Gate & Fence Co., Ltd., Port Elizabeth.

**Lucerne press** for Olyvenhou:sdriift Settlement (tender S.O. 808): Dunell Ebdon & Co., Ltd., Port Elizabeth. £240 7s., f.o.r. Port Elizabeth.

**Launch** for Department of Public Health (tender S.O. 635): Fred Nicholls (Pty.), Ltd., Durban. £1,025 delivered.

**Fencing material** for Department of Native Affairs (tender S.O. 818): (1) A. Mosenthal & Co., Port Elizabeth; (2) National Implement Co. (Pty.), Ltd., Johannesburg; (3) Moshal Gevisser (Pty.), Ltd., Durban; (4) J. F. Weir & Co., Ltd., East London; (5) Hunt, Leuchars & Hepburn, Ltd., Pretoria; (6) Woolf Engineering Co., (Pty.), Ltd., Bloemfontein.

**Passenger lifts** for New Magistrate's Courts, Johannesburg (P.W.D. tender 508): Waygood-Otis (S.A.) Ltd., Cape Town.

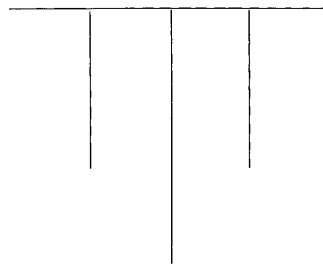
**Vertical Steam boiler** for Fort Beaufort Mental Hospital (P.W.D. tender 489): Union Engineering Supply Co., Ltd., Durban. £309 8s., f.o.b. Liverpool.

**Fencing material** for Stellenbosch-Elsenburg College of Agriculture (tender S.O. 810): (1) Otto Landsberg & Co., Ltd., Cape Town; (2) Premier Gate, Fence & Wire Co., Ltd., Cape Town; (3) Machanick & Co., Ltd., Cape Town.

**Fencing material** for Department of Lands (tender S.O. 823): (1) Moshal Gevisser (Pty.), Ltd., Durban; (2) Hunt Leuchars & Hepburn, Ltd., Pretoria; (3) National Implement Co., (Pty.), Ltd., Johannesburg; (4) Wire Industries, Steel Products & Engineering Co., Ltd., Johannesburg; (5) African Gate & Fence Works (Pty.), Ltd., Newtown, Johannesburg.

**Fertilisers** for Government Institutions (tender S.O. 44): (1) S. Machanick & Co., Cape Town; (2) Safca, Ltd., Durban; (3) Cape Explosives Ltd., Cape Town; (4) Anglo-Continental Guano Works of S.A. (Pty.), Ltd., Johannesburg.

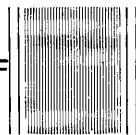
**Electric passenger lift** for Z.A.S.M. House, Pretoria (P.W.D. tender 501): Waygood-Otis (S.A.) Ltd., Cape Town. £1,787.



# Notes on Local Manufactures

— for the —

## Building Industry



**R**EPERCUSSIONS of the war on the supply of architectural furnishings and fittings is to-day a subject of increasing concern to architects and members of the building industry. An essay into some of the steps being taken in this country to meet shortage in imported articles is therefore of contemporary interest. The following are typical examples.

Flooring timber is probably one of the most vexed problems in the building industry to-day. Many of the Union's former sources of supply have been seriously affected, if not cut off completely, by the war. Timber from Baltic countries has been affected most. The interference of the war has certainly rendered the importation of timber into this country difficult and more costly. This position has naturally given a fillip to the use of native timbers for all purposes, and as a consequence many African timbers are enjoying more extensive use, while others are being exploited as much as possible.

It is interesting to learn, therefore, that a new African timber is shortly to be introduced for flooring purposes. This timber is Limba Oak from the Belgian Congo. It is a very serviceable, hard-wearing timber with the advantage of being easy to machine. It is to be manufactured in narrow strip flooring, tongued and grooved and end-matched. The firm which is engaging in this venture is Messrs. Broudo's Saw Mills (Pty.), Ltd., of Industria, Johannesburg. Limba Oak is available in light and dark varieties, the use of which will result in relieving monotony. It is said to have a good figure, and takes a high polish.

This firm is also manufacturing another article — lavatory seats — the importation of which, it is understood, has been affected to some extent by the war. These seats have an unusual type of construction, being made of laminated board, which makes it

impossible for them to crack or warp. They are supplied with a high mahogany finish, and are fitted with special hinges made locally.

Another line is the manufacture of bathroom cabinets, which are being supplied in attractive designs of all types, duco-finished. The door of the cabinet has a full-size flush-fitted  $\frac{1}{4}$ -plate British glass mirror, made locally.

An additional line is the manufacture of doors of laminated construction. These doors consist of a solid core of  $\frac{7}{8}$ " laminated board, which is covered in a variety of ways, such as cross-banding and veneering applied with a special glue and fixed under pressure, or ordinary face plywood. These doors are very substantial, and are available in a wide variety of finishes.

Allied to this is a rather interesting teak window which may be either purpose-made or supplied in a number of popular sizes. These windows are of "solid" construction, the frame being ex  $4\frac{1}{2}$ " x 2", and the sashes finished  $1\frac{1}{2}$ " or  $1\frac{3}{4}$ " thick as desired. Being of "solid" construction they are essentially sturdy.

It would not be an exaggeration to say that the above few examples are a sufficient indication of the trend in South African industry gradually to assume the responsibility for providing building with its necessary materials and fittings. What is being done by one firm is being repeated in other ways by other firms. In building supplies South Africa cannot be expected to vze come self-sufficient at one leap. The important factor is that present circumstances are inducing local industries to lay down the foundations of increasing self-sufficiency, which must extend with experience and growing success.



**BUYERS' GUIDE****ACCOUNTING MACHINES:**

National Cash Register Company of S.A. (Pty.), Ltd.

**AIR COMPRESSORS:**

Hubert Davies & Company, Ltd., Johannesburg.  
Stewarts & Lloyds of South Africa, Ltd.

**AIR SURVEYS:**

Aircraft Operating Company of Africa (Pty.), Limited, Johannesburg.

**ART METAL:**

Fredk. Sage & Co. (S.A.), Ltd., Johannesburg.

**AUTO-TRUCKS:**

Stewarts & Lloyds of South Africa, Ltd.

**AUTOMATIC TELEPHONES:**

Automatic Telephones (S.A.), Ltd., Johannesburg.

**BOILER MOUNTINGS:**

Stewarts & Lloyds of South Africa, Ltd.

**BRICKS:**

The Brick & Potteries Co., Ltd., Johannesburg.  
John J. Kirkness, Pretoria.  
Vereeniging Brick & Tile Co., Vereeniging.  
Hume Pipe Co. (S.A.), Ltd., Cape Town.

**BRICK-MAKING MACHINERY:**

W. S. Thomas & Co. (Pty.), Ltd., Johannesburg.

**BUILDING CONTRACTORS:**

F. C. Holton, Krugersdorp.  
Wm. C. Cowie & Sons, Port Elizabeth.

**BUILDERS' MERCHANTS:**

Hunt, Leuchars & Hepburn, Ltd., Johannesburg and Durban.  
Feder Products (Pty.), Ltd., Johannesburg.  
Rhodesian Timbers, Limited, Johannesburg.

**CEMENT:**

Pretoria Portland Cement Co., Ltd., Johannesburg.  
Concrete Association of South Africa, Johannesburg.  
Hunt, Leuchars & Hepburn, Ltd., Johannesburg and Durban.  
Rhodesian Timbers, Limited, Johannesburg.  
"Snowcrete" — Hunt, Leuchars & Hepburn, Ltd.

**CHAIRS:**

The Globe Chair Factory (Pty.), Ltd., Durban.

**CONCRETE MIXERS:**

Hubert Davies & Company, Ltd., Johannesburg.  
Seligson & Clare, Ltd., Johannesburg.

**COOKING APPARATUS:**

Ashwell & Nesbit, Limited, Johannesburg.

**CRUSHERS:**

Hubert Davies & Company, Ltd., Johannesburg.  
W. S. Thomas & Co. (Pty.), Ltd., Johannesburg.

**CULLAMIX & COLORCRETE:**

Hunt, Leuchars & Hepburn, Ltd., Johannesburg and Durban.

**DOORS (STEEL):**

F. Gwilliam (Pty.), Limited, Johannesburg.

**DOOR FITTINGS:**

F. Gwilliam (Pty.), Limited, Johannesburg.  
Kirkwood & Sons, Ltd., Port Elizabeth.

**ELECTRIC RANGES:**

Durban Falkirk Iron Co., Ltd., Durban.

**ELECTRICAL ENGINEERS:**

The British General Electric Co., Ltd., Johannesburg.

**ENGINEERING CONTRACTORS & IMPORTERS:**

Victor Kent (Natal) (Pty.), Ltd., Durban.

**ENGINES (Oil and Other):**

Hubert Davies & Company, Ltd., Johannesburg.  
Stewarts & Lloyds of South Africa, Ltd.  
W. S. Thomas & Co. (Pty.), Ltd., Johannesburg.

**ELECTRIC-GENERATING PLANT:**

Hubert Davies & Company, Ltd., Johannesburg.  
Stewarts & Lloyds of South Africa, Ltd.

**EXPLOSIVES:**

African Explosives & Industries, Ltd., Johannesburg.

**FIRE APPLIANCES:**

Stewarts & Lloyds of South Africa, Ltd.

**FLOORING:**

Feder Products (Pty.), Ltd., Johannesburg.  
Broudo's Saw Mills (Pty.), Ltd., Industria.  
Hunt, Leuchars & Hepburn, Ltd., Johannesburg and Durban.  
Mazista Slate Quarries, Ltd., Johannesburg.  
Rhodesian Timbers, Limited, Johannesburg.

**FURNITURE & FIXTURES:**

Peach & Hatton, Ltd., Durban.  
Thesen & Co., Ltd., Durban, Cape Town and Knysna.  
Broudo's Saw Mills (Pty.), Ltd., Industria.

**GLASS:**

Herbert Evans & Co., Johannesburg.  
Rhodesian Timbers, Limited, Johannesburg.

**HARD BOARDS:**

Hunt, Leuchars & Hepburn, Ltd., Johannesburg and Durban.  
Kirkwood & Sons, Ltd., Port Elizabeth.

**HYDRO-ELECTRIC PLANT:**

Stewarts & Lloyds of South Africa, Ltd.

**HYDRAULIC RAMS:**

Stewarts & Lloyds of South Africa, Ltd.

**IRONMONGERY:**

Kirkwood & Sons, Ltd., Port Elizabeth.  
Umgeni Iron Works (Pty.), Ltd., Durban.

**JOINERS:**

Broudo's Saw Mills (Pty.), Ltd., Industria.  
Hunt, Leuchars & Hepburn, Ltd., Johannesburg and Durban.  
Rhodesian Timbers, Limited, Johannesburg.

**MACHINERY & IMPLEMENT MERCHANTS:**

Seligson & Clare, Ltd., Johannesburg.  
Guest, Sykes, Ltd., Johannesburg.

**METAL WINDOWS:**

Crittall-Hope Metal Windows (South Africa), Ltd.

**OILS:**

C. C. Wakefield & Co., Ltd., Johannesburg.

**OIL & STEAM PURIFIERS:**

Stewarts & Lloyds of South Africa, Ltd.

**PAINTS:**

Lewis Burger & Sons (S.A.), Ltd., Johannesburg and Durban.  
Herbert Evans & Co., Johannesburg.  
Hunt, Leuchars & Hepburn, Ltd., Johannesburg and Durban.

**PIPES — CONCRETE:**

J. Wright & Sons, Limited, Durban.  
Hume Pipe Co. (S.A.), Ltd., Cape Town.

**PRINTING BLOCKS:**

Electric Process Engraving Co., Johannesburg.

**PLYWOODS:**

Furniture Enterprises (Pty.), Ltd., Johannesburg.  
Plywoods, Ltd., Parow, C.P.  
Raymond Plywood (Pty.), Ltd., Johannesburg.  
Rhodesian Timbers, Limited, Johannesburg.

**PUMPS:**

Patrick Murray (Pty.), Ltd., Durban.  
Guest, Sykes, Ltd., Johannesburg.  
Stewarts & Lloyds of South Africa, Ltd.

**REINFORCED CONCRETE:**

Hunt, Leuchars & Hepburn, Ltd., Johannesburg and Durban.  
A. S. Joffe, Johannesburg.  
Industrial Construction Co. (Pty.), Ltd., Johannesburg.

**REFRIGERATION:**

Guest, Sykes, Ltd., Johannesburg.

**ROAD MACHINERY:**

W. S. Thomas & Co., Ltd., Johannesburg.  
Guest, Sykes, Ltd., Johannesburg.

**ROOFING MATERIALS:**

Hunt, Leuchars & Hepburn, Ltd., Johannesburg and Durban.  
John J. Kirkness, Pretoria.  
Mazista Slate Quarries, Ltd., Johannesburg.  
Hume Pipe Co. (S.A.), Ltd., Cape Town.  
Guest, Sykes, Ltd., Johannesburg.

**SAW MILLS:**

Broudo's Saw Mills (Pty.), Ltd., Industria.

**SHOP-FITTERS:**

Fredk. Sage & Co. (S.A.), Ltd., Johannesburg.

**SLATES:**

Mazista Slate Quarries, Ltd., Johannesburg.

**STEAM VALVES (high pressure)**

Stewarts & Lloyds of South Africa, Ltd.

**STEEL CEILINGS:**

Herbert Evans & Co., Ltd., Johannesburg.

**STRUCTURAL STEEL:**

Dorman, Long (Africa), Ltd., Johannesburg.

**STONE-WORKING PLANT:**

Bellamy & Lambie, Johannesburg.

**STONE-CRUSHING PLANT:**

W. S. Thomas & Co., Ltd., Johannesburg.

**TIMBER MERCHANTS:**

Hunt, Leuchars & Hepburn, Ltd., Johannesburg and Durban.  
Rhodesian Timbers, Limited, Johannesburg.  
Kenya Timbers, Ltd., Johannesburg.  
Furniture Enterprises (Pty.), Ltd., Johannesburg.  
Broudo's Saw Mills (Pty.), Ltd., Industria.

**TEAK WINDOWS:**

Hunt, Leuchars & Hepburn, Ltd., Johannesburg and Durban.  
Broudo's Saw Mills (Pty.), Ltd., Industria.

**TUBES & FITTINGS (Steel):**

Stewarts & Lloyds of South Africa, Ltd.

**TURBINES & PUMPS:**

Stewarts & Lloyds of South Africa, Ltd.

**TUBULAR STEEL POLES:**

Stewarts & Lloyds of South Africa, Ltd.

**TYRES:**

Firestone, S.A. (Pty.), Ltd., Port Elizabeth.  
India Tyre & Rubber Co. (S.A.) (Pty.), Ltd., Durban.

**UNIFORM MANUFACTURERS:**

H. J. Henochsberg (Pty.), Ltd., Johannesburg.

**VALVE & WATER SPECIALTIES:**

Stewarts & Lloyds of South Africa, Ltd.

**VENTILATORS:**

W. S. Thomas & Co., Ltd., Johannesburg.

**WALLPAPERS:**

Herbert Evans & Co., Ltd., Johannesburg.

**WATERPROOFING:**

Hunt, Leuchars & Hepburn, Ltd., Johannesburg and Durban.

**WIRE & RAILINGS:**

The "Premier" Gate, Fence & Wire Co., Ltd., Cape Town.

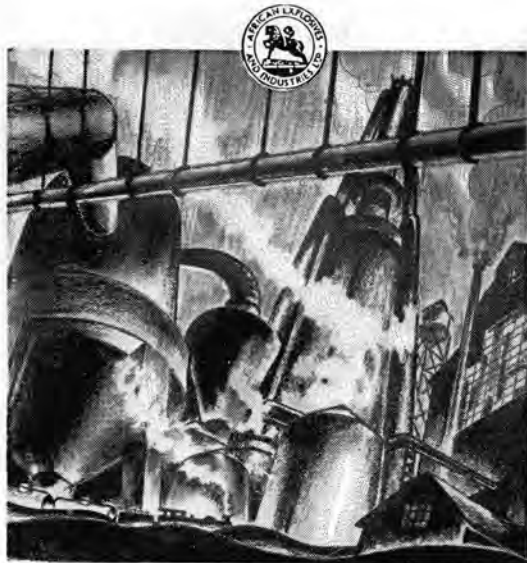
**WOOD-FIBRE BOARDS:**

Hunt, Leuchars & Hepburn, Ltd., Johannesburg and Durban.  
Selinite Products (Pty.), Ltd., Rosburgh, Natal.

**WOOD PRESERVATIVES:**

S. Harding, Johannesburg.  
B. Saphra, Johannesburg.





# ACID

HYDROCHLORIC  
SULPHURIC  
NITRIC

*C.P. and Commercial  
Grade*

**AFRICAN  
EXPLOSIVES**  
*and*  
**INDUSTRIES**  
*Limited*

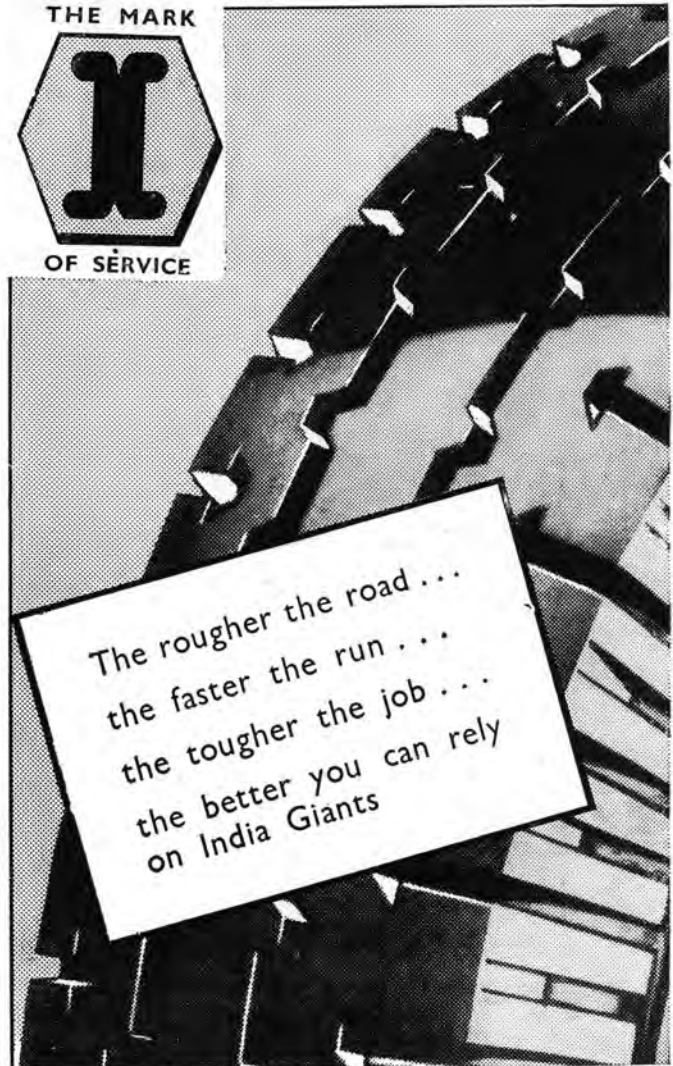
Head Office and Sales Department :  
14, HOLLARD STREET, JOHANNESBURG.  
P.O. Box 1122. Telephone 33-6101.  
Factory : Modderfontein, Transvaal.

# THE FINEST 'GIANT' TYRES MADE

THE MARK



OF SERVICE



The rougher the road ...  
the faster the run ...  
the tougher the job ...  
the better you can rely  
on India Giants

# INDIA 'GIANTS'

MASTERS OF MILEAGE

OBTAINABLE FROM ALL GARAGES.

**'DEFY'**  
**RANGES ARE**  
*thoroughly*  
**TESTED!**



Every Defy Electric Range is thoroughly tested before it leaves the Factory. Our research department of experts makes every test to assure complete satisfaction with Defy Ranges. Illustrated here is the Model HW., available with either 3 or 4 hotplates and a large oven; it is also fitted with that extra safety feature—the Pilot Light—which indicates when the stove is off at the main switch. This stove was specially designed to meet P.W.D. requirements.

**DURBAN FALKIRK IRON CO., LTD.**

P.O. Box 948, DURBAN.

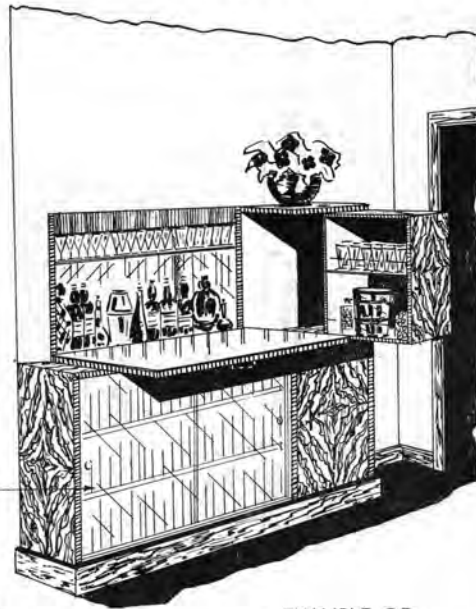
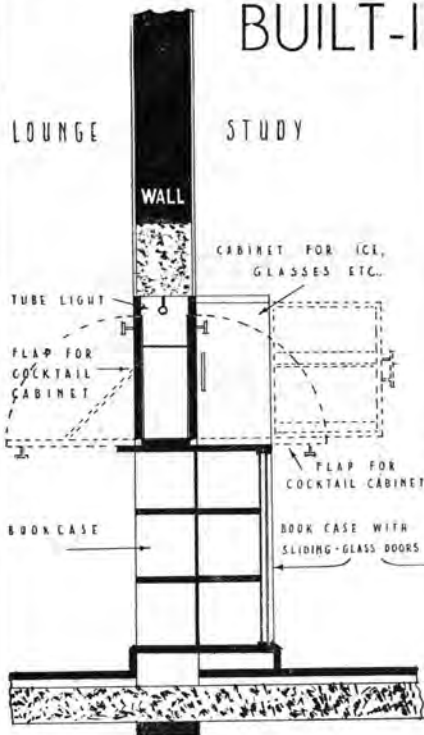
Johannesburg Showrooms :-

BRADLOW'S BUILDINGS, MARKET STREET.

**PEACH & HATTON, LTD., DURBAN**

**BUILT-IN WARDROBES & FIXTURES**

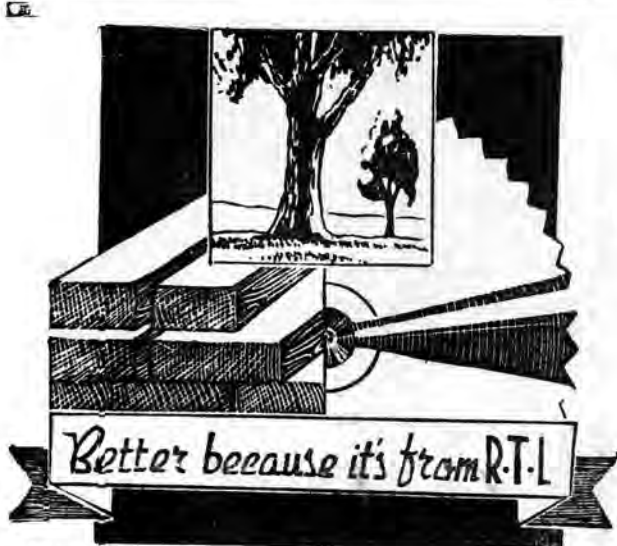
IN MODERN AND  
 PERIOD STYLES



EXAMPLE OF  
 BUILT-IN BOOKCASE &  
 COCKTAIL - CABINET

SHOPFITTING  
 PANELLING  
 INTERIORS  
 FURNITURE

Designing Office and Factory:  
 637 SMITH ST., DURBAN  
 PHONE 20288.



FOR EVERY DESCRIPTION OF  
IMPORTED AND SOUTH AFRICAN  
**TIMBER**

Stock and purpose made joinery a speciality.  
"Insulite" Insulating Boards.  
Glass of all descriptions.

Write for Quotations to:

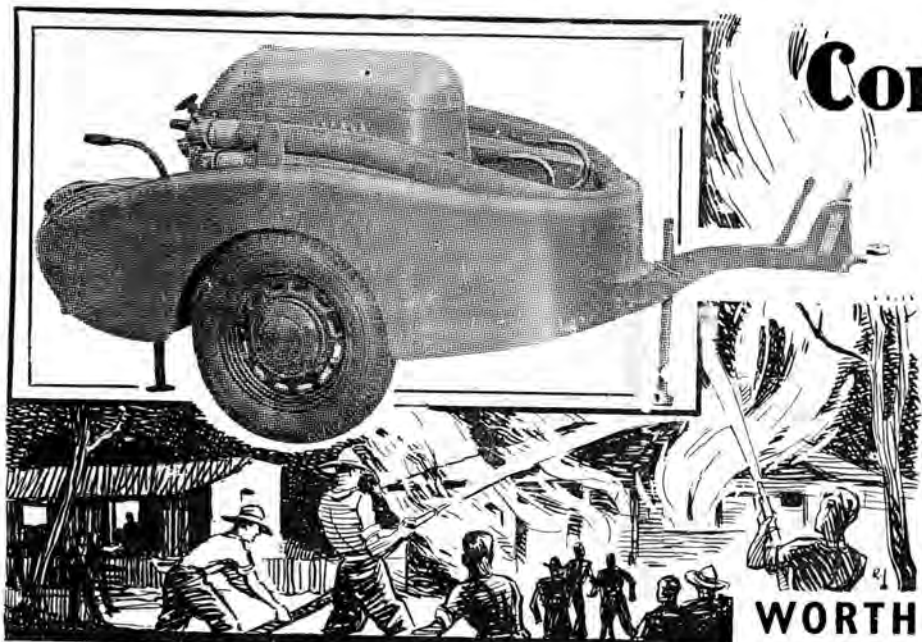
# RHODESIAN TIMBERS LIMITED

Box 5530.

Head Office: MAIN HOUSE, 95, MAIN STREET, JOHANNESBURG.

Phones 33-6546/7/8/9.

Branches at Durban, Springs, Bulawayo and London. Also at Lourenco Marques.



## Combat the **FIRE MENACE!**

**FIRE!** What limitless destruction may be wrought by its outbreak in your district! See that you are well equipped to overcome this menace by installing the new portable fire fighting apparatus—the Worthington Simpson Fire Pump. Easily handled, it will pump water to the necessary pressure from your available source of supply, whether it be a town main under pressure or a river.

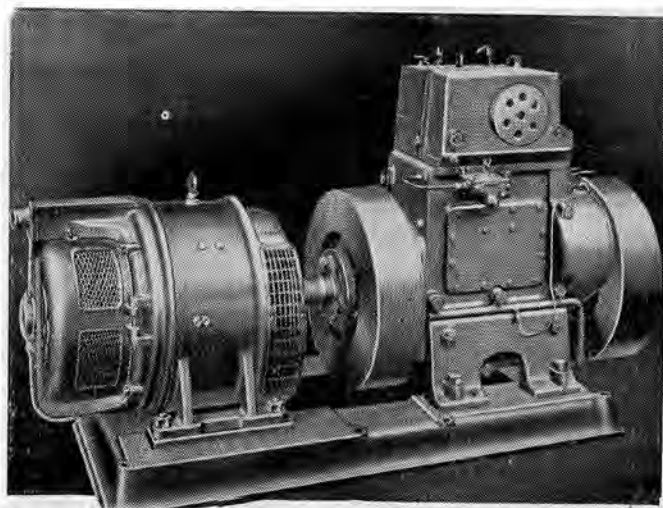
NOTE: THOUSANDS OF THESE UNITS HAVE BEEN SOLD TO THE BRITISH GOVERNMENT FOR A. R. P. SERVICES

## WORTHINGTON-SIMPSON MOBILE FIRE PUMPS

Write to our nearest branch for full particulars and price

**Stewarts and Clonds of South Africa Limited.**

BRANCHES IN ALL PRINCIPAL TOWNS OF THE UNION AND RHODESIA



There are hundreds of Ruston Hornsby Oil Engines in use in South Africa providing light and power for all purposes. Sizes from  $\frac{1}{4}$  K.W. to 300 K.W.

PRICES ON APPLICATION.

# Hubert Davies & Co. Ltd.

HUDACO HOUSE, RISSIK STREET SOUTH, JOHANNESBURG.  
P.O. Box 1386. Phone 33-2341.

Branches throughout South Africa.

## The Brick and Potteries Company, Limited

Manufacturers of the following :

“HERONMERE” BRICKS  
DOWN DRAUGHT KILN FACING BRICKS  
GOLDEN BROWN FACING BRICKS  
HOFFMAN KILN BRICKS  
SPECIALS

Prices will be furnished on application to :  
THE SALES MANAGER, 'Phone 32 - 2670.

Head Office :

TRUST BUILDINGS,  
Cor. Fox and Loveday Streets,  
JOHANNESBURG.  
'Phone 33 - 3414.

Works :

STEVENS ROAD,  
Off Eloff Street Extension, Booysens,  
JOHANNESBURG.  
P.O. Box 155. 'Phones 33 - 4158/9.

FOR MODERN FLOORS  
**“ AZROCK ”**  
 CARPET AND INDUSTRIAL TILE  
*Beauty is an Outstanding AZROCK Feature.*

Supplied and Installed by  
**MAZISTA SLATE QUARRIES, LTD.**

(Sole Distributors),  
 Mazista House,

Phone 22 - 2241/2.

96, Anderson Street, Johannesburg.

P.O. Box 6902.

“MAZISTA SLATE” for Roofing, Sills, Paving, Skirting, Shelving, etc.

“MAZISTA MATRIX” and “LEIDEK MASTIC” for Flat Roofs.

“FEDER” for Partitions, Insulation of Flat Roofs, etc.

“FEDACOUST” for Ceilings.

SPECIALISTS IN:

**STONE-WORKING PLANT  
 AND ACCESSORIES**

DIAMOND IMPREGNATED AND  
 SILICON CARBIDE RIMMED  
 SAWBLADES.

**BELLAMY & LAMBIE**

AGENTS FOR:  
**THE ANDERSON - GRICE  
 COMPANY, LTD.**  
 OF CARNOUSTIE, SCOTLAND.

Offices and Stores:

LAMWAL HOUSE, 7 - 8 THE CRESCENT, VILLAGE MAIN,  
 JOHANNESBURG, 12.

P.O. Box No. 453. Telephone: 22-9731. Telegrams: “BELLAMBIE.”

# ● "ATLAS A" WOOD PRESERVATIVE

**Permanently** preserves timber from white ant attack.  
Arrests and prevents "dry" rot and fungi.  
Toughens timber and renders it more than four times  
as resistive to fire.  
Now specified (after convincing proof) by Govern-  
ment Departments, Municipalities and Architects.

FULL PARTICULARS FROM :

**S. HARDING,**  
**MINING MATERIAL MERCHANT,**  
**Phones 33-6635, 33-9200 — Box 2233 — JOHANNESBURG.**

TELEPHONE 110.

P.O. Box 598.

## CAXTON PRINTING WORKS

(PTY.) LTD.,

PRINTERS, STATIONERS,  
BOOKBINDERS RULERS.

265 PRETORIUS STREET,  
PRETORIA.

# F. C. HOLTON,

## BUILDER AND CONTRACTOR

to Public Works Department and Municipalities

Some Recent Contracts include :

KRUGERSDORP PASS OFFICE.

NIGEL PASS OFFICE.

BOKSBURG AUTOMATIC TELEPHONE EXCHANGE.

BALFOUR POST OFFICE.

WARD BLOCKS AT WITRAND INSTITUTION for FEEBLEMINDED  
STANDERTON RESIDENCY.

PLEASE NOTE NEW ADDRESS:—

**STAND 41, MAIN REEF ROAD, ROODEPOORT.**

Telephone 576. P.O. Box 135, ROODEPOORT.

# JOHN J. KIRKNESS,

(THE GROENKLOOF BRICK, TILE AND POTTERY FACTORY, LTD.)

**PRETORIA.**

Works : P.O. Box 44; 'Phones 3140 - 3141.

Head Office : Palace Street, 'Phone 30.

*Manufacturers of :*

**HOLLOW-WARE**  
**KLOMPJES**  
**BRICKS**

**ROOFING TILES**  
**QUARRY TILES**  
**POTTERY**

Contractors to the Public Works Department, S.A.R. and H. Administration, Pretoria Municipality,  
S.A. Iron and Steel Corporation, and many other public bodies.

*Representatives in the Union and Rhodesia :*

Johannesburg — Douglas, Son & Pugh (Pty.), Ltd.

Cape Town — R. Heddie & Co.

Rhodesia — Messrs. Harrison & Hughson, Bulawayo and

Bloemfontein — Woolf Engineering Co. (Pty.), Ltd.

Salisbury.

Kimberley — Angus Galloway.

Reef — Hillman Bros., Springs, Brakpan, Benoni, Krugersdorp.



