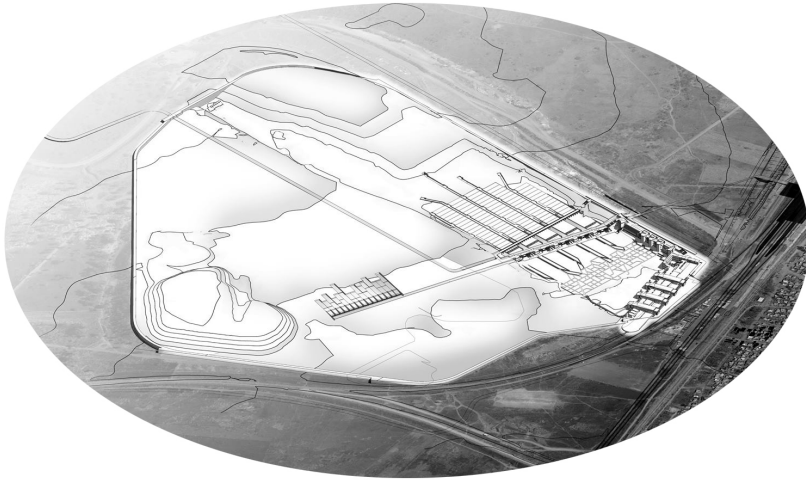


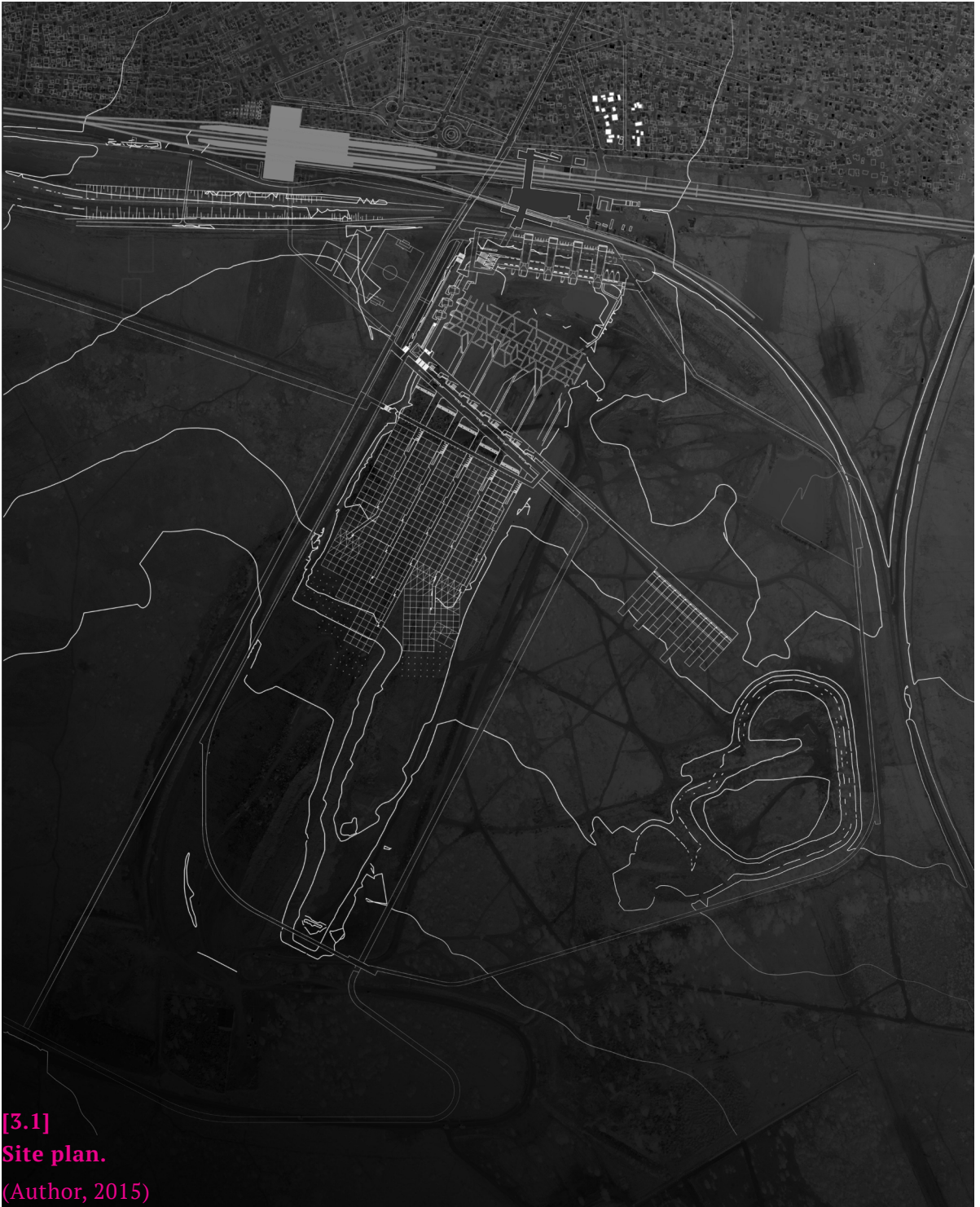
Part

3

Communication

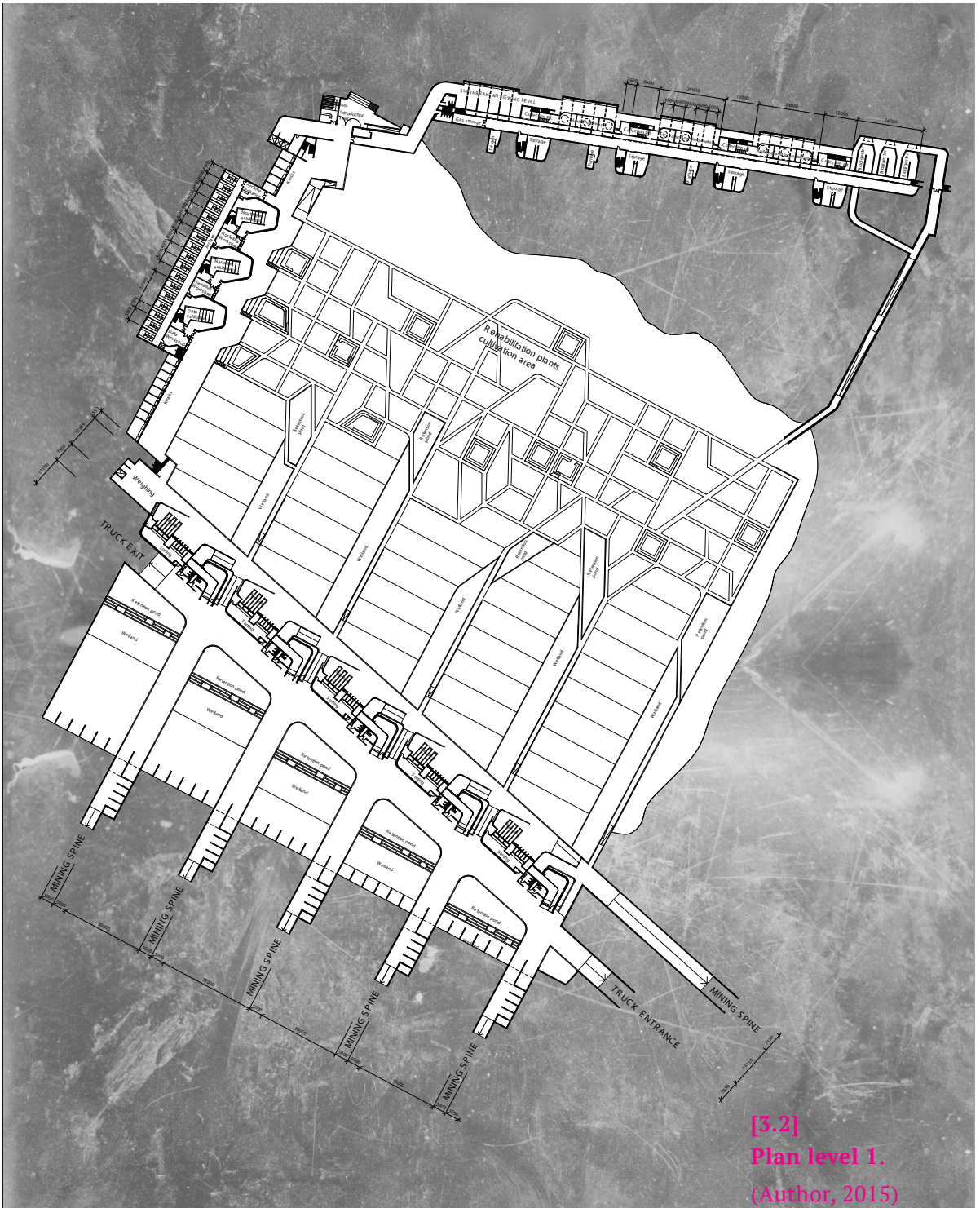


Interpreting and communicating findings.

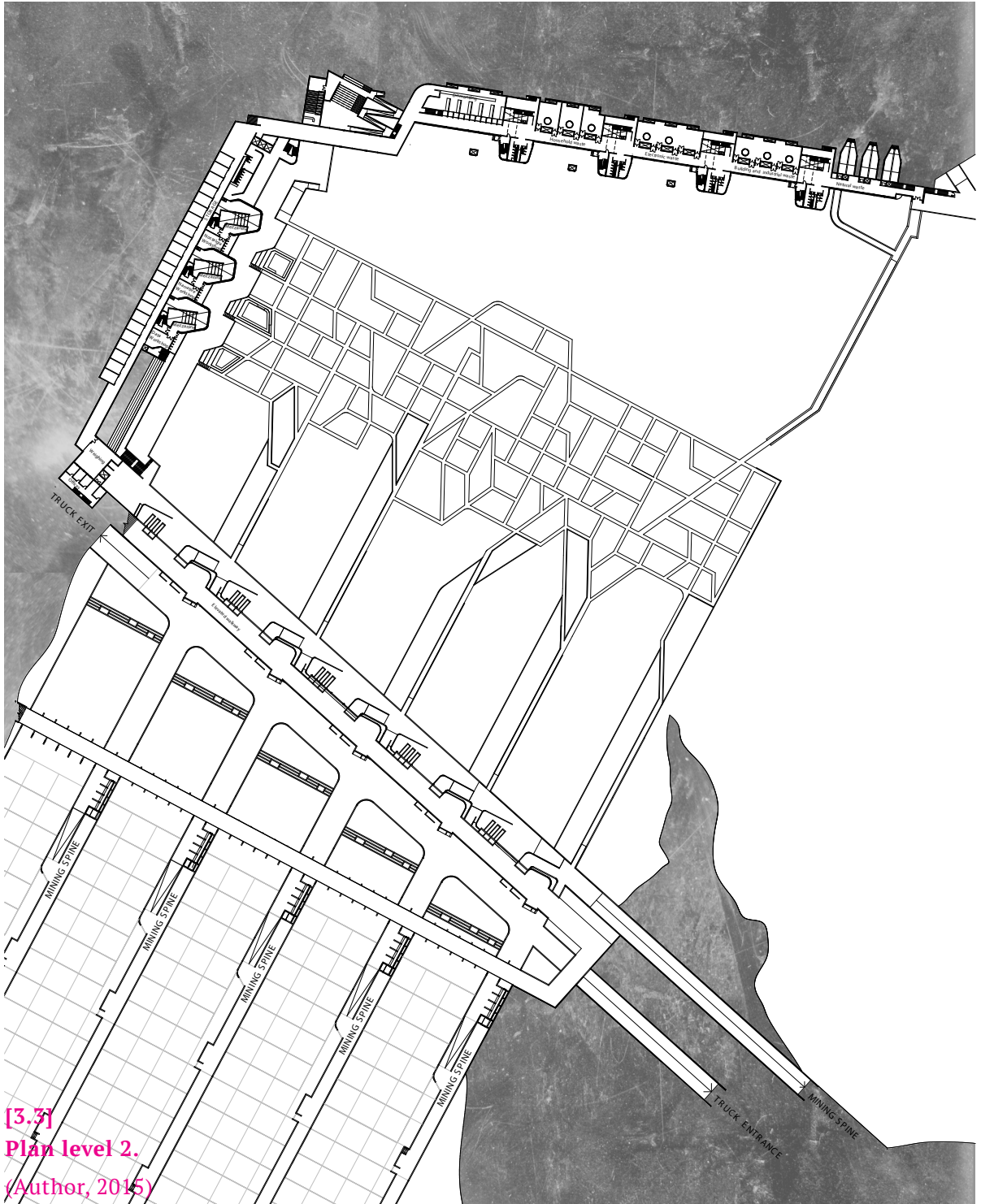


[3.1]
Site plan.

(Author, 2015)



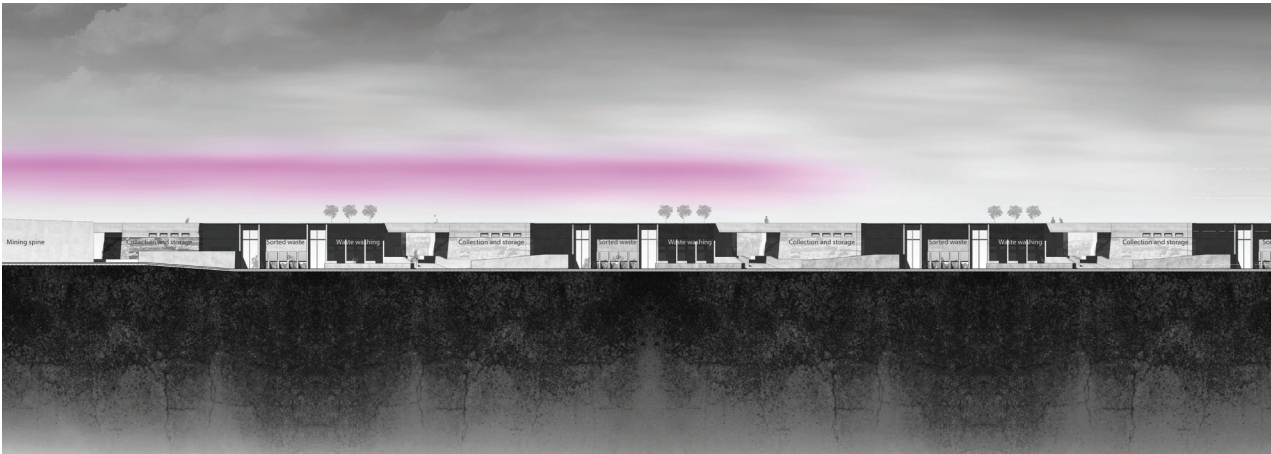
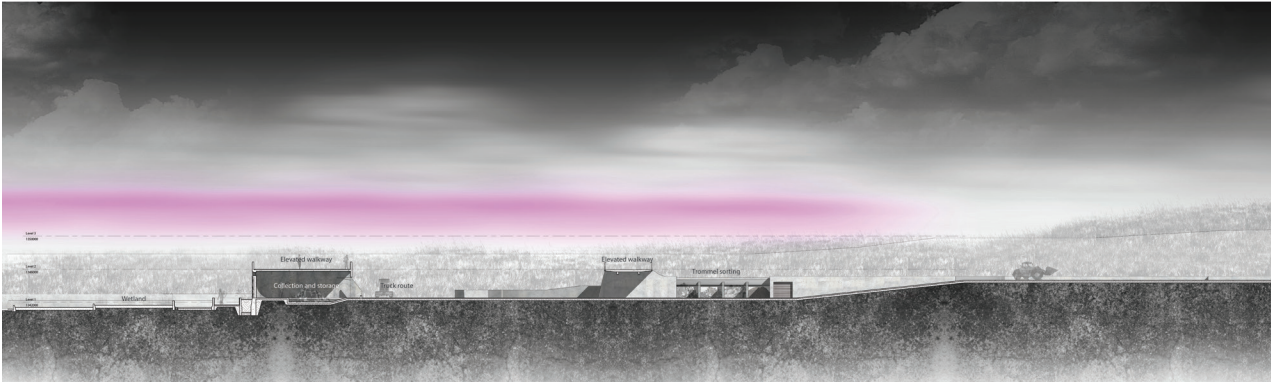
[3.2]
Plan level 1.
(Author, 2015)



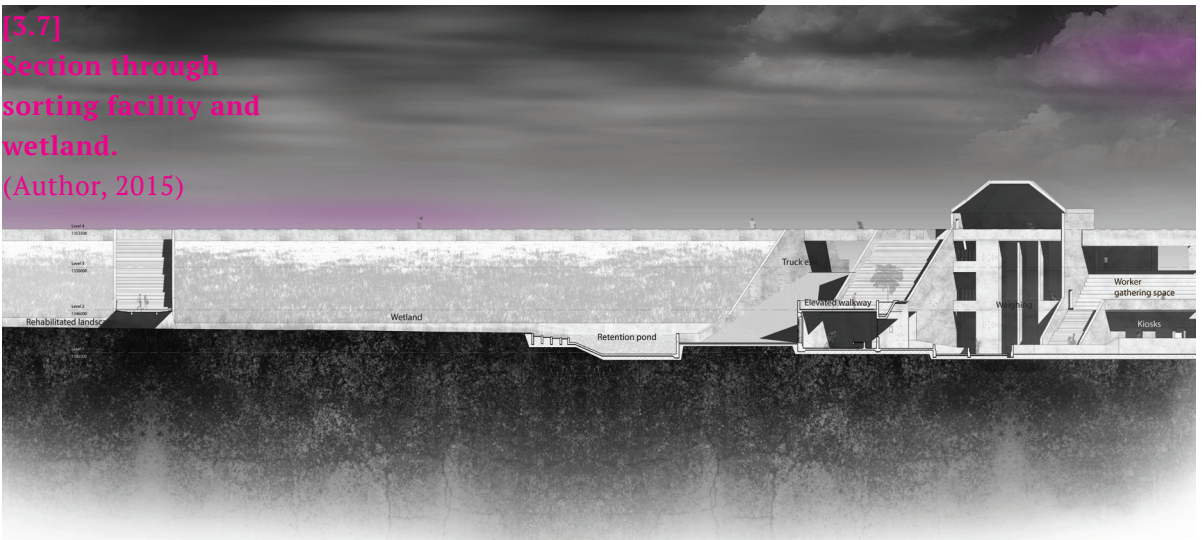
[3.3]
Plan level 2.
(Author, 2015)

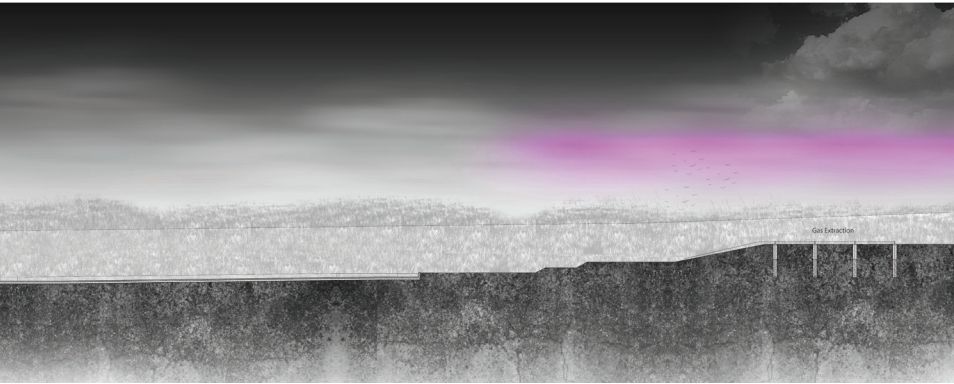


[3.4]
Plan level 3.
(Author, 2015)

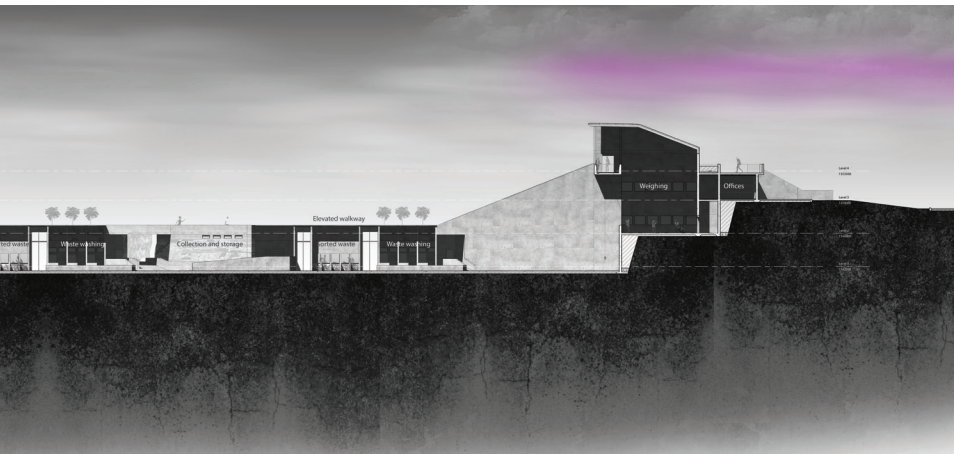


[3.7]
Section through
sorting facility and
wetland.
(Author, 2015)

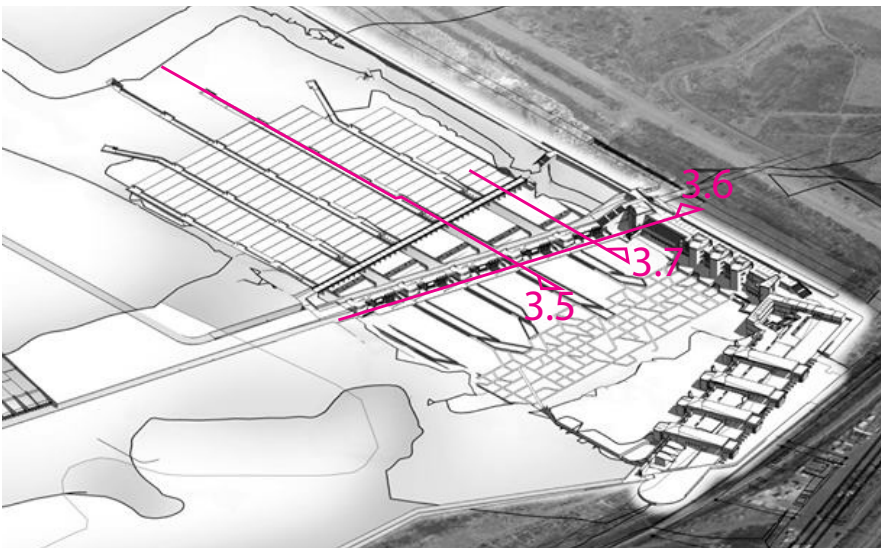




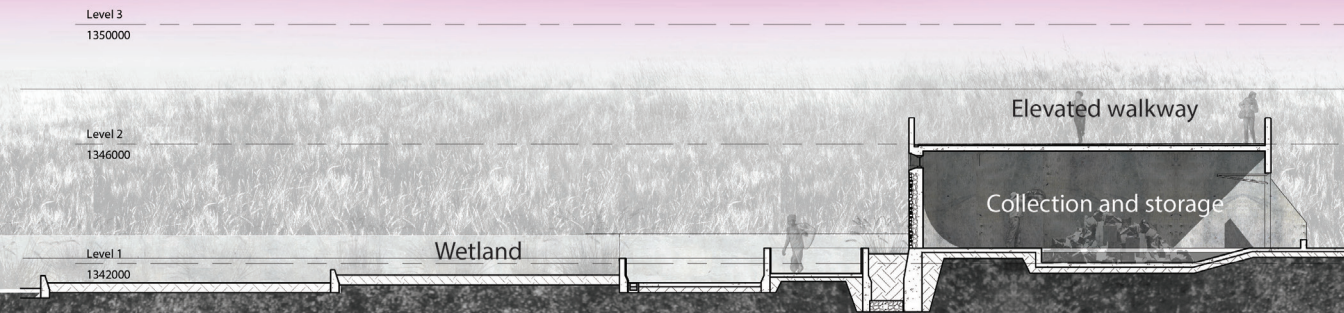
[3.5]
Section through mining spine.
(Author, 2015)



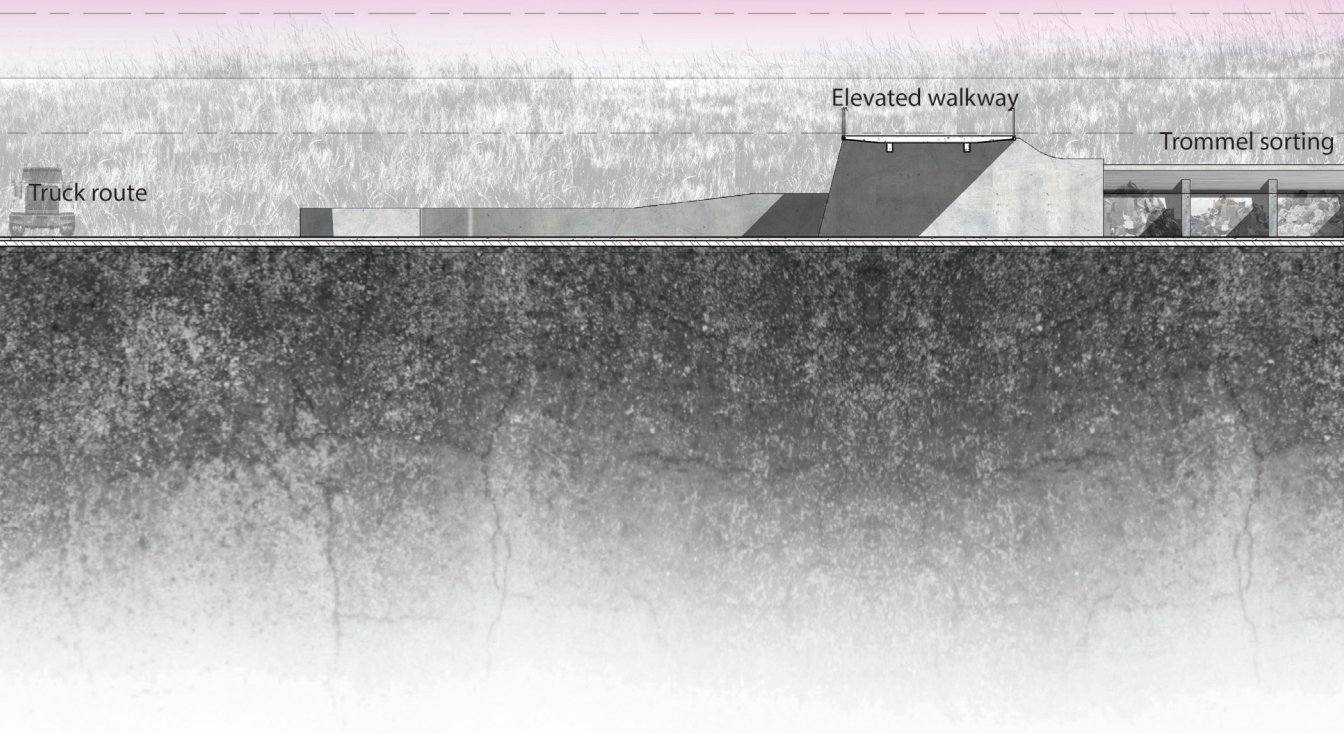
[3.6]
Section through mining spine.
(Author, 2015)



[3.8]
Axonometric of site
(Author, 2015)



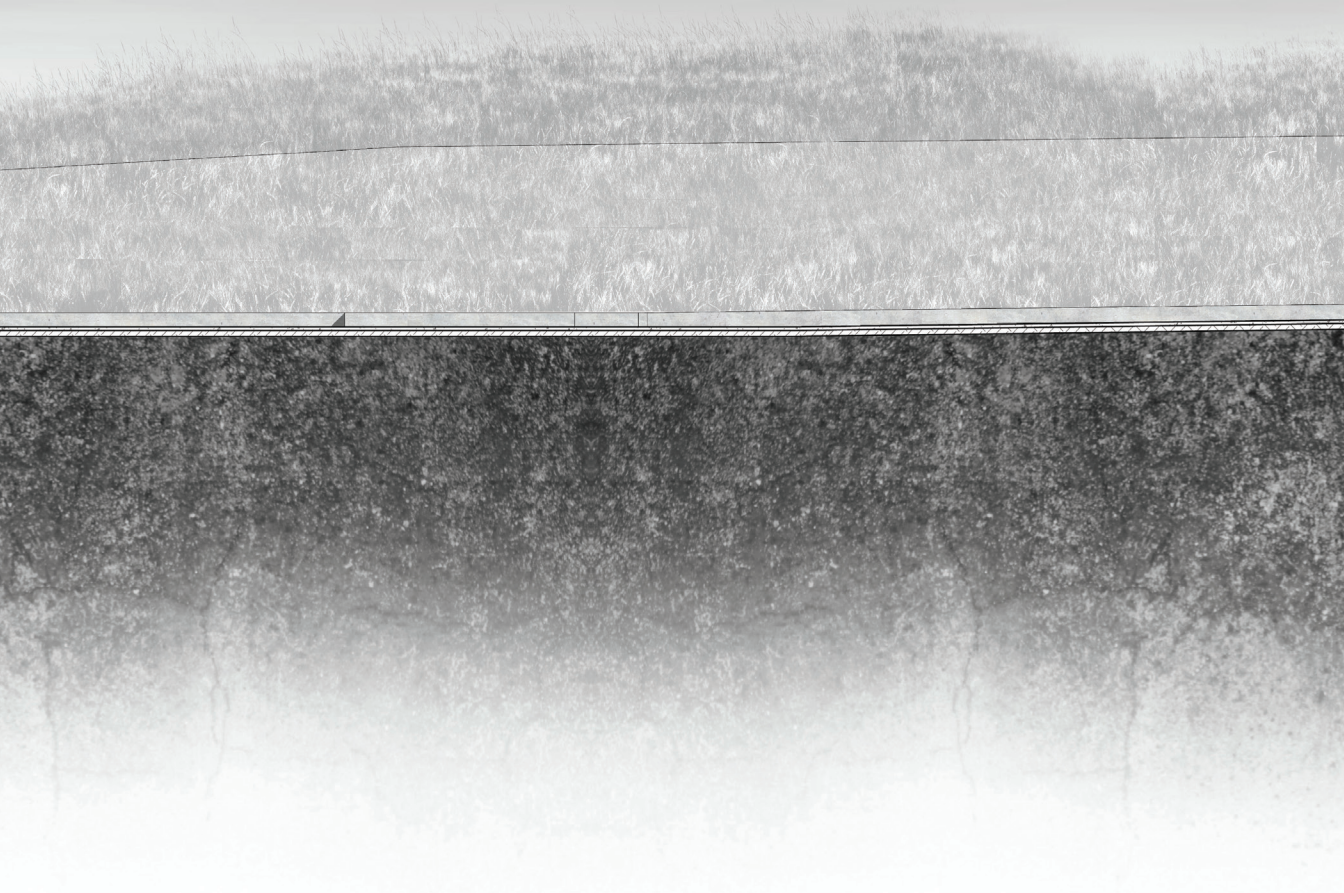
[3.5]
Section through
mining spine.
(Author, 2015)

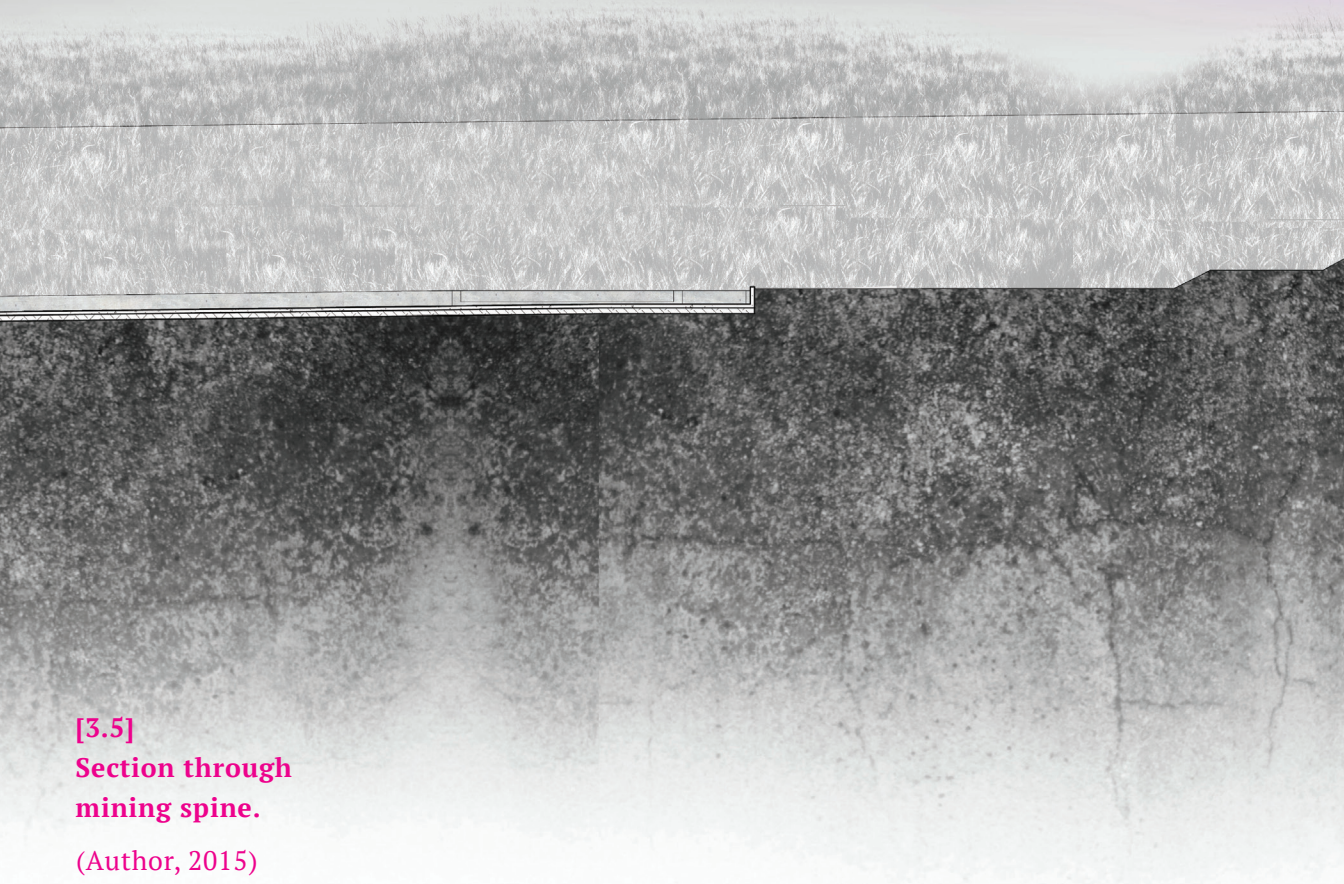




[3.5]
Section through
mining spine.

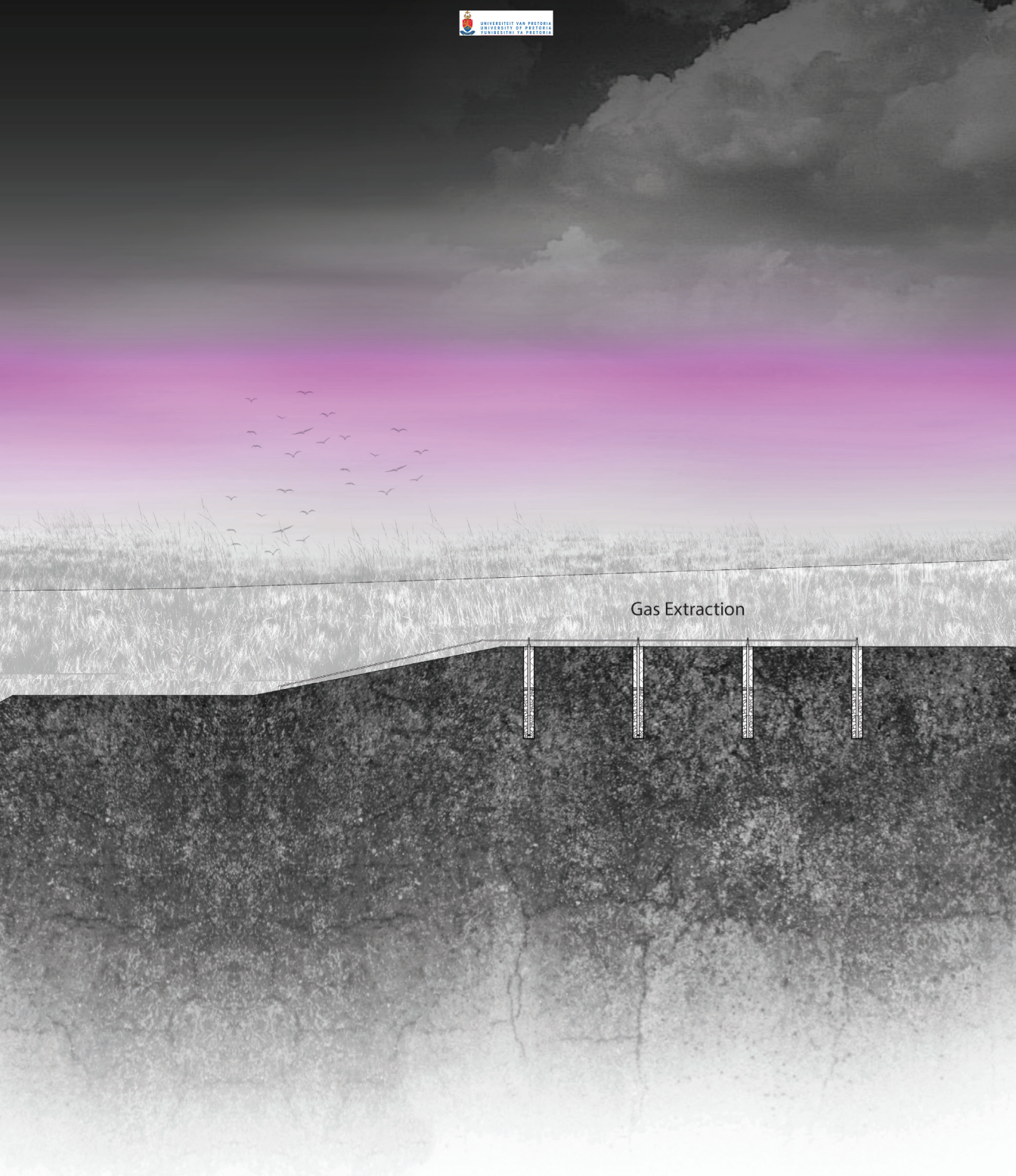
(Author, 2015)





[3.5]
**Section through
mining spine.**

(Author, 2015)





[3.6]
Section through
mining spine.

(Author, 2015)





[3.6]
Section through
mining spine.

(Author, 2015)



washing

Weighing

Offices

Level 4
1353500

Level 3
1350000

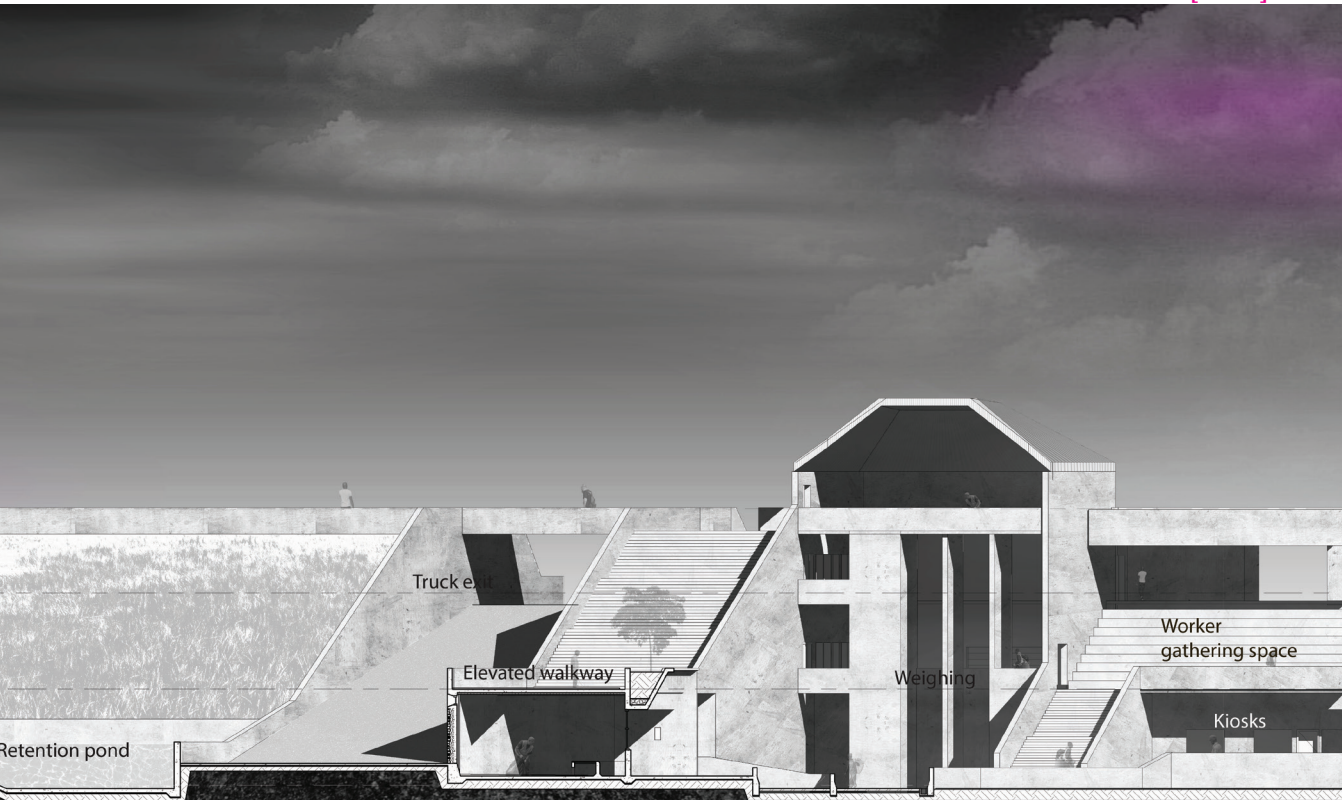
Level 2
1346000

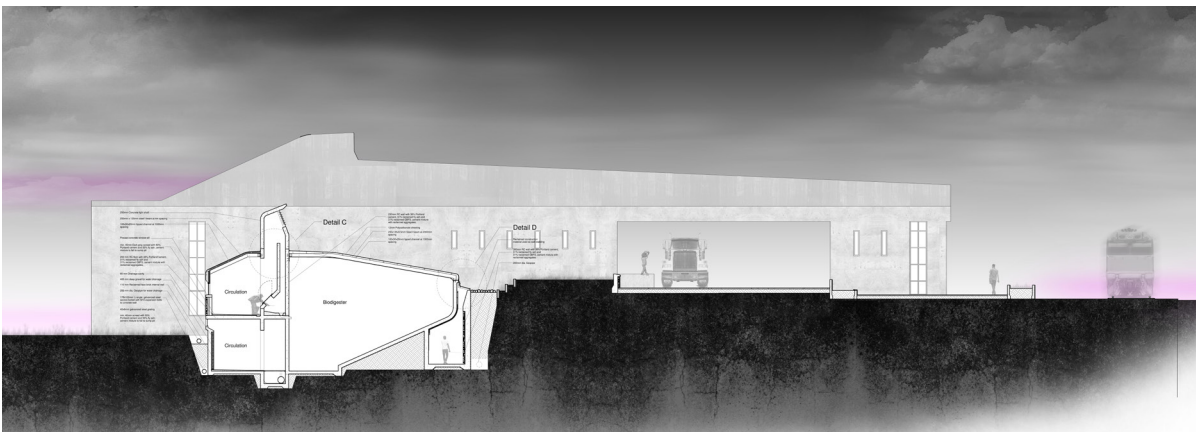
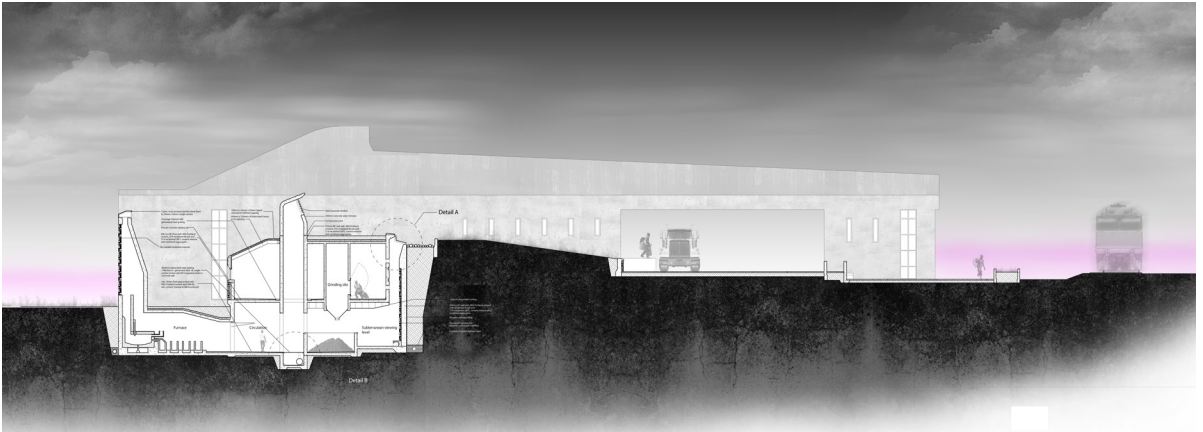
Level 1
1342000



[3.7]
Section through
sorting facility and
wetland.

(Author, 2015)





[3.9]
Section through
electronic waste
processing.

(Author, 2015)

[3.10]
Section through
service core and
market space.

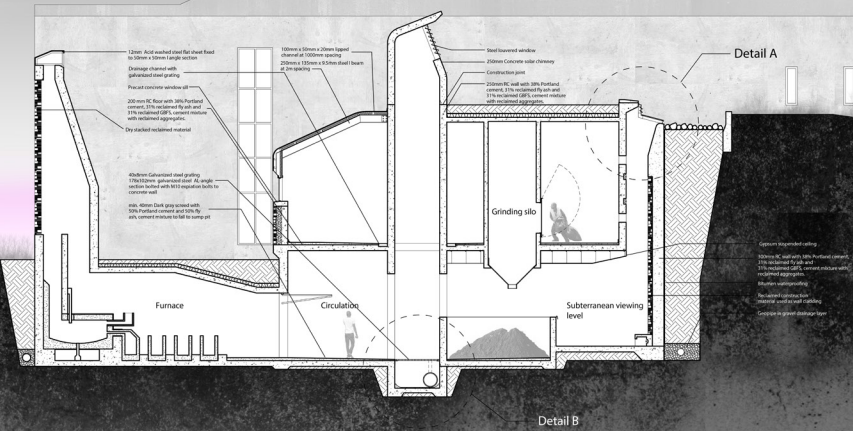
(Author, 2015)

[3.11]
Section through
natural waste pro-
cessing.

(Author, 2015)

[3.12]
Axonometric of site.

(Author, 2015)



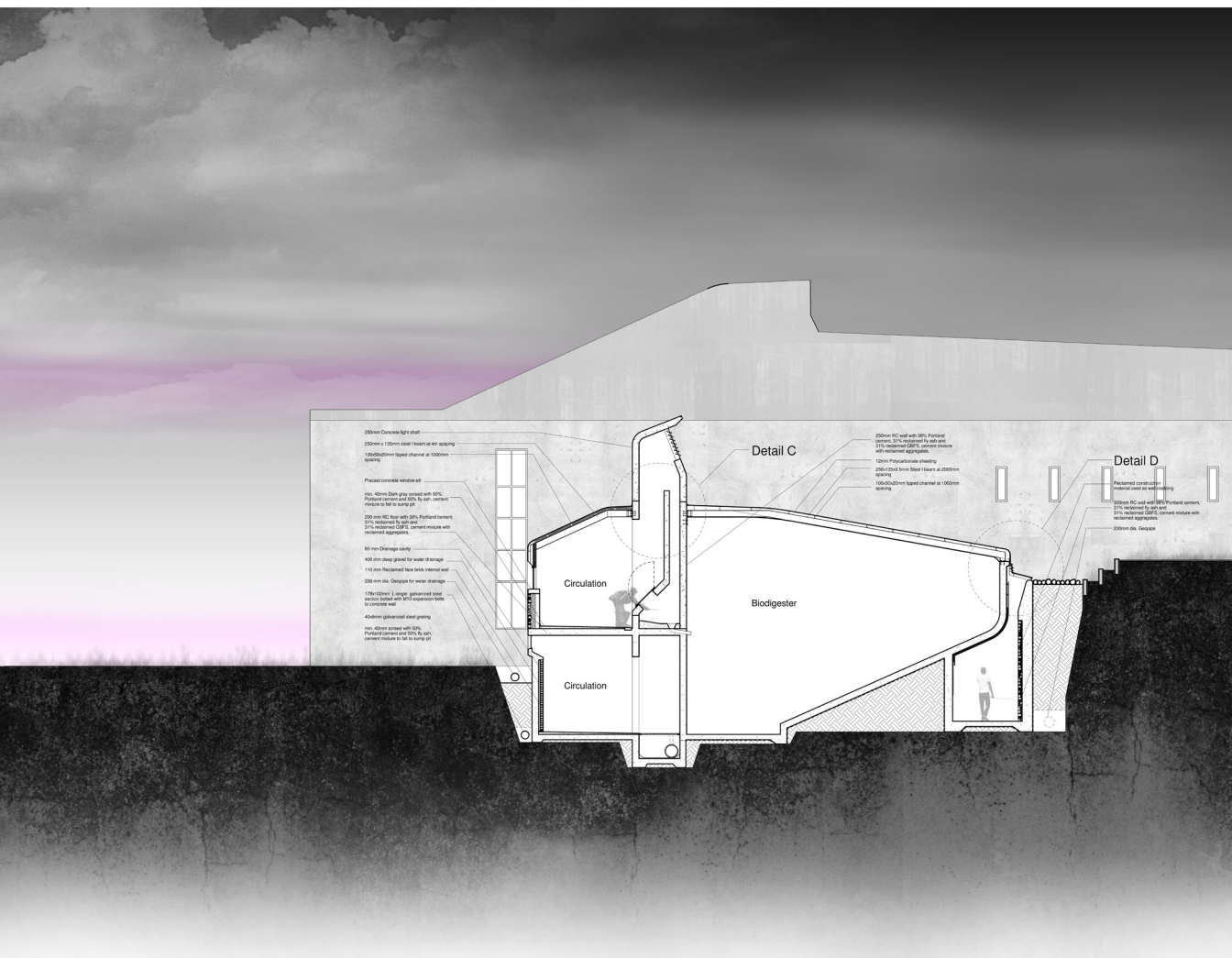
[3.9]
Section through
electronic waste
processing
(Author, 2015)





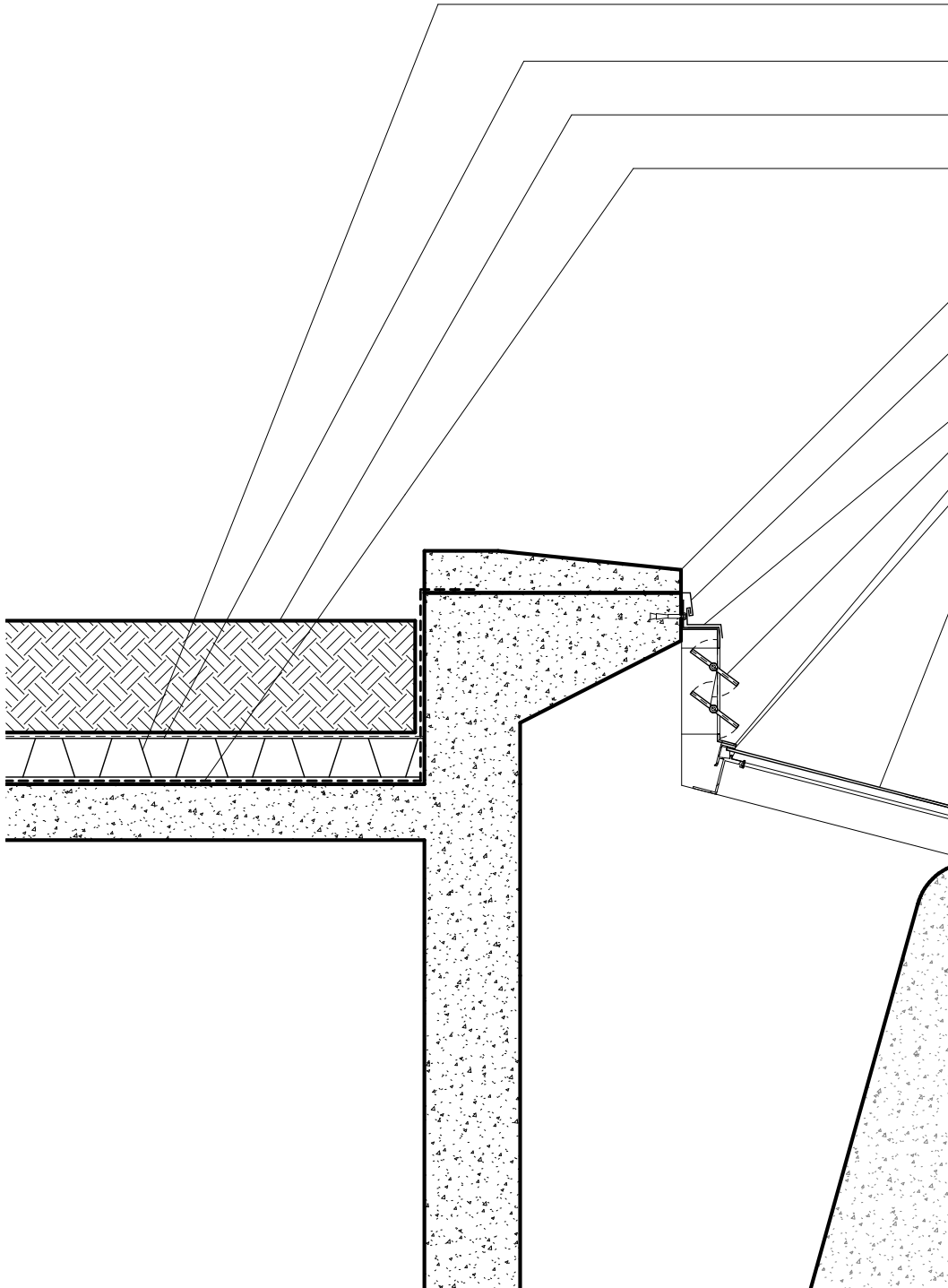
[3.10]
Section through
service core and
market space
(Author, 2015)

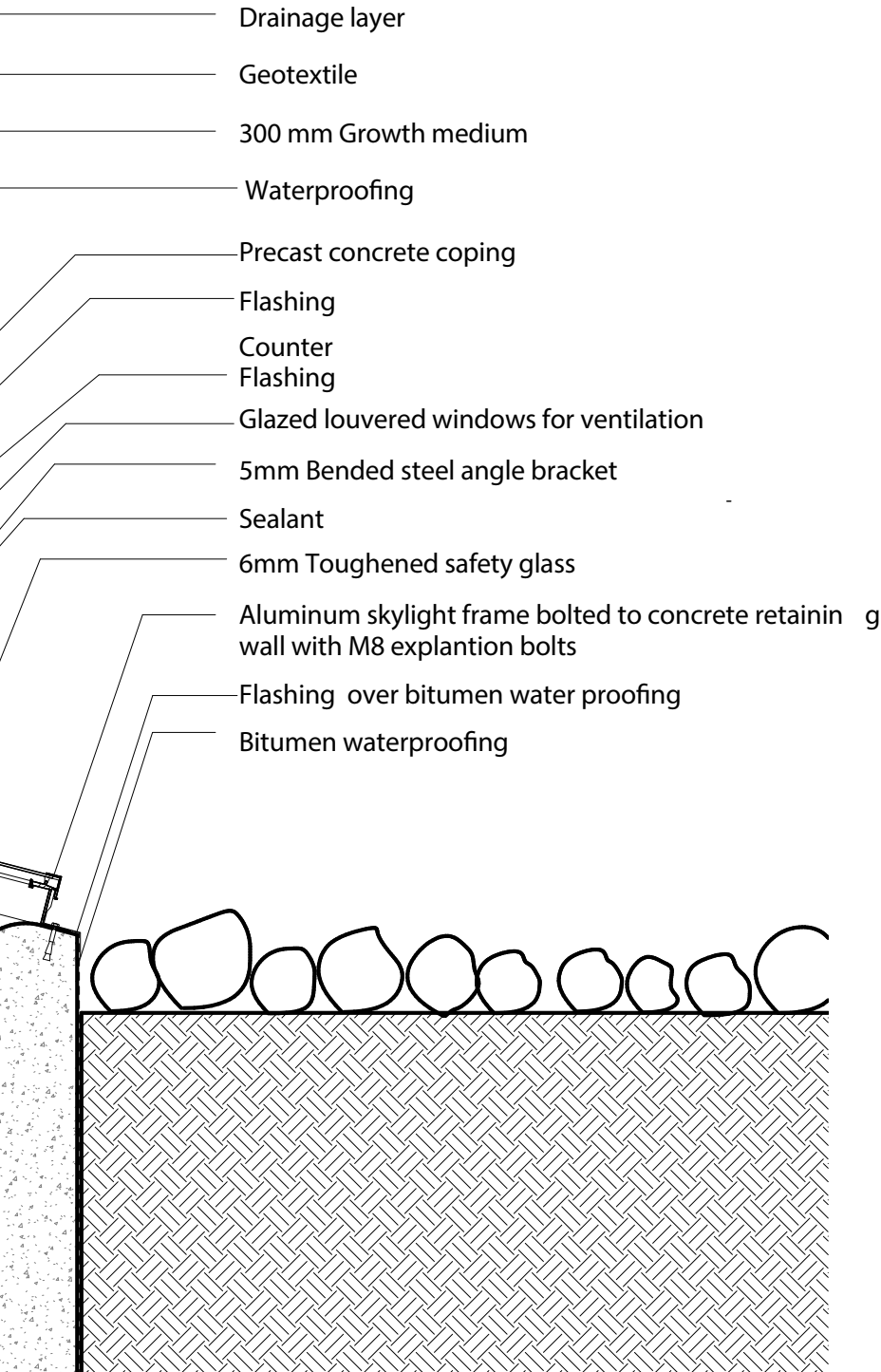




[3.11]
Section through
natural waste pro-
cessing
(Author, 2015)

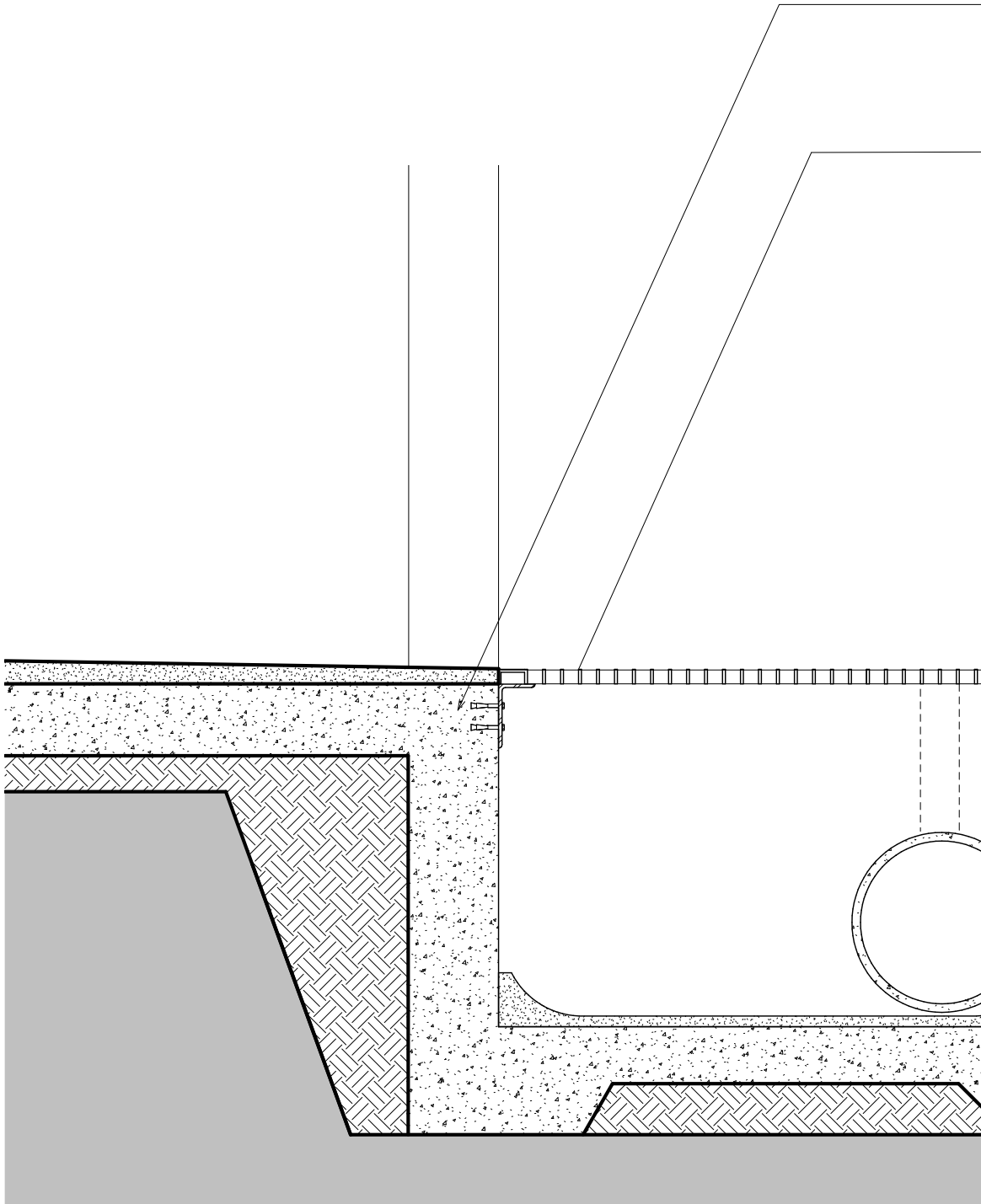






[3.12]
Detail A

(Author, 2015)



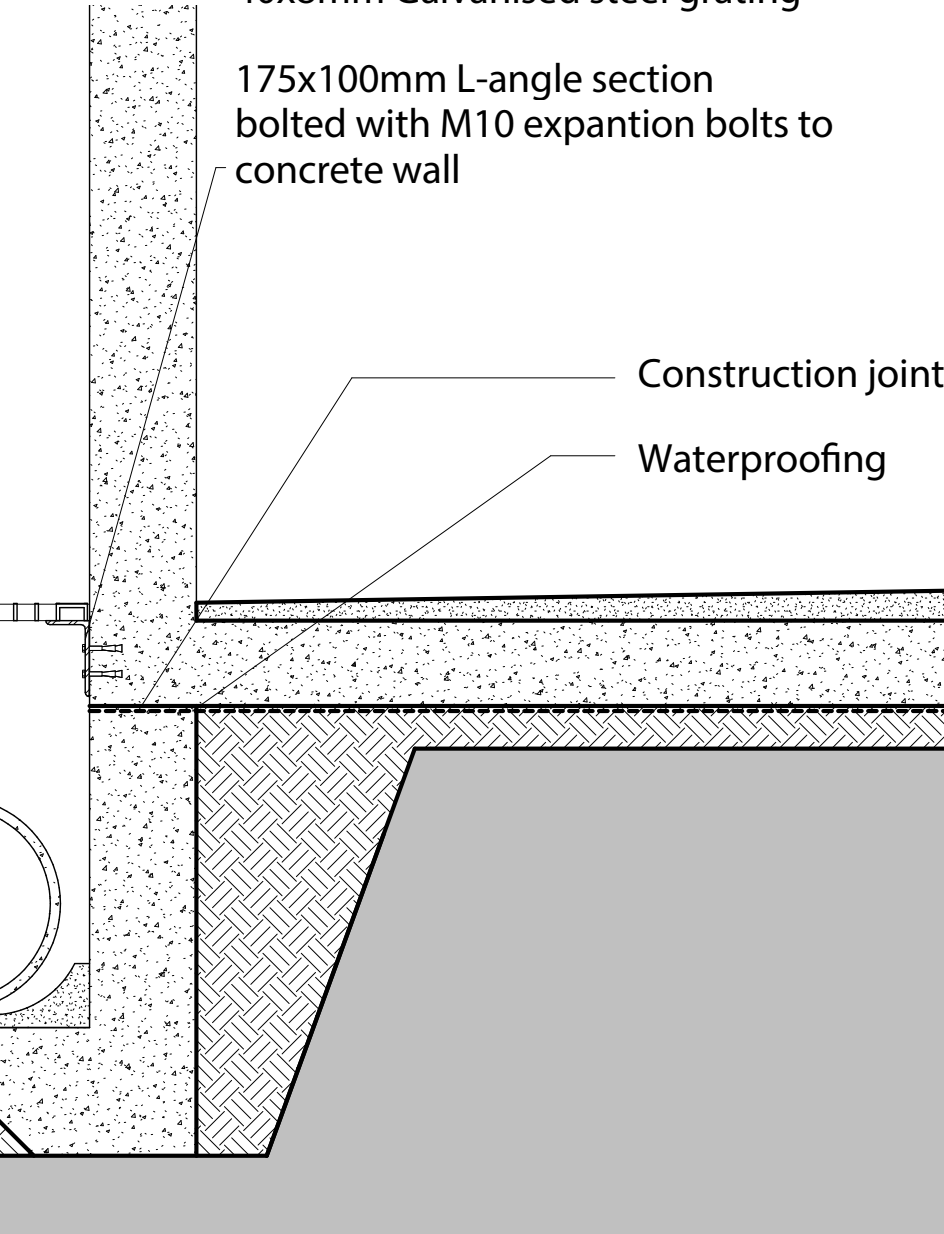
min. 40mm Dark grey screed with 50% portland cement and 50% fly ash, cement mixture to fall to sump pit

40x8mm Galvanised steel grating

175x100mm L-angle section bolted with M10 expansion bolts to concrete wall

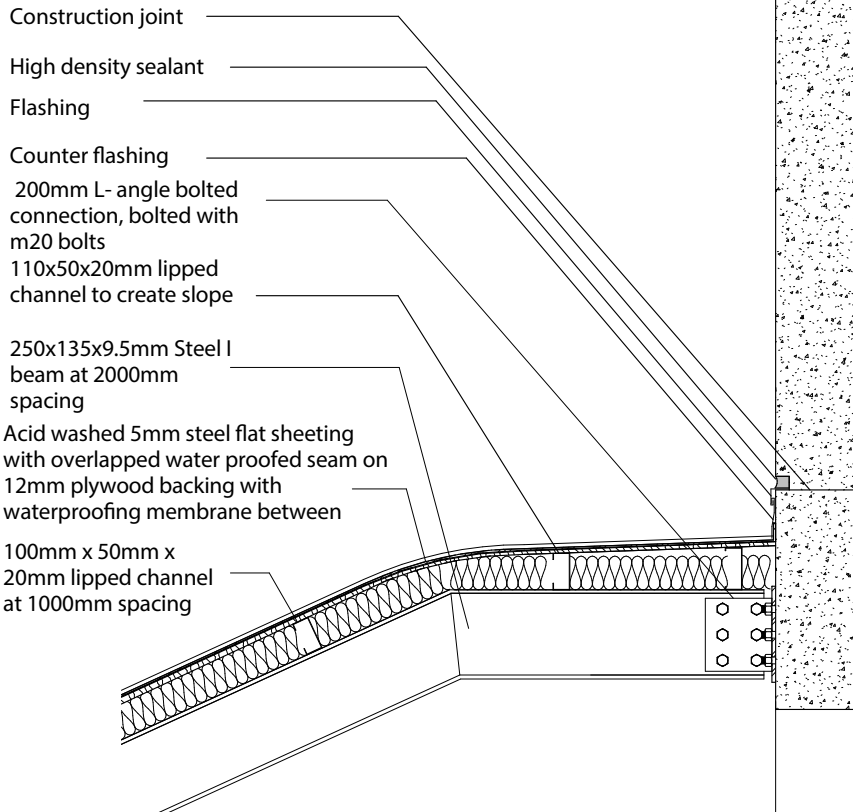
Construction joint

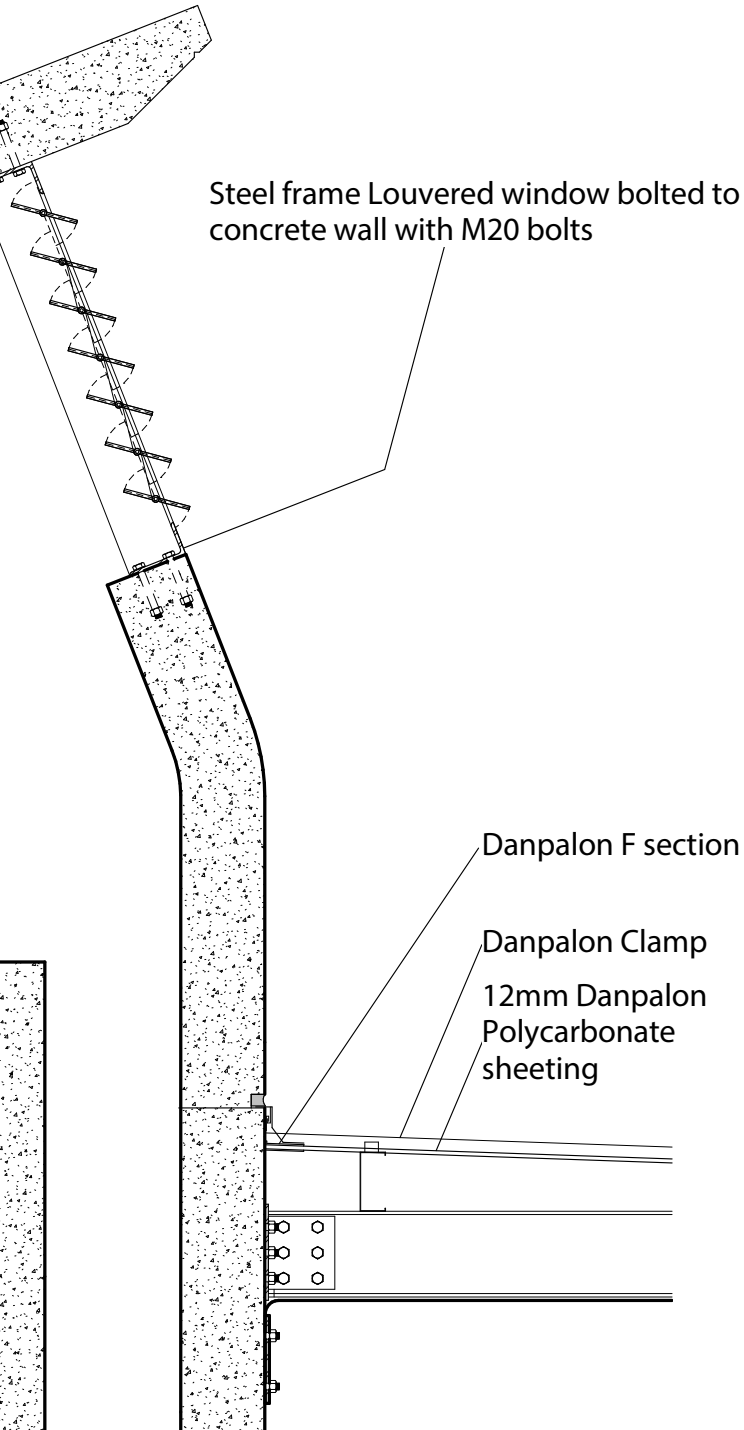
Waterproofing



[3.13]
Detail B

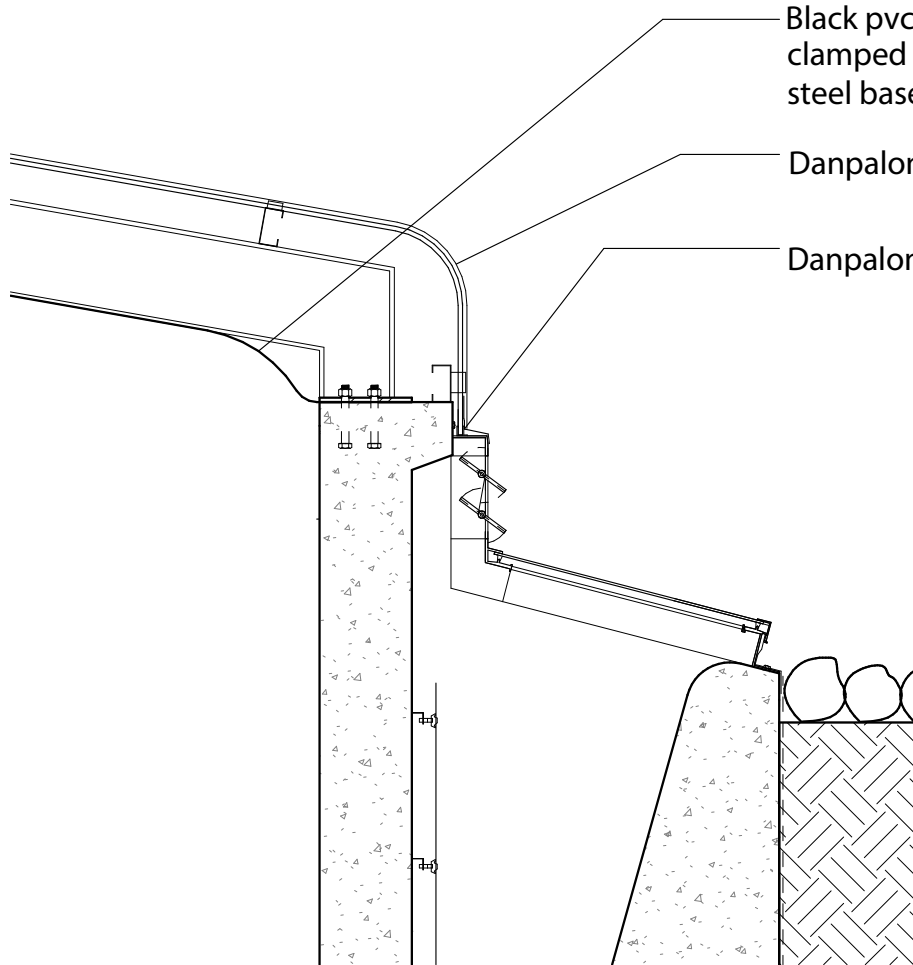
(Author, 2015)



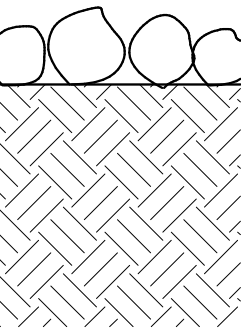


[3.14]
Detail C

(Author, 2015)

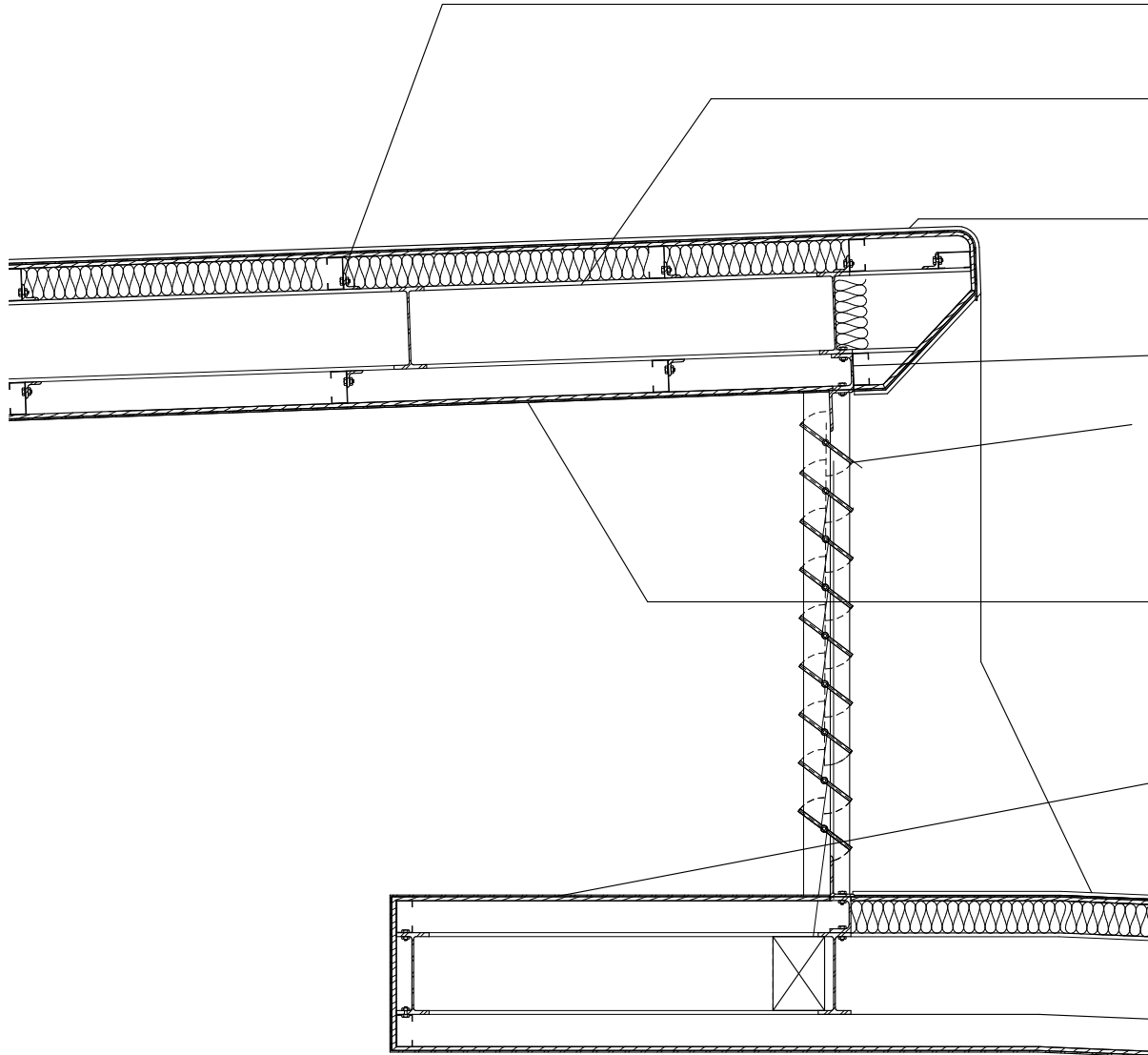


sheeting
under 12 mm
e plate
n Clamp
n F section



[3.15]
Detail D

(Author, 2015)



100x50x20mm lipped channel
at 1000mm spacing bolted to
50x50mm L angle

250x135x9.5mm Steel I
beam

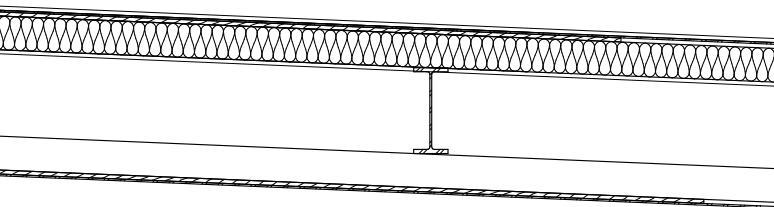
Acid washed 5mm steel flat sheeting
with overlapped water proofed seam
on 12mm plywood backing with
waterproofing membrane between

125 x 65mm Hot rolled Parallel
flange channel bolted to I beam

Mechanically operated glazed louvered
window

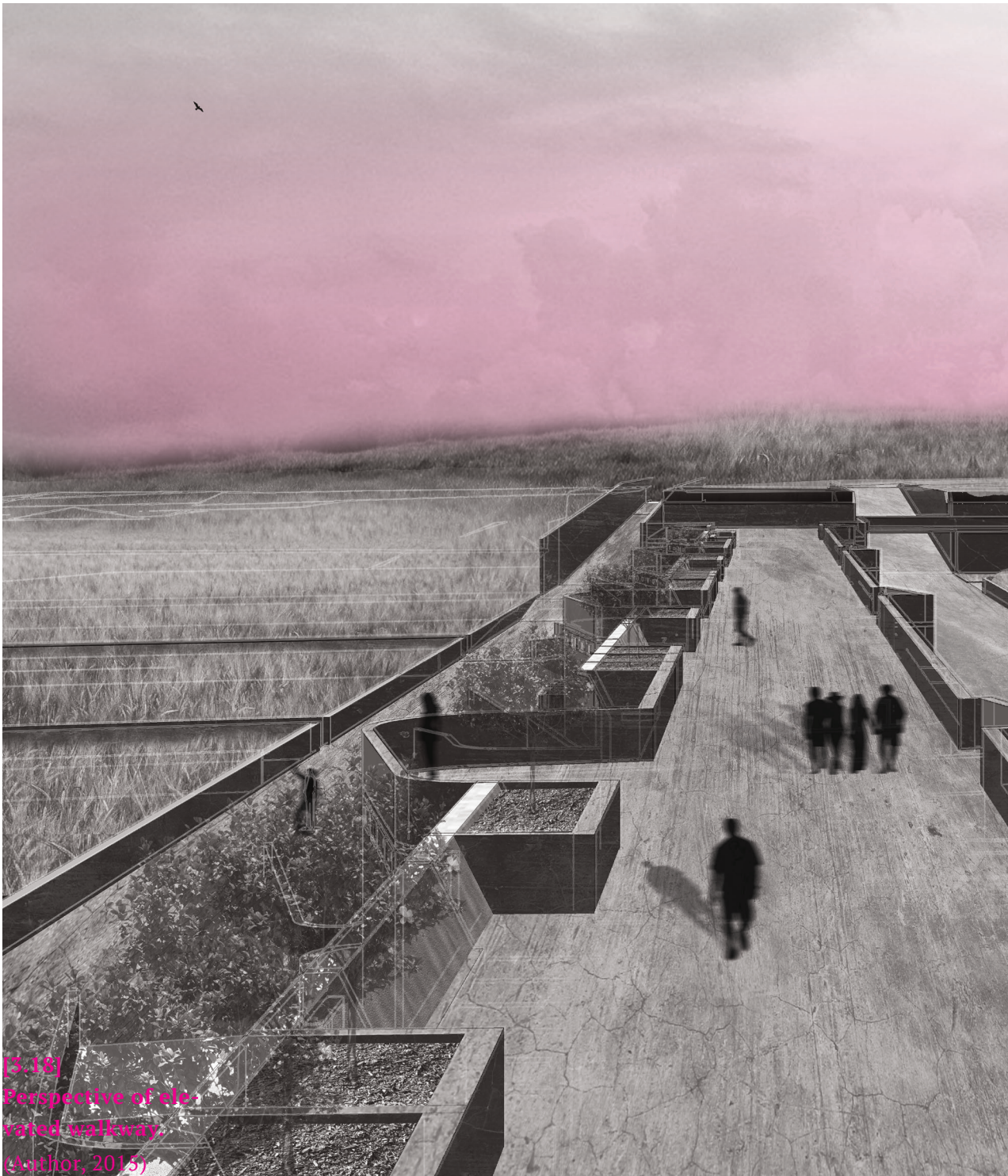
5mm Perforated steel sheeting
laminated to 12mm plywood
backing ceiling

5mm Flat steel sheeting on
12mm plywood backing light
shelf



[3.16]
Detail E

(Author, 2015)



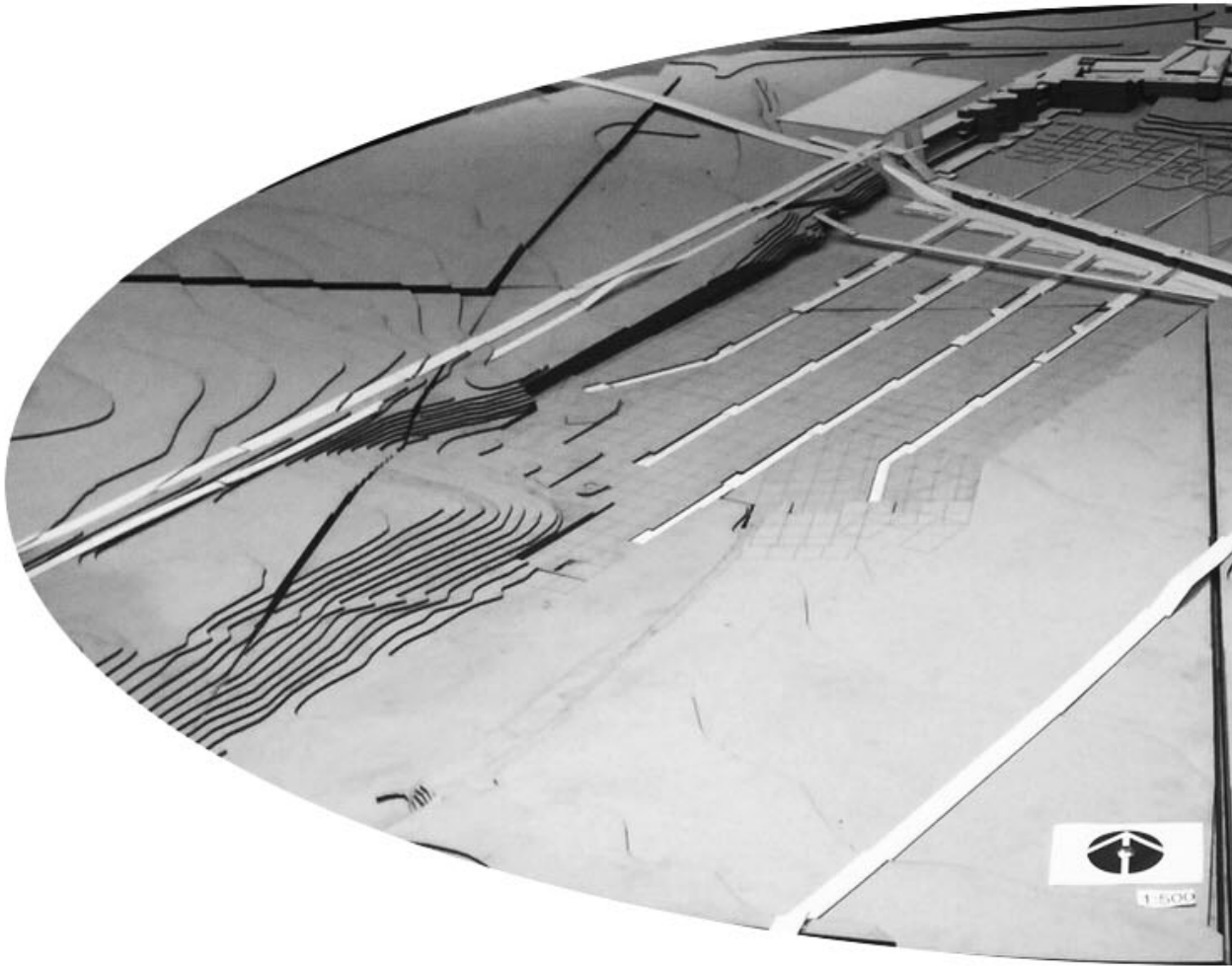
(3.18)
Perspective of elevated walkway.
(Author, 2015)



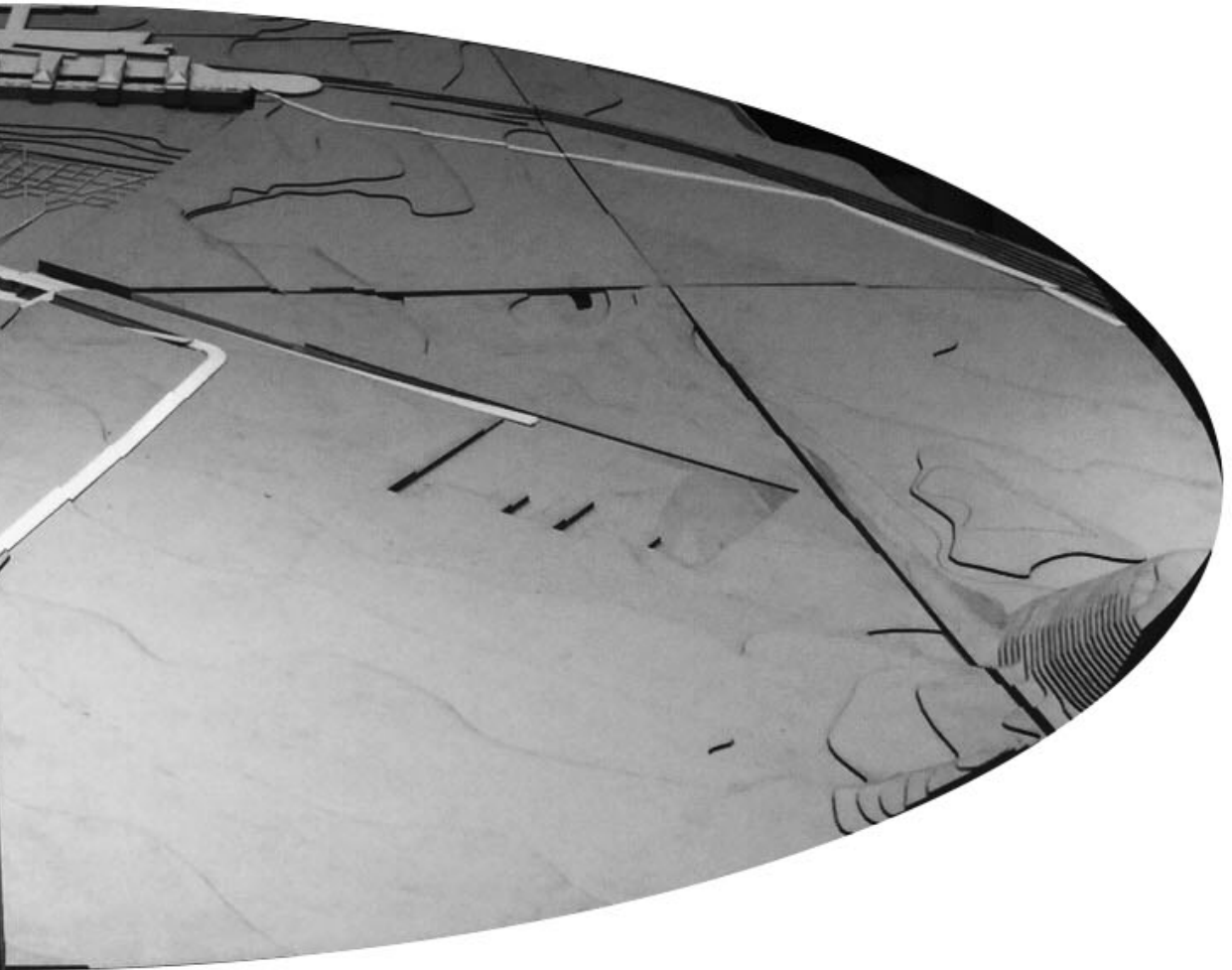


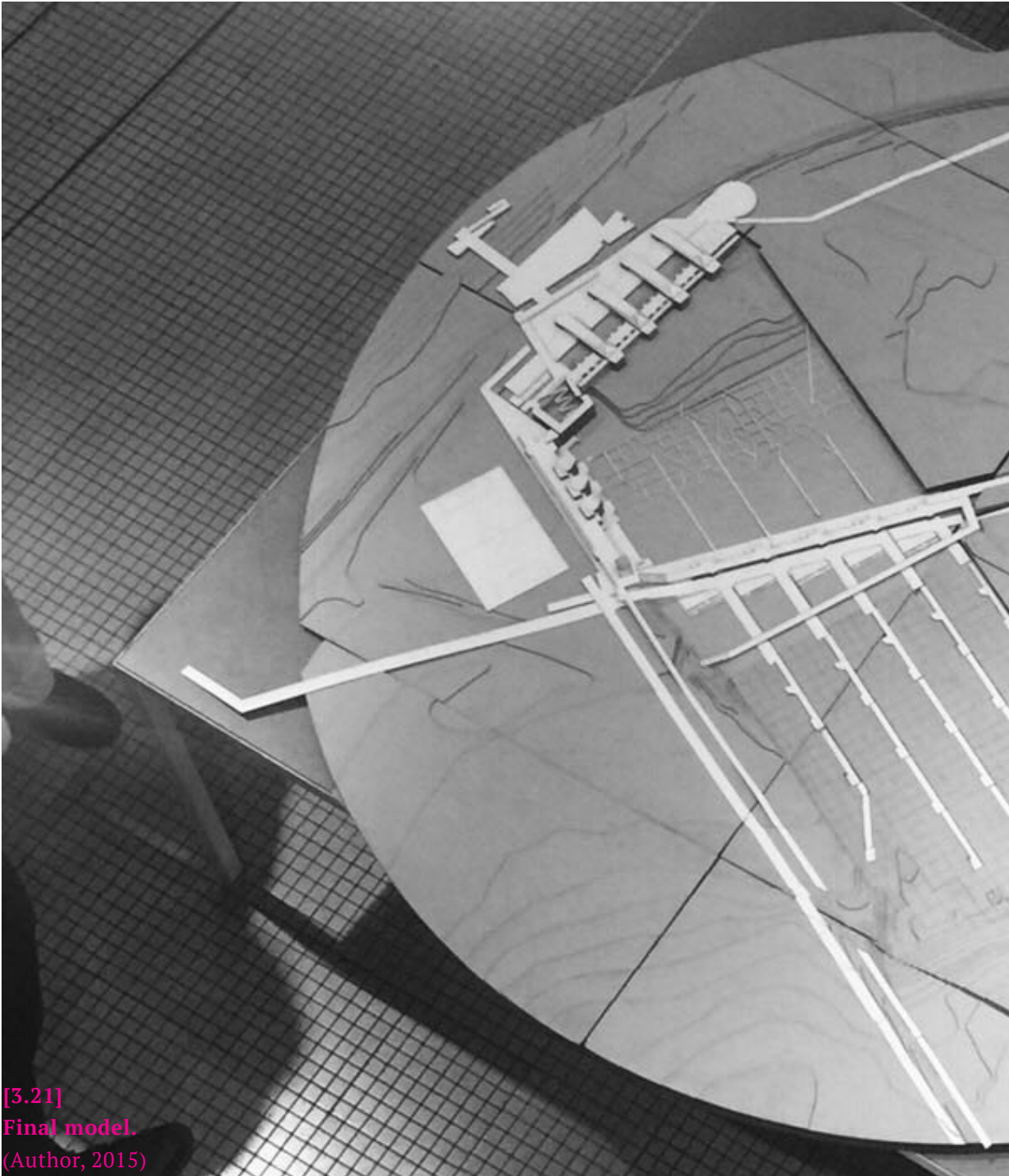
[3.19]
Perspective of Mar-
ket spaces.
(Author, 2015)





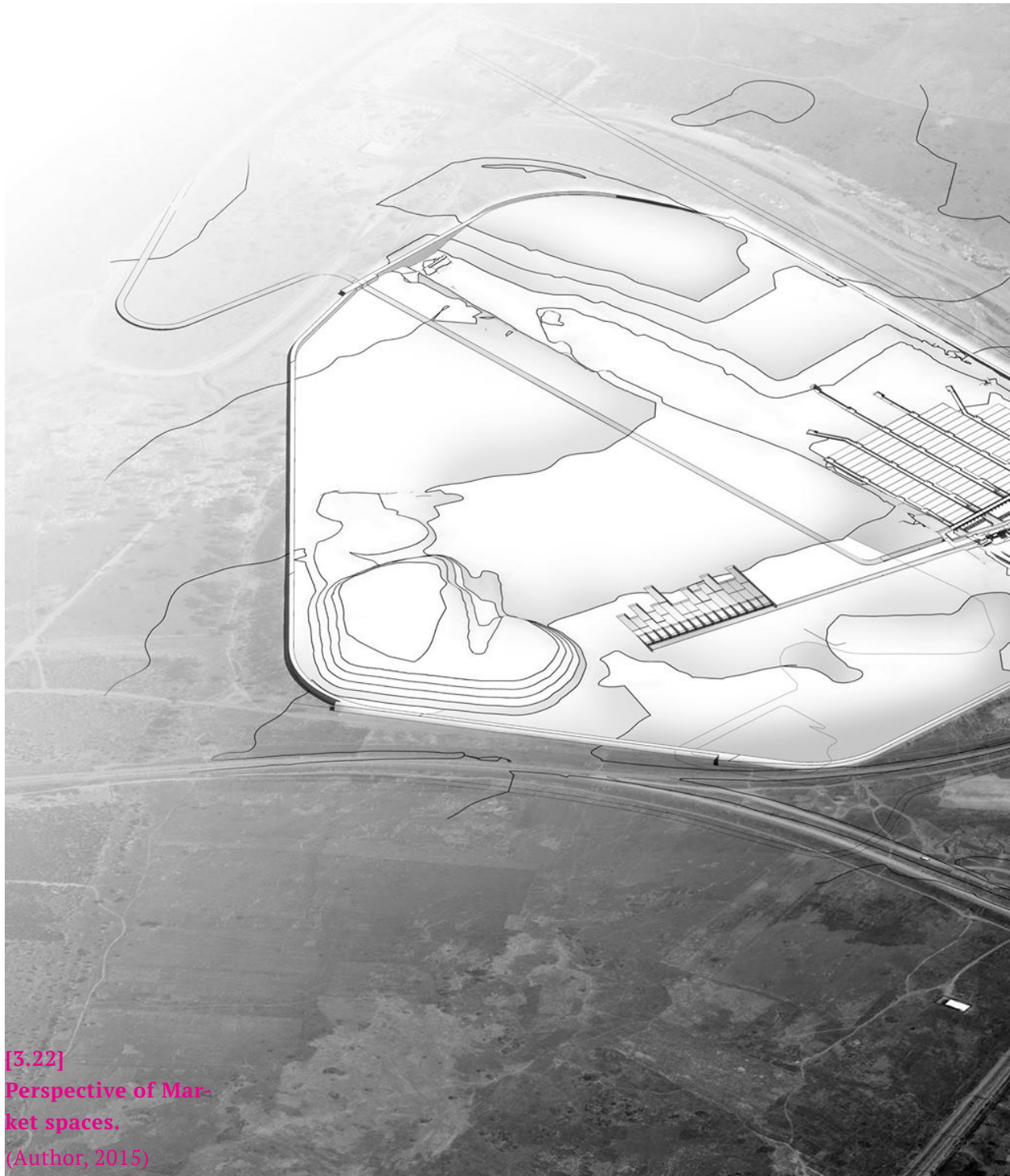
[3.20]
Final model.
(Author, 2015)





[3.21]
Final model.
(Author, 2015)





[3.22]
Perspective of Market spaces.
(Author, 2015)

Conclusion

Ultimately, contemporary waste management strategies are ineffective and need to be reconsidered. Landfill mining is financially viable and is a relevant program to be implemented on the landfill. Cultural opportunities of waste are mostly neglected and it is thus a necessary exploration in order to achieve the full potential of the land fill. The environmental benefits to landfill mining are great and create the possibility for Hatherley landfill to positively impact the environment. With growing pressure on resources and unprecedented environmental changes the world is experiencing, it is inevitable that landfill mining will have to be seriously considered in the near future.

References



Allan, A., 2012. *Mining the Midden*. University of Washington.

Al Jazeera, 2014. *Earthrise, Urban Mining*. [Online Video]. 01 December. Available at: <https://www.youtube.com/watch?v=i1aCu4yux0Q>. [Accessed October 4, 2015].

Andreotti, A., 2015. *Archaeology of Media*. Next Nature. Available at: <https://www.nextnature.net/2015/06/archaeology-of-media/> [Accessed October 4, 2015].

Anon, 1996. *An investigation of Late Iron Age Site on the Farm Hatherley 331JR, Pretoria District., Pretoria*.

Anon, 2008. *Development of a General Waste Minimization Plan for Gauteng*, Available at: [http://www.dnw.co.za/documents/GWMP Status Quo Report V3.pdf](http://www.dnw.co.za/documents/GWMP%20Status%20Quo%20Report%20V3.pdf). [Accessed October 4, 2015]

Armstrong, R., 2013. *Rachel Armstrong, Innovative Scientist Who Wants to Grow Architecture*. Interviewed by Alessia Andreotti, nextnature.net, 23 July. Available at: <https://www.nextnature.net/2013/07/interview-rachel-armstrong-innovative-scientist-who-wants-to-grow-architecture/> [Accessed October 4, 2015]

Balmori, D., 2014. *Drawing and Reinventing Landscape* 1st ed., West Sussex: Wiley.

Capra, F., 1996. *The web of life* 1st ed., New York: Doubleday.

Castle, H., 2013. *New Pastoralism*, p.2013.

Curulli, I., 2006. *Industrial Wastelands: Interpreting the Urban Heritage, History and Memory*, p.32–39.

Du Plessis, R., 2010. *Establishment of composting facilities on landfill*

sites. University of South Africa.

De Castro, S. & De Brito, J., 2013. Evaluation of the durability of concrete made with crushed glass aggregates. *Journal of Cleaner Production*, 41, pp.7–14. Available at: <http://dx.doi.org/10.1016/j.jclepro.2012.09.021>.

Department of Environmental Affairs, 2012. National Waste Information Baseline Report, Pretoria. Available at: <http://sawic.environment.gov.za/documents/1880.pdf>.

Portland Cement Association, 2015. Recycled Aggregates. Available at: <http://www.cement.org/for-concrete-books-learning/concrete-technology/concrete-design-production/recycled-aggregates> [Accessed October 20, 2015].

Field Operations, Lifescape: Fresh Kills Reserve Staten Island. Available at: <http://www.nyc.gov/html/dcp/pdf/fkl/fien1.pdf> [Accessed October 4, 2015].

Godby, M., 2015. Excavating Memory: Collage as a Strategy for the Recovery of History in the work of Cecil Skotnes, William Kentridge and Willie Bester. *Nka: Journal of contemporary African Art*, 43(6 - 7), p.38–43.

Holmes, R., 2010. A Glacier is a Very Long Event. *Mammoth*. Available at: <http://m.ammoth.us/blog/2010/02/a-glacier-is-a-very-long-event/> [Accessed October 4, 2015].

Jones, P.T. et al., 2013. Enhanced Landfill Mining in View of Multiple Resource Recovery: A critical review. *Journal of Cleaner Production*, 55, p.45–55. Available at: <http://dx.doi.org/10.1016/j.jclepro.2012.05.021>.

Kolbert, E., 2010. The Anthropocene Debate: Marking Humanity's Impact. *nextnature.net*. Available at: <https://www.nextnature.net/2010/06/the-anthropocene-debate-marking-humanity%E2%80%99s-impact/> [Accessed October 4, 2015].

Mathur / da Cunha + Tom Leader Studio, Narrative. Available at: <http://www.nyc.gov/html/dcp/pdf/fkl/lean1.pdf> [Accessed October 4, 2015].

Mostafavi, M. and Leatherbarrow, D. (1993). On weathering. Cambridge, Mass.: MIT Press.

Orton, J., 2009. Urban Agriculture. University of Pretoria.

Pendleton-Julian, A., 2009. Design Education And Innovation Ecosystems. Available at: https://fourplusone.files.wordpress.com/2010/03/apj_paper_14.pdf [Accessed October 4, 2015].

Philip, H., Todes, A. & Watson, V., 2008. Planning and Transformation: Learning from the Post-Apartheid Experience, New York: Routledge.

Plate, L. & Smelik, A., 2009. Technologies of Memory in the Arts 1st ed. L. Plate & A. Smelik, eds., New York: Palgrave Macmillan.

Samson, M., 2010. Organizing Reclaimers in Tshwane, South Africa. Lessons from Top Down and Bottom Up Experiences, Available at: http://wiego.org/sites/wiego.org/files/publications/files/Samson_WIEGO_OB5.pdf. [Accessed October 4, 2015]

Sanyal, S., 2014. Informal Recyclers: The Backbone of E-waste Management in South Africa: Part 1. Available at: <http://concernforewaste.blogspot.co.za/2014/11/informal-recyclers-backbone-of-e-waste.html> [Accessed October 4, 2015].

Shanks, M., Platt, D. & Rathje, W.L., 2004. The Perfume of Garbage: Modernity and the Archaeological. *Modernism/modernity*, 11(1), p.61–83.

Smith, A., 2012. Interviewed by John Humphries on Today, BBC Radio 4, 21 December.

Smout, M., Allen, L. & Spiller, N., 2007. *Augmented Landscapes*, New York: Princeton Architectural Press.

Snyman, J., 2009. A Zero Waste Model for the City of Tshwane Metropolitan Municipality. Available at: [http://libserv5.tut.ac.za:7780/pls/eres/wpg_docload.download_file?p_filename=F53129629/Snyman, J.pdf](http://libserv5.tut.ac.za:7780/pls/eres/wpg_docload.download_file?p_filename=F53129629/Snyman,J.pdf). [Accessed October 4, 2015]

Sterling, B., 2010. Next Nature Introduction. Available at: <https://www.nextnature.net/2010/09/next-nature-intro-by-bruce-sterling/> [Accessed October 4, 2015].

Tierb, M., 2009. *Spatial Recall: Memory in Architecture and Landscape*. M. Tierb, ed., New York: Routledge.

Van Mensvoort, K., 2011. Plastic Planet. Available at: <https://www.nextnature.net/2011/02/plastic-planet/> [Accessed October 4, 2015].

Van Mensvoort, K., 2014. The Anthropocene Explosion. nextnature.net. Available at: <https://www.nextnature.net/2014/09/the-anthropocene-explosion/> [Accessed October 4, 2015].

Vinnitskaya, I., 2013. Landfill Reclamation: Fresh Kills Park Develops as a Natural Coastal Buffer and Parkland for Staten Island. Archdaily.com.

VPUU, (2014). VPUU. [online] Available at: <http://www.vpuu.org.za/page.php?page=2> [Accessed 8 Dec. 2015].

Zalasiewicz, J. et al., 2010. The New World of the Anthropocene. *Environmental Science and Technology*, 44(7), p.2228–2231.

List of figures



Figure 1.1

Collage. (Author, 2015)

Figure 1.2

Obsolete technology as art. Andreotti, A., 2015. (edited by author, 2015) [Image online] Available at: <https://www.nextnature.net/2015/06/archaeology-of-media> [Accessed October 4, 2015]

Figure 1.3

Obsolete technology in landfills. Van Mensvoort, K., 2009. (edited by author, 2015) [Image online] Available at: <https://www.nextnature.net/2009/03/hightech-landscape/> [Accessed October 4, 2015]

Figure 1.4

Industrial revolution. Fitzgerald, R., n.d. (edited by author, 2015) [Image online] Available at: <https://sites.google.com/a/online.sd71.bc.ca/human-rights-morgan-rachel-rylee/the-industrial-revolution> [Accessed October 4, 2015]

Figure 1.5

Atomic cloud after Nagasaki atomic bombing. Atomic archive, 1945. (edited by author, 2015) [Image online] Available at: <http://www.atomicarchive.com/Photos/Nagasaki/image1.shtml> [Accessed October 4, 2015]

Figure 1.6

The great pacific garbage patch. Guerrisi, S., 2012. (edited by author, 2015) [Image online] Available at: <https://www.flickr.com/photos/sjguerrisiportfolio/8687410631/> [Accessed October 4, 2015]

Figure 1.7

Urbanization as a result of the great acceleration. Author unknown, 2008. (edited by author, 2015) [Image online] Available at: <http://www.goodplanet.info/en/encyclopedia/2008/07/17/urbanisation/> [Accessed October 4, 2015]

Figure 1.8

Flusslandschaft mit einem Dorf und Wandern. Van Bredael, J.P., 1735. [Image online] Available at: https://commons.wikimedia.org/wiki/Category:18th-century_landscape_paintings#/media/File:Jan_Peeter_van_Bredael_II_Flusslandschaft_mit_Dorf.jpg [Accessed October 4, 2015]

Figure 1.9

Invention of Africa 1. Kentridge, W., 2012. [Image online] Available at: <http://www.goodman-gallery.com/exhibitions/307> [Accessed October 4, 2015]

Figure 1.10

Drawing for the film Other Faces. Kentridge, W., 2011. [Image online] Available at: <http://www.thenation.com/article/my-johannes->

burg/ [Accessed October 4, 2015]

Figure 1.11

Stills from the animation *Felix in Exile*.

Kentridge, W., 1994. [Image online] Available at: <https://www.youtube.com/watch?v=VaTn-choukdY> [Accessed October 4, 2015]

Figure 1.12

The Gunner Makes the Land – The White Monday Disaster series. Skotnes, C., 1975.

[Image online] Available at: <http://stellenboschartgallery.com/tag/skotnes-cecil/> [Accessed October 4, 2015]

Figure 1.13

His Second Brave Pair – The White Monday Disaster series. Skotnes, C., 1975. [Image online] Available at: <http://stellenboschartgallery.com/tag/skotnes-cecil/> [Accessed October 4, 2015]

Figure 1.14

MVRDV Gwanggyo Power Center. Mixed use 77,000 inhabitants development near Seoul. Enhuber, R., 2011. [Image online] Available at: <http://architecture.mapolismagazin.com/mvrdv-gwanggyo-power-center-seoul-korea> [Accessed October 4, 2015]

Figure 1.15

MVRDV Gwanggyo Power Center. Mixed use 77,000 inhabitants development near Seoul. Enhuber, R., 2011. [Image online] Available at: <http://architecture.mapolismagazin.com/mvrdv-gwanggyo-power-center-seoul-korea> [Accessed October 4, 2015]

Figure 1.16

The highline. Field Operations. One of the few built examples of landscape urbanism.

Unknown Author, 2009. [Image online] Available at: <http://scenariojournal.com/strategy/the-high-line-section-1/> [Accessed October 4, 2015]

Figure 1.17

The highline. Field Operations. One of the few built examples of landscape urbanism.

Unknown Author, 2009. [Image online] Available at: <http://scenariojournal.com/strategy/the-high-line-section-1/> [Accessed October 4, 2015]

Figure 1.18

Orestad development. Largely considered a failure. Olsson, L., Loerakker, J., 2013. [Image online] Available at: <http://www.failedarchitecture.com/the-story-behind-the-failure-copenhagens-business-district-orestad/> [Accessed October 4, 2015]

Figure 1.19

Two plots developed by BIG Architects. Olsson, L., Loerakker, J., 2013. [Image online] Available at: <http://www.failedarchitecture.com/the-story-behind-the-failure-copenhagens-business-district-orestad/> [Accessed October 4, 2015]

Figure 1.20

Conceptual image of how nature and culture have merged. Cormier, B., 2013. [Image online] Available at: <https://www.nextnature.net/2013/04/nature-through-the-windshield/>

[Accessed October 4, 2015]

2015]

Figure 1.21

Cultural imagery mimicking nature has become more recognisable than its natural counterparts. . Van Mensvoort, K., 2009. [Image online] Available at: <http://www.karlgran-din.com/the-next-nature-book/> [Accessed October 4, 2015]

Figure 1.22

Museum of Egyptian Culture: Conceptual image of sunken chambers. Smout, M., Allen, L., 2002. [Image online] Available at: <http://discovery.ucl.ac.uk/10153/1/10153.pdf> [Accessed October 4, 2015]

Figure 1.23

Museum of Egyptian Culture: Diagrammatic arrangement of structures. Smout, M., Allen, L., 2002. [Image online] Available at: <http://discovery.ucl.ac.uk/10153/1/10153.pdf> [Accessed October 4, 2015]

Figure 1.24

Museum of Egyptian Culture: The environmental performance of the landscape. Smout, M., Allen, L., 2002. [Image online] Available at: <http://discovery.ucl.ac.uk/10153/1/10153.pdf> [Accessed October 4, 2015]

Figure 1.25

Museum of Egyptian Culture: Section showing the architecture cutting into the deep surface. Smout, M., Allen, L., 2002. [Image online] Available at: <http://discovery.ucl.ac.uk/10153/1/10153.pdf> [Accessed October 4,

Figure 1.26

Museum of Egyptian Culture: Plan. Smout, M., Allen, L., 2002. [Image online] Available at: <http://discovery.ucl.ac.uk/10153/1/10153.pdf> [Accessed October 4, 2015]

Figure 1.27

Examples of obsolete data storage devices. Lost Formats Preservation Society, 2000. [Image online] Available at: <http://www.experimentaljetset.nl/archive/lostformats> [Accessed October 4, 2015]

Figure 1.28

Cell phone used outside World Trade Center. National Museum of American History, Smithsonian Institution, 2002. [Image online] Available at: <http://amhistory.si.edu/september11/collection/record.asp?ID=48> [Accessed October 20, 2015]

Figure 1.29

Purse and Wallet. National Museum of American History, Smithsonian Institution, 2002. [Image online] Available at: <http://amhistory.si.edu/september11/collection/record.asp?ID=48> [Accessed October 20, 2015]

Figure 1.30

Future Relic 1: Mobile phone. Arsham, D., 2013. [Image online] Available at: <http://www.highsnobiety.com/2013/12/02/daniel-arsham-future-relic-no-1/#slide-5> [Accessed October 20, 2015]

Figure 1.31

Future Relic 2: Camera. Arsham, D., 2014. [Image online] Available at: <http://hypebeast.com/2014/11/perspective-by-chris-stamp-inside-the-mind-of-daniel-arsham-and-his-future-relic-02> [Accessed October 20, 2015]

Figure 1.32

Future Relic 3: Clock. Arsham, D., 2014. [Image online] Available at: <http://future-relic.com/> [Accessed October 20, 2015]

Figure 1.33

Daniel Arsham. (2013). Future Relic 1. [Video still], 16 December. Available at: <https://www.youtube.com/watch?v=TwAucixwLxc> [Accessed October 20, 2015]

Figure 1.34

Daniel Arsham. (2014). Future Relic 2. [Video still], 19 October. Available at: <https://www.youtube.com/watch?v=9n5skSBuFtI> [Accessed October 20, 2015]

Figure 1.35

Daniel Arsham. (2015). Future Relic 3. [Video still], 28 April. Available at: <https://www.youtube.com/watch?v=jWvnC0mGOGk> [Accessed October 20, 2015]

Figure 1.36

Fresh Kills Park site plan. James Corner Field Operations, 2001. [Image online] Available at: <https://katarinamilos.files.wordpress.com/2014/03/fresh-kills-park-07.jpg> [Accessed October 20, 2015]

Figure 1.37

Fresh Kills Park. James Corner Field Operations, 2001. [Image online] Available at: http://www.fieldoperations.net/fileadmin/fo_uploads/projects/08_FreshkillsPark/aa-phase-mound_no-windmills-_2_.jpg [Accessed October 20, 2015]

Figure 1.38

Fresh Kills Park development strategy. James Corner Field Operations, 2001. [Image online] Available at: <https://katarinamilos.files.wordpress.com/2014/03/fresh-kills-park-07.jpg> [Accessed October 20, 2015]

Figure 1.39.1

Fresh Kills Park: Experimental strategies developed for the diverse material depositions. Marthur, Da Cunha & Tom Leader Studio, 2001. [Image online] Available at: http://places.designobserver.com/media/slideshows/Slide-11_1.jpg [Accessed October 20, 2015]

Figure 1.39.2

Fresh Kills Park: Experimental strategies developed for the diverse material depositions. Marthur, Da Cunha & Tom Leader Studio, 2001. [Image online] Available at: http://places.designobserver.com/media/slideshows/Slide-11_2.jpg [Accessed October 20, 2015]

Figure 1.39.3

Fresh Kills Park: Experimental strategies developed for the diverse material depositions. Marthur, Da Cunha & Tom Leader Studio, 2001. [Image online] Available at: http://places.designobserver.com/media/slideshows/Slide-11_3.jpg [Accessed October 20, 2015]

Figure 1.39.4

Fresh Kills Park: Experimental strategies developed for the diverse material depositions. Marthur, Da Cunha & Tom Leader Studio, 2001. [Image online] Available at: http://places.designobserver.com/media/slideshows/Slide-11_4.jpg [Accessed October 20, 2015]

Figure 1.39.5

Fresh Kills Park: Experimental strategies developed for the diverse material depositions. Marthur, Da Cunha & Tom Leader Studio, 2001. [Image online] Available at: http://places.designobserver.com/media/slideshows/Slide-11_5.jpg [Accessed October 20, 2015]

Figure 1.40

Fresh Kills Park: Landscape strategies represented as layers. Tom Leader Studio, 2001. [Image online] Available at: http://www.tomleader.com/studio/projects/project_details.php?id_cat=5&id_proj=31 [Accessed October 20, 2015]

Figure 1.41

Study area. (Author, 2015)

Figure 1.42

Hatherley landfill location. (Author, 2015)

Figure 1.43

Sammy Marks. Venter, P., 2007. [Image online] Available at: https://en.wikipedia.org/wiki/Sammy_Marks#/media/File:Sammy-Marks01.jpg [Accessed October 25, 2015]

Figure 1.44

Alois Hugo Nellmapius. Venter, P., 2007. [Image online] Available at: https://en.wikipedia.org/wiki/Alois_Hugo_Nellmapius#/media/File:Alois_Hugo_Nellmapius00.jpg [Accessed October 25, 2015]

Figure 1.45

Eerste Fabrieken, Hatherley, Pretoria. SA Coin, n.d. [Image online] Available at: http://www.sacoin.co.za/coin_topic8.html [Accessed October 25, 2015]

Figure 1.46

Apartheid control. Township Transformation Timeline Poster, Department of Co-operative Governance and Traditional Affairs, 2009.

Figure 1.47

Segregation consolidated. Township Transformation Timeline Poster, Department of Co-operative Governance and Traditional Affairs, 2009.

Figure 1.48

Apartheid dismantling. Township Transformation Timeline Poster, Department of Co-operative Governance and Traditional Affairs, 2009.

Figure 1.49

Changing landscape over time. (Author, 2015)

Figure 1.50

First democratic elections 1994. Township Transformation Timeline Poster, Department of Co-operative Governance and Traditional Affairs, 2009.

Figure 1.51

Sketch of Bagariesi. (Author, 2015)

Figure 1.52

Context mapping. (Author, 2015)

Figure 1.53

Greenview station. Photo courtesy of Randall, N., 2015.

Figure 1.54

Meso mapping. (Author, 2015)

Figure 1.55

Greenview station and train service road. (Author, 2015)

Figure 1.56

Bermed edge of landfill in relation to Phomolong. (Author, 2015)

Figure 1.57

Meso mapping. (Author, 2015)

Figure 1.58

Photo collage of area relocated for Greenview station construction. (Author, 2015)

Figure 1.59

Main route leading to Greenview station. (Author, 2015)

Figure 1.60

Landfill location. (Author, 2015)

Figure 1.61

Landfill panorama. (Author, 2015)

Figure 1.62

View from landfill edge into landfill. (Author, 2015)

Figure 1.63

Northern edge of landfill. (Author, 2015)

Figure 1.64

Daily activities on landfill. (Author, 2015)

Figure 1.65

Section through landfill capped heaps. (Author, 2015)

Figure 1.66

Section through active dumping area on landfill. (Author, 2015)

Figure 1.67

Landfill activity. (Author, 2015)

Figure 1.68

Landfill mapping. (Author, 2015)

Figure 1.69

Photo of physical model showing historic topography. (Author, 2015)

Figure 1.70

Photo of physical model showing current topography. (Author, 2015)

Figure 1.71

Mamelodi, Phomolong and Hatherley landfill datasheet. (Author, 2015)

Figure 1.72

Conceptual exploration. (Author, 2015)

Figure 1.73

Program diagram. (Author, 2015)

Figure 2.1

Ecotone geometries overlapping. (Author, 2015)

Figure 2.2

Ecotones overlapping at landfill. (Author, 2015)

Figure 2.3

VPUU lens. (Author, 2015)

Figure 2.4

Programmatic ecotones. (Author, 2015)

Figure 2.5

Urban vision proposal. (Author, 2015)

Figure 2.6

Urban vision proposal. (Author, 2015)

Figure 2.7

Typological study exploring possible development along spines.

1 story living unit developing into two story units with workshop/ commercial spaces below and living quarters above. (Author, 2015)

Figure 2.8

Final urban vision. (Author, 2015)

Figure 2.9

Small proposed public square. (Author, 2015)

Figure 2.10

Final urban vision. (Author, 2015)

Figure 2.11

Urban intension. (Author, 2015)

Figure 2.12

Conceptual intension. (Author, 2015)

Figure 2.13

Archeological archive exterior paving.

Baan, I., 2009. [Image online] Available at:

[http://coolboom.net/en/wp-content/up-](http://coolboom.net/en/wp-content/uploads/2008/01/archeological-archives3-2.jpg)

[loads/2008/01/archeological-archives3-2.jpg](http://coolboom.net/en/wp-content/uploads/2008/01/archeological-archives3-2.jpg)

[Accessed October 26, 2015]

Figure 2.14

Archeological archive exterior hexagonal

profile. Baan, I., 2009. [Image online] Avail-

able at: [http://coolboom.net/en/wp-content/](http://coolboom.net/en/wp-content/uploads/2008/01/archeological-archives1.jpg)

[uploads/2008/01/archeological-archives1.jpg](http://coolboom.net/en/wp-content/uploads/2008/01/archeological-archives1.jpg)

[Accessed October 26, 2015]

Figure 2.15

Archeological archive exterior showing sunk-

en space. Baan, I., 2009. [Image online] Avail-

able at: [http://coolboom.net/en/wp-content/](http://coolboom.net/en/wp-content/uploads/2008/01/archeological-archives4.jpg)

[uploads/2008/01/archeological-archives4.jpg](http://coolboom.net/en/wp-content/uploads/2008/01/archeological-archives4.jpg)

[Accessed October 26, 2015]

Figure 2.16

Archeological archive interior. Pasternack, A.,

2008. [Image online] Available at: [http://art-](http://artforum.com.cn/uploads/upload.000/id00336/article05.jpg)

[forum.com.cn/uploads/upload.000/id00336/](http://artforum.com.cn/uploads/upload.000/id00336/article05.jpg)

[article05.jpg](http://artforum.com.cn/uploads/upload.000/id00336/article05.jpg) [Accessed October 26, 2015]

Figure 2.17

Torre cube plan. Estudio Carme Pinos, 2006. [Image online] Available at: http://www.noticiasarquitectura.info/especiales/torre_cube.htm [Accessed October 26, 2015]

Figure 2.18

Exterior of Torre cube. Estudio Carme Pinos, 2006. [Image online] Available at: http://www.noticiasarquitectura.info/especiales/torre_cube.htm [Accessed October 26, 2015]

Figure 2.19

Torre cube sections. Estudio Carme Pinos, 2006. [Image online] Available at: http://www.noticiasarquitectura.info/especiales/torre_cube.htm [Accessed October 26, 2015]

Figure 2.20

Torre cube central space. Estudio Carme Pinos, 2006. [Image online] Available at: http://www.noticiasarquitectura.info/especiales/torre_cube.htm [Accessed October 26, 2015]

Figure 2.21

Conceptual intention explored through model. (Author, 2015)

Figure 2.22

Conceptual intention explored through model. (Author, 2015)

Figure 2.23

Conceptual spatial exploration. (Author, 2015)

Figure 2.24

Conceptual spatial exploration. (Author, 2015)

Figure 2.25

Master plan development. (Author, 2015)

Figure 2.26

Spatial exploration of program. (Author, 2015)

Figure 2.27

Iteration 1 plan. (Author, 2015)

Figure 2.28

Iteration 2 plan. (Author, 2015)

Figure 2.29

Site plan. (Author, 2015)

Figure 2.30

Basement plan. (Author, 2015)

Figure 2.31

Level 1 plan. (Author, 2015)

Figure 2.32

Level 2 plan (Author, 2015)

Figure 2.33

Landfill access (Author, 2015)

Figure 2.34

Mining spines (Author, 2015)

Figure 2.35

Mining spines (Author, 2015)

Figure 2.36
Waste movement (Author, 2015)

Materials available on site. (Author, 2015)

Figure 2.37
Public programs (Author, 2015)

Figure 2.43.4
Materials available on site. (Author, 2015)

Figure 2.38
Conceptual approach (Author, 2015)

Figure 2.43.5
Materials available on site. (Author, 2015)

Figure 2.39
Colour of concrete depending on cement mixture

Figure 2.43.6
Materials available on site. (Author, 2015)

Figure 2.40
Embodied energy of different cement mixtures (Author, spreadsheet provided by The Concrete Institute, 2015)

Figure 2.44
Ningbo museum exterior. Amateur Architecture, 2013. [Image online] Available at: <https://cfileonline.org/architecture-wang-shus-ningbo-museum/> [Accessed October 26, 2015]

Figure 2.41
Embodied energy of recycled aggregates vs natural aggregates. (Author, spreadsheet provided by The Concrete Institute, 2015)

Figure 2.45
Ningbo museum facade. Amateur Architecture, 2013. [Image online] Available at: <https://cfileonline.org/architecture-wang-shus-ningbo-museum/> [Accessed October 26, 2015]

Figure 2.42
Exposed recycled aggregates in concrete. Zimmerman, R., 2011. [Image online] Available at: <http://www.examiner.com/article/sustainability-80-recycled-glass-concrete> [Accessed October 26, 2015]

Figure 2.46
Detail of Ningbo museum facade. Amateur Architecture, 2013. [Image online] Available at: <https://cfileonline.org/architecture-wang-shus-ningbo-museum/> [Accessed October 26, 2015]

Figure 2.43.1
Materials available on site. (Author, 2015)

Figure 2.47
Ningbo museum sections. Wang, S., Lu, W., 2007. [Image online] Available at: <http://sbd2050.org/project/ningbo-history-museum-23/> [Accessed October 26, 2015]

Figure 2.43.2
Materials available on site. (Author, 2015)

Figure 2.43.3

Figure 2.48

Ningbo museum elevations. Wang, S., Lu, W., 2007. [Image online] Available at: <http://sbd2050.org/project/ningbo-history-museum-23/> [Accessed October 26, 2015]

Figure 2.49

Acid washed steel. Bergera, I., 2011. [Image online] Available at: <http://www.archdaily.com/168519/house-in-cadiz-alfonso-alzugaray-carlos-urzainqui> [Accessed October 26, 2015]

Figure 2.50

Acid washed steel. Garzaniti, M., 2005. [Image online] Available at: <http://www.fab-arch.be/nl/belgische-prijs/projecten/32-sociale-apartementen-met-commerciele-ruimte> [Accessed October 26, 2015]

Figure 2.51

Stained concrete. Grunge Textures, 2008. [Image online] Available at: http://img07.deviantart.net/9ddb/i/2008/303/4/0/rust_stained_concrete_by_grungetextures.jpg [Accessed October 26, 2015]

Figure 2.52.1

Panicum Maximum. Starr, K., 2006. [Image online] Available at: https://upload.wikimedia.org/wikipedia/commons/9/9e/Starr_060416-7663_Panicum_maximum.jpg [Accessed October 26, 2015]

Figure 2.52.2

Cynodon Dactylon. Bidgee, 2010. [Image online] Available at: https://upload.wikimedia.org/wikipedia/commons/6/62/Cynodon_dactylon_2.jpg [Accessed October 26, 2015]

[org/wikipedia/commons/6/62/Cynodon_dactylon_2.jpg](https://upload.wikimedia.org/wikipedia/commons/6/62/Cynodon_dactylon_2.jpg) [Accessed October 26, 2015]

Figure 2.52.3

Digitaria Eriantha. *Digitaria Eriantha*, 2015. [Image online] Available at: http://wildflowernursery.co.za/wp-content/uploads/2015/07/Digitaria_eriantha_Elandsdrift_500X500.jpg [Accessed October 26, 2015]

Figure 2.52.4

Chloris Gayana. LeafCo, 2015. [Image online] Available at: [http://www.leafco.co.za/media/photos/Chloris_gayana_03\(Product%20detail\).jpg](http://www.leafco.co.za/media/photos/Chloris_gayana_03(Product%20detail).jpg) [Accessed October 26, 2015]

Figure 2.52.5

Eragrostis Curvula. Royal Horticultural Society, 2002. [Image online] Available at: https://apps.rhs.org.uk/plantselectorimages/detail/WSY0035462_4067.jpg [Accessed October 26, 2015]

Figure 2.52.6

Eragrostis Tef. University of Bern, 2014. [Image online] Available at: <http://www.tef-research.org/images/tef4.jpg> [Accessed October 26, 2015]

Figure 2.53

Rehabilitation strategy (Author 2015)

Figure 2.54.1

Phragmites Australis. Royal Horticultural Society, 2002. [Image online] Available at: https://apps.rhs.org.uk/plantselectorimages/detail/WSY0035808_3470.jpg [Accessed October 26, 2015]

ber 26, 2015]

Section through wetland, sorting and washing facility and cultivated area. (Author 2015)

Figure 2.54.2

Typha Capensis. Zeekoevlei.co.za, 2014.

Figure 2.60

[Image online] Available at: <http://www.zeekoevlei.co.za/wp-content/uploads/2015/02/bulrushes-600x399.jpg> [Accessed October 26, 2015]

Section market and infrastructural core. (Author 2015)

Figure 2.54.3

Cyperus Prolifer. Haakdoorn Nursery, 2015.

Figure 3.1

[Image online] Available at: http://d13z1x-w8270sfc.cloudfront.net/origin/68491/cyperus_prolifer.jpg [Accessed October 26, 2015]

Site plan. (Author 2015)

Figure 2.54.4

Cyperus Sexangularis. Wild flower nursery, 2015. [Image online] Available at: <http://wildflownursery.co.za/wp-content/uploads/2015/07/Cyperus-sexangularis-500x306.jpg> [Accessed October 26, 2015]

Figure 3.2

Plan level 1. (Author 2015)

Figure 3.3

Plan level 2. (Author 2015)

Figure 3.4 Plan level 3. (Author 2015)

Figure 2.55

Proposed water treatment strategy (Author 2015)

Figure 3.5

Section through mining spine. (Author 2015)

Figure 3.6

Section through mining spine. (Author 2015)

Figure 2.56

Gas Extraction system (Author 2015)

Figure 3.7

Section through sorting facility and wetland. (Author 2015)

Figure 2.57

Gas Extraction in relation to mining (Author 2015)

Figure 3.8

Axonometric of site. (Author 2015)

Figure 2.58

Section development (Author 2015)

Figure 3.9

Section through electronic waste processing. (Author 2015)

Figure 2.59

Figure 3.10

Section through service core and market

space. (Author 2015)

Figure 3.20 Axonometric of site. (Author 2015)

Figure 3.11
Section through natural waste processing.
(Author 2015)

Figure 3.12
Axonometric of site. (Author 2015)

Figure 3.13
Detail A. (Author 2015)

Figure 3.14
Detail B. (Author 2015)

Figure 3.15
Detail C. (Author 2015)

Figure 3.16
Detail D. (Author 2015)

Figure 3.17
Detail E. (Author 2015)

Figure 3.18
Perspective of elevated walkway. (Author 2015)

Figure 3.19
Final model. (Author 2015)

Figure 3.20
Final model. (Author 2015)

Figure 3.21
Perspective of Market spaces. (Author 2015)

Big thanks to Jaco, Abigail, Sandeep and Hugo
who helped me throughout the year. I am greatly
indebted to you all.