

Figure S1: Maximum likelihood analysis of TPS-a subfamily from *E. grandis* and *E. globulus* in comparison to *Solanum lycopersicum*, *Oryza sativa*, *Populus trichocarpa*, *Sorghum bicolor*, *Vitis vinifera* and *Arabidopsis thaliana*. Bootstrap values supported by $\geq 80\%$ are designated * while those with bootstrap values $\geq 95\%$ are designated °.

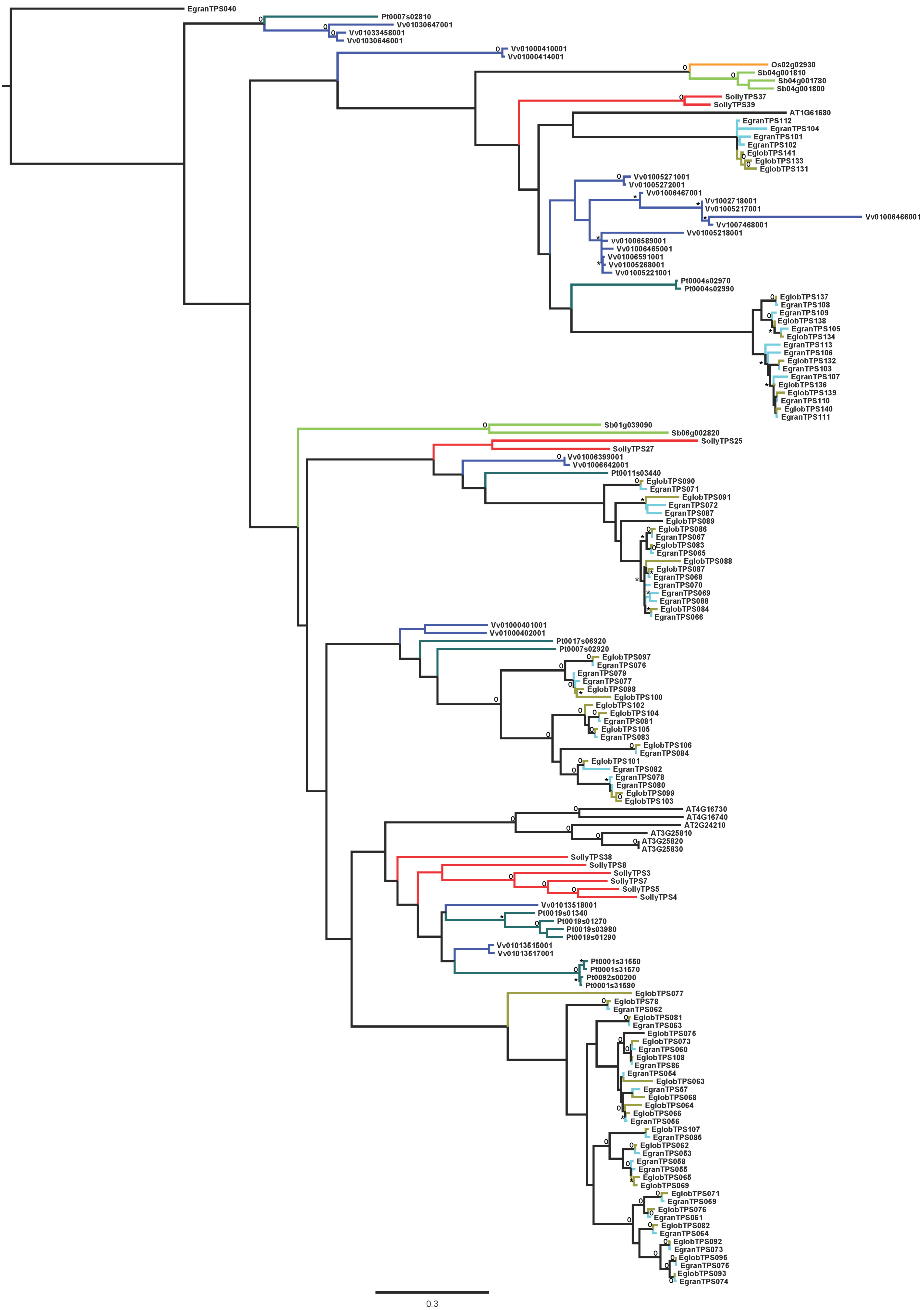


Figure S2: Maximum likelihood analysis of TPS-b and -g subfamilies from *E. grandis* and *E. globulus* in comparison to *Solanum lycopersicum*, *Oryza sativa*, *Populus trichocarpa*, *Sorghum bicolor*, *Vitis vinifera* and *Arabidopsis thaliana*. Bootstrap values supported by $\geq 80\%$ are designated * while those with bootstrap values $\geq 95\%$ are designated °.

