

Variation in growth rates and aggressiveness of naturally occurring self-fertile and self-sterile isolates of the wilt pathogen *Ceratocystis albifundus*

D. H. Lee^a, J. Roux^a, B. D. Wingfield^b and M. J. Wingfield^{a*}

^aDepartment of Microbiology and Plant Pathology, Forestry and Agricultural Biotechnology Institute (FABI), University of Pretoria; and

^bDepartment of Genetics, Forestry and Agricultural Biotechnology Institute (FABI), University of Pretoria, Private Bag X20, Hatfield, Pretoria 0028, South Africa

Ceratocystis albifundus is the most important fungal pathogen of black wattle (*Acacia mearnsii*) grown in plantations in southern and eastern Africa. It is a homothallic fungus but also undergoes unidirectional mating type switching. As a result, the ascospore progeny can be either self-fertile or self-sterile. The only apparent difference between these mating types is the deletion of the *MAT1-2-1* gene in self-sterile isolates. There is some evidence suggesting that self-sterile isolates grow more slowly than self-fertile isolates, but this has not been tested rigorously. The aim of this study was to determine whether self-sterile isolates are less fit by examining growth rate, relative germination rate and pathogenicity. Five self-sterile isolates were generated from each of five self-fertile isolates of *C. albifundus* and these 30 isolates were compared. The results showed that the self-sterile isolates grew consistently slower and were less pathogenic than the self-fertile isolates. The germination ratio of self-fertile to self-sterile isolates from single ascospores collected from the ascomata of five self-fertile isolates was on average 7:3. This could be a consequence of the self-sterile isolates having a lower germination rate. This observation, and the lower growth and pathogenicity levels, suggests that self-sterile isolates are not likely to compete effectively in nature, raising intriguing questions regarding their role and value to *C. albifundus* and other fungi having a similar mating system.

Keywords: *Ceratocystis albifundus*, fitness, self-fertile mating type, self-sterile mating type

Introduction

Ceratocystis albifundus is an important fungal pathogen, posing a considerable threat to forestry plantations based on Australian *Acacia mearnsii* trees. This fungus is the causative agent of black wattle wilt disease in southern and eastern Africa (Morris *et al.*, 1993; Wingfield *et al.*, 1996; Roux & Wingfield, 1997; Roux *et al.*, 2005). Disease symptoms that develop after infection by *C. albifundus* include the formation of cankers and lesions in the bark, gum exudation and streaked discolouration of the xylem associated with colonization of the vascular tissue. Infected trees can wilt and die within 6 weeks after infection (Roux *et al.*, 1999).

Mating in ascomycetes is strictly controlled by a single mating locus with two allelic or idiomorphic forms, *MAT1-1* and *MAT1-2*, which represent alternate alleles that differ in length, sequences and structure (Turgeon *et al.*, 1993; Coppin *et al.*, 1997). *Ceratocystis albifundus* is a homothallic fungus that is capable of selfing, enabling it to produce sexual offspring without having a partner of

opposite mating type. This is possible because fertile isolates have all three *MAT* genes: *MAT1-1-1*, *MAT1-1-2* and *MAT1-2-1*. Furthermore, unidirectional mating type switching can occur during meiosis, giving rise to self-sterile mating type strains carrying only *MAT1-1-1* and *MAT1-1-2* genes as a result of the deletion of the *MAT1-2-1* gene. The *MAT1-2-1* gene is entirely lost from the genome and these isolates are thus unable to revert back to their self-fertile status (Perkins, 1987; Harrington & McNew, 1997; Witthuhn *et al.*, 2000; Wilken *et al.*, 2014). Wilken *et al.* (2014) further showed that self-fertile isolates of *C. fimbriata* are genetically identical to the parent strain, while the only apparent difference between the self-sterile isolates and the parent isolate is that they lack the *MAT1-2-1* gene from their entire genome.

Homothallic fungi do not require a compatible mating partner for sexual reproduction due to the ability to self-mate with their own mitotic descendants, giving rise to genetically identical progeny (Lin & Heitman, 2007; Billiard *et al.*, 2011). In this regard, the haploid selfing in homothallic mating systems could result in low levels of genetic diversity and a likelihood of inbreeding depression. Nevertheless, many fungi are homothallic and this form of reproduction is common in nature (Nelson, 1996; McGuire *et al.*, 2001; Gioti *et al.*, 2012). In the case of unidirectional mating type switching, it might be argued that the self-sterile isolates are forced to mate with other

*E-mail: mike.wingfield@fabi.up.ac.za

isolates, thus increasing genetic diversity within a population, although fungi having the homothallic mating system do have the potential to outcross. There is, however, some evidence that the self-sterile isolates are less fit than self-fertile isolates (De Beer, 1994; Harrington & McNew, 1995, 1997; Roux, 1996; Witthuhn *et al.*, 2000), but this has not been tested for *Ceratocystis* species.

Fitness of microorganisms is characterized by phenotypic and genotypic traits heritable from generation to generation through successful reproduction, and consequently successful survival in a given environment (Pringle & Taylor, 2002). It has been suggested that growth rate is a simple and convenient means to measure the fitness of fungal pathogens (Pringle & Taylor, 2002). In addition, spore production rate and pathogenicity have been applied as quantitative traits to estimate the fitness of fungal pathogens (Pariaud *et al.*, 2009). Traits such as faster growth and higher levels of pathogenicity give a competitive advantage to individual pathogens, which ultimately facilitates more effective host colonization (Lockhart *et al.*, 2005; Meyer *et al.*, 2010).

There are many phenotypic differences between self-fertile and self-sterile mating type strains in filamentous ascomycetes. These, for example, include ascospore size and dimorphism, and formation of fruiting bodies, as well as more rapid linear growth rates (Webster & Butler, 1967; Uhm & Fujii, 1983; Perkins, 1987; Harrington & McNew, 1995, 1997; Witthuhn *et al.*, 2000). Specifically, Witthuhn *et al.* (2000) reported that self-fertile mating strains in some *Ceratocystis* species have more rapid linear growth than the self-sterile isolates. In this study, the possible differences in fitness between self-fertile and self-sterile strains of *C. albifundus* were considered by comparing growth rates, levels of aggressiveness in inoculation studies and percentage germination.

Materials and methods

Collection and identification of isolates

All isolates of the wilt pathogen *C. albifundus* used in this study (CMW39129, CMW39130, CMW39131, CMW39132 and CMW39133) were collected on the Bloemendal Experimental farm, near Pietermaritzburg in the KwaZulu-Natal Province of South Africa, where *A. mearnsii* trees are propagated commercially. Pieces of bark bearing characteristic ascomata of *C. albifundus* were removed from bark flaps on tree stumps of recently felled trees. Cultures were made from the spore drops that were produced at the apices of the ascocarps collected from different trees. These were transferred directly onto separate Petri dishes (65 mm) containing 2% malt extract agar (MEA; 20 g malt extract, Biolab; 20 g agar, Difco) supplemented with 100 mg L⁻¹ streptomycin sulphate (Sigma-Aldrich), and incubated at 25°C for 2 weeks in the dark. All the isolates used in this study were deposited in the Culture Collection (CMW) of the Forestry and Agricultural Biotechnology Institute (FABI), University of Pretoria, South Africa.

Five single ascospore isolates, from five different trees, producing prolific numbers of ascomata were chosen for study. These were identified based on morphology and using

DNA sequence comparisons as described below. *Ceratocystis albifundus* can be distinguished from all other *Ceratocystis* species based on its characteristic light/cream-coloured ascomatal bases, bearing black necks and producing hat-shaped ascospores (Wingfield *et al.*, 1996). The five selected isolates were then identified using sequences of the internal transcribed spacer regions (ITS1, ITS2) and 5.8S rDNA gene regions, as follows.

All *C. albifundus* cultures were incubated for 2 weeks to facilitate mycelial growth. Mycelium of the fungus was scraped from the surfaces of Petri dishes with sterilized surgical scalpel blades, transferred into 1.5 mL Eppendorf tubes and ground to a fine powder with a pestle. Genomic DNA was extracted using PrepMan Ultra (Applied Biosystems) following the manufacturer's instructions. The quantity and quality of DNA extracted was assessed with a spectrophotometer (ND-1000; NanoDrop) to calibrate the concentration and purity of DNA as PCR templates.

The PCR amplification reactions were conducted on a Veriti 96-well thermal cycler (Applied Biosystems). The total volume of each PCR reaction mixture was 15 µL, containing 0.5 µL genomic DNA, 0.3 µL (10 pM) of each primer (forward and reverse), 3 µL MyTaq PCR buffer (Bioline) and 0.09 µL MyTaq DNA polymerase (Bioline). The PCR cycling profile consisted of an initial denaturation at 97°C for 5 min; 35 cycles of denaturation at 95°C for 1 min, annealing at 55°C for 1 min, and extension at 72°C for 1 min; and a final extension at 72°C for 10 min. Sequencing was performed in both directions using primers ITS1F and ITS4 (White *et al.*, 1990) and the Big Dye Terminator v. 3.1 cycle sequencing premix kit (Applied Biosystems) according to the instructions provided by the manufacturer. Sequences were determined using an ABI PRISM 3100 Genetic Analyzer (Applied Biosystems). Sequencing results were compared with published sequences of *C. albifundus*, obtained from GenBank, using BioEDIT v. 7.0.9.0 sequence alignment editor (Hall, 1999).

Mating type proportion from single ascospore progenies

Single ascospore cultures were made directly from ascomata produced by the five self-fertile isolates confirmed to be *C. albifundus*. Ascospore masses transferred from the apices of the ascomata were suspended in 50 µL isoparaffin solvent, Soltrol 130 (Chemfit) to facilitate dispersal (Whitney & Blauel, 1972) of the hydrophobic *Ceratocystis* ascospores. About 5 µL of spore suspension was streaked over the surfaces of 3.5% water agar (WA; 35 g L⁻¹ agar, Difco) in 90 mm Petri dishes using a platinum wire loop and incubated at 25°C for 72 h until germination of single ascospores was observed. Agar disks containing individual germlings were excised with an aseptic syringe needle and transferred onto 2% malt yeast extract agar (MYEA; 20 g malt extract and 2 g yeast extract, Biolab, 20 g agar, Difco). Fifty single ascospore isolates were made from each of five parental isolates of *C. albifundus* and these represented self-fertile and self-sterile mating type progeny. The plates were incubated at 25°C for 2 weeks, and the ratio of self-fertile to self-sterile strains of *C. albifundus* was calculated.

Both morphological characters and molecular characterization were used to ensure the mating type identity of the self-fertile and self-sterile strains obtained from each of the five parental isolates. The presence or absence of ascomata was used as an initial indication of the mating type of the isolates (Webster & Butler, 1967). Two primer sets, Albi_MAT1-2_F/Albi_MAT1-2_R and Albi_MAT2-1_F/Albi_MAT2-1_R, were used to amplify the *MAT1-1-2* and *MAT1-2-1* genes in the *MAT* locus

in five representative isolates from each of the mating types (Table 1). The amplification reactions were conducted on a Veriti 96-well thermal cycler. The total volume of the PCR reaction mixtures were 15 μ L, containing 0.5 μ L genomic DNA, 0.3 μ L (10 pM) of each primer (forward and reverse), 3 μ L MyTaq PCR buffer (Bioline) and 0.09 μ L MyTaq DNA polymerase (Bioline). The thermocycling profile for amplification of MAT genes consisted of an initial denaturation at 97°C for 1 min; 35 cycles of denaturation at 95°C for 15 s, annealing at 55°C for 30 s, and extension at 72°C for 30 s; and a final extension at 72°C for 7 min. The amplification products were analysed by electrophoresis using a Mini-Sub cell GT cell (Bio-Rad) and a PS500X DC Power Supply (Hofer Scientific) on a 1.5% (w/v) agarose gel in 1 \times TAE buffer (40 mM Tris, 20 mM acetic acid, 1 mM EDTA, pH 8), and then visualized using a Bio-Rad Gel Doc EZ imager and IMAGE LAB v. 3.0 software.

Assessment of growth rates

Five confirmed self-sterile isolates from each of the five self-fertile parental strains, as well as the parental strains themselves, were compared for growth rate. Growth rates were assessed by transferring 5 mm plugs from the edges of actively growing cultures onto the centres of 75 mm Petri dishes containing 2% MYEA. The cultures were then incubated at 25°C for 2 weeks. Two measurements for colony diameter at right angles to each other were taken for each of the 25 self-sterile and five self-fertile isolates, daily for 2 weeks. The average growth and standard deviations were then calculated. The entire experiment was repeated once.

Assessment of aggressiveness

In order to detect possible differences in aggressiveness between self-fertile and self-sterile mating type strains of *C. albifundus*, inoculation trials were conducted on *c.* 2-year-old *A. mearnsii* trees located in a jungle stand near Pretoria East, Gauteng, South Africa. Trees of *c.* 70 mm diameter were inoculated at *c.* 1.5 m above ground. A total of 50 trees were inoculated with each of the five parental self-fertile strains (250 trees) and 20 trees were inoculated with each of 25 self-sterile isolates, five of which were derived from each of the five parental strains (total 500 trees). Twenty trees were used as controls by inoculating them with sterile MYEA.

Discs of agar bearing mycelium were taken from the margins of actively growing, 2-week-old cultures with a 7 mm cork borer. For the inoculations, a wound was made on the stems of trees, using a 7 mm cork borer, to expose the cambium and the agar discs overgrown with the test strain were inserted into the wounds, with the mycelium facing the cambium. All inoculation points were covered with masking tape to prevent desiccation of the inoculum and cambium and to reduce contamination.

The inoculation study was conducted in two separate trials established in November 2012 and in December 2012,

respectively. The inoculated trees were assessed after 6 weeks during December 2012 and January 2013, respectively, and lesion lengths were measured. Reisolations were made from two trees for each treatment and the resulting fungi were identified to ensure that the inoculated fungi were responsible for the infections observed (Koch's postulates).

Statistical analysis

A chi-square analysis was used to test for statistical support of possible differences in the proportion of each mating type emerging from the single ascospore isolations; 95% confidence was accepted as an acceptable level of significance. The value for the degrees of freedom was established based on the number of mating types (self-fertile and self-sterile). The null hypothesis was that no significant differences would be observed in the production of self-fertile and self-sterile mating type progeny from single ascospore isolations. A test of independence was also conducted to determine whether there was a significant difference in each single ascospore isolation trial.

Welch's two-sample *t*-test and analysis of variance (ANOVA) and Tukey's honestly significance difference (Tukey's HSD) test were used to determine whether there were significant differences in the growth rates or aggressiveness of self-fertile and self-sterile mating types based on a *P*-value computed using R v. 2.5.1 (<http://www.r-project.org/>; R Core Team, 2012). In addition, general linear models (GLM) using R v. 2.5.1 were applied to test the hypothesis that the ability of the self-fertile mating type isolates to grow faster is closely correlated with a higher level of aggressiveness compared to the self-sterile mating type isolates.

Results

Collection and identification of isolates

Ceratocystis albifundus isolates were successfully obtained from the stumps of recently (4 weeks previously) harvested *A. mearnsii* trees. Fruiting bodies produced on MYEA medium had morphological features typical of *C. albifundus*, including light-coloured ascomatal bases (Wingfield *et al.*, 1996). This identification based on morphology was supported by ITS sequence data where the maximum percentage identity of the isolates was almost identical (99%) when analysed using BLAST against those of *C. albifundus* strains in NCBI. All sequence data obtained in this study have been deposited in NCBI (accession numbers KF147144 to KF147148).

Mating type proportion from single ascospore progenies

In total, 50 single ascospore progeny were recovered from each of the five parental self-fertile mating type isolates. The segregation ratio of self-fertile to self-sterile isolates was significantly biased towards the self-fertile mating type for four of the parental strains (CMW39129, CMW39130, CMW39131 and CMW39132). Exceptions were found for isolates CMW39131 in the second trial and CMW39133 in both trials, which both had a segregation ratio close to 1:1 for self-fertile to self-sterile

Table 1 Primers used for amplification of MAT genes

Primer	Sequence (5'–3')	Product size (bp)
Albi_MAT1-2_F	ATAGCAAAGGTAATCGGTCT	834
Albi_MAT1-2_R	GCCGTCGAAAGAATCCTA	
Albi_MAT2-1_F	CCCTTCATTTGGCCCAT	596
Albi_MAT2-1_R	CATCAAGTCTGTGCATCCA	

Table 2 Segregation of self-fertile and self-sterile progeny of five self-fertile isolates of *Ceratocystis albifundus*

Isolate	Mating type of successfully germinated spores						Failed to germinate	
	1st trial		Chi-square	2nd trial		Chi-square	1st trial	2nd trial
	Self-fertile	Self-sterile		Self-fertile	Self-sterile			
CMW39129	27	13	4.90 ^a	31	17	4.08 ^a	10	2
CMW39130	33	10	11.26 ^a	30	16	4.26 ^a	7	4
CMW39131	31	11	9.52 ^a	28	17	2.22 ^a	8	5
CMW39132	31	17	4.08 ^a	34	11	10.76 ^a	2	5
CMW39133	26	18	1.45	25	23	0.08	6	2

^aSignificantly different from 1:1 ratio at 0.05 probability level.

mating types (Table 2). The greatest deviation from a 1:1 segregation ratio was found for isolates CMW39130 and CMW39131 in the first trial and CMW39132 isolate in the second trial, where this ratio was *c.* 3:1. Overall, the segregation ratio of self-fertile to self-sterile was *c.* 1.5:1 on average (Table 2). The bias of segregation towards the self-fertile mating type was supported statistically, based on chi-square analysis at a 95% confidence level (Table 2).

Assessment of growth rates

All the self-fertile isolates exhibited more rapid growth in comparison to the five self-sterile isolates derived from each of them, although isolates representing each of the two mating types had similar growth rates and produced similar growth patterns on MYEA at 25°C (Fig. 1). These observations were also strongly supported statistically (Welch's two sample *t*-test, $P < 0.001$).

Assessment of aggressiveness

In both inoculation trials, self-fertile isolates consistently produced longer lesions than the self-sterile isolates

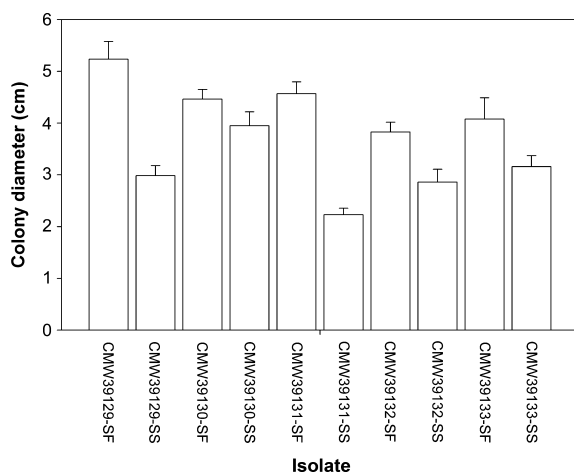


Figure 1 Average growth of self-fertile (-SF) and self-sterile (-SS) isolates of *Ceratocystis albifundus*, after incubation on malt yeast extract agar for 2 weeks at 25°C. Bars represent standard deviation of the mean.

derived from them (data shown only for the second trial which were identical to those of the first trial; Figs 2 & 3). Self-fertile strains resulted in distinct black lesions on the stems, gum exudation and streaking in the cambium 6 weeks after inoculation. In contrast, self-sterile strains were not found to be associated with the same severe symptoms. Reisolations from the lesions consistently yielded self-fertile and self-sterile isolates morphologically indistinguishable from the inoculated isolates. The hypothesis that there is a significant difference in aggressiveness between self-fertile and self-sterile isolates was statistically supported by analysis of variance ($P = 2E-16$) and Tukey's HSD test ($P = 0$ at the 95% confidence level).

Correlation of growth and aggressiveness

Four measurements including growth rate and aggressiveness of isolates, representing both mating types, were applied to GLM tests available in R v. 2.5.1. The results showed that self-fertile isolates have superior fitness based on growth rate as well as pathogenicity. This was evident from a significant correlation between growth rate and aggressiveness of self-fertile and self-sterile isolates based on GLM tests (coefficient = 4.534, standard error = 1.031, *t*-value = 4.397, probability ($>|t|$) = 0.002).

Discussion

This study showed that there are significant differences in growth and aggressiveness between self-fertile parental and self-sterile offspring strains of the wilt pathogen *C. albifundus*. These parental and offspring strains are essentially identical because this fungus is haploid, although minor differences in the strains could have resulted as the consequence of sexual recombination. Self-sterile isolates of *C. albifundus* lack a single gene at the mating type locus. This deletion appears to have resulted in self-sterile isolates being significantly less fit than their self-fertile counterparts.

Fungal pathogens that reproduce sexually would typically be expected to produce equal frequencies of progeny representing the two different mating types (Fisher, 1930). The same results have been reported for

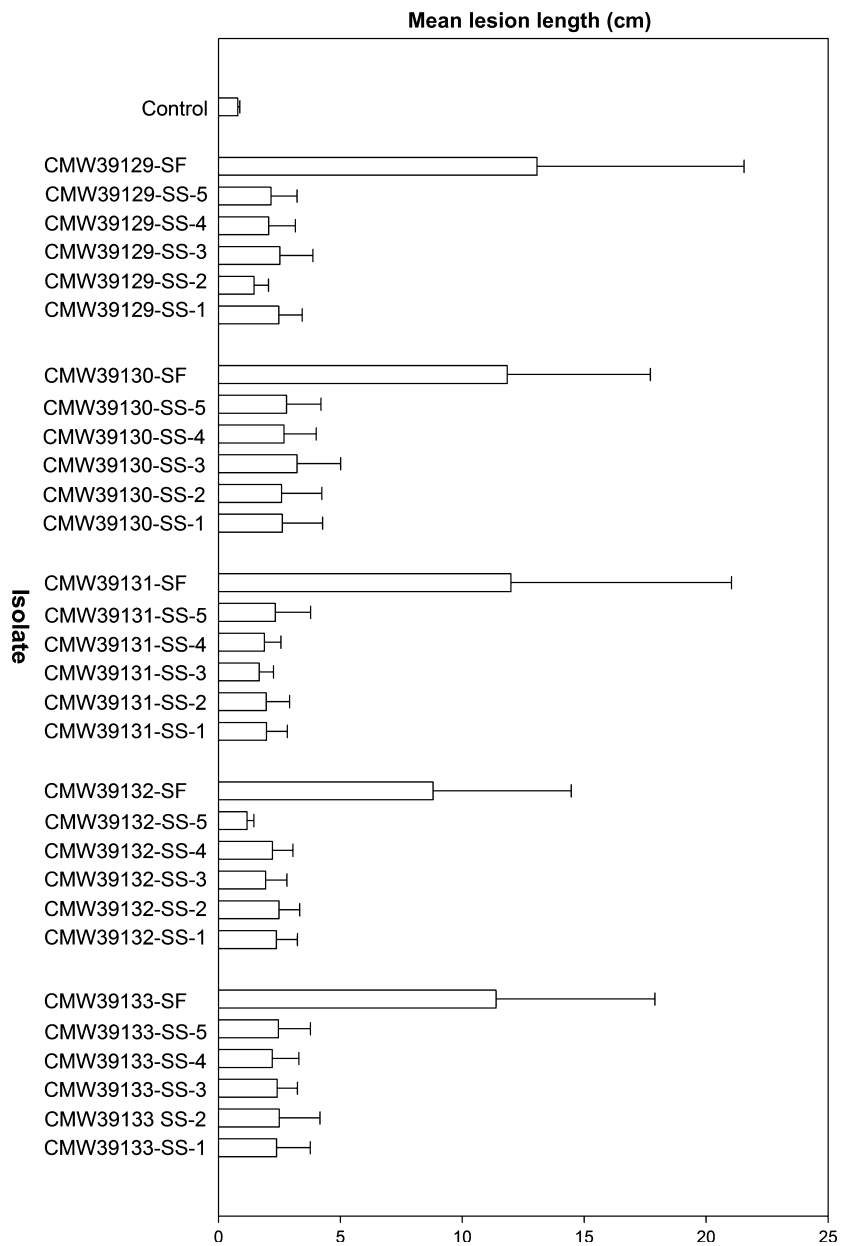


Figure 2 Mean lesion lengths on *Acacia mearnsii* trees 6 weeks after inoculation with self-fertile (-SF) and self-sterile (-SS) isolates of *Ceratocystis albifundus*, sterile agar as control. The bar represents standard deviation of the mean.

Ceratocystis coerulescens (Harrington & McNew, 1997). In contrast, isolates of *C. albifundus* studied here showed a significant bias towards self-fertile mating. A similar bias is known in other fungal pathogens (Kwon-Chung & Bennett, 1978; Wickes *et al.*, 1996; Nieuwenhuis & Aanen, 2012). The bias towards the self-fertile isolates could possibly arise from ascospores that have a reduced capacity to germinate or, alternatively, fewer ascospores representing the self-sterile form might be produced in each individual ascus. This, however, has not been tested.

Growth rate has been shown to represent a simple and efficient means to estimate the relative fitness of fungal

populations (Pringle & Taylor, 2002; Schoustra *et al.*, 2009). In this study, evidence for a lower level of fitness in self-sterile isolates was supported by the growth tests. All self-fertile mating type strains showed more rapid growth than self-sterile mating type strains. Although this has been suggested previously (De Beer, 1994; Harrington & McNew, 1995, 1997; Roux, 1996; Witthuhn *et al.*, 2000), the current study is the first where molecular tools have been used to confirm the mating type of strains beyond doubt. The only apparent difference between the self-fertile and self-sterile isolates might be the deletion in the *MAT1-2-1* gene. This seems to be the

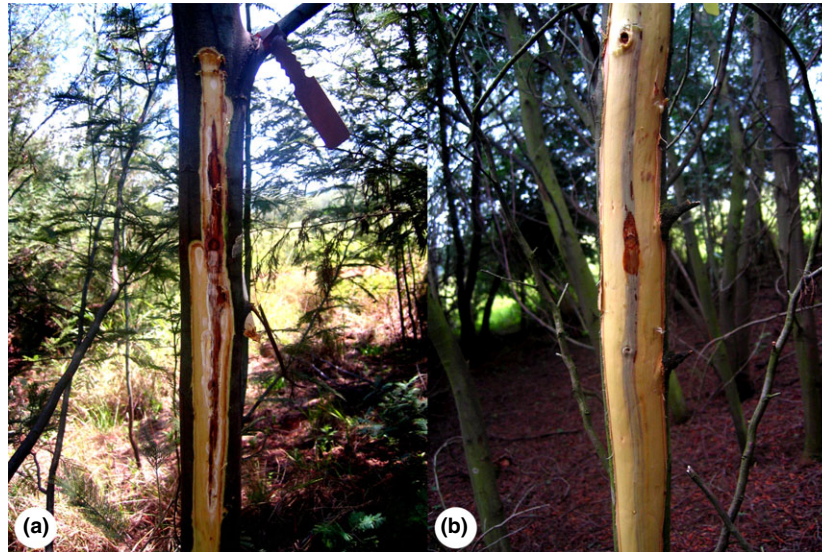


Figure 3 Disease symptoms on the stems of *Acacia mearnsii* trees caused by different mating type strains of *Ceratocystis albifundus*. Lesion caused by self-fertile mating strain (a); lesion caused by self-sterile mating strain (b).

most plausible reason for the reduction in growth, although the mechanism is not understood.

Extensively repeated inoculation tests using a large number of isolates showed that self-fertile isolates of *C. albifundus* are significantly more aggressive than self-sterile isolates. Likewise, growth rate for the test isolates was positively correlated with aggressiveness of isolates. A correlation between growth rate and pathogenicity has been shown for various other ascomycete fungal pathogens (Belisario *et al.*, 2008; Brasier & Kirk, 2010). Furthermore, it has also been suggested that differences in pathogenicity can be attributed to the involvement of mating type genes in fungi (Lockhart *et al.*, 2005; Zhan *et al.*, 2007). However, in both these examples, and unlike *C. albifundus*, the fungi were heterothallic and thus the mechanism underpinning the differences in pathogenicity are likely to be different.

There are very few fungi that undergo unidirectional mating type switching like that found in the tree pathogen *C. albifundus*. Although the evolutionary advantages for this irreversible switching are not understood, the fact that distinct differences in fitness of self-fertile and self-sterile isolates have been shown suggests that such an advantage exists. Unidirectional mating type switching is also a common feature in species of *Ceratocystis* as defined by De Beer *et al.* (2014) and related to *C. fimbriata* (Harrington & McNew, 1995, 1997; Wilken *et al.*, 2014) and it is likely that similar differences in fitness of self-fertile and self-sterile isolates exist in species in this genus other than *C. albifundus*. Logically, maintaining this system, which would require significant amounts of energy to be channelled into producing progeny with low levels of fitness, would be counterproductive. Nevertheless, there may be some advantages to be gained from this strategy. For example, the self-sterile

isolates may increase the genetic diversity in a population by fully exploiting the benefits of sexual recombination. This might be particularly valuable to species that have the potential to self-cross, although homothallic isolates also have the potential to outcross. Future studies should, therefore, consider the level of outcrossing that occurs in *Ceratocystis* species in nature.

Acknowledgements

The authors thank members of the Tree Protection Cooperative Program (TPCP), the National Research Foundation (NRF; Grant Specific Unique Reference Number 83924) and the THRIP initiative of the Department of Trade and Industry (DTI), and the Department of Trade and Industry (DST)/NRF Centre of Excellence in Tree Health Biotechnology, South Africa for financial support. The grant holders acknowledge that opinions, findings and conclusions or recommendations expressed in any publication generated by the NRF-supported research are that of the author(s), and that the NRF accepts no liability whatsoever in this regard. The authors also thank the owner of the farm, Frank Da Serra, who allowed them to carry out inoculation trials and collect samples. Primer pairs, Albi_MAT1-2 and Albi_MAT2-1, were kindly made available by Danielle Roodt. The authors are grateful to two anonymous reviewers for critical inputs regarding the improvement of this manuscript.

References

- Belisario A, Scotton M, Santori A, Onofri S, 2008. Variability in the Italian population of *Gnomonia leptostyla*, homothallism and resistance of *Juglans* species to anthracnose. *Forest Pathology* 38, 129–45.

- Billiard S, López-Villavicencio M, Devier B, Hood ME, Fairhead C, Giraud T, 2011. Having sex, yes, but with whom? Inferences from fungi on the evolution of anisogamy and mating types. *Biological Reviews* 86, 421–42.
- Brasier CM, Kirk SA, 2010. Rapid emergence of hybrids between the two subspecies of *Ophiostoma novo-tulmi* with a high level of pathogenic fitness. *Plant Pathology* 59, 186–99.
- Coppin E, Debuchy R, Arnaise S, Picard M, 1997. Mating types and sexual development in filamentous ascomycetes. *Microbiology and Molecular Biology Reviews* 61, 411–28.
- De Beer C, 1994. *Ceratocystis fimbriata* with Special Reference to its Occurrence as a Pathogen of *Acacia mearnsii* in South Africa. Bloemfontein, South Africa: University of the Orange Free State, MSc thesis.
- De Beer ZW, Duong TA, Barnes I, Wingfield BD, Wingfield MJ, 2014. Redefining *Ceratocystis* and allied genera. *Studies in Mycology* 79, 187–219.
- Fisher RA, 1930. *The Genetical Theory of Natural Selection*. Oxford, UK: Clarendon Press.
- Gioti A, Mushegian AA, Strandberg R, Stajich JE, Johannesson H, 2012. Unidirectional evolutionary transitions in fungal mating systems and the role of transposable elements. *Molecular Biology and Evolution* 29, 3215–26.
- Hall TA, 1999. BioEDIT: a user-friendly biological sequence alignment editor and analysis program for Windows 95/98/NT. *Nucleic Acids Symposium Series* 41, 95–8.
- Harrington TC, McNew DL, 1995. Mating-type switching and self-fertility in *Ceratocystis*. *Inoculum* 46, 18.
- Harrington TC, McNew DL, 1997. Self-fertility and uni-directional mating-type switching in *Ceratocystis coerulea*, a filamentous ascomycete. *Current Genetics* 32, 52–9.
- Kwon-Chung KJ, Bennett JE, 1978. Distribution of α and α mating types of *Cryptococcus neoformans* among natural and clinical isolates. *American Journal of Epidemiology* 108, 337–40.
- Lin X, Heitman J, 2007. Mechanisms of homothallism in fungi and transitions between heterothallism and homothallism. In: Heitman J, Kronstad JW, Taylor JW, Casselton LA, eds. *Sex in Fungi: Molecular Determination and Evolutionary Implications*. Washington, DC, USA: ASM Press, 35–57.
- Lockhart SR, Wu W, Radke JB, Zhao R, Soll DR, 2005. Increased virulence and competitive advantage of α/α over α/α or α/α offspring conserves the mating system of *Candida albicans*. *Genetics* 169, 1883–90.
- McGuire IC, Marra RE, Turgeon BG, Milgroom MG, 2001. Analysis of mating-type genes in the chestnut blight fungus, *Cryphonectria parasitica*. *Fungal Genetics and Biology* 34, 131–44.
- Meyer SE, Stewart TE, Clement S, 2010. The quick and the deadly: growth vs virulence in a seed bank pathogen. *New Phytologist* 187, 209–16.
- Morris MJ, Wingfield MJ, De Beer C, 1993. Gummosis and wilt of *Acacia mearnsii* in South Africa caused by *Ceratocystis fimbriata*. *Plant Pathology* 42, 814–7.
- Nelson MA, 1996. Mating systems in ascomycetes: a romp in the sac. *Trends in Genetics* 12, 69–74.
- Nieuwenhuis BPS, Aanen DK, 2012. Sexual selection in fungi. *Journal of Evolutionary Biology* 25, 2397–411.
- Pariaud B, Ravigné V, Halkett F, Goyeau H, Carlier J, Lannou C, 2009. Aggressiveness and its role in the adaptation of plant pathogens. *Plant Pathology* 58, 409–24.
- Perkins DD, 1987. Mating-type switching in filamentous ascomycetes. *Genetics* 115, 215–6.
- Pringle A, Taylor JW, 2002. The fitness of filamentous fungi. *Trends in Microbiology* 10, 474–81.
- R Core Team, 2012. R: A Language and Environment for Statistical Computing. Vienna, Austria: R Foundation for Statistical Computing. [http://www.R-project.org/]. Accessed 6 January 2015.
- Roux J, 1996. *A Preliminary Study of the Diseases of Acacia mearnsii de Wild in South Africa*. Bloemfontein, South Africa: University of the Orange Free State, PhD thesis.
- Roux J, Wingfield MJ, 1997. Survey and virulence of fungi occurring on diseased *Acacia mearnsii* in South Africa. *Forest Ecology and Management* 99, 327–36.
- Roux J, Dunlop R, Wingfield MJ, 1999. Susceptibility of elite *Acacia mearnsii* families to *Ceratocystis* wilt in South Africa. *Journal of Forest Research* 4, 187–90.
- Roux J, Meke G, Kanyi B et al., 2005. Diseases of plantation forestry trees in eastern and southern Africa. *South African Journal of Science* 101, 409–13.
- Schoustra SE, Bataillon T, Gifford DR, Kassen R, 2009. The properties of adaptive walks in evolving populations of fungus. *PLoS Biology* 7, e1000250.
- Turgeon BG, Bohlmann H, Ciuffetti LM et al., 1993. Cloning and analysis of the mating type genes from *Cochliobolus heterostrophus*. *Molecular and General Genetics* 238, 270–84.
- Uhm JY, Fujii H, 1983. Ascospore dimorphism in *Sclerotinia trifoliorum* and cultural characters of strains from different-sized spores. *Phytopathology* 73, 565–9.
- Webster RK, Butler EE, 1967. The origin of self-sterile, cross-fertile strains and culture sterility in *Ceratocystis fimbriata*. *Mycologia* 59, 212–21.
- White TJ, Bruns T, Lee S, Taylor J, 1990. Amplification and direct sequencing of fungal ribosomal RNA genes for phylogenetics. In: Innis MA, Gelfand DH, Sninsky JJ, White TJ, eds. *PCR Protocols: A Guide to Methods and Applications*. New York, NY, USA: Academic Press, 315–22.
- Whitney HS, Blauel RA, 1972. Ascospore dispersion in *Ceratocystis* spp. and *Europhium clavigerum* in conifer resin. *Mycologia* 64, 410–4.
- Wickes BL, Mayorga ME, Edman U, Edman JC, 1996. Dimorphism and haploid fruiting in *Cryptococcus neoformans*: association with the alpha-mating type. *Proceedings of the National Academy of Sciences USA* 93, 7327–31.
- Wilken PM, Steenkamp ET, Wingfield MJ, de Beer ZW, Wingfield BD, 2014. DNA loss at the *Ceratocystis fimbriata* mating locus results in self-sterility. *PLoS ONE* 9, e92180.
- Wingfield MJ, De Beer C, Visser C, Wingfield BD, 1996. A new *Ceratocystis* species defined using morphological and ribosomal DNA sequence comparisons. *Systematic and Applied Microbiology* 19, 191–202.
- Witthuhn RC, Harrington TC, Wingfield BD, Steimel JP, Wingfield MJ, 2000. Deletion of the MAT-2 mating-type gene during uni-directional mating-type switching in *Ceratocystis*. *Current Genetics* 38, 48–52.
- Zhan J, Torriani SFF, McDonald BA, 2007. Significant difference in pathogenicity between MAT1-1 and MAT1-2 isolates in the wheat pathogen *Mycosphaerella graminicola*. *Fungal Genetics and Biology* 44, 339–46.