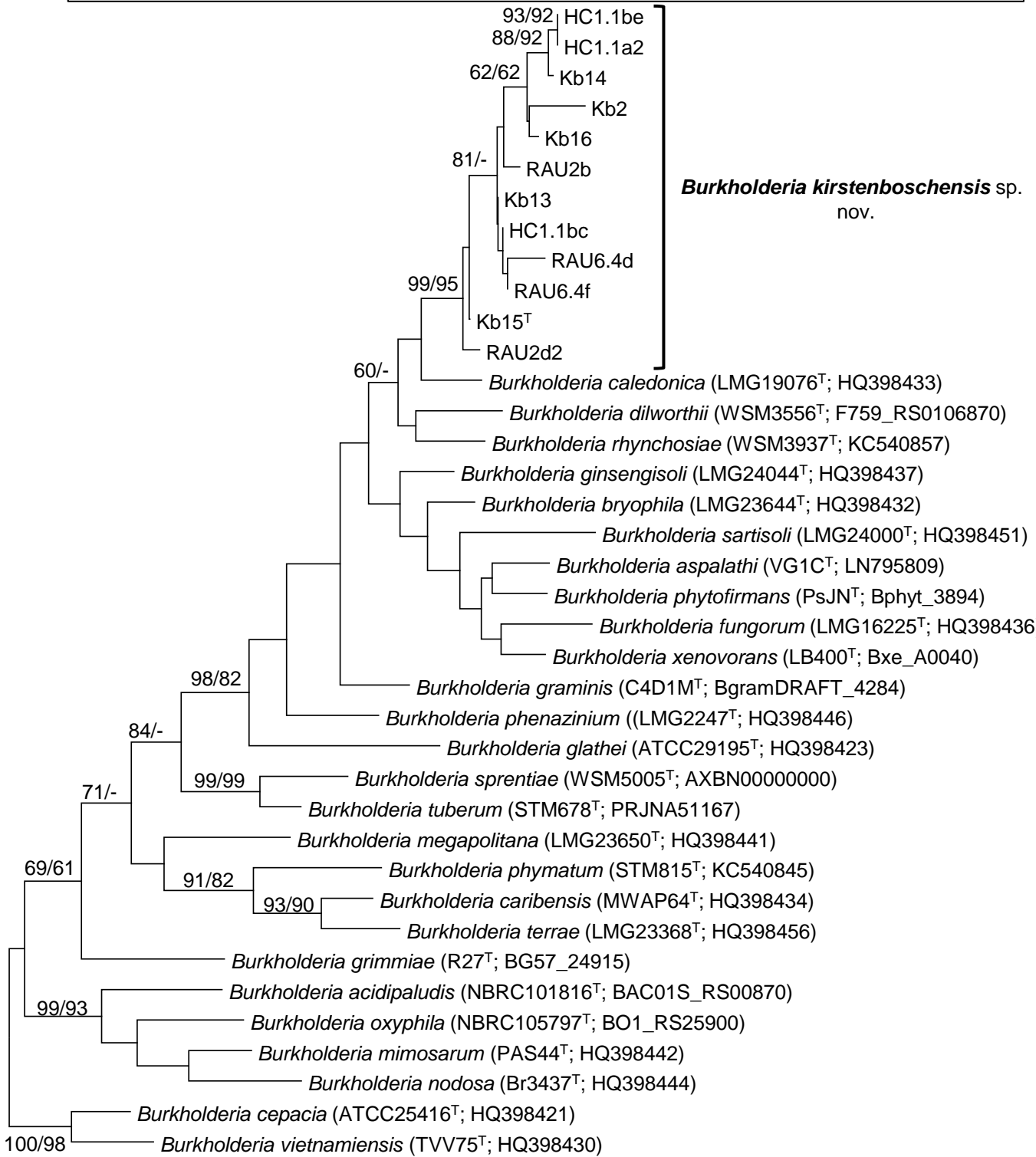


*atpD*

**Supplementary Figure S2.** The single most parsimonious tree inferred from the *atpD* data for *Burkholderia kirstenboschensis* and related *Burkholderia* species. The tree depicted is 774 steps long with consistency, retention and homoplasy indices of 0.26, 0.67 and 0.74, respectively. Bootstrap values ( $\geq 60\%$ ) are indicated at the branches and type strains of the species *Burkholderia cepacia* and *B. vietnamiensis* were used as outgroup. The scale bar indicates the number of nucleotide changes per site. Type strain information and sequence accession numbers are indicated as in Supplementary Figure S1, while accession numbers for the 12 *B. kirstenboschensis* isolates are listed in the text.



10