

FACILITIES FOR THE DEVELOPMENT OF SPORT IN CONJUNCTION WITH THE 2010 SOCCER WORLD CUP:
Sports Administration Building
Karin Harcus

Mentor: De Villiers Du Toit
Study leader: Rudolf van Rensburg

Submitted in fulfillment of part of the requirements for the degree Magister in Architecture (Professional) in the Faculty of Engineering, Built Environment and Information Technology, University of Pretoria. November 2005.

Introduction

The discourse fuses philosophy and architecture through the application of the six concepts of contemporary architecture as identified by Bernard Tschumi. The six concepts are used as the the topic for six chapters of this discourse:

Technologies of defamiliarisation
 Events: the turning point
 Crossprogramming
 Superimposition
 The mediated metropolitan shock
 De-structuring

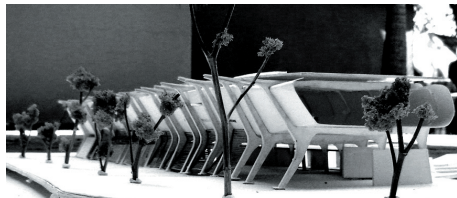
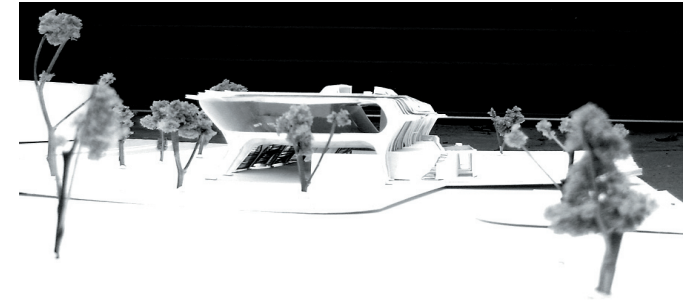
The discourse is a journey of establishing an unfamiliar solution within the intended precinct for the 2010 World Cup Soccer development, in the City of Tshwane. At each level, the study is a critical assessment of the development strategy. Interrogating the quiet, comforting solutions of the conventional community. The purpose of the approach is to ensure that the precinct development is successful at advancing society, through the creation of new infrastructure facilities towards the north and establishing a corridor of development towards the city center.

The development precinct faces numerous challenges. The greatest is that of having no built context on which to reflect. A

diagrammatic context is stipulated by using the guidelines for the real life framework of the 2010 soccer development. The diagram is then enriched by using precedent studies. Ultimately, the discourse aims at creating a language for the project. The building is to contain these clues in order to establish a context for the next generation of buildings.

The language of the building is informed by the study of numerous precedents and more specifically the radical tectonic. The priority given to space and events is enriched by a reconsideration of the constructional and structural modes by which it is achieved. The expressive potential of the building becomes increasingly important.

The project is about facilitating the development of sport. The scope of the facilities include an administration building that hosts the formal events, a centre for the rehabilitation of sports related injuries and a centre for the performance of sport. The development is different from other sporting developments, as it is promoting a healthy lifestyle for all. The facilities use the sports grounds as an extension of its programme, and as public space to integrate the sports related developments into the community and the surrounding urban fabric.



Index

ii
Introduction

iv-vii
List of Illustrations

1.1
Technologies of De-
familiarisation

2.1
Events the Turning Point

3.1
Crossprogramming

4.1
Superimposition

5.1
The Mediated
Metropolitan Shock

6.1
De-Structuring

I
Bibliography

Concept 1 Technologies of Defamiliarisation

The Holm Jordaan Group - illustration by author	1.1 Map Indicating the Rainbow Junction Site in Relation to Johannesburg and the City of Tshwane
The Holm Jordaan Group	1.2 City Scale : Rainbow Junction Site Indicated in the City of Tshwane
Map Studio Street Guide	1.3 Site Scale : Location of the Rainbow Junction Site
The Holm Jordaan Group - illustration by author	1.4 Precinct Scale : Rainbow Junction Framework as Proposed by the Holm Jordaan Group
Cultmatrix cc	1.5 A View Towards the Magaliesberg Taken from the Site
The Holm Jordaan Group - illustration by author	1.6 The Transport Network in the Vicinity of the Rainbow Junction Precinct
Cultmatrix cc	1.7 A Water Furrow on the Farm where the Proposed Rainbow Junction Precinct is Located
The Holm Jordaan Group - illustration by author	1.8 The Transport Network of the Rainbow Junction Precinct
Cultmatrix cc	1.9 Aerial Photograph of the Farm on which the Proposed Rainbow Junction Precinct is located
	1.10 Aerial Photographs of the Farm on which the Rainbow Junction Precinct is Proposed. 1939, 1948, 1958, 1970 and 2000

Concept 1 Events: The Turning Point

Author	2.1 The Eduardo Villa Museum, Pretoria. Previously the Old Merensky Library of the University of Pretoria
Studies in Tectonic Culture: The Poetics of Construction in Nineteenth and Twentieth Century Architecture.[224 & 225]	2.2 Proposal for Parking Towers Surrounding the City Centre of Philadelphia, designed and sketched by Louis Kahn
Author	2.3 A Single Parking Tower, sketched by Louis Kahn
	2.4 City Scale, Precinct Scale and Site Scale of the Project
	2.5 A Map of the City of Tswane Indicating the New Geological Centre
	2.6 Diagram Illustrating the City Grid vs. the Grid of the Precinct
	2.7 & 2.8 Diagrams Illustrating the Relation of the City Centre to Developments in the North
	2.9 Maps Indicating the Result of the Hypothetical Analysis.
City of Tshwane Metropolitan Municipality- graphics by author	2.10 A Hypothetical Analysis of Corridor Development Between the CBD and the North of the City of Tshwane
	2.11 Aerial Photograph of the Rainbow Junction Precinct Illustrating 'Lost Space'
	2.12 Aerial Photograph of the Proposed Rainbow Junction Precinct Layout Superimposed on the Current Farm
Author	2.13 Diagram Illustrating Corridor Development Between the CBD and Development in the North
	2.14 A Diagram of the Site

Concept 3 Crossprogramming

Author	3.1 Phase Two of the Proposed Development Framework
The Holm Jordaan Group - illustration by author	3.2 Layout of the Rainbow Junction Precinct as Proposed by the Holm Jordaan Group
Author	3.3 A Diagrammatic Context of the Rainbow Junction Development
	3.4 A Model of the Postulated Context of the Rainbow Junction Development
	3.5 The Immediate Context of the Site
	3.6 Site Perception
	3.7 Hard vs. Soft Surfaces
	3.8 The Site in Relation to the Green/ Public Spaces
	3.9 The Soft Edge Response Between the Building and the Pedestrian Walkway
	3.10 Diagram Indicating the Hard Edge and the Soft Edge

Concept 3 Crossprogramming (continue...)

Liani van der Westhuizen	3.11 The Walter Sisulu Square of Dedication and the Immediate Context of Kliptown
Annette LeCuyer in Radical Tectonics [16]	3.12 The 1972 Olympic Stadium, Munich
Author	3.13 Conceptual Layout of the Sports Development Facilities
	3.14 Conceptual Street Elevation
Studies in Tectonic Culture: The Poetics of Construction in Nineteenth and Twentieth Century Architecture.[224 & 225]	3.15 Alvar Aalto's Saynatsalo Town Hall Stairs to the Council Chamber
Author	3.16 Plan and Sections of Alvar Aalto's Saynatsalo Town Hall, 1949-1952
	3.17 Crossprogramming on the Ground Floor
	3.18 Crossprogramming on the First Floor
Hisao Suzuki in Radical Tectonics [39]	1 Archery Range, Vall de Hebrón, Barcelona 1989 /1992
[35]	2 Igualada Cemetary Park, Barcelona 1985
[39]	3 Archery Range, Vall de Hebrón, Barcelona
Domus 838 June 2001 [56]	4 The Zenith Convention Centre, Rouen
Domus 747 March 1993 [42]	5 KunstHal, Rotterdam, The Netherlands
Barbara Burg	6 Oriente Station, Lisbon, Porto
Christian Richters in Assemblage 34 December 1997 [95]	7 Villa VPRO, Hilversum 1993-1997
The New Spanish Architecture [158]	8 Hostalets Civic Centre, Barcelona 1986/1992
Domus 800 January 1998 [42]	9 Educatorium, Utrecht, The Netherlands
Domus 881 May 2005 [49]	10 Casa da Música, Porto

Concept 4 Superimposition

Author	4.1 Immediate Context of the Site
	4.2 Superimposed Photograph of a Sectional Model
The New Spanish Architecture [159]	4.3 Hostalets Civic Centre, Barcelona by Enric Miralles and Carme Pinos
Author	4.4 Conceptual Ground and First Floor Plans Used to Postulate the Possibility of Unexpected Events Occuring
	4.5 Final Ground and First floor Plans Demonstrating Events within the Sports Administration Building

Concept 5 The Mediated Metropolitan Shock

Clarity Coverdale Fury Agency	5.1 Mothers Against Drunk Driving I
Levine Huntley Vick & Beaver	5.2 Public Services Message
Clarity Coverdale Fury Agency	5.3 Mothers against Drunk Driving II
Benjamins van Doorn Euro RSCG	5.4 Vrij Uit
Author	5.5 Sketches of Miralles and Pino's Archery Range
	5.6 Wider Context of the Site
	5.7 Study Area
	5.8 Immediate Context of the Site
	5.9 The Site
	5.10 Conceptual Layout of the Facilities and Sports Administration Building

Concept 5 The Mediated Metropolitan Shock (continue...)

Author	5.11 Sketches of Precedents of Enric Miralles and Wiel Arets 5.12 Intergration of the Sports Facilities into the Landscape 5.13 The Sports Development Facilities in relation to the Natural and Man Made Green Spaces 5.14 Conceptual Sketch of the Sports Administration Building and the Immediate Context
Domus 800 January 1998 [42]	5.15 & 5.16 Educatorium Designed by Rem Koolhaas (OMA), Utrecht, the Netherlands
Architecture 1225 March 1998 [137]	5.17 Educatorium Designed by Rem Koolhaas (OMA), Utrecht, the Netherlands
Christian Richters in Assemblage 34 December 1997 [95]	5.18, 5.19 & 5.20 Villa VPRO Designed by MVRDV, Hilversium
Author	5.21, 5.22 & 5.23 First Conceptual Model 5.24 Perception of Street Elevation 5.25 Second Conceptual Model 5.26 Initial South-Western Elevation 5.27 Initial Longitudinal Section 5.28 South-West Elevation 5.29 Cross section
The New Spanish Architecture [158]	5.30 Hostalets Civic Centre, Barcelona, Designed by Enric Miralles and Carme Pinos
Author	5.31 View from the South Towards the Main Entrance and the Sloping Auditorium 5.32 First Cross Section of the Sports Administration Building 5.33 Advanced Cross Section of the Sports Administration Building 5.34 View from the Sports Grounds Towards the Restaurant Area

Concept 6 De-Structuring

Craig Thompson & author during discussions on the structure	6.1 Sketches of the Structure 6.2 Sketches of the Structure
Hisao Suzuki in Radical Tectonics [40 & 41]	6.3 Igualada Cemetary Park, Barcelona 1985
Barbara Burg	6.4 Santiago Calatrava's Oriente Station, Lisbon, Portu
Author	6.5 Conceptual Layout of Steel Frames 6.6 Design Development of the Structural Steel Frame 6.7 Structure of the Building on Ground and First Floor Plans 6.8 Final Ground and First Floor Plans 6.9 Section Illustrating the Structure vs. Open Space of the Building
Barbara Burg	6.10 Sondica Airport, Bilbao, by Santiago Calatrava
Studies in Tectonic Culture: The Poetics of Construction in Nineteenth and Twentieth Century Architecture.[284]	6.11 Sydney Opera House Designed by Jørn Utzon
Barbara Burg	6.12 Milwaukee Art Museum, by Santiago Calatrava
Author	6.13 Rhythm of the Structural Frames 6.14 Diagram indicating the Fire Escapes From the Building 6.15 The Four Components of a Single Structural Steel Frame 6.16 A 2500mm Portion of the In-Situ Concrete Between two Construction Joints 6.17 An Isometric Sketch of the Concrete and Steel Structural Components of the Building 6.18 The End Plates for the Structural Steel Frames 6.19 Sketch of Glass Balustrade on the Main Staircase

Concept 6 De-Structuring (continue...)

Domus 881 May 2005 [49]

Author

- 6.19a The Safety Glass Balustrades on the Stairs of Casa Da Musica, by Rem Koolhaas (OMA)
- 6.20 Rem Koolhaas's (OMA) Casa Da Musica, Porto
- 6.21 Ground Floor Plan with Service Core Indicated
- 6.22 South - East Section
- 6.23 Initial Ground Floor Plan with Services Indicated
- 6.24 Ground Floor Plan with Centralised Service Core
- 6.25 Partial Cross Section Indicating Roof Lights, and Services.
- 6.26 Cross Section Illustrating the Airflow through the Building
- 6.27 Ground Floor Plan
- 6.28 Cross Sectional Diagram
- 6.29 Acoustics of the Auditorium
- 6.30 Rainwater Drainage from the Roof
- 6.31 Roof plan indicating the Water Outlets