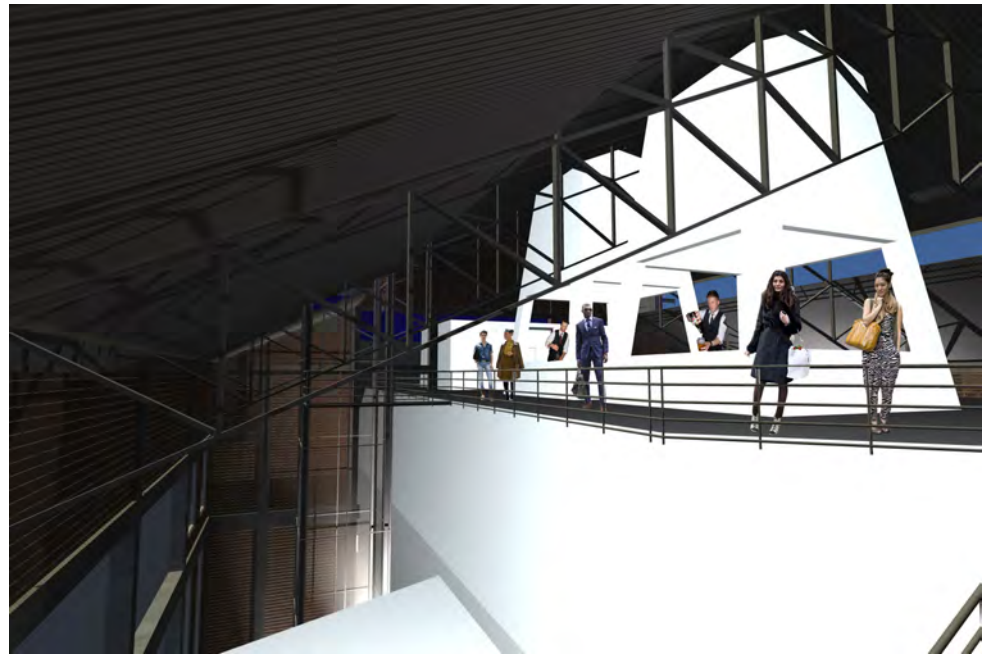




UNIVERSITEIT VAN PRETORIA  
UNIVERSITY OF PRETORIA  
YUNIBESITHI YA PRETORIA

## 7. final drawings

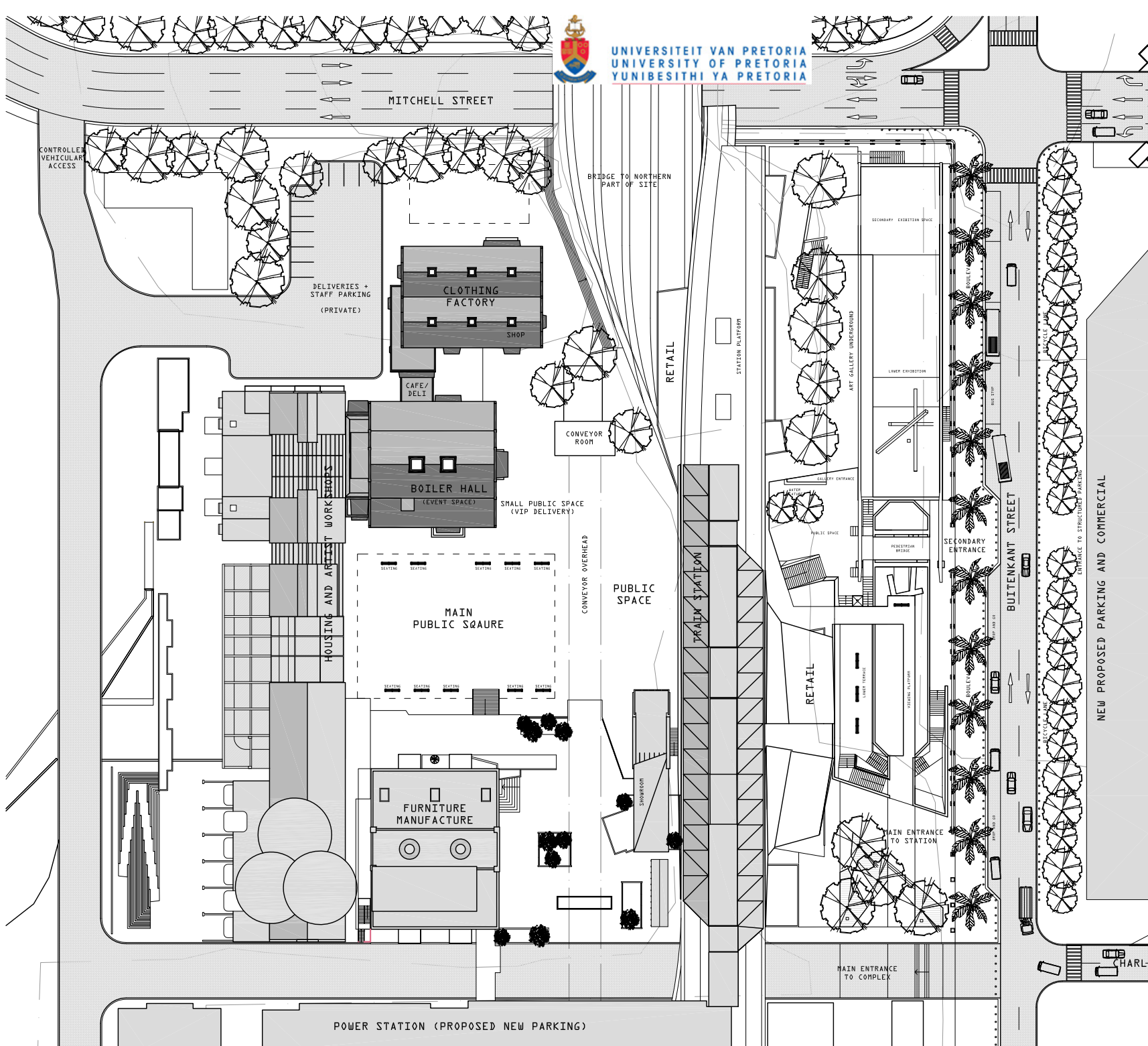


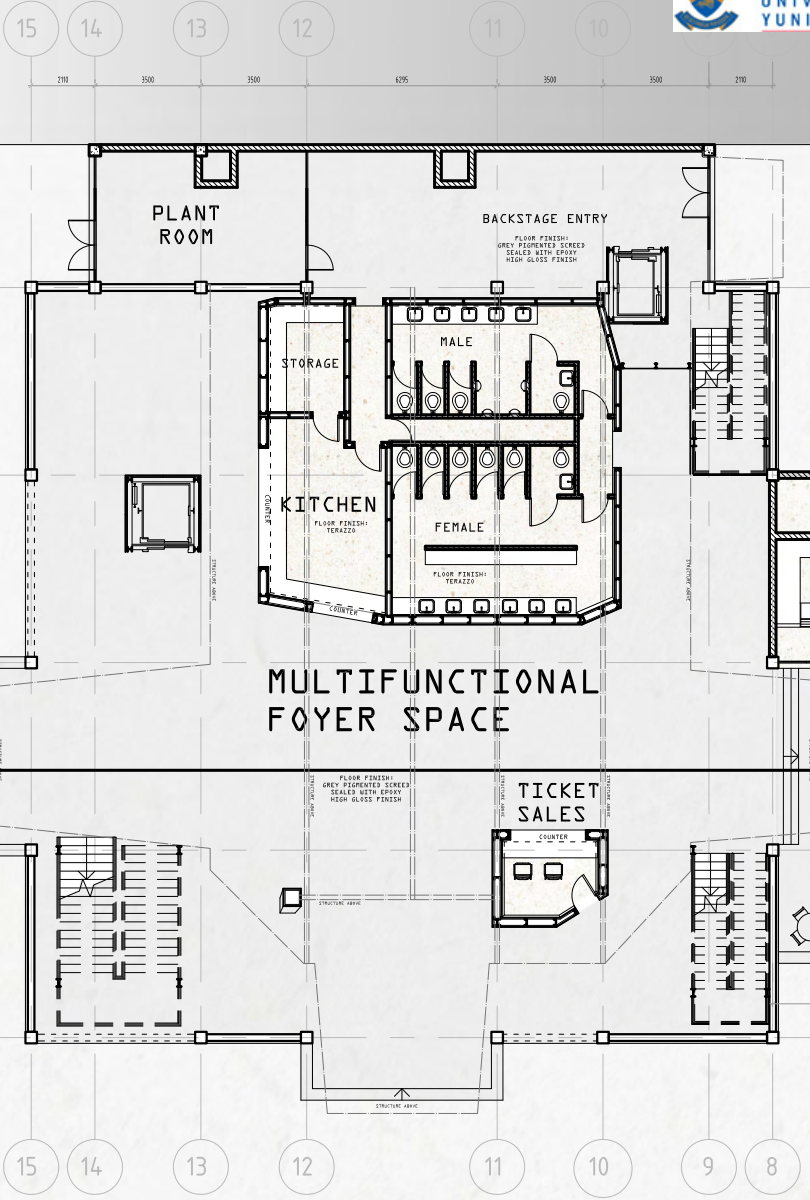
PERSPECTIVES











DELIVERIES FOR EVENTS

DELIVERY AND EXPORT OF MATERIAL

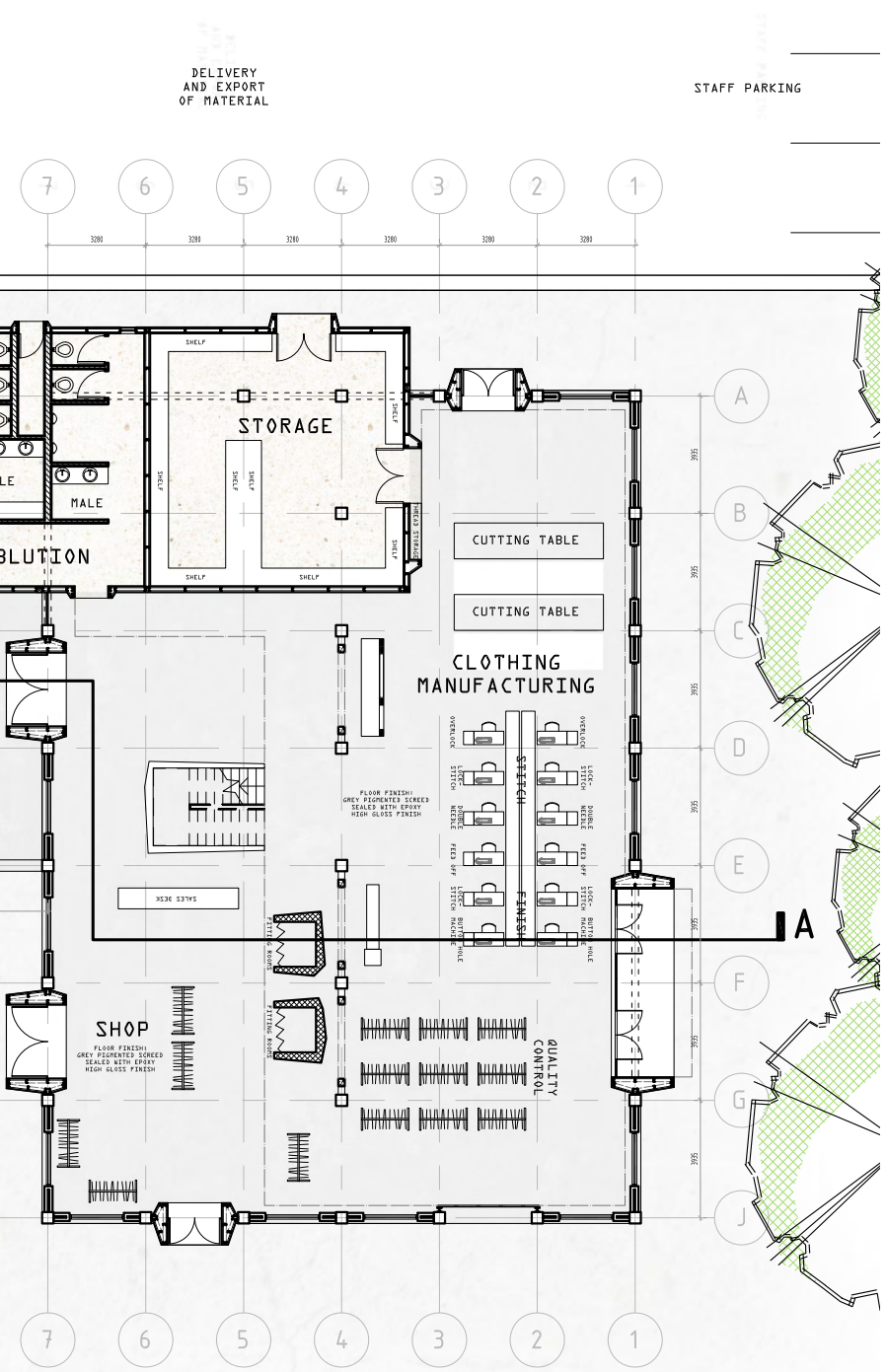
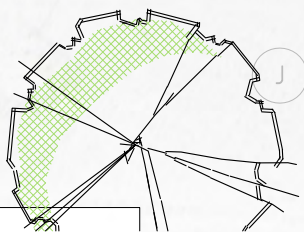
STAFF PARKING

# GROUND FLOOR PLAN

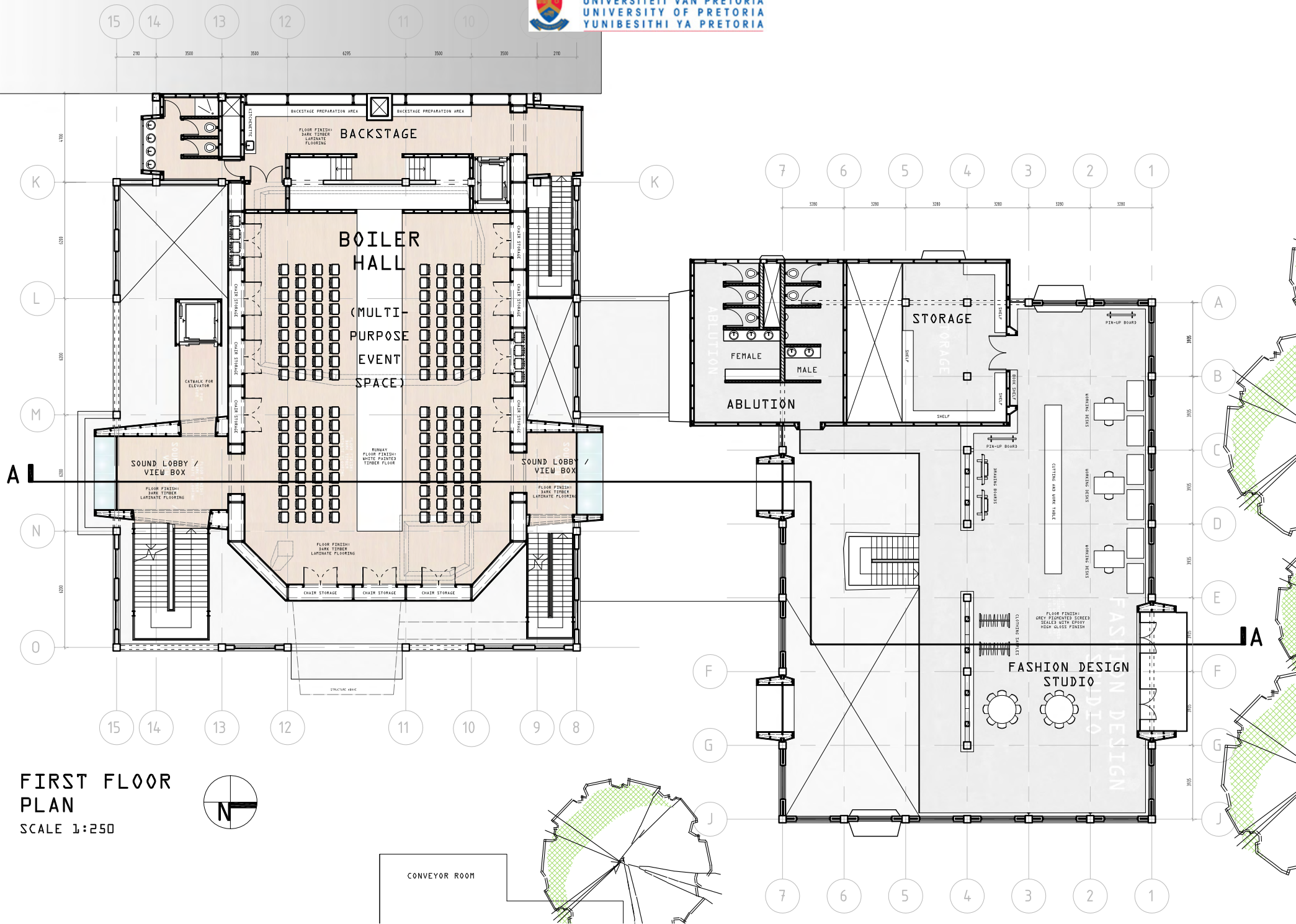
SCALE 1:250



CONVEYOR ROOM

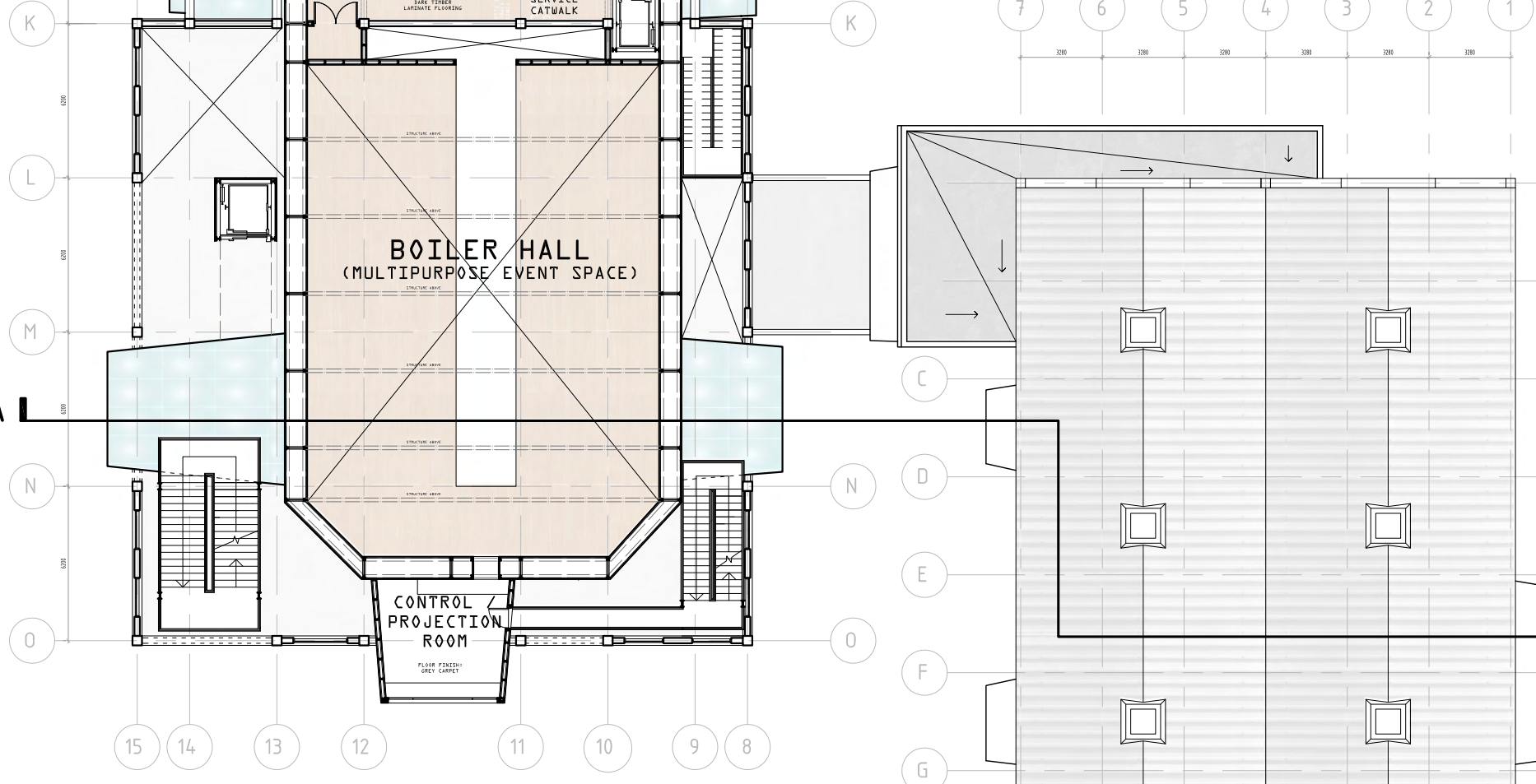
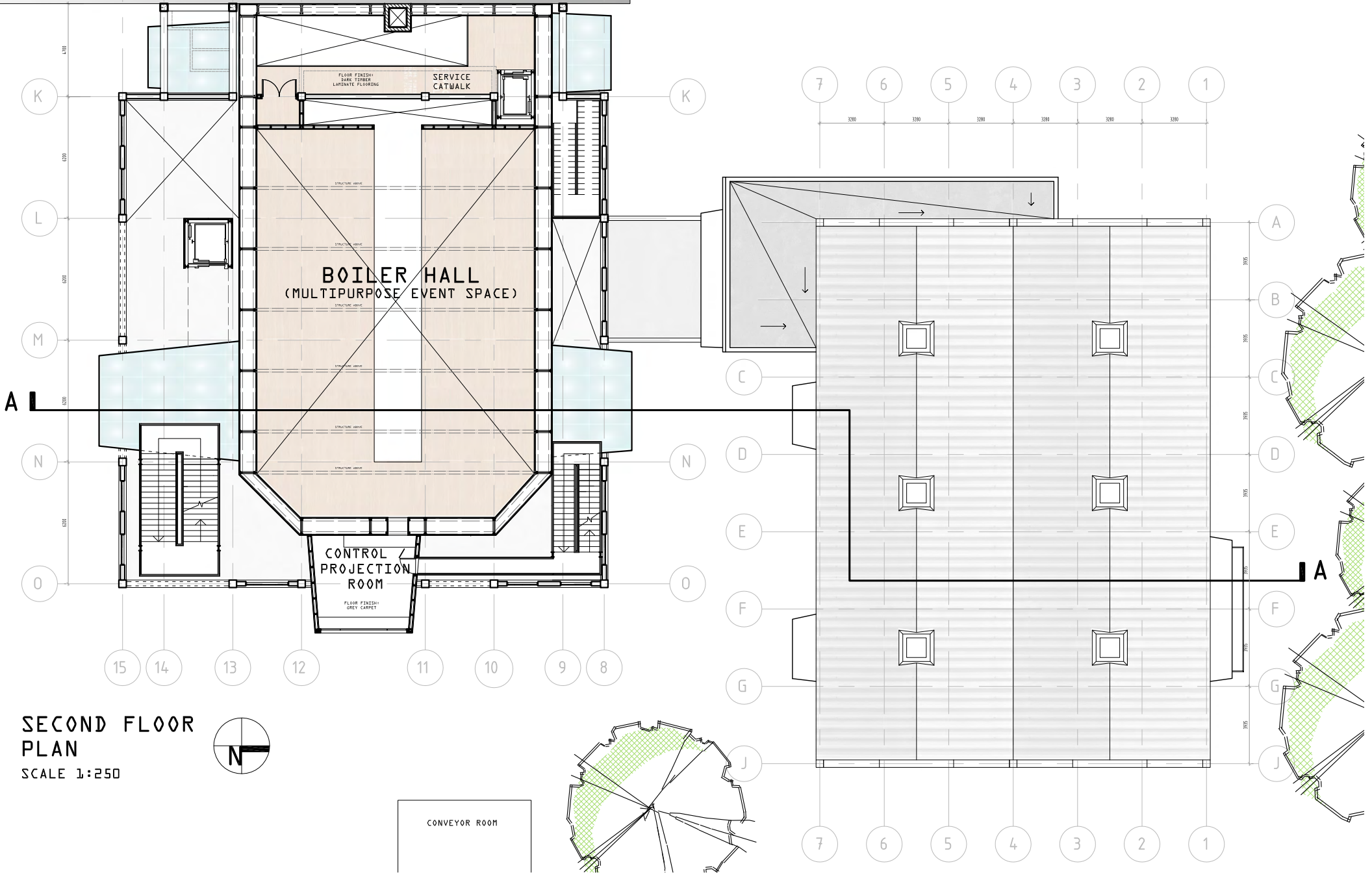




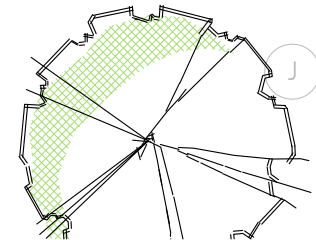


FIRST FLOOR  
PLAN  
SCALE 1:250

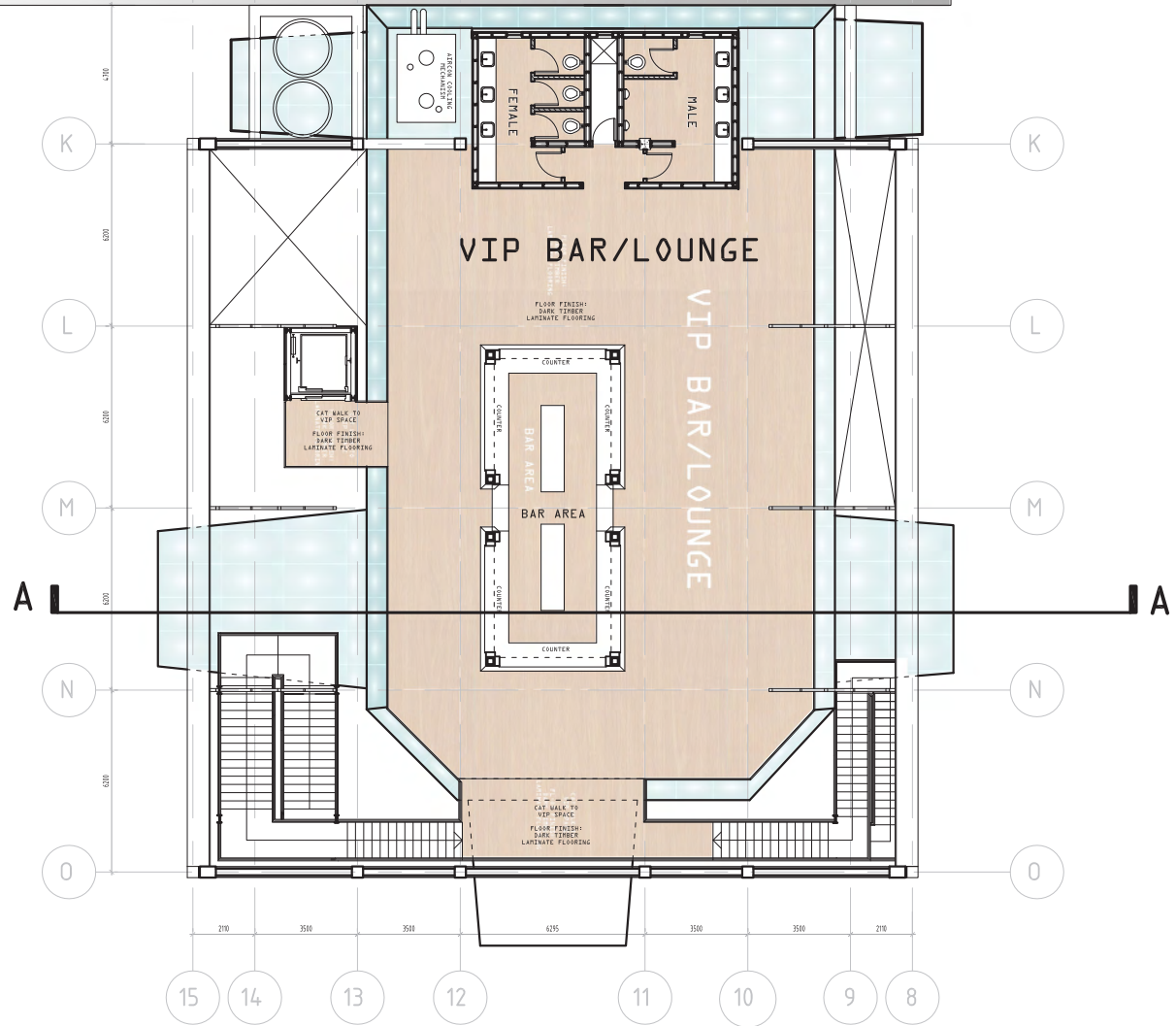




**SECOND FLOOR PLAN**  
SCALE 1:250



PUBLIC SQUARE



**SECOND FLOOR**  
**PLAN**  
 SCALE 1:250



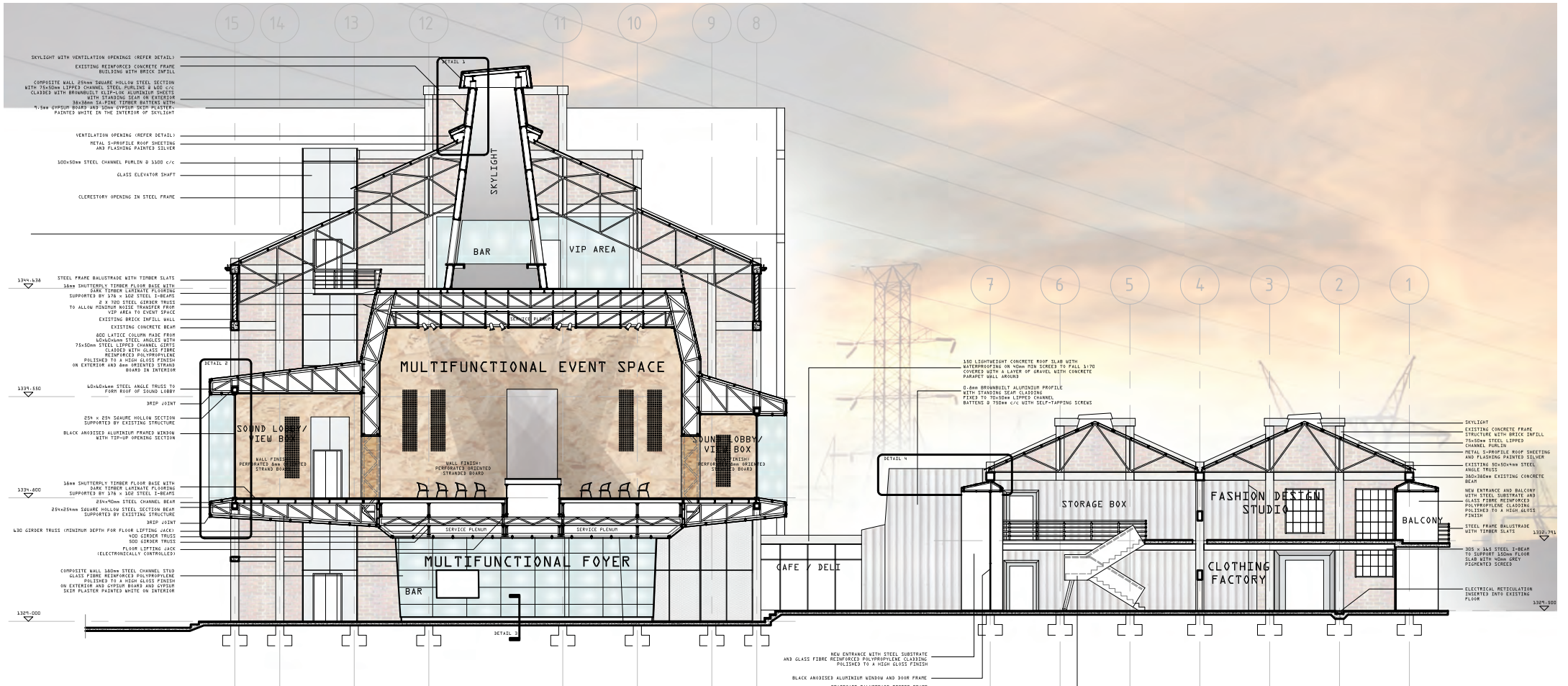




SOUTH ELEVATION  
SCALE 1:250



**EAST ELEVATION**  
SCALE 1:250



SECTION AA  
SCALE 1:250





## NOTES

### WALL CLADDING 1:

75x50mm STEEL LIPPED CHANNEL CLADDING GIRTS @ 600mm c/c

0.8mm BROWN-BUILT ALUMINIUM PROFILE WITH STANDING SEAM FIXED TO LIPPED CHANNEL GIRTS WITH SELF-TAPPING SCREW

### WALL CLADDING 2:

38x38mm TIMBER BATTENS FIXED TO STRUCTURE WITH SELF TAPPING SCREWS @ 600 c/c

9.5mm GYPSUM BOARD NAILED TO TIMBER BATTENS

10mm PLASTER TO GYPSUM BOARD WALL

### WALL CLADDING 3:

35x65x5mm STEEL T-SECTION FRAME FOR CLADDING PAINTED BLACK WELDED TO STEEL STRUCTURE

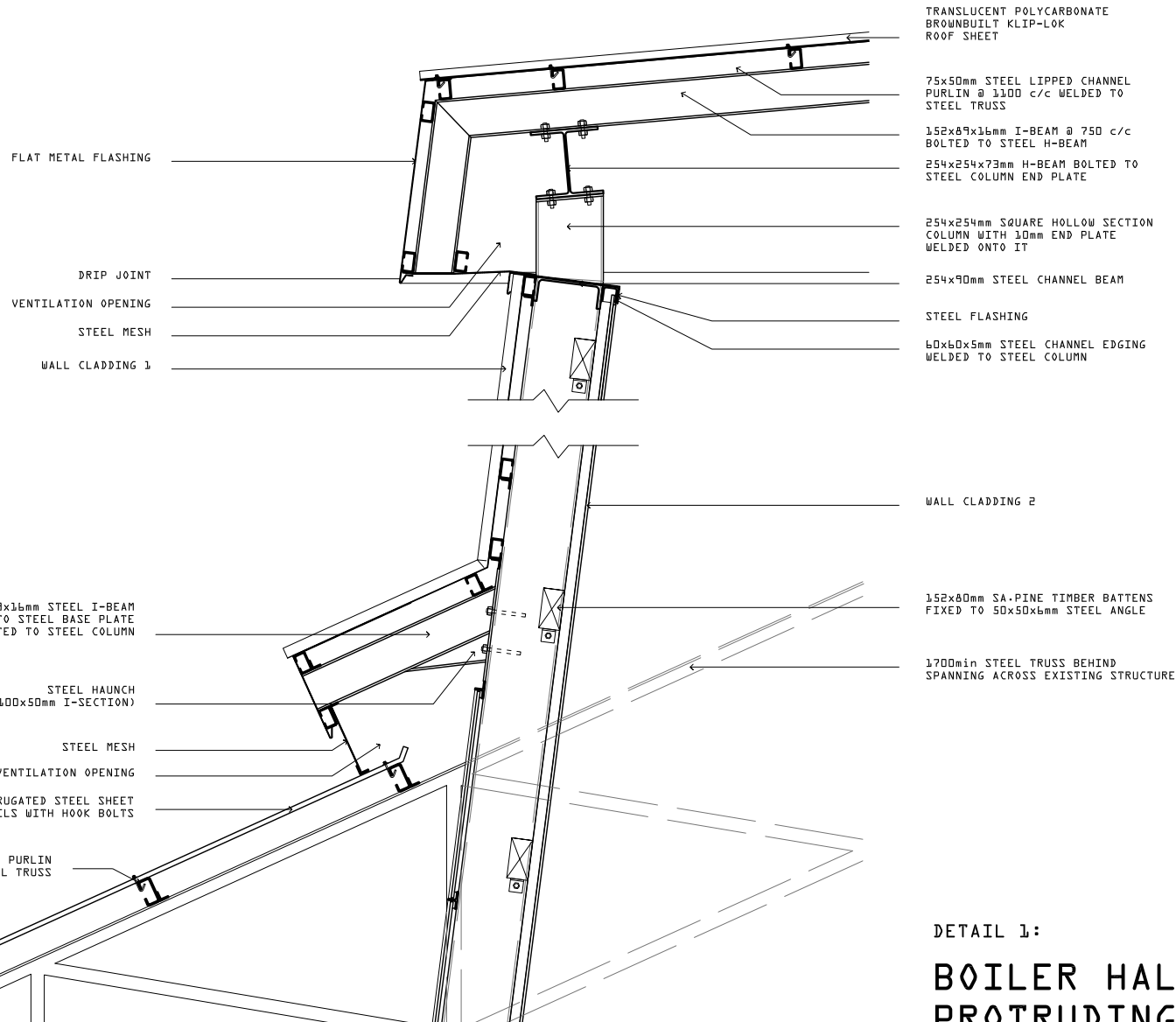
600x900x10mm GLASS FIBRE REINFORCED POLYPROPYLENE WALL CLADDING POLISHED TO A HIGH GLOSS FINISH FIXED WITH BLACK SILICONE SEALANT TO STEEL FRAME

### TREATMENT FOR ALL EXPOSED STEEL MEMBERS:

APPLY ONE COAT OF ZINC PHOSPHATE PRIMER COMPLYING WITH SANS 1319

APPLY ONE UNIVERSAL UNDERCOAT COMPLYING WITH SANS 681 GRADE 1

FINISH WITH TWO COATS ALKYD ENAMEL PAINT COMPLYING WITH SANS 630, TYPE 2, WITH A BLACK GLOSSY FINISH



DETAIL 1:

## BOILER HALL ROOF WITH PROTRUDING SKYLIGHT

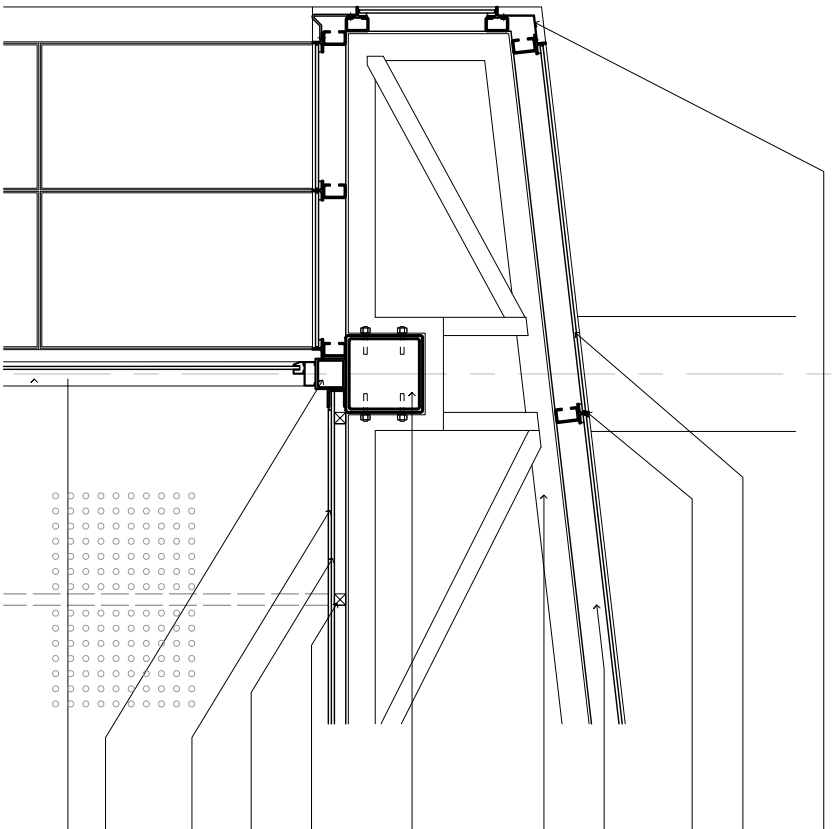
SCALE 1:25



DETAIL 2:

SOUND LOBBY 'BOX'  
PROTRUDING THROUGH  
EXISTING STRUCTURE

SCALE 1:25



3mm FLAT METAL FLASHING

600x900x10mm GLASS FIBRE REINFORCED POLYPROPYLENE WALL CLADDING FINISHED TO A HIGH GLOSS FINISH SEaled WITH STRUCTURAL SILICONE SEALANT TO STEEL FRAME

35x45x5mm STEEL T-SECTION FRAME FOR CLADDING PAINTED BLACK WELDED TO STEEL STRUCTURE

75x90mm LIPPED STEEL CHANNEL PURLIN @ 800 C/C WELDED TO STEEL TRUSS

60x40x6mm STEEL ANGLE TRUSS BOLTED TO STEEL BEAM TO FORM ROOF OF SOUND LOBBY

254 x 254 SQUARE HOLLOW STEEL SECTION REINFORCED WITH 4 BARS BOLTED TO EXISTING STRUCTURE PAINTED BLACK

30x30mm SA-PINE TIMBER BATTENS FIXED TO TRUSS WITH SELF TAPPING SCREWS

9.5mm GYPSUM BOARD NAILED TO TIMBER BATTENS

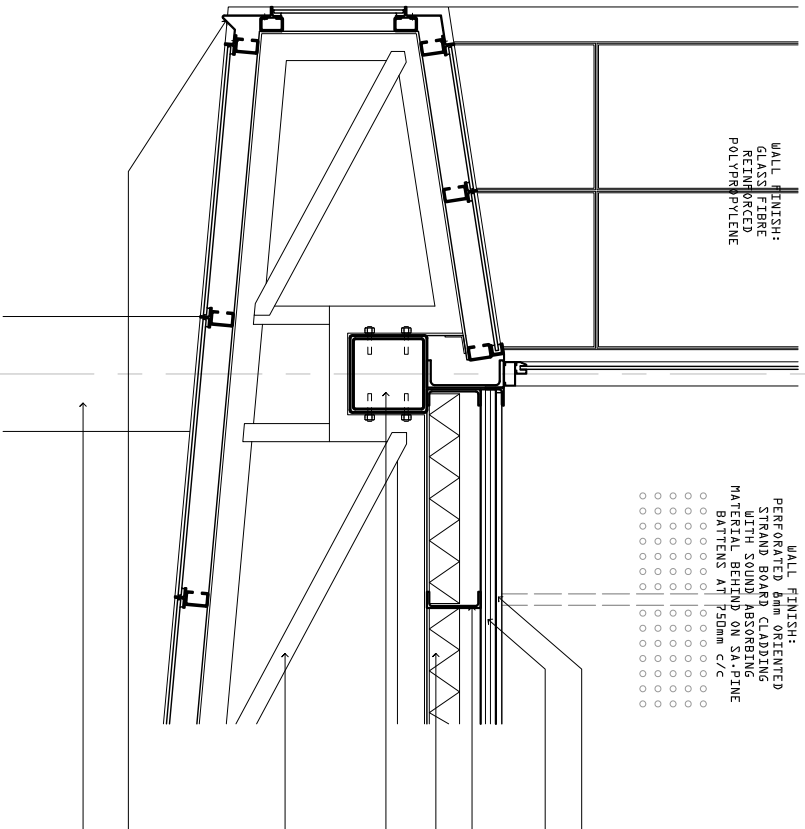
10mm GYPSUM SKIN PLASTER TO GYPSUM BOARD CEILING

100x100mm SQUARE HOLLOW SECTION STEEL SPACER WELDED TO STEEL BEAM

3900x4700mm BLACK ANODISED ALUMINIUM FRAMED WINDOW WITH TIP UP OPENING SECTION

WALL FINISH:  
GLASS FIBRE  
REINFORCED  
POLYPROPYLENE

WALL FINISH:  
PERFORATED 9mm ORIENTED  
STRAND BOARD CLADDING  
WITH SOUND ABSORBING  
MATERIAL BEHIND ON SA-PINE  
BATTENS AT 750mm C/C



9mm LAMINATED TIMBER FLOORING

50mm SHUTTERPLY SOLID FLOOR BASE SCREWED TO STEEL CHANNEL FLOOR BEAM

100x70mm STEEL CHANNEL FLOOR BEAM

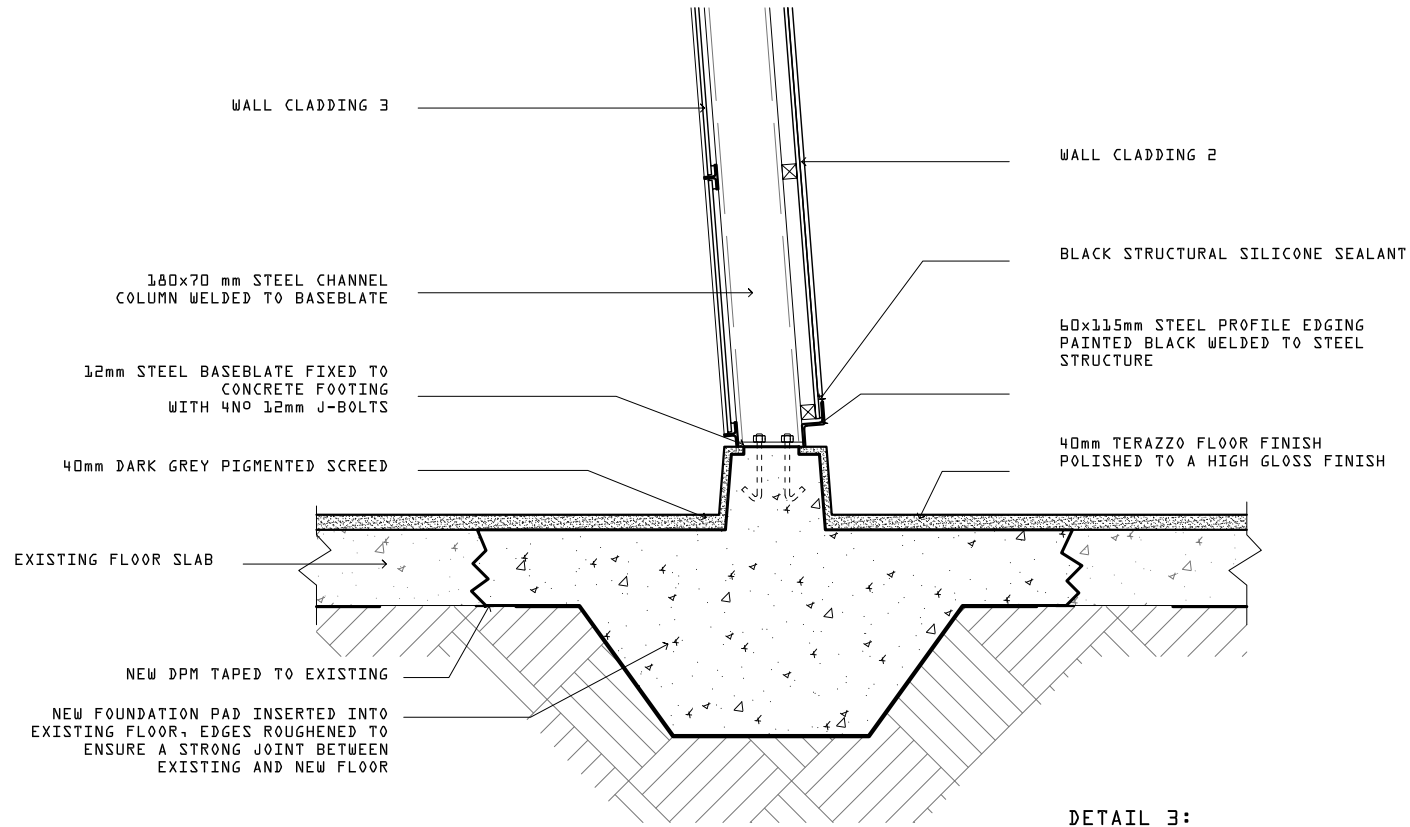
100mm INSULVER CAVITYBATT SOUND/BLACK SOUND INSULATION WITH 500g SOUND RATING

254 x 254 SQUARE HOLLOW SECTION STEEL REINFORCED WITH 4 BARS AND BOLTED TO EXISTING STRUCTURE

60x40x6mm STEEL ANGLE TRUSS TO FORM FLOOR OF SOUND LOBBY BOLTED TO STEEL BEAM

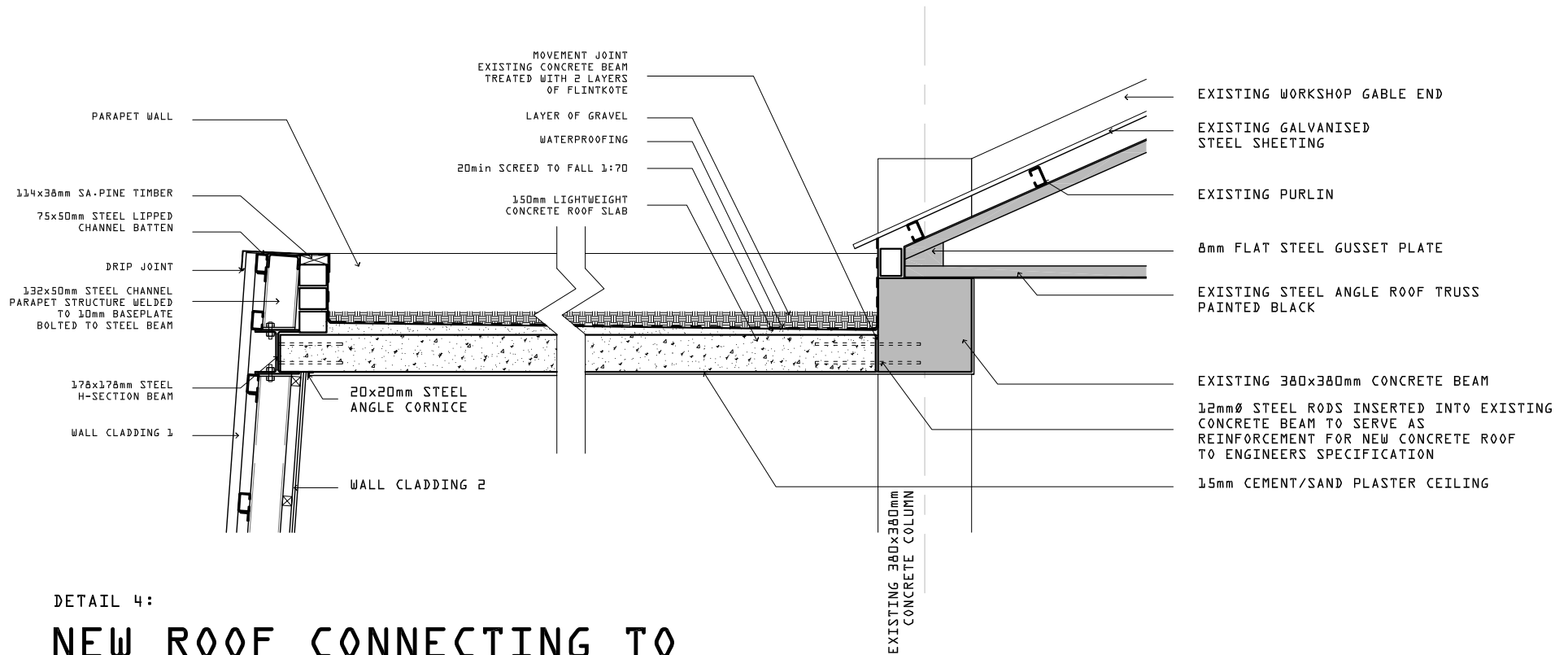
FLAT METAL FLASHING  
DRIP EDGE

300x300mm EXISTING CONCRETE COLUMN



DETAIL 3:  
**WALL FOOTING**  
SCALE 1:20

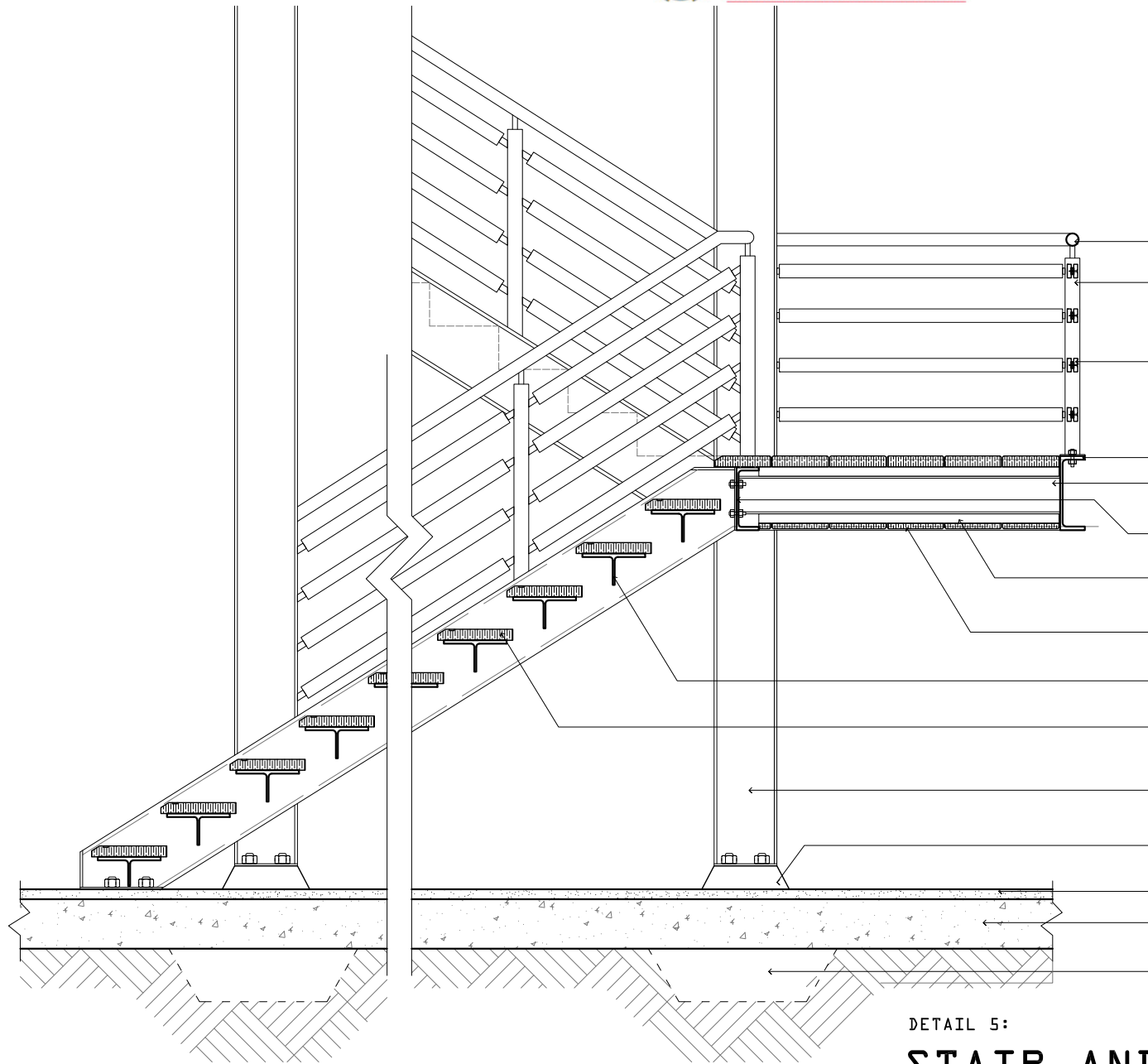




DETAIL 4:

# NEW ROOF CONNECTING TO EXISTING BUILDING

SCALE 1:25



- 50mmØ CIRCULAR STAINLESS STEEL HOLLOW SECTION HANDRAIL
- 900mm BALUSTRADE WITH 60x60x800mm SQUARE HOLLOW STEEL SECTION BALUSTER WELDED TO 6mm BASE PLATE AND BOLTED TO STEEL CHANNEL
- 10x25mm FLAT METAL STRIP WELDED TO BALUSTERS ON EACH END, COVERED ON BOTH SIDES WITH A 55x16mm TEAK TIMBER STRIP COACHED SCREWD TO STEEL
- 300x100 STEEL CHANNEL FLOOR EDGE WELDED TO 10mm END PLATE BOLTED TO STEEL COLUMNS
- 152x89x16 mm I-SECTION FLOOR BEAM WELDED TO STEEL CHANNELS ON BOTH ENDS
- 254x90mm STEEL CHANNEL BOLTED TO STEEL COLUMNS
- 36x38mm SA-PINE TIMBER BATTENS FIXED TO FLOOR BEAM WITH SELF-TAPPING SCREWS @ 750 c/c
- 22mm TEAK CEILING NAILED TO TIMBER BATTENS SEALED WITH RUBIO MONOCOAT OIL
- 93 x 254 STRUCTURAL T-SECTION (CUT FROM 254 x 254 x 73 I-SECTION)
- 304x44 TEAK STAIR TREAD WITH CHAMFERED EDGE SEALED WITH RUBIO MONOCOAT OIL, 1.5mm RUBBER NON-SLIP STRIP ON TOP
- 254x254 H-SECTION COLUMN WELDED TO END PLATE AND BOLTED TO CONCRETE FOOTING WITH J-BOLT
- 100mm EXTRUDED CONCRETE FOOTING
- 40mm DARK GREY PIGMENTED SCREED
- EXISTING FLOOR SLAB
- NEW FOUNDATION

DETAIL 5:

# STAIR AND BALUSTRADE DETAIL

SCALE 1:25