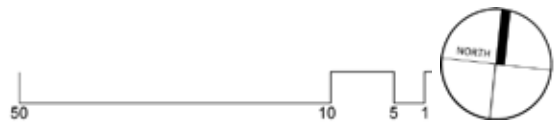


DESIGN DRAWINGS **06**

Fig. 6.3 (Image on next page) Aerial Image showing intervention in context



Nolli Block Plan

Showing extent of publicly accessible space



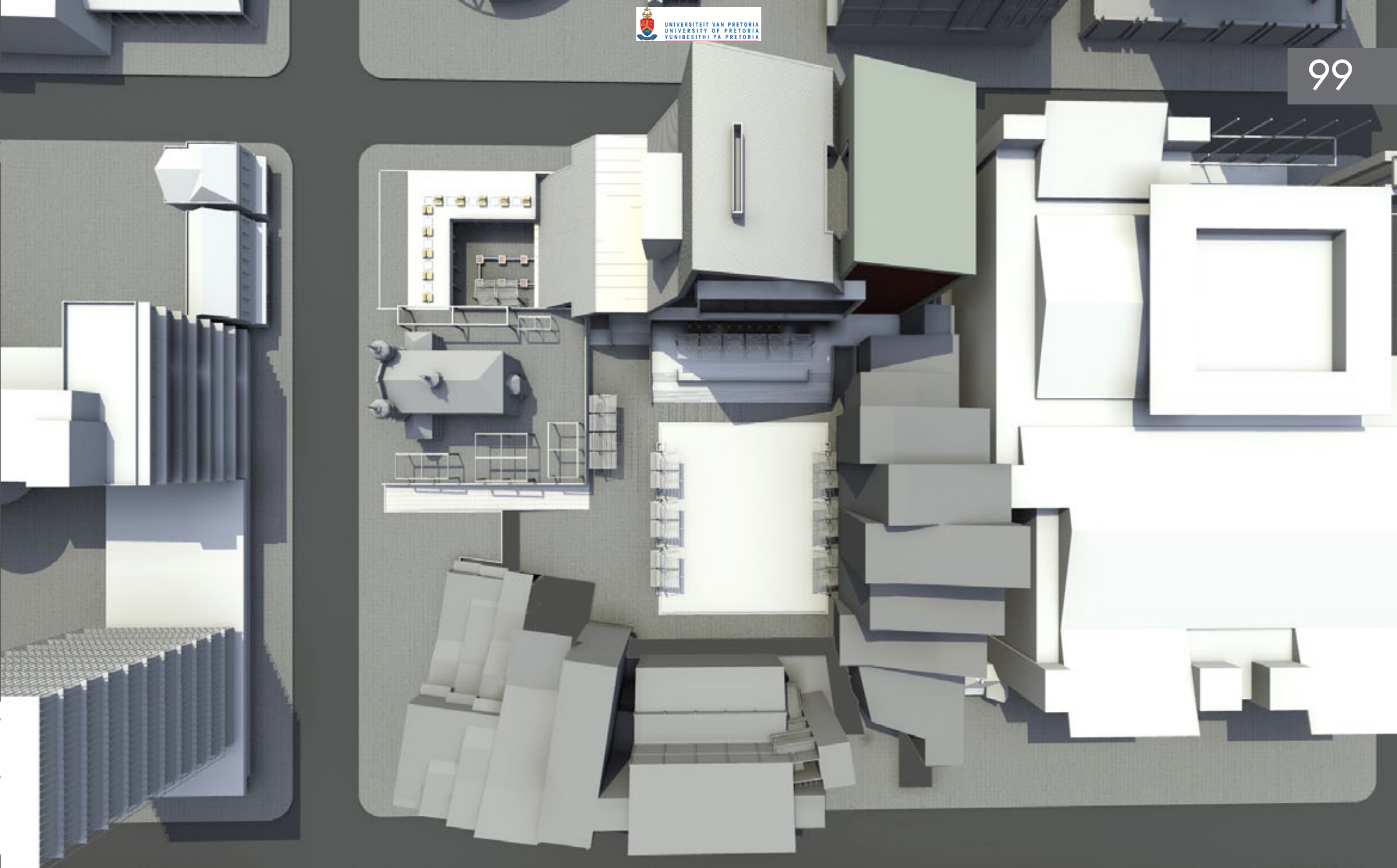




Fig. 6.4 Perspective showing restaurant and rest space below natural ground

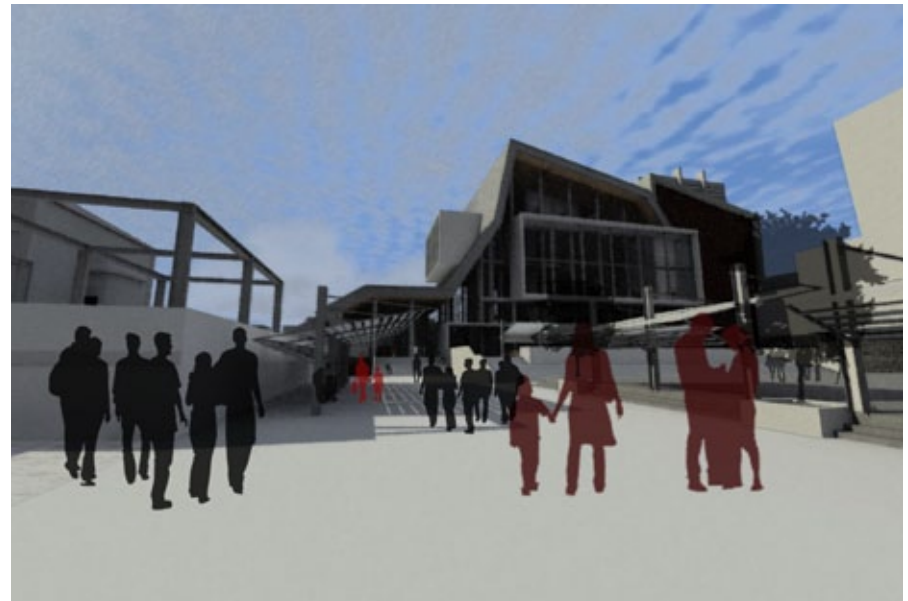
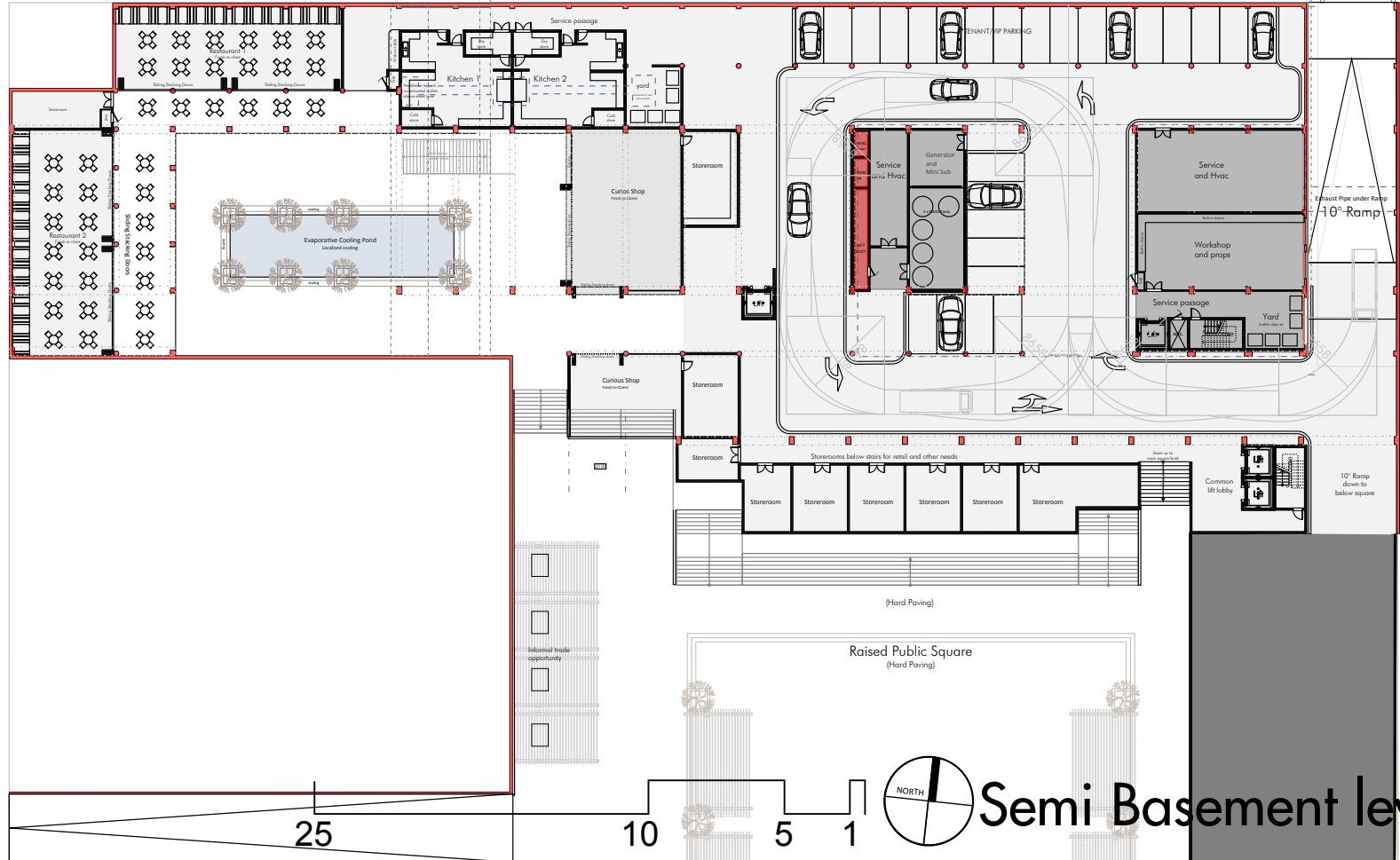


Fig. 6.5 Perspective showing public square and shaded areas adjacent to Synagogue

STRUBEN STREET →

PAUL KRUGER STREET ↕



Semi Basement level

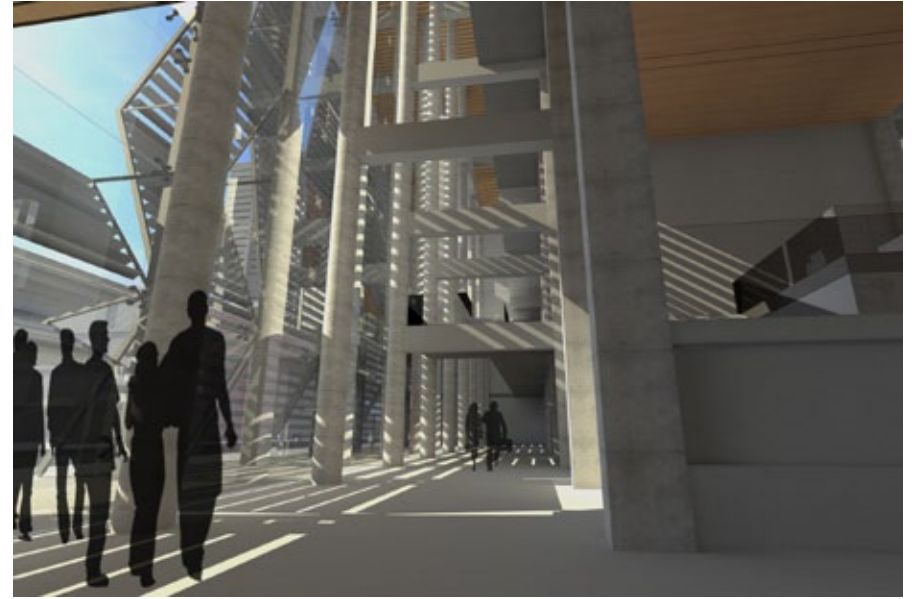


Fig. 6.7 Perspective showing retail arcade and glass curtain wall shaded by external louvres



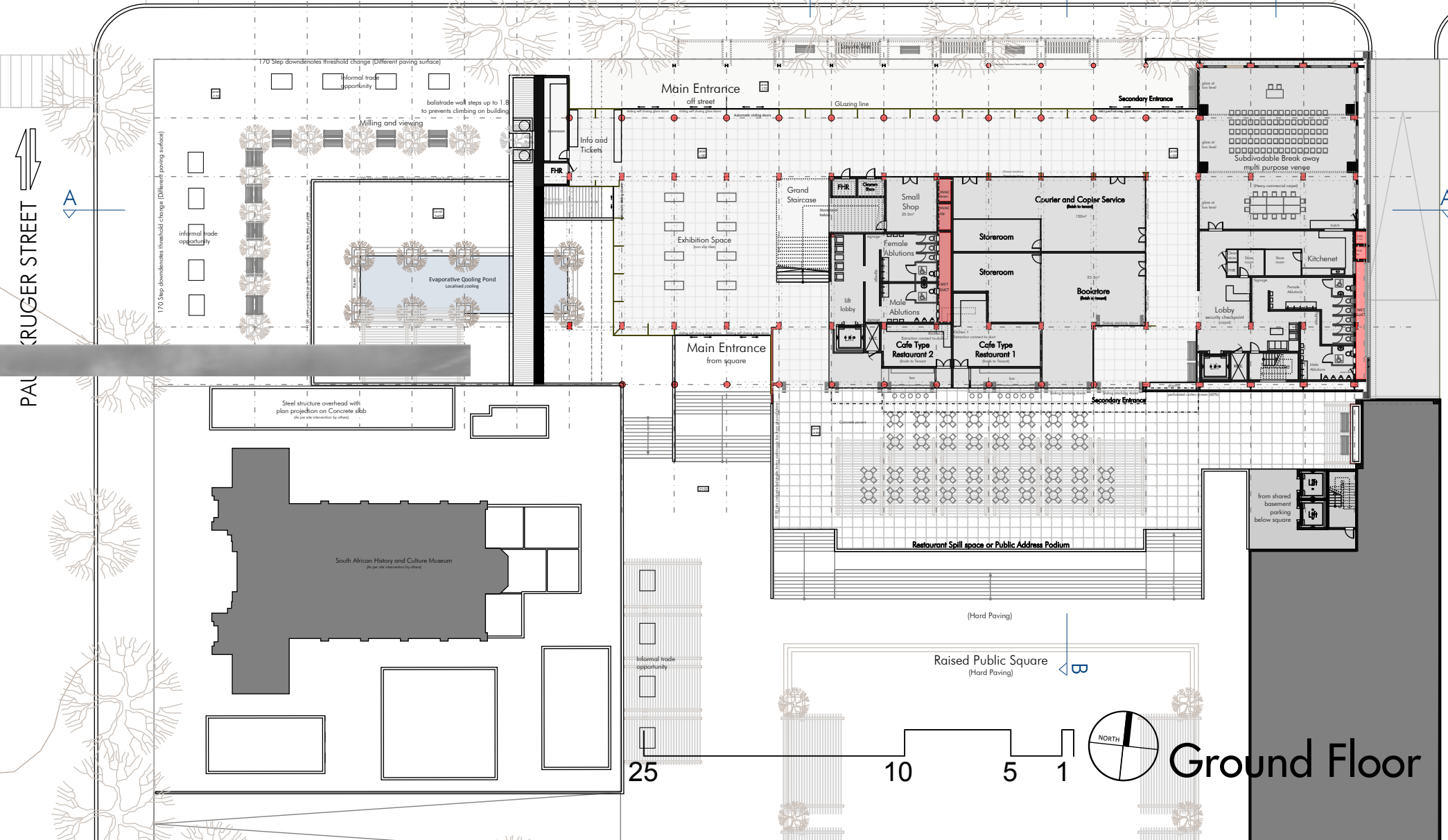
Fig. 6.8 Perspective showing main entrance lobby and exhibition space as mediation between street and square on ground floor

STRUBEN STREET →

103

PAUL KRUGER STREET ←

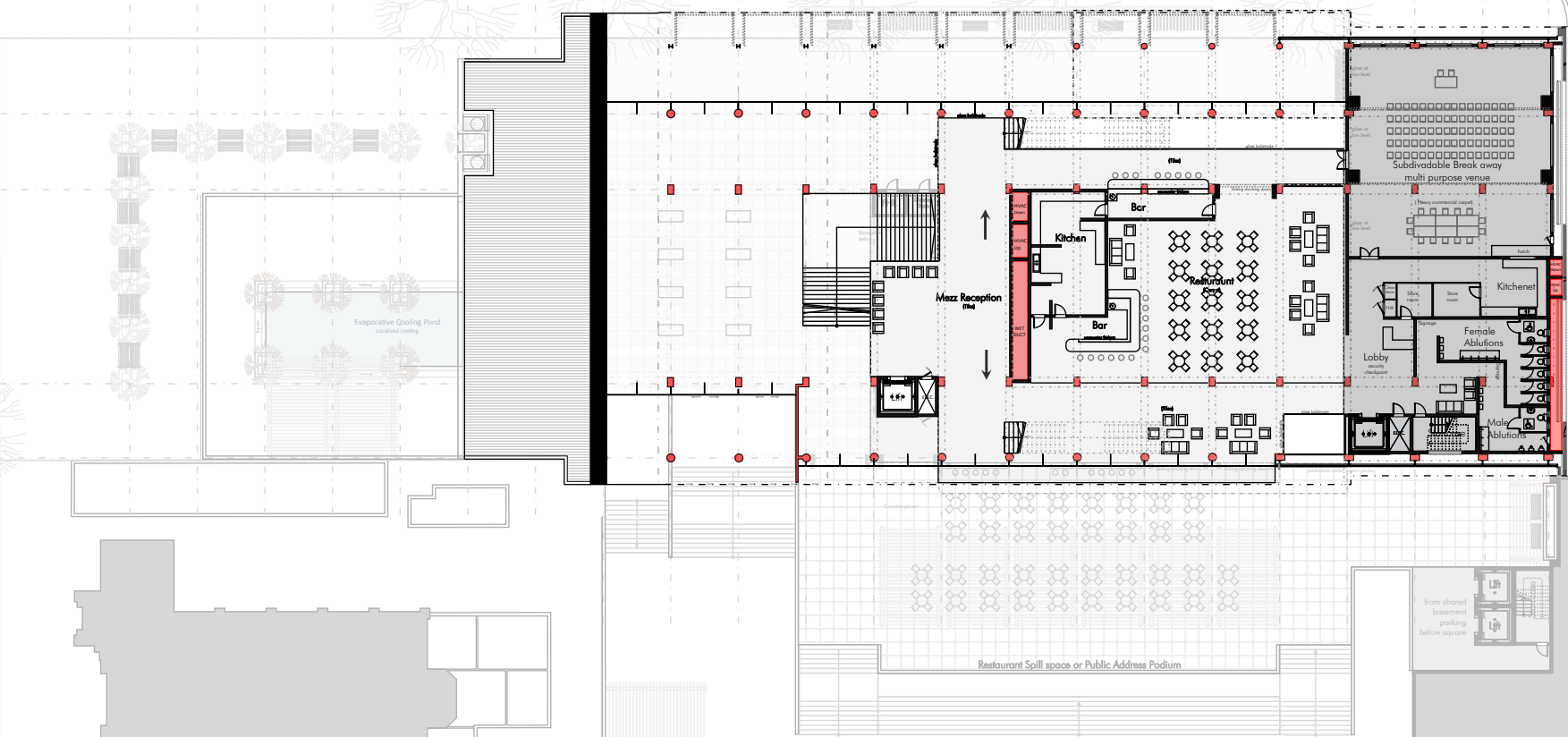
National Library B
View to Square B



Ground Floor

STRUBEN STREET →

← PAUL KRUGER STREET

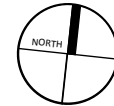


25

10

5

1

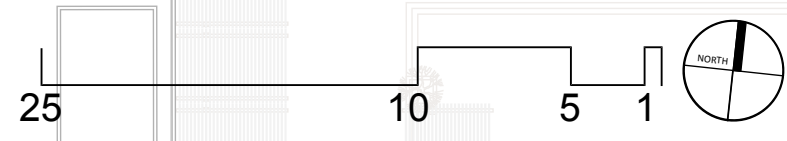
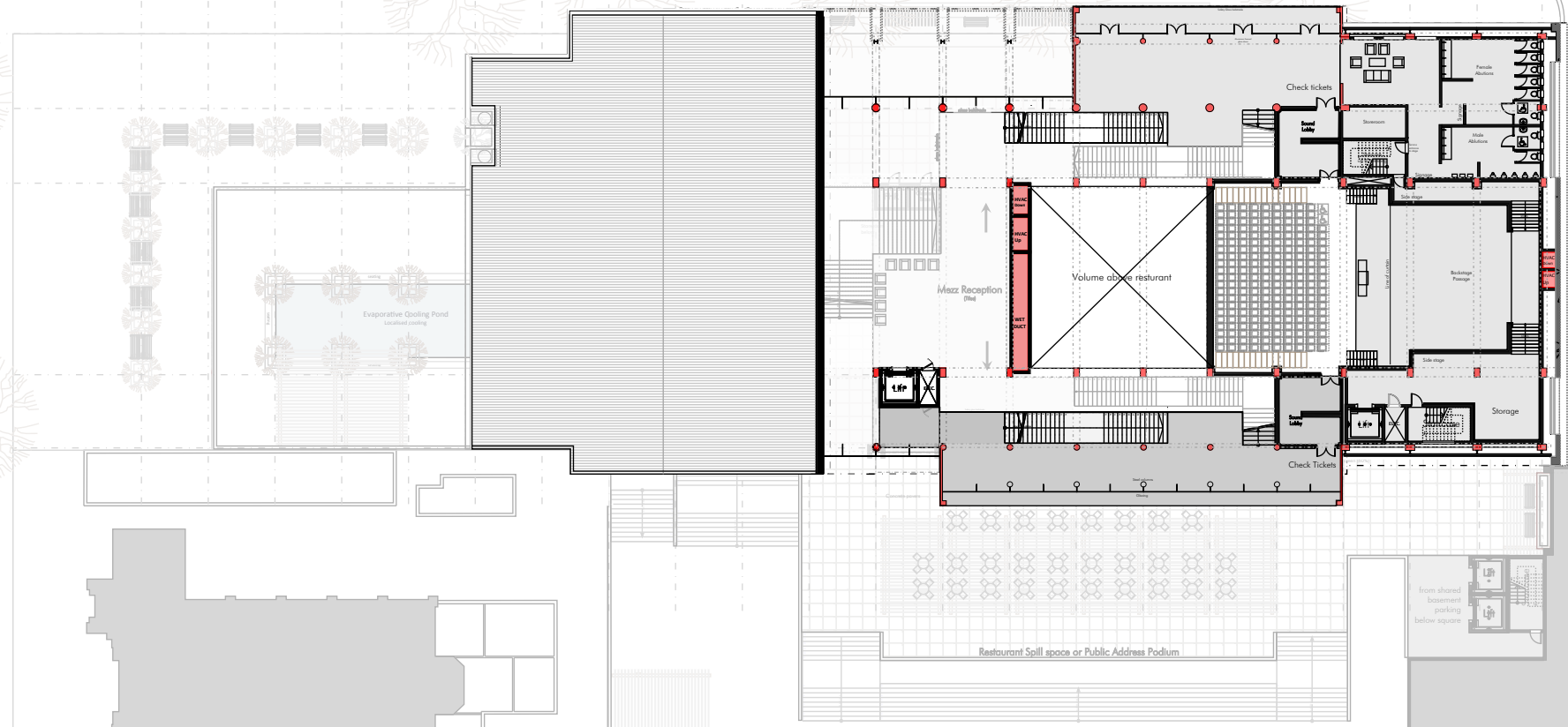


Mezzanine Level

National Library & View to Squares R

STRUBEN STREET →

PAUL KRUGER STREET ↕



Auditorium Lobby

from shared
basement
parking
below square



Fig. 6.12 Perspective showing
auditorium lobby space

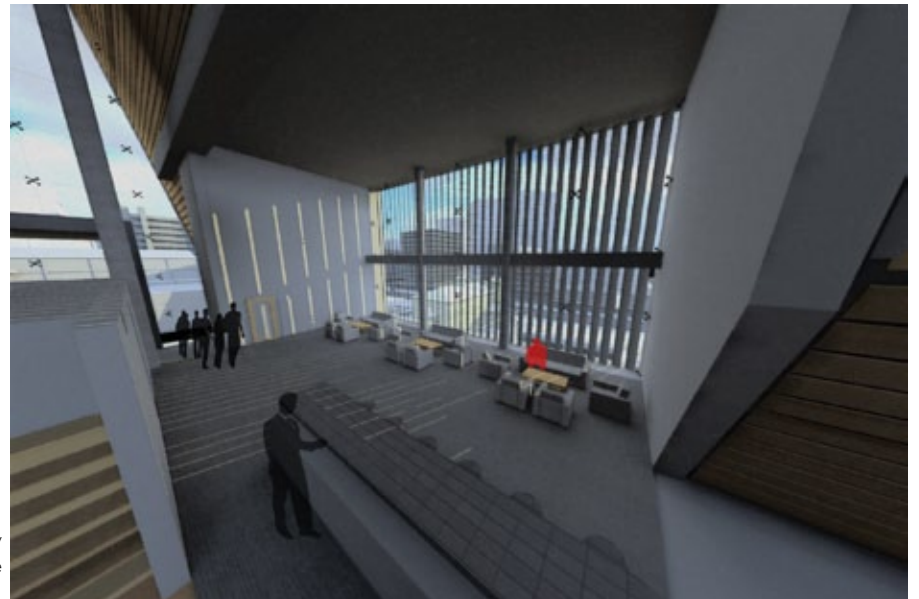


Fig. 6.13 Perspective showing view
from upper lounge to the synagogue



Fig. 6.17 Perspective showing restaurant spill out space and public address podium with the building connection to the square

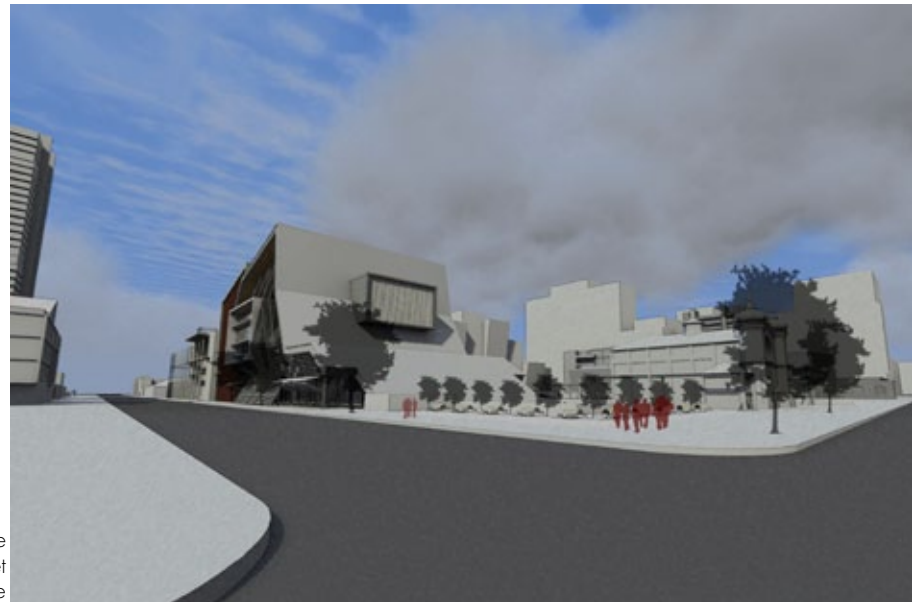
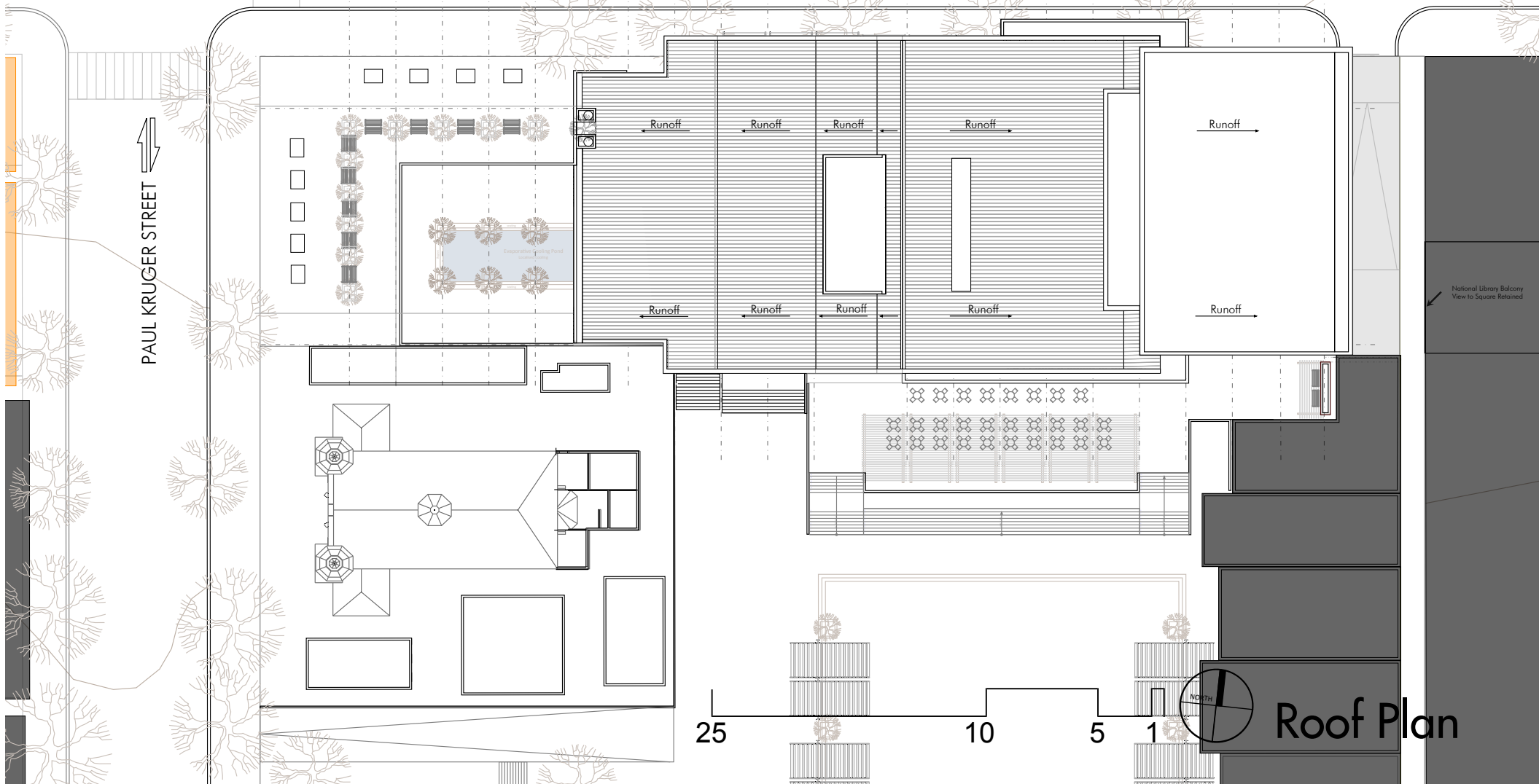


Fig. 6.18 Perspective showing the initial view from Paul Kruger street North west of the site

STRUBEN STREET →

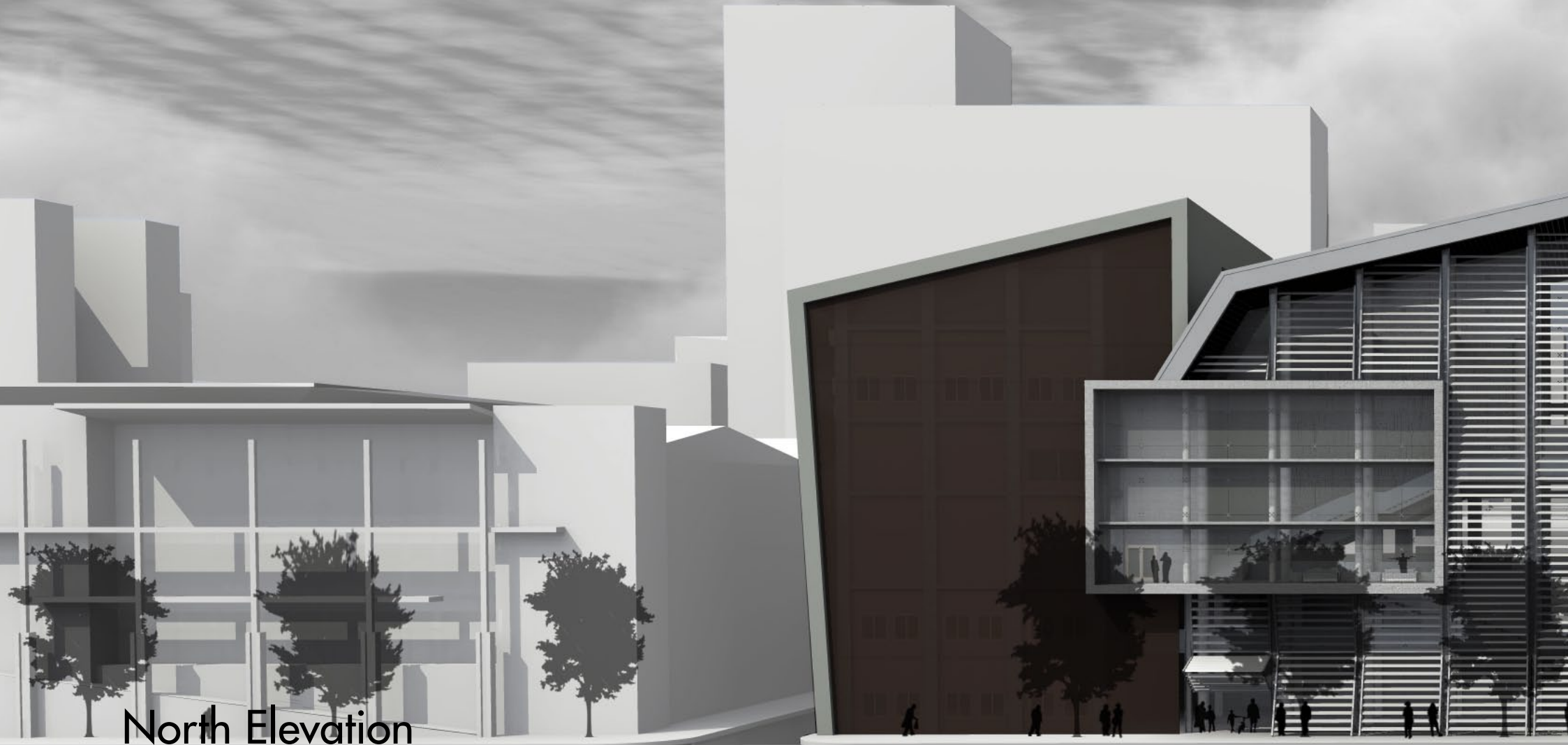
← PAUL KRUGER STREET



National Library Balcony
View to Square Retained



Roof Plan



North Elevation





West Elevation



3d Sections

Showing spatial arrangement

Fig. 6.22 Perspective Section showing spatial and Volumetric arrangement

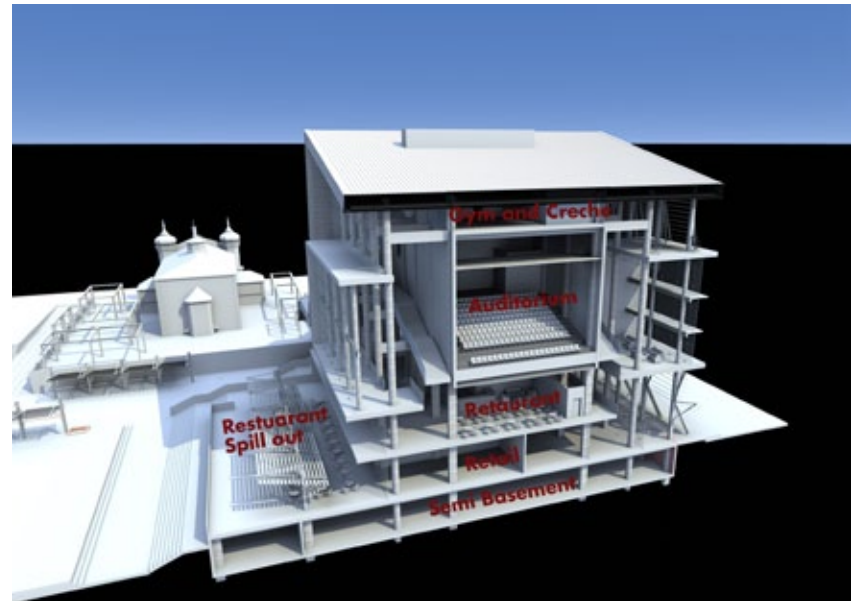


Fig. 6.23 Perspective Section showing spatial and Volumetric arrangement

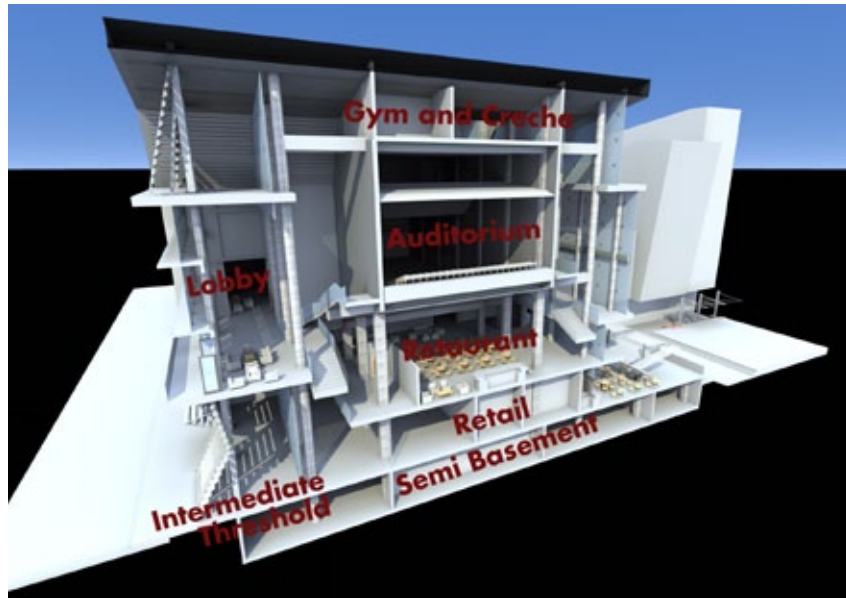


Fig. 6.24 Perspective Section showing spatial and Volumetric arrangement

