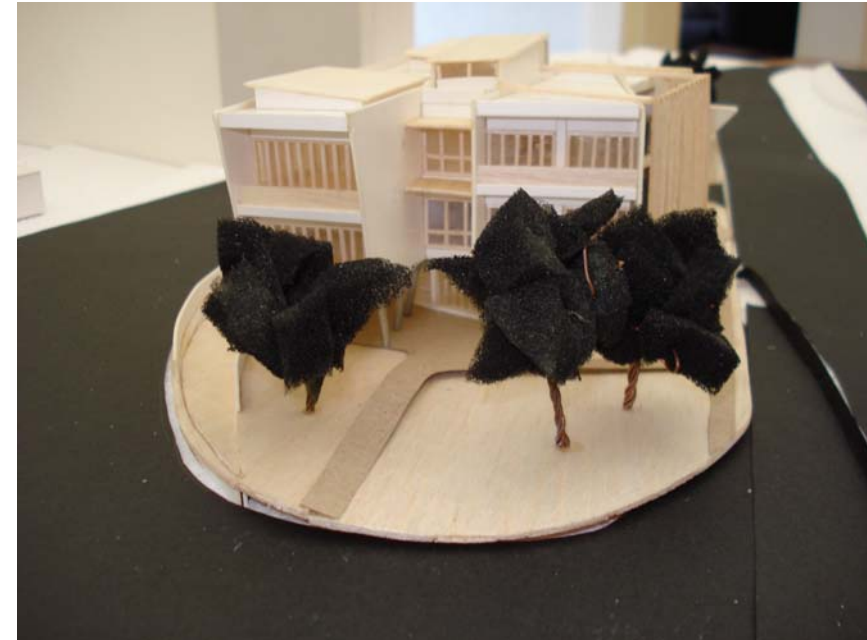
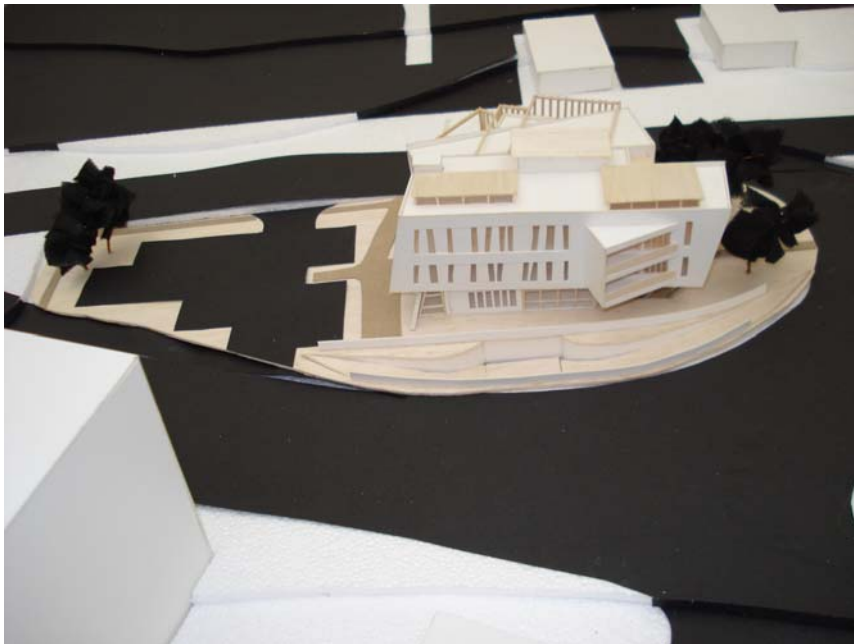
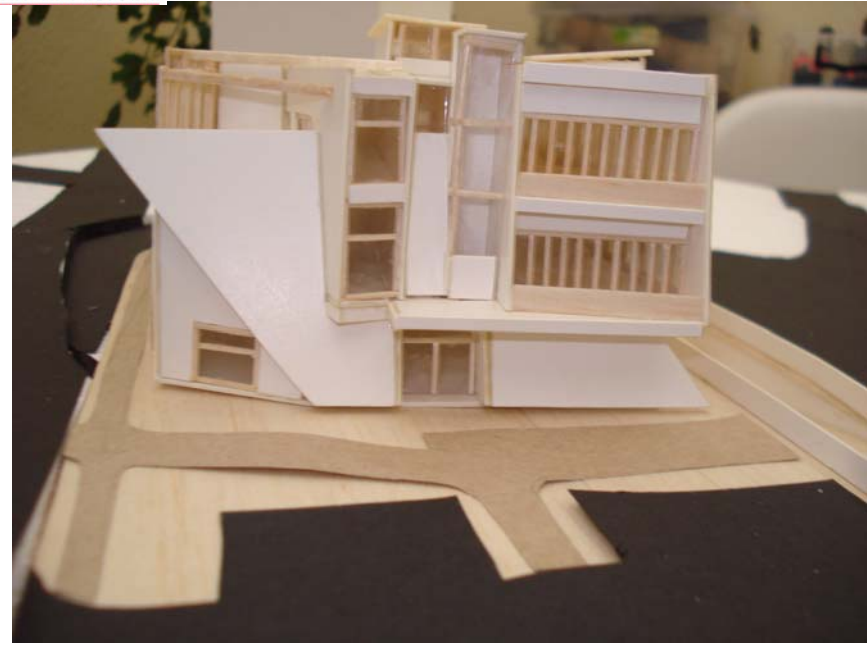




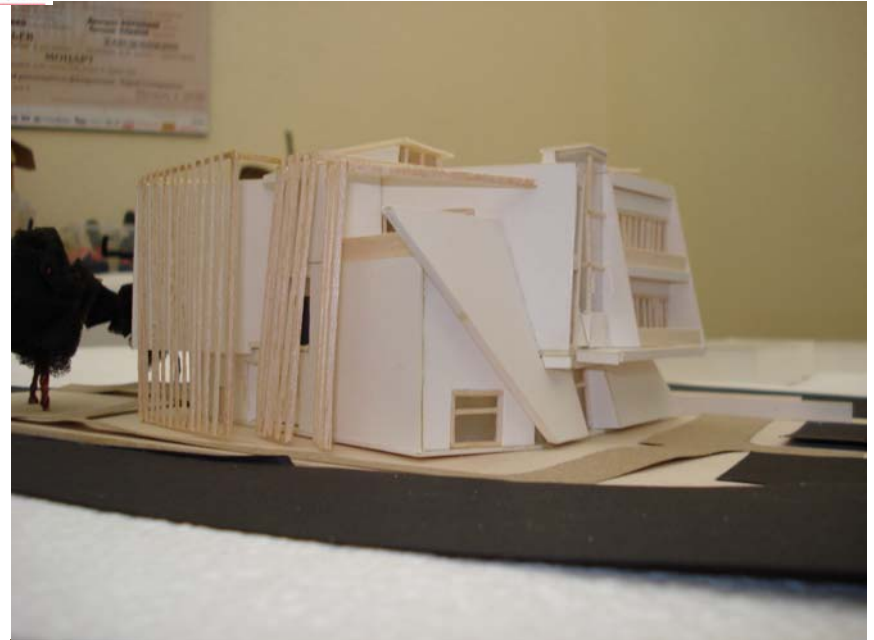
## 1. Model

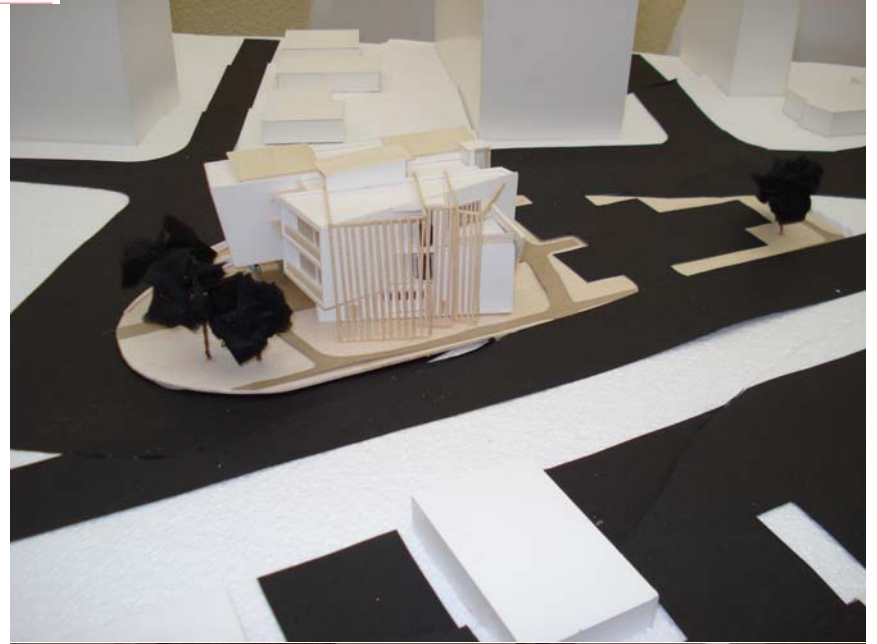
This serves as a documentation of the model that was built as part of the submission.





UNIVERSITEIT VAN PRETORIA  
UNIVERSITY OF PRETORIA  
YUNIBESITHI YA PRETORIA







- Agostini, F., 1983: *Mathematical and Logical Games*. London: MacDonal & Co.
- Alexander, C., 1977: *A Pattern Language*. New York: Oxford University Press.
- Anton, H. and C. Rorres, 1994: *Elementary Linear Algebra – Applications Version* (7<sup>th</sup> Edition). New York: John Wiley & Sons.
- Arcspace, 2004a: *Living Tomorrow Pavilion*. Available [online] at: [www.arcspace.com/architects/un/pavilion/pavilion\\_index.html](http://www.arcspace.com/architects/un/pavilion/pavilion_index.html) (Accessed 10 October 2009).
- Arcspace, 2004b: *Machining Architecture*. Available [online] at: [http://www.arcspace.com/books/nox\\_book/nox\\_book1.html](http://www.arcspace.com/books/nox_book/nox_book1.html) (Accessed 10 October 2009).
- Bahamon A., 2005: *Sketch, Plan, Build*. New York: Paco Asensio
- Bolwheki, 2002: *Gautrain Environmental Impact Assessment*. Johannesburg: Bolwheki Environmental.
- Bruwer, J., W. Martinson, M. Naude, H. Paine and H. Raath, 2003: *Heritage Impact Assessment of the Recommended Route Alignment for the proposed Gautrain Rapid Rail Link Project*. Report on behalf of Bolwheki Environmental (Pty) Ltd, March 2003.
- Burke, D., 2009: *Friday Fact Box – South African Online Media Statistics*. Available [online] at: <http://www.gottaquirk.com/2009/03/06/friday-fact-box-south-african-online-media-statistics/> (Accessed 25 March 2009).
- CTGIS, 2009: City of Tswane Geographical Systems. Available [online] at: [www.tswane.gov.za/street\\_search.cfm](http://www.tswane.gov.za/street_search.cfm). (Accessed 10 October 2009).
- CTMM (City of Tswane Metropolitan Municipality), 2005a: *Metropolitan Spatial Development Framework for the City of Tswane*. Pretoria: CTMM.
- CTMM (City of Tswane Metropolitan Municipality), 2005b: *City of Tswane Densification and Compaction Strategy*. Pretoria: CTMM.
- CTMM (City of Tswane Metropolitan Municipality), 2006: *Tswane Open Space Framework*. Pretoria: CTMM.
- CTMM (City of Tswane Metropolitan Municipality), 2007: *City of Tswane Metropolitan Municipality Draft Integrated Development Plan (IDP), 2006 – 2010*. Pretoria: CTMM.

CTMM (City of Tswane Metropolitan Municipality), 2008: *City of Tswane Integrated Transport Plan, 2004-2009*. Pretoria: CTMM.

Curl, J.S., 1999: *Dictionary of Architecture*. Oxford: Oxford University Press.

Digital Divide, 2009: *Digital Divide – What it is and why it Matters*. Available [online] at: <http://www.digitaldivide.org/dd/digitaldivide.html> (Accessed 25 March 2009).

Doorndan, D.P., 2001: *20<sup>th</sup> Century Architecture*. London: Laurence King Publishing.

Dreyfuss, H., 1972: *Symbol Sourcebook: an authoritative guide to International Graphic Symbols*. New York: Library of Congress

DST (Department of Science and Technology), 2009: *SA: MANGENA: Address by the Minister of Science and Technology at a “pro-maths” event hosted by Invested (23/01/2009)*. Available [online] at: [www.polity.org.za/article/sa-mangena-address-by-the-minister-of-science-and-technology-at-a-promaths-event-hosted-by-invested-23012009-2009-01-23](http://www.polity.org.za/article/sa-mangena-address-by-the-minister-of-science-and-technology-at-a-promaths-event-hosted-by-invested-23012009-2009-01-23) (Accessed 23 May 2009).

Eco, U., 2002: *On Literature*. London: Secker & Warburg.

EMAP Architecture, 1999: *Radical domesticity - the Mobius House's reflection of modern living*. Available [online] at: [http://findarticles.com/p/articles/mi\\_m3575/is\\_1231\\_206/ai\\_57041494/](http://findarticles.com/p/articles/mi_m3575/is_1231_206/ai_57041494/) (Accessed 10 October 2009).

Freedom Park, 2009: *The Company*. Available [online] at: [http://www.freedompark.co.za/cms/index.php?option=com\\_content&view=article&id=1&Itemid=4](http://www.freedompark.co.za/cms/index.php?option=com_content&view=article&id=1&Itemid=4) (Accessed 8 October 2009).

GAPP/MMA, 2003: Consortium professional team (Salvokop Development Framework and Freedom Park projects): *Gautrain Impact on Salvokop Suburb Development Framework and Freedom Park – Draft Guidelines for assessment of any major infrastructure intrusion*, March 2003.

Goethe, J.W., 1918 *Goethe Maximen und Reflexionen – Mit Erläuterungen von Max Hecker*. Frankfurt: Insel.

Hersey, G., 2001: *The Monumental Impulse. Architecture's Biological Roots*. Cambridge: MIT Press.

ITU (International Telecommunications Union), 2001: *Overview*. Available [online] at: [www.itu.int/ITU-D/digitaldivide](http://www.itu.int/ITU-D/digitaldivide) (Accessed 23 May 2009).

IWS (Internet World Stats), 2009: *Internet Usage Statistics for Africa*. Available [online] at: <http://www.internetworldstats.com/stats1.htm> (Accessed 25 March 2009).

Krajewski, P., 2009: *Living Tomorrow*. Available [online] at: [www.mimooa.eu/projects/Netherlands/Amsterdam/Living%20Tomorrow](http://www.mimooa.eu/projects/Netherlands/Amsterdam/Living%20Tomorrow) (Accessed 10 October 2009).

Level, 2009: *Passive ventilation*. Available [online] at: <http://www.level.org.nz/passive-design/controlling-temperature/passive-ventilation/> (Accessed on 8 October 2009).

Mandelbrot, B., 1982: *The Fractal Geometry of Nature*. UK: W.H. Freeman.

McLeod, W., 1985: *Collin's Concise Dictionary of the English Language*. London: Guild Publishing.

Nesbitt, K., 1995: *Theorizing a new agenda for architecture*. Princeton: Princeton Architectural Press.

Norberg-Schulz, C., 2000: *Principles of Modern Architecture*. London: Andreas Papadakis.

NOX, 2003: *Beachness, Boulevard en Palace Hotel te Noordwijk*. Available [online] at: [http://www.classic.archined.nl/extra/expo/9711/nox\\_noordwijk.html](http://www.classic.archined.nl/extra/expo/9711/nox_noordwijk.html) (Accessed 10 October 2009).

NRF (National Research Fund), 2009: Education and the Challenges for Change. Available [online] at: [www.nrf.ac.za/focusareas/educate/](http://www.nrf.ac.za/focusareas/educate/) (Accessed 4 October 2009).

OSE (Office of Sustainability and the Environment), 2009: *Green Building: Guidelines for Design. Siting & Form: Daylight/Views/Cooling*. Available [online] at: <http://www.smgov.net/Departments/OSE/categories/content.aspx?id=4451> (Accessed 10 October 2009).

Poole, R.H., 1954: *The New Imperial Reference Dictionary*. London: George Newnes.

Preziosi, D., 1979: *Architecture, Language and Meaning – The Origins for the Built World and its Semiotic Organization*. The Hague: Mouton Publishers.

Railways Africa, 2007: *Gautrain imports skills*. Available [online] at: [www.railwaysafrica.com/2007/07/gautrain-imports-skills/](http://www.railwaysafrica.com/2007/07/gautrain-imports-skills/) (Accessed 23 May 2009).

Railways Africa, 2009: *Gautrain and skills development*. Available [online] at: [www.railwaysafrica.com/2009/04/gautrain-skills-development/](http://www.railwaysafrica.com/2009/04/gautrain-skills-development/) (Accessed 23 May 2009).

Ruskin, J., 1907: *The Stones of Venice*, London: J. M. Dent & company.

SA Info, 2006: *SA's high-speed train on track*. Available [online] at: [www.southafrica.info/business/economy/infrastructure/gautrain.htm](http://www.southafrica.info/business/economy/infrastructure/gautrain.htm) (Accessed 23 May 2009).

SAMF (South African Mathematics Foundation), 2009: South African Mathematics Foundation. Available [online] at: [www.samf.ac.za/](http://www.samf.ac.za/) (Accessed 4 October 2009).

Schultz, C.C., 2009: *Natural Ventilation Basics*. Available [online]: [http://www.esmagazine.com/Articles/Cover\\_Story/BNP\\_GUID\\_9-5-2006\\_A\\_1000000000000675107](http://www.esmagazine.com/Articles/Cover_Story/BNP_GUID_9-5-2006_A_1000000000000675107) (Accessed 10 October 2009).

Sinclair, J., 1988: *Collin's Cobuild Essential English Dictionary*. Glasgow: William Collins Sons & Co.

Spuybroek, L., 1999: *Nox Architekten*. Available [online] at: <http://www.archilab.org/public/1999/artistes/noxa01en.htm> (Accessed 10 October 2009).

Steele, J., 2001: *Architecture and Computers – Action and Reaction in the Digital Design Revolution*. New York: Watson-Guption Publications.

Stewart, I., 1995: *Nature's Numbers – Discovering Order and Pattern in the Universe*. London: Phoenix.

Stories of Houses, 2003: *Mobius house in Amsterdam*. Available [online] at: <http://storiesofhouses.blogspot.com/2006/09/mobius-house-in-amsterdam-by-ben-van.html> (Accessed 10 October 2009).

UNFPA (United Nations Population Fund), 2007: *State of the World Population Report*. Geneva: UNFPA.

UNStudio, 2009a: *Living Tomorrow*. Available [online] at: [www.unstudio.com/nl/unstudio/projects/name/6/0/2542/living-tomorrow](http://www.unstudio.com/nl/unstudio/projects/name/6/0/2542/living-tomorrow) (Accessed 10 October 2009).

UNStudio, 2009b: *Mobius House*. Available [online] at: <http://www.unstudio.com/nl/unstudio/projects/mobius-house> (Accessed on 10 October 2009).

UNStudio, 2009c: *Use of Models*. Available [online] at: <http://www.unstudio.com/studio/design-method/design-models> (Accessed 10 October 2009).

Venturi, R., 1966: *Complexity and Contradiction*. New York: Museum of Modern Art.

Vividvormgeving, 2009: *Interviews*. Available [online] at: <http://www.vividvormgeving.nl/vormgeverpagina/spuybroek.htm> (Accessed 10 October 2009).

Weather SA, 2003: *Climate data for Pretoria*. Available [online] at: [www.weathersa.co.za/climat/climstats/pretoriastats.jsp](http://www.weathersa.co.za/climat/climstats/pretoriastats.jsp) (Accessed 10 October 2009).

Westen, D., 1996: *Psychology – Mind, brain and culture*. New York: John Wiley and Sons.

WRC (Water Research Commission), 1995: A South African Aquifer System Management Classification. *Water Research Commission Report No KV 77/95*. Pretoria: WRC.

XenoDream, 2008: *XenoDream v.2.2*. New Jersey: XenoDream Software.