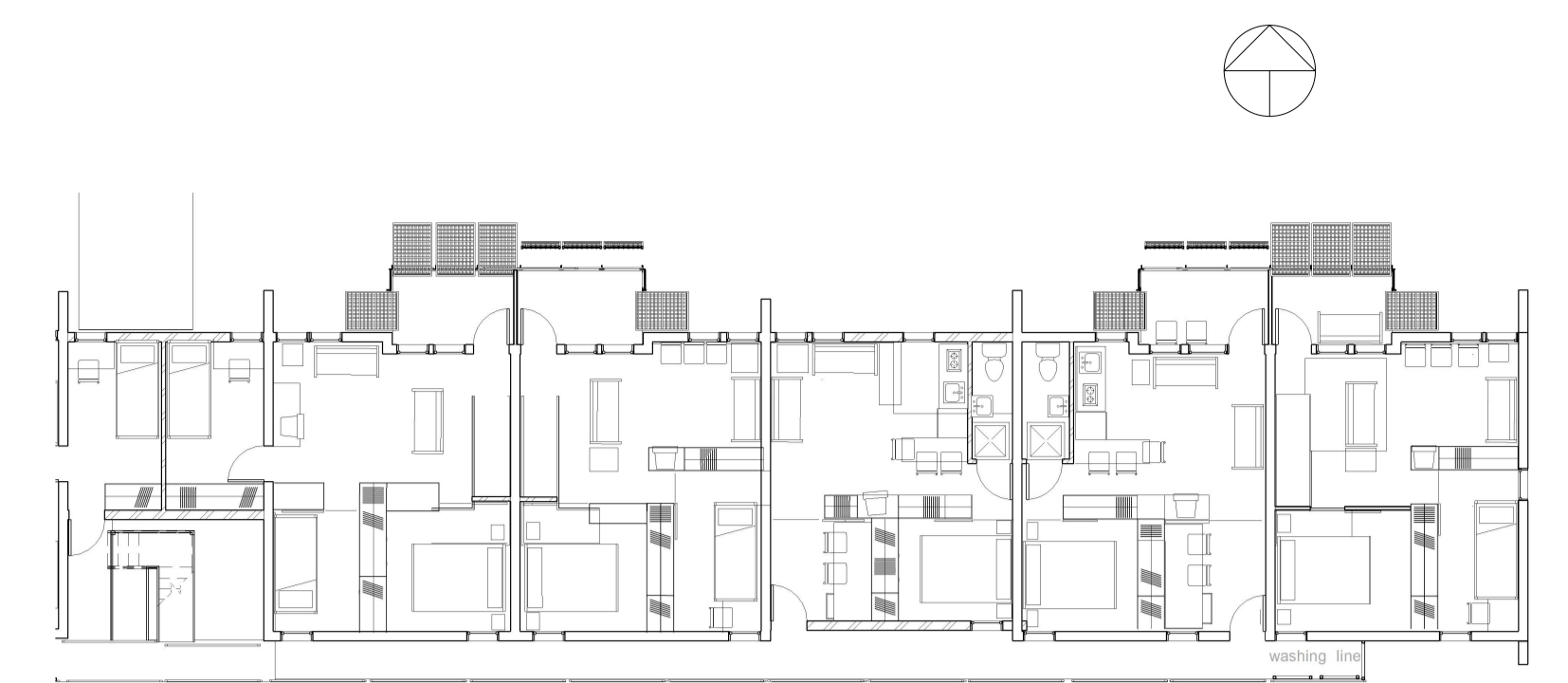


Typical Bachelor unit - 32m<sup>2</sup>

Typical 2 bedroom unit - 64m<sup>2</sup>



Typical first floor unit layout

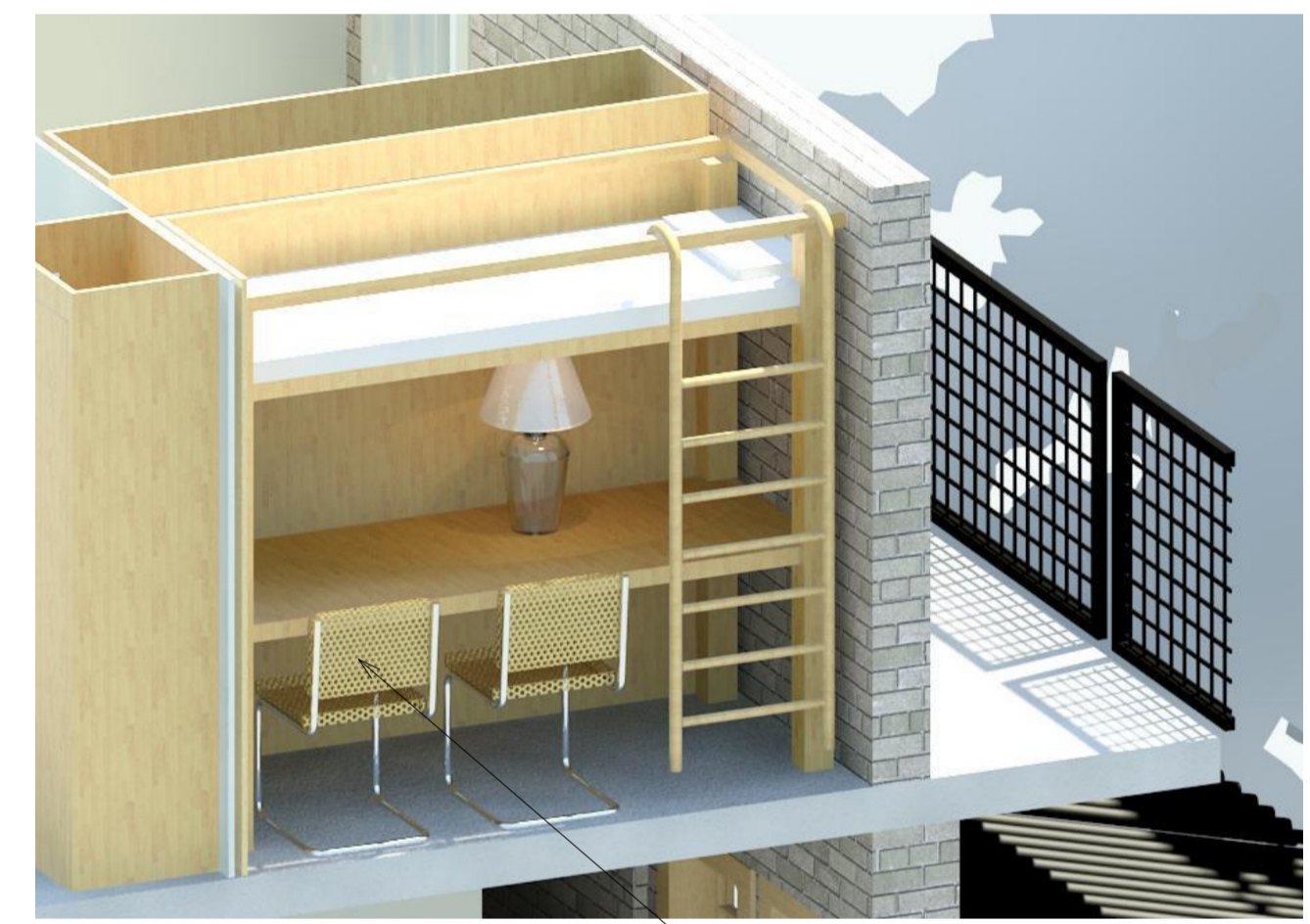
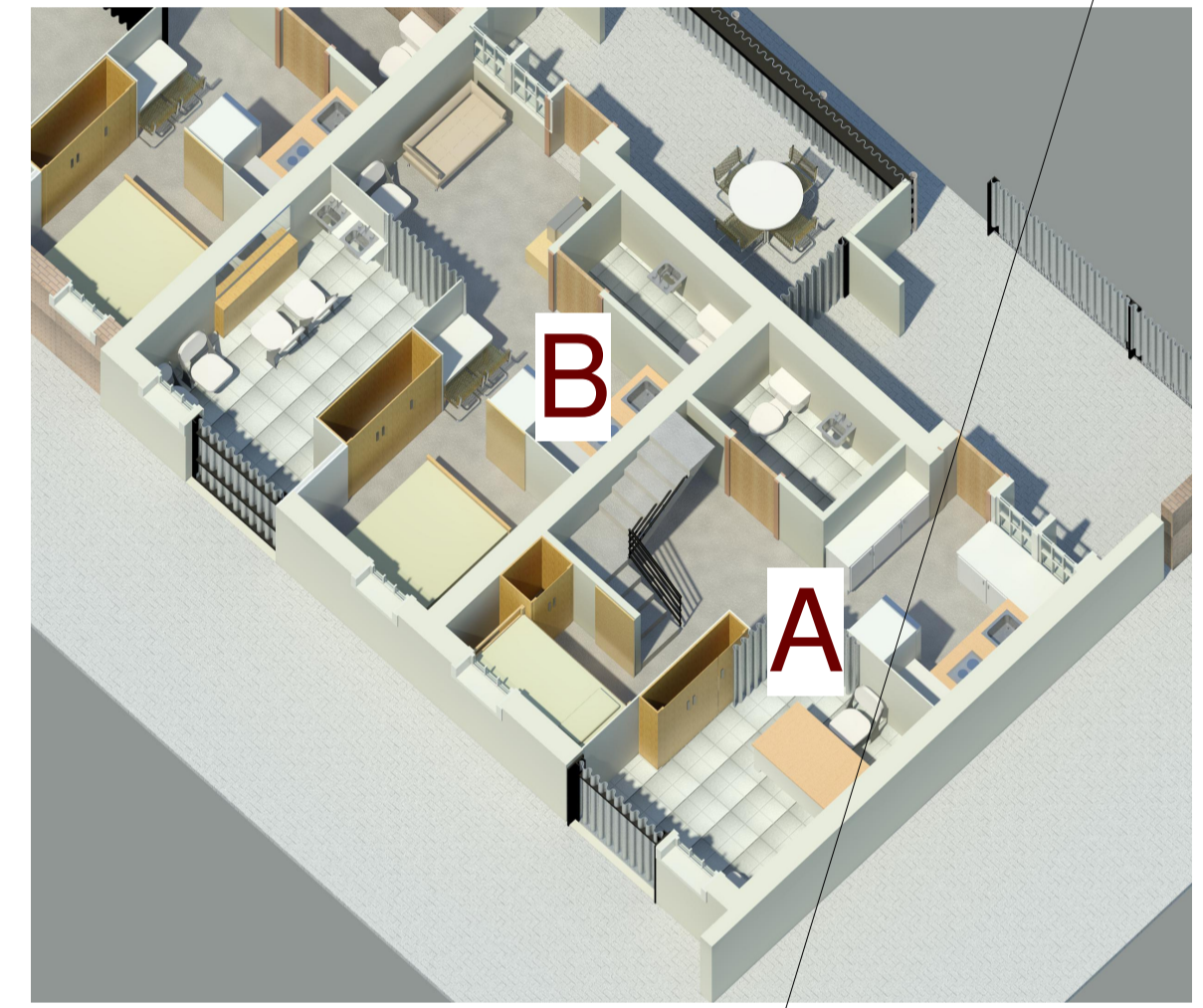
Incorporation of two adjoining units - A and B.  
B incorporated into A by removing dry wall panel between the two units. Dry wall designed as infill in support structure.

retail

Typical ground floor unit layout



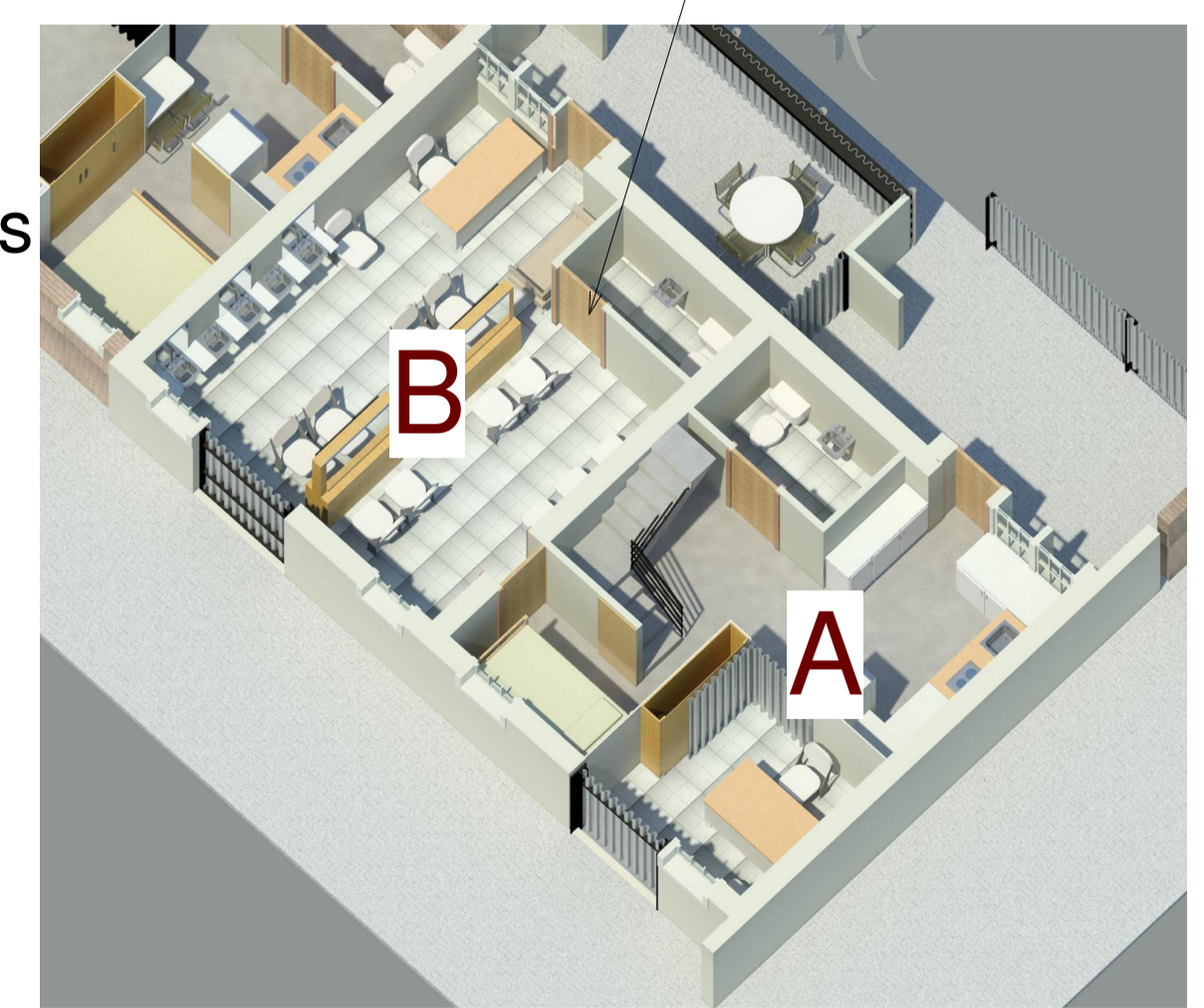
Night option with sliding panels enabling versatile spaces



study corner with bunk bed option



Day option with closed sliding panels to create private retail space



Adaptable Housing  
*The Language of Space*

HJ Moller 2008-11-27