

05

SERVICES



Making place for the informal dweller and the services of a building.

The proposal for a servant building originates from the needs of the displaced dweller and the obligation of a Government towards service delivery.

services:

immediate provision at core



passive surveillance
as by-product



potable water
- performs as catalyst stimulating the growth of infrastructure and social activities.



washing
- social catalyst



fire store
- providing in community need



telecommunications
- social catalyst



recreation
- a relationship between servant core and existing (soccer field or alternative) space with public function. A symbiotic relationship will be established between new function and the original destination.



SERVANT CORE

The servant core as a design intervention exists as a process. A phased upgrading is envisioned introducing additional services at later stages of the project. The first stage is to initiate the catalyst whilst the modular steel units extend through later phases defining the spine[s]. Additional public amenities programmes may be accommodated through the servant spine. Any part of the programme may be detached when rendered obsolete.

The original design intervention initiated a servant core in the form of a water reservoir tower. The tower should serve as a catalyst stimulating new activities (both built and social).

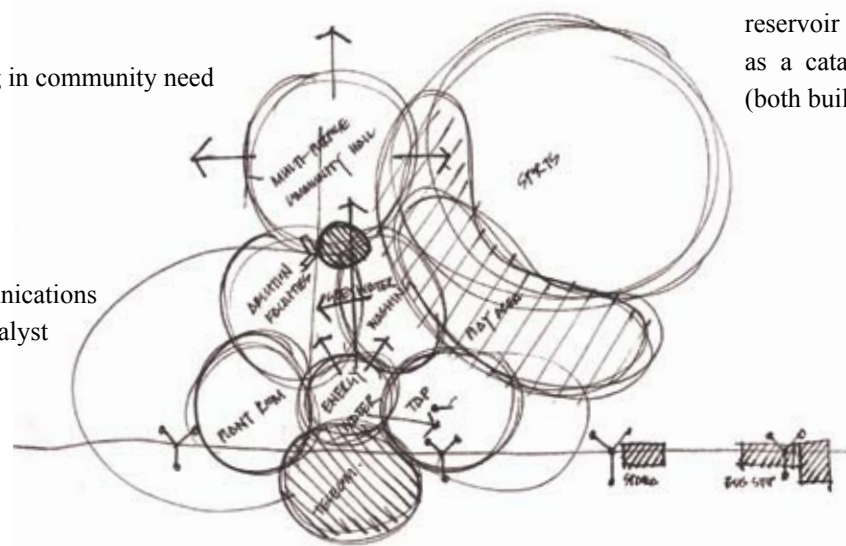
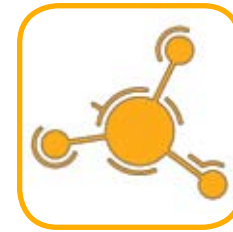
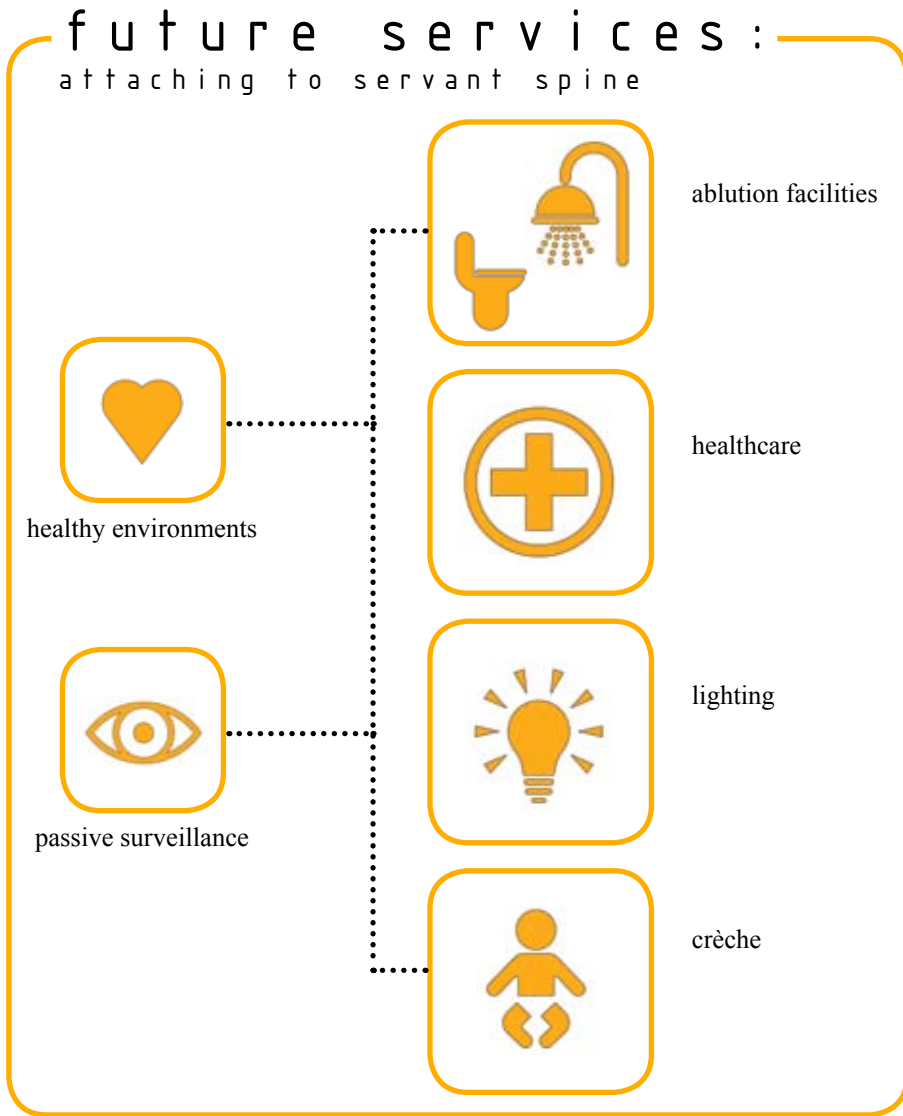


Fig. 66 Illustration of services provided at core



SERVANT SPINE

An adaptable structure should allow for reuse of the structure and its servant spine. A change in building programme or the introduction of a complete new programme should be facilitated to accommodate a future function and user.



Fig. 67 Illustration depicting future service to be attached along servant spine