



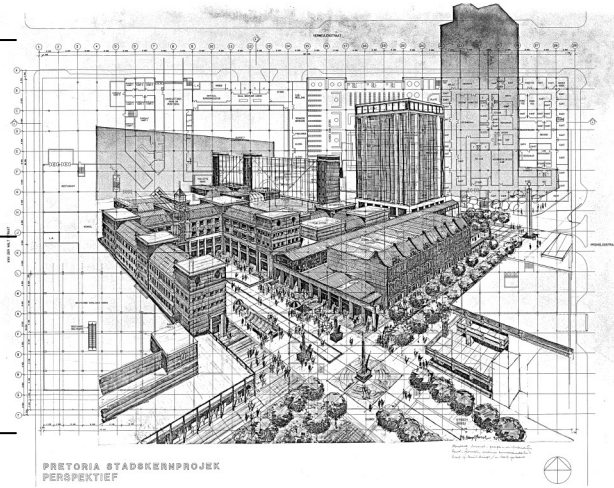
- 01 SAMMY MARKS DEVELOPMENT PLANS
- 02 LEWIS & MARKS PLANS
- 03 KYNOCK PLANS

APPENDIX

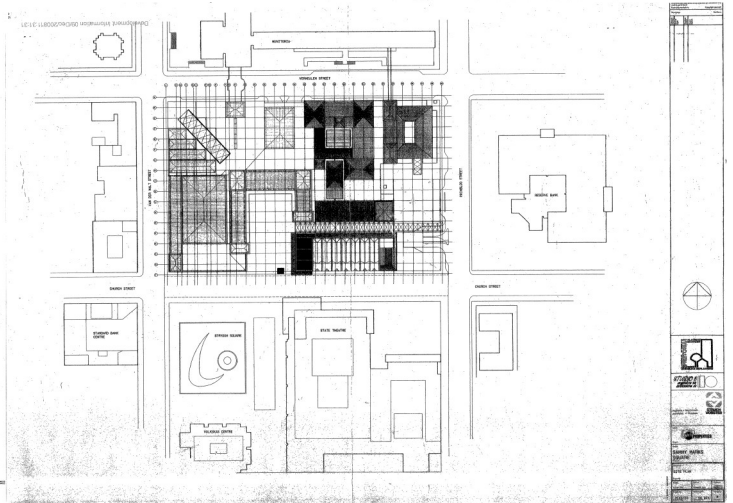


A

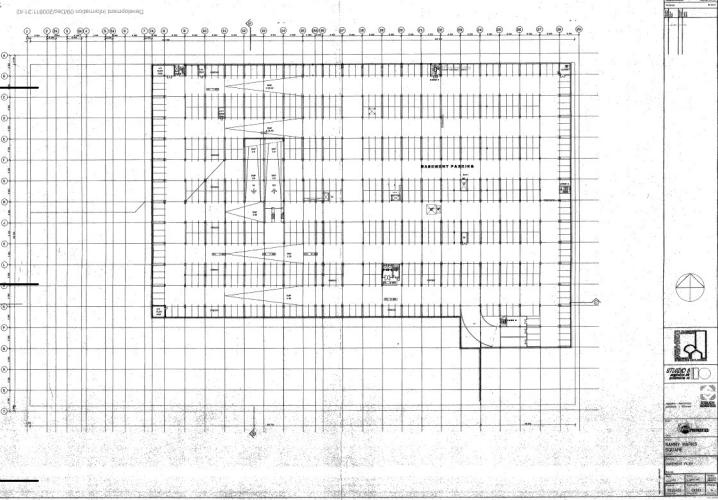
1



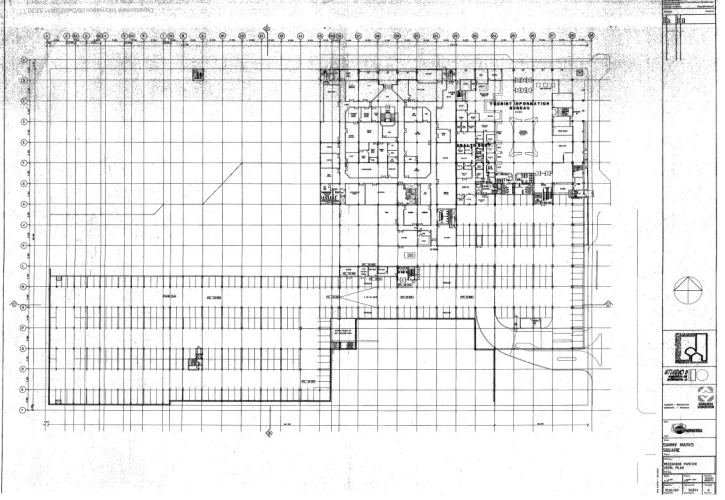
A1.1 Perspective of Sammy Marks Development



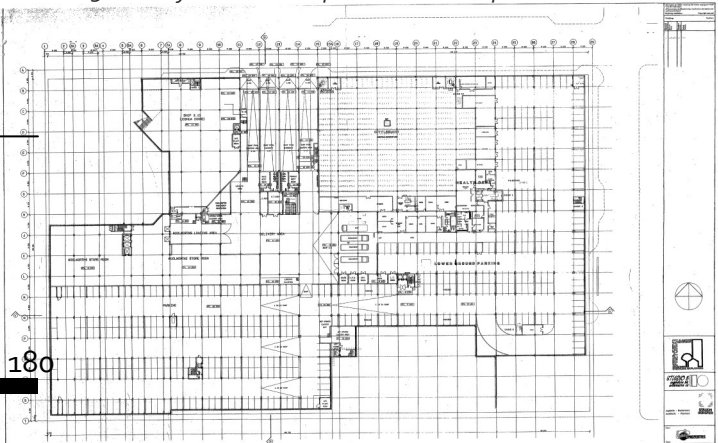
A1.2. Sammy Marks Development site plan



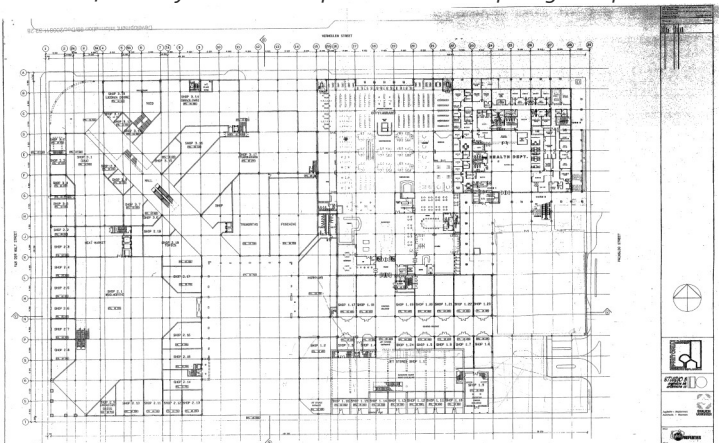
A1.3. Sammy Marks Development Basement plan



A1.4. Sammy Marks Development Mezzanine parking level plan



A1.5. Sammy Marks Development Lower Ground floor plan

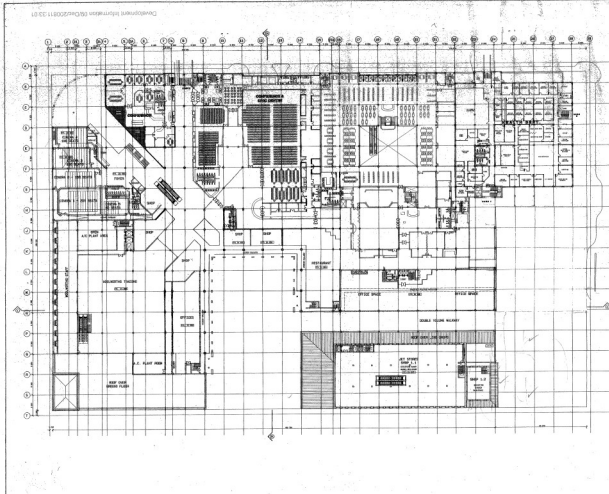


A1.6. Sammy Marks Development Upper Ground floor plan

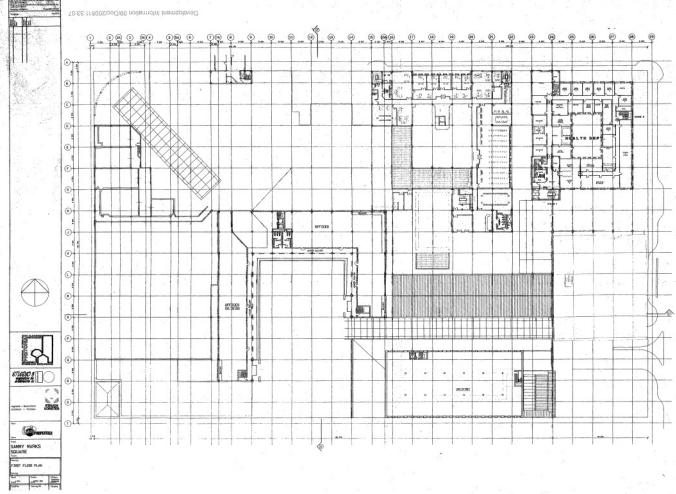


appendix 1

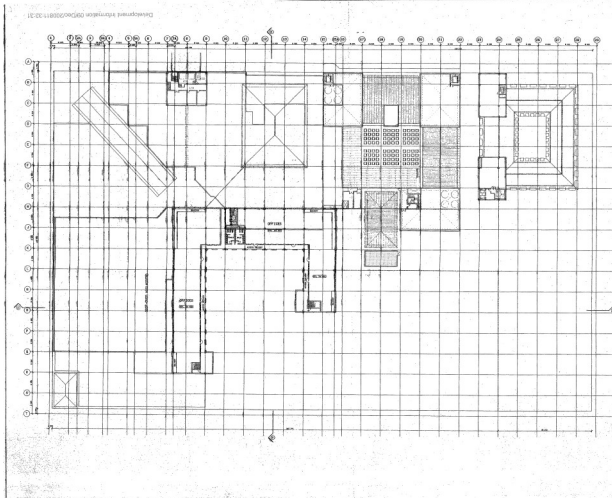
1- SAMMY MARKS DEVELOPMENT PLANS



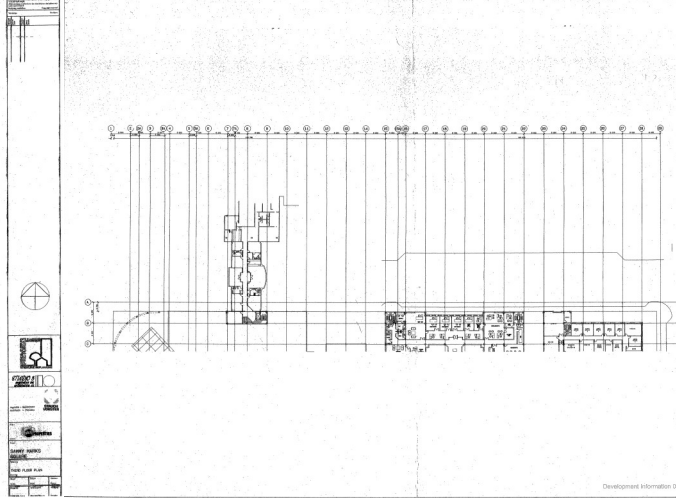
A1.7. Sammy Marks Development First floor plan



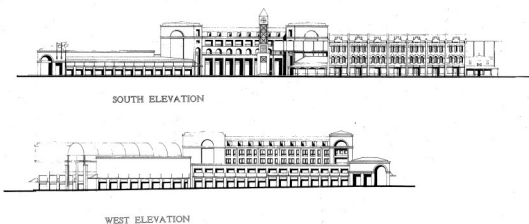
A1.8. Sammy Marks Development Second floor plan



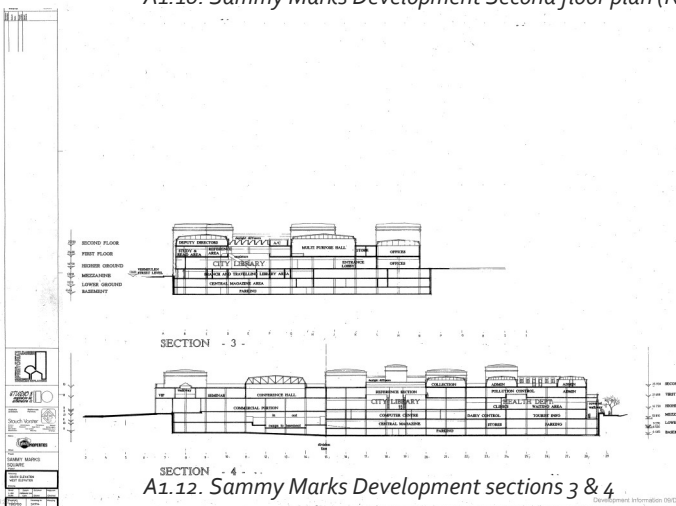
A1.9. Sammy Marks Development Third floor plan



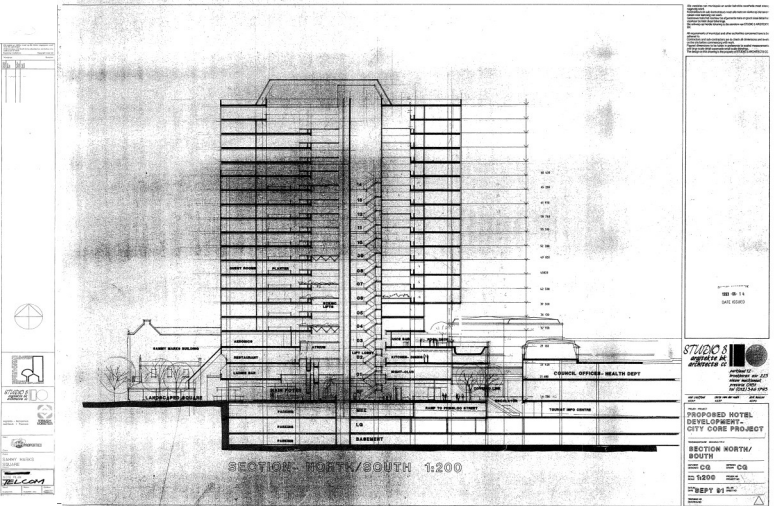
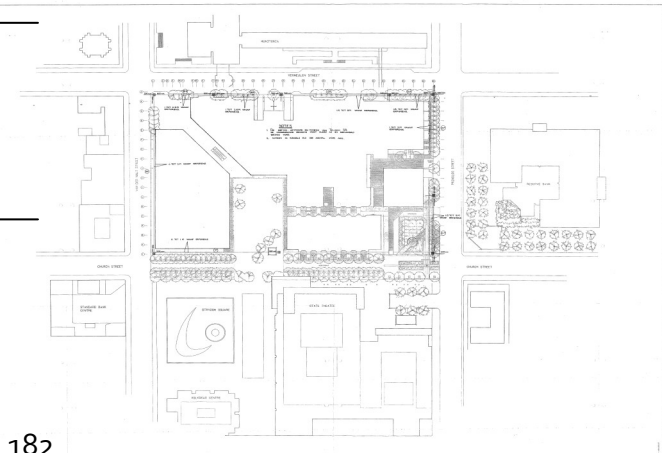
A1.10. Sammy Marks Development Second floor plan (North)



A1.11. Sammy Marks Development South & North elevation.



A1.12. Sammy Marks Development sections 3 & 4

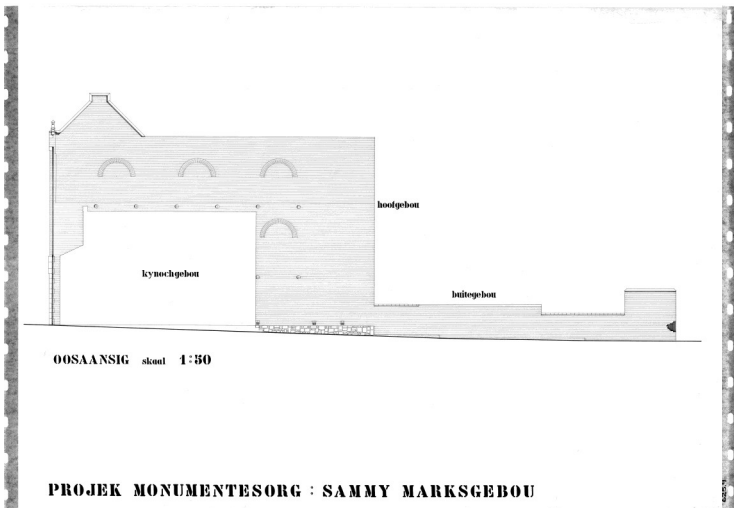


A1.13. Sammy Marks Development Site plan

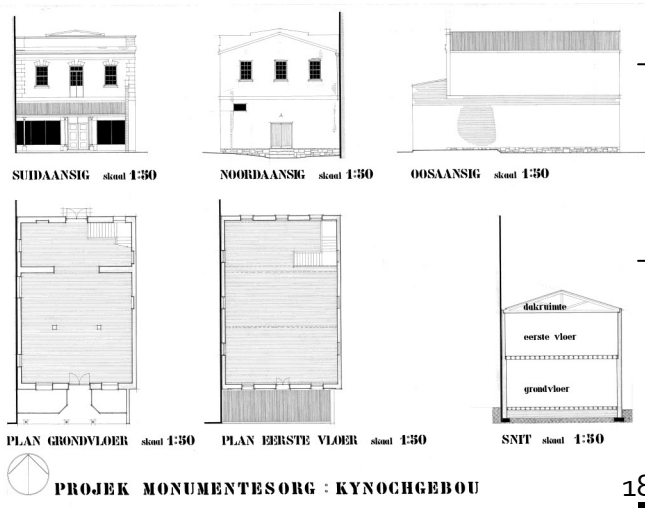
A1.14. Sammy Marks Development: Proposed hotel section North/South



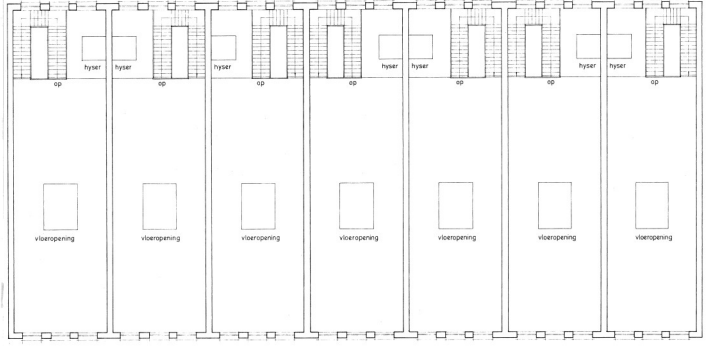
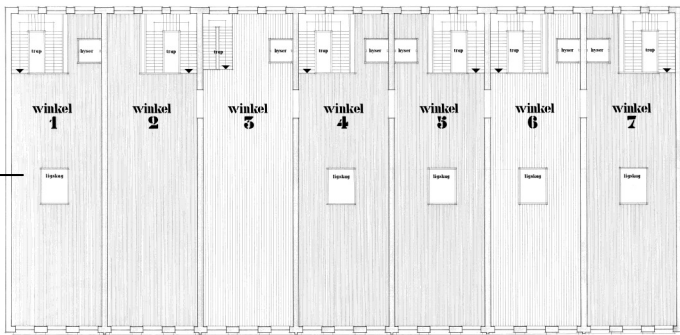
2– KYNOCH BUILDING PLANS



A2.1. Elevation of Lewis & Marks and Kynoch building



A2.2. Kynoch building plans



L.W. DE EERSTE EN TWEEDE VLOER
IS IDENTIES OP PLAN

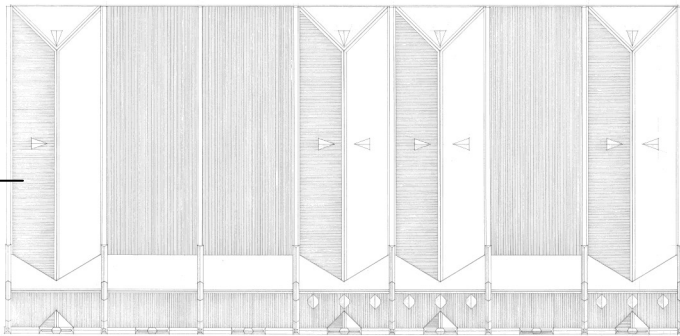
TWEEDE VLOER

skalaal
1 meter

TIPIESE PLAN EERSTE EN TWEEDE VLOERE skaal 1:50
PROJEK MONUMENTESORG SAMMY MARKSGEBOU

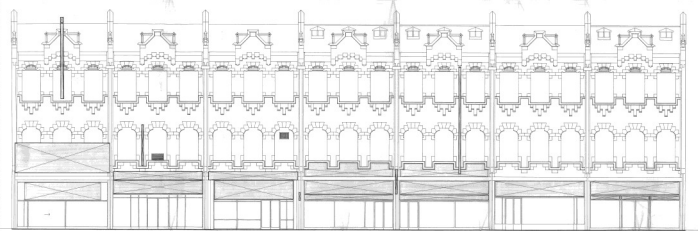
A3.1. Monument Documentation: Lewis & Marks building, First & Second floor plan

A3.2. Monument Documentation: Lewis & Marks building, Second floor plan



DAKPLAN HOOPGEBOU skaal 1:30
PROJEK MONUMENTESORG : SAMMY MARKSGEBOU

A3.3. Monument Documentation: Lewis & Marks building, Roof plan



HUIDIGE AANSIG SUID skaal 1:30

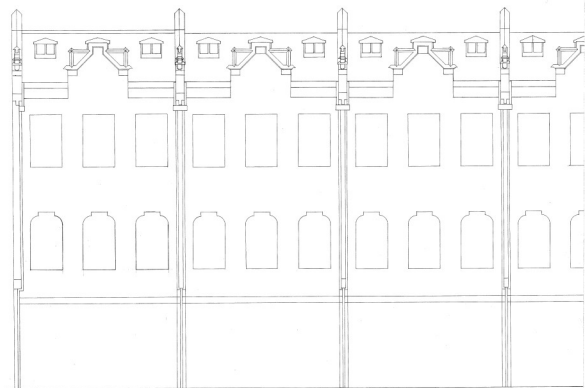
PROJEK MONUMENTESORG : SAMMY MARKSGEBOU

A3.4. Monument Documentation: Lewis & Marks building, South elevation



Oorspronklike noordaansig 1:50

A3.5. Monument Documentation: Lewis & Marks building, Original North elevation

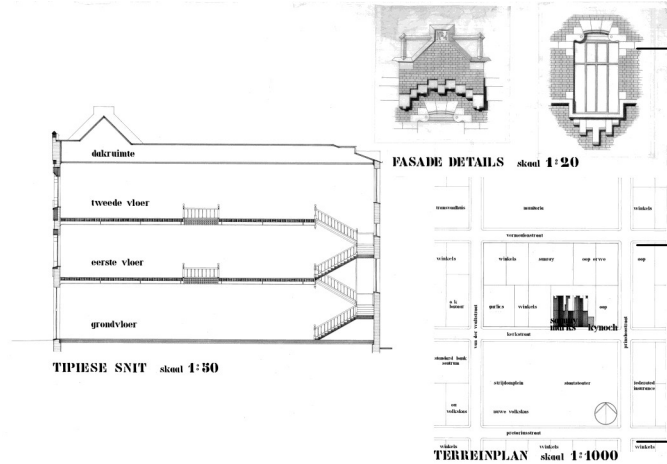


Oorspronklike suidaansig 1:50

A3.6. Monument Documentation: Lewis & Marks building, Original South elevation

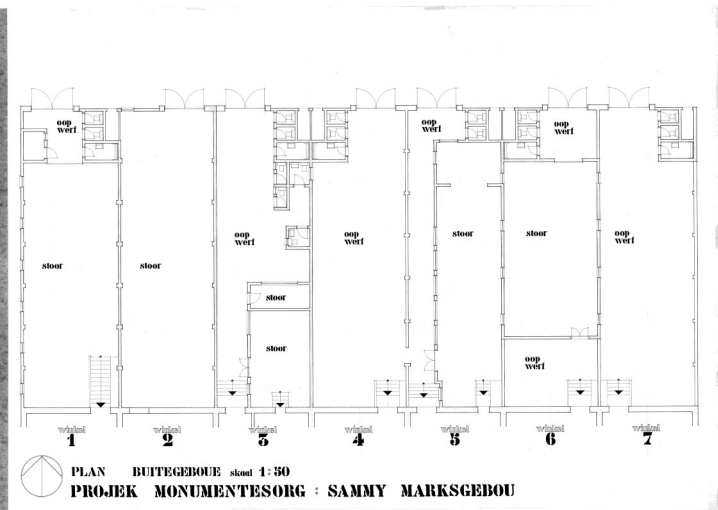


3- LEWIS & MARKS PLANS & PHOTOS

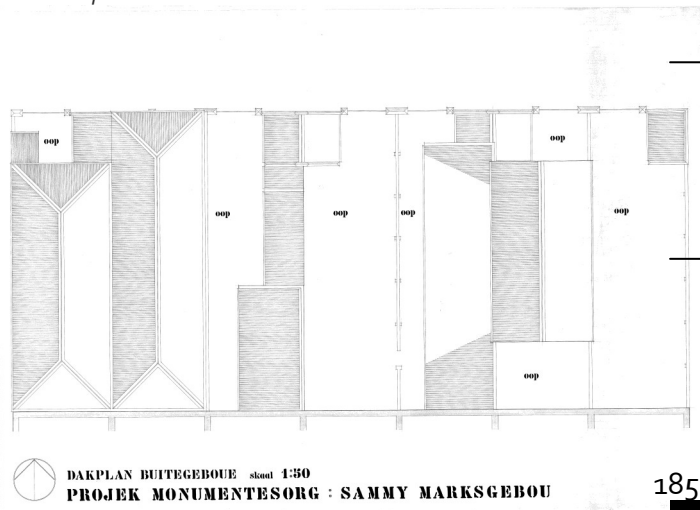


PROJEK MONUMENTESORG : SAMMY MARKSGEBOU

A3.7. Monument Documentation: Lewis & Marks building, Section, Site plan and details



A3.8. Monument Documentation: Lewis & Marks building, out-building plan



A3.9. Monument Documentation: Lewis & Marks building, Out-building roof plan



A3.10. Photograph of Lewis & Marks building: North elevation



A3.11. Photograph of Lewis & Marks building: South elevation



A3.12. Photograph of Lewis & Marks building: North elevation



A3.13. Photograph of Lewis & Marks building: South elevation



A3.14. Photograph of Lewis & Marks building: South elevation



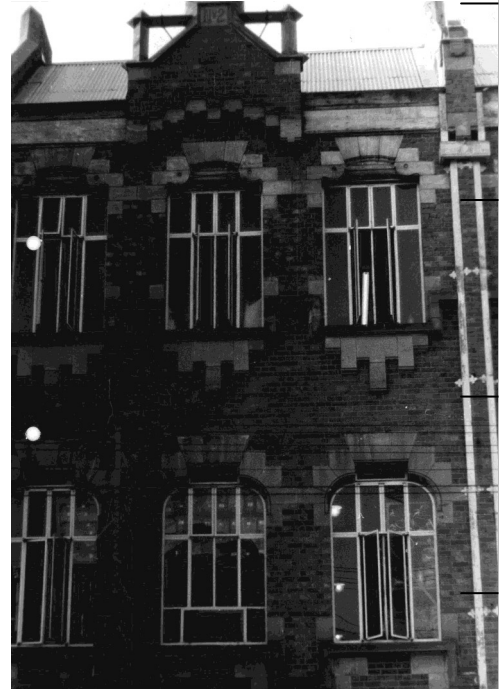
A3.15. Photograph of Lewis & Marks building: context



A3.16. Photograph of Lewis & Marks building: North elevation



A3.17. Photograph of Lewis & Marks building: North elevation



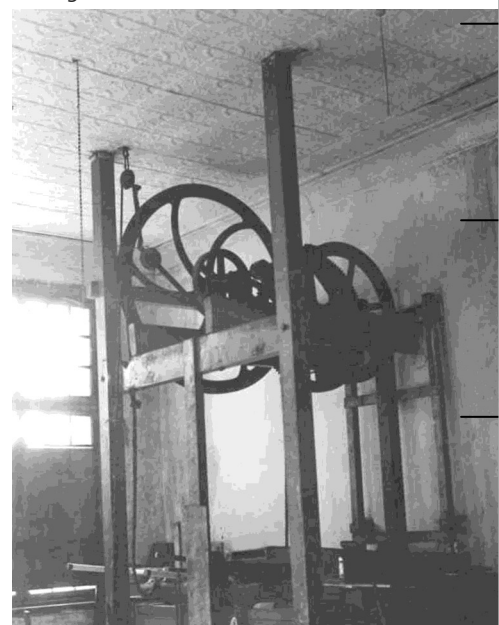
A3.18. Photograph of Lewis & Marks building: South elevation



A3.19. Photograph of Lewis & Marks building: South elevation



A3.20. Photograph of Lewis & Marks building: South elevation



A3.21. Photograph of Lewis & Marks building: Lift



A3.22. Photograph of Lewis & Marks building: Staircase

A3.23. Photograph of Lewis & Marks building: Staircase

A3.24. Photograph of Lewis & Marks building: View to the State Theatre

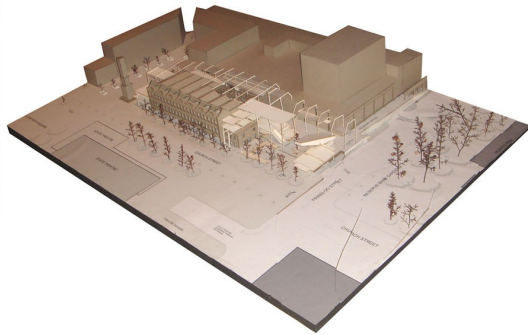
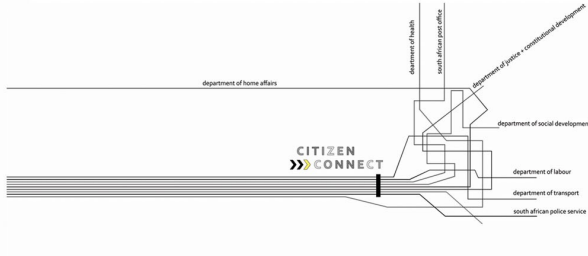
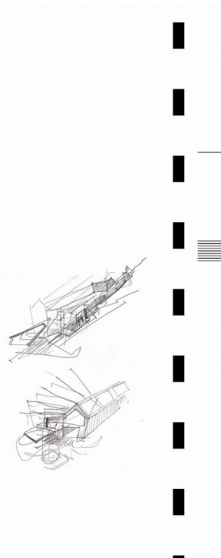


01 FINAL PRESENTATION

APPENDIX



A2



CITIZEN CONNECT

shopfront for government services

With the government's commitment to a digital and data-driven approach to service delivery, the shopfront for government services is a key component of the government's digital strategy. The shopfront is a physical space where citizens can interact with government services, and it is designed to be a user-friendly, accessible, and secure environment. The shopfront is a key component of the government's digital strategy, and it is designed to be a user-friendly, accessible, and secure environment.

1 reactive framework

2 [internal programme]

3 [internal programme]

4 [internal programme]

5 [internal programme]

6 [internal programme]

7 [internal programme]

8 [internal programme]

9 [internal programme]

10 [internal programme]

11 [internal programme]

12 [internal programme]

13 [internal programme]

14 [internal programme]

15 [internal programme]

16 [internal programme]

17 [internal programme]

18 [internal programme]

19 [internal programme]

20 [internal programme]

21 [internal programme]

22 [internal programme]

23 [internal programme]

24 [internal programme]

25 [internal programme]

26 [internal programme]

27 [internal programme]

28 [internal programme]

29 [internal programme]

30 [internal programme]

31 [internal programme]

32 [internal programme]

33 [internal programme]

34 [internal programme]

35 [internal programme]

36 [internal programme]

37 [internal programme]

38 [internal programme]

39 [internal programme]

40 [internal programme]

41 [internal programme]

42 [internal programme]

43 [internal programme]

44 [internal programme]

45 [internal programme]

46 [internal programme]

47 [internal programme]

48 [internal programme]

49 [internal programme]

50 [internal programme]

51 [internal programme]

52 [internal programme]

53 [internal programme]

54 [internal programme]

55 [internal programme]

56 [internal programme]

57 [internal programme]

58 [internal programme]

59 [internal programme]

60 [internal programme]

61 [internal programme]

62 [internal programme]

63 [internal programme]

64 [internal programme]

65 [internal programme]

66 [internal programme]

67 [internal programme]

68 [internal programme]

69 [internal programme]

70 [internal programme]

71 [internal programme]

72 [internal programme]

73 [internal programme]

74 [internal programme]

75 [internal programme]

76 [internal programme]

77 [internal programme]

78 [internal programme]

79 [internal programme]

80 [internal programme]

81 [internal programme]

82 [internal programme]

83 [internal programme]

84 [internal programme]

85 [internal programme]

86 [internal programme]

87 [internal programme]

88 [internal programme]

89 [internal programme]

90 [internal programme]

91 [internal programme]

92 [internal programme]

93 [internal programme]

94 [internal programme]

95 [internal programme]

96 [internal programme]

97 [internal programme]

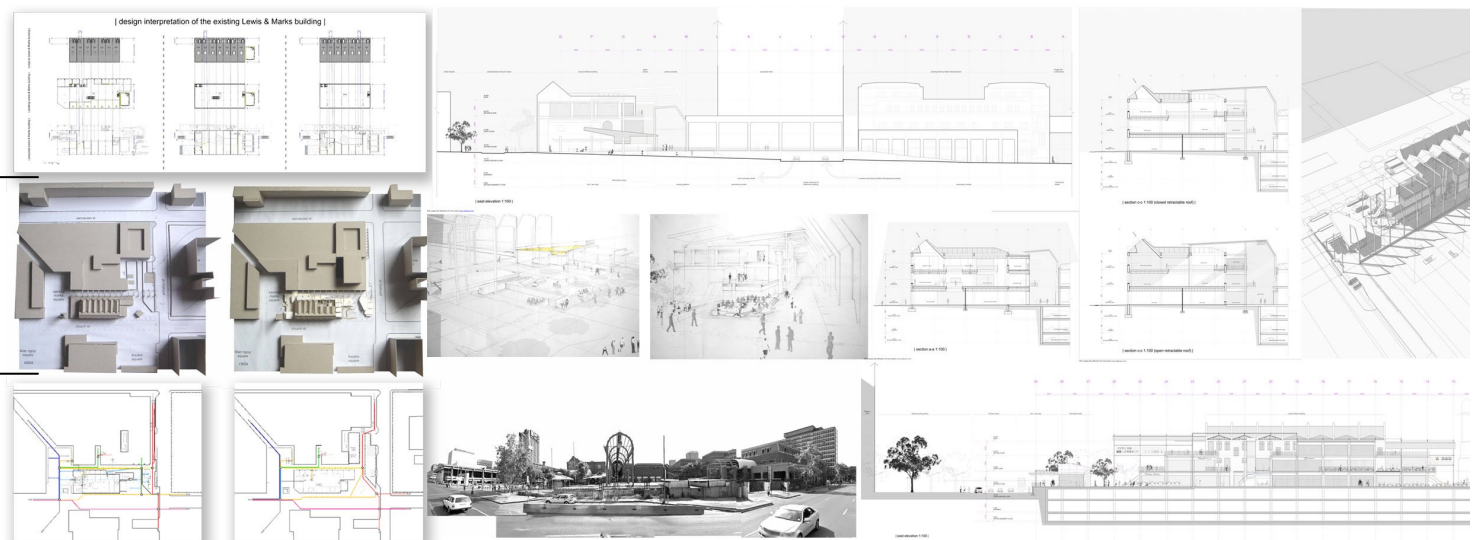
98 [internal programme]

99 [internal programme]

100 [internal programme]



Historic urban landscape 23 existing urban landscape





The image displays a comprehensive architectural design portfolio for a building project. The layout is organized into several key sections:

- Left Column:** A vertical strip of material samples, including various wall finishes, floor tiles, and decorative elements.
- Top Left:** A detailed site plan showing the building's location within its context, including surrounding streets and other structures.
- Top Middle:** A large floor plan of the building, showing room layouts, corridors, and service areas. A central vertical strip of material samples is overlaid on this plan.
- Top Right:** A section titled "fire prevention strategy" showing a cross-section of the building with red highlights indicating fire-resistant elements and safety features.
- Middle:** A central vertical strip of material samples, including a yellow wall, a white wall, and a wooden panel.
- Bottom Left:** A section titled "greenstar" showing a green building certification logo and a table of performance metrics. The table includes columns for "Category", "Target", "Actual", and "Score".
- Bottom Middle:** A section titled "greenstar" showing a green building certification logo and a table of performance metrics. The table includes columns for "Category", "Target", "Actual", and "Score".
- Bottom Right:** A section titled "fire prevention strategy" showing a cross-section of the building with red highlights indicating fire-resistant elements and safety features.



CITIZEN CONNECT

