

chapter 9
DESIGN RESOLUTION + FINAL DRAWINGS



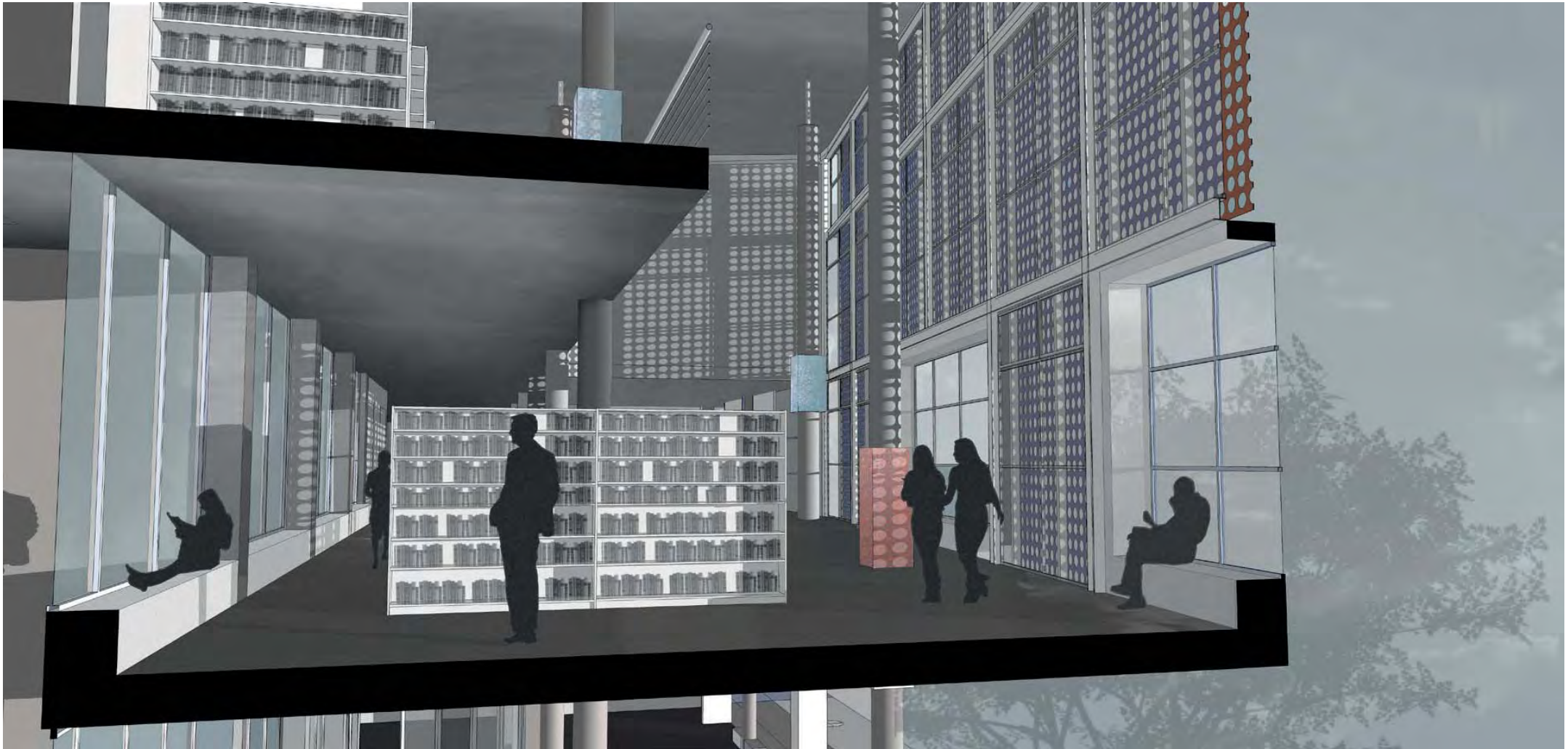
Perspective/
North West View



Perspective/
Public space - public realm

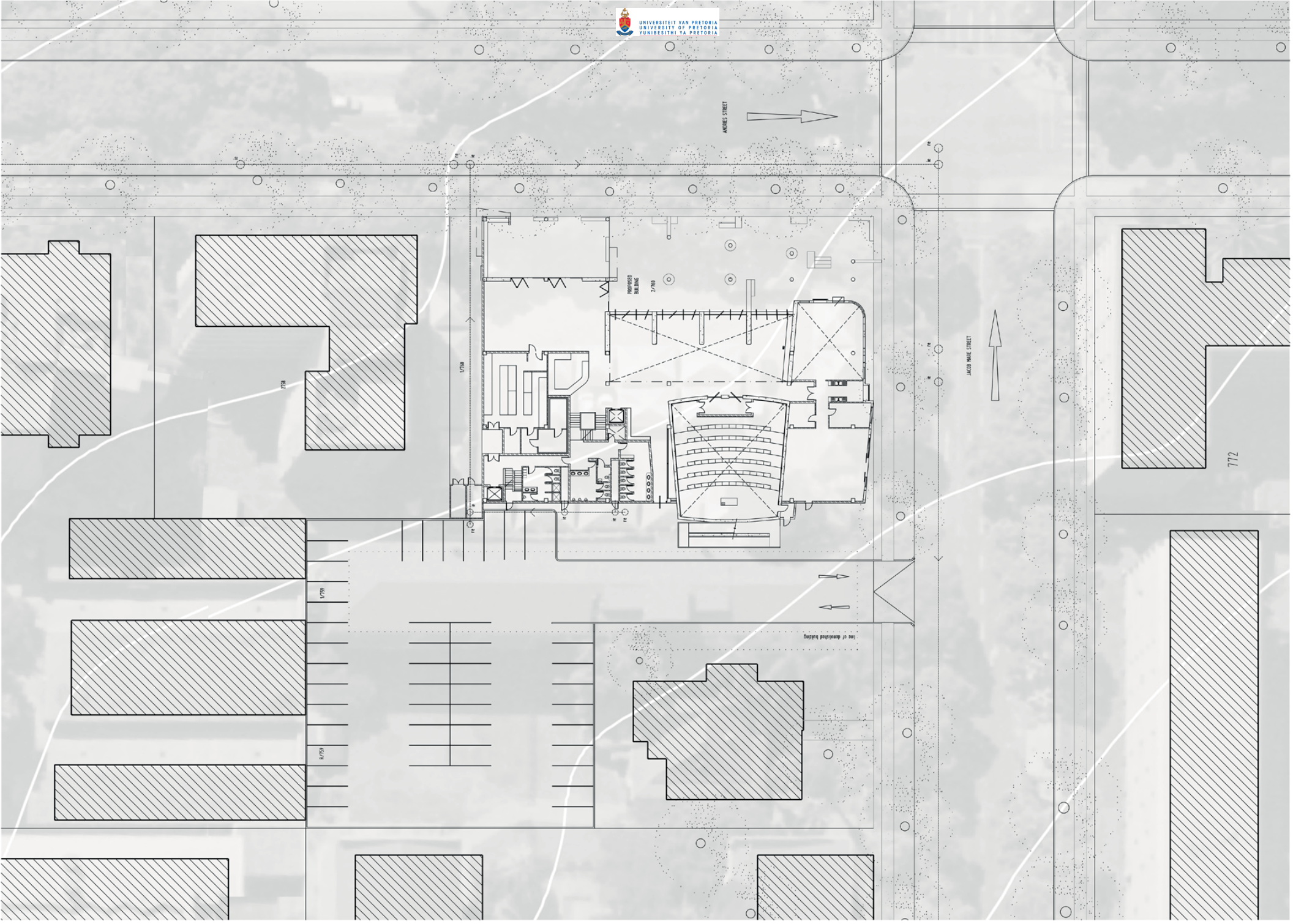


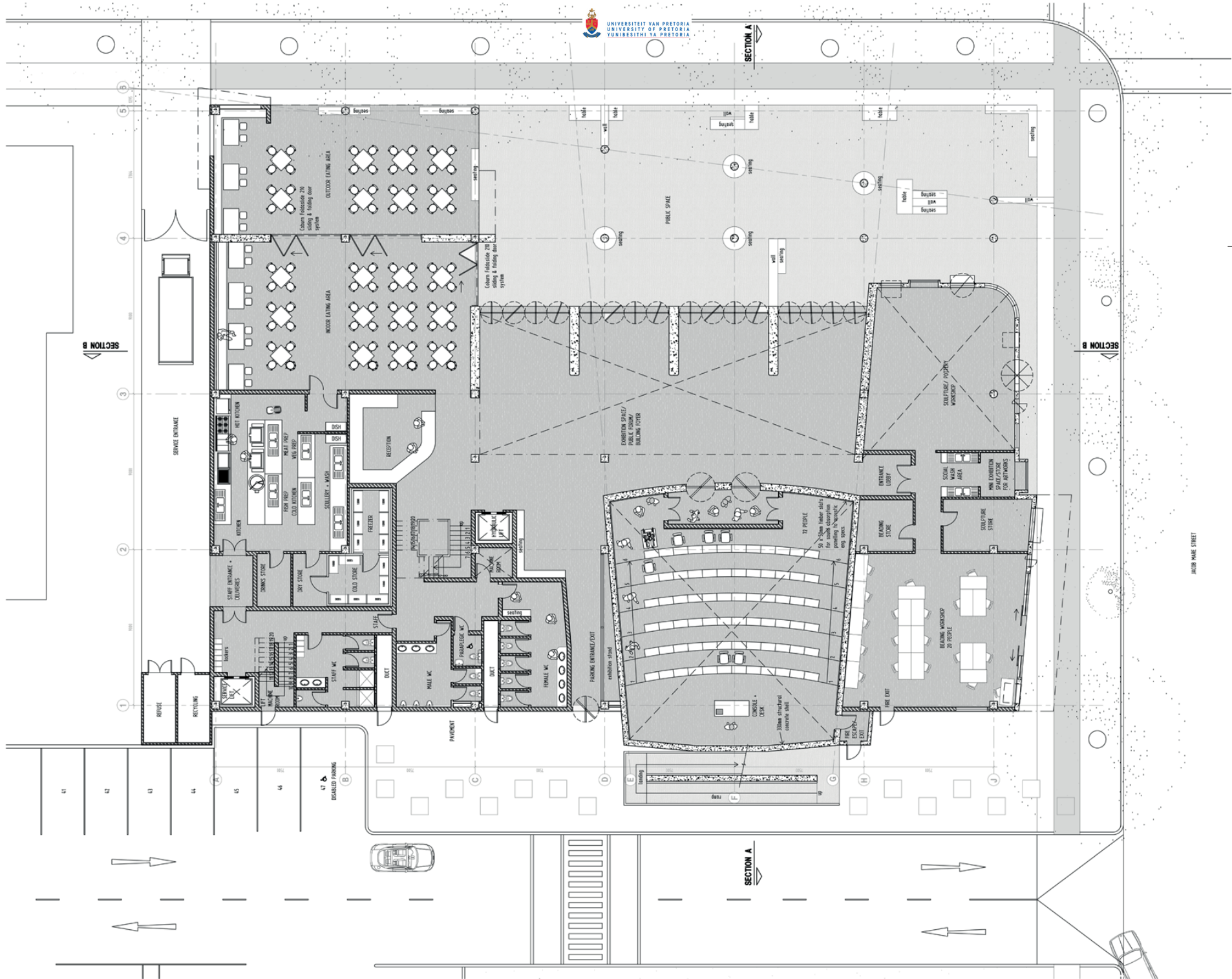
Perspective/
Sectional perspective through studios, open air workshop,
lecture hall, library, exhibition space + public space





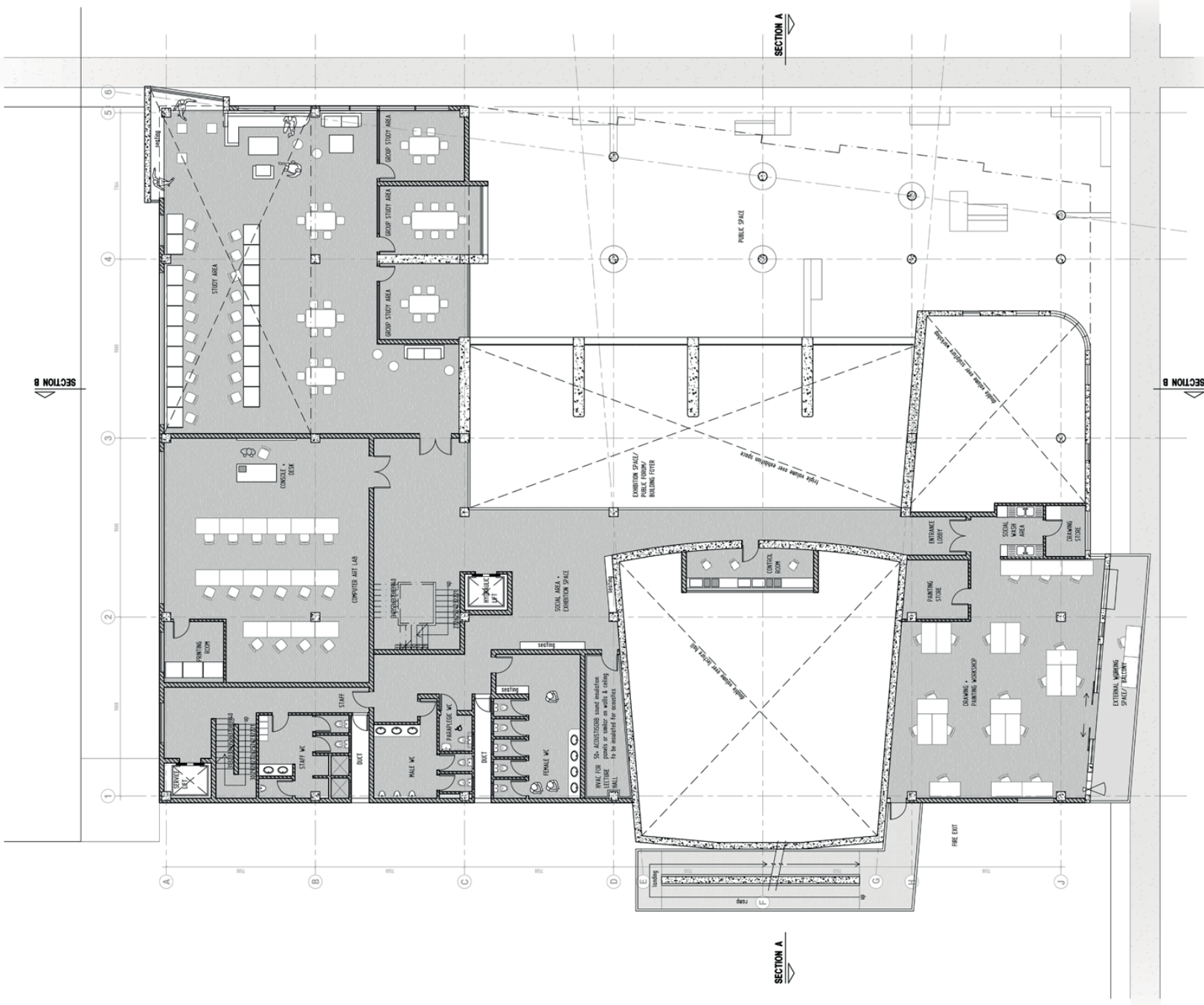
Perspective/
Sculpture Workshop





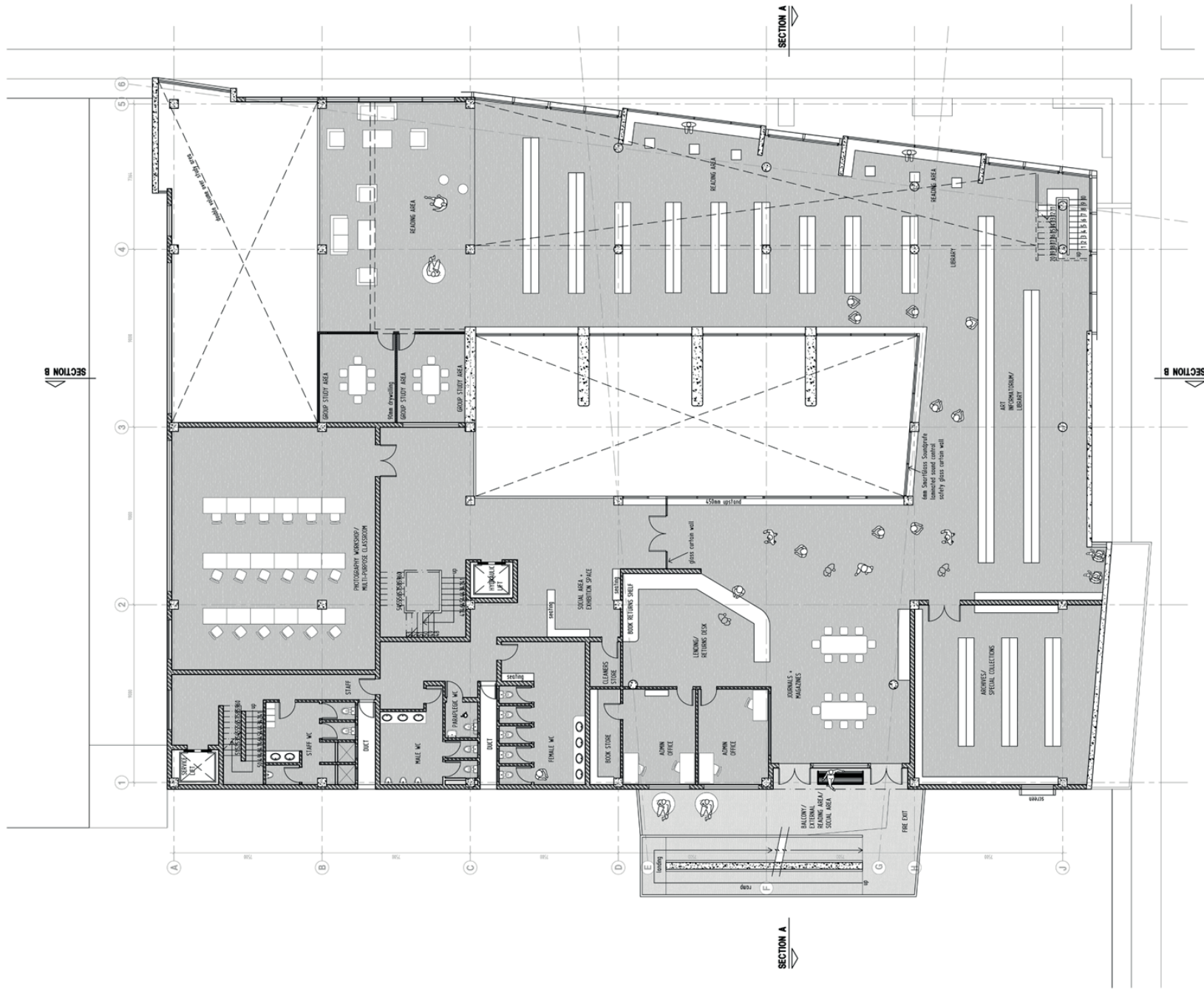
Ground Floor Plan
Scale 1:100





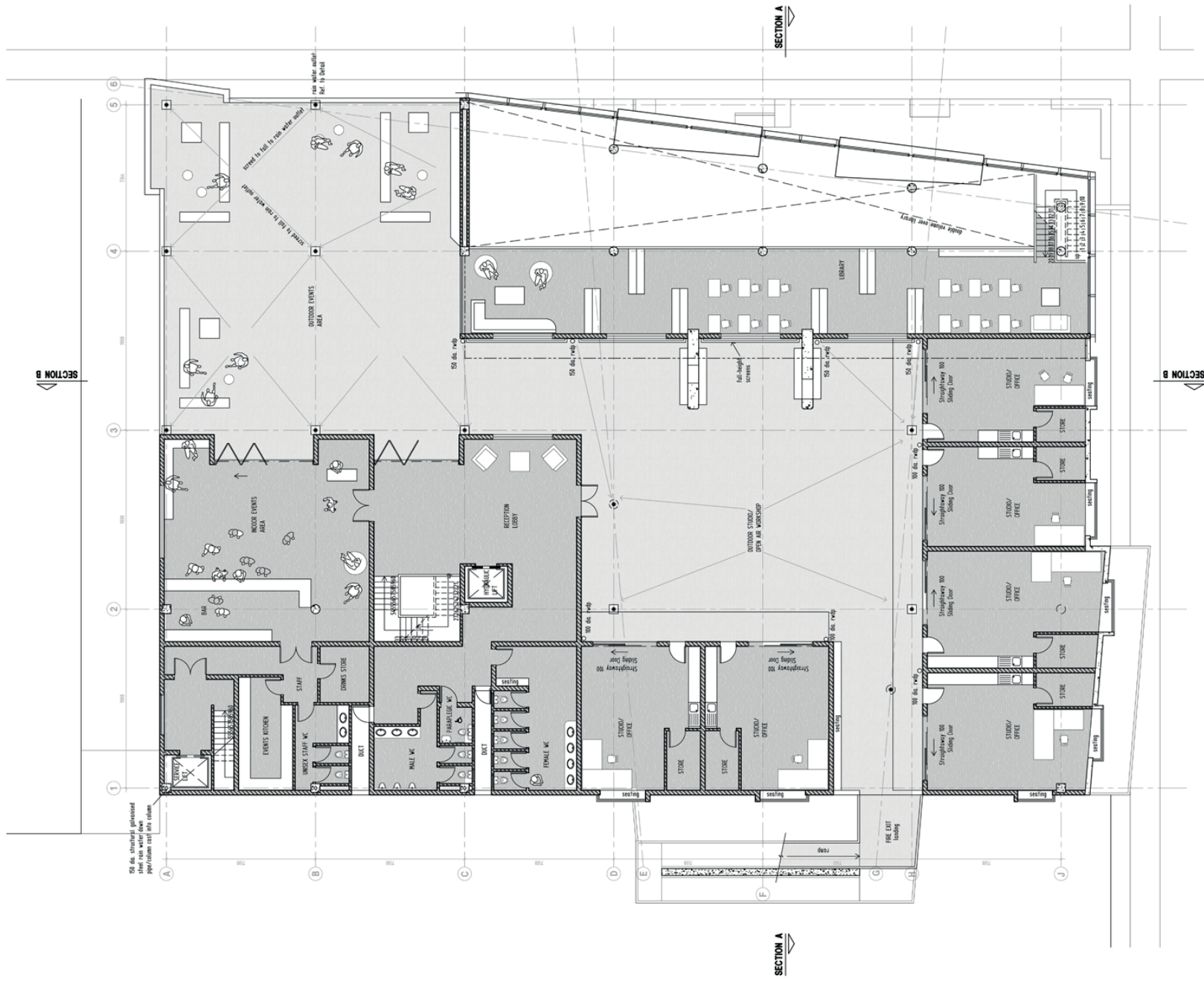
First Floor Plan
Scale 1:100





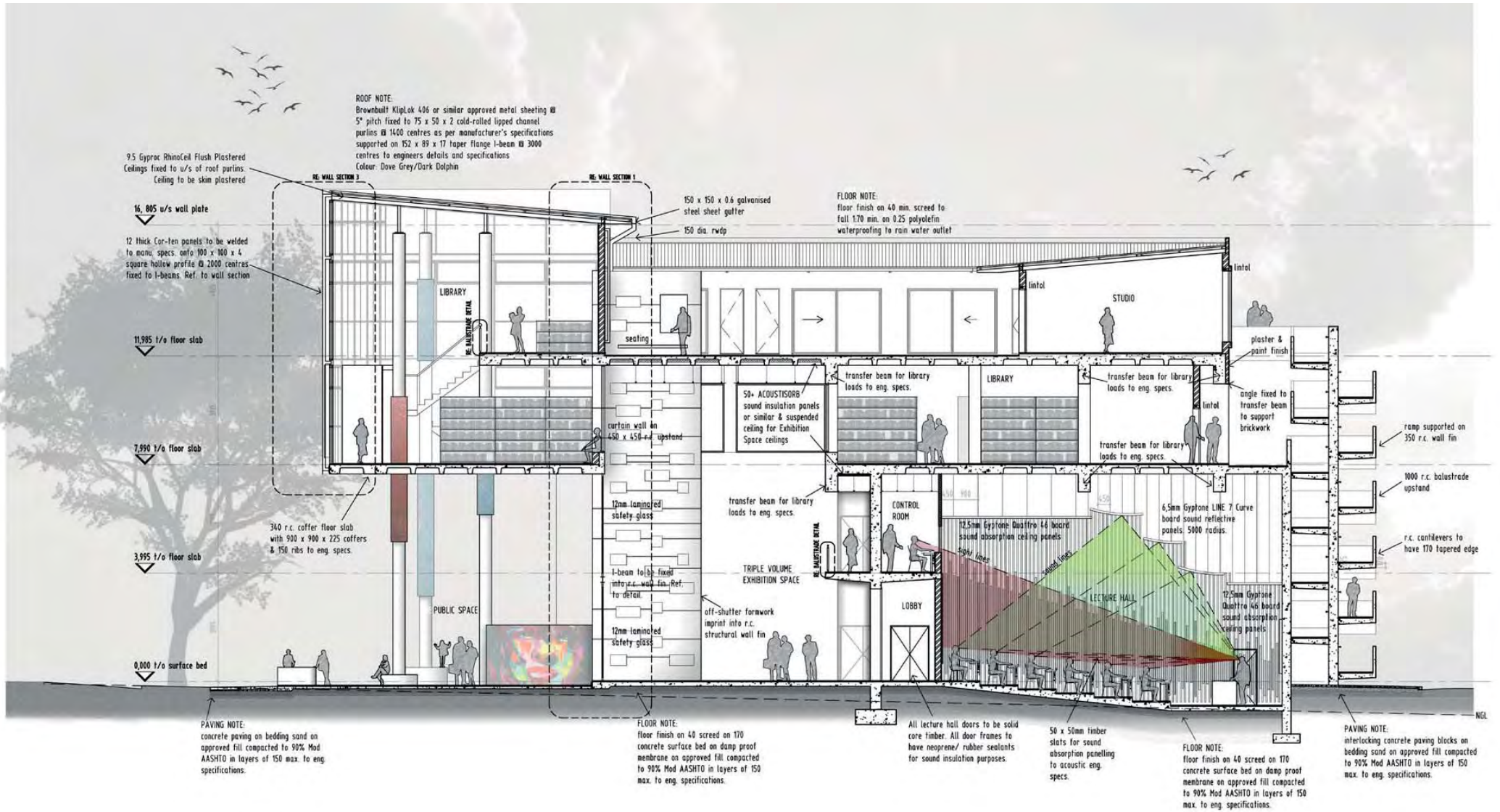
Third Floor Plan
Scale 1:100





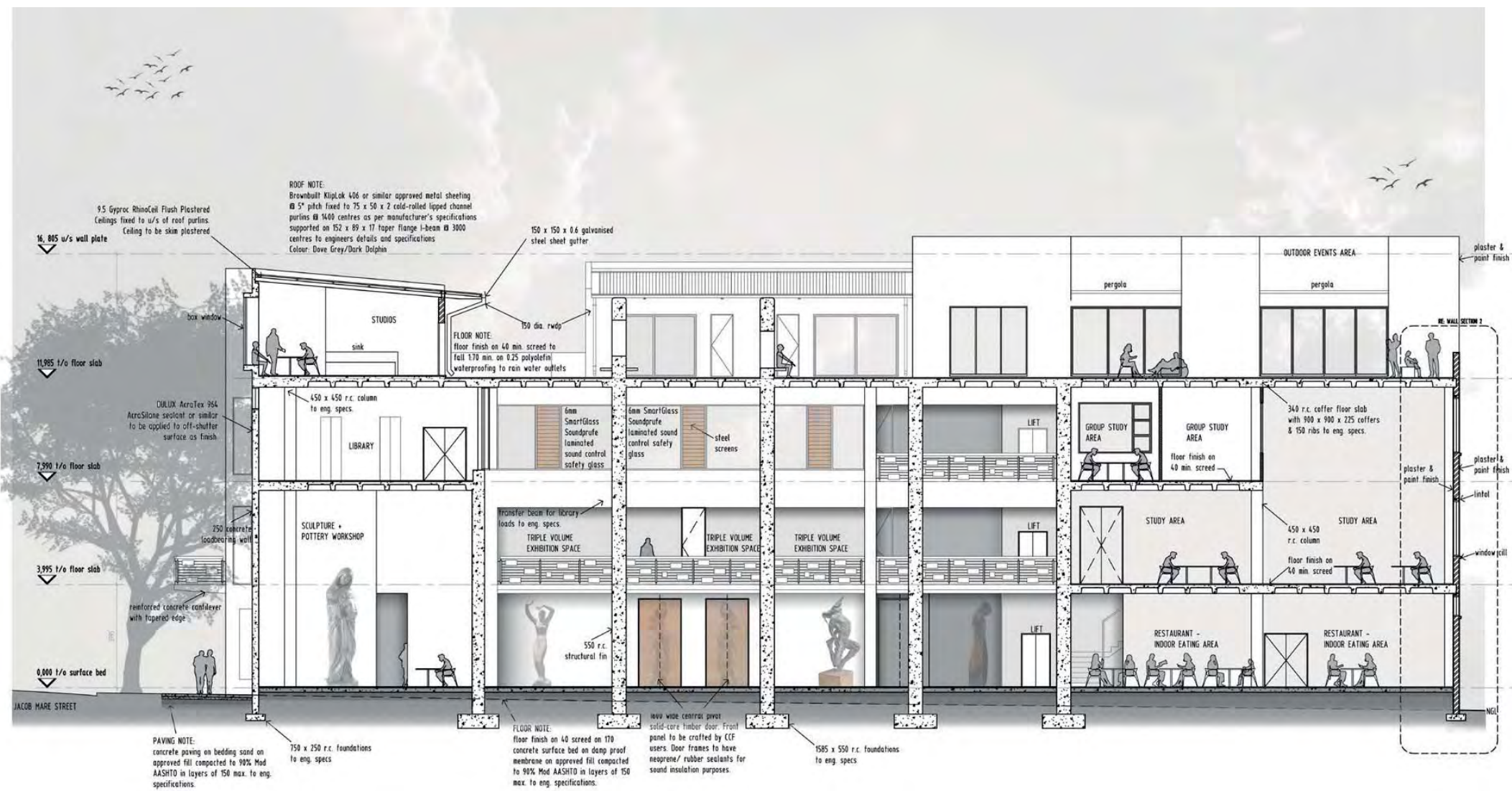
Second Floor Plan
Scale 1:100





Section A-A





Section B-B





East elevation





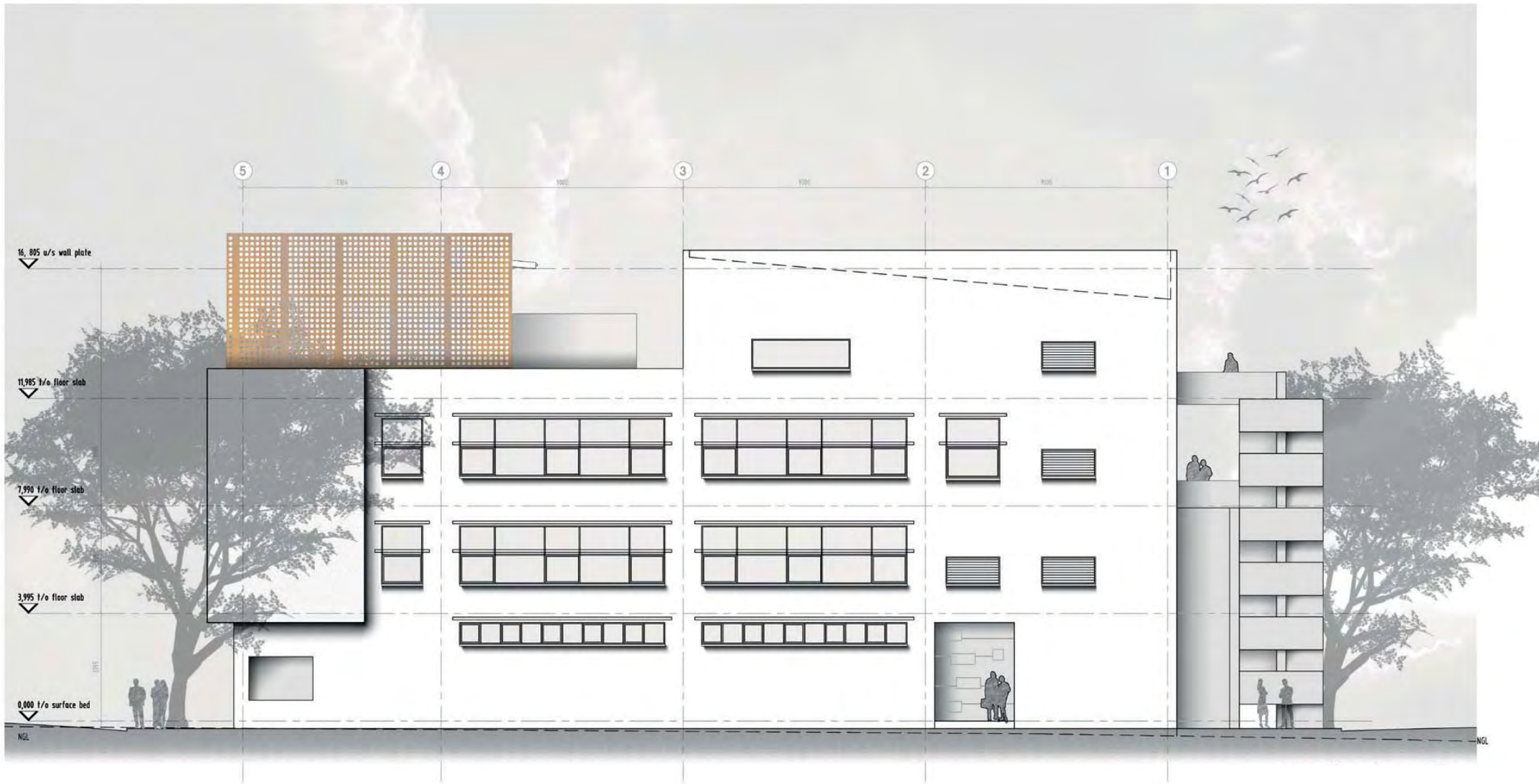
South elevation





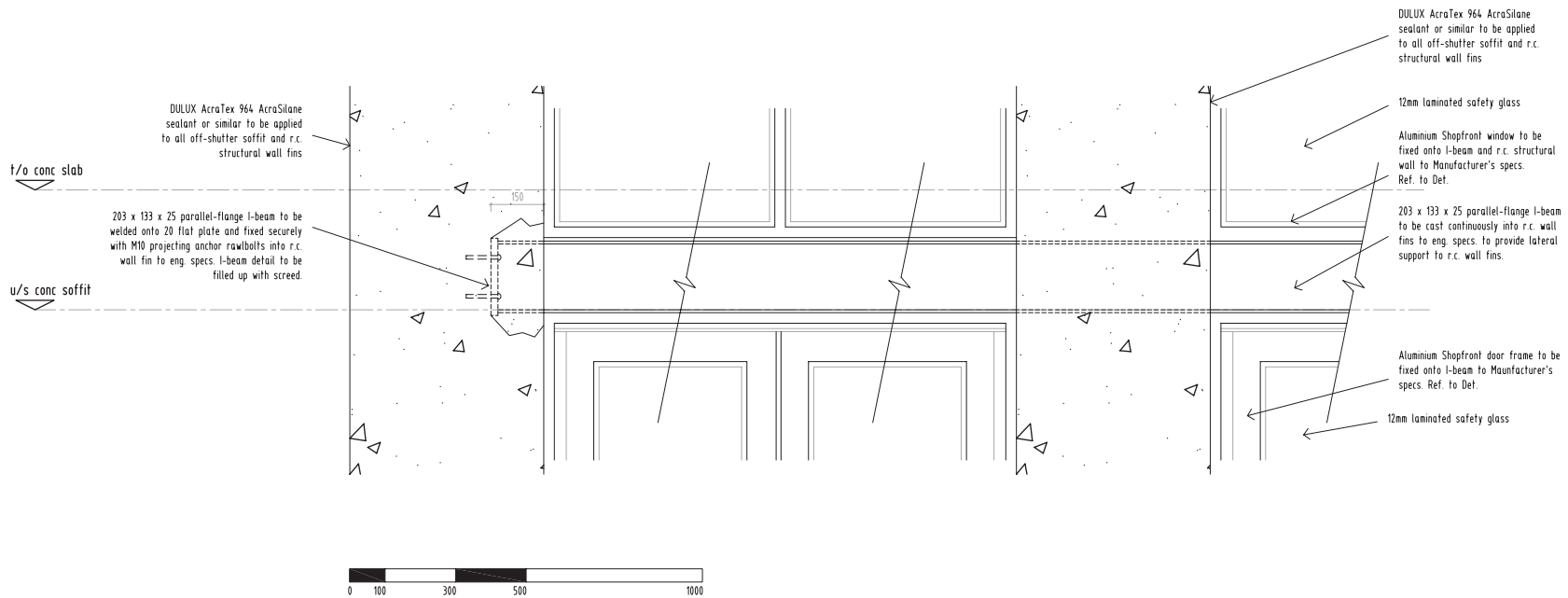
West elevation





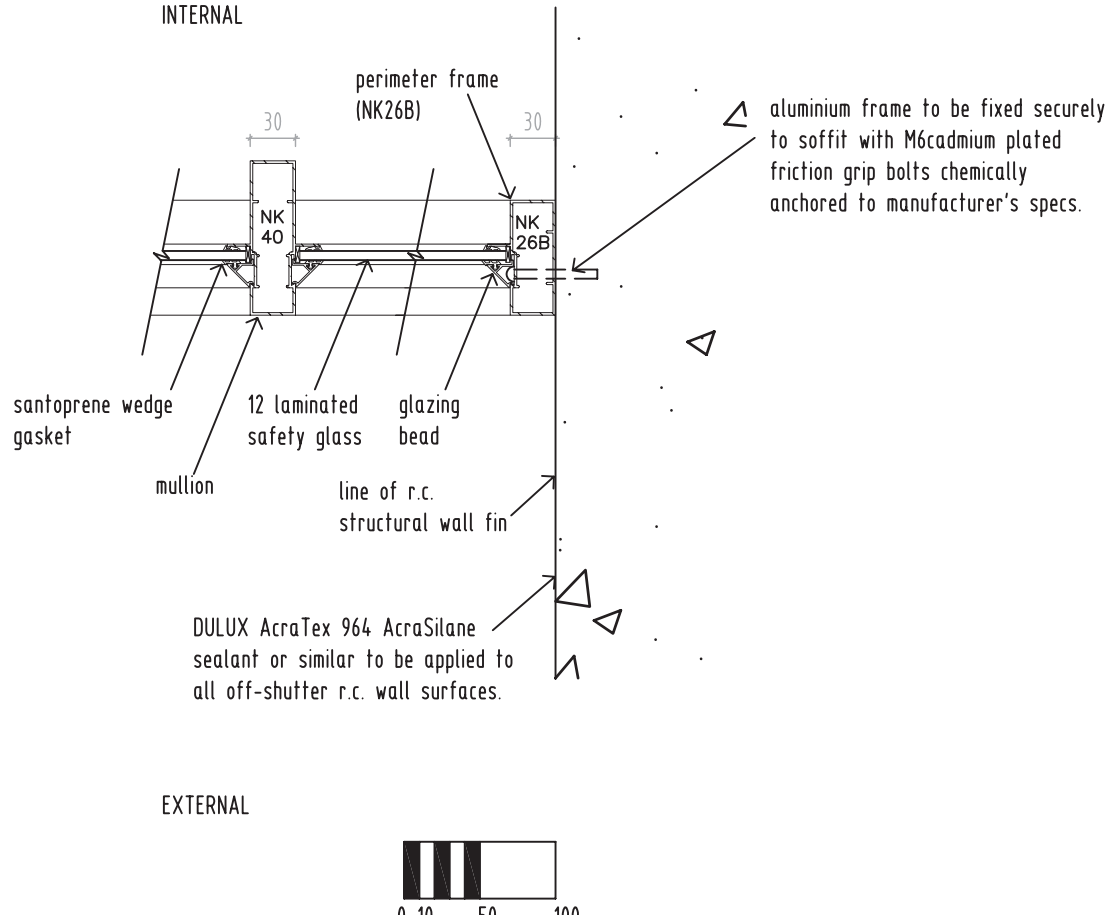
North elevation





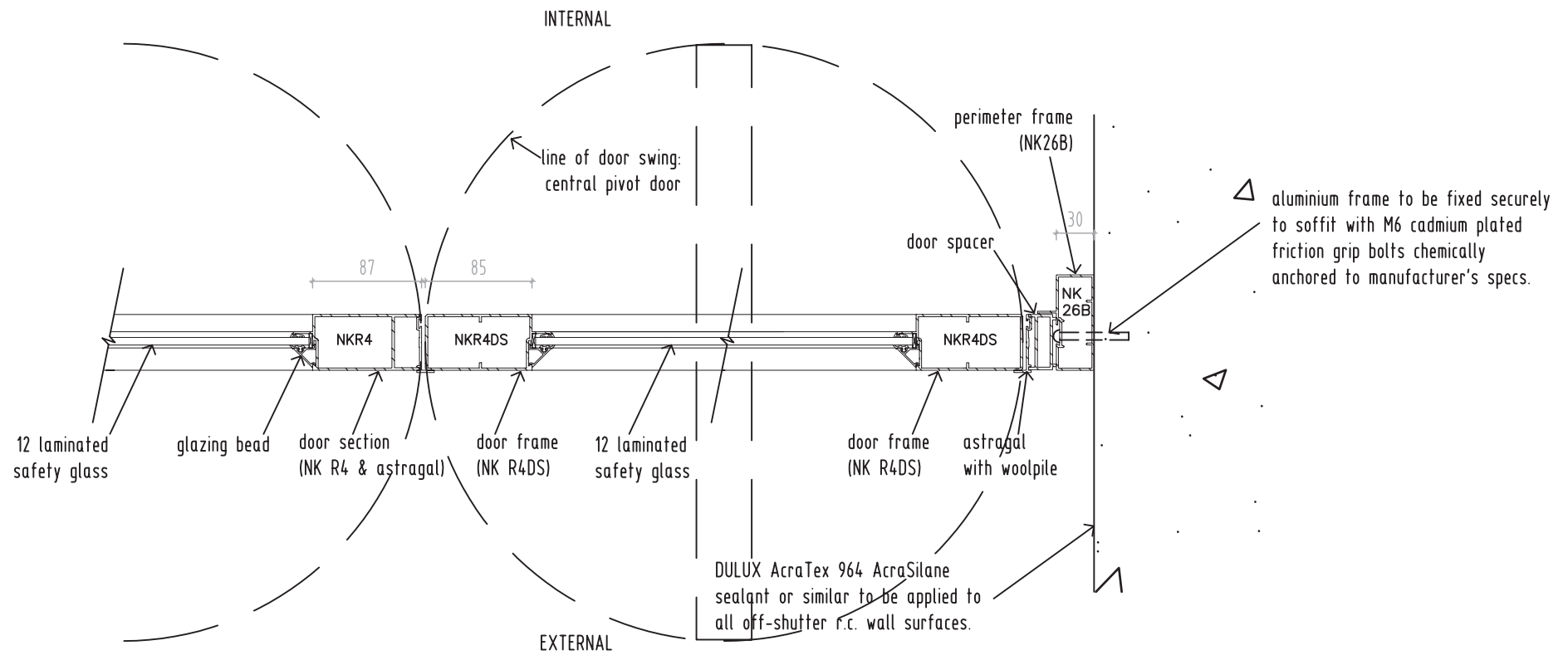
Shopfront + I-beam Sectional Elevation
Scale 1:5

Aluminium Shopfront Window + Door Details



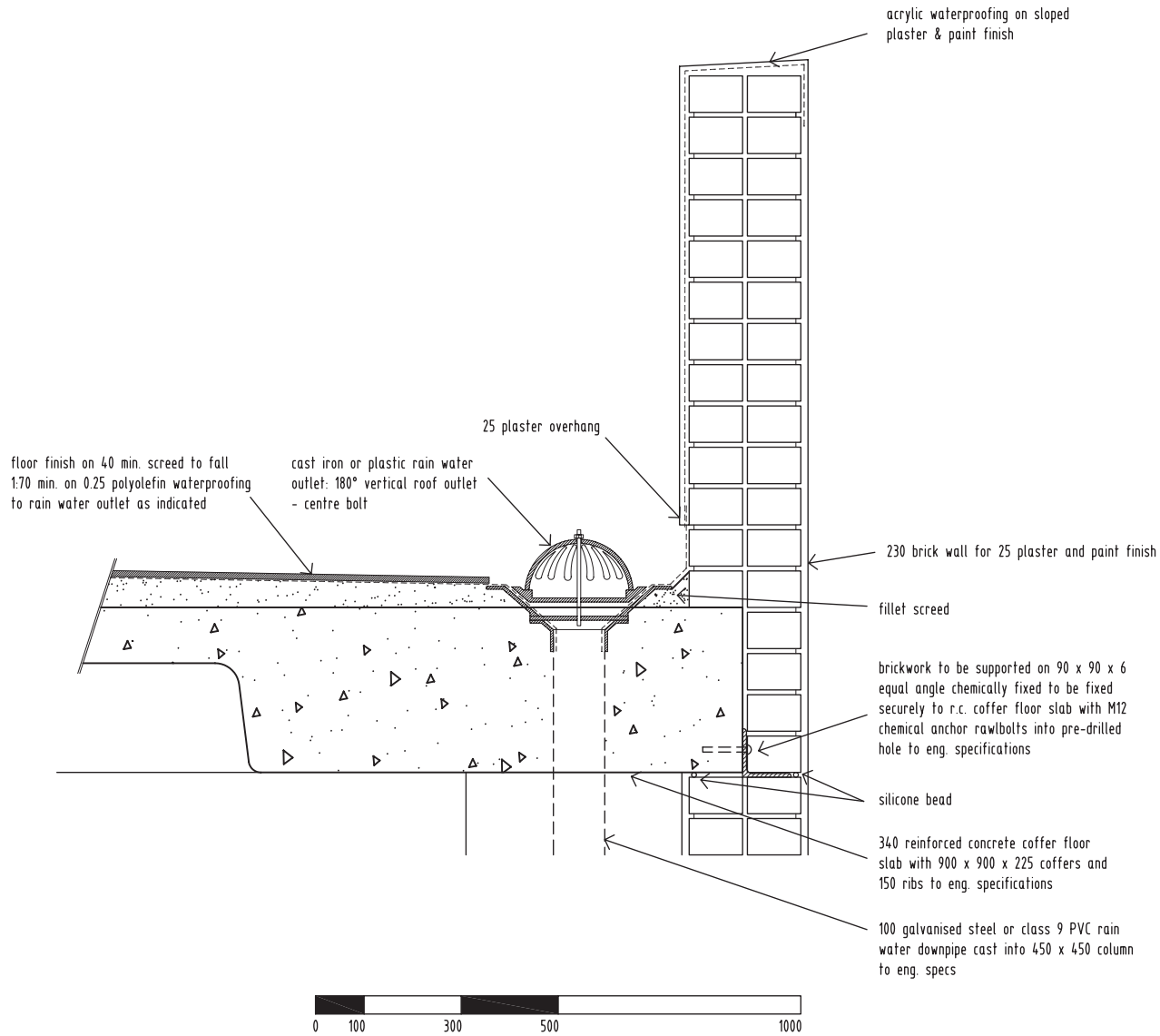
Detail 1
Shopfront Detail Plan - First Floor
Scale 1:5

Aluminium Shopfront Window + Door Details



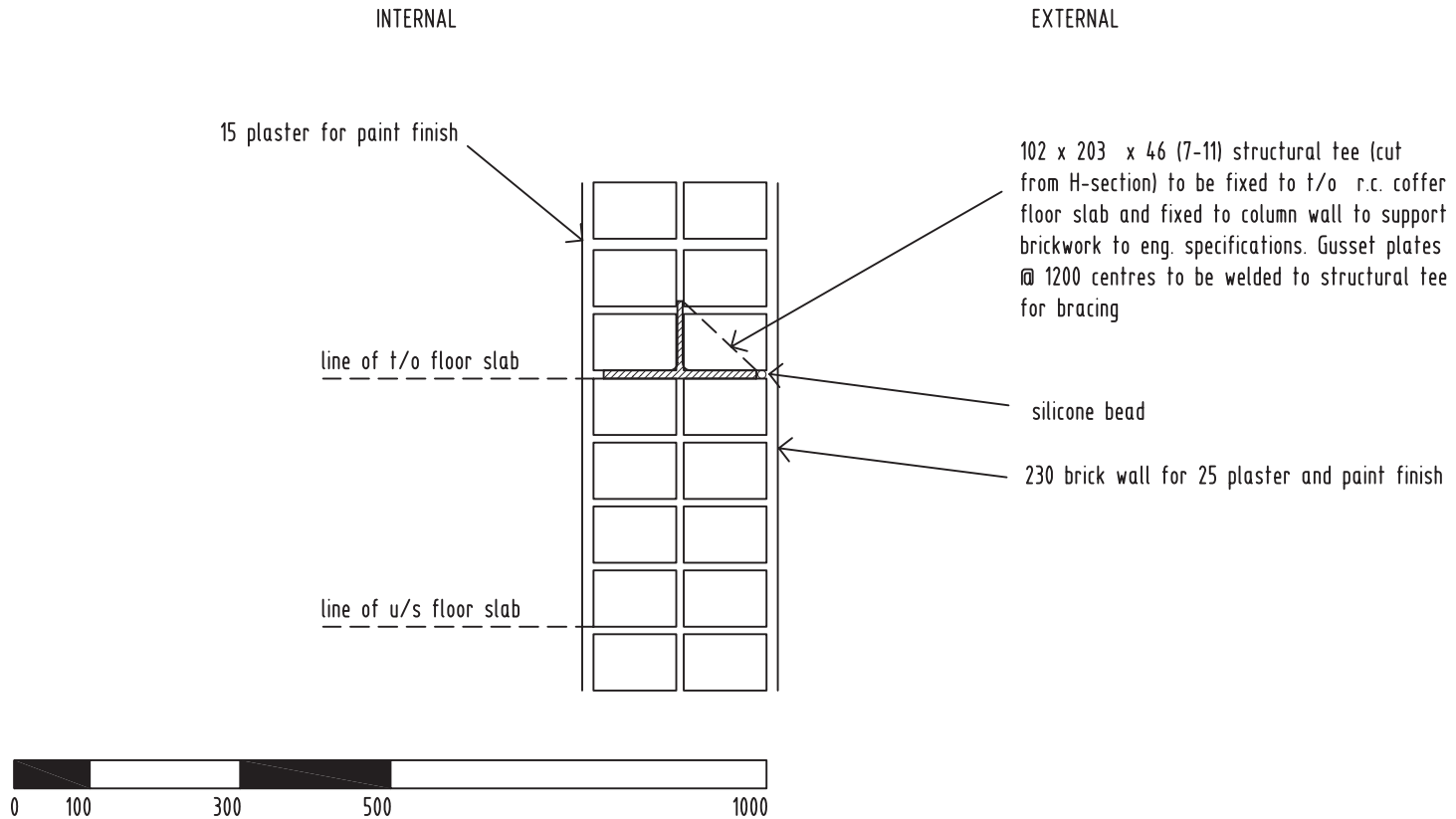
Detail 2
Shopfront Detail Plan - Ground Floor
Scale 1:5

Aluminium Shopfront Window + Door Details



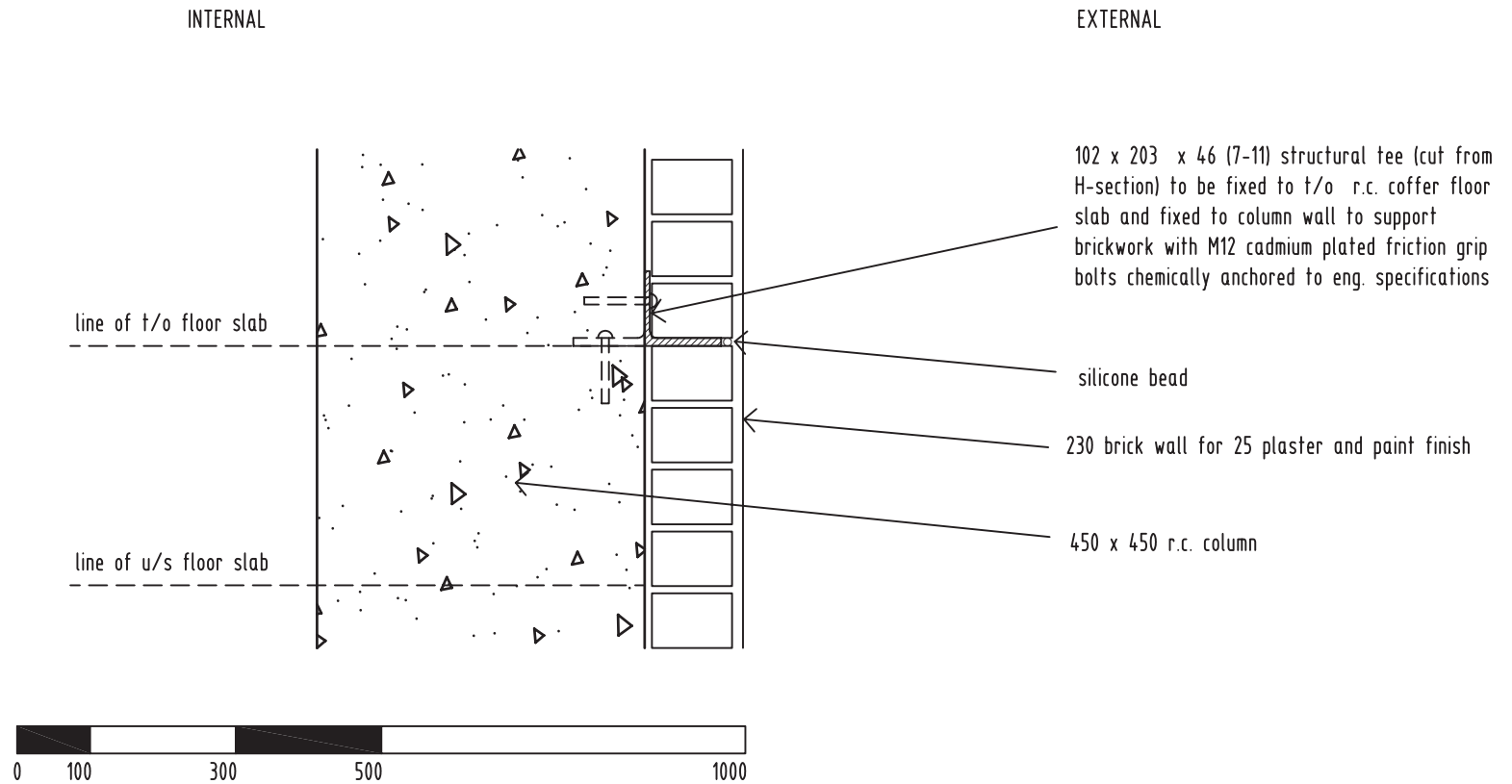
Detail 3
Scale 1:10

Wall Section 2



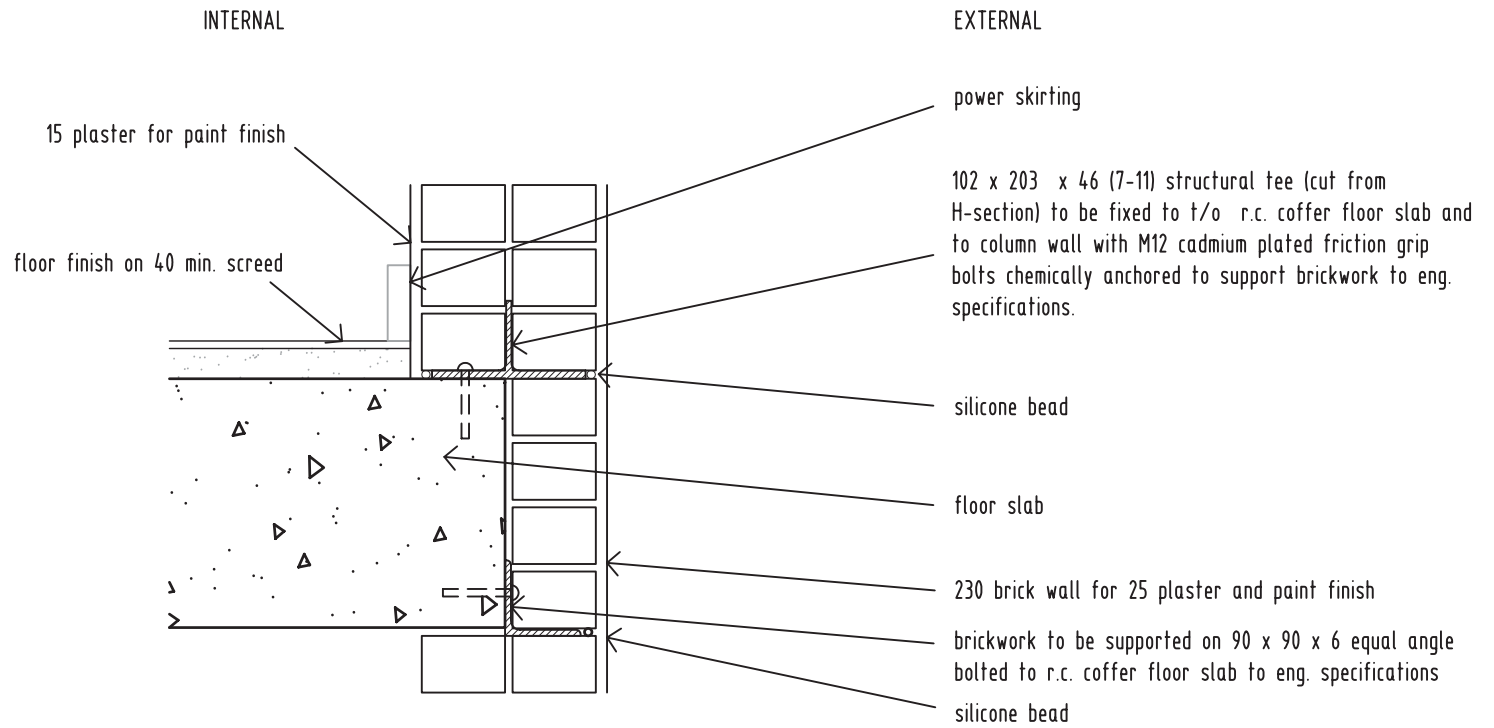
Detail 4
Angle supporting brickwork
Scale 1:10

Wall Section 2



Detail 4
Angle against column
Scale 1:10

Wall Section 2

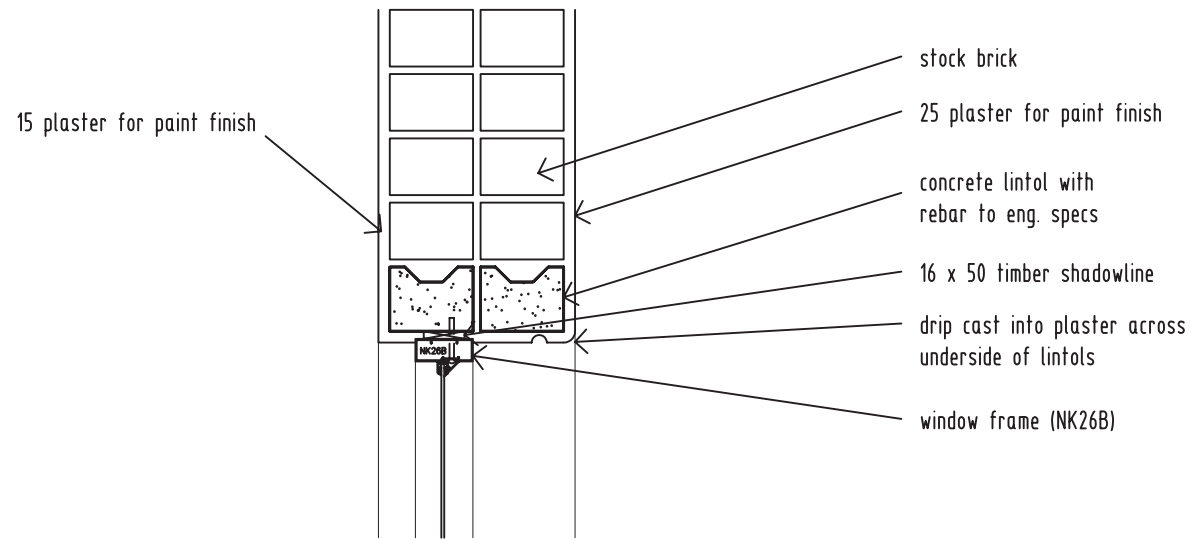


Detail 4
Angle on t/o floor slab
Scale 1:10

Wall Section 2

INTERNAL

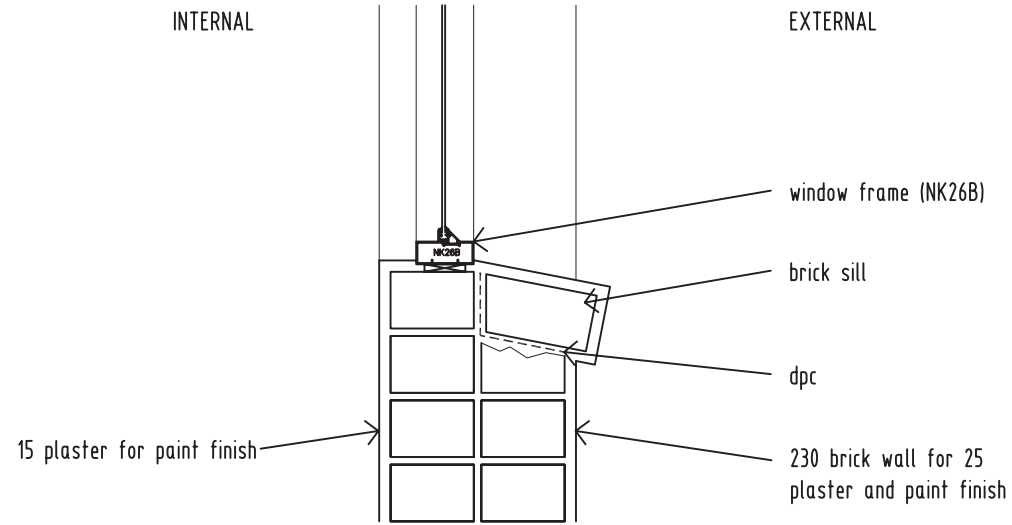
EXTERNAL



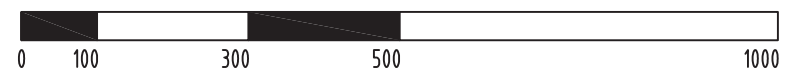
Detail 5
Scale 1:10

INTERNAL

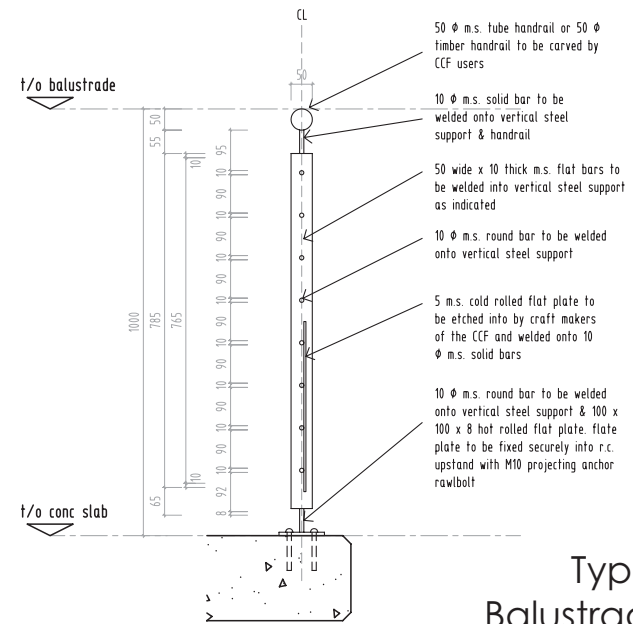
EXTERNAL



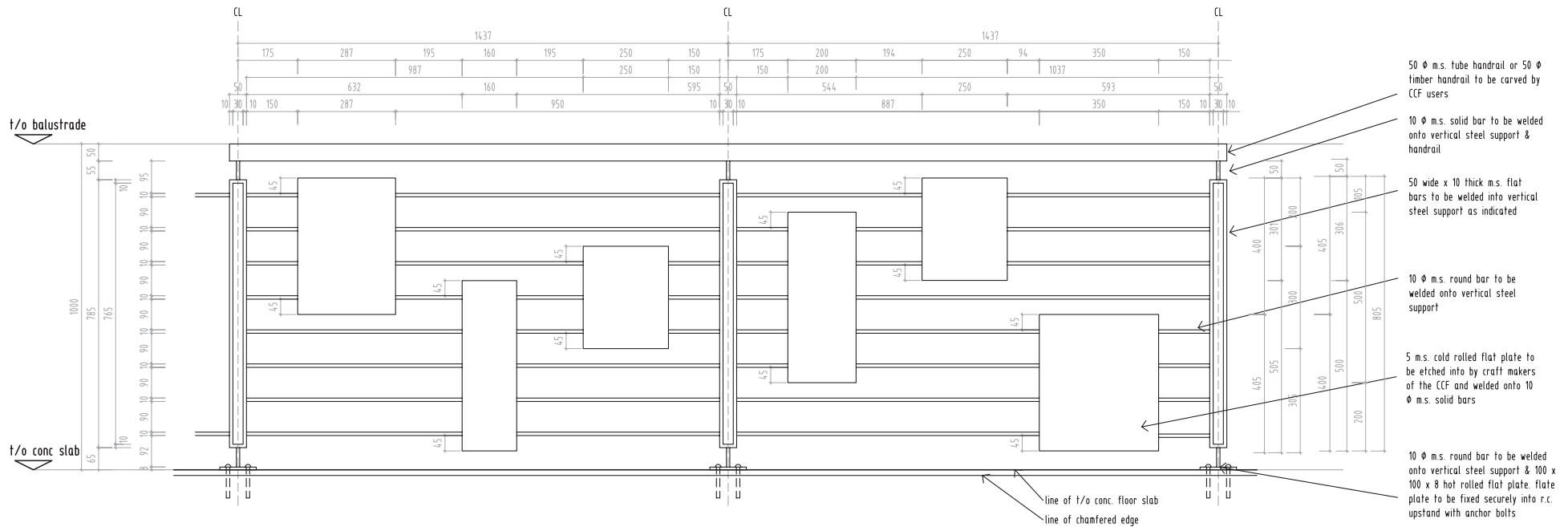
Detail 6
Scale 1:10



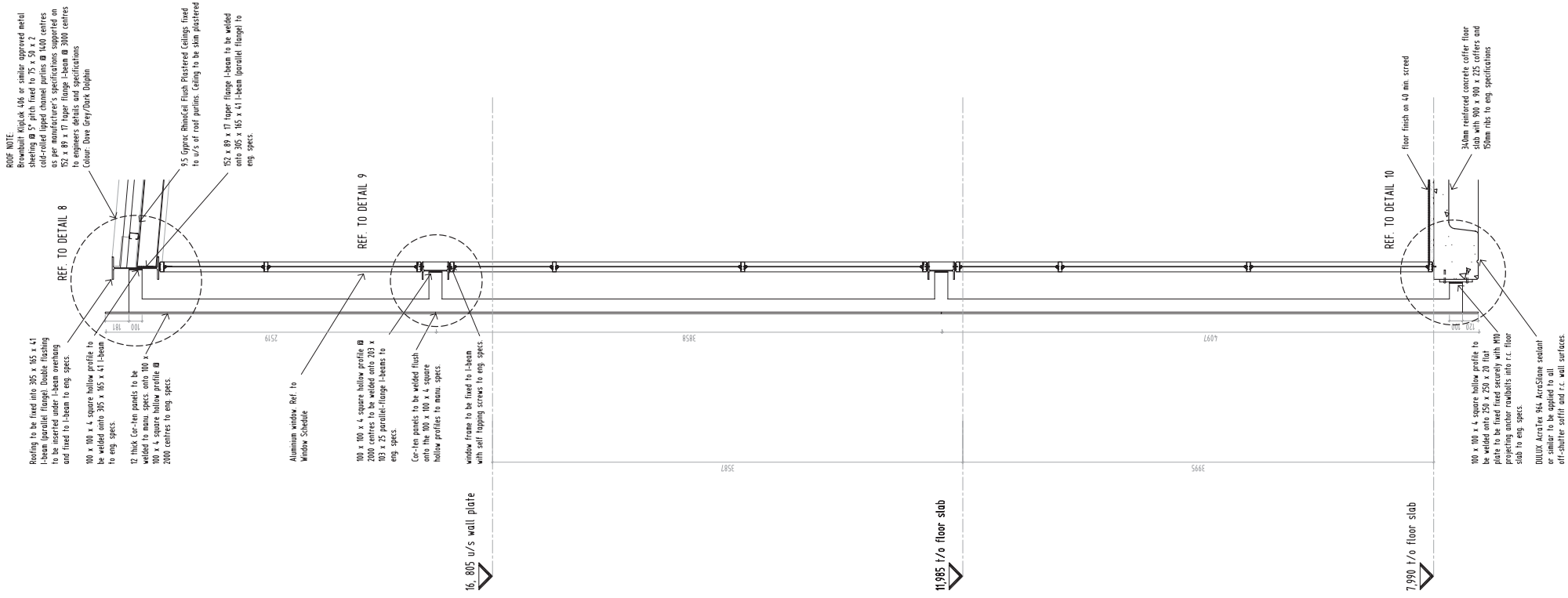
Wall Section 2



Detail 7
Typical Internal
Balustrade - Section



Detail 7
Typical Internal
Balustrade - Elevation

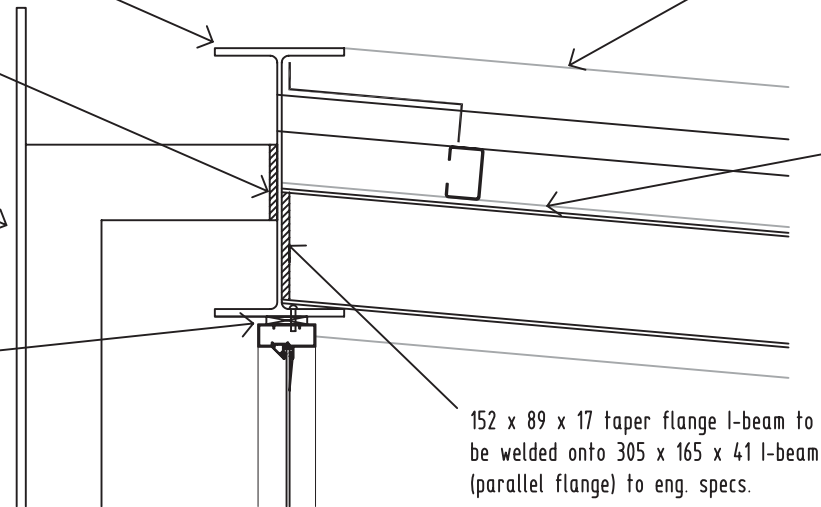


Roofing to be fixed into 305 x 165 x 41 I-beam (parallel flange). Double flashing to be inserted under I-beam overhang and fixed to I-beam to eng. specs.

100 x 100 x 4 square hollow profile to be welded onto 305 x 165 x 41 I-beam to eng. specs.

12 thick Cor-ten panels to be welded to manu. specs. onto 100 x 100 x 4 square hollow profile @ 2000 centres to eng. specs.

window frame to be fixed to I-beam with self tapping screws to eng. specs.



ROOF NOTE:

Brownbuilt KlipLok 406 or similar approved metal sheeting @ 5° pitch fixed to 75 x 50 x 2 cold-rolled lipped channel purlins @ 1400 centres as per manufacturer's specifications supported on 152 x 89 x 17 taper flange I-beam @ 3000 centres to engineers details and specifications
Colour: Dove Grey/Dark Dolphin

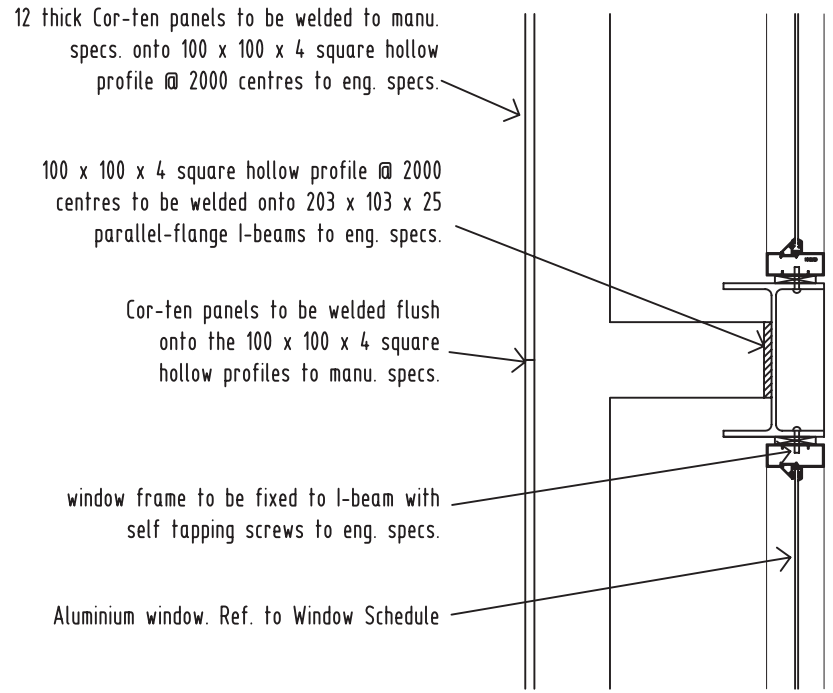
9.5 Gyproc RhinoCeil Flush Plastered Ceilings fixed to u/s of roof purlins. Ceiling to be skim plastered

152 x 89 x 17 taper flange I-beam to be welded onto 305 x 165 x 41 I-beam (parallel flange) to eng. specs.



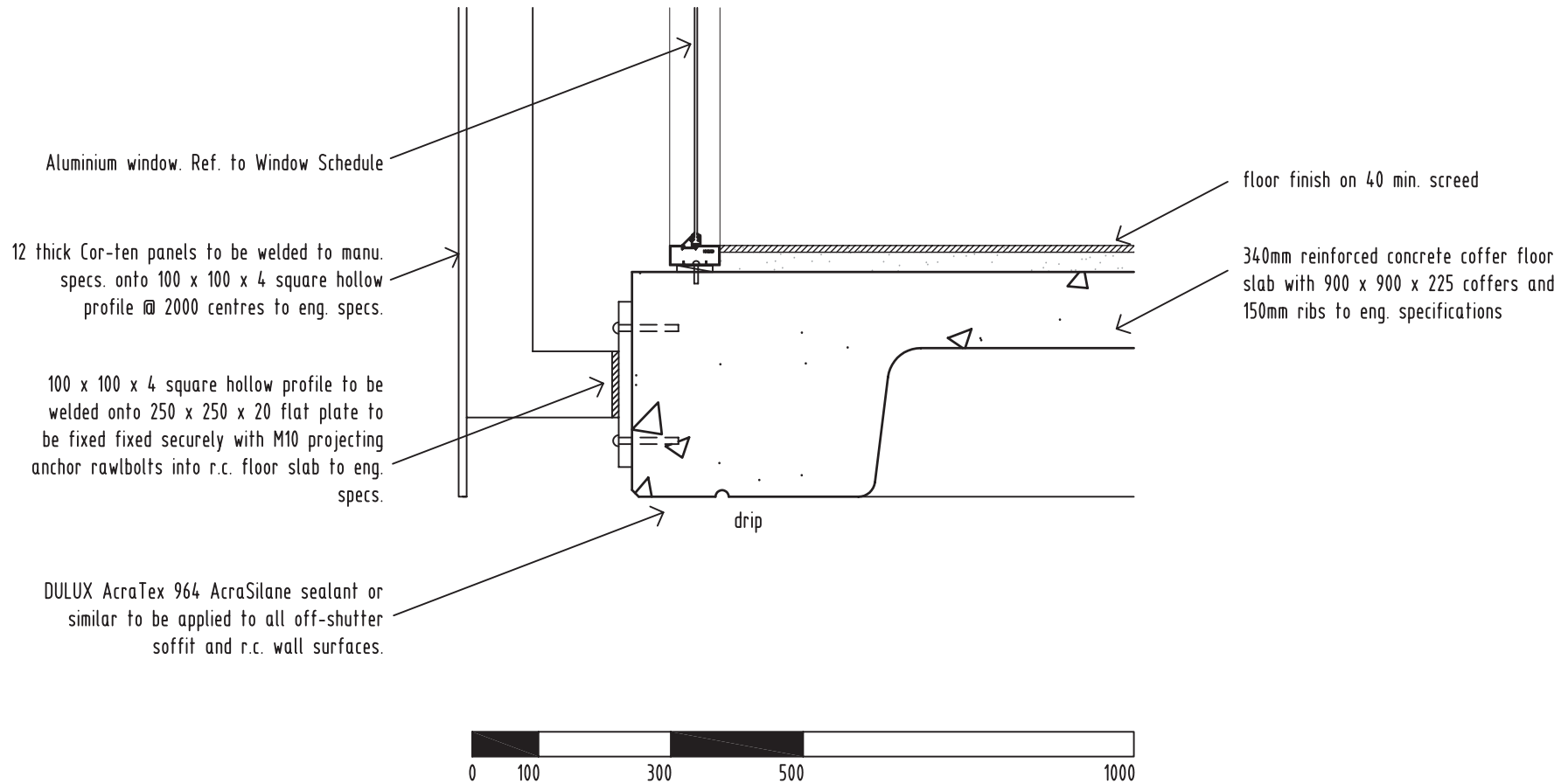
Detail 8
Scale 1:10

Wall Section 3



Detail 9
Scale 1:10

Wall Section 3

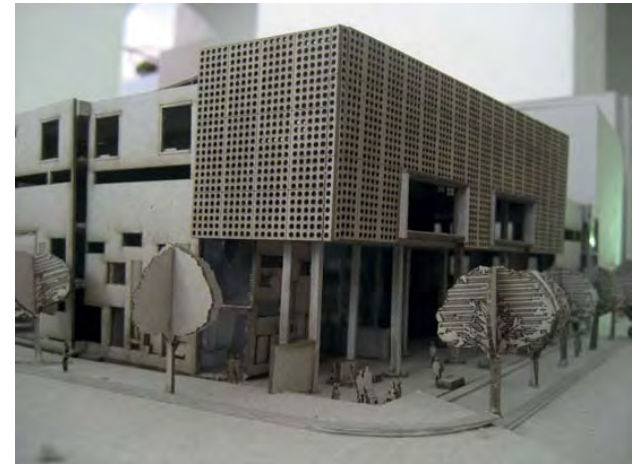
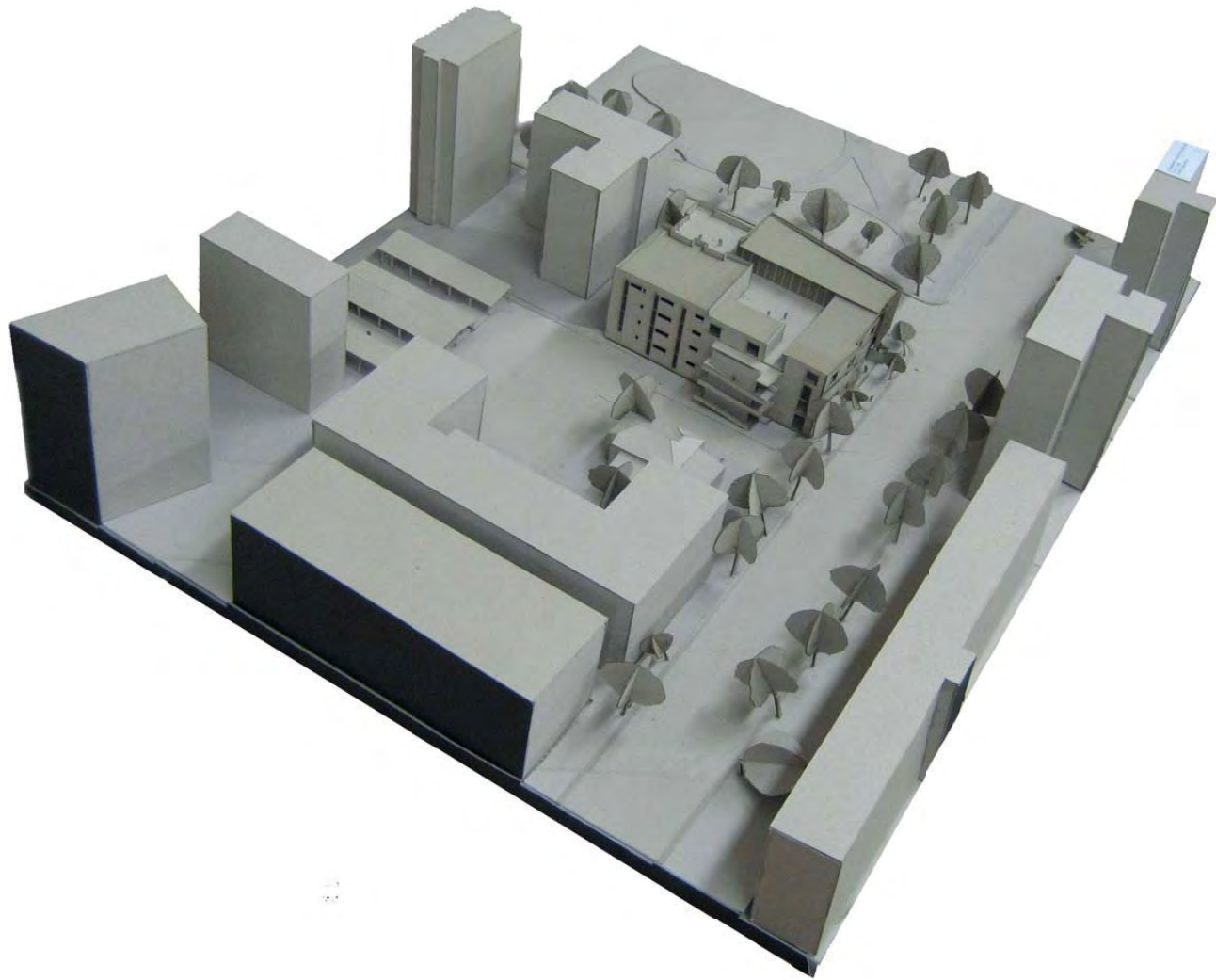


Detail 10
Scale 1:10

Wall Section 3



Model



A COMMUNITY CREATIVITY FACILITY

BURGERS PARK FRAMEWORK

-  _ PRODUCTION OF ART
-  _ EXPOSURE TO ART
-  _ EDUCATION OF ART

Urban Problems Identified within Study Area

- 1. Missing street termination
- 2. Missing street - Redwood street intersection
- 3. Overlap within precinct
- 4. Overlap between buildings
- 5. Publicly owned and built walls
- 6. Inconsistent and unclear use
- 7. Trade along Jacob Mare street
- 8. Government Buildings
- 9. Block of townhouses
- 10. Public square
- 11. Public square - Paul Kruger street edge
- 12. Paul Kruger street
- 13. Informal off-street parking
- 14. Buildings close to Pretoria Station
- 15. Publicly owned building
- 16. Publicly owned building



Interventions + Opportunities

- 1. Missing street termination
- 2. Missing street - Redwood street intersection
- 3. Overlap within precinct
- 4. Overlap between buildings
- 5. Publicly owned and built walls
- 6. Inconsistent and unclear use
- 7. Trade along Jacob Mare street
- 8. Government Buildings
- 9. Block of townhouses
- 10. Public square
- 11. Public square - Paul Kruger street edge
- 12. Paul Kruger street
- 13. Informal off-street parking
- 14. Buildings close to Pretoria Station
- 15. Publicly owned building
- 16. Publicly owned building



Urban Design Proposal for Precinct

- 1. Missing street termination
- 2. Missing street - Redwood street intersection
- 3. Overlap within precinct
- 4. Overlap between buildings
- 5. Publicly owned and built walls
- 6. Inconsistent and unclear use
- 7. Trade along Jacob Mare street
- 8. Government Buildings
- 9. Block of townhouses
- 10. Public square
- 11. Public square - Paul Kruger street edge
- 12. Paul Kruger street
- 13. Informal off-street parking
- 14. Buildings close to Pretoria Station
- 15. Publicly owned building
- 16. Publicly owned building



Selected Sites within Framework

- 1. Gabriel van Wyk
- 2. George A. Pretorius
- 3. G. van der Merwe
- 4. Alexia Philippou
- 5. S. M. M. M. M.
- 6. M. M. M. M.



DESIGN APPROACH

An arts facility in the Pretoria CBD that allows for the production and creation of visual arts is required. The **theory** and the **concept** impact on the outcome of the proposed building by **encouraging interactivity** and **active participation** with its users so that a public interface is created with art.

ALEXIA PHILIPPOU
NOVEMBER 2011

CONTEXT + SITE



PRETORIA CBD
SOUTH AFRICA



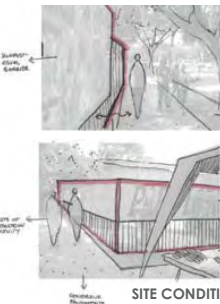
AERIAL PHOTO
PRETORIA CBD



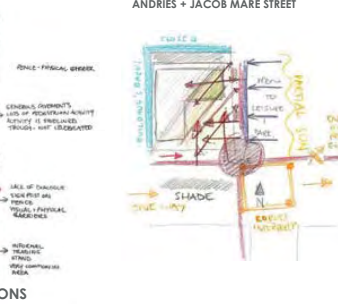
SITE
ANDRIES + JACOB MARE STREET



Supporting Posters



SITE CONDITIONS



SITE MAPPING +
APPROACH



DESIGN APPROACH

THEORY_ THE DERIVÉ

def.
encouraging the city user to become the controlling and active participant in their urban context through experimentation, participation and creativity...through encounters of organised spontaneity

CONCEPT_ INTERACTIVITY

def.
how to encourage a connection between the proposed building and the users and passers-by.

THEORY + CONCEPT IMPACT ON



THE PUBLIC REALM
- SIDEWALKS - STREETS - BUILDING
FOYERS - PUBLIC SQUARES -



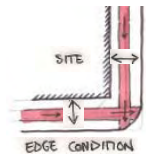
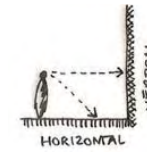
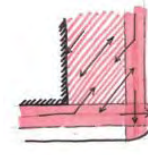
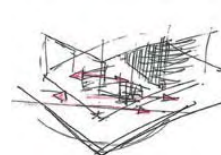
**VISUAL + PHYSICAL
ACCESS + CONNECTIONS**



IMPROMPTU ENCOUNTERS

HOW?

- SPATIAL MANIPULATION - PROGRAMME PLACEMENT - HORIZONTAL + VERTICAL SURFACE PLANE TREATMENT - INTERACTIONS IN THE PUBLIC REALM - MOVEMENT THROUGH SITE + THE PUBLIC REALM - TREATMENT OF THE EDGE CONDITION -



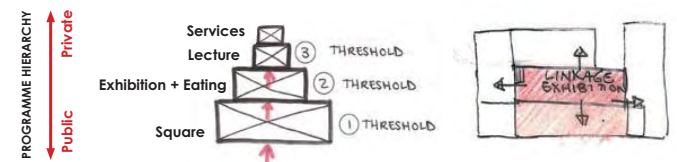
DESIGN APPROACH

- HOW TO ENCOURAGE EXCITING INTERACTIONS WITHIN THE BUILDING BETWEEN THE USERS + ART
- HOW TO ALLOW FOR ACCIDENTAL/IMPROMPTU ENCOUNTERS WITH ART
- HOW TO ENCOURAGE A RELATIONSHIP WITH ART THROUGH THE APPROACH TO THE HORIZONTAL + VERTICAL SURFACE PLANES

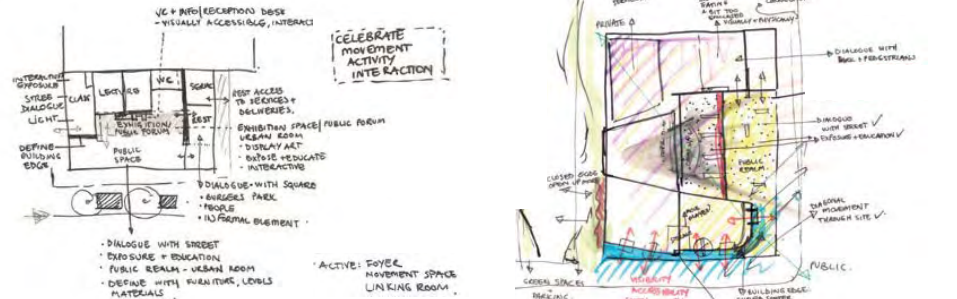
PARTI-DIAGRAM



PROGRAMME + SPATIAL PLANNING APPROACH



GROUND FLOOR + SPATIAL PLANNING



DESIGN DEVELOPMENT

ORIGINAL PROPOSAL



MODEL 1



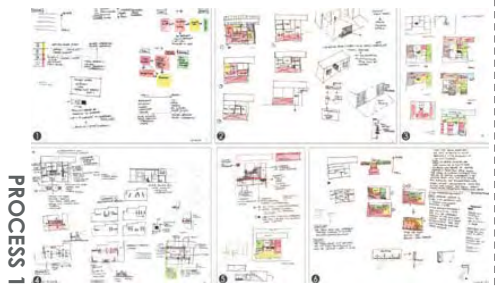
MODEL 2



MODEL 3



MODEL 4



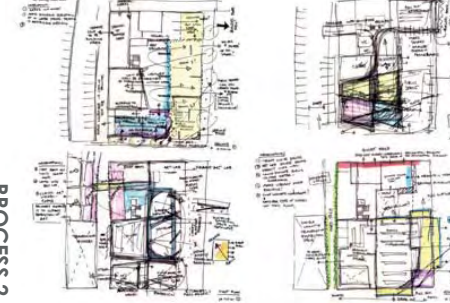
PROCESS 1



PROCESS 1



PROCESS 1



PROCESS 2

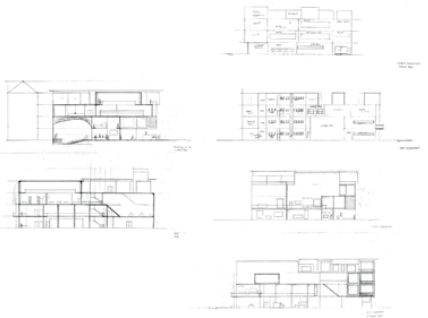


PROCESS 2



PROCESS 3

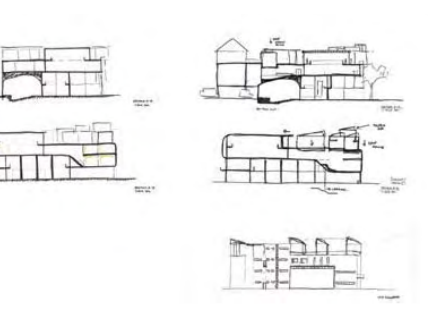
PROCESS 3



PROCESS 4



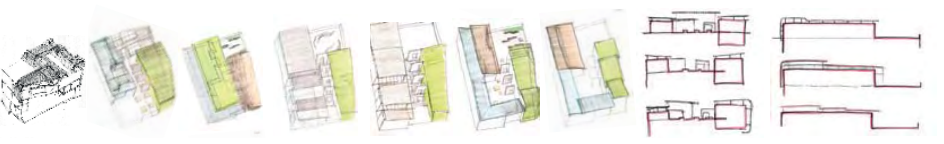
PROCESS 4



PROCESS 5

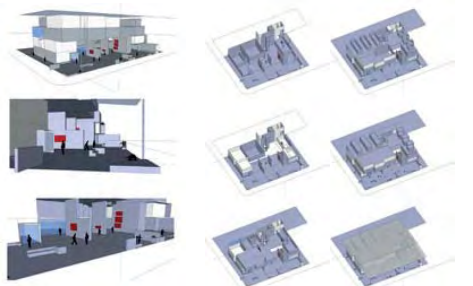


PROCESS 6



DESIGN DEVELOPMENT

PROCESS 3



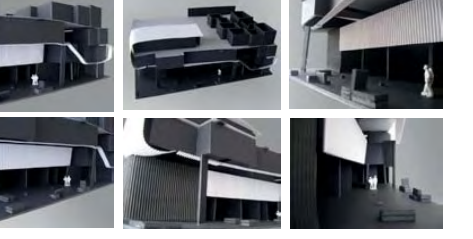
PROCESS 4



PROCESS 4



PROCESS 5



DESIGN DEVELOPMENT

ORIGINAL PROPOSAL



MODEL 1



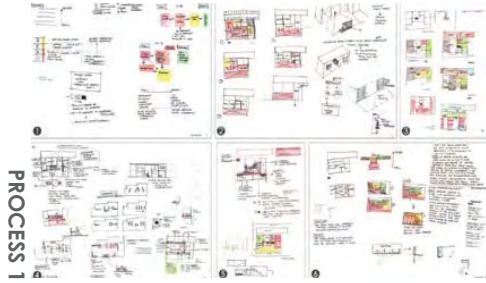
MODEL 2



MODEL 3



MODEL 4



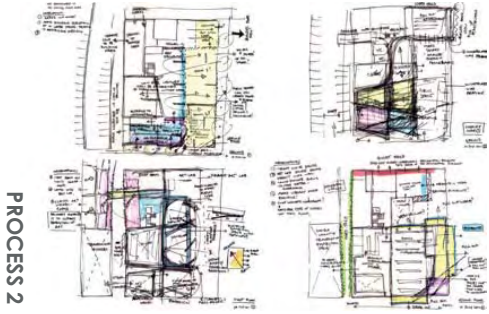
PROCESS 1



PROCESS 1



PROCESS 1



PROCESS 2

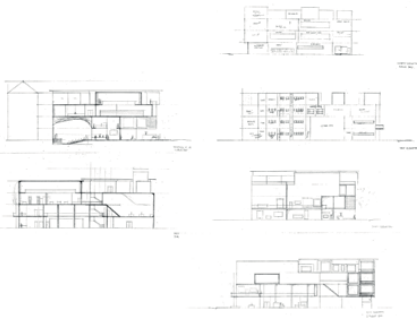


PROCESS 2



PROCESS 3

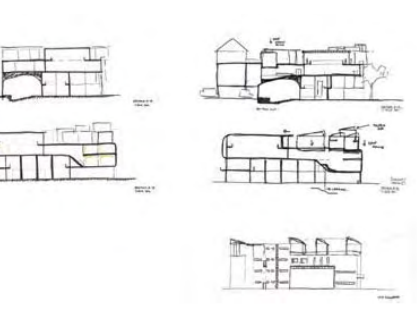
PROCESS 3



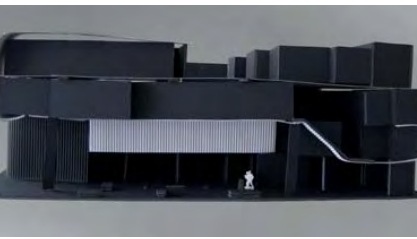
PROCESS 4



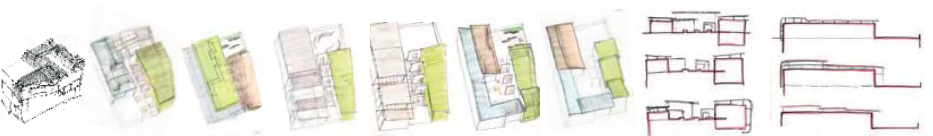
PROCESS 4



PROCESS 5

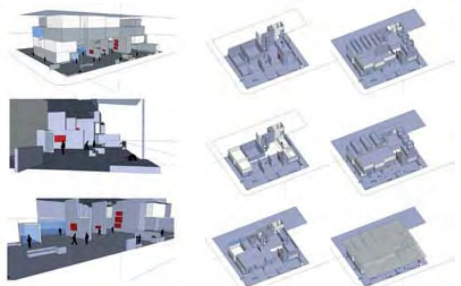


PROCESS 6



DESIGN DEVELOPMENT

PROCESS 3



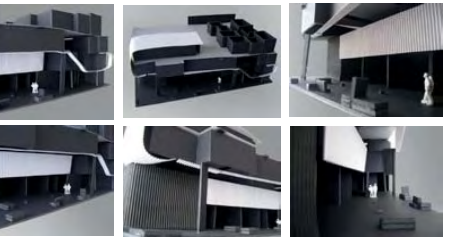
PROCESS 4



PROCESS 4



PROCESS 5



PROCESS 6

