

fig. 6.107 Early development sketch of section a-a; highlighting the need to create atrium spaces

fig. 6.108 Three dimensional development of fig. 6.107 indicating the level accommodation in terms of creating privacy through placement of functions

# DEVELOPMENT OF THE SECTIONS

## DEVELOPMENT OF SECTION A-A

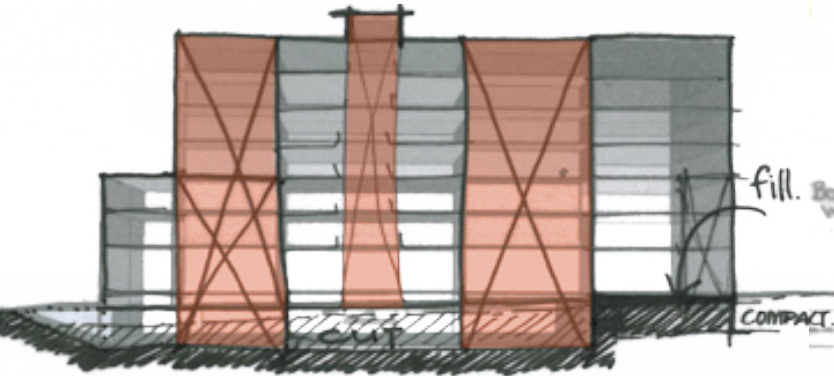


fig. 6.107

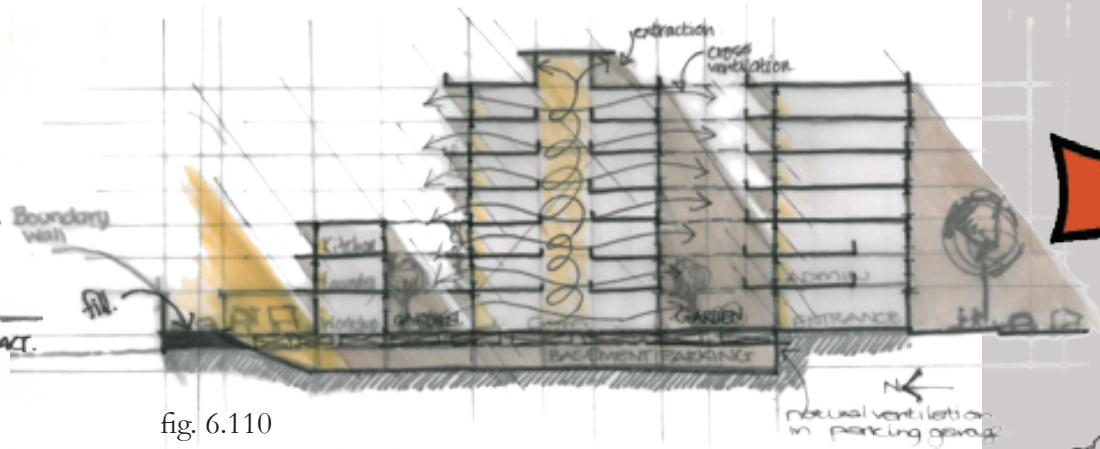


fig. 6.110

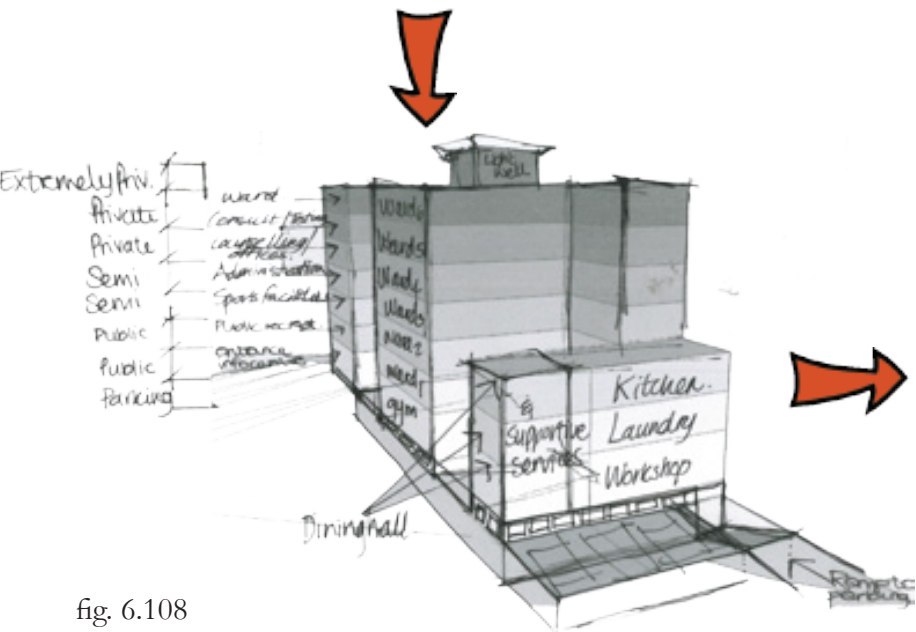


fig. 6.108

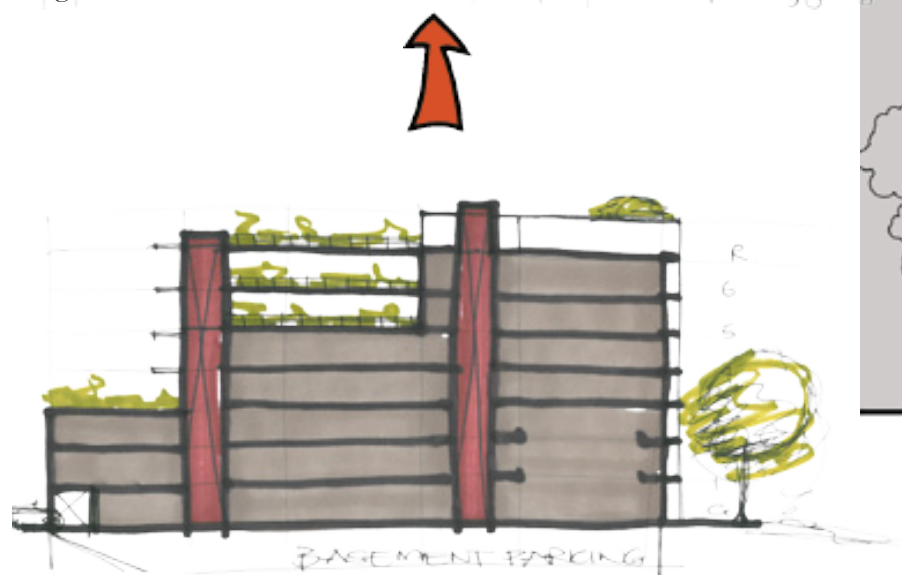


fig. 6.109



fig. 6.111

fig. 6.109 Concept sketch of section a-a; showing vertical circulation cores and stepping of the building down to the north

fig. 6.110 Concept sketch of section a-a showing various environmental factors taken into account

fig. 6.111 Developed section a-a (not to scale); notice the vertical circulation cores that lead off the main solid core, the 'floating' portions of the building that house the wards, the natural light that enters the facility, and the atrium spaces

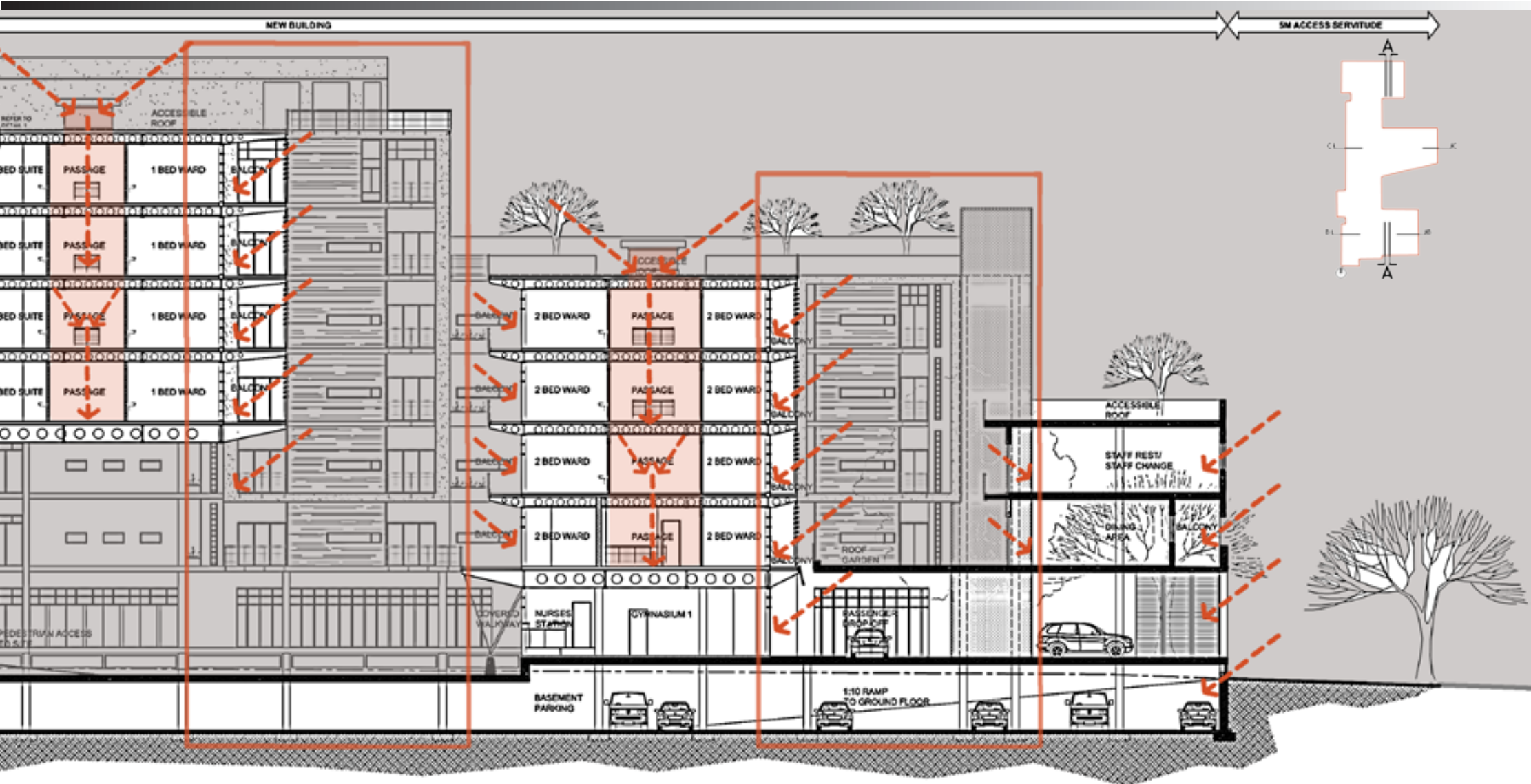


fig. 6.112 Concept sketch of a solid core that supports various parts of a building

fig. 6.115 Preliminary sketch of section b-b (2)

fig. 6.113 Concept sketch of a solid core that has activities radiating from it

fig. 6.114 Preliminary sketch of section b-b (1)

## DEVELOPMENT OF SECTION B-B

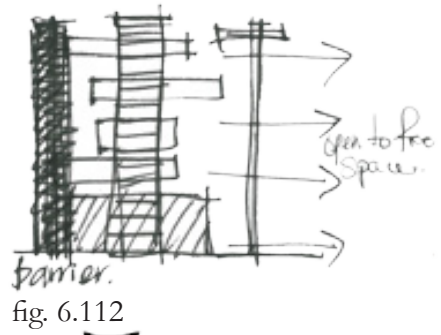


fig. 6.112

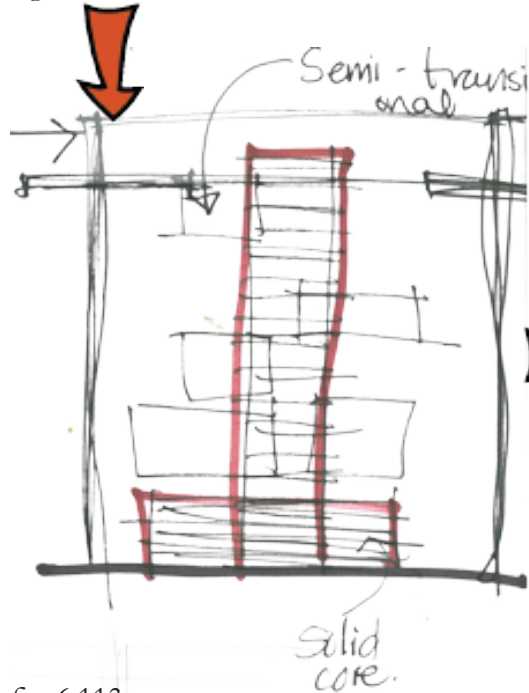


fig. 6.113

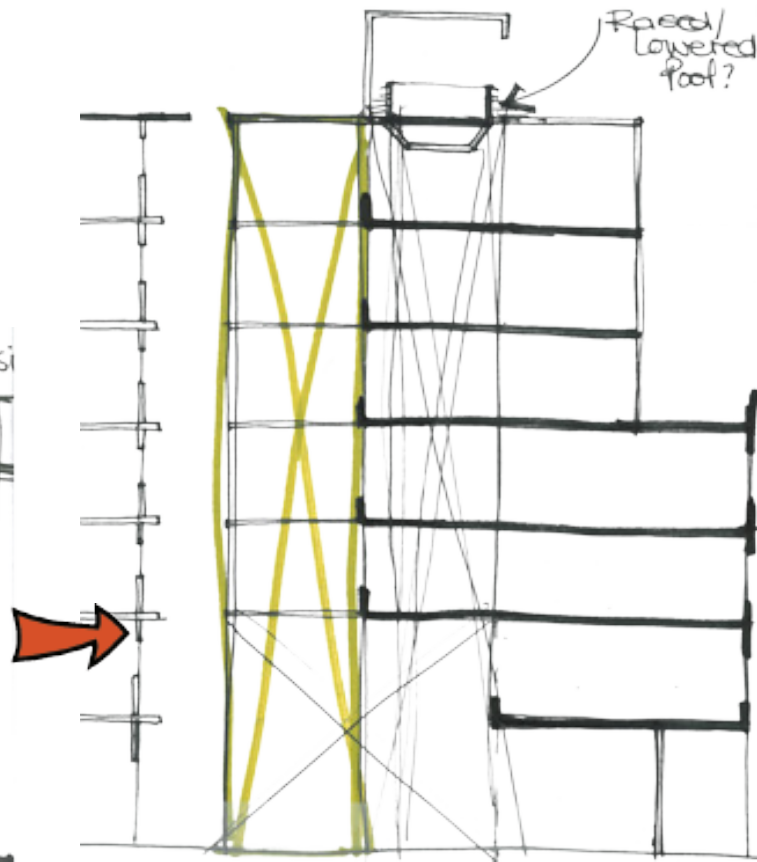


fig. 6.114

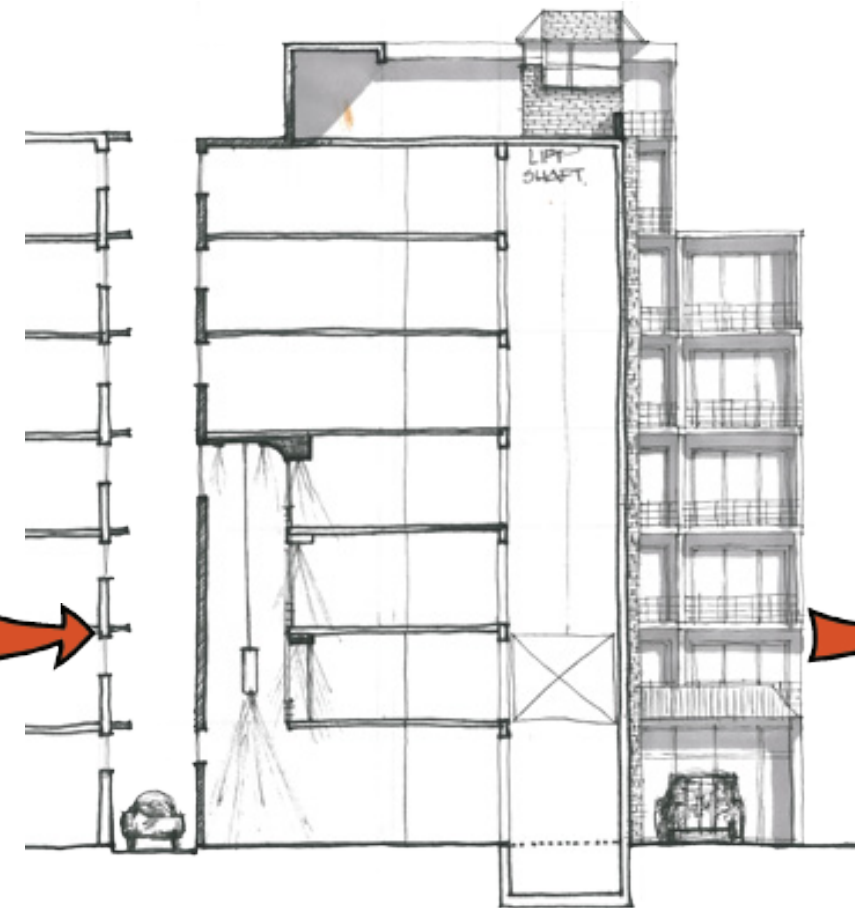


fig. 6.115

fig. 6.116 Preliminary sketch of section b-b (3)

fig. 6.117 Developed section b-b (not to scale); notice the main solid structural core, the 'floating' portion of the building that house the southern ward, the natural light that enters the facility and the balconies

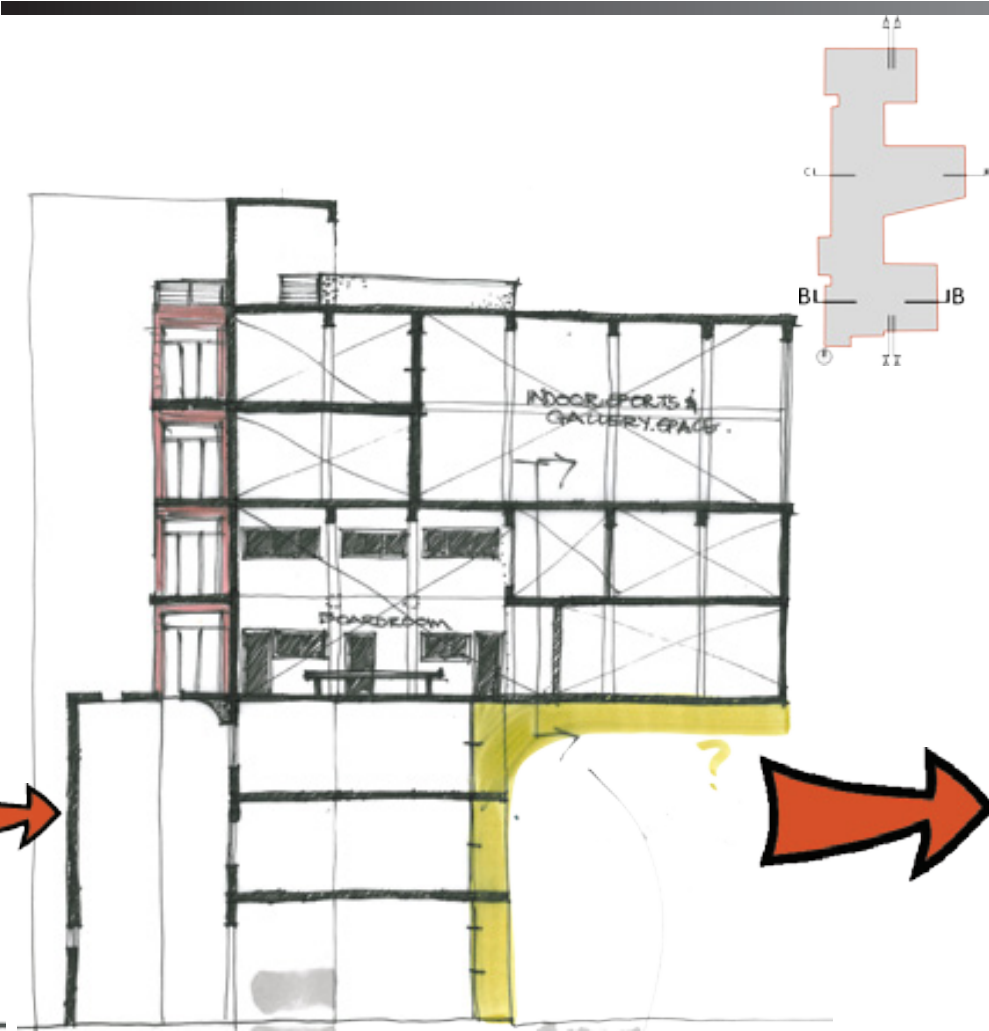


fig. 6.116

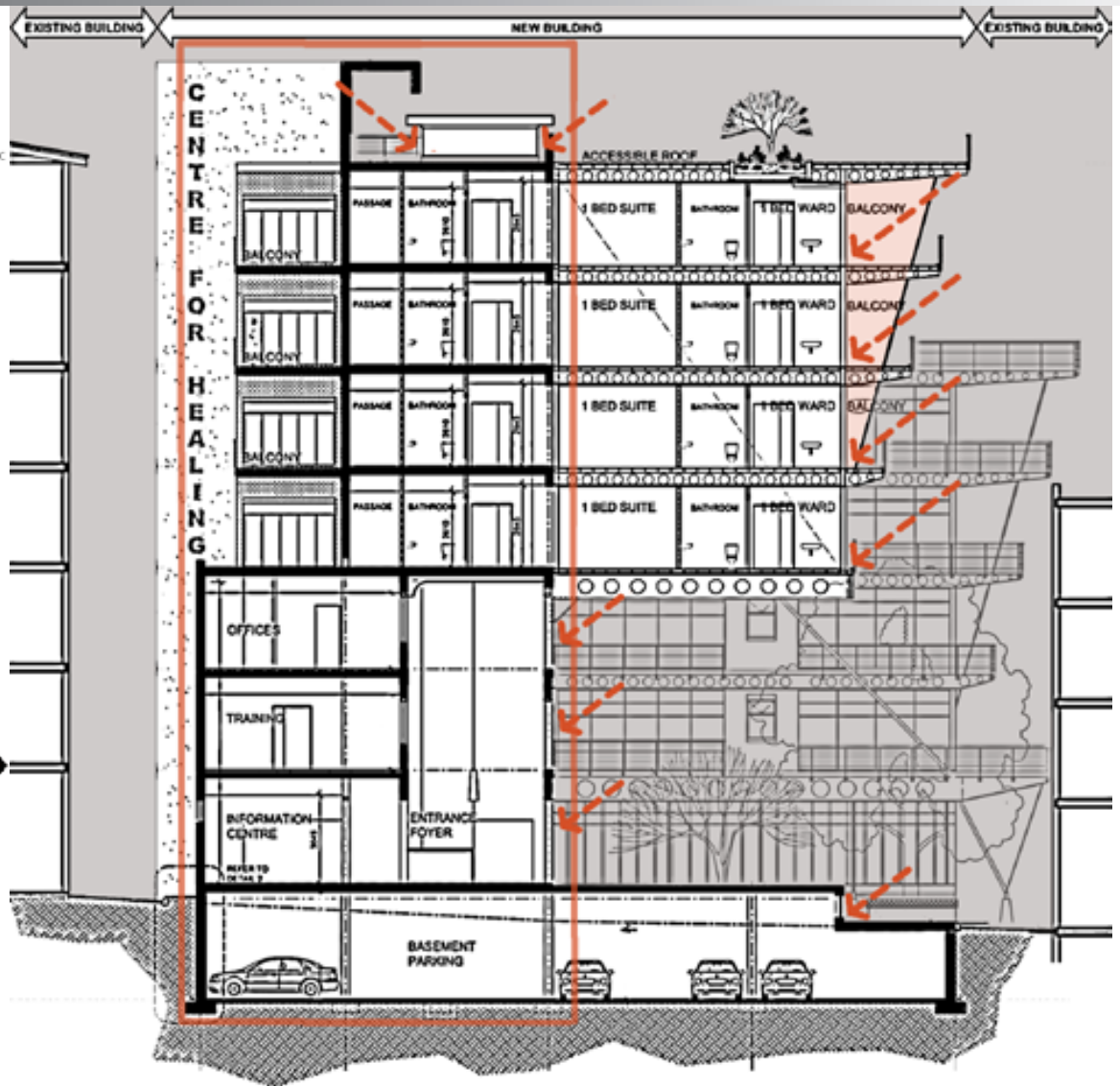


fig. 6.117

fig. 6.118 Concept sketch of having living green walls up the eastern side of the building in the form of accessible gardens  
 fig. 6.119 Concept sketch of creating varied platform spaces that lead off the main central core

DEVELOPMENT OF SECTION C-C

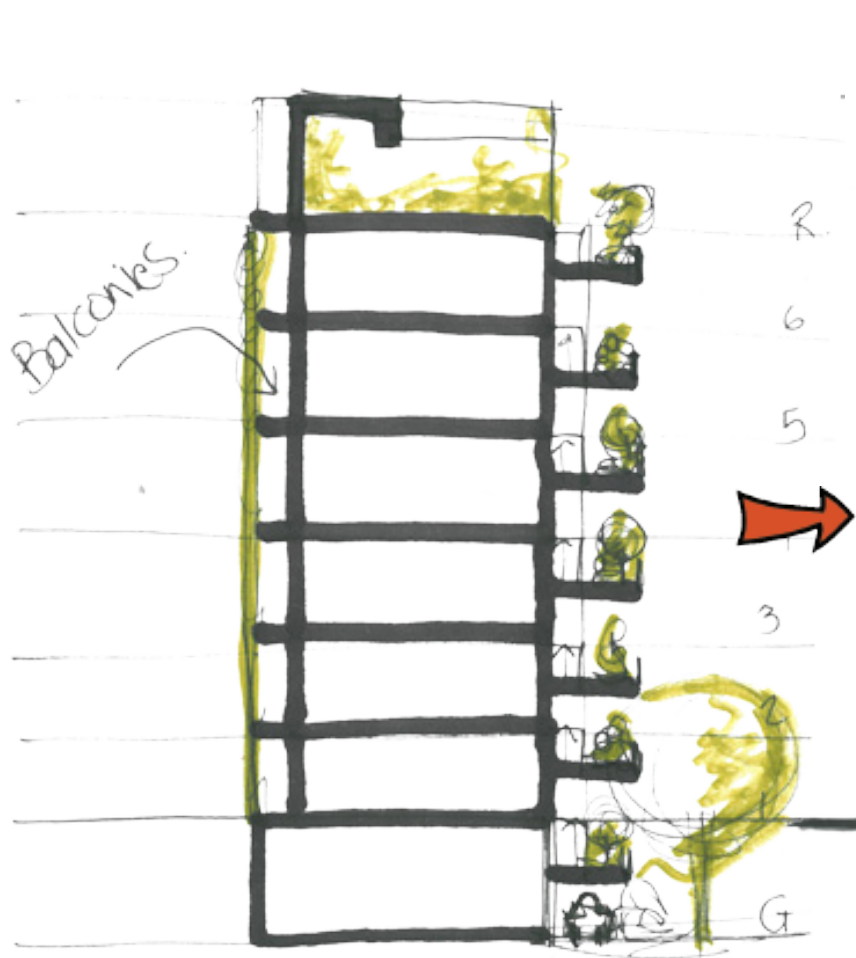


fig. 6.118

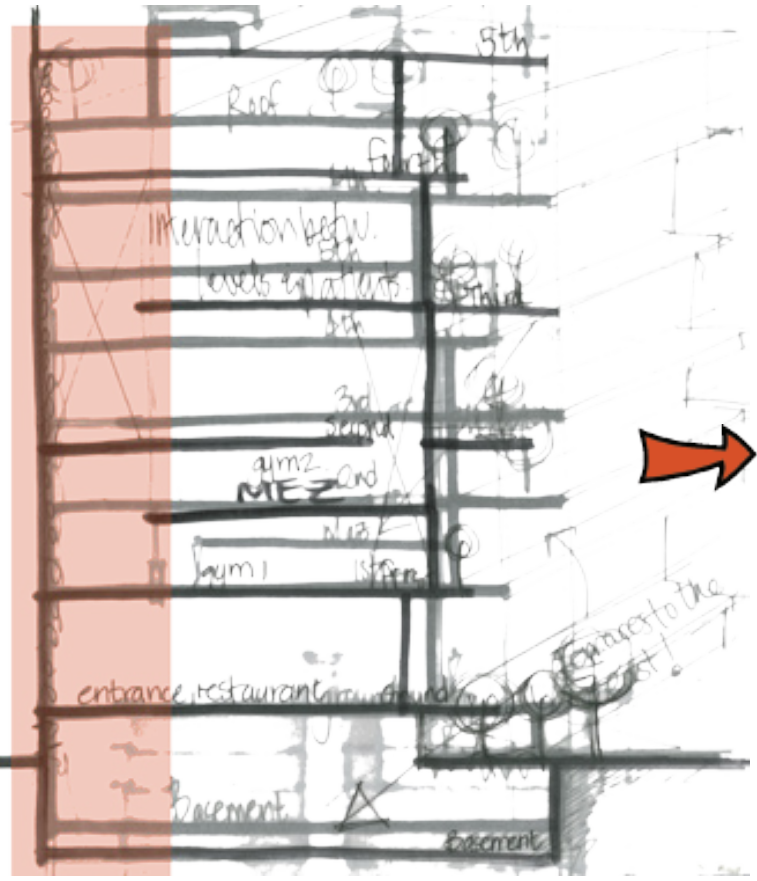


fig. 6.119



fig. 6.120

fig. 6.120 Preliminary sketch of section c-c

fig. 6.121 Developed section c-c (not to scale); notice the main solid core, the light weight central 'arm' of the building that houses wards, the natural light that enters the facility, and the balconies

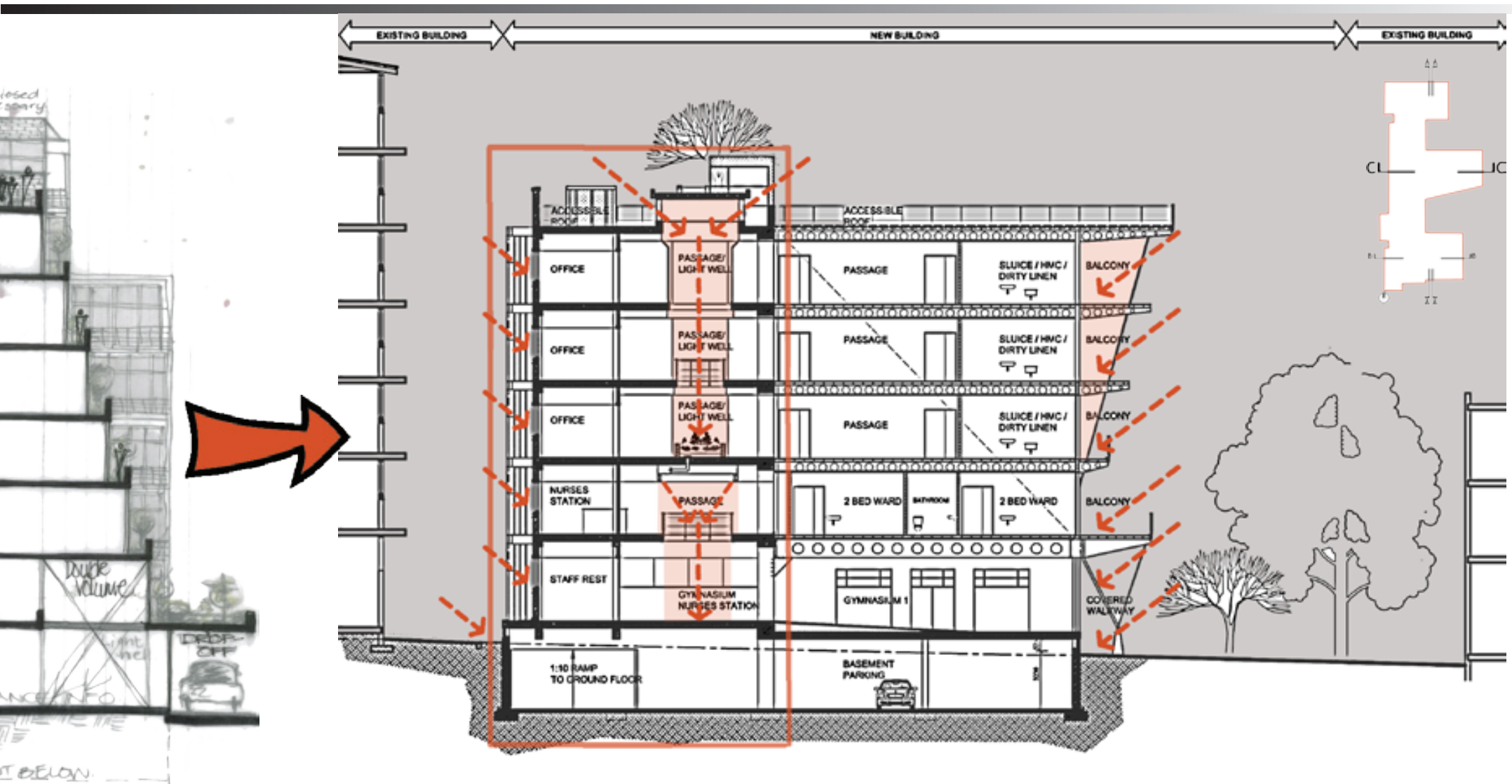


fig. 6.121

fig. 6.122 Spatial quality of light required in the gymnasium on the ground floor of the facility

fig. 6.123 Spatial quality of the volumes required in the entrance foyer of the facility

# DEVELOPMENT OF SPATIAL QUALITIES

## DEVELOPMENT OF SPACIAL QUALITIES

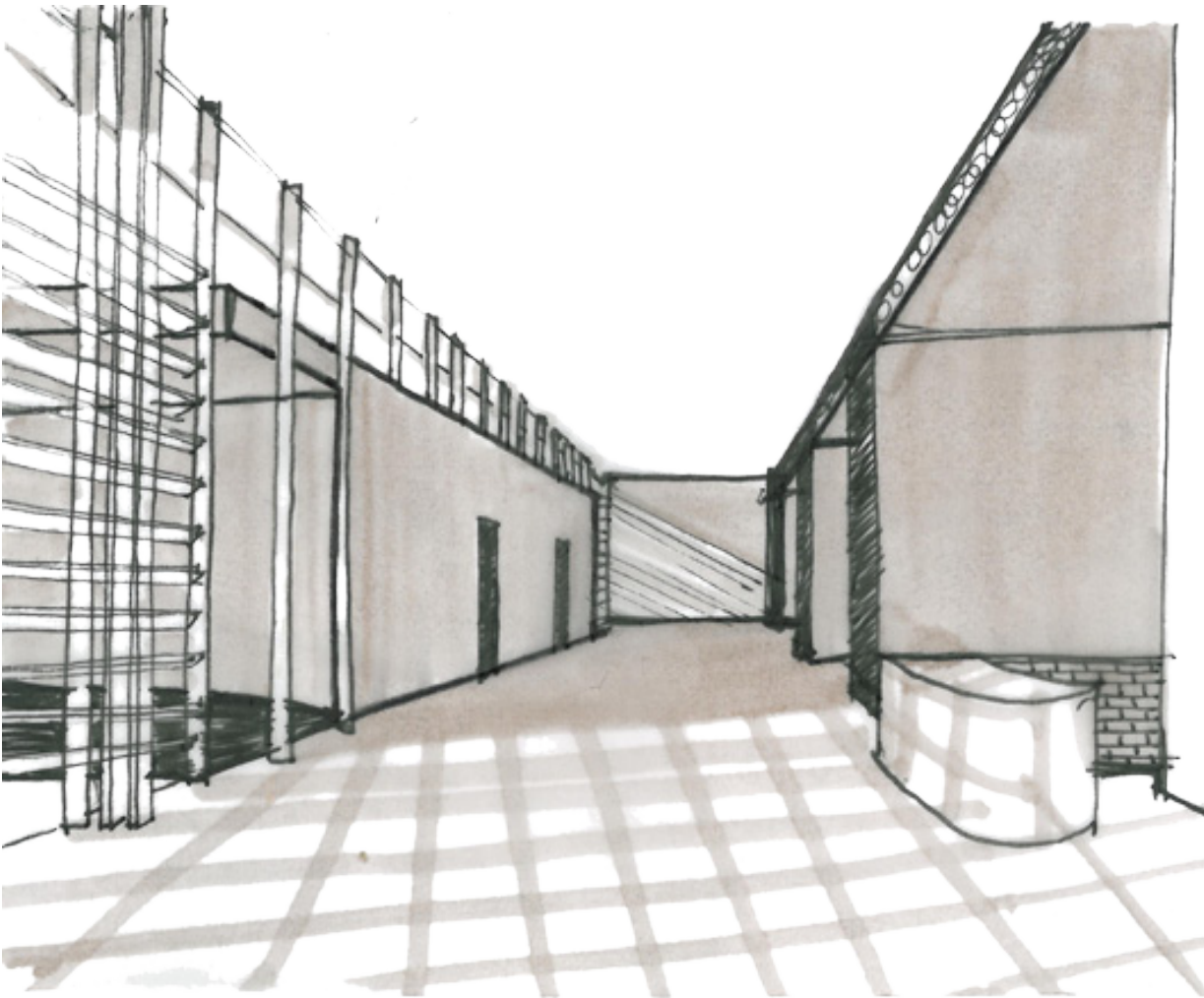


fig. 6.122

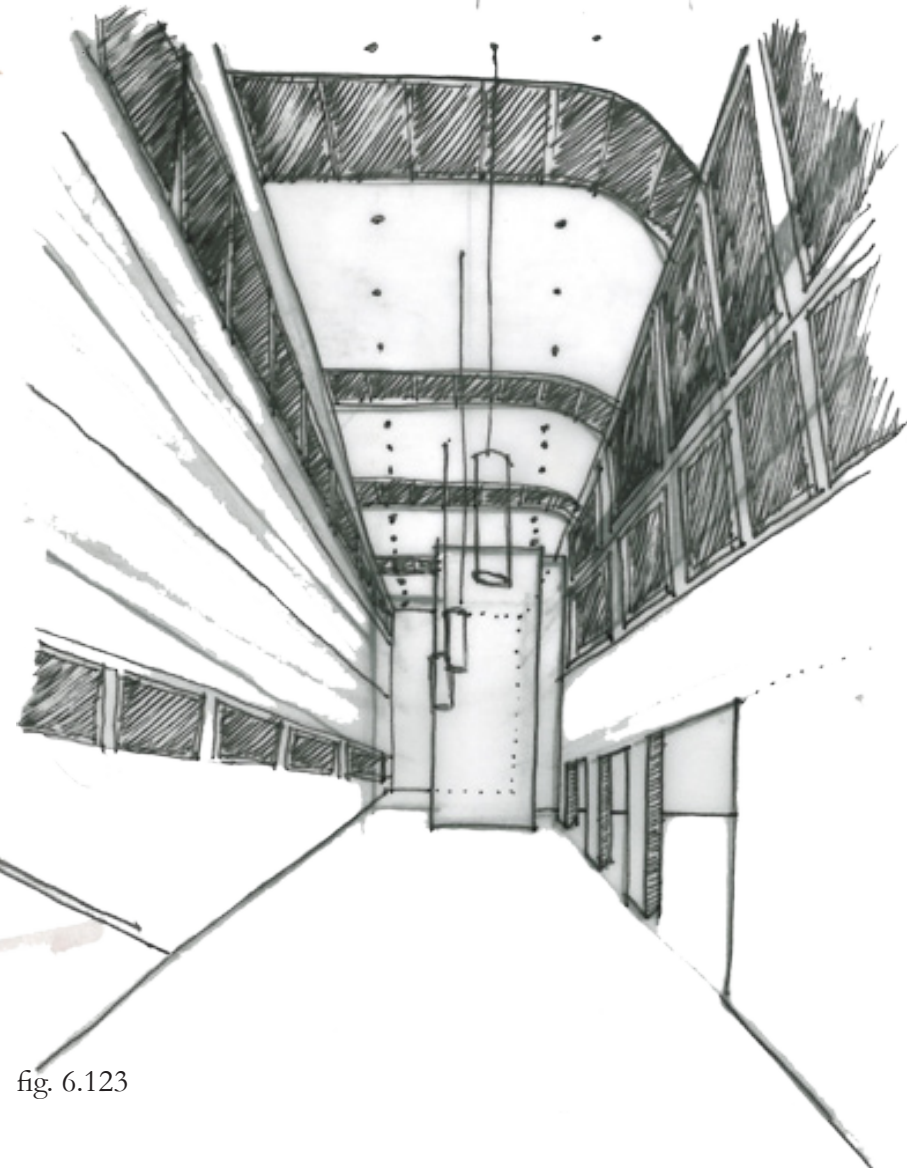


fig. 6.123

fig. 6.124 Spatial quality of atrium spaces between ward passages, bringing light and vegetation into the facility

fig. 6.125 Sketch plan illustrating the ideas illustrated in fig. 6.124

fig. 6.126 Spatial quality required at nurses stations within wards



fig. 6.124

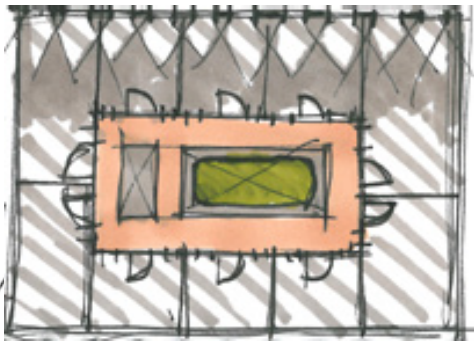


fig. 6.125



fig. 6.126



fig. 6.127 Spatial quality required in the boardroom/office spaces  
- double volume spaces

fig. 6.128 Sketch section showing the intentions of fig. 6.127  
where structure and infill both become visible parts of the architecture

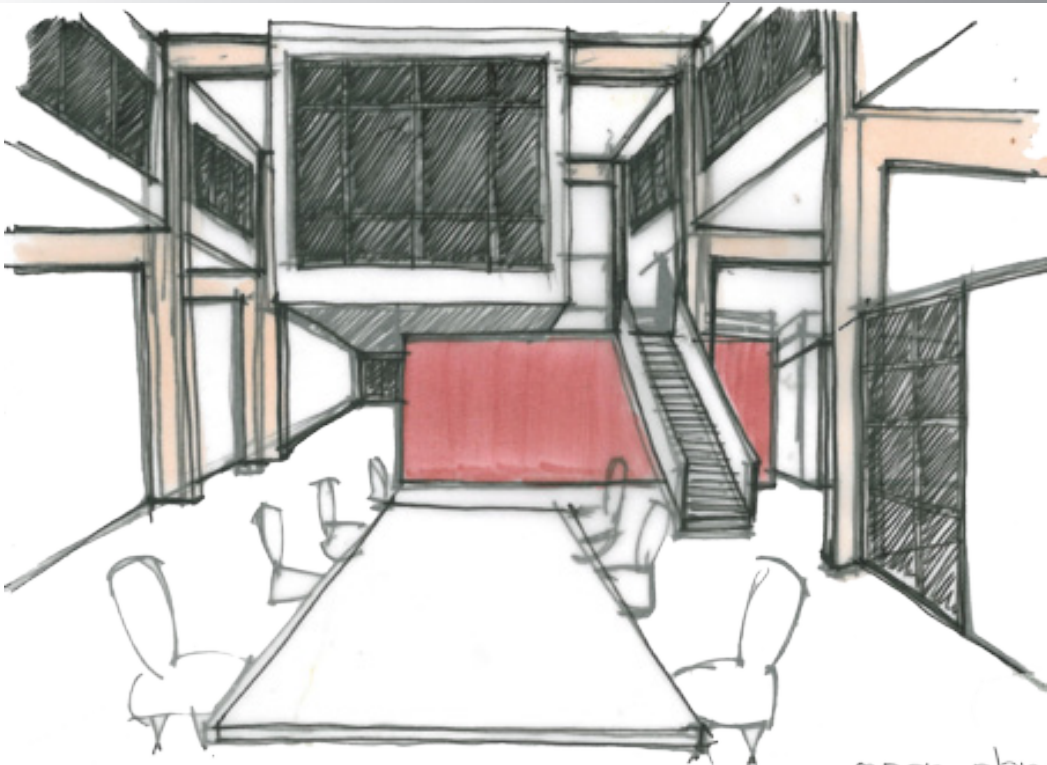


fig. 6.127

fig. 6.128

open plan  
office on  
side

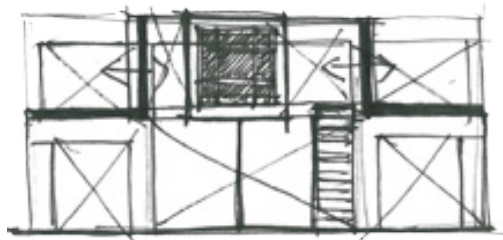


fig. 6.129

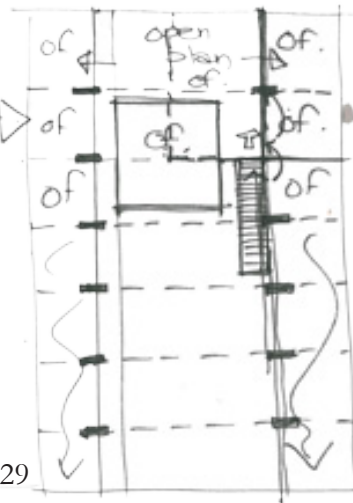


fig. 6.129 Sketch plan showing the structural need to achieve the intentions set out in fig. 6.127-6.128

fig. 6.130-6.133 Diagrammatic sections of possible spatial and lighting qualities for the gymnasium

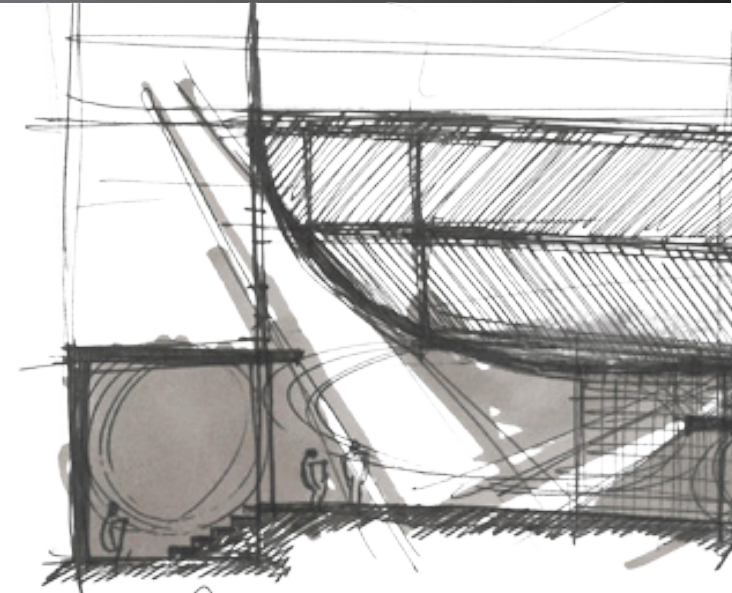


fig. 6.131

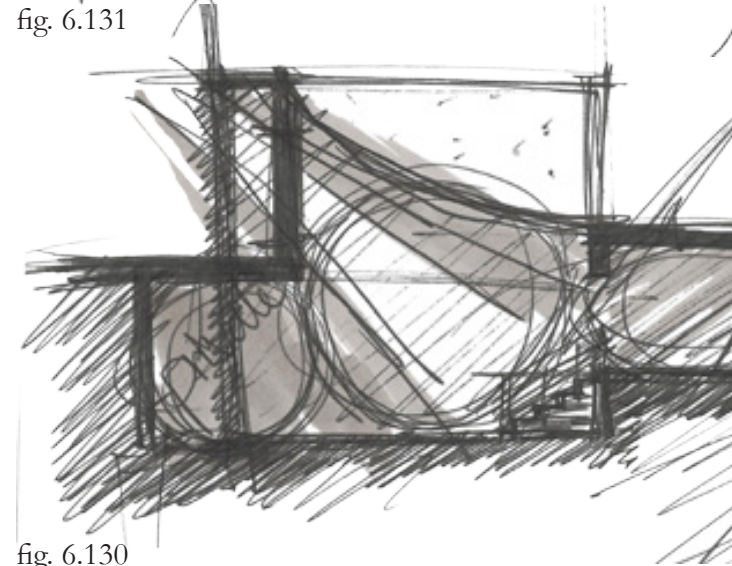


fig. 6.130

fig. 6.134 Sketches showing the possibilities of bringing more vegetation into the design of spaces where limited views are allowed (western side) and creating these as the more public/circulation portions of the building

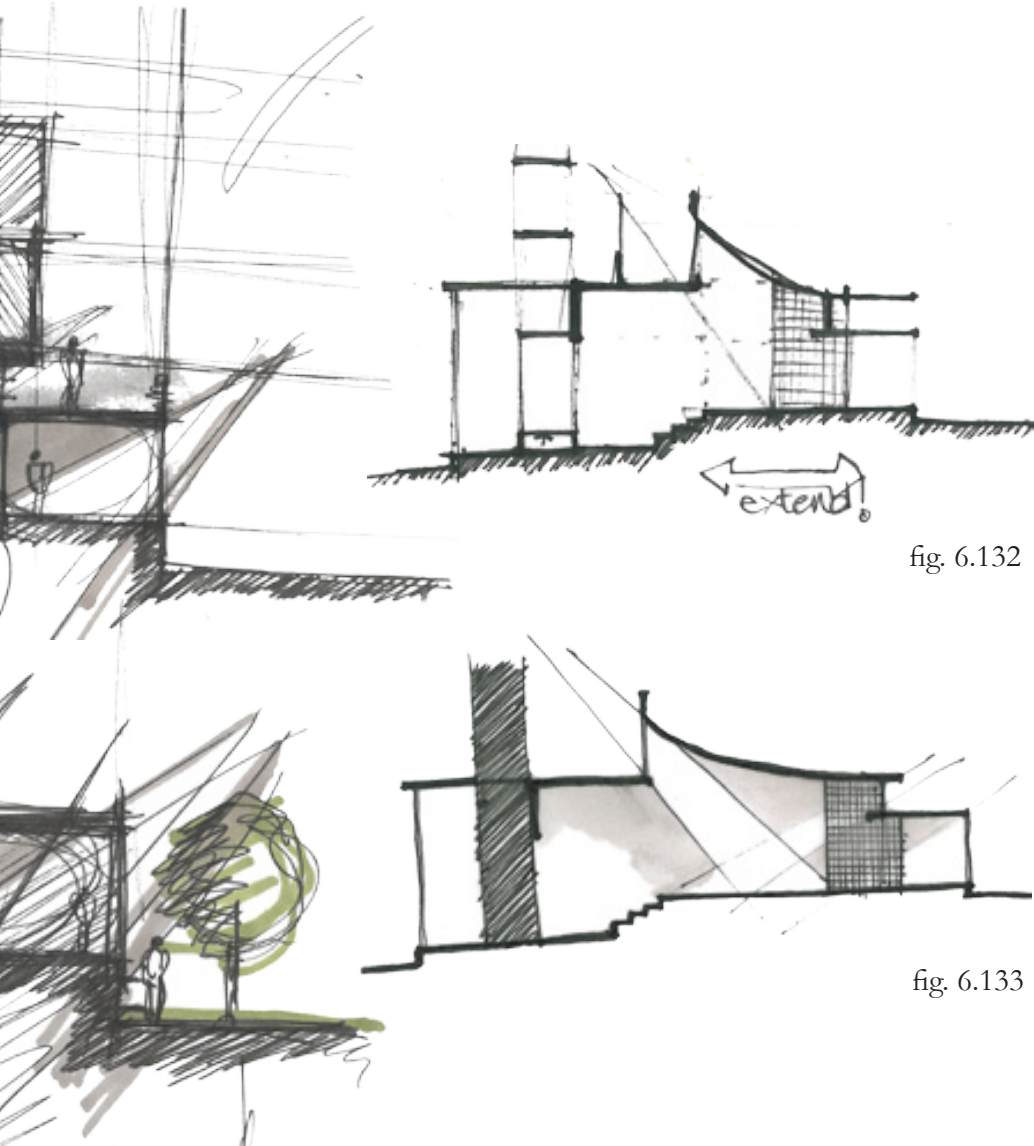


fig. 6.132

fig. 6.133

fig. 6.135 Sketch illustrating the possibility of using varied layers attached to the building for environmental purposes but also to achieve the desired interior lighting condition

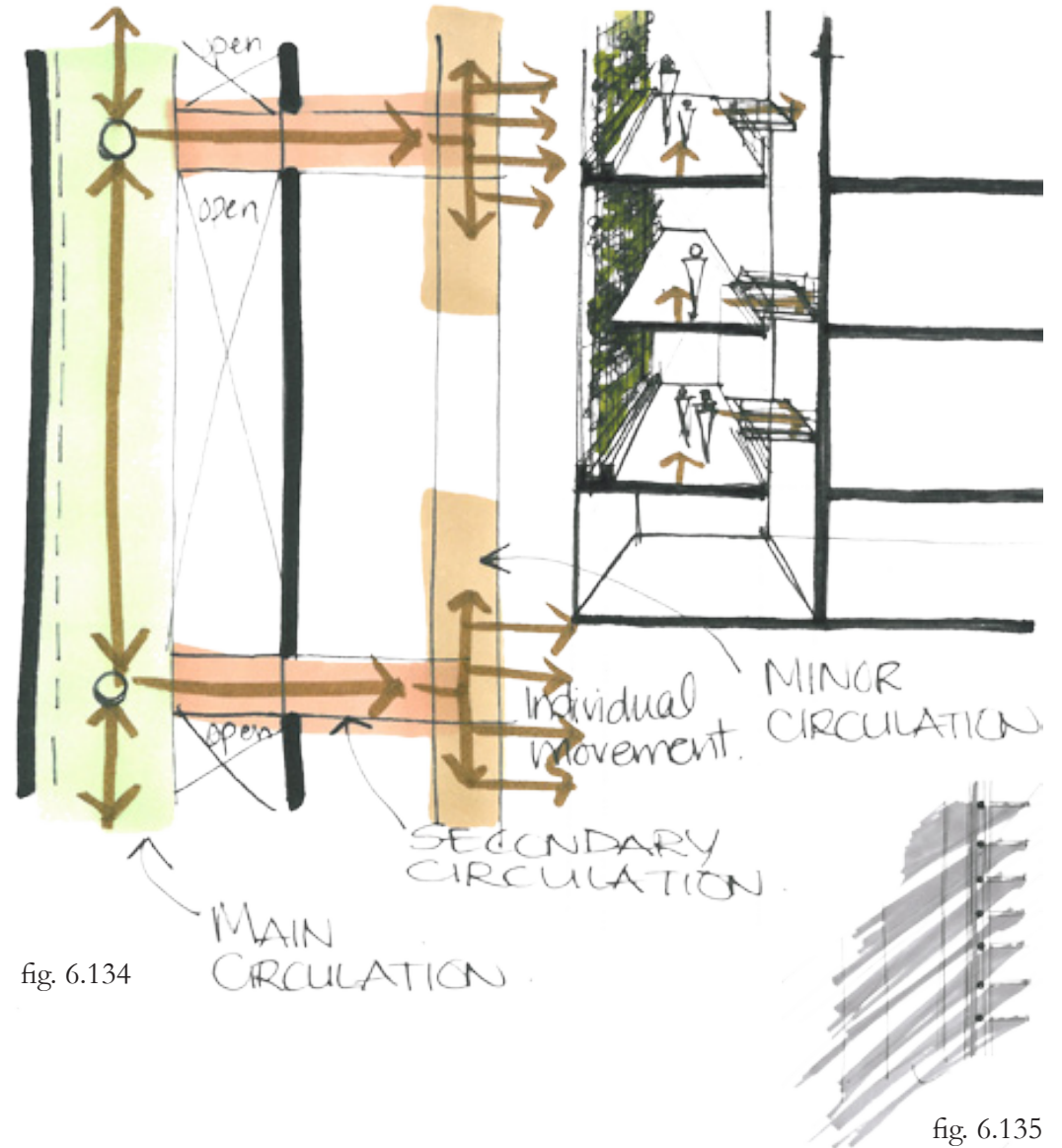


fig. 6.134

fig. 6.135

fig. 6.136 Preliminary southern elevation  
fig 6.137 Three dimensional developed south eastern elevation

fig. 6.138 Conceptual massing sketch of the south eastern elevation

# DEVELOPMENT OF THE ELEVATIONS

## DEVELOPMENT OF THE SOUTHERN ELEVATION

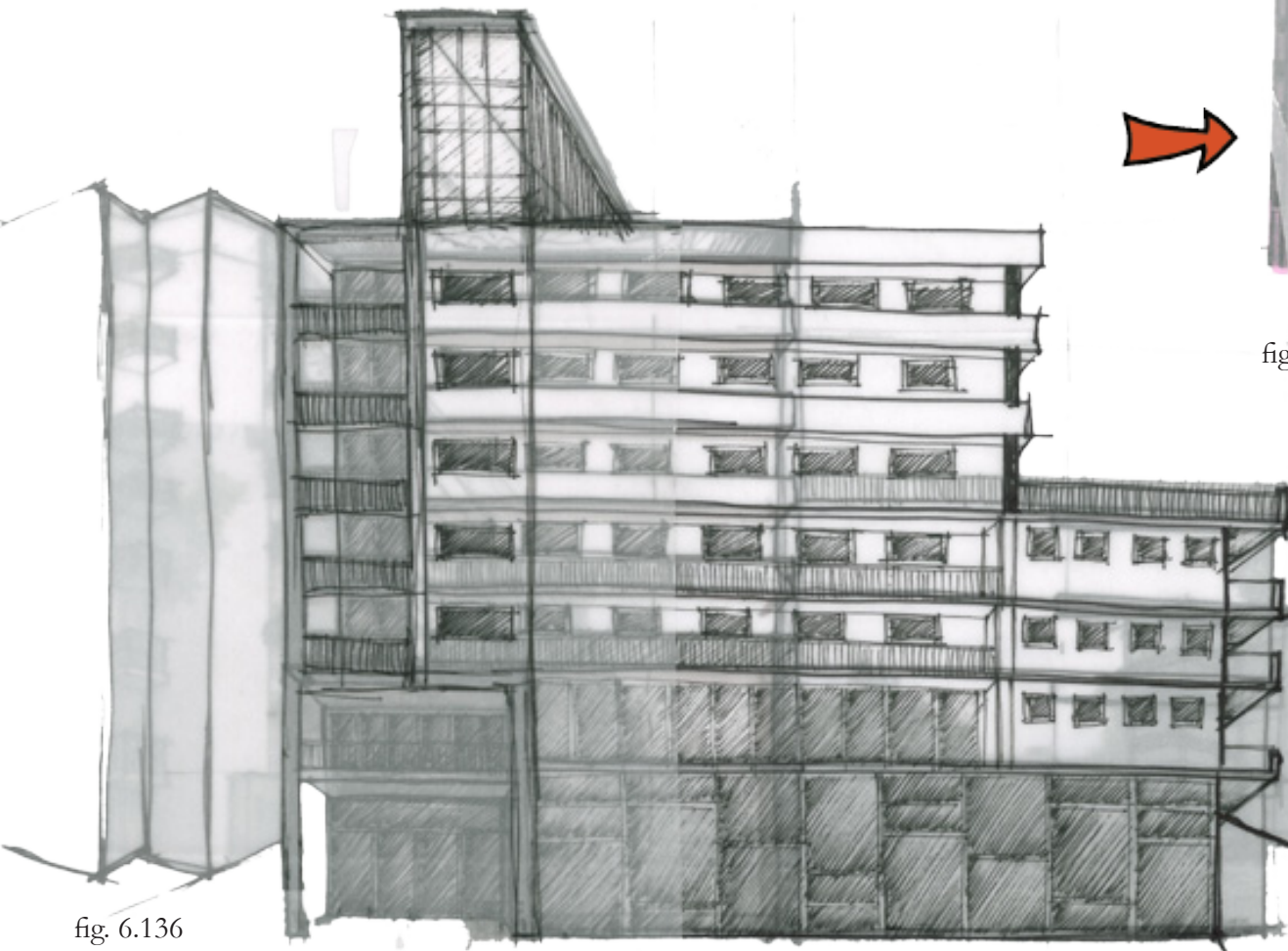


fig. 6.136

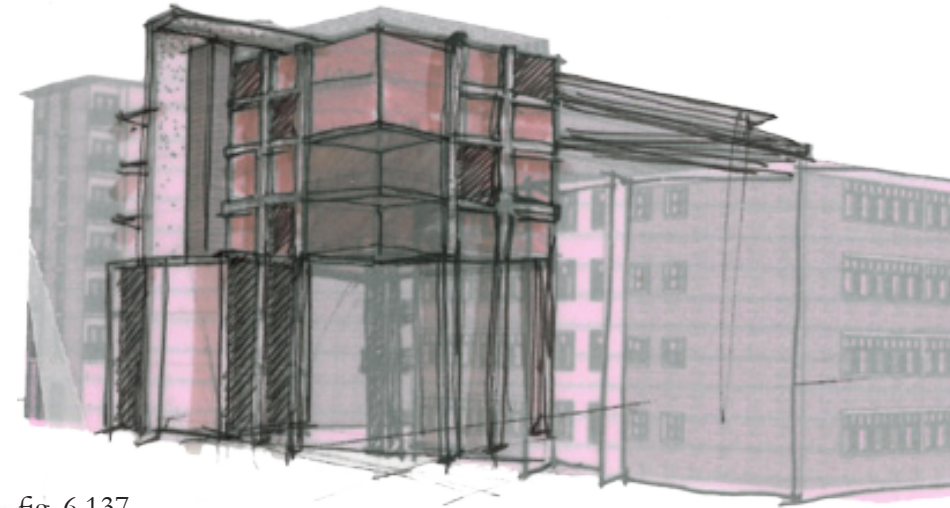


fig. 6.137

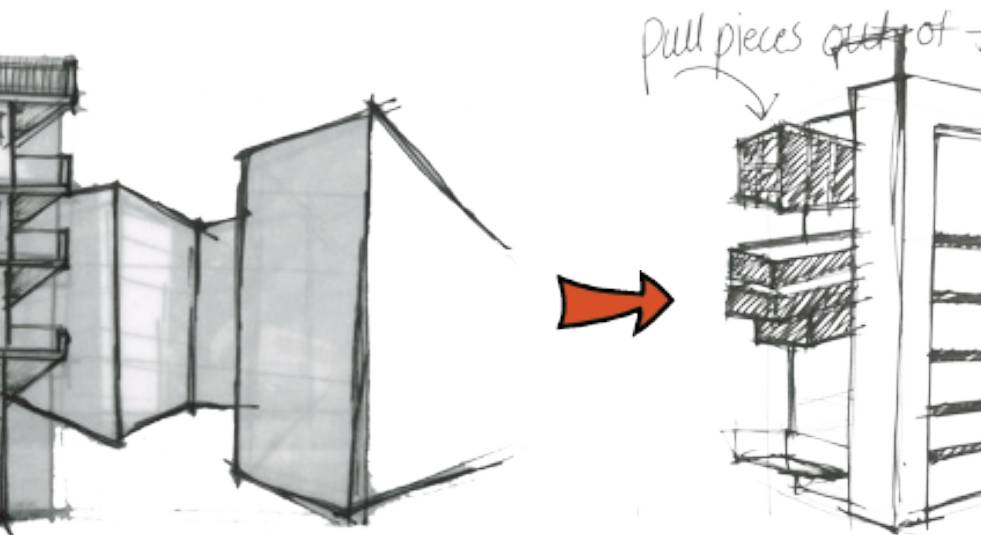


fig. 6.139 Developed southern elevation (not to scale); notice the main solid core, the 'floating arm' of the building, the distinct entrance to the facility, the variation in construction materials, and the activity spaces on ground floor level



fig. 6.138

fig. 6.139

- fig. 6.140 Preliminary western elevation
- fig. 6.141 Three dimensional preliminary south western elevation (1)
- fig. 6.142 Three dimensional preliminary south western elevation (2)

DEVELOPMENT OF THE WESTERN ELEVATION

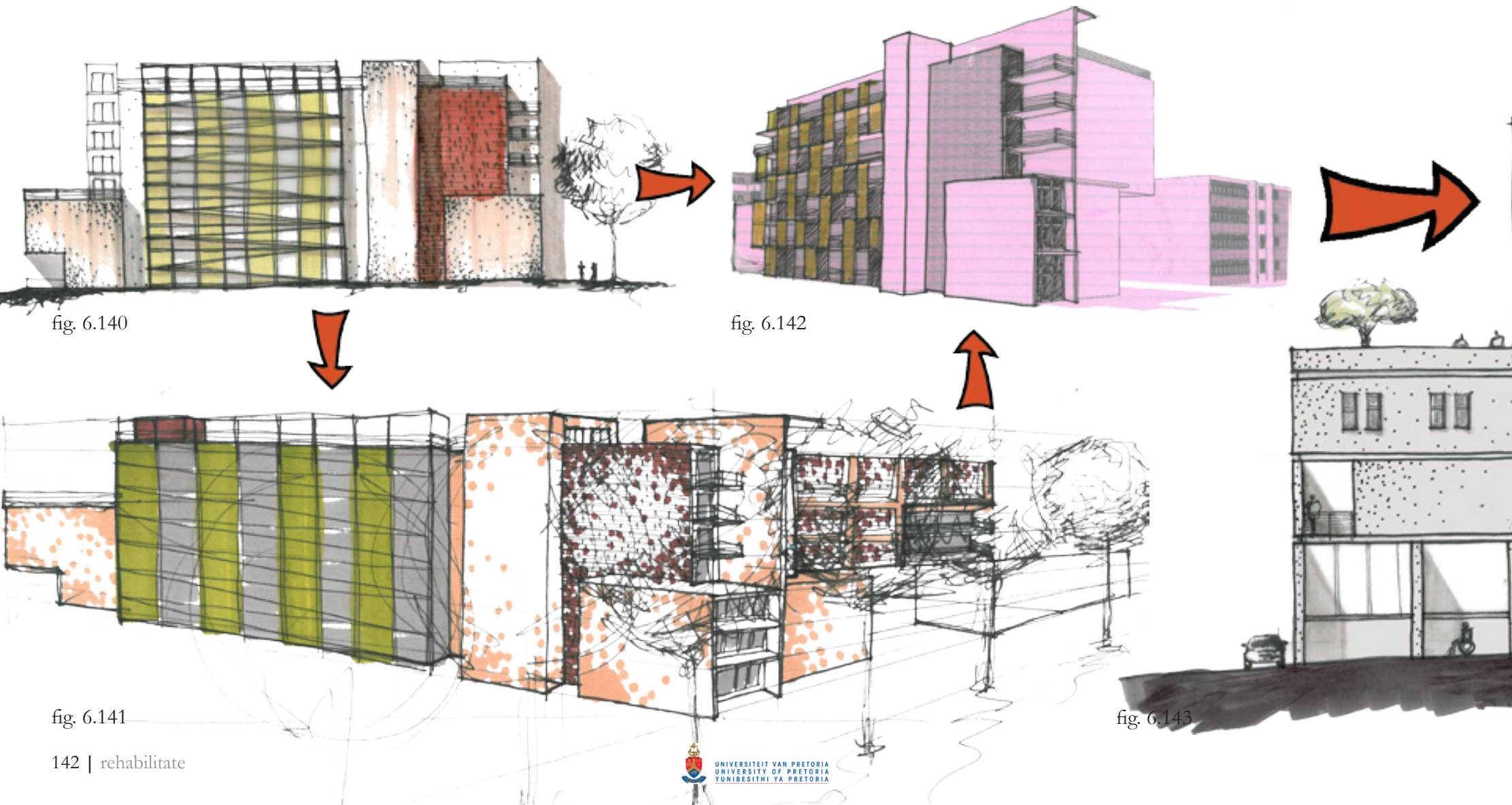
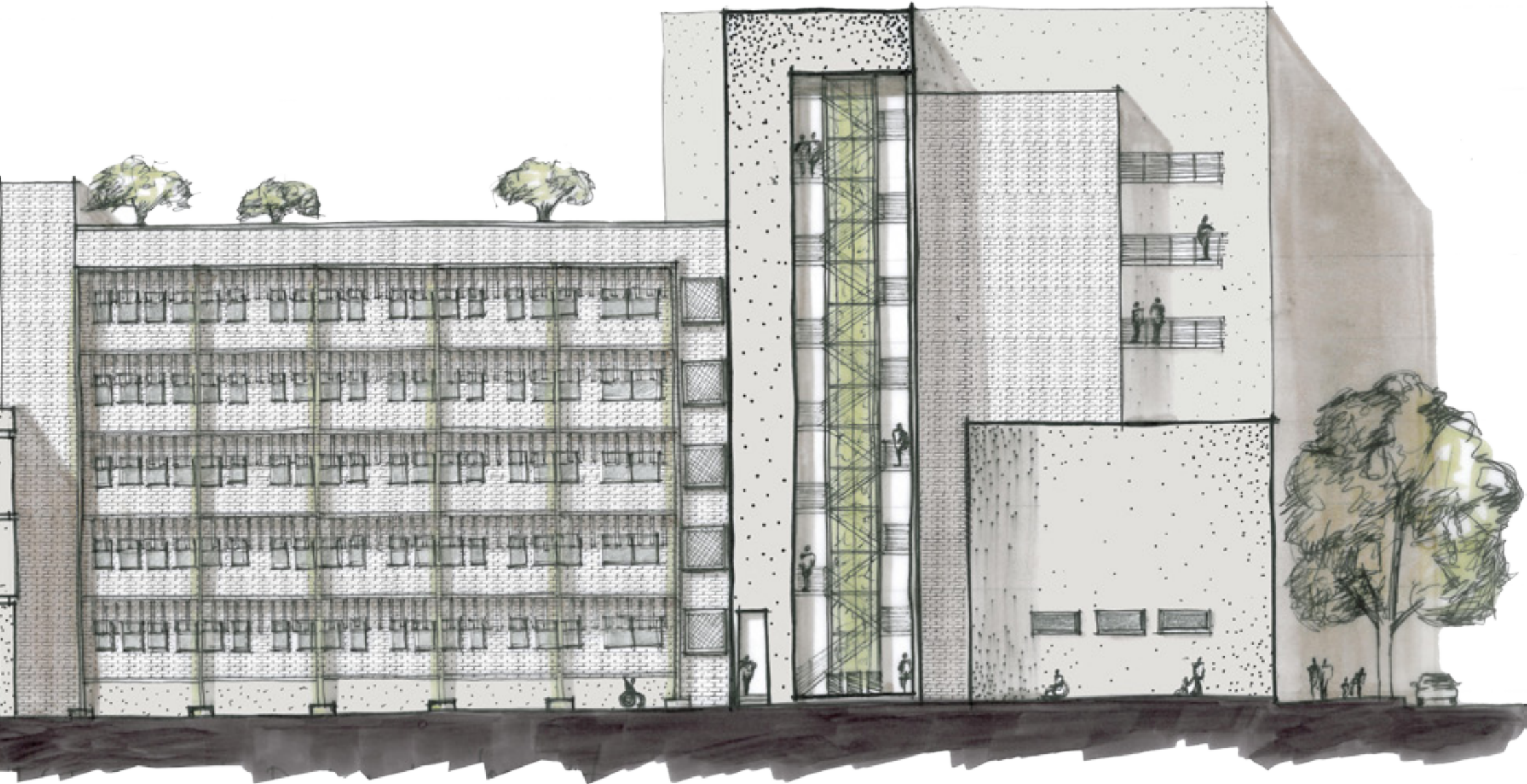


fig. 6.143 Developed western elevation (not to scale); notice the stepping of the building to the north, the material response to the environment, the planted screens and sun louvres, and the open air fire escape stairs with planted screens



DEVELOPMENT OF THE NORTHERN ELEVATION



fig. 6.144



fig. 6.145

fig. 6.146 Developed northern elevation (not to scale); notice the stepping of the building up to the south, the main solid core, the ward 'arms' of the building, the variation in construction materials, and the open air fire escape stairs with planted screens

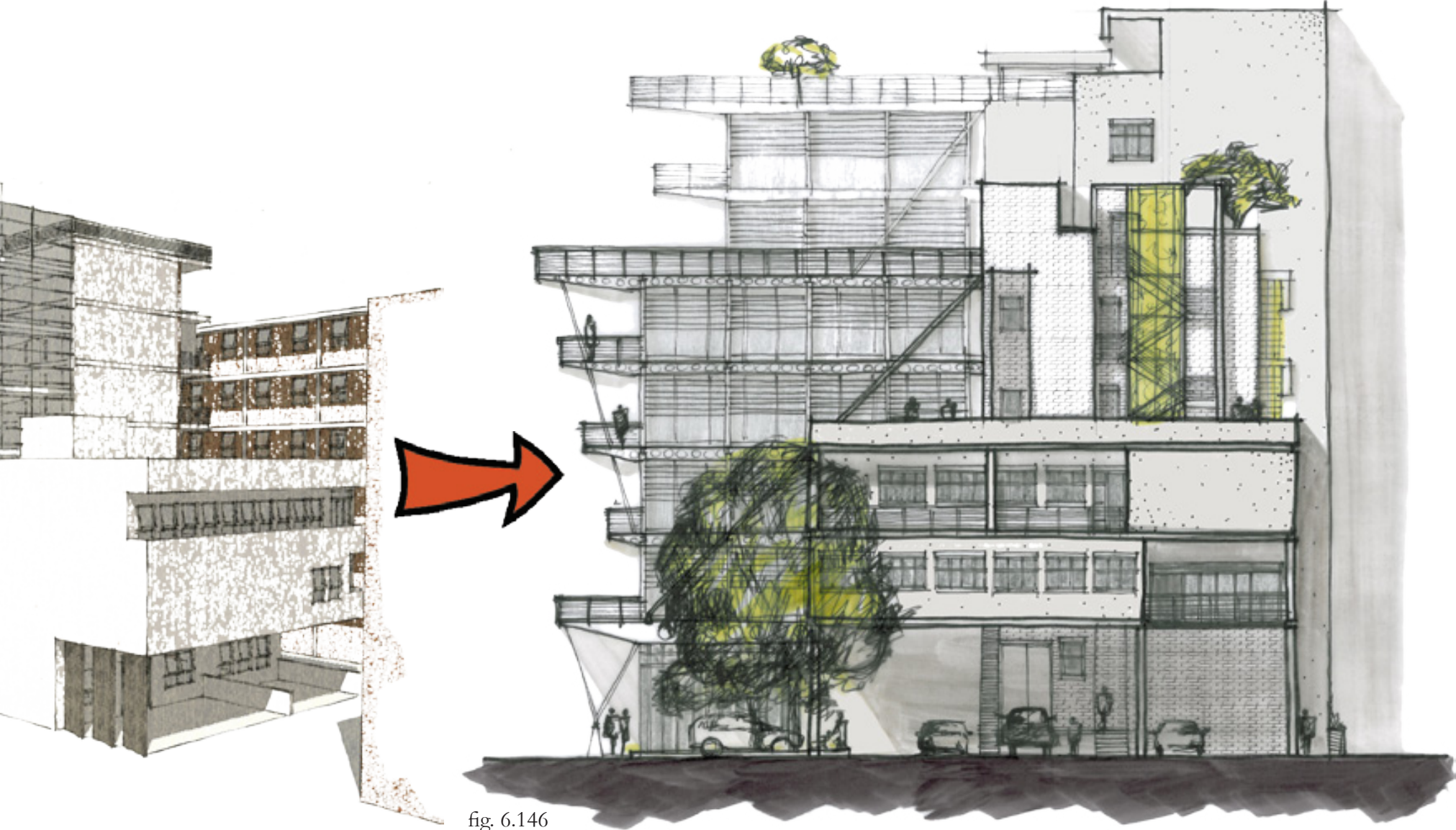


fig. 6.146



fig. 6.147 Three dimensional preliminary south eastern elevation (1)  
 fig. 6.148 Three dimensional south eastern elevation (2)  
 fig. 6.149 Three dimensional preliminary south eastern elevation (3)

fig. 6.150 Concept sketch of ideas related to the eastern elevation

DEVELOPMENT OF THE EASTERN ELEVATION

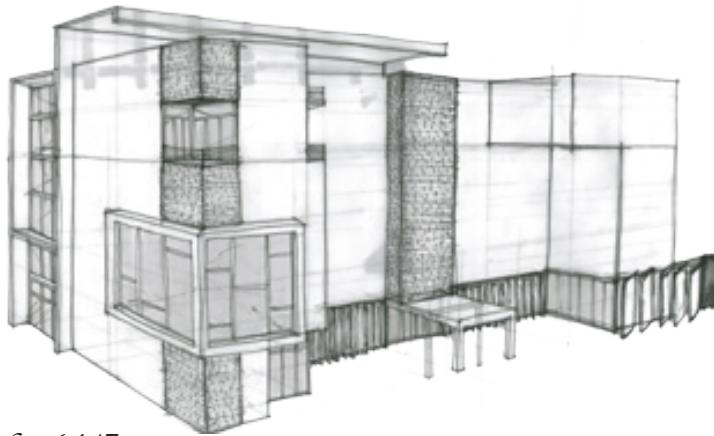


fig. 6.147

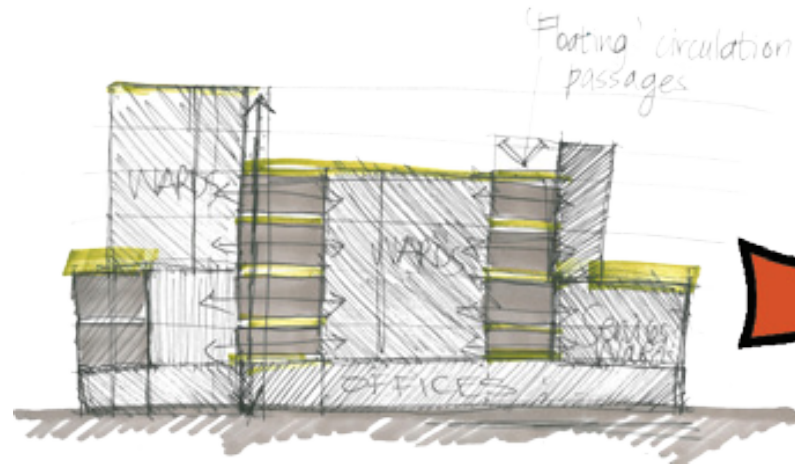


fig. 6.150

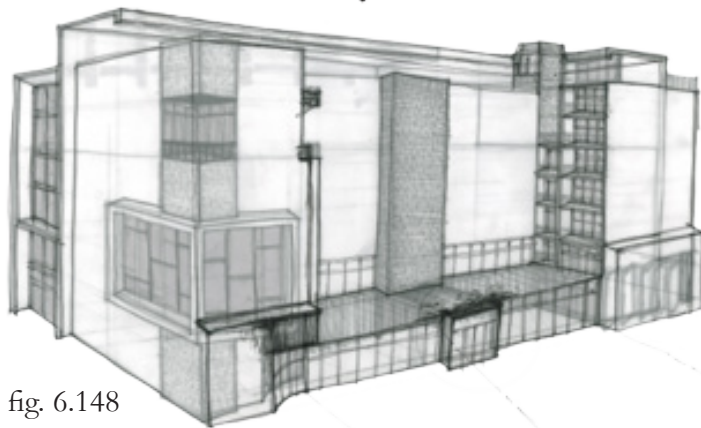


fig. 6.148

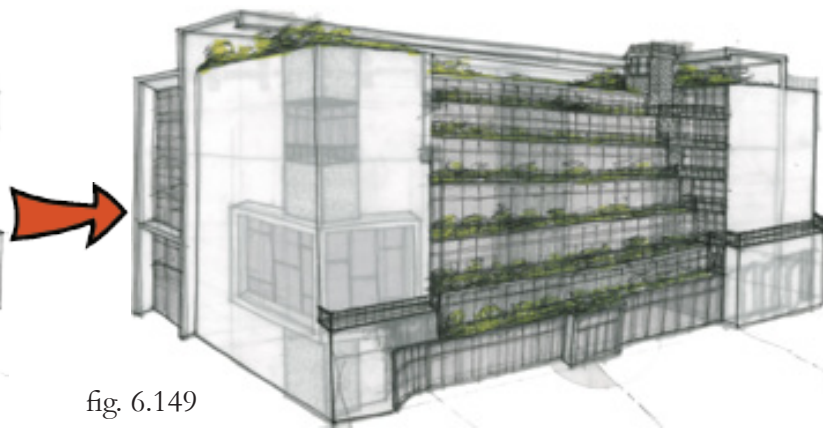
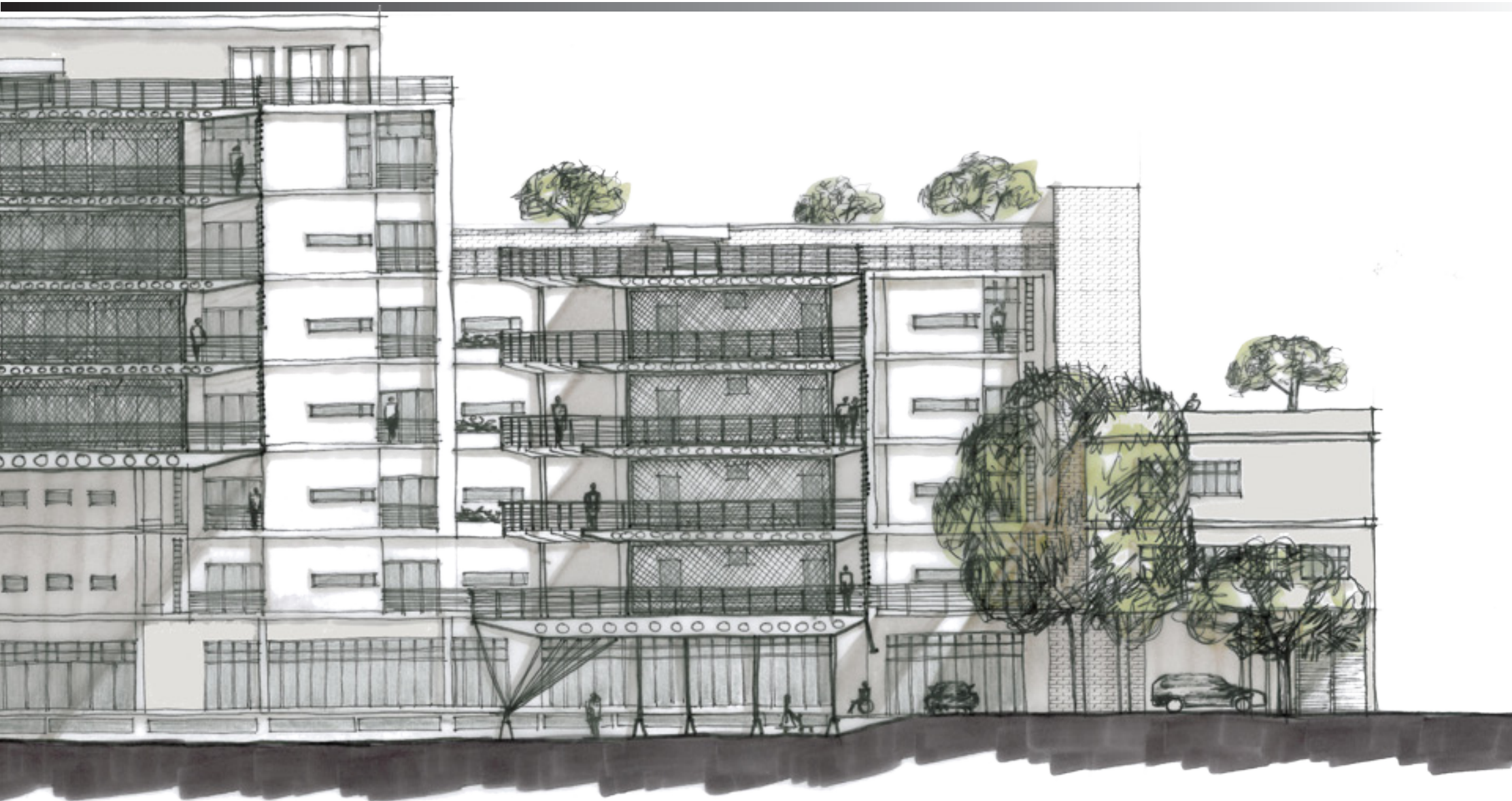


fig. 6.149



fig. 6.151

fig. 6.151 Developed eastern elevation (not to scale); notice the stepping of the building up to the south, the main solid core at the back, the ward 'arms' of the building reaching into the eastern courtyard space, and the variation in construction materials



# DIAGRAMMATIC ANALYSIS

fig. 6.152 Parti diagram for the project  
fig. 6.153 The geometry of the building's plan  
fig. 6.154 The hierarchy of form evident in the plan  
fig. 6.155 The hierarchy of function evident in the plan

PARTI

GEOMETRY

HIERARCHY OF FORM

HIERARCHY OF FUNCTION

MASSING

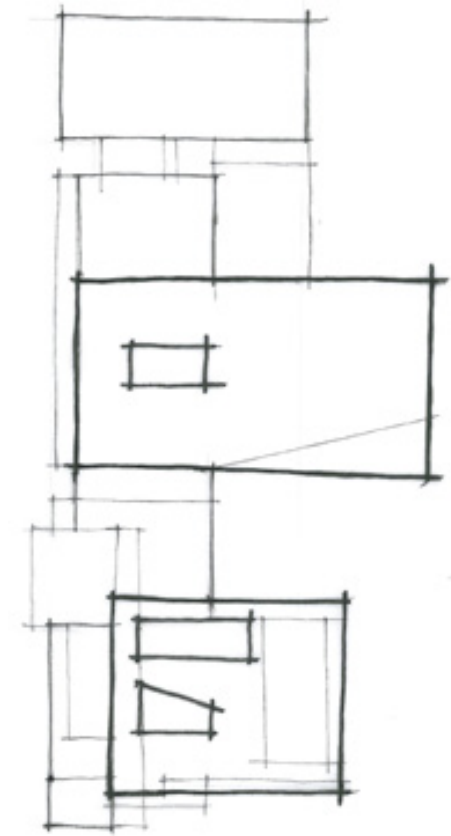
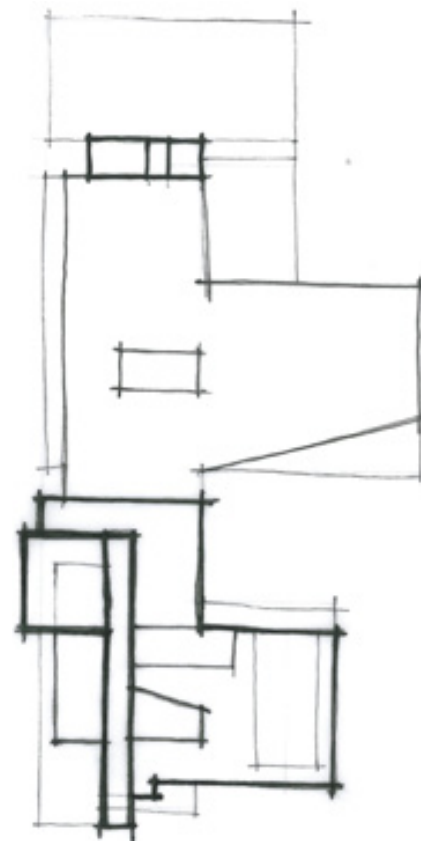
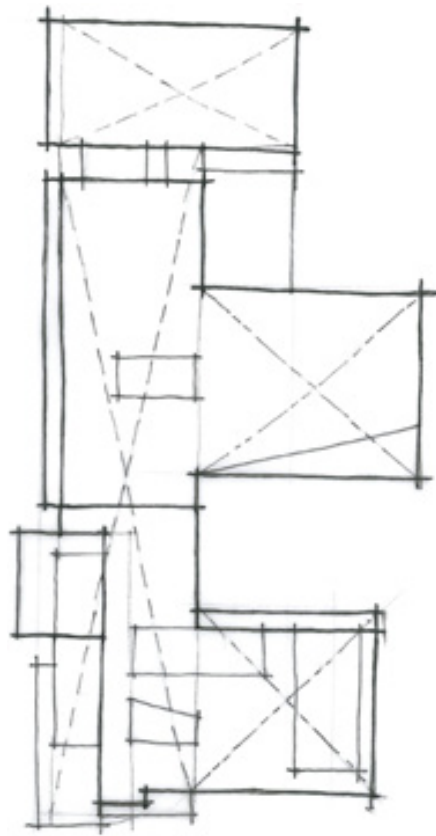
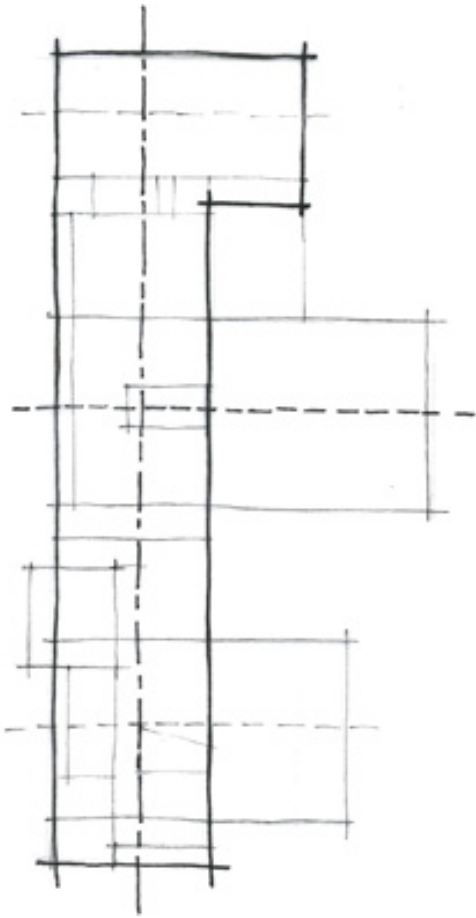


fig. 6.152

fig. 6.153

fig. 6.154

fig. 6.155

fig. 6.1

STRUC

fig. 6.1

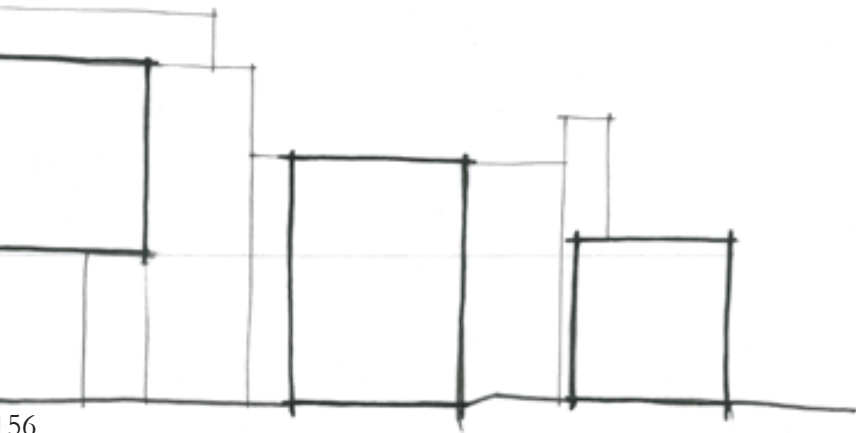
fig. 6.156 The massing of the building in elevation

fig. 6.157 The structural system of the building in plan

fig. 6.158 Plan and elevation showing the use of symmetry and balance in the design solution

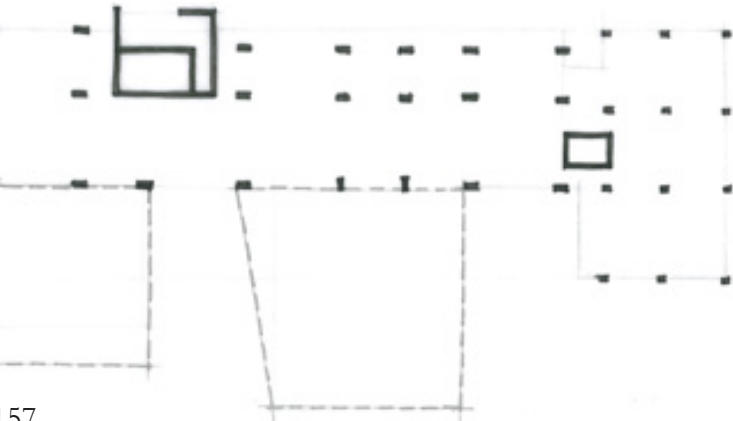
NG

## SYMMETRY & BALANCE



56

TURE



57

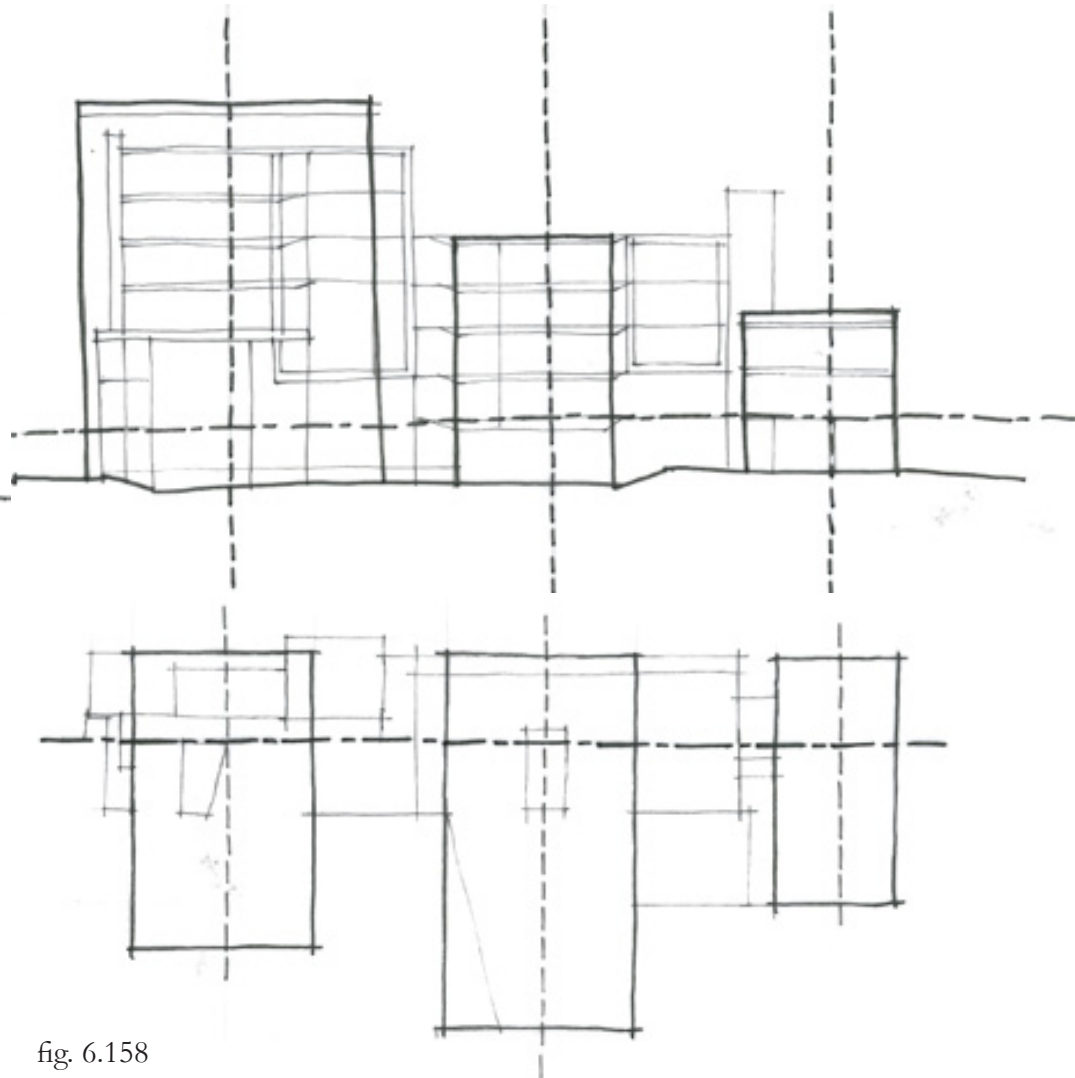


fig. 6.158

fig. 6.159 Plan and section illustrating the reticulation of vertical and horizontal circulation

fig. 6.160 The use of solids and voids on various levels; illustrated on the plan

fig. 6.161 Section showing the access to natural light within the building

fig. 6.162 Section showing the use of natural cross ventilation through the 'arms' of the building

### CIRCULATION

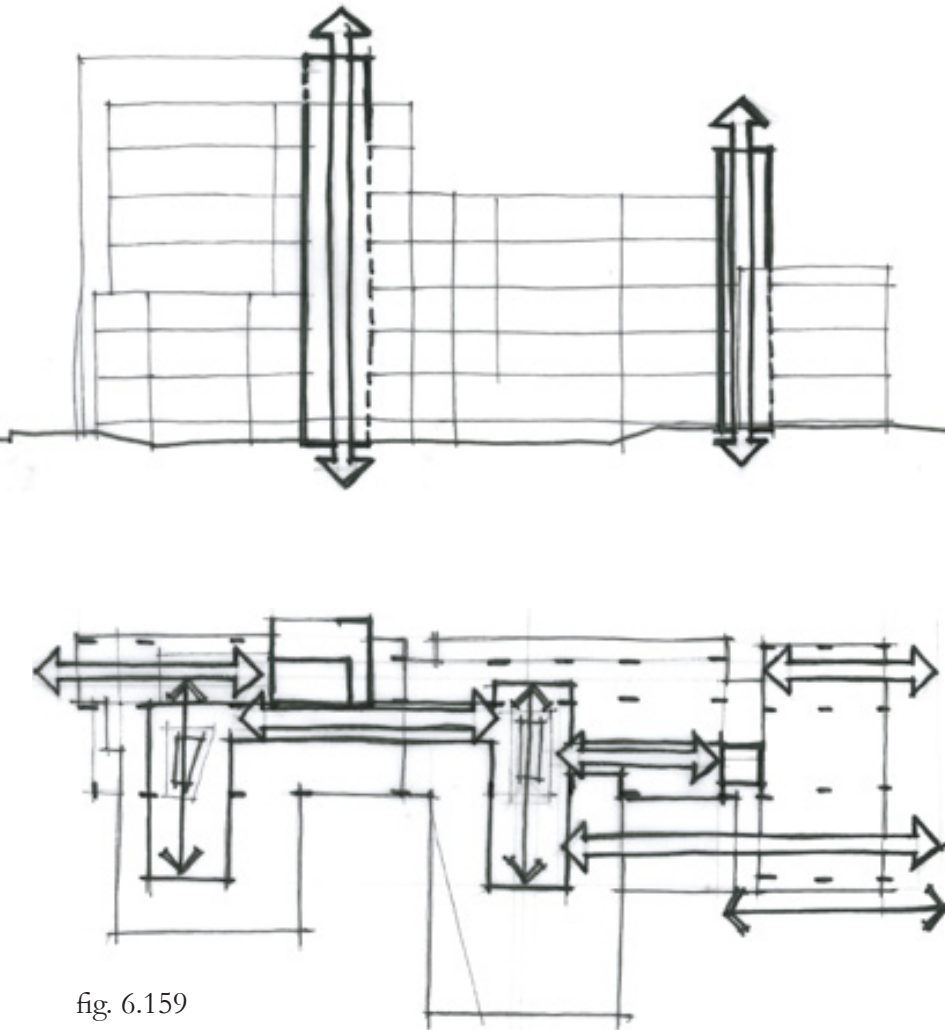


fig. 6.159

### SOLIDS & VOIDS

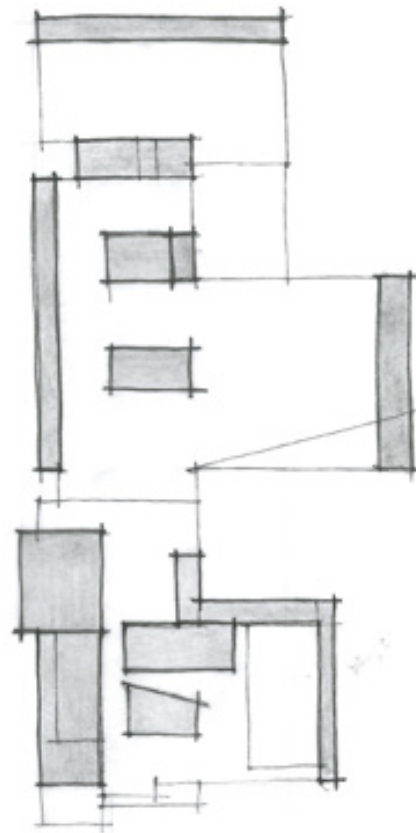


fig. 6.160

### NATURAL LIGHT

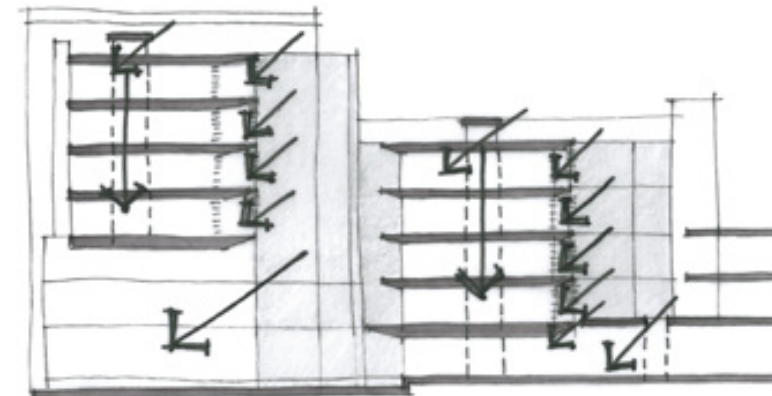


fig. 6.161

### NATURAL VENTILATION

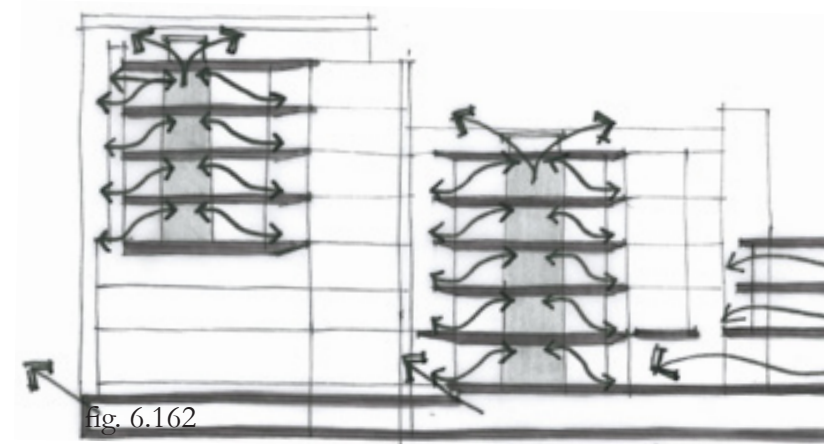
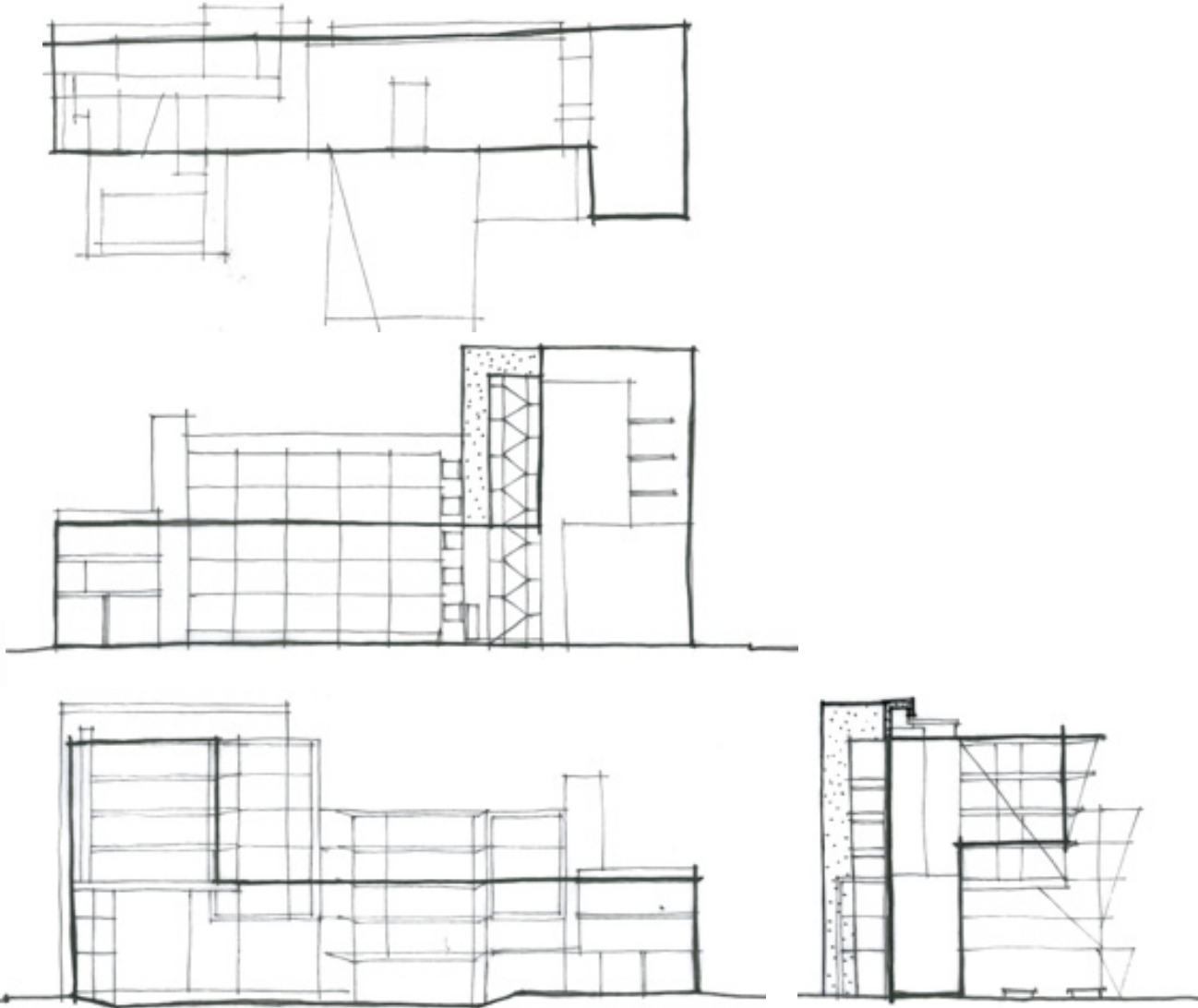


fig. 6.162

fig. 6.163 Massing diagrams illustrating the connection in form and reticulation between the plans, sections and elevations that have been developed

# CONCLUSION

## PLAN TO ELEVATION/SECTION



## CONCLUSION

As is seen from this experimental process, architectural design is a process of continuous change and exploration where ideas that are invited to the design proposal are explored in various ways and then either used or rejected to suit the goals set out at the beginning of the project.

In order to create the desired result many items have been selected to enhance the design intentions and others have been thoughtfully rejected in an attempt to achieve the goals set out previously in the dissertation. Ideas were also chosen that will further enhance the theoretical ideas and substance that the dissertation grounds itself upon.

The design intentions and ideas that have been chosen to finalise the design project will now be further developed on a technical level to achieve the ultimate goal - a fully comprehensive design that creates a facility that can house and emphasise the healing process.

fig. 6.163