



References







References:

Carmona, M., Heath, T., Oc, T. & Tiesdell, S. 2001. *Public Places Urban Spaces, The Dimension of Urban Design*. Architectural Press: Oxford

Birren, F. 1978, *Colour and Human Response: Aspects of light and colour bearing on the reactions of living things and welfare of human beings*. Litton Educational Publishing: New York

Tanner Lectures, Lecture II: April 5, 2007 Glenn_Loury cited from McPherson, Miller, Smith-Lovin & Cook. 2001. "Birds of a Feather: Homophily in Social Networks." *Annual Review of Sociology*, 27, pp. 415-44.

Tajfel, Henri, M., Billig, R.P., Bundy & Flament, C. 1971. "Social Categorization and Intergroup Behaviour." *European Journal of Social Psychology*, 1, pp.149-77.

Alexander, C., Ishikawa S., Silverstein M., with Jacobson M., Fiksdahl-King I., Angel S 1977. *A Pattern Language: Towns, Buildings, Construction*, Oxford University Press: New York

UP in a Nutshell, University of Pretoria, Pretoria, South Africa marketing pamphlet.

Van Wagner , K . 2007. *Colour Psychology- Yellow* [Online] available from http://psychology.about.com/od/sensationandperception/a/color_yellow.html [Accessed 16 September 2008]

Decker T, Graupner A, Rasmus H., 2006. Contemporary South African Architecture in a Landscape of Transition, Double Story: Cape Town

Raman, PG. 2002. Building as a Bridge. *Leading Architecture*, September/October pg 44-45

Bibliography:

Abel C. *Architecture and Identity: responses to cultural and technological change* 2nd edition , Architectural press, Oxford

IFI, (2007) in Niebuhr I. 2007, *Healing Activities Centre*, Department of Architecture, University of Pretoria. Pretoria

Ras A. 1997, *Cultural spine- University of Pretoria : A Discrete Layering of Interactive Multicultural Campus Activity*, University of Pretoria. Pretoria.

Envy C, 2008. Coimbra artistic dynamics. *Attitude: Interior Design*, 21

Butina Watson, G. & Bentley, I. 2007 *Identity by design*. Elsevier Ltd, Oxford





UNIVERSITEIT VAN PRETORIA
UNIVERSITY OF PRETORIA
YUNIBESITHI YA PRETORIA



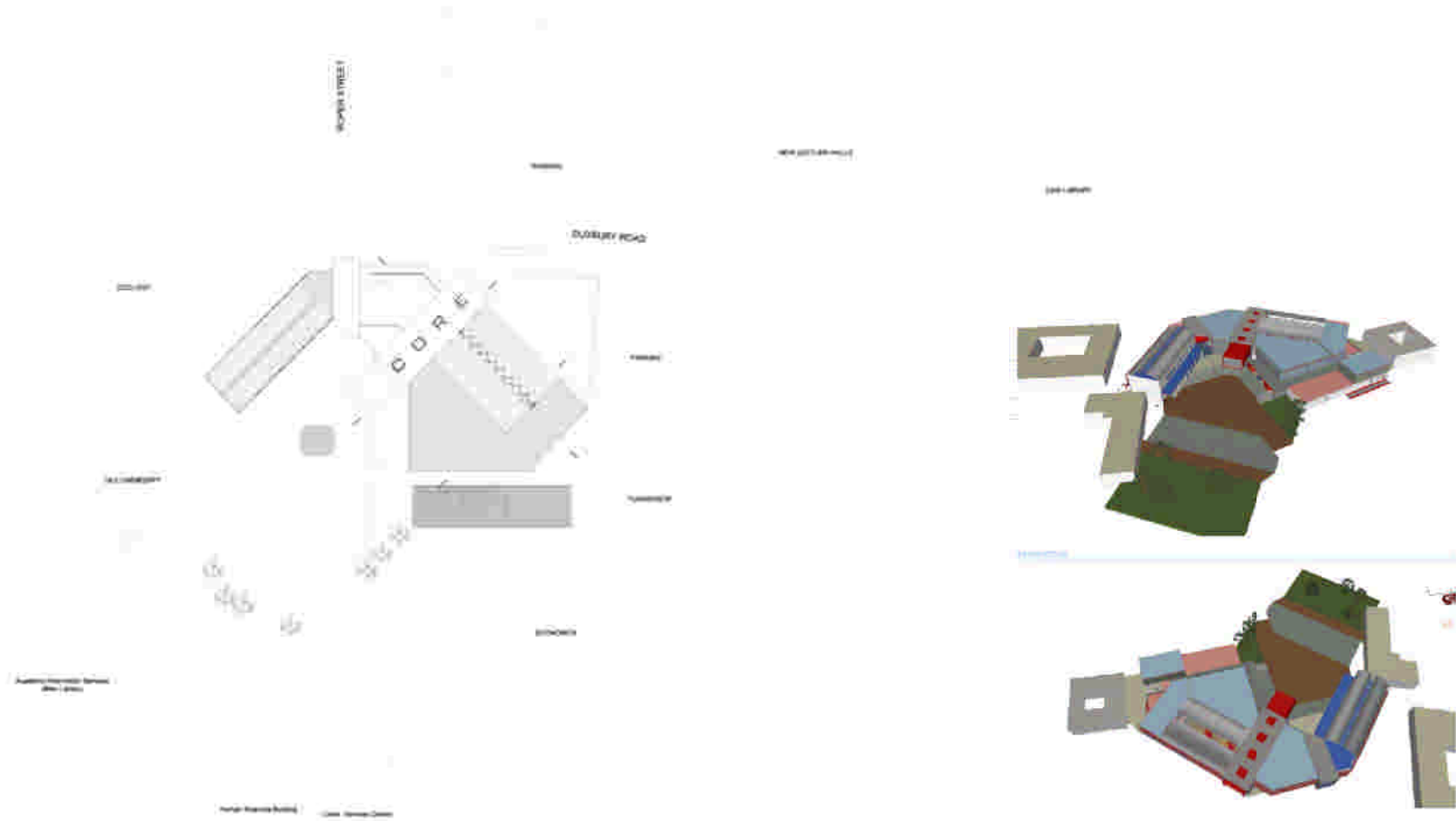
Appendix 1

Technical Drawings



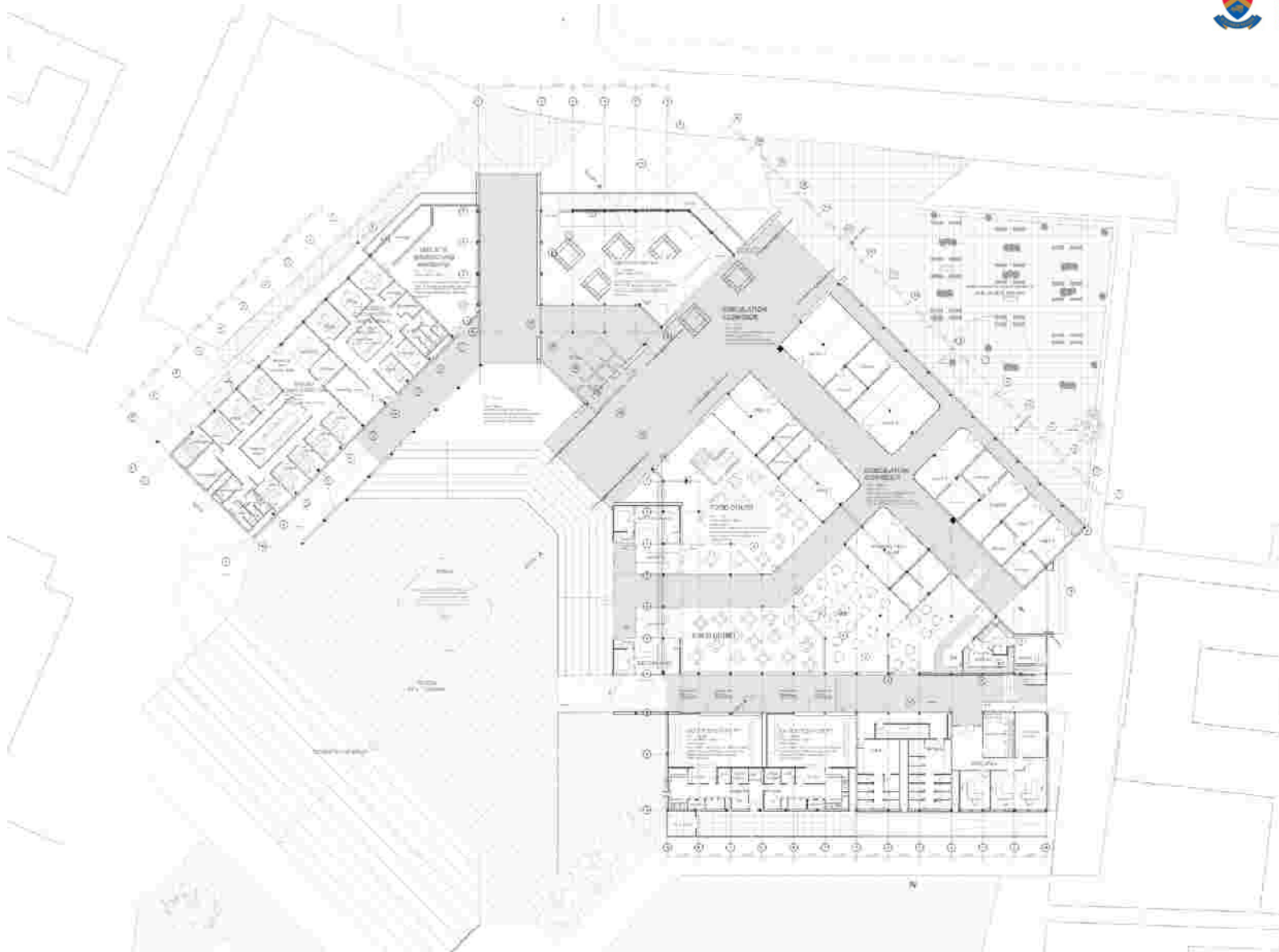


UNIVERSITEIT VAN PRETORIA
UNIVERSITY OF PRETORIA
YUNIBESITHI YA PRETORIA



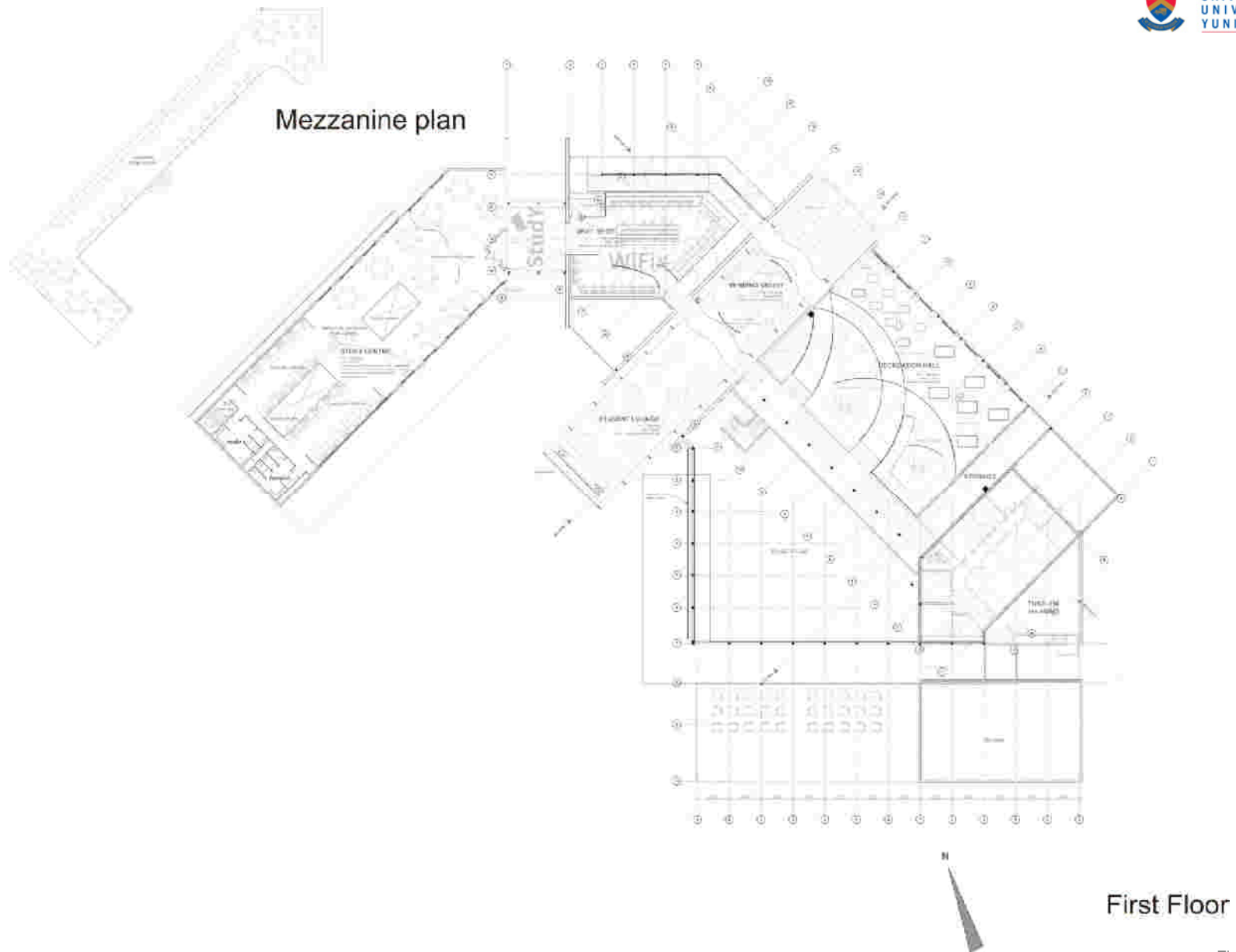
Site Plan (d.n.s.)

Figure 5.22



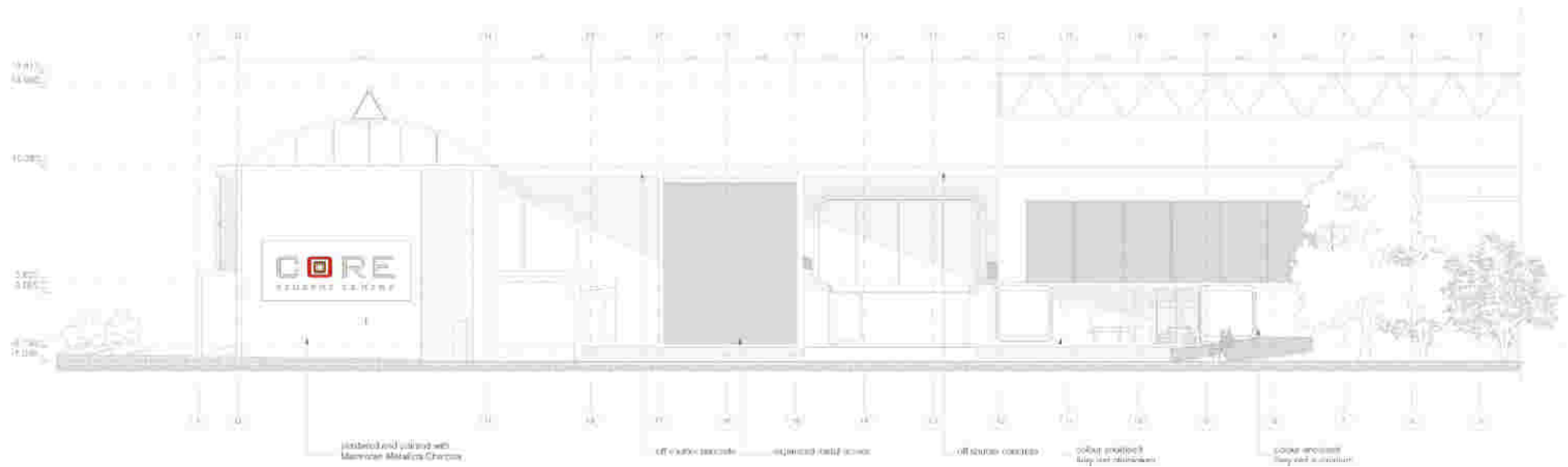
Ground Floor Plan (d.n.s.)

Figure 5.23



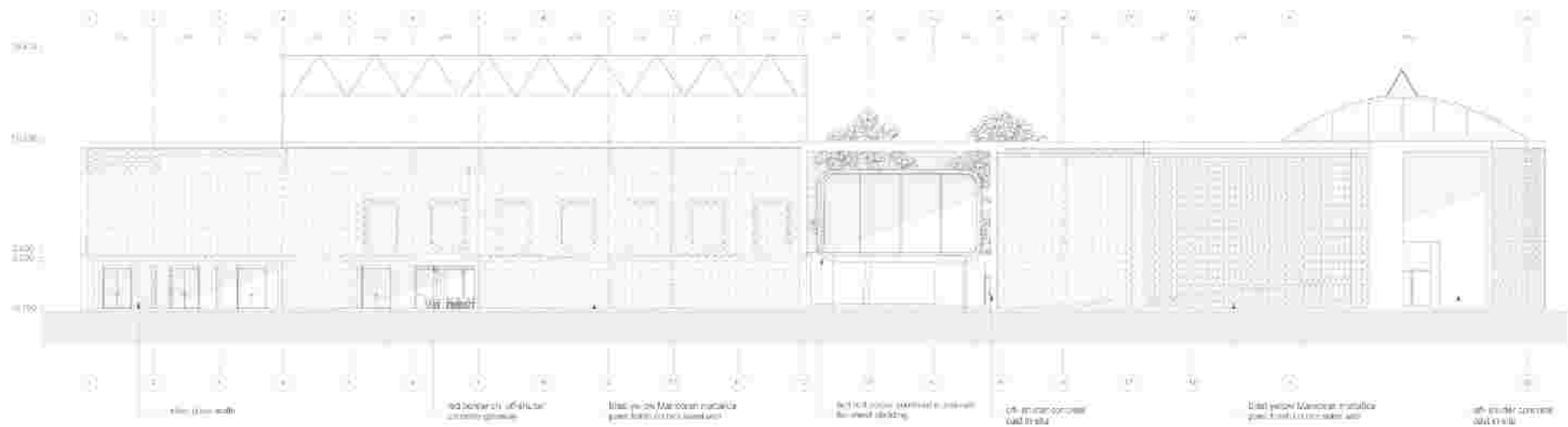
Ground Floor Plan (d.n.s.)

Figure 5.23



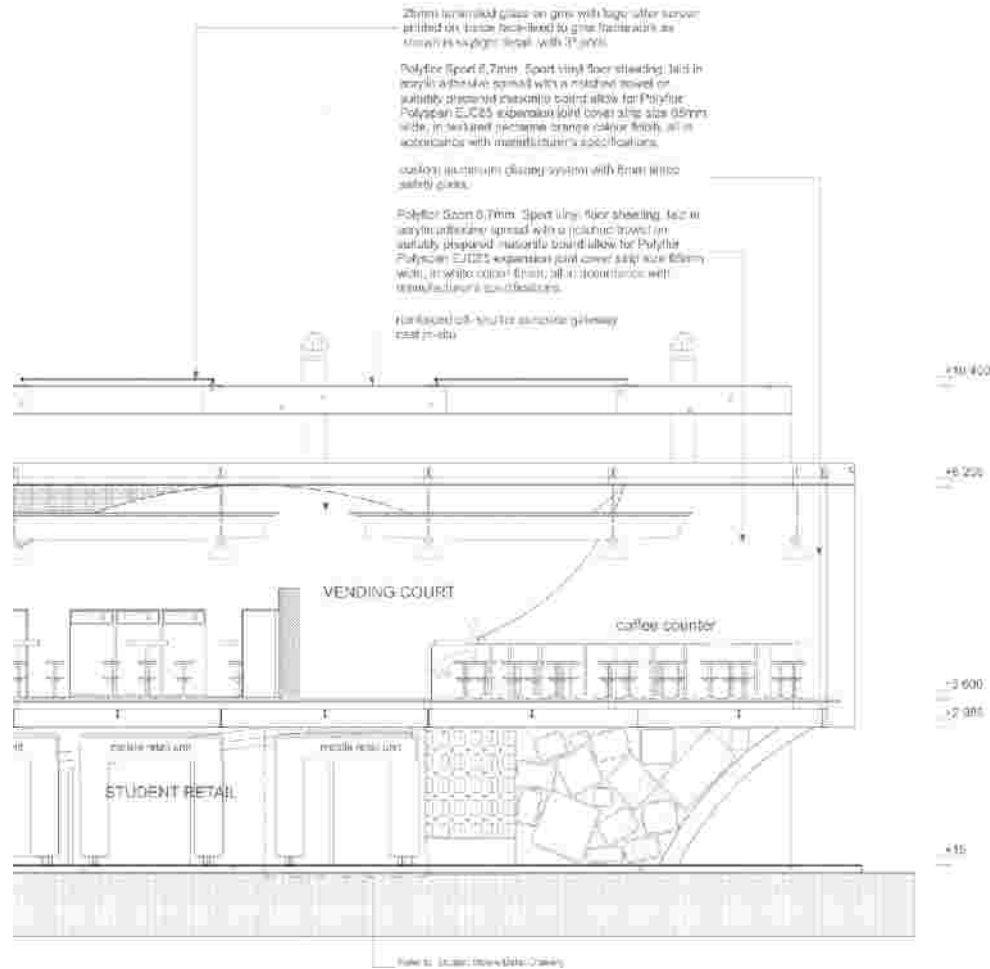
South Elevation (d.n.s.)

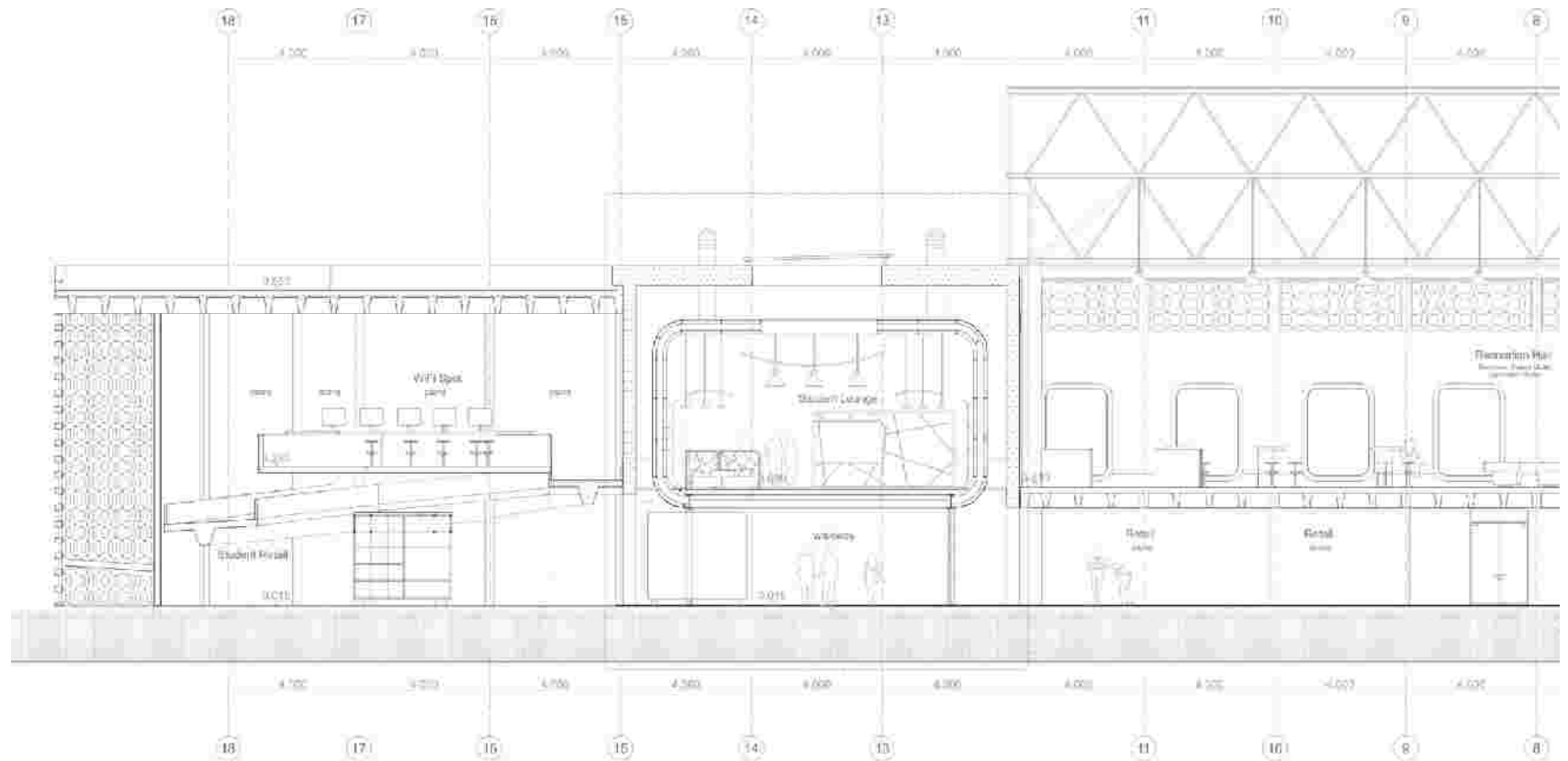
Figure 5.24



North Elevation (d.n.s.)

Figure 5.25

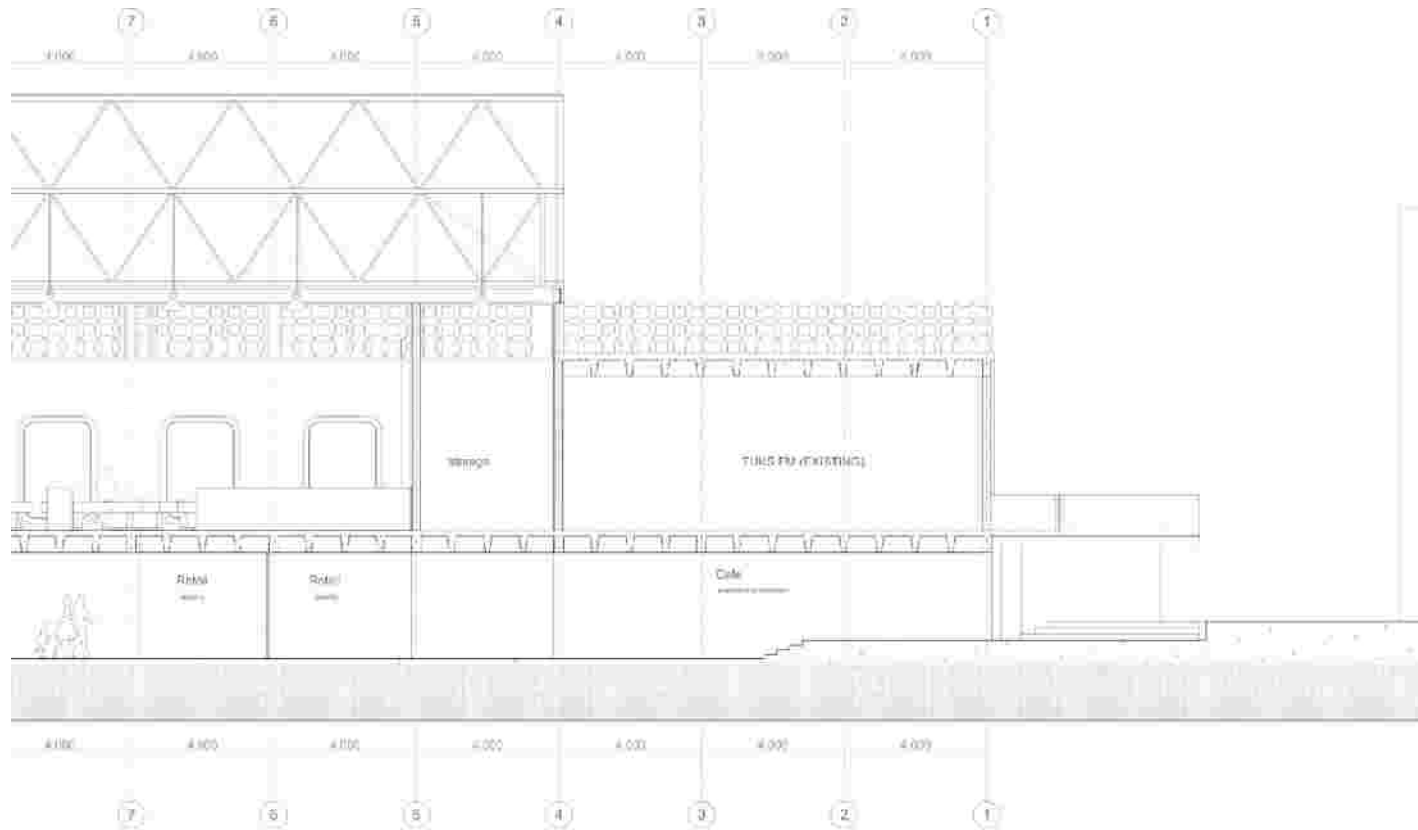


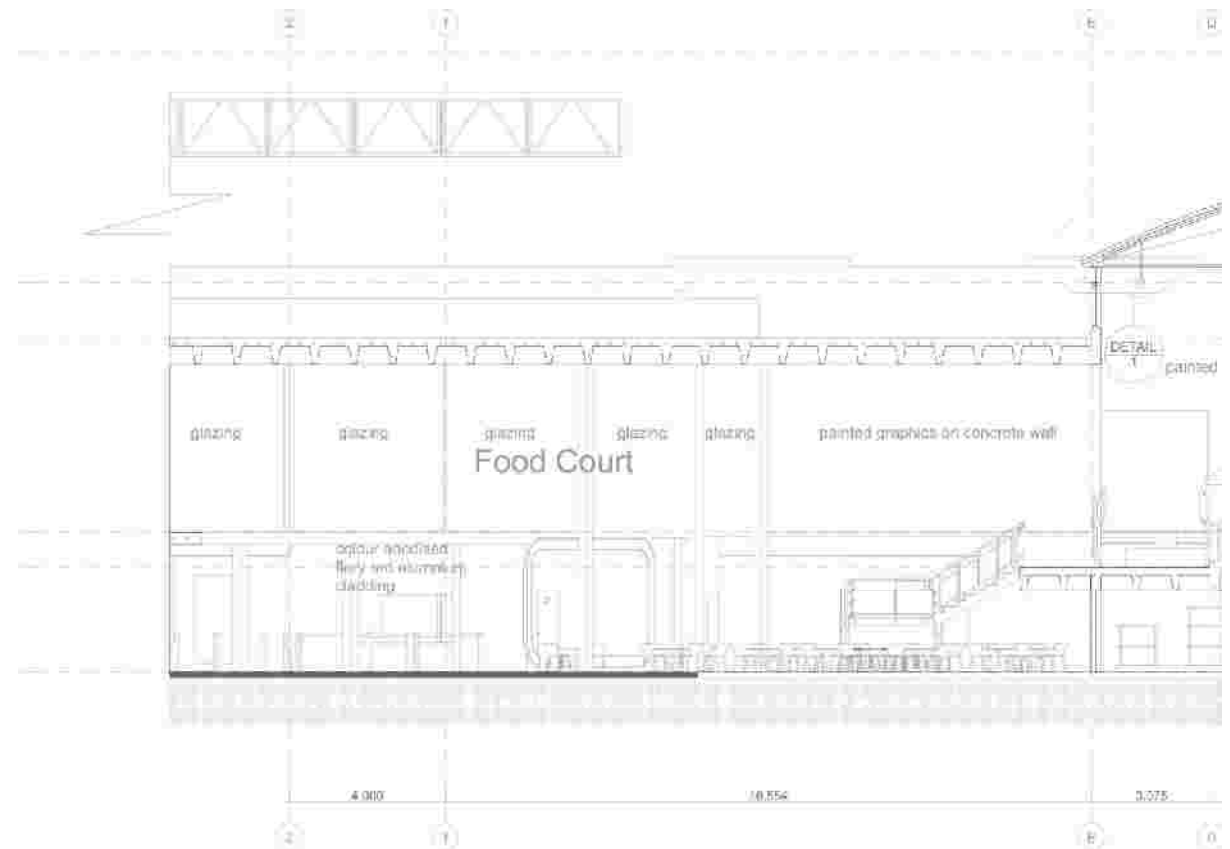


Section 2: Section through main focus area(d.n.s.)

Figure 5.27







Section 3: Section through food court, recreation hall and retail (d.n.s.)

Figure 5.28





Figure 5.29

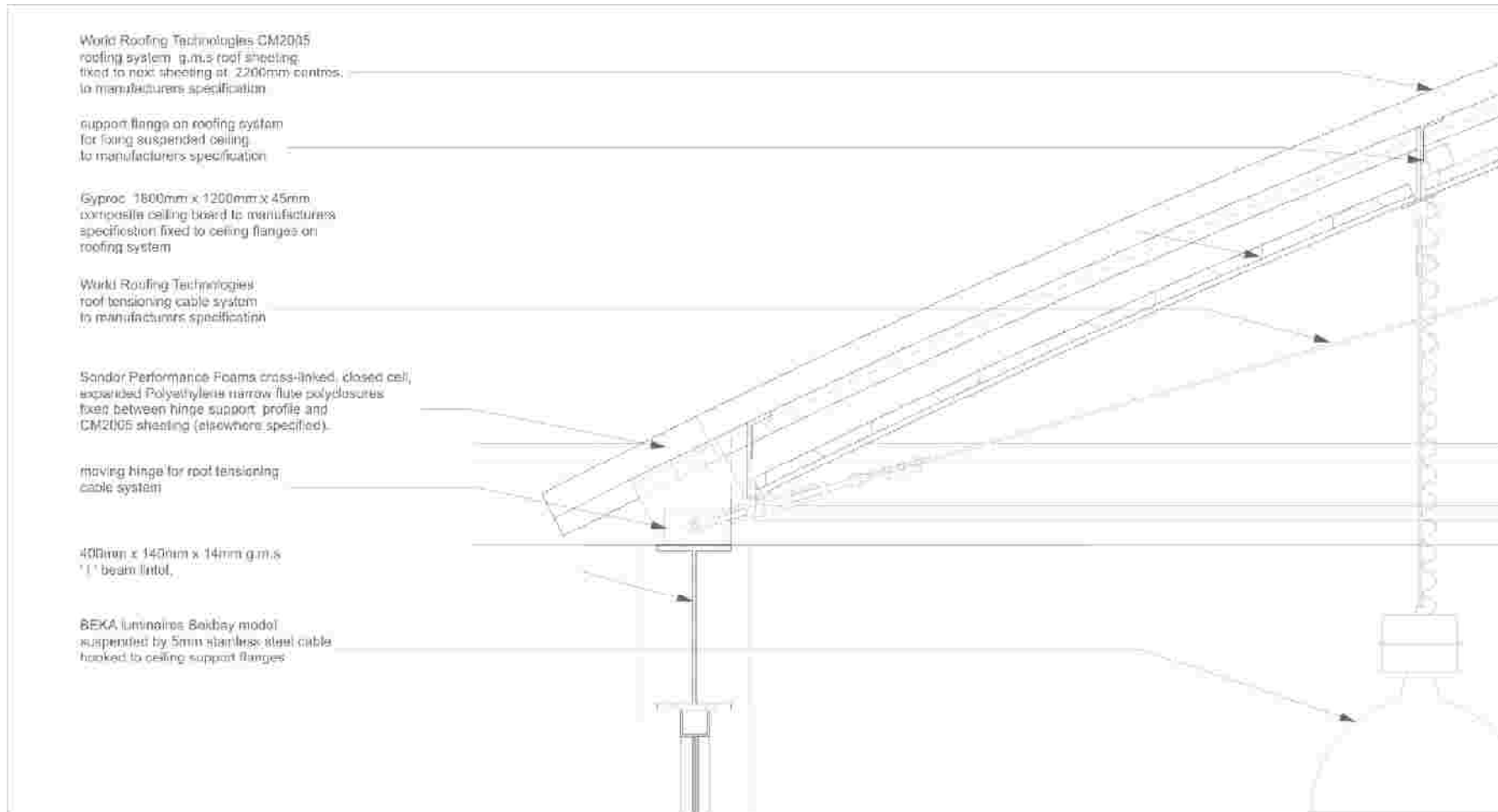


Figure 5.30

Detail: Detail 1- Roof detail, refer to Section 3 Figure 29 (d.n.s.)

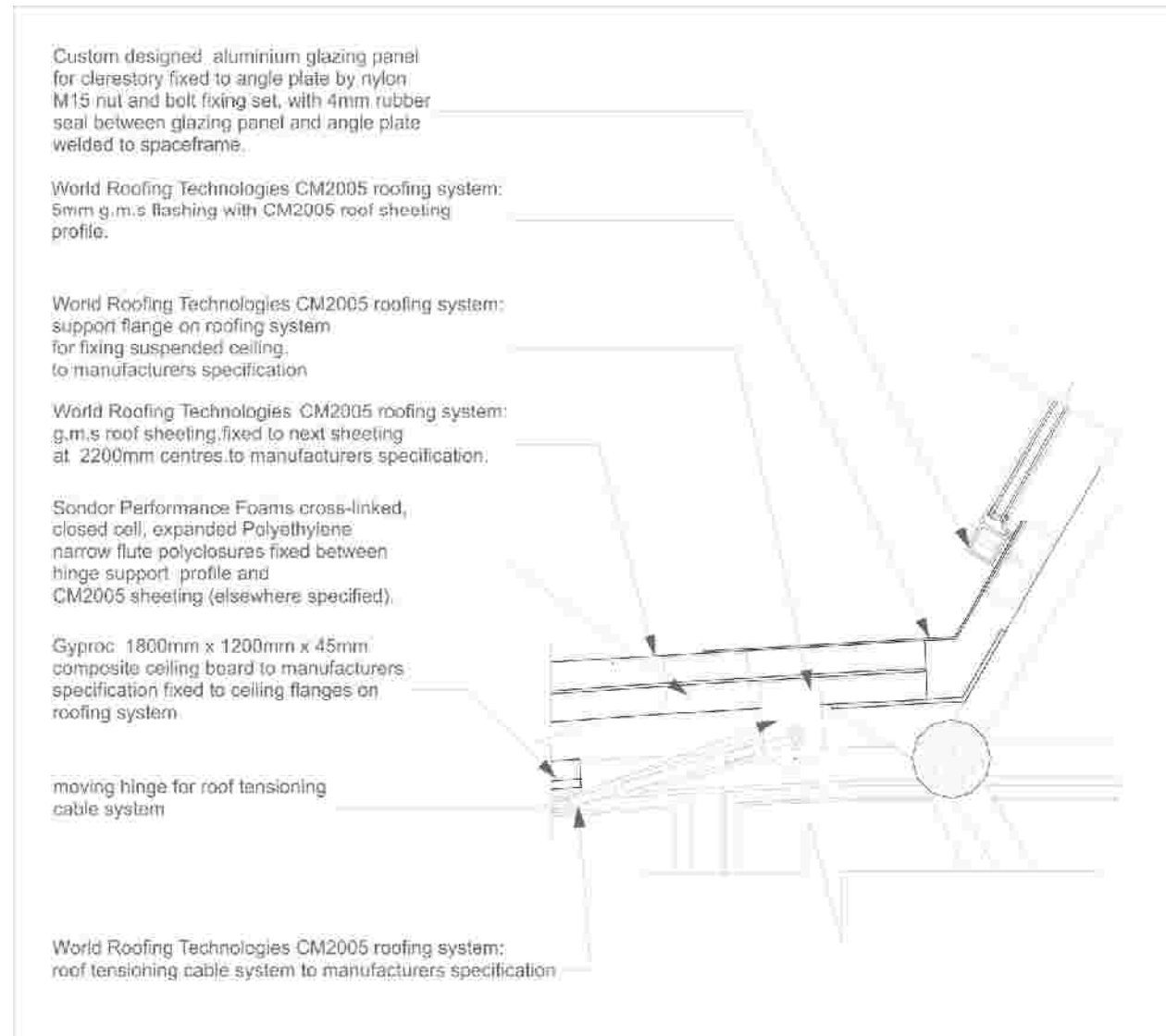


Figure 5.31

Detail: Detail 2- Roof detail, refer to Section 3 Figure 29 (d.n.s.)

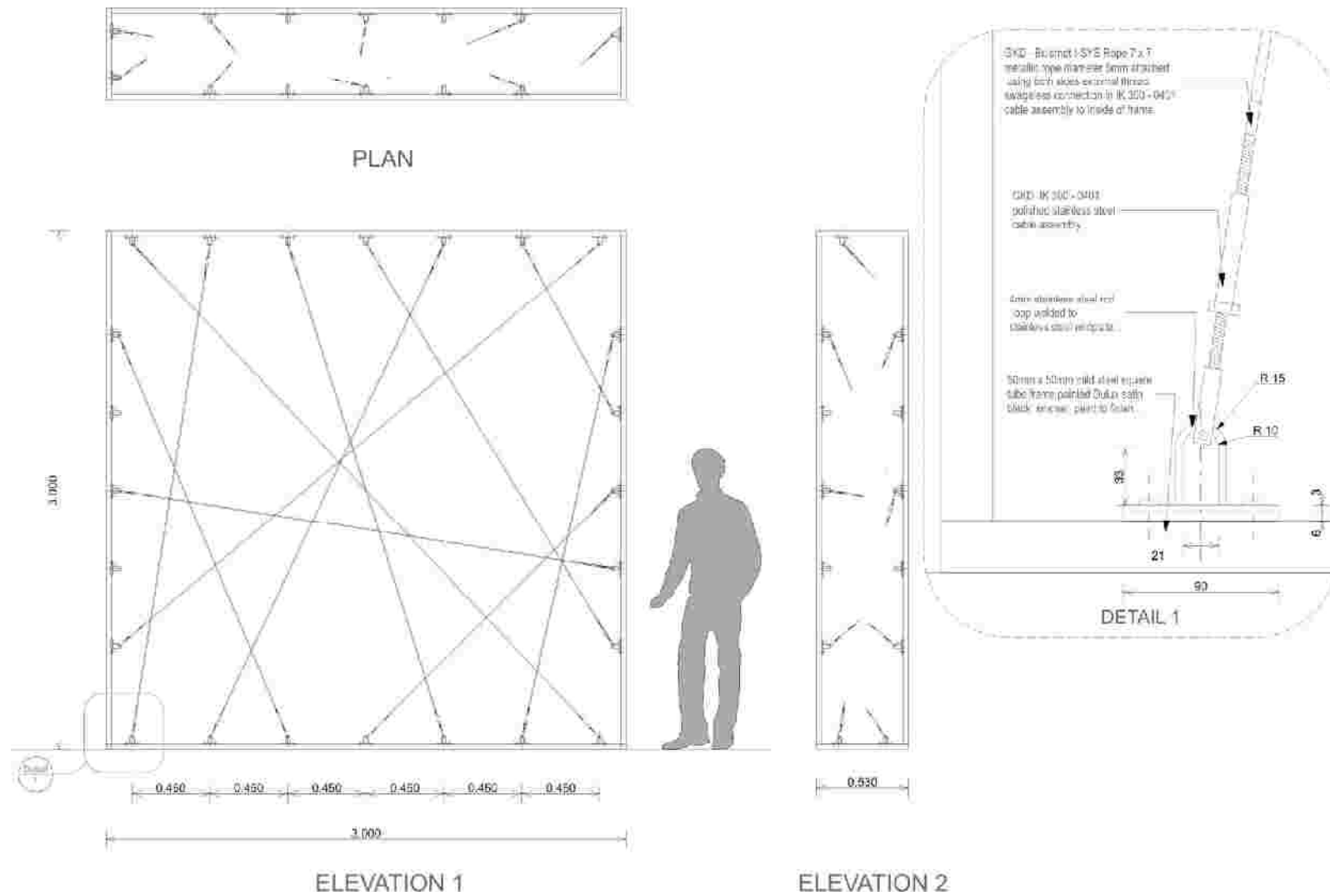


Figure 5.32



Staircase Design (d.n.s)



Staircase Details 1-3 - refer to Staircase Design Figure 5. X design (d.n.s)