

# B

---

Existing Munitoria drawings	200
Statement of Significance	216

# ene

---

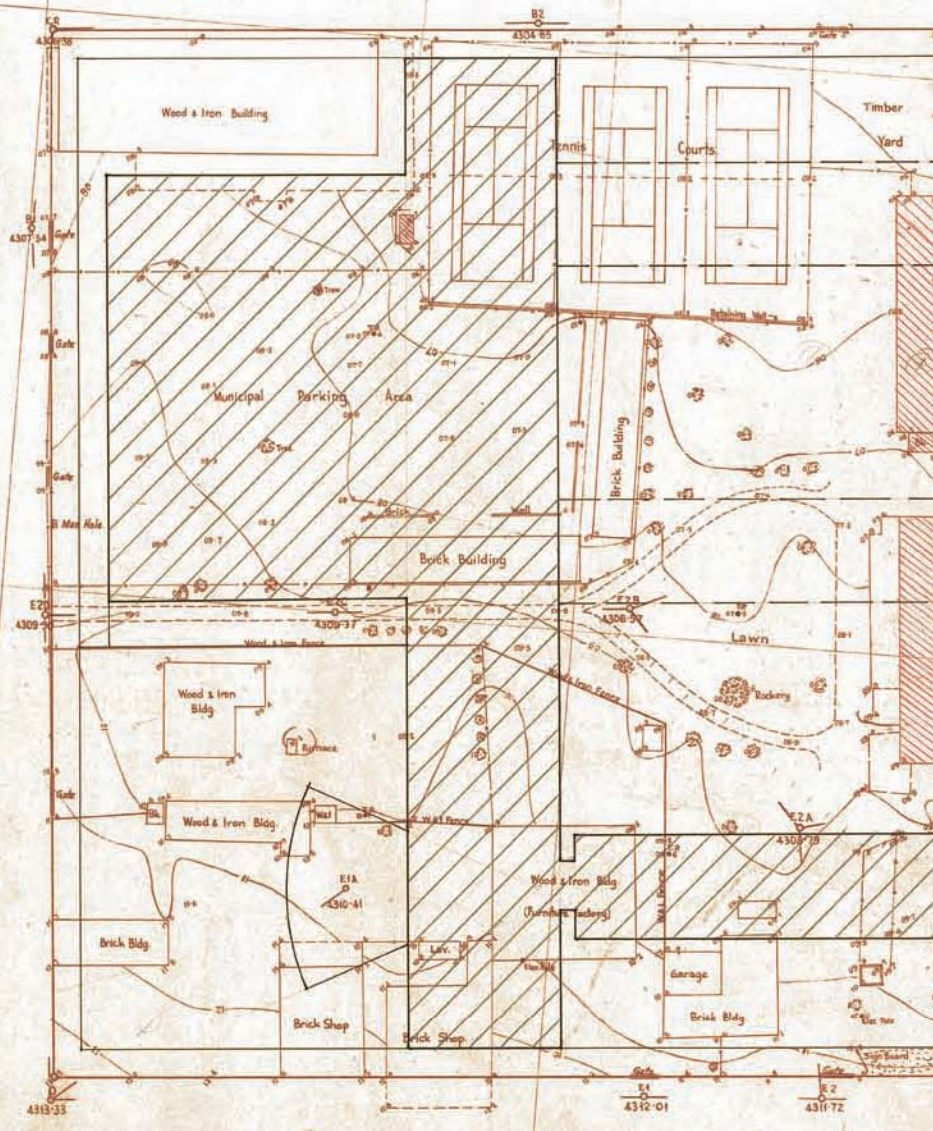
Apo  
dix B

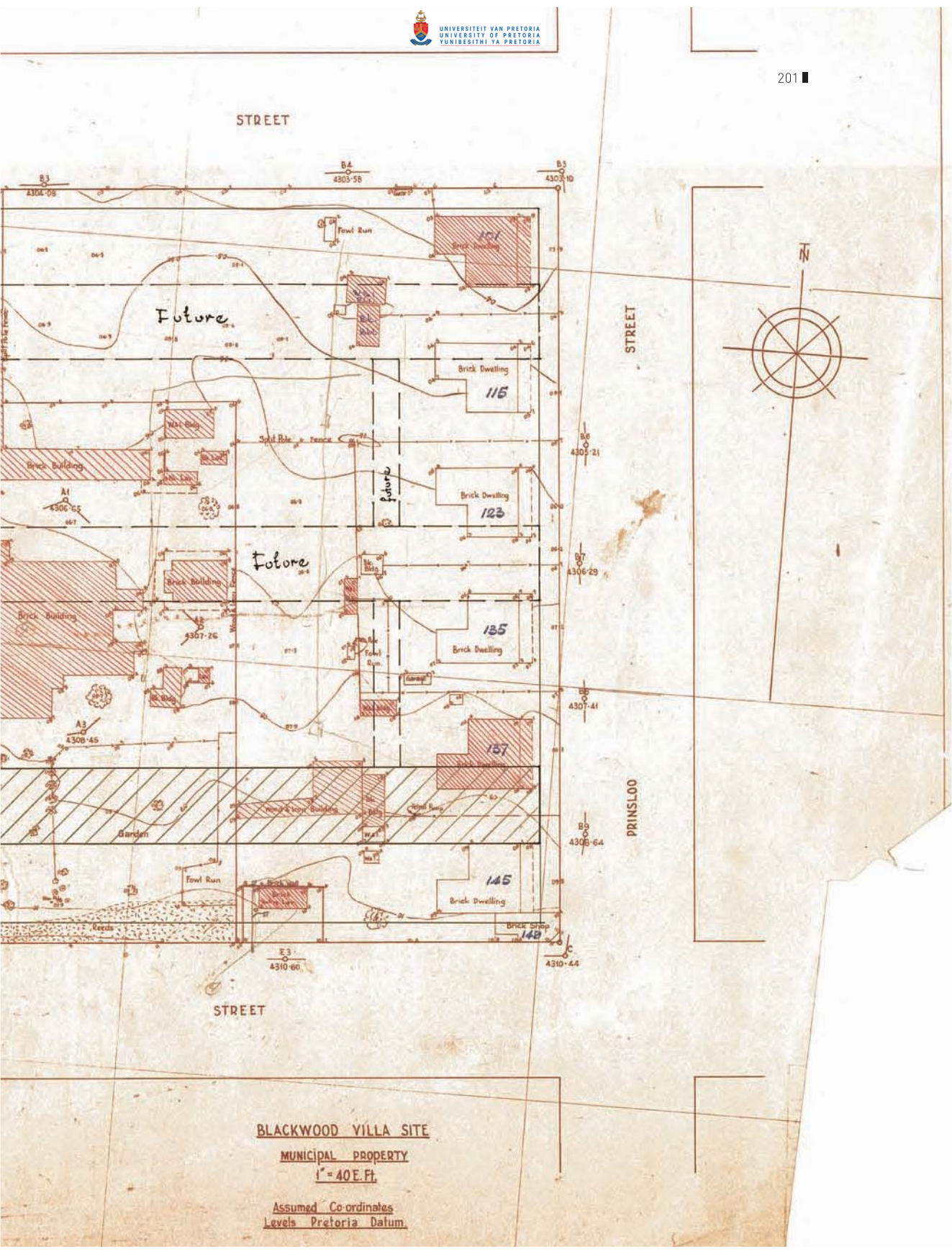
PROES

STREET

VAN DER WALT

VERMEULEN





STREET

STREET

PRINSLOO

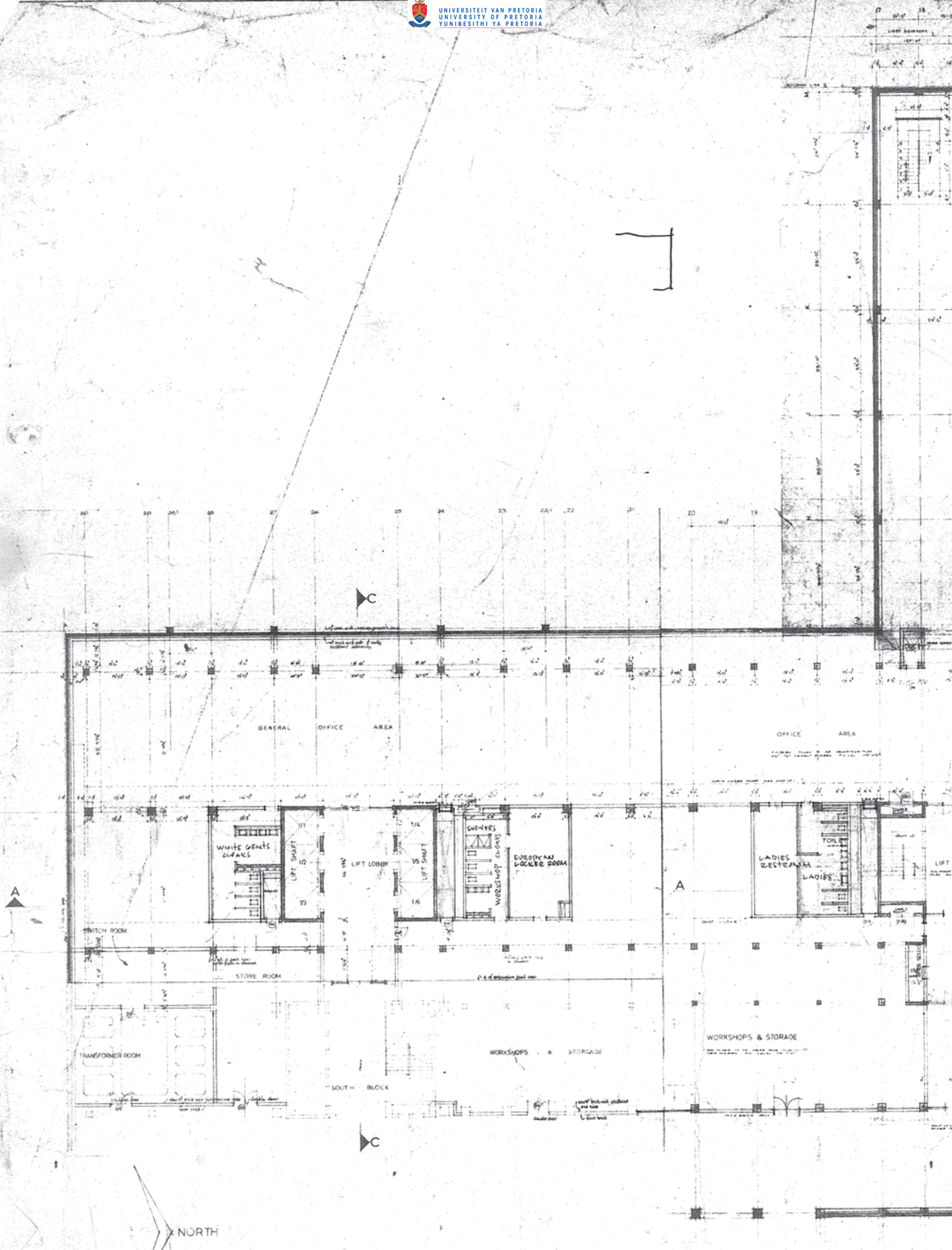
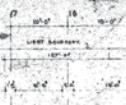
STREET

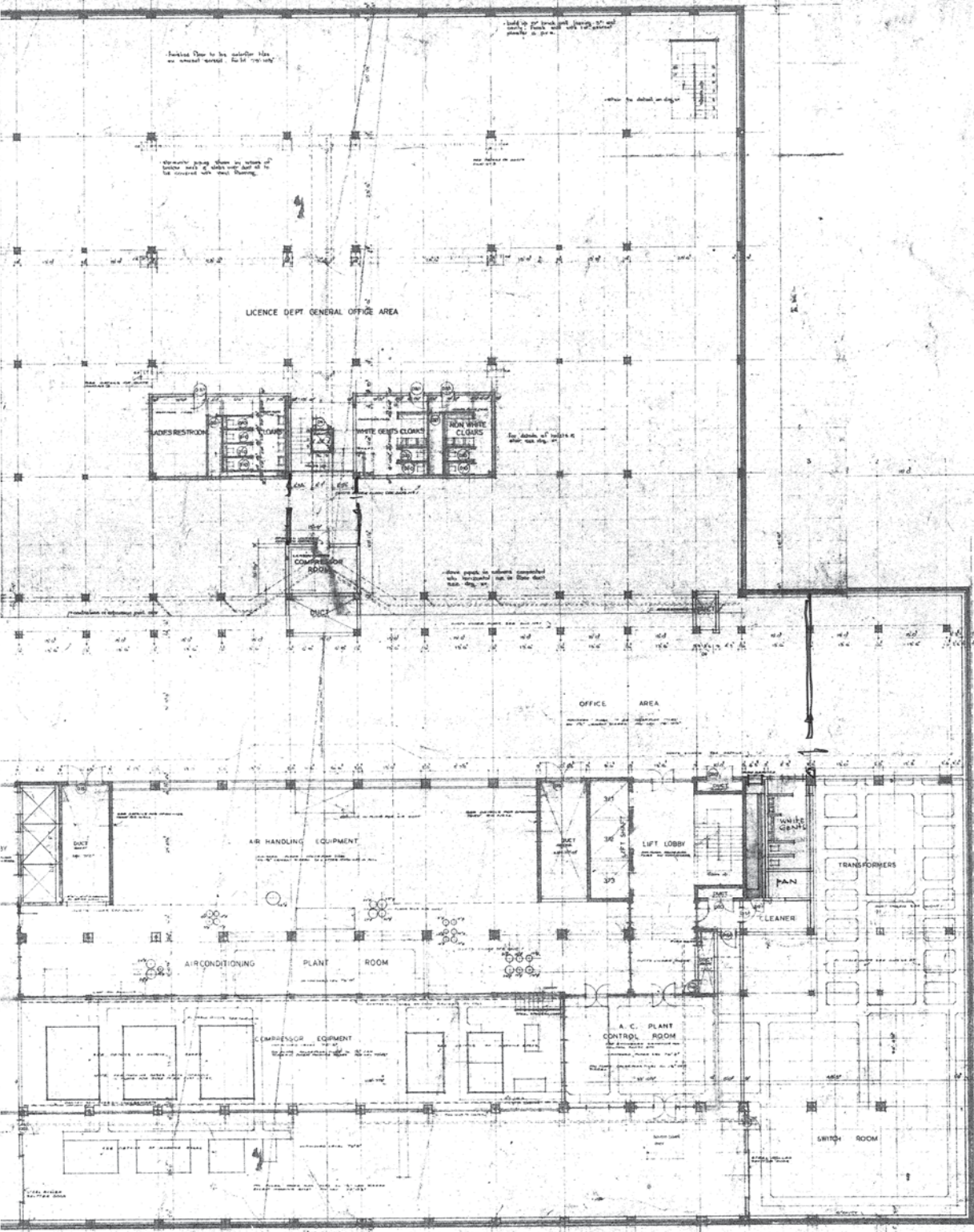
BLACKWOOD VILLA SITE

MUNICIPAL PROPERTY

1" = 40 FT.

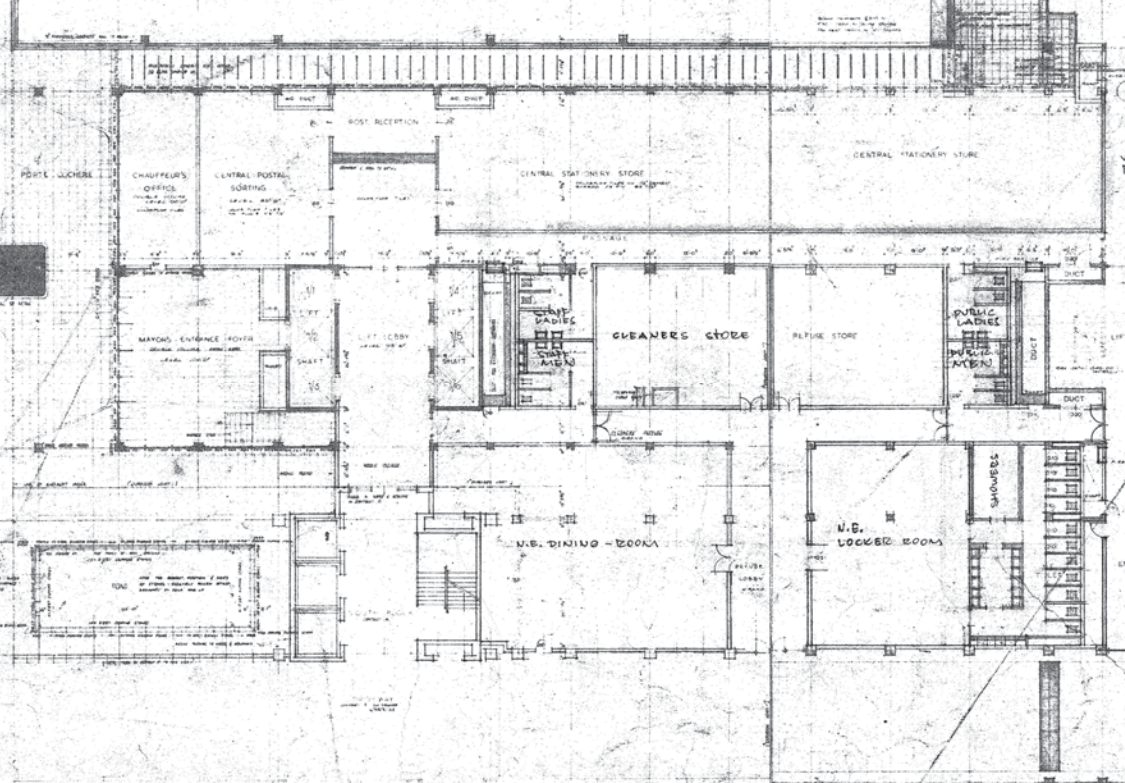
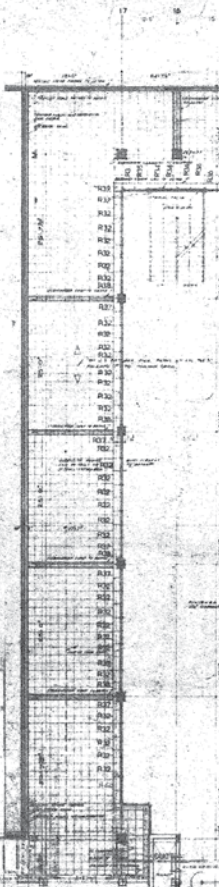
Assumed Co-ordinates  
Levels Pretoria Datum







30 29 28 27 26 25 24 23 22 21 20 19

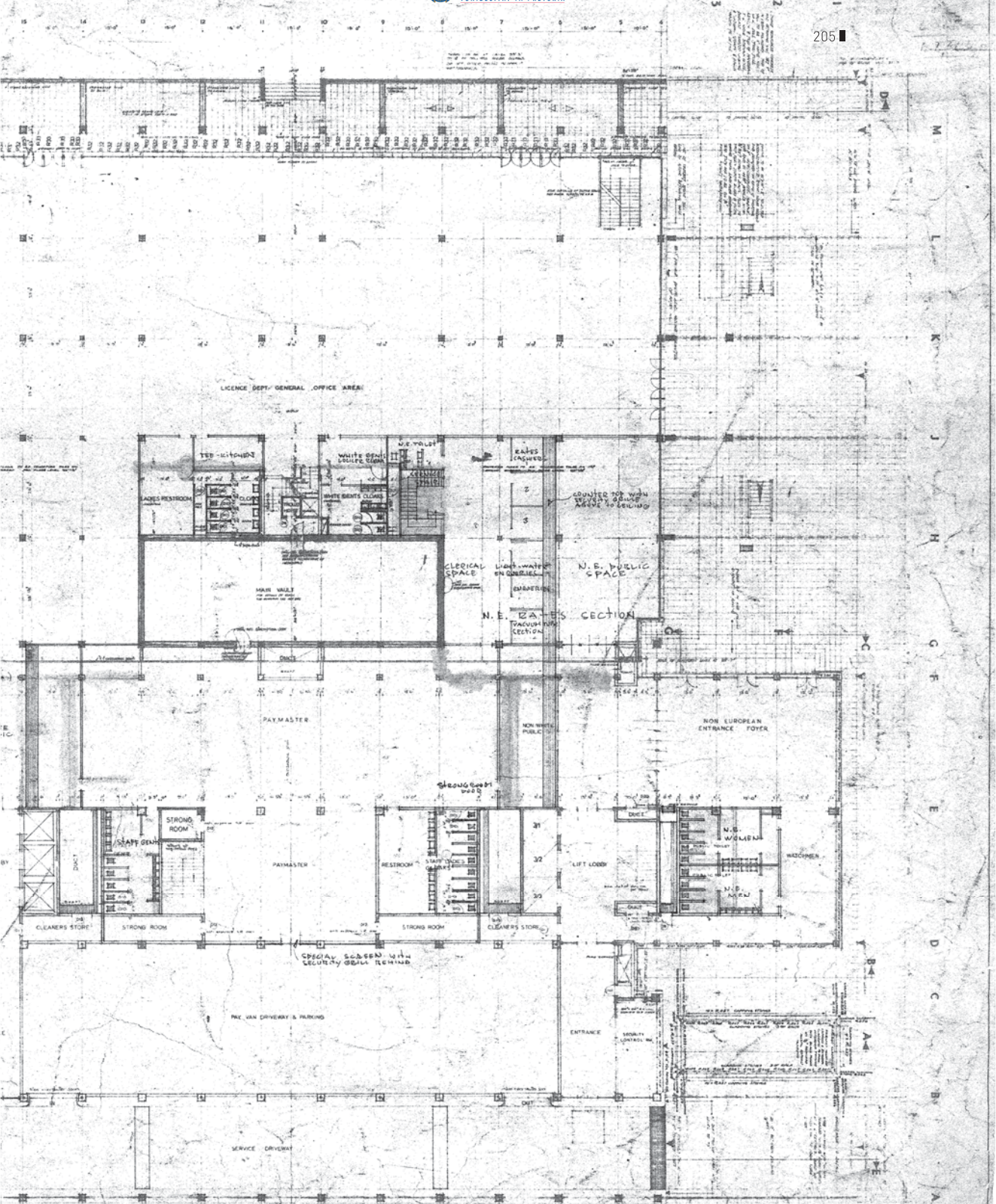


WEST BLOCK  
CONTRACT 5

FILE	JOB	DWG	SCALE	DATE
70	6/88/5	77	1/16'-0"	JULY 65

NUWE MUNISIPALE KANTORE  
NEW MUNICIPAL OFFICES

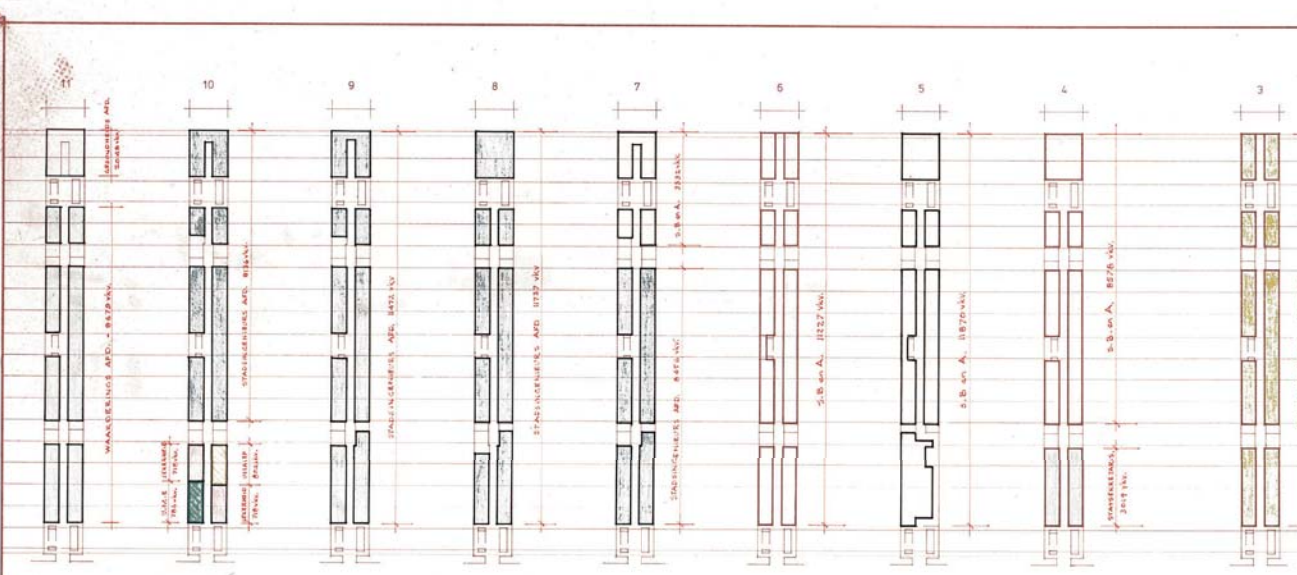
MU

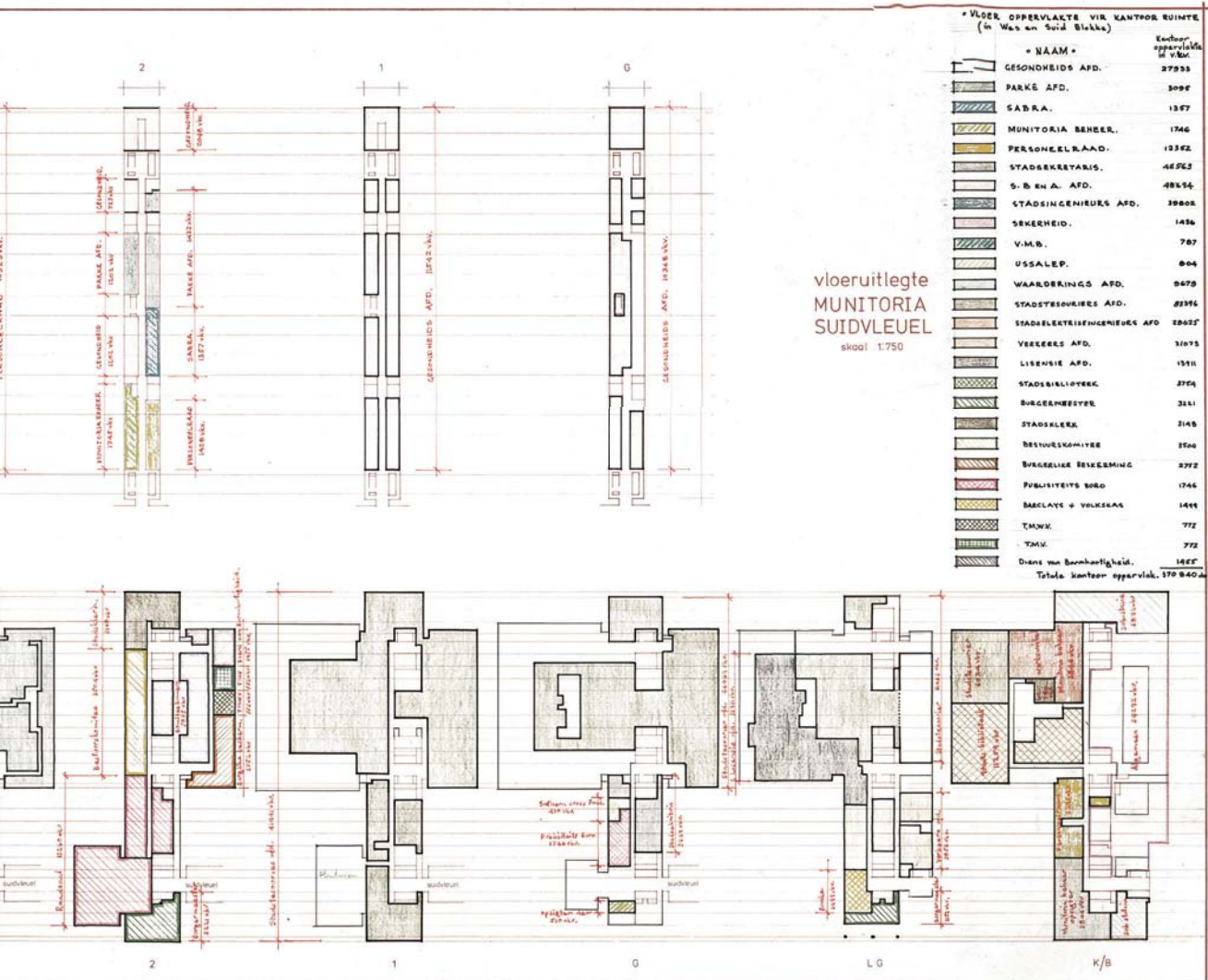




vloeruitlegte  
MUNITORIA  
WESWLEVEL  
skaal 1:750

PLAN A





SAKKELE SEBETI SEBETSI/STRAAT:

1. Aftelling Owerhoed
2. Speer van Diep van Belastingoewer
3. W.C. Edele
4. Aangewingsel
5. Aftelling Belastingoewer
6. Belastingoewer
7. Toilet
8. W.C. van Belastingoewer
9. Belastingoewer
10. Aftelling van Diep Belastingoewer
11. Belastingoewer
12. Belastingoewer
13. Belastingoewer
14. Belastingoewer
15. Belastingoewer
16. Belastingoewer
17. Belastingoewer
18. Belastingoewer
19. Belastingoewer
20. Belastingoewer
21. Belastingoewer
22. Belastingoewer
23. Belastingoewer
24. Belastingoewer
25. Belastingoewer
26. Belastingoewer
27. Belastingoewer

SAKKELE SEBETSI SEBETSI/STRAAT:

1. Owerhoed
2. Speer van Diep van Belastingoewer
3. W.C. Edele
4. Aangewingsel
5. Aftelling Belastingoewer
6. Belastingoewer
7. Toilet
8. W.C. van Belastingoewer
9. Belastingoewer
10. Aftelling van Diep Belastingoewer
11. Belastingoewer
12. Belastingoewer
13. Belastingoewer
14. Belastingoewer
15. Belastingoewer
16. Belastingoewer
17. Belastingoewer
18. Belastingoewer
19. Belastingoewer
20. Belastingoewer
21. Belastingoewer
22. Belastingoewer
23. Belastingoewer
24. Belastingoewer
25. Belastingoewer
26. Belastingoewer
27. Belastingoewer

SAKKELE SEBETSI SEBETSI/STRAAT:

1. Owerhoed
2. Speer van Diep van Belastingoewer
3. W.C. Edele
4. Aangewingsel
5. Aftelling Belastingoewer
6. Belastingoewer
7. Toilet
8. W.C. van Belastingoewer
9. Belastingoewer
10. Aftelling van Diep Belastingoewer
11. Belastingoewer
12. Belastingoewer
13. Belastingoewer
14. Belastingoewer
15. Belastingoewer
16. Belastingoewer
17. Belastingoewer
18. Belastingoewer
19. Belastingoewer
20. Belastingoewer
21. Belastingoewer
22. Belastingoewer
23. Belastingoewer
24. Belastingoewer
25. Belastingoewer
26. Belastingoewer
27. Belastingoewer

SAKKELE SEBETSI SEBETSI/STRAAT:

1. Owerhoed
2. Speer van Diep van Belastingoewer
3. W.C. Edele
4. Aangewingsel
5. Aftelling Belastingoewer
6. Belastingoewer
7. Toilet
8. W.C. van Belastingoewer
9. Belastingoewer
10. Aftelling van Diep Belastingoewer
11. Belastingoewer
12. Belastingoewer
13. Belastingoewer
14. Belastingoewer
15. Belastingoewer
16. Belastingoewer
17. Belastingoewer
18. Belastingoewer
19. Belastingoewer
20. Belastingoewer
21. Belastingoewer
22. Belastingoewer
23. Belastingoewer
24. Belastingoewer
25. Belastingoewer
26. Belastingoewer
27. Belastingoewer

SAKKELE SEBETSI SEBETSI/STRAAT:

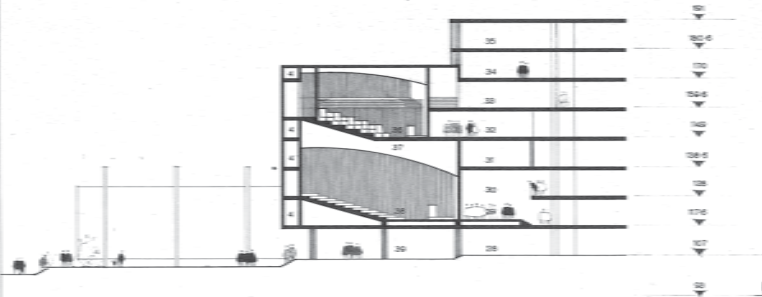
1. Owerhoed
2. Speer van Diep van Belastingoewer
3. W.C. Edele
4. Aangewingsel
5. Aftelling Belastingoewer
6. Belastingoewer
7. Toilet
8. W.C. van Belastingoewer
9. Belastingoewer
10. Aftelling van Diep Belastingoewer
11. Belastingoewer
12. Belastingoewer
13. Belastingoewer
14. Belastingoewer
15. Belastingoewer
16. Belastingoewer
17. Belastingoewer
18. Belastingoewer
19. Belastingoewer
20. Belastingoewer
21. Belastingoewer
22. Belastingoewer
23. Belastingoewer
24. Belastingoewer
25. Belastingoewer
26. Belastingoewer
27. Belastingoewer

SAKKELE SEBETSI SEBETSI/STRAAT:

1. Owerhoed
2. Speer van Diep van Belastingoewer
3. W.C. Edele
4. Aangewingsel
5. Aftelling Belastingoewer
6. Belastingoewer
7. Toilet
8. W.C. van Belastingoewer
9. Belastingoewer
10. Aftelling van Diep Belastingoewer
11. Belastingoewer
12. Belastingoewer
13. Belastingoewer
14. Belastingoewer
15. Belastingoewer
16. Belastingoewer
17. Belastingoewer
18. Belastingoewer
19. Belastingoewer
20. Belastingoewer
21. Belastingoewer
22. Belastingoewer
23. Belastingoewer
24. Belastingoewer
25. Belastingoewer
26. Belastingoewer
27. Belastingoewer



LANGSNIET DEUR BELASTINGSAL  
LONG SECTION THROUGH RATES HALL

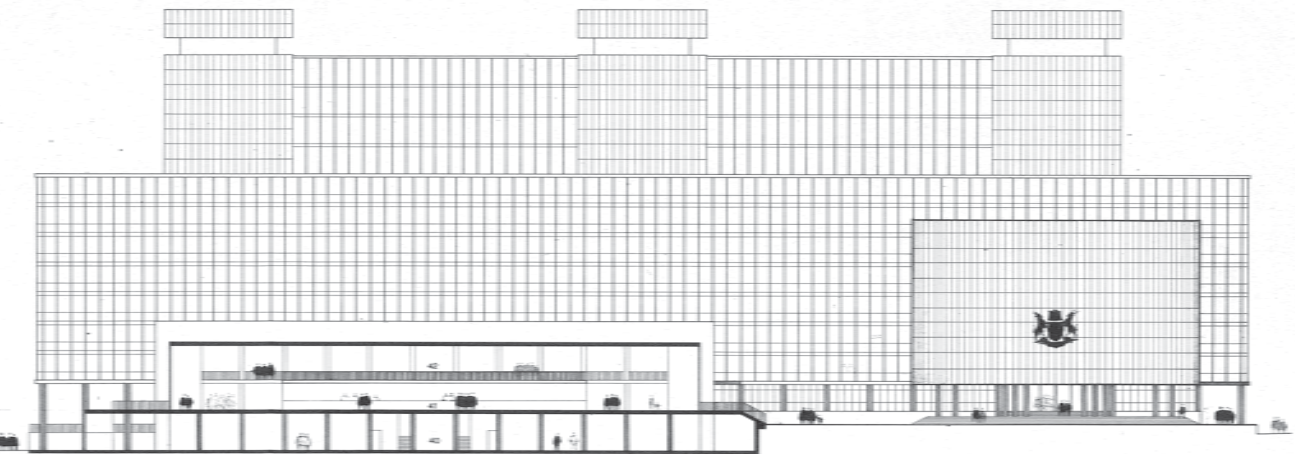
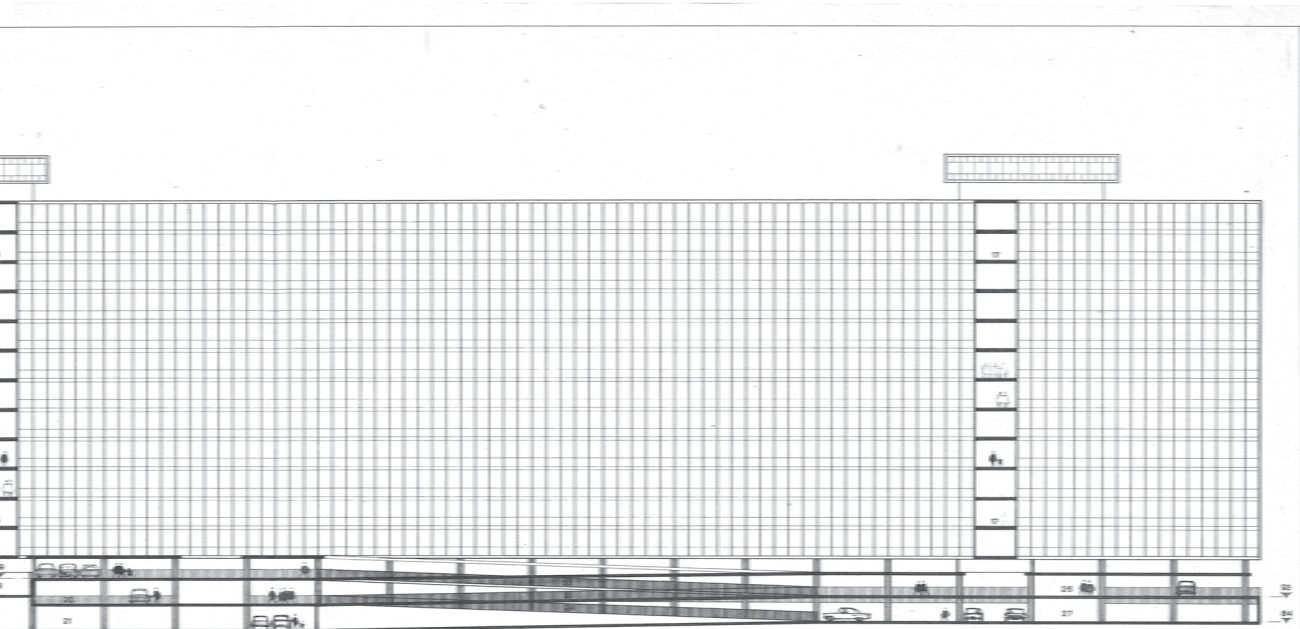


SNIET DEUR RAADSAL EN GEVOORSAL  
SECTION THROUGH COUNCIL CHAMBER AND AUDITORIUM

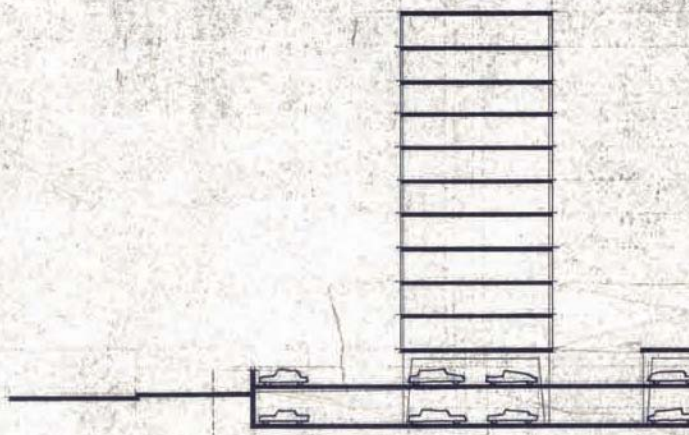


**BLACKWOOD VILLA**

MUNISIPALE KANTORE - PRETORIA - MUNICIPAL OFFICES  
ARGITEKTE BURG LODGE & BURG ARCHITECTS



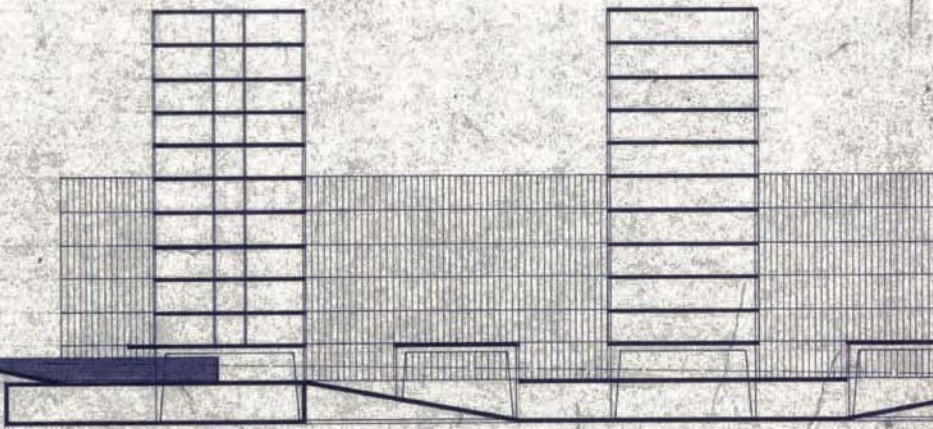
DWARSSEKTY DEUR BELASTINGSKAL  
CROSS SECTION THROUGH RATES HALL



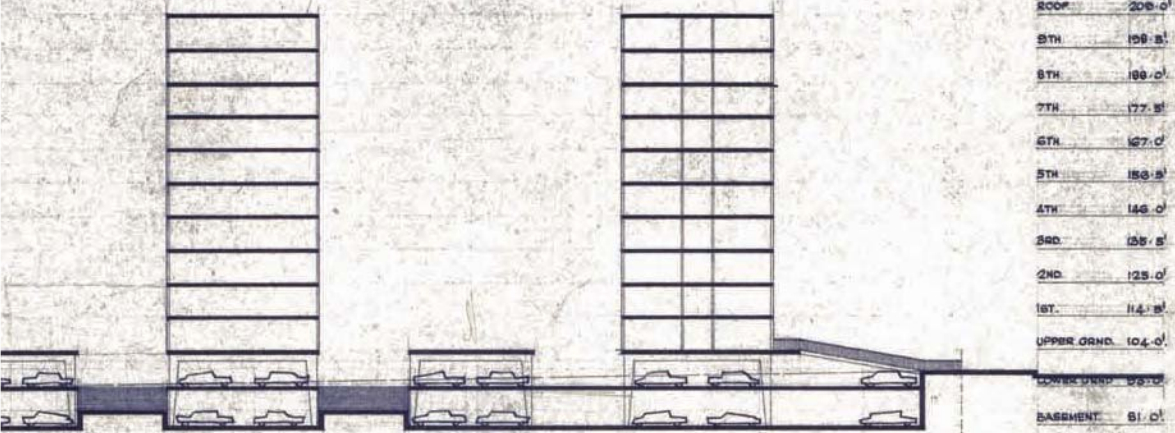
RATES HALL GALLY		T.C.	PUB. GALL	TOWN CLERK.
RATES HALL.	LINK	T.C.	COUN. CHR	TOWN CLERK.
LICENCE HALL.		C.T.		CITY TREASURER
		C.T.	AUDITORS	CITY TREASURER.
		C.T.	ENTRANCE	CITY TREASURER.
		LICENCE		ARCHIVES
		ARCHIVES		
RATES HALL BLOCK.		EAST-WEST BLOCK.		

**DIAGRAMATIC SECTION** SHOWING DEPARTMENTAL

- ROOF 200'
- 6TH 198.5'
- 5TH 188'
- 7TH 177.5'
- 8TH 167'
- 5TH 156.5'
- 4TH 146'
- 3RD 135.5'
- 2ND 125'
- 1ST 114.5'
- UPPER GEND. 104'
- LOWER GEND. 93.5'
- BASEMENT 83.0'



**SECTION A-A**



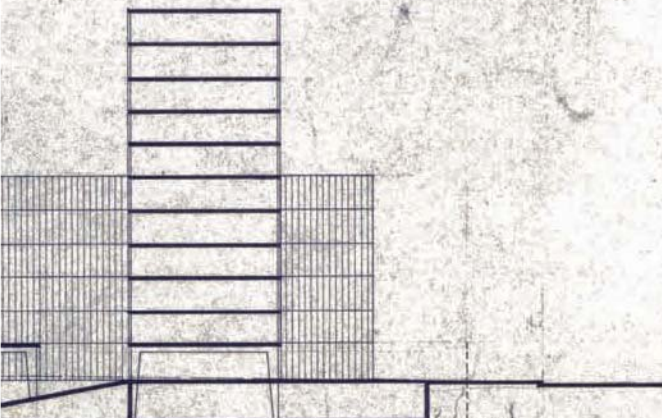
ROOF	206.0'
8TH	198.5'
7TH	186.0'
6TH	167.0'
5TH	156.5'
4TH	146.0'
3RD	135.5'
2ND	125.0'
1ST	114.5'
UPPER GRND.	104.0'
LOWER GRND.	93.5'
BASMENT	81.0'

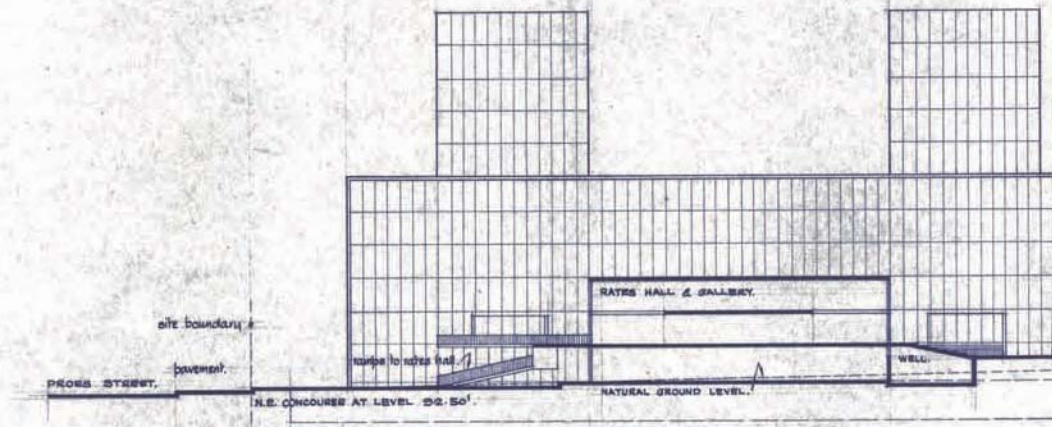
**SECTION B-B**

RESTAURANT	CITY ELECTRICAL ENGINEER.
CITY ELECTRICAL ENGINEER	
CITY ELECTRICAL ENGINEER	CITY ENGINEER.
CITY ENGINEER.	
CITY ENGINEER	
LINK	CITY ENGINEER
	TOWN CLERK
	CITY ENGINEER
LINK	M. O. H.
	M. O. H.
LINK	M. O. H.
	PARKING
LINK	PARKING
	VERMEULEN STREET PAVILION.

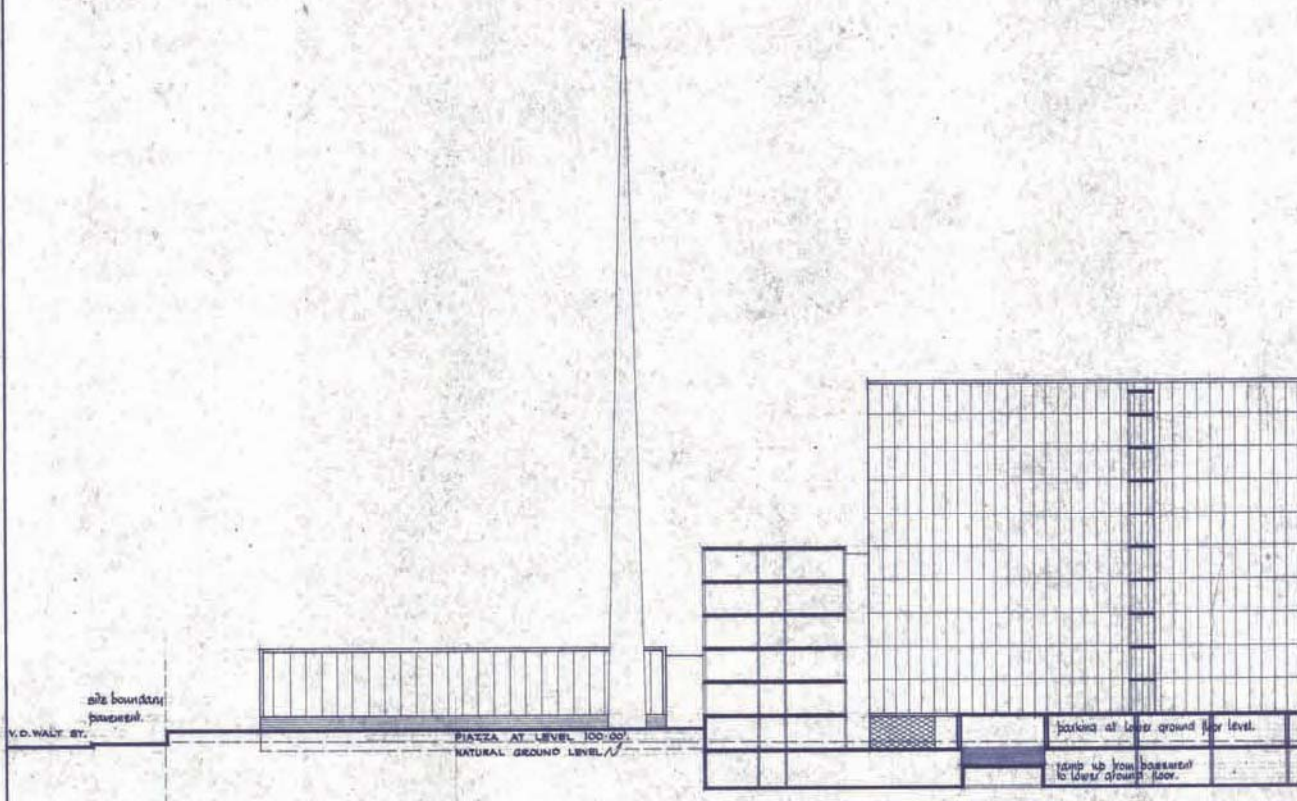
- 8TH FLOOR
- 8TH.
- 7TH
- 6TH.
- 5TH
- 4TH.
- 3RD.
- 2ND.
- 1ST.
- UPPER GRND.
- LOWER GRND.
- BASMENT.

LAYOUT

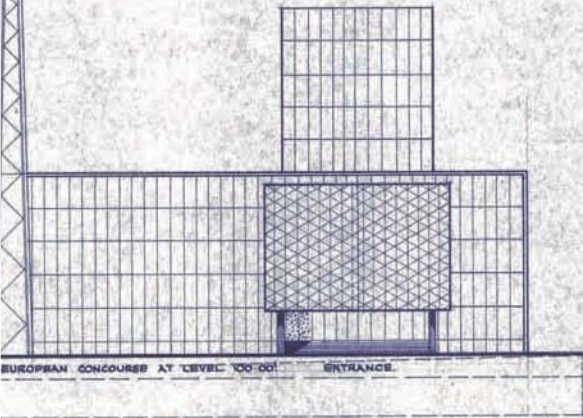




**SECTION D-D.**

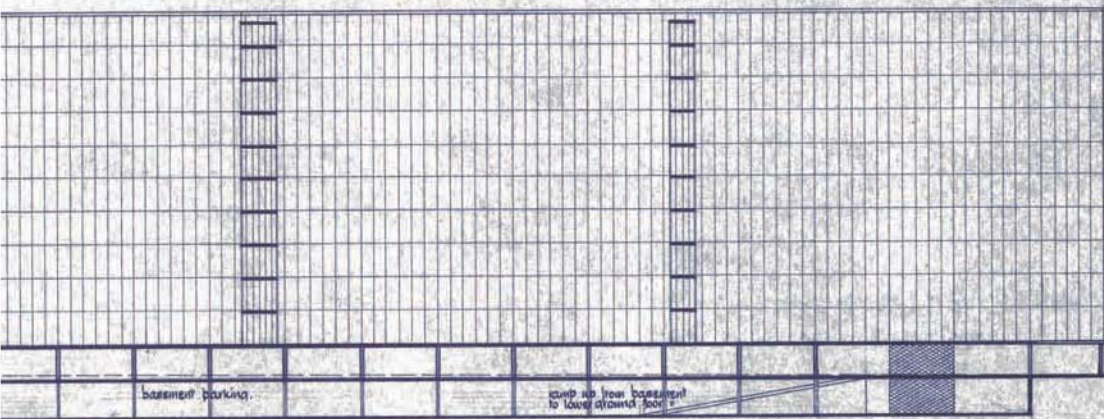


**SECTION CC.**



site boundary  
 ROEWENHUT VERHEULEN ST.

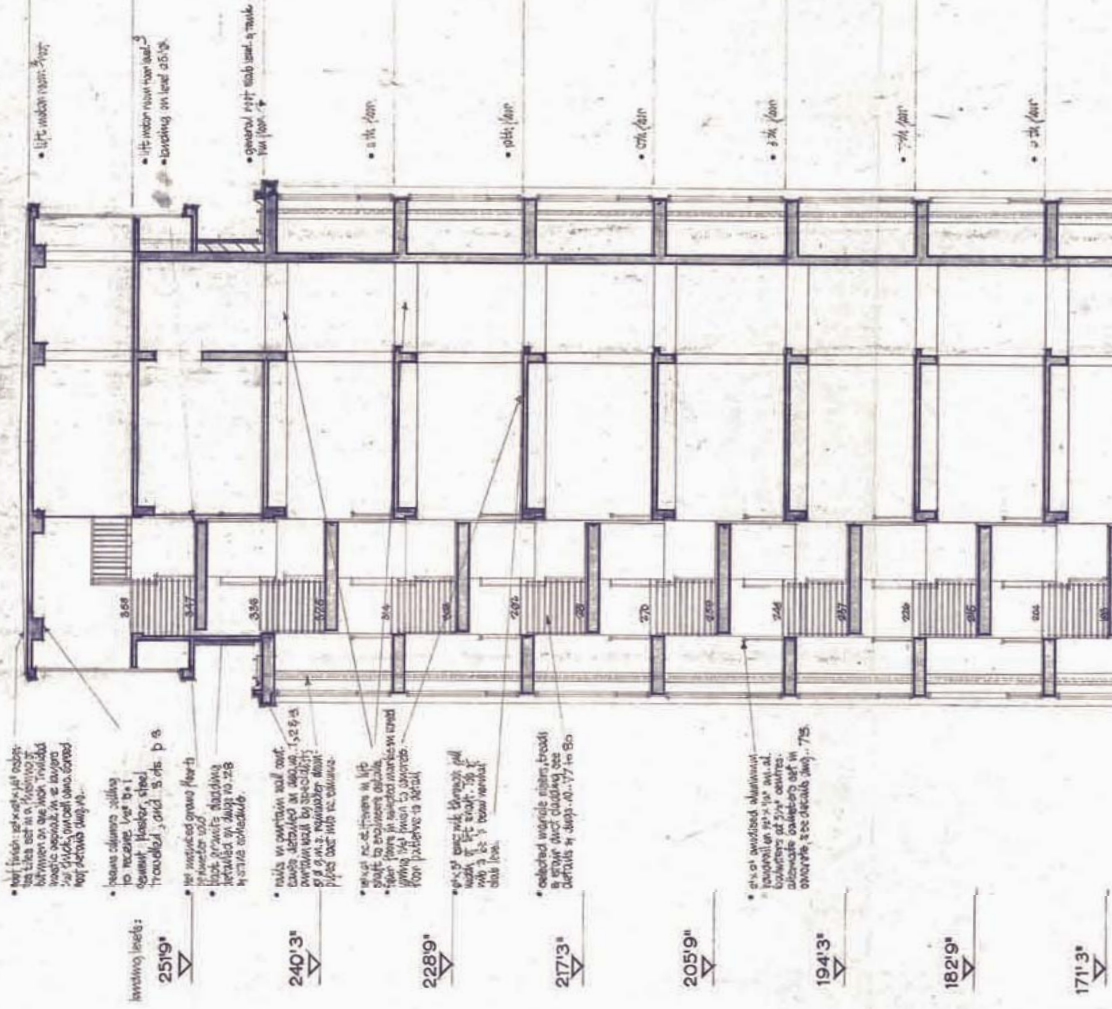
ROOF	208.00'
8TH FLOOR	198.50'
7TH FLOOR	188.00'
6TH FLOOR	177.50'
5TH FLOOR	167.00'
4TH FLOOR	156.50'
3RD FLOOR	146.00'
2ND FLOOR	135.50'
1ST FLOOR	125.00'
UPPER GROUND	104.00'
LOWER GROUND	83.00'
BASEMENT	61.00'



ROOF
8TH FLOOR
7TH FLOOR
6TH FLOOR
5TH FLOOR
4TH FLOOR
3RD FLOOR
2ND FLOOR
1ST FLOOR
UPPER GROUND
LOWER GROUND
BASEMENT



NO.	DATE	REVISION



• 1:10 concrete slab with 100mm reinforcement  
• 1:10 concrete slab with 100mm reinforcement  
• 1:10 concrete slab with 100mm reinforcement  
• 1:10 concrete slab with 100mm reinforcement

• heavy columns sitting on concrete base  
• concrete base, heavy steel reinforcement, grid 13 m. p s  
• 100mm concrete slab with 100mm reinforcement  
• 100mm concrete slab with 100mm reinforcement

• walls in concrete slab roof.  
• walls in concrete slab roof.  
• walls in concrete slab roof.  
• walls in concrete slab roof.

• 100mm concrete slab with 100mm reinforcement  
• 100mm concrete slab with 100mm reinforcement  
• 100mm concrete slab with 100mm reinforcement  
• 100mm concrete slab with 100mm reinforcement

• 100mm concrete slab with 100mm reinforcement  
• 100mm concrete slab with 100mm reinforcement  
• 100mm concrete slab with 100mm reinforcement  
• 100mm concrete slab with 100mm reinforcement

• selected windows, stone heads  
• selected windows, stone heads  
• selected windows, stone heads  
• selected windows, stone heads

• 100mm concrete slab with 100mm reinforcement  
• 100mm concrete slab with 100mm reinforcement  
• 100mm concrete slab with 100mm reinforcement  
• 100mm concrete slab with 100mm reinforcement

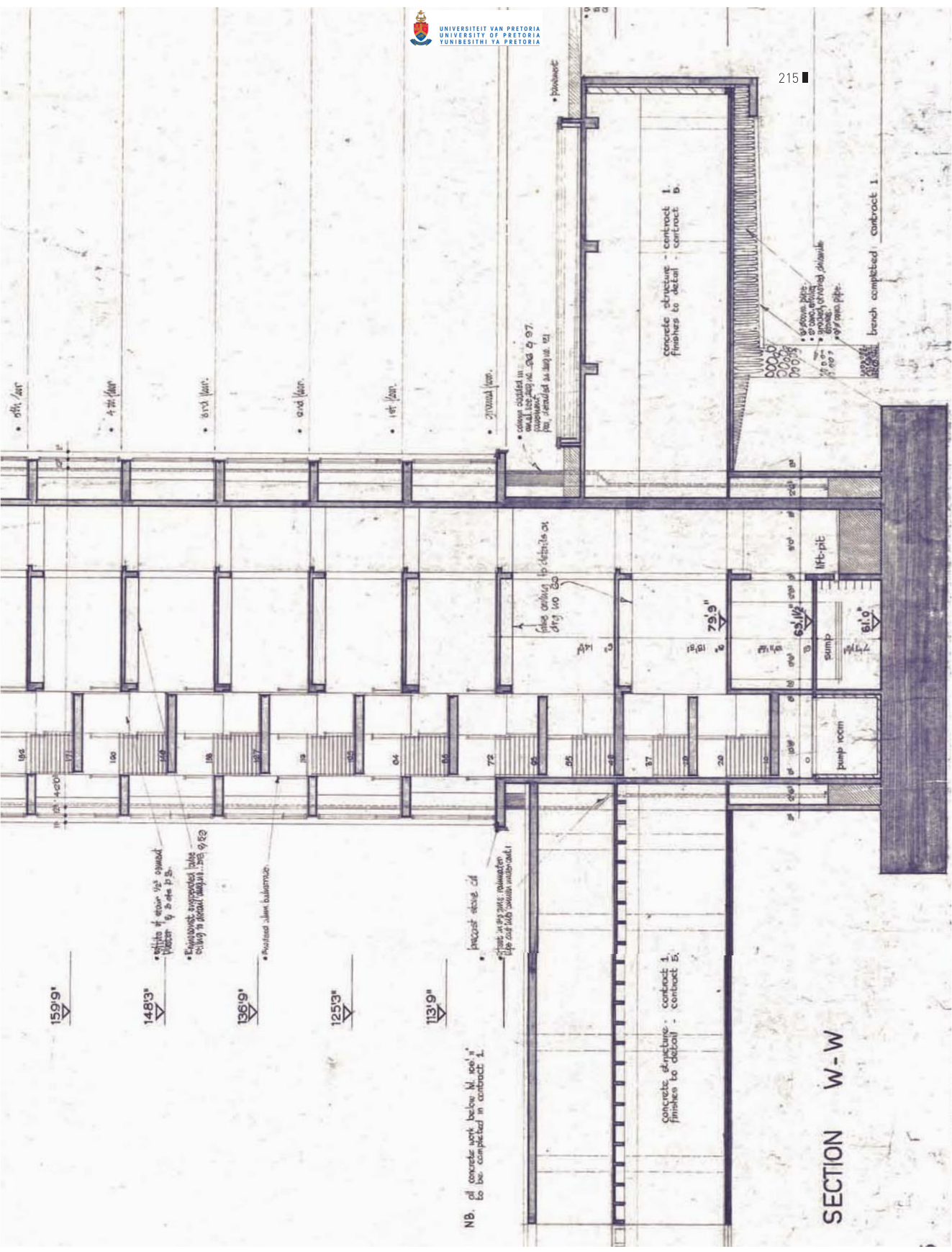
• 100mm concrete slab with 100mm reinforcement  
• 100mm concrete slab with 100mm reinforcement  
• 100mm concrete slab with 100mm reinforcement  
• 100mm concrete slab with 100mm reinforcement

• 100mm concrete slab with 100mm reinforcement  
• 100mm concrete slab with 100mm reinforcement  
• 100mm concrete slab with 100mm reinforcement  
• 100mm concrete slab with 100mm reinforcement

• 100mm concrete slab with 100mm reinforcement  
• 100mm concrete slab with 100mm reinforcement  
• 100mm concrete slab with 100mm reinforcement  
• 100mm concrete slab with 100mm reinforcement

• 100mm concrete slab with 100mm reinforcement  
• 100mm concrete slab with 100mm reinforcement  
• 100mm concrete slab with 100mm reinforcement  
• 100mm concrete slab with 100mm reinforcement

lamina leads:  
2519  
2403  
2289  
2173  
2059  
1943  
1829  
1713



159'9"

148'3"

136'9"

125'3"

113'9"

• finish of floor 1/2' upward  
 (marked 10 3 0 4 7 5)

• Finishes to structural table  
 ceiling in detail (marked 1 5 8 9 5 3)

• Finished alkali ballast

• plaster above of  
 ceiling in detail (marked 1 5 8 9 5 3)

• concrete work below 113'9" to be completed in contract 1.

concrete structure - contract 1  
 finishes to detail - contract 5.

concrete structure - contract 1  
 finishes to detail - contract 5.

SECTION W-W

branch completed - contract 1.

• above slab  
 • above ceiling  
 • structural steel  
 • above  
 • 4" x 4" pipe

• ceiling coated in  
 oil and lacquer  
 per, finished in detail 121



• pipes ceiling in detail 121  
 dfg 140 520

7'9"

6'10"

6'5 1/2"

7'7 1/2"

6'10"

6'5 1/2"

7'7 1/2"

6'10"

6'5 1/2"

7'7 1/2"

6'10"

6'5 1/2"

7'7 1/2"

6'10"

6'5 1/2"

7'7 1/2"

6'10"

6'5 1/2"



**STATEMENT OF SIGNIFICANCE: MUNITORIA (1969)**

Architects: BURG DOHERTY BRYANT & PARTNERS

Design Architect: DOHERTY, Anthony Carden (Tony)

144 Van Der Walt Street, c/o Vermeulen, Erf 3200, Pretoria, City of Tshwane

Munitoria, an L-shaped building comprising of a west and south wing, was completed in 1969, at the time one of the most modern buildings in the city. It became home to the City Council of Pretoria in February of that year. While badly damaged in the devastating fire of March 3, 1997, the building continues to be a landmark in the city today. Not only is it exemplary of the Modern Movement in architecture, it was also designed by one of the sons of Modern Architecture in Pretoria, Anthony Doherty (1930 – 2010). The firm Burg, Lodge & Doherty was renowned for their contribution to the rich inheritance of Modern Architecture in the city: the Administration Building of the SABS, the Pretoria Art Museum and the Reserve Bank Head Quarters to name a few.

Modern architecture is characterized by simplification of form and rational design, where ornament is replaced with the structure of the building. The first variants were conceived early in the 20th century. Modern architecture was adopted by many influential architects and architectural educators, gained popularity after the Second World War, and continued as a dominant international architectural style for institutional and corporate buildings in the 20th century. Many examples, like the Seagram Building in New York (1958) by pioneer Mies van der Rohe (1886 – 1969), are open to public visits today while continuing to be used for the original intended function, becoming living museums and testimony to the architectural layering of the city. Similarly, recognition of the contribution of Modern Architecture to the character of

Pretoria should be a major consideration prior to demolition or alteration of any representative structure.

Described as “Miesian-modernist” by Prof Schalk le Roux (1991:40-41), the nine storey structure of the Munitoria is characterized by stark functionality with much emphasis on glazed envelope and vertical articulation – typical of the Modern Movement. The Munitoria building was also one of the first ambitious interventions in the planning of the “new” Pretoria whereby commercial arteries of the city was traversed. According to Le Roux (1991: 41), the significance of the building lies in its prominent location and function.

### Conclusion

In short, the Munitoria is significant for

1. Its contribution to the architectural heritage of the **Modern Movement** of the city
2. Being designed by a **prominent local architect** of the 20<sup>th</sup> century
3. And has been a **prominent landmark** in the collective frame of reference in the city.

Therefore, any alteration or intervention to the structure should be carefully considered *in lieu* of the above statement of significance.

### References include, but are not limited to:

- Botes, N, Le Roux, S (eds). 1991. Plekke en Geboue van Pretoria. Volume Twee. Pretoria: Stadsraad van Pretoria
- Fisher, R.C., Le Roux, S., Maré, E. (eds.) Architecture of the Transvaal. 1998. Pretoria: UNISA
- Ford, Edward R. 2003. The Details of Modern Architecture. Volume 2: 1928 – 1988. MIT Press.
- Leitch, J. (ed). 1997. “Opportunity from Disaster: The ‘great’ Munitoria fire”. *Special Publication by the City Council*. Bedfordview: Brooke Patrick (Pty) Ltd.