



UNIVERSITEIT VAN PRETORIA  
UNIVERSITY OF PRETORIA  
YUNIBESITHI YA PRETORIA

**T . I . R . F**

TUHS INTERACTIONAL RESEARCH FACILITY

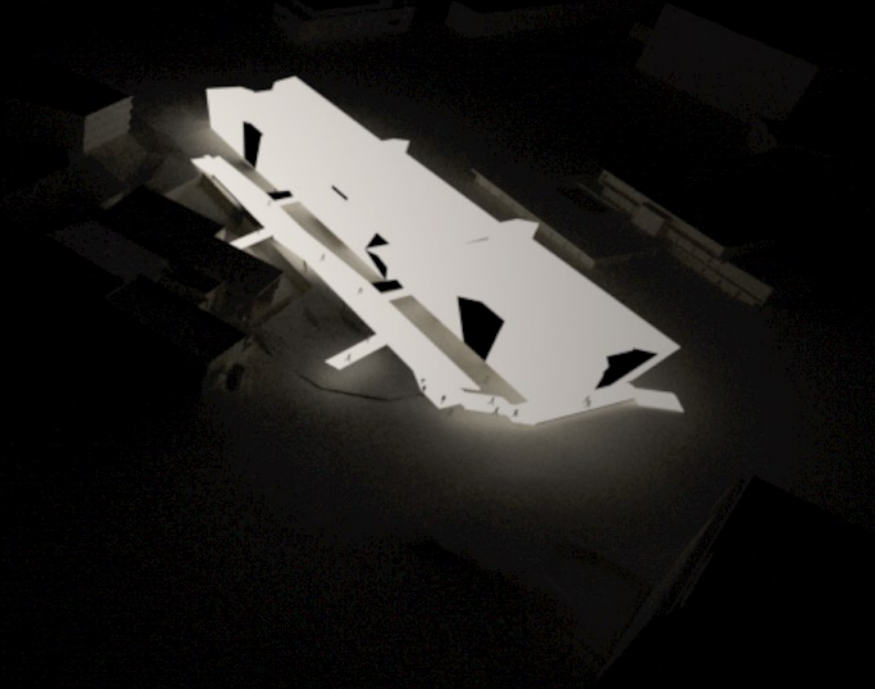
## Tuks Interactional Research Facility (T.I.R.F)

*Growing a university and nations research capacity*

W.J.Naude 21012832

Study Leader : R. van Rensburg

Submitted in fulfilment of part of the requirements for the degree Magister in Architecture ( Professional) in the faculty of Engineering, Built Environment and Information Technology, University of Pretoria, South Africa



Thank You To:

My wonderful wife Carina, for all her love, patience, support and understanding.

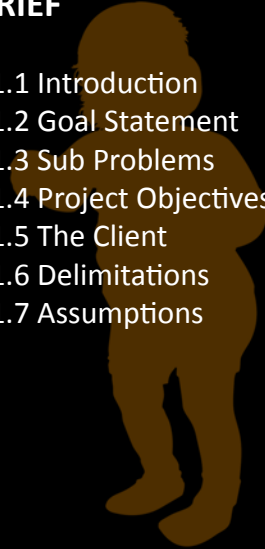
My Parents Johan and Linda, for always being there

My study leader Rudolph van Rensburg

Arthur , Jacque and Edward.

## +1 BRIEF

3	1.1 Introduction
4	1.2 Goal Statement
5	1.3 Sub Problems
5	1.4 Project Objectives
7	1.5 The Client
7	1.6 Delimitations
8	1.7 Assumptions



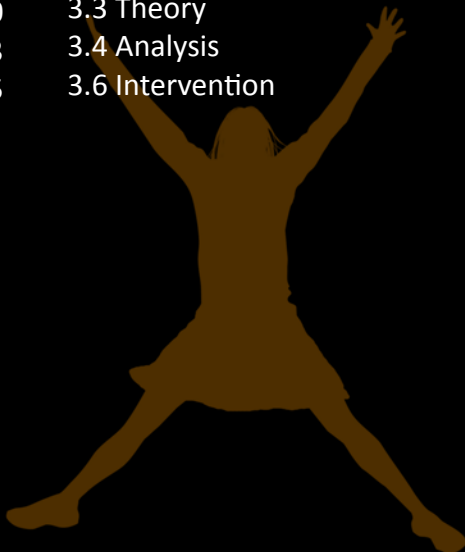
## +2 CONTEXT

11	2.1 Study Area
13	2.2 Historic Campus Development
17	2.3 Site Selection
21	2.4 Site Analysis
31	2.5 Research Context



## +3 URBAN DESIGN

37	3.1 Introduction
38	3.2 Vision
40	3.3 Theory
43	3.4 Analysis
45	3.6 Intervention



## +4 THEORETICAL INVESTIGATION

55	4.1 Introduction
56	4.2 Historic Context
58	4.3 Surface in the Public Realm
59	4.4 Surface Appearance
59	4.5 Exploring Surface
60	4.6 Deep Surface





## +5 PRECEDENT STUDIES

- 63 5.1 Laboratory Precedents
- 69 5.2 Surface Precedents



## +6 DESIGN INVESTIGATION

- 79 6.1 Introduction
- 81 6.2 Surface
- 95 6.3 Form
- 102 6.4 Intervention



## +7 TECHNICAL INVESTIGATION

- 137 7.1 Introduction
- 137 7.2 Structure
- 145 7.3 Planning
- 149 7.4 Climate Control
- 157 7.5 Storm Water
- 158 7.6 Materials
- 162 7.7 Services Design
- 163 7.8 Codes and Standards
- 163 7.9 Sustainable Parameters



## +8 APPENDICES

- 167 8.1 Urban Analysis
- 169 8.2 List of Figures
- 175 8.3 References

