

Bibliography

BIBLIOGRAPHY

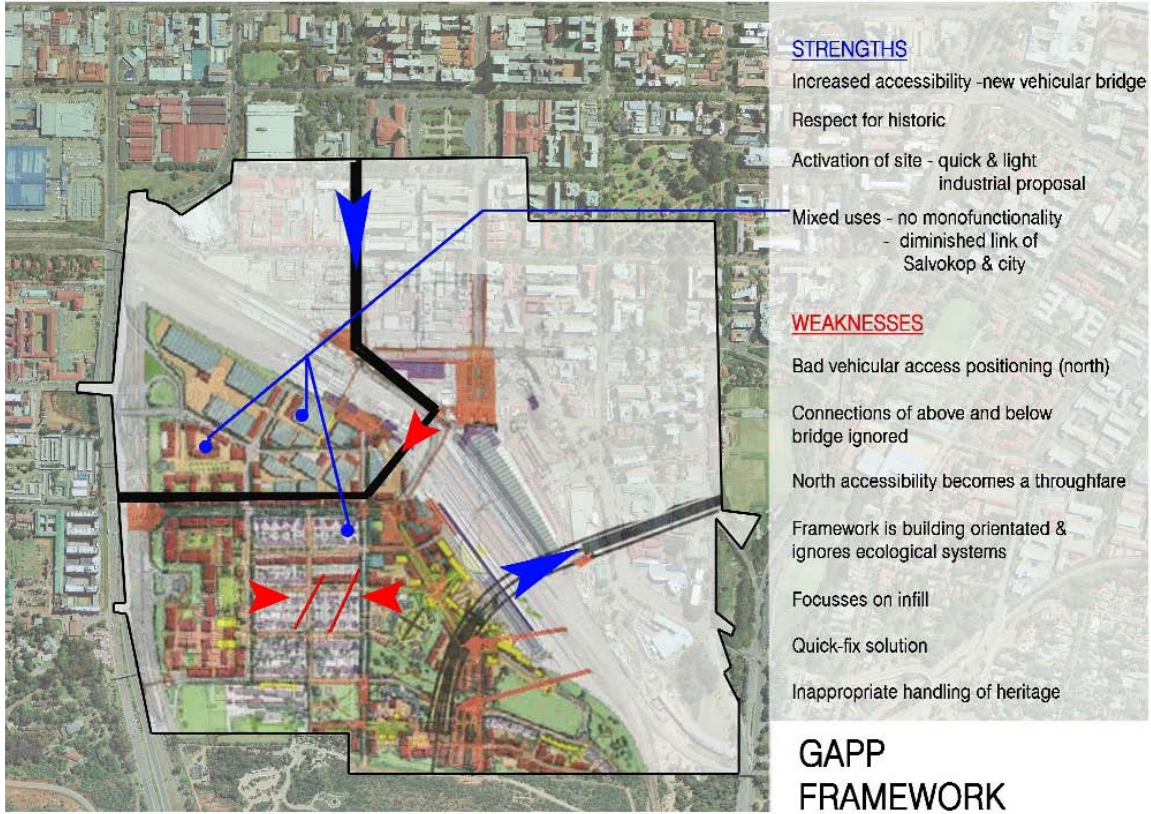
- ARCHILAB ARCHITECTS. S.a. Trade: Cape Quarter. Internet: http://www.archilab.co.za/pages/trade/projects_trade_capequarter.html (Accessed 6 June 2011)
- ASTRUP, R. 2005. Pretoria station precinct and community development centre. Pretoria: University of Pretoria. Unpublished.
- AUSTRALIA. 1999. The Burra Charter, The Australia ICOMOS Charter for Places of Cultural Significance. Australia. Internet: www.nationaltrust.com.au/burracharter.html (Accessed: 12 April 2011).
- BAKKER, K.A. 2002. Digital Folder of Salvokop photographs, history and current documentation. Unpublished.
- CANTH, J. 2011. Review for Laputa: Castle in The Sky – Double Play: The Studio Ghibli Collection. 29 April 2011. Internet: http://www.myreviewer.com/Laputa_Castle_In_The_Sky_-_Double_Play_The_Studio_Ghibli_Collection_Blu-ray_Review/a141736/page2 (Accessed 10 June 2011)
- CAPE QUARTER. [2009]. Cape Quarter History. Internet: <http://www.capequarter.co.za/history.php> (Accessed: 6 June 2011)
- CRAIG-MARTIN, M. 2000. *Towards Tate Modern*. 12 - 23. In Blazwick, I and Wilson, S. 2000. Tate Modern the handbook. London: Tate Gallery Publishing.
- COHN, D. 2006. *Rehabilitation of Santa Caterina Market, Barcelona, Spain*. Architectural Record; February 2006. Vol. 194 Issue 2, p. 98 – 105.
- DE WILD, F. 2008. *On a Mission*. Frame Magazine. Nov/Dec 2008. Issue 65, p. 178 - 181.
- DE WILD2, F. 2008. *Mi Kasa, Su Kasa*. Frame Magazine. Sept/ Oct 2008. Issue 64, p.53.
- DI MONTE, G, GLOEK, K.R., KHAN, Z and TEESEN, M (Salvokop Group). 2011. Framework Analysis and Images. Unpublished.
- DI MONTE, G. EXAMINATION PHOTOGRAPHS. 2011. Unpublished.
- EVAC+CHAIR, 2004. EVAC+CHAIR. Internet: www.evac-chair.co.za (Accessed 11 October 2011)
- DAN'S UPHOLSTERY, S.A. Dan's Upholstery. Internet: <http://www.dansupholstery.com/FabricsNew.html> (Accessed 11 October 2011)
- DOUGLAS, M. 1996. Thought Styles: critical essays on good taste. London: SAGE Publications.
- FEILDEN, B.M. 1994. Conservation of Historical Architecture. Oxford: Butterworth Heinemann.

- FLOORING DEPOT, S.A. Bamboo Engineered Floors. Internet: http://www.flooringdepot.co.za/index.php/Bamboo-/Bamboo-Suede/flypage_new_measure.html (Accessed 27 September 2011)
- FLOORWORX, S.A. Sheet Vinyl Product. Internet: http://www.floorworx.co.za/product.php?action=show_prod&id=8&cat=93 (Accessed 26 September, 2011)
- FREEDOM PARK. S.a. Freedom Park. Internet: www.freedompark.co.za (Accessed: 10 October 2010)
- GLASSTILE, S.A. Glass Mosaic Tiles. Internet: <http://glasstile.co.za/products/colours/> (Accessed 26 September 2011)
- GOOGLE EARTH, 2011. Aerial Photograph, Salvokop, Pretoria.
- GROAT, G. and Wang, D. 2002. Architectural Research Methods. New York: John Wiley and Sons.
- HUDLER, C. 2010. These are movies you don't have to like. 21 January 2010. Internet: http://blog.colinhudler.com/?attachment_id=189 (Accessed 11 June 2011)
- IHEARTGUM, 2009. MoMA Subway Art. Internet: <http://iheartgum.blogspot.com/2009/02/moma-subway-art.html> (Accessed 28 September 2011)
- KIMME, T. 2008. *Imagine life on the other side of the planet*. Frame Magazine. Sept/ Oct 2008. Issue 64, p.53.
- KÖNIGK, R. 2010. Interior design as architecture's 'Other'. Pretoria: University of Pretoria. Unpublished.
- MARY, S. 2010. Textiles. 10 June 2010. Internet: <http://cappuccino-girl.blogspot.com/2010/06/textiles.html> (Accessed 11 October 2011)
- MODE DE MUNDO, 2010. South Africa - The Rainbow Nation. 18 September 2010. Internet: <http://modedemundo.blogspot.com/> (Accessed 12 October 2011)
- NEUFERT, E and Neufert, P. 1999. Architects' Data Third Edition. Oxford: Blackwell Publishing.
- PELICANA, S.A. Mineral Fibre Tiles. Internet: <http://www.pelican.co.za/ceilings/amf+mineral+fibre+tiles/default.aspx> (Accessed 28 September 2011)
- PELICAN B, S.A. OWAcooustic Tiles. Internet: <http://www.pelican.co.za/ceilings/owacooustic+mineral+fibre+tiles/default.aspx> (Accessed 28 September 2011)
- PELICAN C, S.A. Vinyl Clad Tiles. Internet: <http://www.pelican.co.za/ceilings/vinyl+clad+ceiling+systems/default.aspx> (Accessed 28 September 2011)
- PEOPLE'S UPLIFTMENT PROGRAMME (POPUP). S.a. Skills Training. Internet: http://www.popup.co.za/pop_info.php?id=11 (Accessed: 23 October 2010)

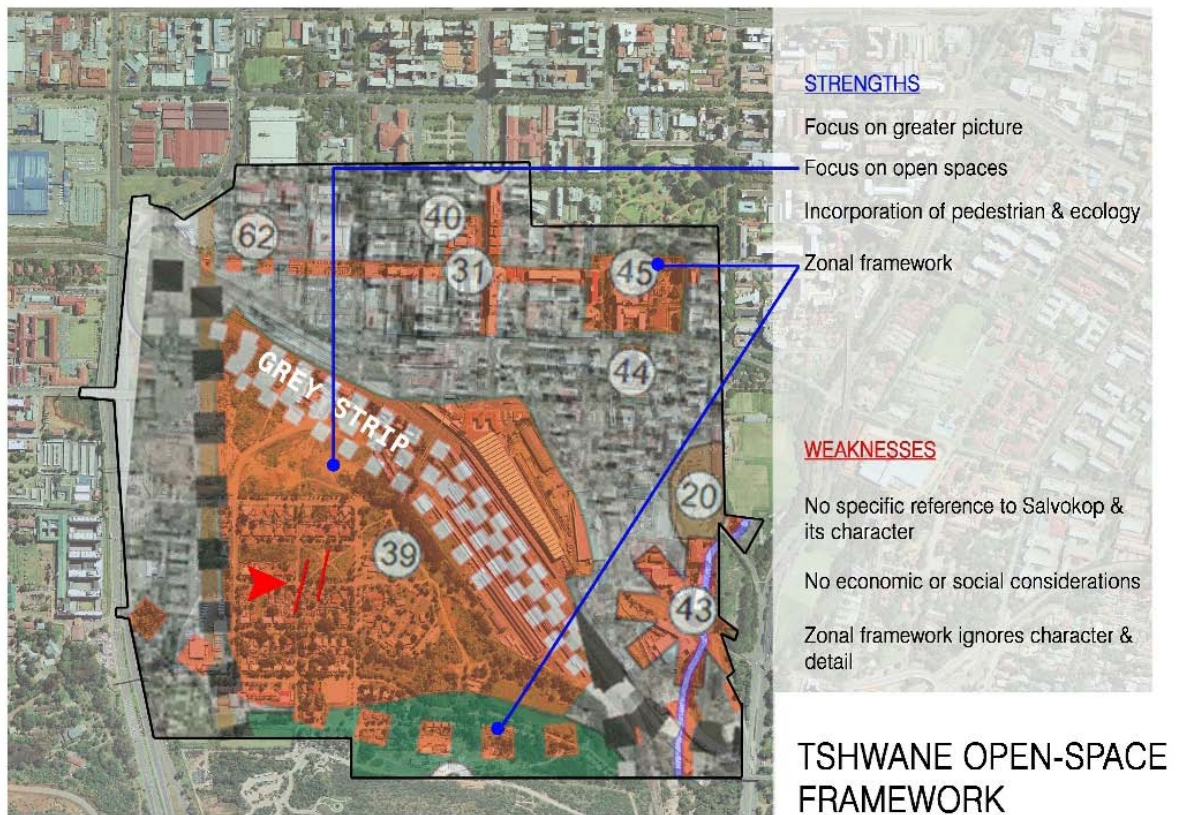
- PEORIA, S.a. Explore Peoria. Internet: <http://www.explorepeoria.com/pages/peoriahistory> (Accessed 11 April 2011).
- PERRIN, J. 2002. Tate Modern. Internet: <http://www.galinsky.com/buildings/tatemodern/tateext.jpg> (Accessed 28 September 2011)
- PERSPEX, S.A. Technical Data. Internet: <http://www.perspex.co.za/Technical.aspx> (Accessed 27 September 2011)
- PG BISON B, S.A. Supawood Panels. Internet: <http://www.pgbison.co.za/panel-products/supawood.html> (Accessed 27 September 2011)
- RADIANT, S.A. Radiant Light Fittings. Internet: www.radiant.co.za (Accessed 1 October 2011)
- RICK MATHER ARCHITECTS, 2009. Barking Skills Centre. Internet: http://www.rickmather.com/project/category/barking_skills_centre#/project/category/barking_skills_centre (Accessed 10 June 2011)
- PG BISON A, S.A. Formica Solid Core. Internet: <http://www.pgbison.co.za/decorative-products/formica-solidcore.html> (Accessed 26 September, 2011)
- SAINT GOBAIN WEBER, S.A. Insulated Facade Panels. Internet: <http://www.sg-weber.de/fassade-wand/erfolgreich-planen/detailzeichnungen.html> (Accessed 26 September 2011)
- SCHAUFFER, A. 2011. *The Workhouse*. Property KwaZulu-Natal. February 2011. Issue 218, p. 25 – 26.
- SCOTT, F. 2008. On Altering Architecture. New York: Routledge.
- SMITH, R. 2006. *Tate Modern's Rightness versus MoMA's wrongs*. The New York Times. 1 November 2006. Internet: <http://www.nytimes.com/2006/11/01/arts/design/01tate.html> (Accessed 28 September 2011)
- SOUTH AFRICA. 1999. National Heritage Resources Act. Cape Town: Department of Arts and Culture. s.a. Internet: www.dac.gov.za/acts/NHRAct1999.pdf (Accessed 8 April 2011).
- SOUTH AFRICAN COUNCIL OF ARCHITECTURAL PROFESSION (SACAP). 2010. Schedule 1: Demarcation of Architectural Work Matrix. Internet: http://www.sacapsa.com/sacap/action/media/downloadFile?media_fileid=299 (Accessed: 10 October 2010)
- TAKAHASHI, M. 2008. *History in MDF*. Frame Magazine. Nov/Dec 2008. Issue 65, p. 59.
- VENKATESH, A. and MEAMBER, L.A. *Arts and aesthetics: marketing and cultural production*. Marketing Theory. March 2006. Vol. 6, Issue 1, p.11 - 39. Internet: <http://0-mtq.sagepub.com.innopac.up.ac.za/content/6/1/11.full.pdf+html> (Accessed 5 March 2011).
- WILLIS, J. 2009. LibriVox: Twenty Thousand Leagues Under The Sea by Jules Verne. 20 November 2009. Internet: <http://jules-verne-image.co.cc/category/jules-verne-steampunk> (Accessed: 9 June 2011)



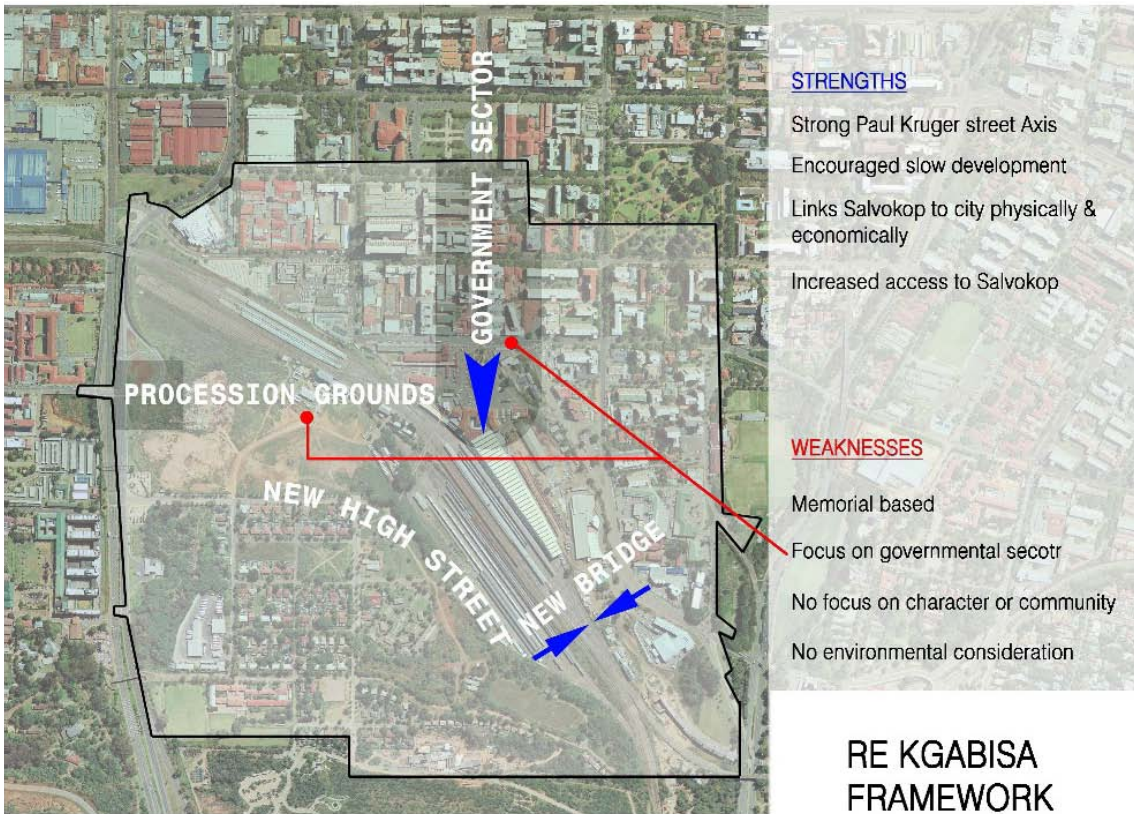
Appendices



Illus 9.1 Analysis of existing GAPP Framework (Salvokop Group, 2011)

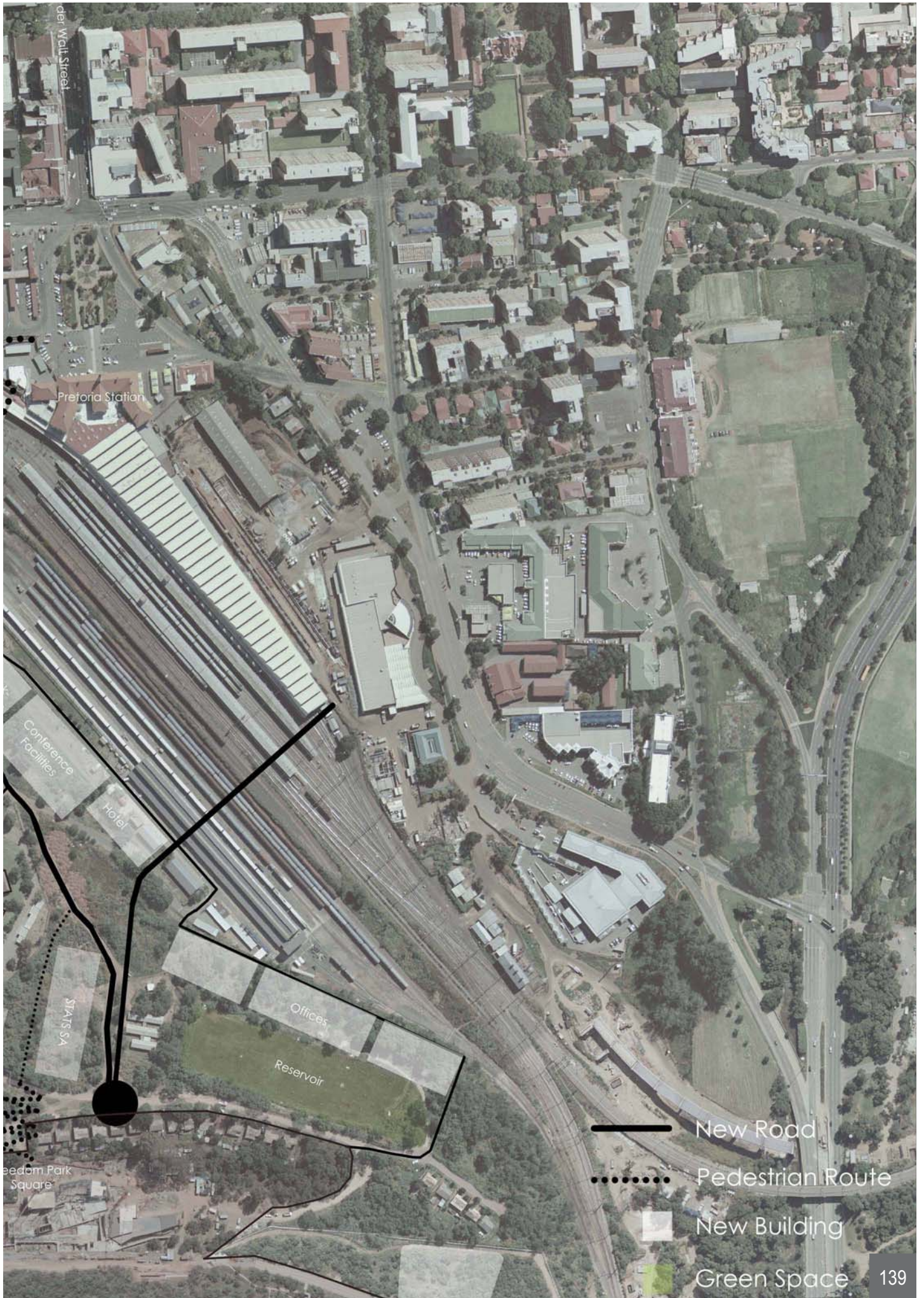


Illus 9.2 Analysis of existing Tshwane Open Space Framework (TSOP) (Salvokop Group, 2011)



Illus 9.3 Analysis of existing Re Kgabisa Framework (Salvokop Group, 2011)



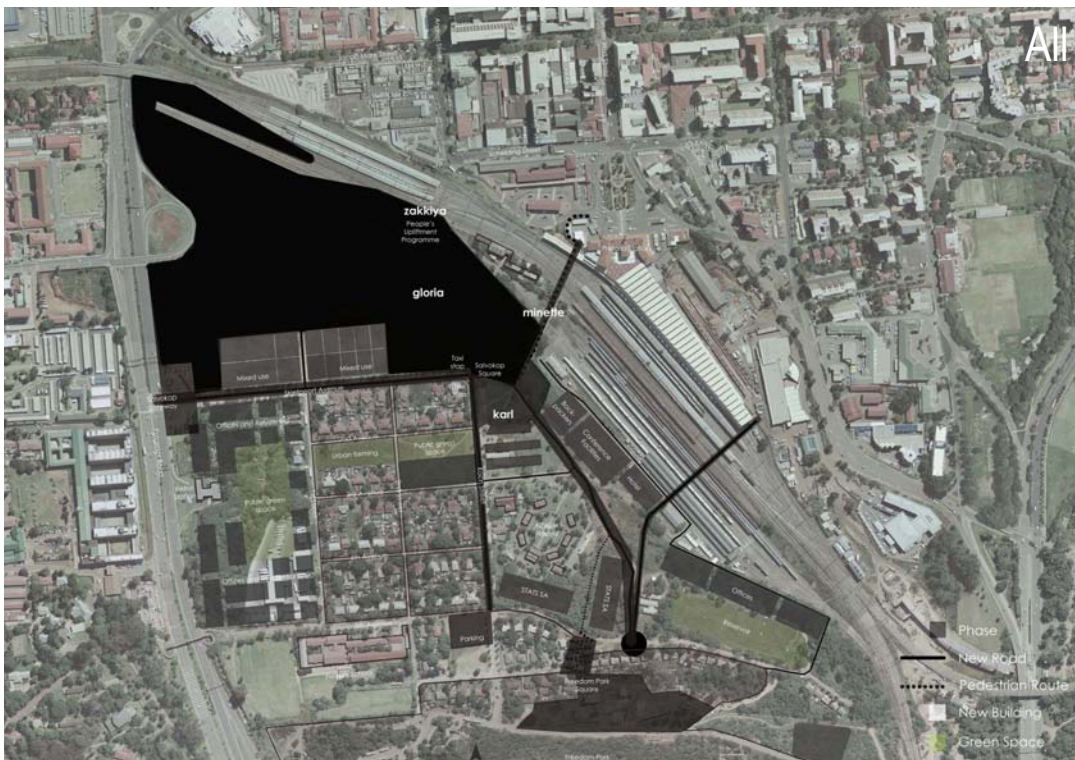


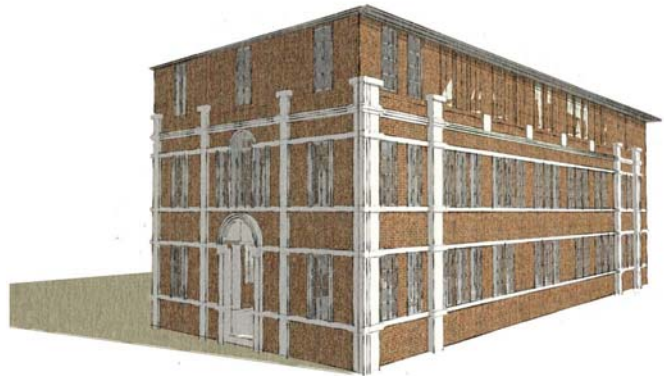




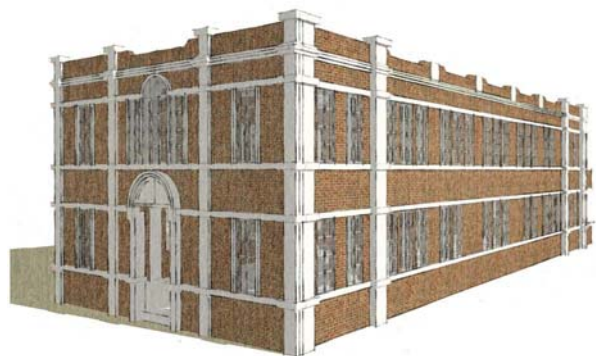


Illus 9.6 Phases 1 - 3 & All Phases Overlay (Salvokop Group, 2011)

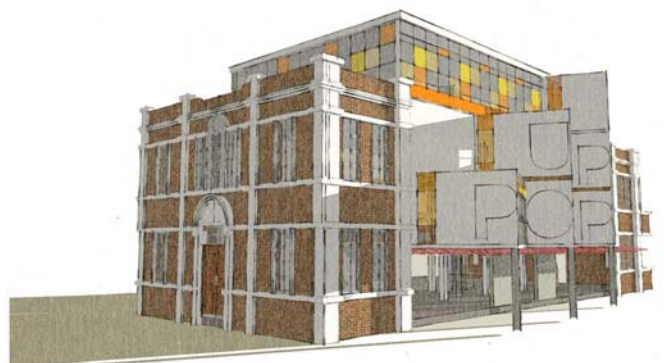




Illus 9.7 Current Condition (Author, 2011)



Illus 9.8 "Historical Ideal" - 1909 CEO (Author, 2011)



Illus 9.9 2011 POPUP (Author, 2011)



Illus 9.10 Entrance Hall (Author, 2011)



Illus 9.11 Food LAB Meeting Area / Banquet Space (Author, 2011)



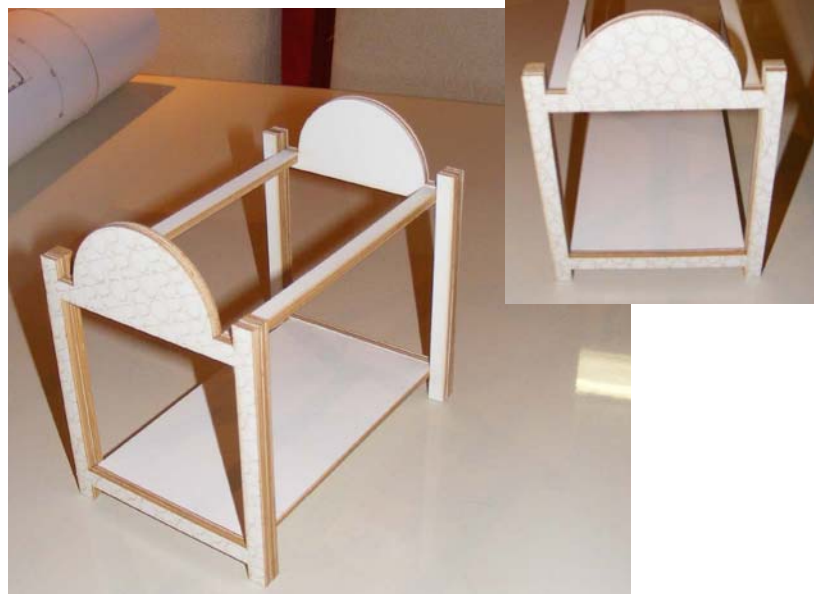
Illus 9.12 Atrium and Mezzanine Spaces (Author, 2011)



Illus 9.13 The Author before design examination (Di Monte, 2011)



Illus 9.14 Sectional Structural Model (Author, 2011)



Illus 9.15 Detail 3.1 Model (Author, 2011)



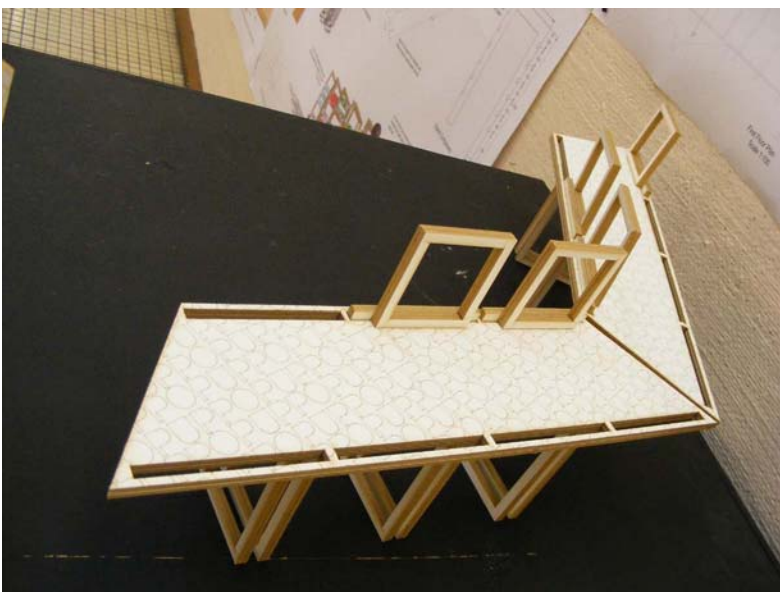
Illus 9.19 Examination Presentation (Author, 2011)



Illus 9.20 Examination Presentation (Author, 2011)



Illus 9.16 The Author presenting the design project to the examination panel (Di Monte, 2011)



Illus 9.17 Detail 5 Model (Author, 2011)



Illus 9.18 Detail 6 Model (Author, 2011)



Illus 9.21 Design Model, Entrance View (Author, 2011)



Illus 9.22 Design Model, South Facade (Author, 2011)



Illus 9.23 Design Model, North Facade and Promenade (Author, 2011)



Illus 9.24 Design Models with presentation behind (Di Monte, 2011)



Illus 9.25 Design Model, Railway Promenade (Author, 2011)



Illus 9.26 Design Model (Author, 2011)