

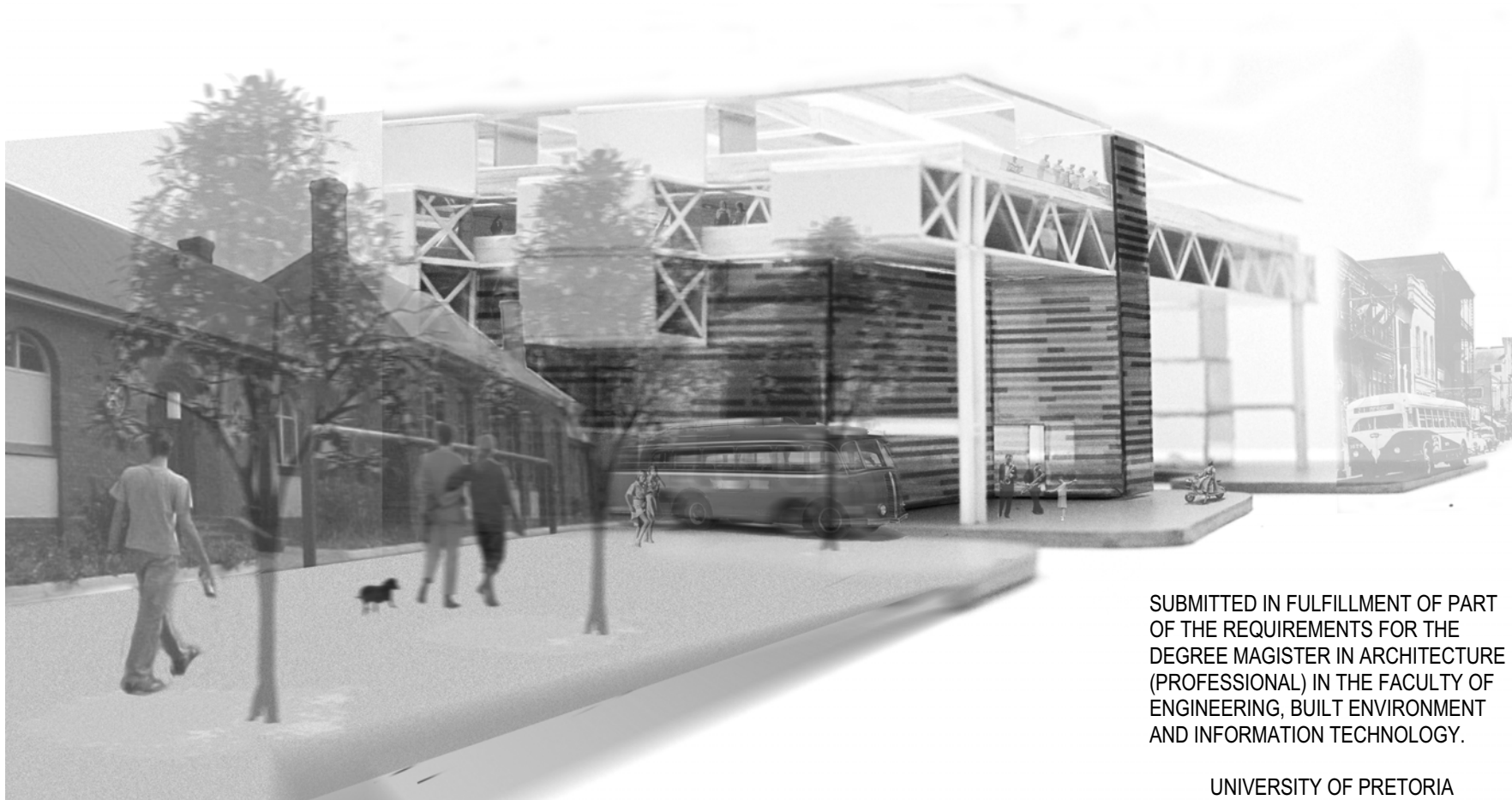
University of Pretoria, etd - Van der Westhuizen, A L (2003)

AN URBAN CENTRE FOR TEMPORARY WORKERS

In Hatfield, Pretoria by **Andries Lourens van der Westhuizen**

Mentor: Rudolf van Rensburg

Study leader: Finzi Saidi



SUBMITTED IN FULFILLMENT OF PART
OF THE REQUIREMENTS FOR THE
DEGREE MAGISTER IN ARCHITECTURE
(PROFESSIONAL) IN THE FACULTY OF
ENGINEERING, BUILT ENVIRONMENT
AND INFORMATION TECHNOLOGY.

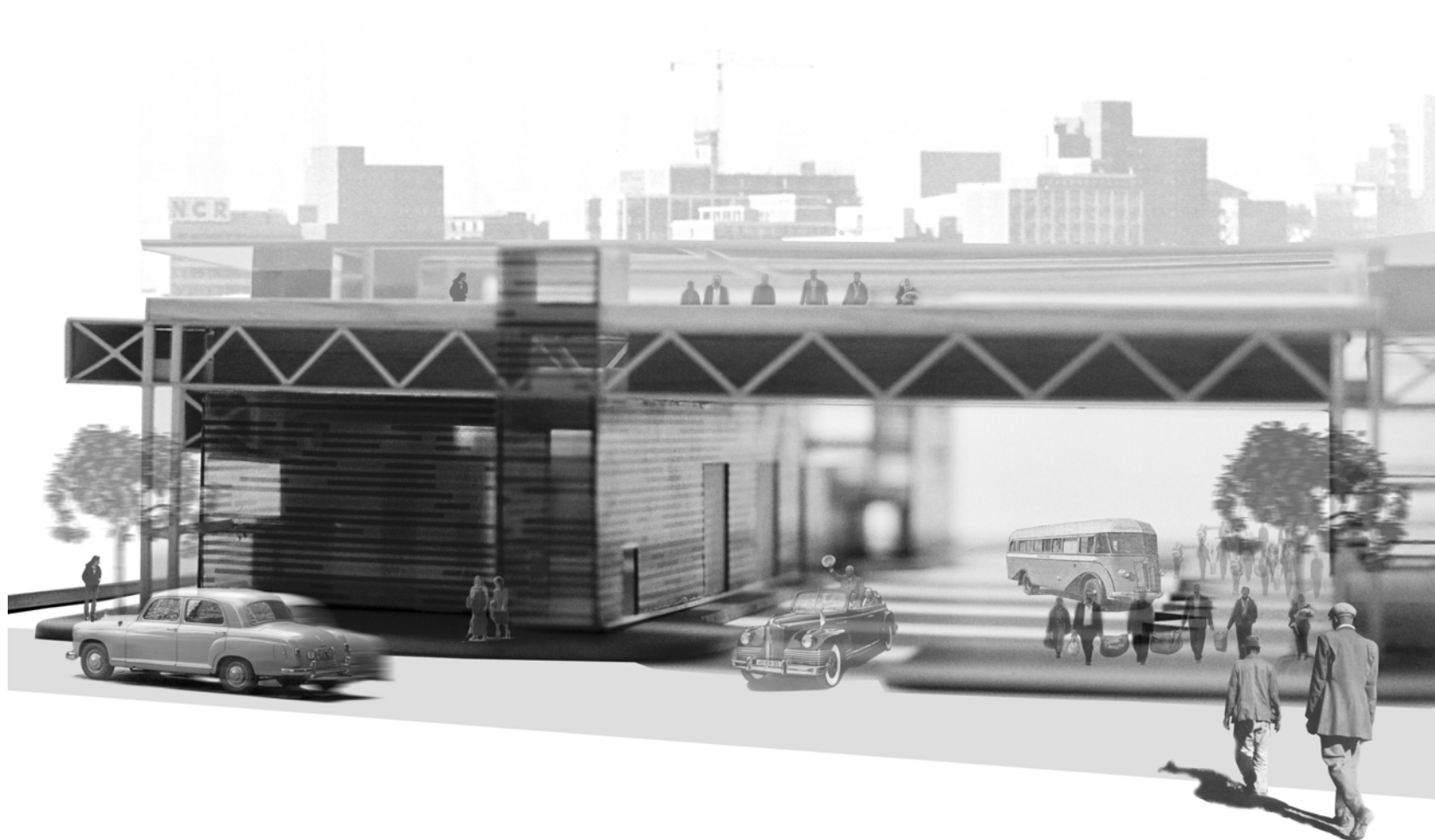
UNIVERSITY OF PRETORIA
DEPARTMENT OF ARCHITECTURE

NOVEMBER 2003

**Aan
My Ouers**

*If I had not known that my life depends
on my mind and my effort ... if I had not
made it my highest moral purpose to
exercise the best of my effort and the
fullest capacity of my mind in order to
expand my life...*

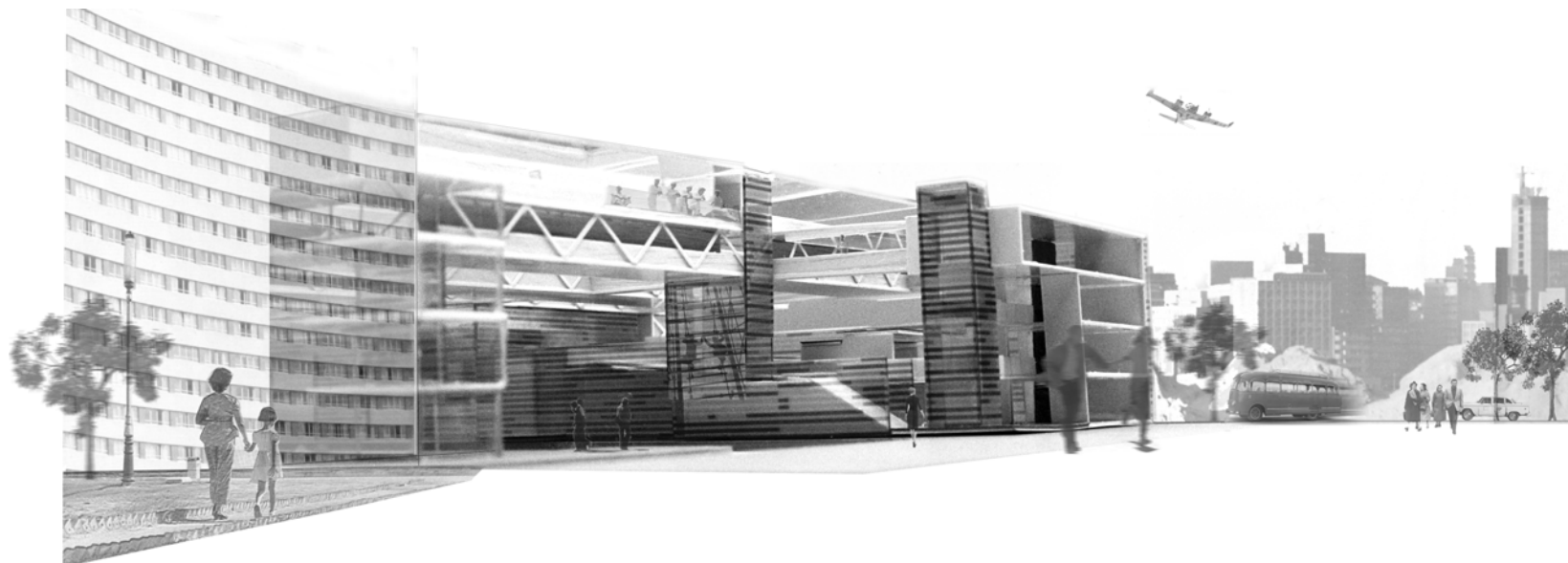
Ayn Rand, *Atlas Shrugged*, 1957



Prologue

This thesis elaborates on the relationship between work and time and how it relates to quality architecture. Quality is a degree of excellence.

The project proposed is aimed at promoting quality in the built environment through workmanship.



ii **Opsomming**

Pretoria, in die Tswane Metropolitaanse area, is geleë in Gauteng, die provinsie waar die meeste handel in Suid-Afrika plaasvind. Hatfield, 'n voorstad in Pretoria, is die tuiste van baie studente aan 'n wye verskeidenheid

akademiese inrigtings, insluitende die Universiteit van Pretoria. Baie werkers pendel tussen Pretoria en Johannesburg op 'n daaglikse basis.

Die wêreld word vandag gekenmerk deur ewigdurende veranderinge, wat veral in Suid-Afrika tot onsekerheid lei, gepaardgaande met skommeling in die ekonomie.

Die werkloosheidskoers van ongeveer 40% noodsaak dat

baie Suid -Afrikaners tydelike, en selfs migreerende arbeiders word.

Hierdie onsekerheid word ook weerspieël in die boubedryf, waar geboue "tydelike" eienskappe toon, en waar vakmanskap in die beplanning en konstruksie daarvan ontbreek.

Die projek wat in hierdie tesis bespreek word, is die gevolg van intensiewe beplanning rondom die voorgestelde Hatfield Gautrans Stasie, deur E.B Roccon (tesis vir MArch(Prof), 2003), wat geïmplimiteer word om 'n effektiewe openbare vervoeraansluiting tussen Pretoria en Johannesburg te bewerkstellig.

'N STEDELIKE SENTRUM VIR TYDELIKE WERKERS

In Hatfield, Pretoria deur **Andries Lourens van der Westhuizen**

Mentor: Rudolf van Rensburg

Study leader: Finzi Saidi

Degree: MArch(Prof)

Summary

Pretoria, in the Tswane Metropolitan area, is in Gauteng, the province responsible for most trade in South Africa. Hatfield in Pretoria is home to many students of various institutions, including the University of Pretoria. Many workers live in Pretoria and commutes daily between Pretoria and Johannesburg.

The world is characterized by ever-changing aspects today, and especially in South Africa uncertainty prevails. Fluctuations in the economy have resulted in a feeling of insecurity. An unemployment rate of approximately 40% has

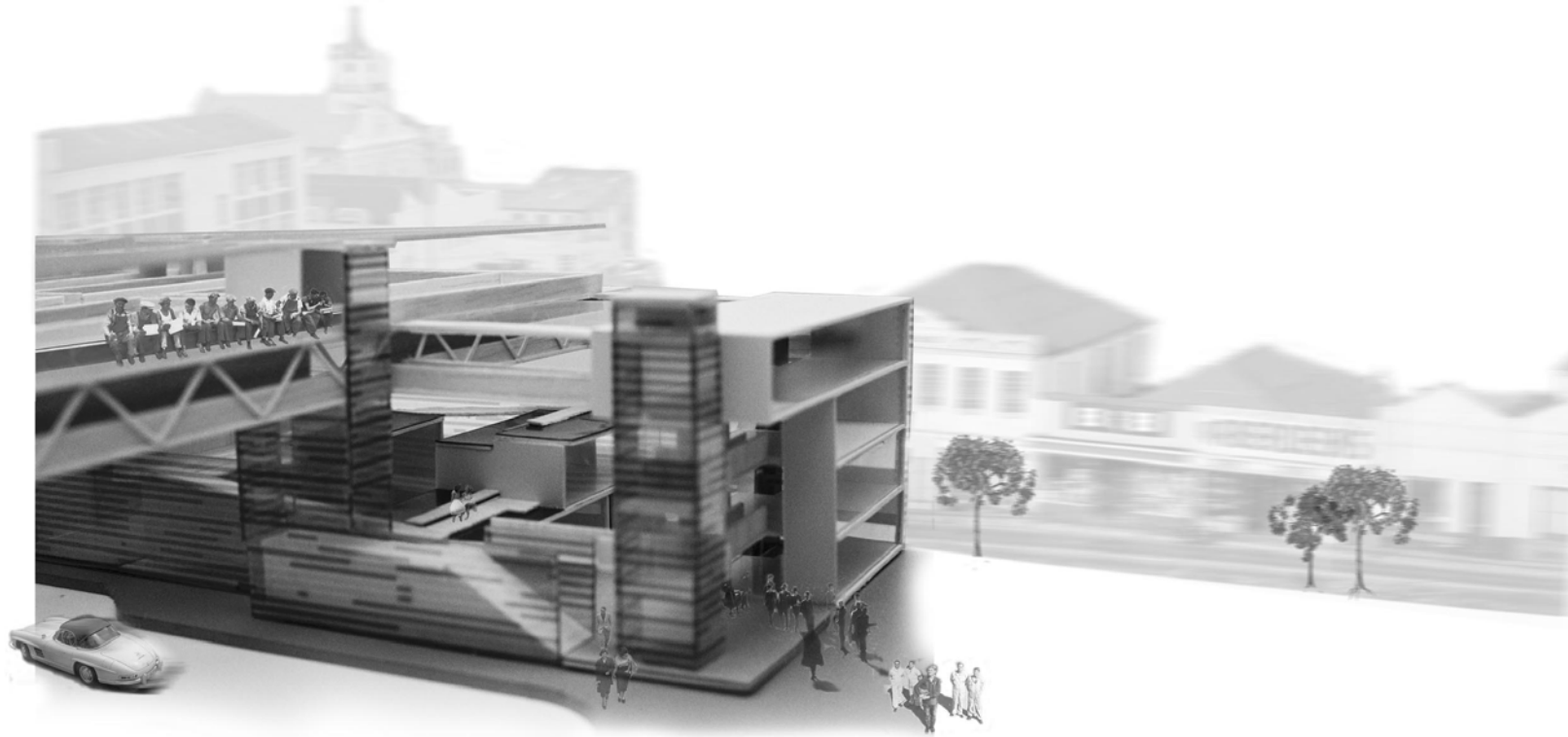
caused many South Africans to become temporary, and often migrant, workers.

This uncertainty also reflects in the built environment, where buildings have become "temporary", displaying a lack of workmanship in the planning and construction.

The project discussed in this thesis is a result of intensive planning on the site, in collaboration with the proposed Hatfield Gautrans Station by Bernard Roccon (thesis proposal for MArch(Prof) degree, 2003), implemented to provide an efficient public transport link between Pretoria and Johannesburg.

Die vernaamste funksies van hierdie proke, d.w.s. die skep van 'n stabiele sentrum, wat ook dien as 'n toevlugsoord vir tydelike werkers, is die noodwendige resultaat van hierdie beplanningsproses.

Hierdie tesis mik veral na die herinstelling van 'n vertroue in die bouomgewing, en die skep van kwaliteit argitektuur deur werkverskaffing en vakmanskap.



The functions of the project, a stable centre acting as a datum point and haven for temporary workers, is a result of this planning process.

This thesis aims at re-establishing a trust in the built environment through quality architecture, by promoting work and workmanship.

All figures by Author, 2003, unless otherwise specified

01 1

- 1.1 Diagram of programme generators. **Diagram.**
- 1.2 Map of South Africa indicating Gauteng and Pretoria. **Computer generated image.**
- 1.3 Gautrain Rapid Rail Link route and stations. **Diagram. (Gautrain Rapid Rail Link:2003)**
- 1.4 Hatfield, Pretoria. **Computer generated image.**
- 1.5 Context plan for proposed development. **Plan diagram.**
- 1.6 Hatfield Gautrain Station Development Master Plan. **Plan diagram.**
- 1.7 Diagram of response to socio-economical needs. **Diagram.**
- 1.8 – 1.10 Existing development on site. **Photo.**
- 1.11 Solar angles for Pretoria. **Table. (Napier 2000:34)**
- 1.12 Guideline for solar angle usage. **Diagram.**

02 8

- 2.1 Site management strategy. **Plan diagram**
- 2.2 Diagram of *Job Centre* functions. **Diagram.**
- 2.3 Old Hatfield Primary School building. **Photo.**
- 2.4 – 2.5 Motorcar showrooms in the vicinity. **Photo.**
- 2.6 Diagram of accommodation schedule layout. **Diagram.**
- 2.7 Diagrammatic office layout. **Diagram.**
- 2.8 Diagrammatic Take Away / Cafeteria layout. **Diagram.**
- 2.9 Diagrammatic Warehouse layout. **Diagram.**
- 2.10 Diagrammatic Overnight accommodation layout. **Diagram.**
- 2.11 Table of Schedule of Accommodation.

03 17

- 3.1 Commuter stakeholder. **Photo. (Yapp 1998:119)**
- 3.2 Stakeholder Weighting Table. **Table.**
- 3.3 Key Stakeholders Matrix. **Matrix.**
- 3.4 Possible Risks Quantification and Mitigation. **Table.**

04 21

- 4.1 South-east corner of the museum, looking along the south colonnade. **Photo (Buchanan 1999:157)**
- 4.2 Part section through a gallery showing the design of the leaves. **Section (Buchanan 1999:150)**
- 4.3 Exploded and cutaway perspective of the piece. **Photo (Buchanan 1999:152)**
- 4.4 Cross section through entrance lobby. **Section (Buchanan 1999:157)**
- 4.5 Ground-floor plan: note recessed entrance and cross-axis. **Plan (Buchanan 1999:154)**
- 4.6 Recess of the entrance. **Photo (Buchanan 1999:16)**
- 4.7 Cross and longitudinal sections through building. **Section (GA Document 2002:97)**
- 4.8 View of main entrance from street. **Photo (GA Document 2002:98)**
- 4.9 Interior view of gym. **Photo (GA Document 2002:96)**
- 4.10 East façade of gym. **Photo (GA Document 2002:98)**
- 4.11 View down concrete roof playground. **Photo (GA Document 2002:71)**
- 4.12 Entrance to a walkway leading to classrooms. **Photo (GA Document 2002:99)**
- 4.13 View towards classrooms and roofscape. **Photo (GA Document 2002:70)**

05 25

- 5.1 Modal Transfer planning concept 1.
- 5.2 Modal Transfer planning concept 2.
- 5.3 Urban design concept: enveloping the ancillary functions with the residential component. **Isometric diagram.**
- 5.4 Rotating the vertical to form a horizontal residential plane. **Isometric diagram.**
- 5.5 Moving interior social space to the exterior. **Isometric diagram.**
- 5.6 Urban design concept applied to an urban context. **Isometric diagram.**
- 5.7 Urban design concept diagrammatically applied to the project. **Isometric diagram.**

06 29

- 6.1 Conceptual sketch progression from first concept to final proposal. **Sketches**
- 6.2 Diagrammatic south-western aerial view of first concept. **Isometric diagram.**
- 6.3 South elevation. **Computer generated image.**
- 6.4 South-western view of entrance. **Computer generated image.**
- 6.5 Southern aerial view. **Computer generated image.**

List of Figures

University of Pretoria, etd - Van der Westhuizen, A L (2003)

- 6.6 Eastern aerial view. Computer generated image.
6.7 Western aerial view. Computer generated image.
6.8 South-western aerial view of entrance. Computer generated image.
6.9 Eastern aerial view. Note the ordering of elements on façade. Computer generated image.
6.10 North-eastern aerial view. Computer generated image.
6.11 South-eastern aerial view. Computer generated image.
6.12 Plans, section and elevations of mid-year proposal. Plans, sections, elevations.
6.13 Block model: southeastern aerial view. Computer generated image.
6.14 Block model: southwestern view of entrance to *Job Centre* and Bus Terminal. Computer generated image.
6.15 View of entrance from School street: note the roof ponds. Computer generated image.
6.16 North-eastern aerial view. Computer generated image.
6.17 North elevation. Computer generated image.
6.18 South elevation. Computer generated image.
6.19 South-eastern aerial view. Computer generated image.
6.20 South-western aerial view. Computer generated image.
6.21 Eastern aerial view. Computer generated image.
6.22 Diagrammatic layout of main structure and functions. Isometric diagram.
6.23 Northeastern isometric diagrammatic composition of structure and building elements. Isometric diagram.
6.24 Southwestern isometric diagrammatic composition layout of main structure and functions. Isometric diagram.
6.25 South-eastern aerial view of final design. Computer generated image.
6.26 Eastern aerial view of final design in context with the HGSD. Computer generated image.
6.27 Eastern aerial view of final design in context with the HGSD. Computer generated image.
6.28 Eastern view of office part of complex on model. Photo.
6.29 Southeastern aerial view of model. Photo.
6.30 Southwestern aerial view of model. Photo.
- 07 43**
- 7.1 Perspective section through office units. Illustration.
7.2 East-West orientation to maximize daylighting. Plan diagram.
7.3 Nighttime filtered illumination of adjacent spaces from inside. *Job Centre*. Computer generated image.
7.4 Views towards adjacent facilities. Plan diagram.
7.5 Western perspective with screens taken off indicating internal circulation and the entrance. Computer generated image.
7.6 Ablution facilities on ground floor. Plan.
7.7 Planting in courtyards on ground floor plan. Plan.
7.8 Building line recessed to respect historic building. Plan diagram.
- 08 49**
- 8.1 Structure of overhead unit in conceptual stage. Computer generated image.
8.2 Section indicating structure. Section.
8.3 Plan of structural grid. Plan.
8.4 Diagram depicting environmental filter to obtain a comfortable exterior microclimate. Isometric diagram.
8.5 Section through unit indicating external insulation and internal exposure of mass elements. Section.
8.6 East-west wind propagation due to Venturi effect. Illustration.
8.7 Turbulence due to passing shuttles. Plan diagram.
8.8 North-south wind propagation due to Venturi effect. Illustration.
8.9 Mechanical ventilation system. Isometric diagram.
8.10a Polycarbonate sheeting sliding windows. Computer generated image.
8.10b Skin system consisting of translucent screens and cavities. Illustration.
8.11 Summer and winter sun and shadow lines indicating influence of louvre system. Illustration.
8.12 Louvre system structure. Computer generated image.
8.13 Brick types used in brick screen system. Photos. (Corobrik:2003)
8.14 Component detail of brick screen system. Isometric illustration.
8.15 Overnight accommodation unit building service channels in steel columns. Isometric illustration.
8.16 Sources of noise and large-scale acoustic treatment. Plan diagram.
8.17 Acoustic treatment. Illustration.
8.18 View of roof ponds and timber decking with overhead structure taken off. Computer generated image.
8.19 Roof pond structure. Isometric illustration.
8.20 Pump system diagram. Diagram.
8.21 Water circulation speed diagram. Diagram.

- 8.22 Roof drainage plan of office block 1. Plan.
8.23 Isometric detail of walkways and ballustrading. Isometric illustration.
8.24 Rendered perspective of timber clad walkways. Computer generated image.

09 67

Technical Drawings

10 80

- 10.1 *The Constructor* (1924), El Lissitzky. Painting (Zambonini 1988:5)
10.2 Leonardo da Vinci. *Madonna of the Rocks*. Begun 1483. Oil on panel.
Painting (Fleming 1995:279)
10.3 Jackson Pollock at work in his studio, 1950. Photo (Fleming 1995:635)
10.4 Jackson Pollock. *Lucifer*. 1947. Oil, enamel, and aluminum paint on canvas.
Painting (Fleming 1995:632)
10.5 Internal-external relationship through the building's skin. Illustration.
10.6 Illusion of movement on the building's skin created using different toned strips. Illustration.
10.7 "Box" versus "Blob". Illustration.
10.8 analogy made with a train crossing a bridge. Illustration.
10.9 Repetition of elements resulting in linear growth. Illustration.
10.10 Conceptual perspective of office roofscape with overhead structure taken off. Computer generated image.
10.11 Diffusion of light by screens. Illustration.
10.12 Diagrammatic section indicating degrees of exclusivity in circulation spaces.
Section diagram.
10.13 Approach to Bus Terminal and Gautrain Station area from Schoeman street. Computer generated image.
10.14 Main public transportation volume. Computer generated plan.
10.15 Relationship to other buildings on north elevation. Computer generated image.
10.16 Regulating lines on southern façade. Illustration.
10.17 Regulating lines on northern façade. Illustration.
10.18 Regulating lines and rhythm on eastern façade. Illustration.
10.19 Breaking of order on façade due to sliding screens. Section diagram.
10.20 Transformation of a node on plan to a legible vertical element in space. Illustration.
10.21 Entrance emphasized by stepping out of building line. Computer generated image.
10.22 Western approach from School Lane. Illustration.
10.23 The hidden fascinate. Computer manipulated image.
10.24 Southwestern approach from shuttle road. Illustration.
10.25 Southern approach from the arrival platform of the Gautrain station towards entrance of Job Centre. Illustration.

V

Prologue	i		
Summary	ii		
List of figures	iv		
01 Project Overview			
1.1 <i>INTRODUCTION</i>	1	04 Precedent Studies	
1.2 <i>VISION</i>		4.1 <i>THE MENIL COLLECTION</i>	21
1.3 <i>CONTEXT</i>	2	4.2 <i>ALTEMIRA SCHOOL</i>	23
1.4 <i>LOCATION</i>			
1.5 <i>SOCIÆCONOMICAL NEEDS</i>	5		
1.6 <i>FUNCTION</i>			
1.7 <i>URBAN DESIGN</i>	6	05 Urban Design Concept	
1.8 <i>SITE</i>		5.1 <i>INTRODUCTION</i>	25
1.9 <i>BIOPHYSICAL</i>	7	5.2 <i>CONCEPT</i>	26
02 Project Profile		06 Design Development	
2.1 <i>INTRODUCTION</i>	8	6.1 <i>FIRST CONCEPT</i>	31
2.2 <i>SITE MANAGEMENT STRATEGY</i>		6.2 <i>SECOND CONCEPT</i>	32
2.3 <i>CLIENT PROFILE</i>		6.3 <i>MIDYEAR REVIEW</i>	33
2.4 <i>USER PROFILE</i>		6.4 <i>TECHNICAL REPORT REVIEW</i>	35
2.5 <i>FINANCIAL PROFILE</i>	9	6.5 <i>FINAL DESIGN PROPOSAL</i>	37
2.6 <i>VISION</i>			
2.7 <i>AIMS</i>			
2.8 <i>GOALS</i>			
2.9 <i>FUNCTION</i>	10		
2.10 <i>RECRUITMENT PROCESS</i>			
2.11 <i>ONSITE EMPLOYMENT</i>			
2.12 <i>SERVICE PROVISION</i>			
2.13 <i>CONSTRUCTION</i>	11		
2.14 <i>SUSTAINABILITY</i>			
2.15 <i>ARCHITECTURE</i>	12		
2.16 <i>ACCOMMODATION SCHEDULE</i>			
03 Feasibility and Risk			
3.1 <i>INTRODUCTION</i>	17		
3.2 <i>STAKEHOLDERS</i>	18		

Contents

07 Baseline Response		10 Design Discourse		11 References	93
7.1 <i>SOCIAL RESPONSE</i>	43	10.1 <i>INTRODUCTION</i>	80		
7.2 <i>ECONOMICAL RESPONSE</i>	47	10.2 <i>WORK</i>			
7.3 <i>ENVIRONMENTAL RESPONSE</i>	48	10.3 <i>MAKE</i>	81		
08 Technical Report		10.4 <i>TIME</i>	83		
8.1 <i>STRUCTURE</i>	51	10.5 <i>FORM</i>	84		
8.2 <i>ENVIRONMENTAL PERFORMANCE</i>	53	10.6 <i>SPACE</i>	85		
8.3 <i>THERMAL INERTIA</i>	54	10.7 <i>ORDER</i>	88		
8.4 <i>INSULATION</i>		10.8 <i>CONCLUSION</i>	92		
8.5 <i>NATURAL VENTILATION</i>	55				
8.6 <i>MECHANICAL VENTILATION</i>	56				
8.7 <i>SKIN SYSTEM</i>	57				
8.8 <i>LOUVRE SYSTEM</i>	58				
8.9 <i>BRICK SCREEN SYSTEM</i>	59				
8.10 <i>BUILDING SERVICES</i>	60				
8.11 <i>ACOUSTIC TREATMENT</i>	61				
8.12 <i>ROOF POND SYSTEM</i>	63				
8.13 <i>DRAINAGE</i>	65				
8.14 <i>MATERIALS</i>	66				
09 Technical Drawings	67				
<i>GROUND FLOOR PLAN</i>					
<i>FIRST FLOOR PLAN</i>					
<i>SECOND FLOOR PLAN</i>					
<i>THIRD FLOOR PLAN</i>					
<i>ROOF PLAN</i>					
<i>SECTION A_A</i>					
<i>SECTION B_B</i>					
<i>SECTION C_C</i>					
<i>SECTION D_D</i>					
<i>TYPICAL UNIT PLAN</i>					
<i>UNIT SECTION</i>					
<i>UNIT DETAIL</i>					
					vii
				ABBREVIATIONS	
				HGSD Hatfield Gautrain Station	
				Development.	
				HUDD Hatfield Urban Design Framework.	
				DL Department of Labour.	
				DOT Department of Transport.	