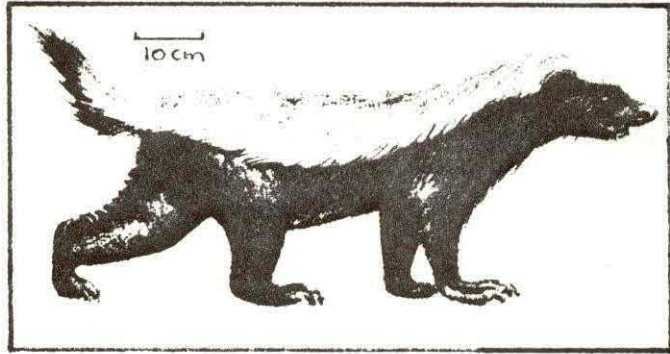


# HONEY BADGER



Family:

MUSTELLIDAE



*Mellivora capensis*

(Schreber, 1776)

## DISTRIBUTION:

Throughout southern African sub-region except Namib coastal strip.

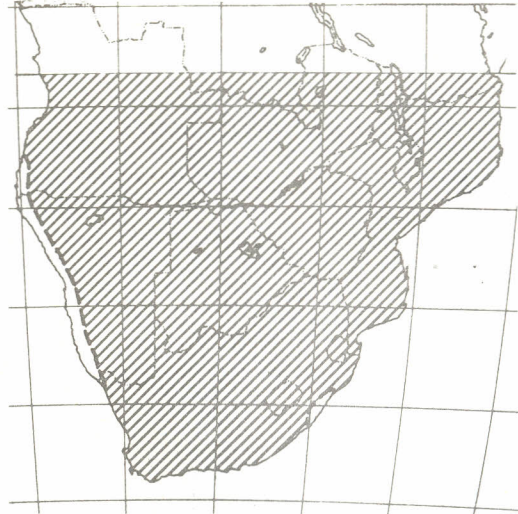
## HABITAT:

Diverse, varying from open dry savannah to dense forest.

## HABITS:

Nocturnal. Solitary or in pairs. Digs burrows. Diet: omnivorous, feeds on small rodents or shrews, snakes, insects even young antelope but also roots, bulbs, fruit and honey and pupae of wild bees.

Honey Badger



---

## HAIR

### GENERAL DESCRIPTION OF FUR:

Upperparts from crown of head to tail whitish, grey. Tail, sides and underparts black.

### INDIVIDUAL HAIRS:

Length:  $31,78 \pm 4,51$  mm

Colour: Entirely black or yellowish white (4).

### Cross-sections:

#### *Guard hairs* -

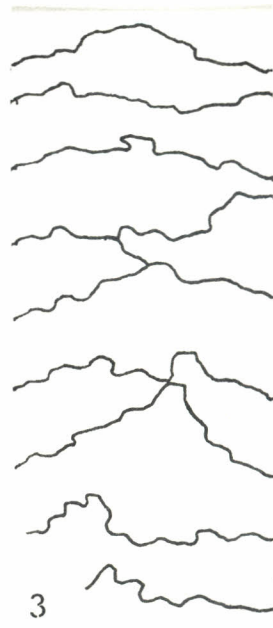
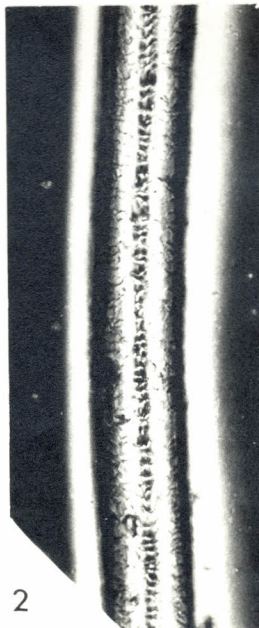
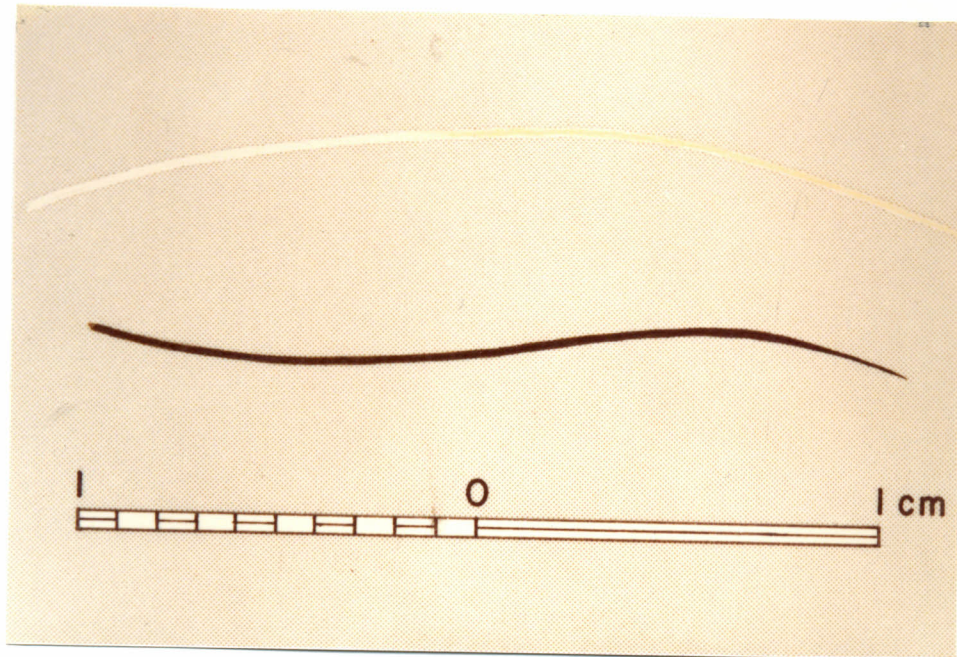
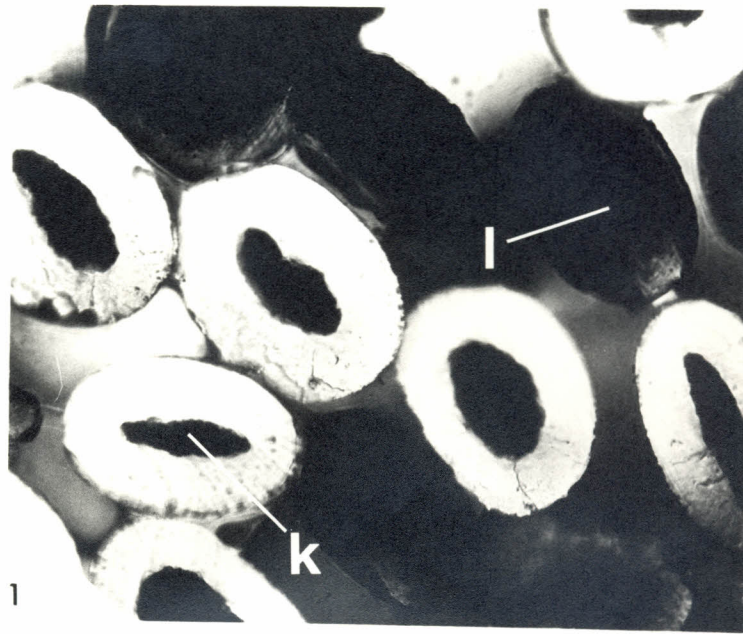
Oblong medium medulla (1k) darkly pigmented cortex in some hairs (1l)..

#### *Underfur* -

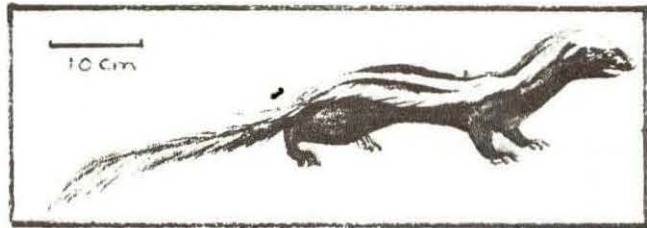
Oblong medium and large medulla.

### Cuticular scale patterns:

Irregular waved mosaic along length (2) and (3). One or two scales across width (2). Scale margins: rippled-crenate. Distance apart of scales: near.



# WHITE - NAPED WEASEL





White-naped weasel

## DISTRIBUTION:

Eastern and northern Cape Province, Natal, Orange Free State, Transvaal, western Mozambique, Botswana and Rhodesia.



## HABITAT:

Savannah and open country.

## HABITS:

Diurnal as well as nocturnal. Terrestrial. Lives singly or in pairs or small groups. Scent-gland well developed. Enters burrows in search of food. Runs alongside prey then rolls itself round it.

Diet: mostly rodents, birds, reptiles and insects.

---

## HAIR

### GENERAL DESCRIPTION OF FUR:

White top of head, divides to form four white stripes down length of body. Rest of body blackish or yellowish.

### INDIVIDUAL HAIRS:

Length:  $7,44 \pm 0,35$  mm

Colour: Entirely black or yellowish-white (5).

### Cross-sections:

#### *Guard hairs* -

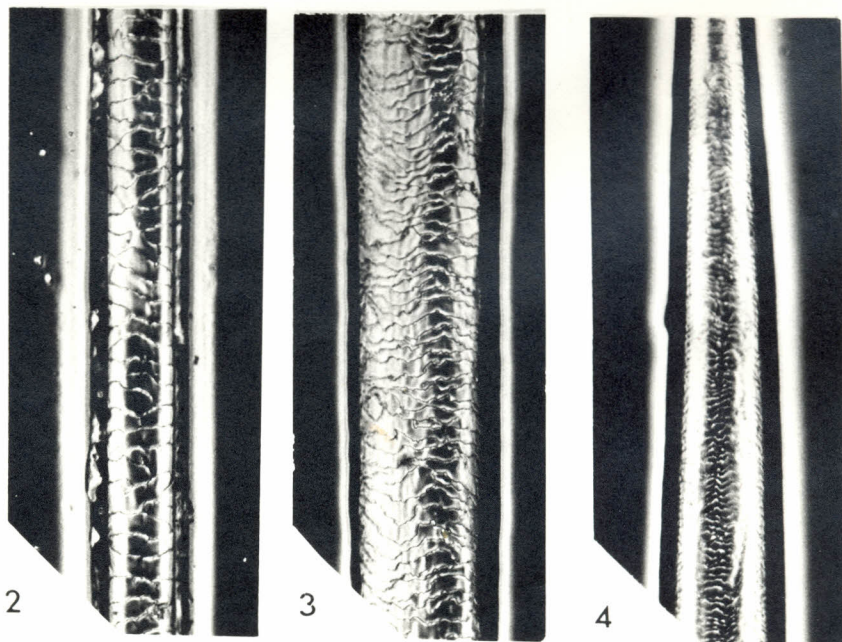
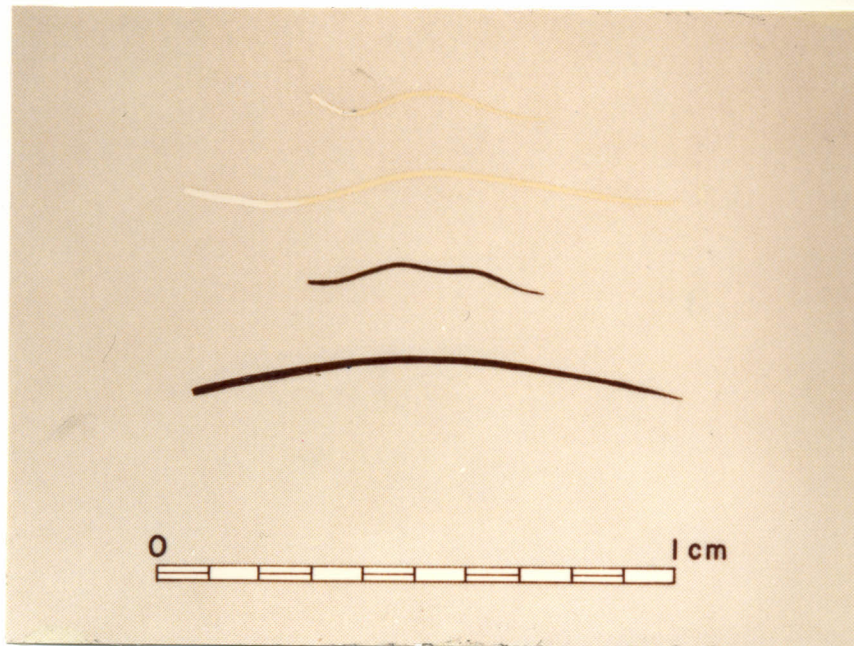
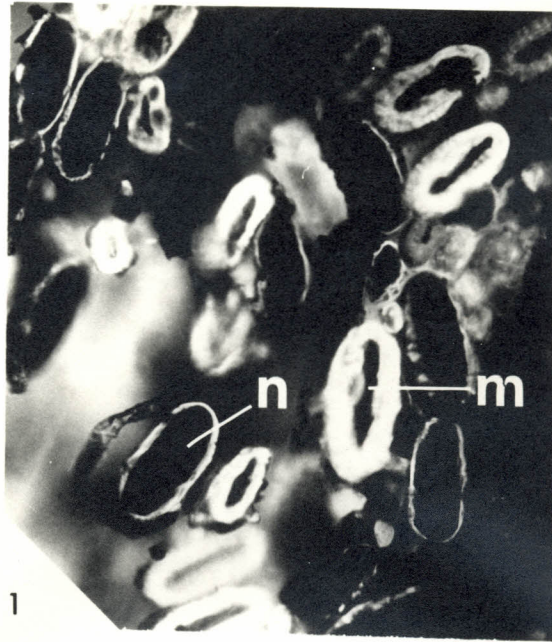
Distinctly oblong, medium medulla (lm) or large medulla (ln).

#### *Underfur* -

Oblong, medium and large medulla.

### Cuticular scale patterns:

Base, waved mosaic, one or two scales across width of hair (2). From third of hair to tip, irregular waved mosaic (3) and (4). Scale margins: rippled-crenate. Distance apart of scales: near/close.



# STRIPED POLECAT





## DISTRIBUTION:

Throughout southern African sub-region.

## HABITAT:

Diverse, from savannah open country to high mountains.

## HABITS:

Nocturnal. Solitary. Terrestrial, seeking refuge in burrows of other species, or its own. Well-developed perineal glands secrete ill-scented odour when threatened.

Diet: rodents, birds and eggs, reptiles, insects.

Striped Polecat



---

## HAIR

### GENERAL DESCRIPTION OF FUR:

Soft coat. Strikingly contrasted black and white stripes on upper parts. Four conspicuous white stripes run length of back. Underparts black.

### INDIVIDUAL HAIRS:

Length:  $30,33 \pm 11,05$  mm

Colour: Entirely black or yellowish-white.  
Dark grey. Yellowish-white banded. Black (3).

### Cross-sections:

#### *Guard hairs* -

Oblong, medium medulla (10). Oblong large medulla (1p).

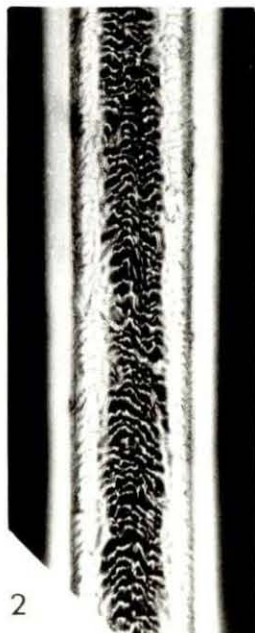
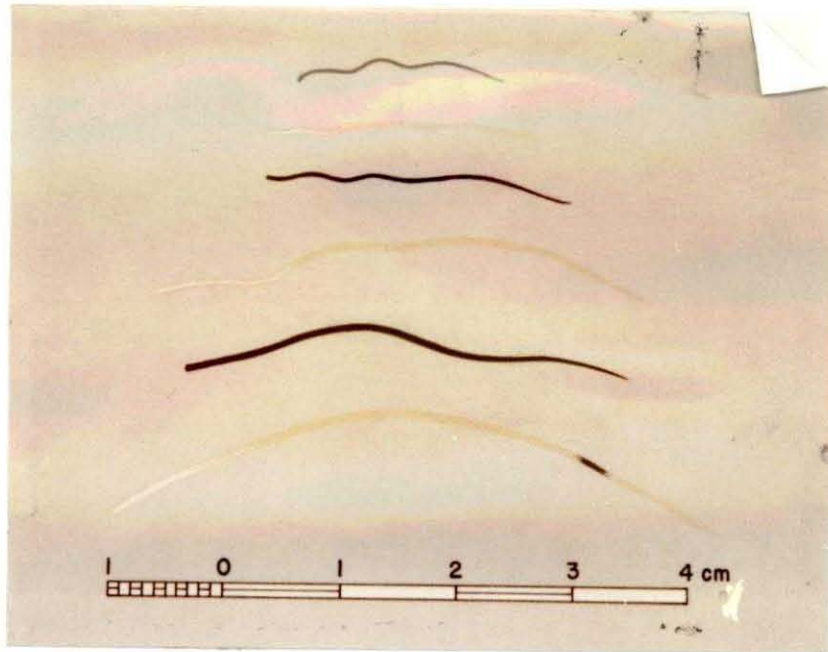
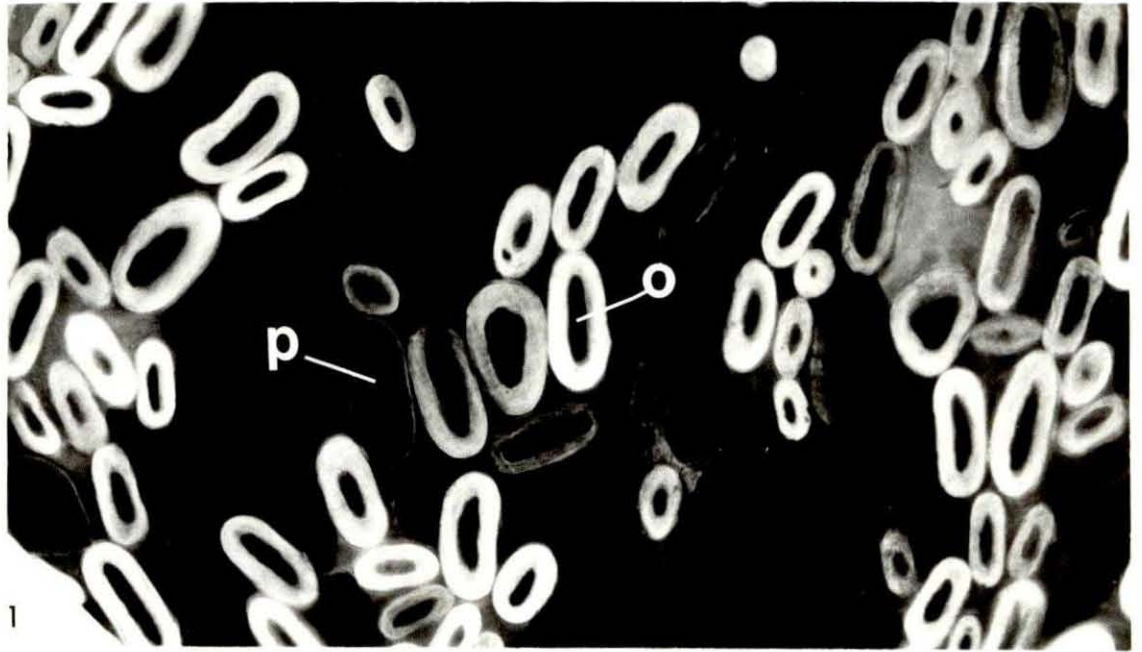
#### *Underfur* -

Oblong medium medulla, oblong large medulla.

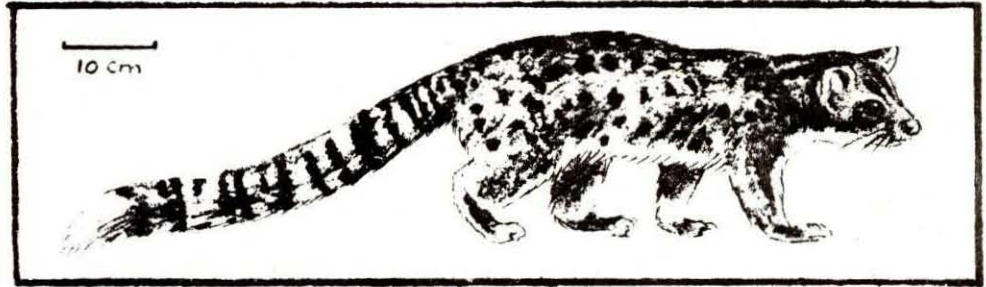
### Cuticular scale patterns:

Irregular waved mosaic with slight chevron peak to the scales (2). Scale margins: distinctly rippled. Distance apart of scales: near.





## TWO-SPOTTED PALM CIVET



## Two-spotted Palm Civet

**DISTRIBUTION:**

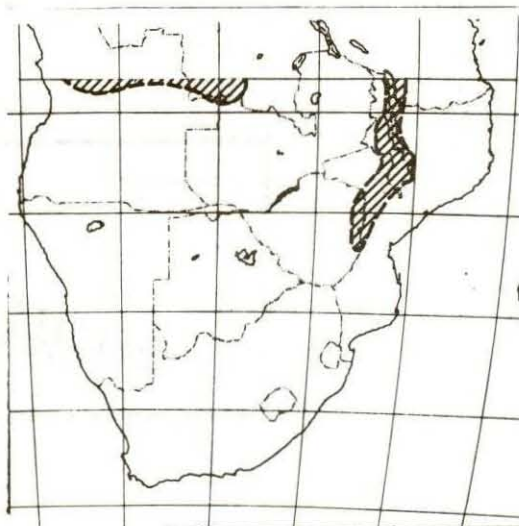
Eastern Rhodesia and parts of Mozambique.

**HABITAT:**

Forests and forested savannah.

**HABITS:**

Nocturnal. Arboreal. Spends day hidden among trees or vines. Diet: diversified, feeds on vegetable matter - particularly fruit, arboreal rodents, birds and birds eggs.




---

**HAIR**

**GENERAL DESCRIPTION OF FUR:** Coarse coat of dense hairs. General colour buffish grey tinged with chestnut and marked with numerous indistinct black spots in rows on upper parts. Two creamy spots on shoulders. Underparts light-grey, tinged yellowish. Tail long, dark with  $\pm$  12 narrowish rings.

**INDIVIDUAL HAIRS:**

**Length:**  $18,1 \pm 4,5$  mm.

**Colour:** Entirely sepia, or sepia tipped grey. Sepia banded paler, tipped black (4).

**Cross-sections:***Guard hairs -*

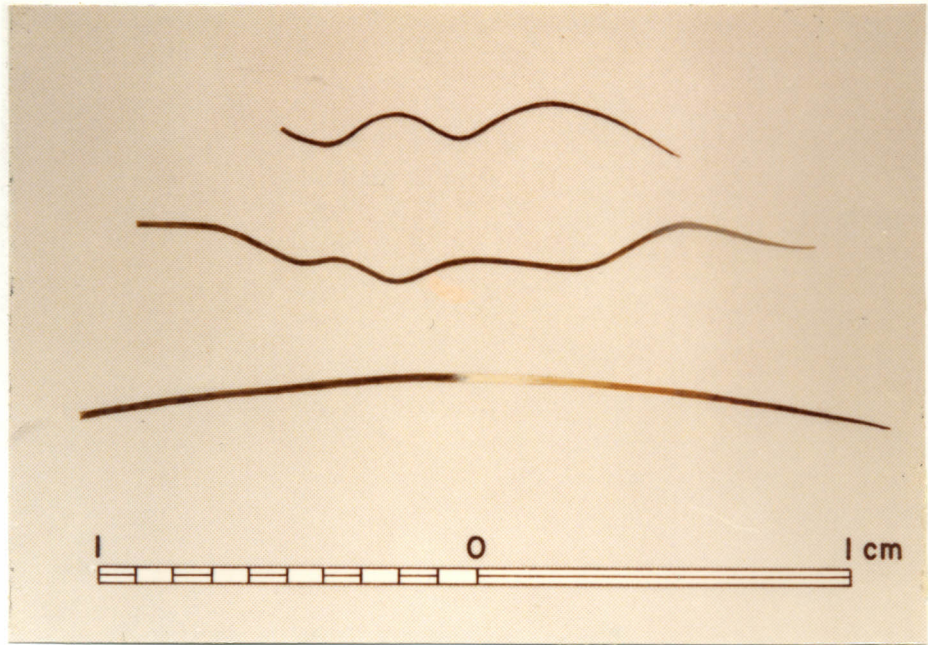
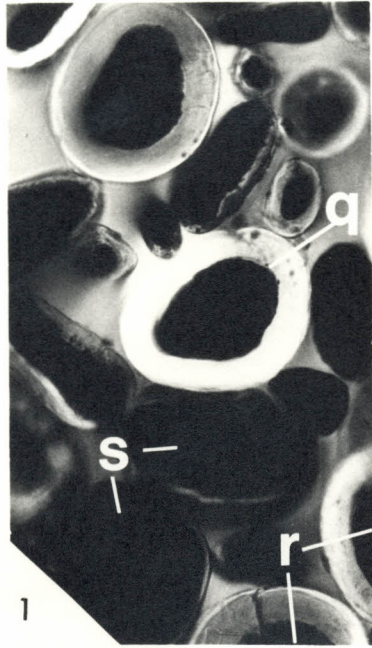
Circles medium medulla (1q). Ovals medium medulla (1r).  
Ovals large medulla (1s).

*Underfur -*

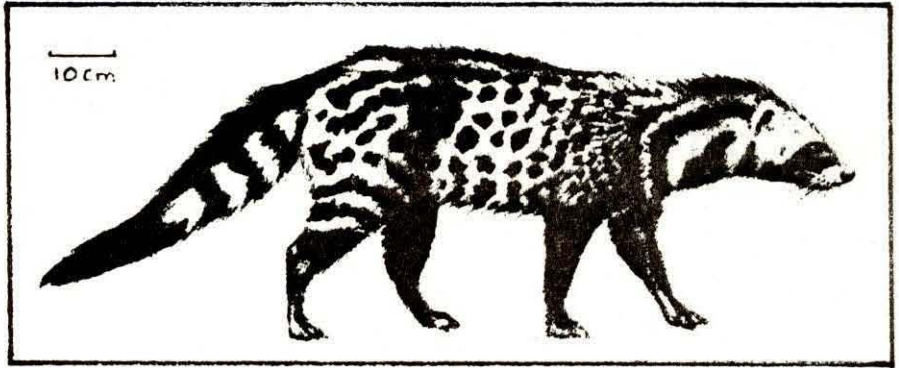
Circles and ovals (numerous) medium and large medulla.

**Cuticular scale patterns:**

Distinct diamond petal. 4 scales across width (2) and (3). Waved mosaic towards tip. Scale margins: smooth in petal, rippled-crenate in mosaic. Distance apart of scales: distant in petal, near in waved mosaic.



# CIVET



Family: VIVERRIDAE

*Viverra civetta*  
Schreber, 1776

## DISTRIBUTION:

Northern Natal, Swaziland, Transvaal Mozambique, Rhodesia, eastern and northern Botswana, north-eastern Namibia.

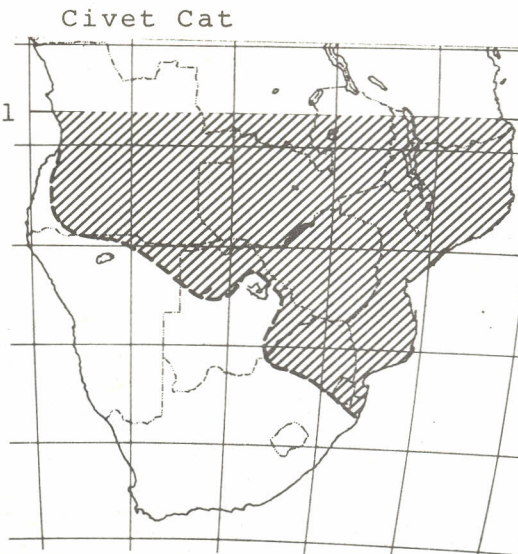
## HABITAT:

All types of savannah, sometimes dense forest.

## HABITS:

Nocturnal. Solitary. Well-developed musk glands. Omnivorous. Not an efficient killer.

Diet: carrion and a variety of prey including rodents, birds, eggs, small game, lizards and frogs and insects.



## HAIR

### GENERAL DESCRIPTION OF FUR:

Long, coarse bristly hairs, light-grey forehead and white muzzle. From neck to tail, line of shaggy black hairs. Ground colour - grey buffish with black spots in rows along body and across tail.

### INDIVIDUAL HAIRS:

Length:  $72,0 \pm 2,79$  mm

Colour: Entirely black. Black banded off-white, or off-white base. Entirely sepia or sepia tipped light brown (4).

### Cross-sections:

#### *Guard hairs -*

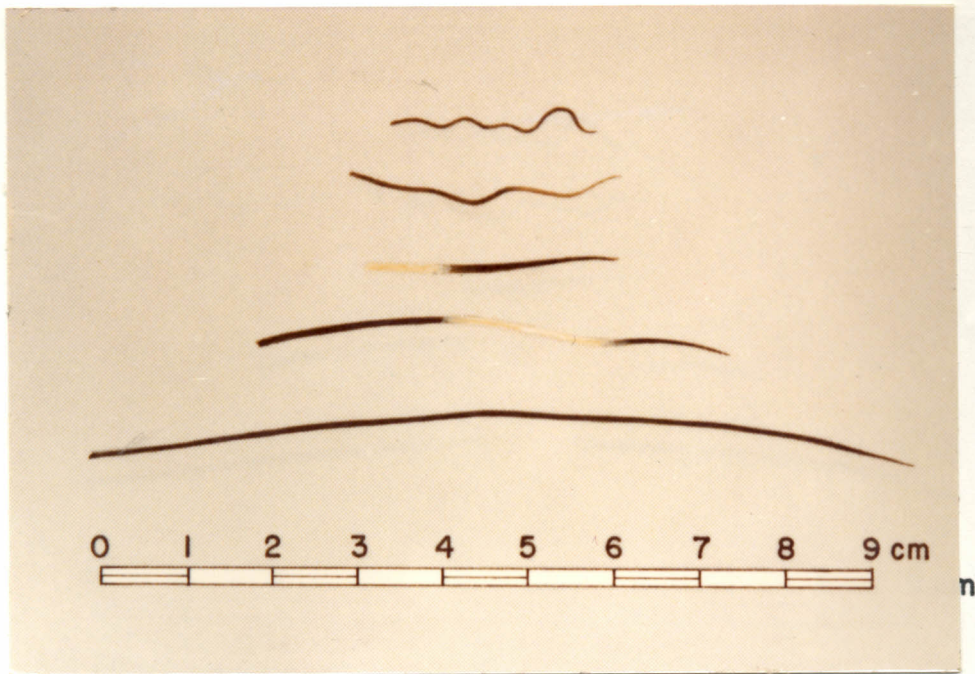
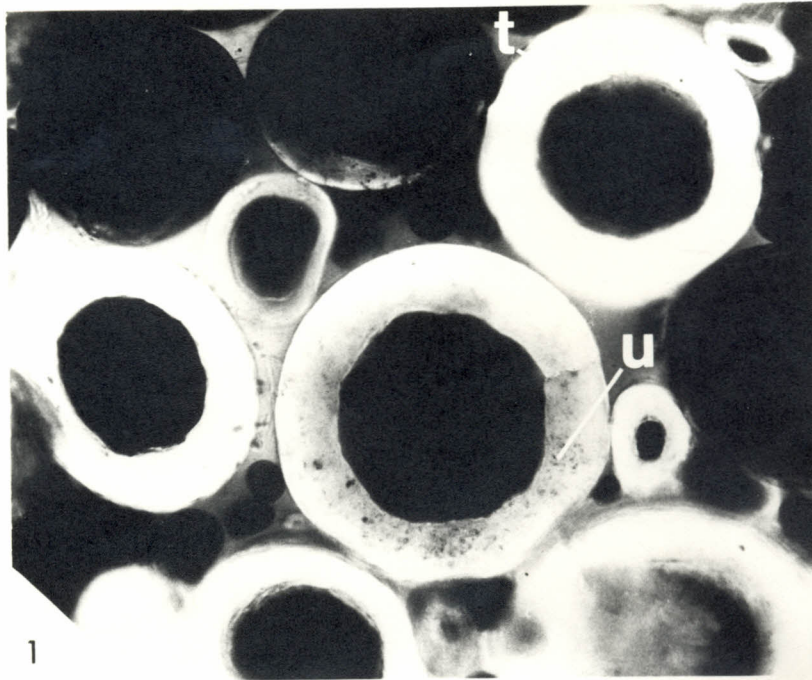
Large circles, medium medulla (lt). Some large circles with clearly pigmented cortex (lu).

#### *Underfur -*

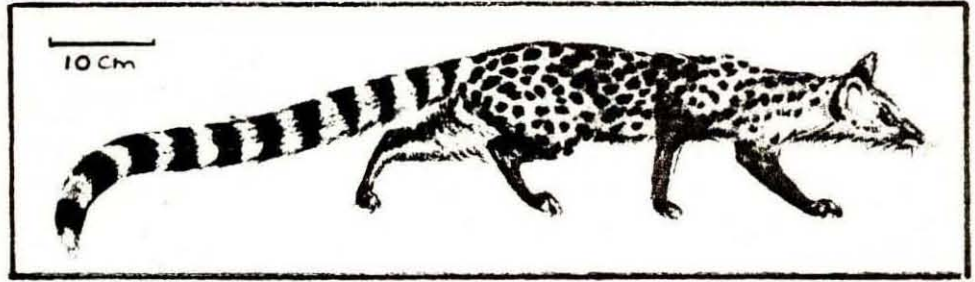
Small circles some with small medulla, and some with large medulla.

### Cuticular scale patterns:

Petal, almost diamond petal along shaft (2) changing to fairly regular waved mosaic towards tip (3). Scale margins: smooth in petal, slightly rippled in mosaic. Distance apart of scales: distant in petal, near in waved mosaic.



# SMALL-SPOTTED GENET





## DISTRIBUTION:

Throughout southern African sub-region except part of south coast and eastern regions as shown, and Namib coastal strip.

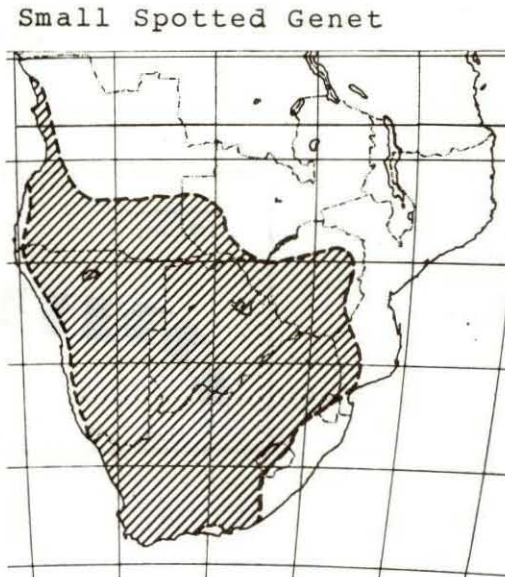
## HABITAT:

Dry savannah and open country. The only genet found in open dry savannah.

## HABITS:

Entirely nocturnal. Lives singly or in pairs. Terrestrial and arboreal.

Diet: hares, snakes, insects, birds, vegetable matter. Kills poultry.



---

## HAIR

### GENERAL DESCRIPTION OF FUR:

Coat long and soft with well developed crest along spine. Ground colour greyish to fawn with dark line along back. Dark brown and blackish spots arranged more or less in rows. Tail 9-10 dark rings, white tipped.

### INDIVIDUAL HAIRS:

Length:  $32,90 \pm 11,40$  mm.

Colour: Black, white base, or banded white. Dark Grey (4).

### Cross-sections:

#### *Guard hairs* -

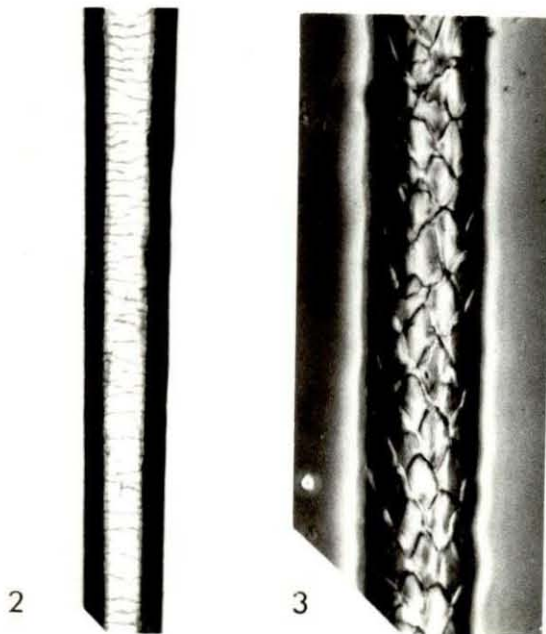
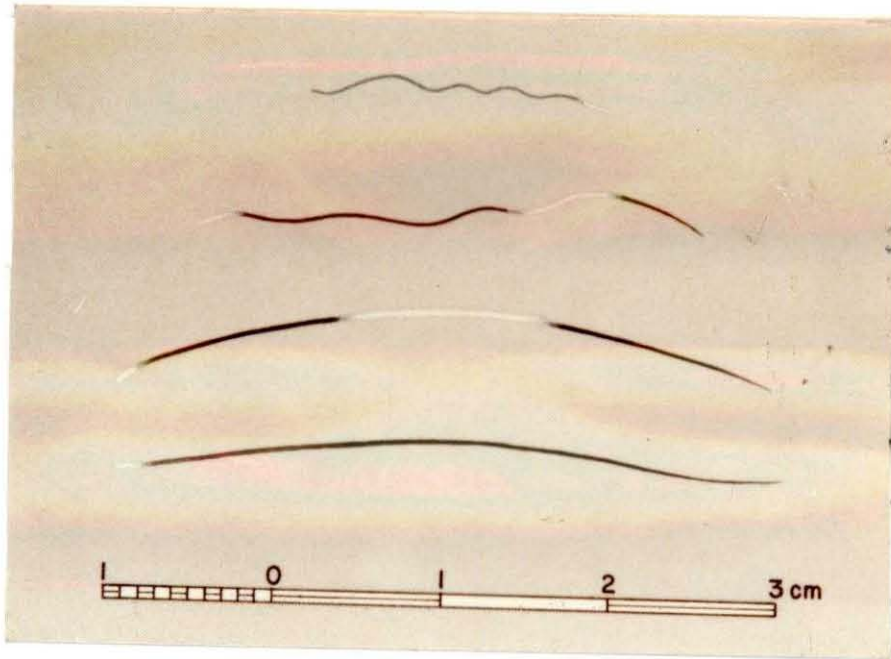
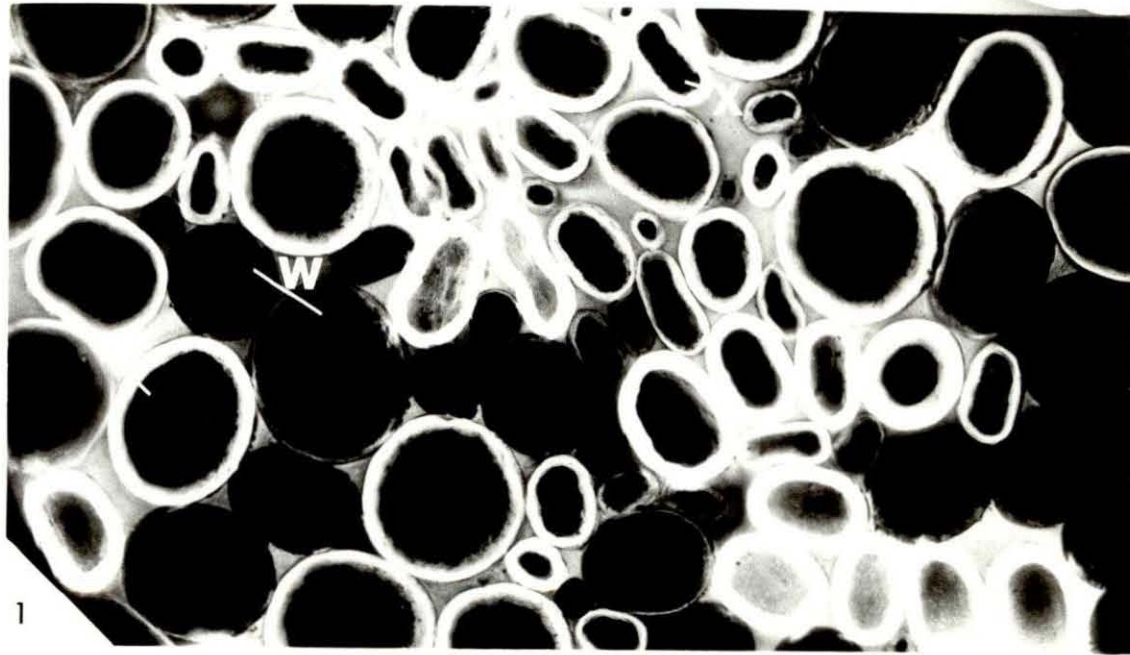
Circles medium and large medulla (lv) and (lw). Fewer ovals with large and medium medullas (lx). Colours black and white.

#### *Underfur* -

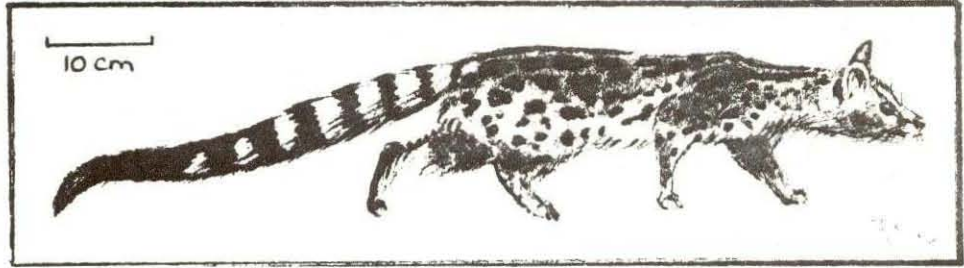
Ovals and circles with medium medullas.

### Cuticular scale patterns:

Clearly marked diamond petal (3). Base coronal (2), mosaic at tip. Scale margins: smooth, slightly crenate in mosaic. Distance apart of scales: distant in petal, near in mosaic.



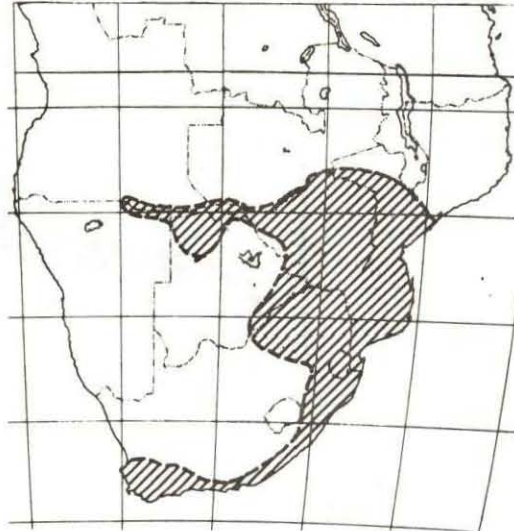
# LARGE - SPOTTED GENET



**DISTRIBUTION:**

Western and eastern Cape Province, Natal, Transvaal, Mozambique, Rhodesia, northern Botswana, and north-eastern Namibia.

Large Spotted Genet

**HABITAT:**

Bush, woodland, savannah but not high forest.

**HABITS:**

Nocturnal. Terrestrial and arboreal.

Diet: birds, lizards, insects and vegetable matter.

---

**HAIR**
**GENERAL DESCRIPTION OF FUR:**

Coat soft, short with distinct dorsal line. Ground colour, brownish grey to pale yellowish or buffish white with dark spots which are more or less arranged in longitudinal lines. Tail with eight or nine dark rings and wide dark tip.

**INDIVIDUAL HAIRS:**

Length :  $24,0 \pm 3,25$  mm

Colour : Brown or sepia banded yellow-white or light brown. Entirely sepia. Entirely grey. Light brown, tipped sepia.

**Cross-sections:***Guard hairs -*

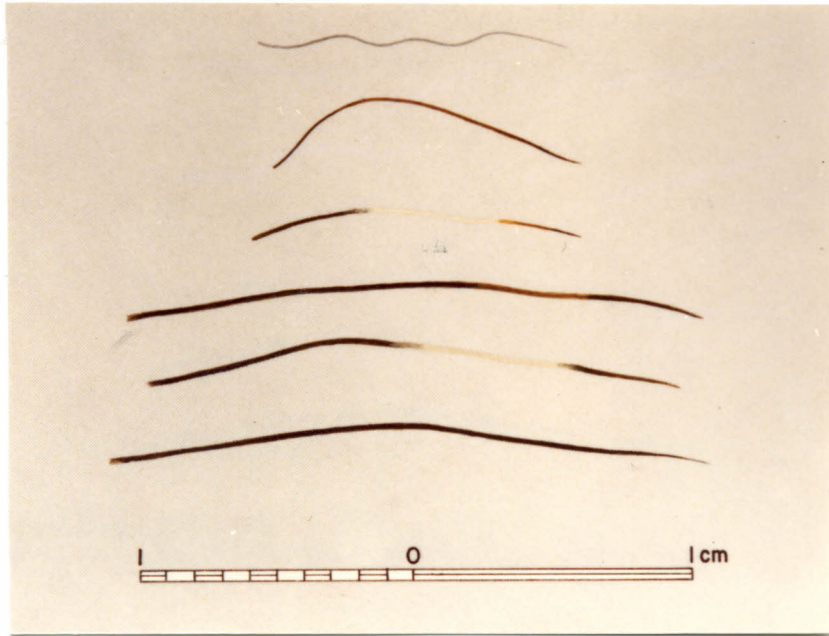
Ovals, large medulla (not clear in photograph).  
Ovals, medium medulla (1y).

*Underfur -*

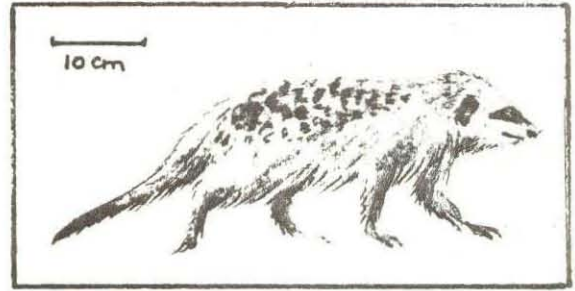
Circles and ovals, large medulla. Circles medium medulla.

**Cuticular scale patterns:**

Petal (3), waved mosaic towards tip. Scale margins: smooth in petal, crenate in mosaic. Distance apart of Scales: distant in petal, near in mosaic.



# SURICATE



## DISTRIBUTION:

Cape Province, Orange Free State, Lesotho, southern Transvaal, Botswana, Namibia except Namib coastal strip.

## HABITAT:

Dry plains.

## HABITS:

Diurnal. Highly sociable. Digs own burrows but usually uses excavated burrows of ground squirrel. Vision well developed. Sits up on haunches.

Diet: mainly insects, spiders, millipedes, also bulbs.

Suricate



---

## HAIR

### GENERAL DESCRIPTION OF FUR:

Long soft coat patterned dorsally with pale and dark stripes. Head and throat dull whitish. Eyes and ears ringed with black. General colour, light grizzled fawn. Underparts pale buffy. Tail buffy, shortish ending in black tip.

### INDIVIDUAL HAIRS:

Length:  $26,32 \pm 3,22$  mm

Colour: Yellow white banded, or tipped black. Grey, or grey tipped white (3).

### Cross-sections:

#### *Guard hairs -*

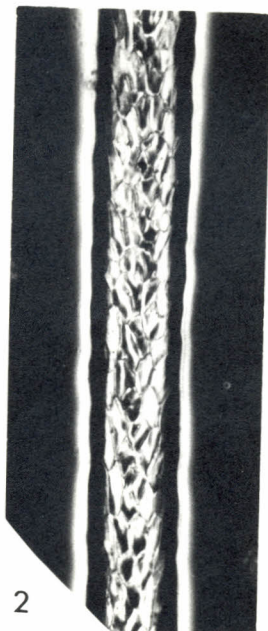
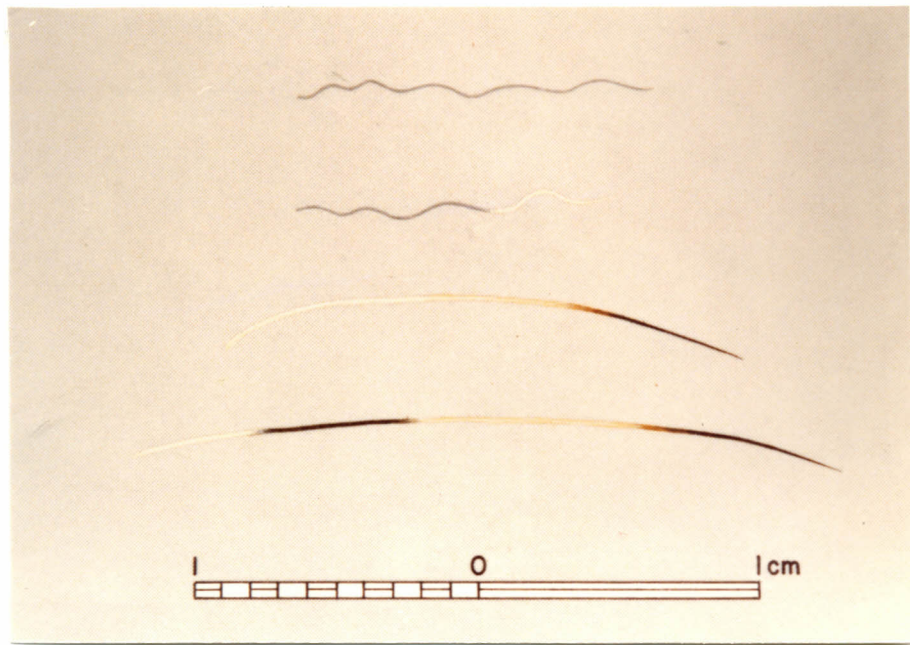
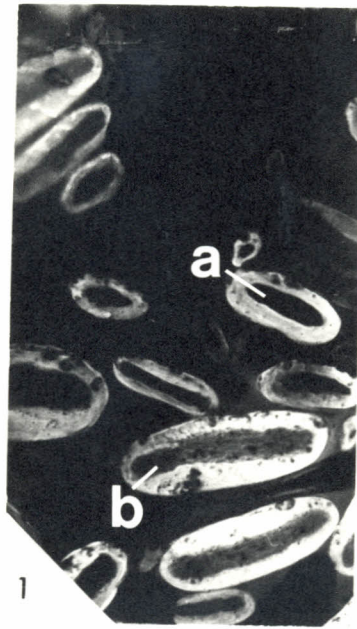
Ovals medium medulla (1a). Some ovals/oblongs with irregular medulla (1b).

#### *Underfur -*

In profusion mainly ovals, medium medulla.

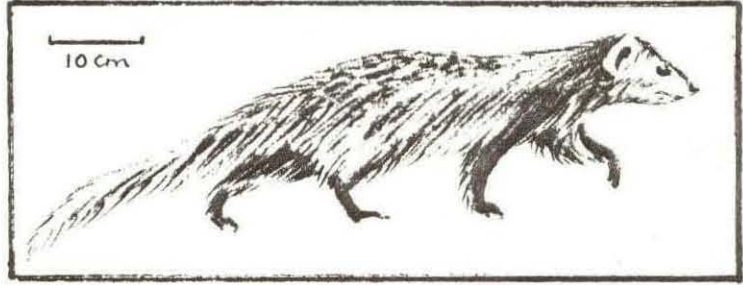
### Cuticular scale patterns:

Petal on shaft (2) mosaic towards tip. Scale margins: smooth, slightly rippled in mosaic. Distance apart of scales: near.





# SELOUS' MONGOOSE



## DISTRIBUTION:

Northern Natal, eastern Transvaal, western Mozambique, Rhodesia, northern Botswana, and north-eastern Namibia.

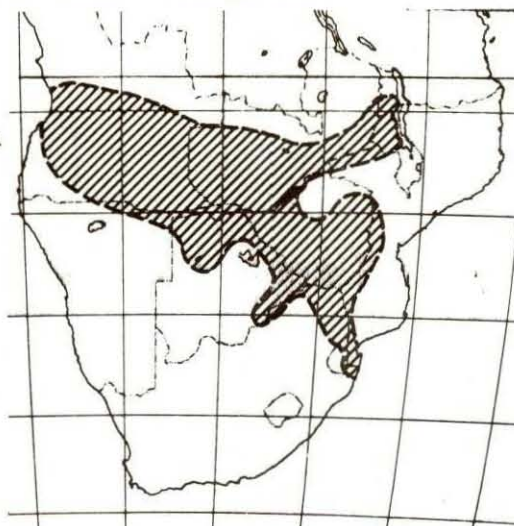
## HABITAT:

Open country and light woodland.

## HABITS:

Mainly nocturnal, occasionally seen in daylight. Lives singly or in pairs. Terrestrial, a burrower. Prefers sandy soils. Diet: insects, locusts and occasionally small vertebrates.

Selous' Mongoose



---

## HAIR

### GENERAL DESCRIPTION OF FUR:

Long soft fur. Brown-blackish overall colour. Upperparts speckled, buffy grey hairs ringed with white. Underparts light. Tail long, bushy, white tipped.

### INDIVIDUAL HAIRS:

Length:  $12,6 \pm 4,8$  mm

Colour: Black. Black banded white. Grey tipped or banded white, or grey banded white.

### Cross-sections:

#### *Guard hairs* -

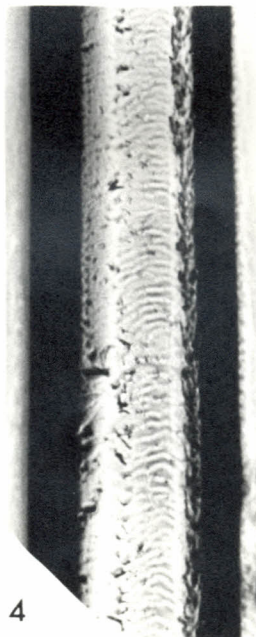
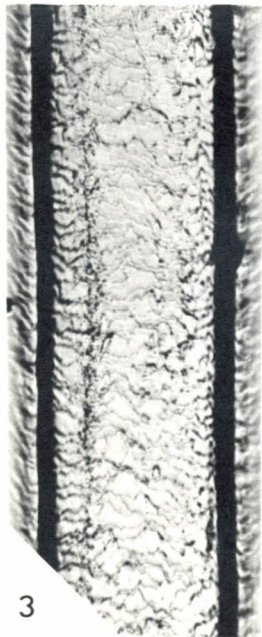
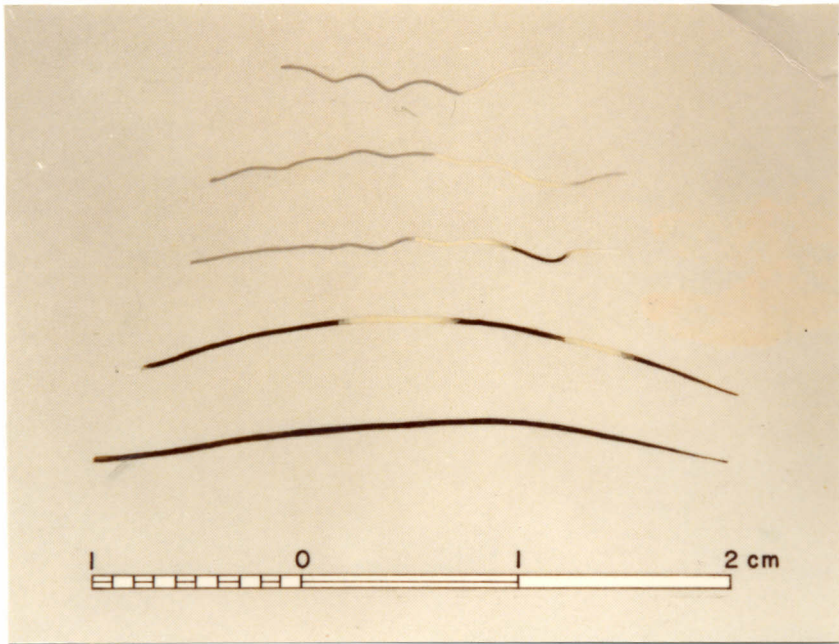
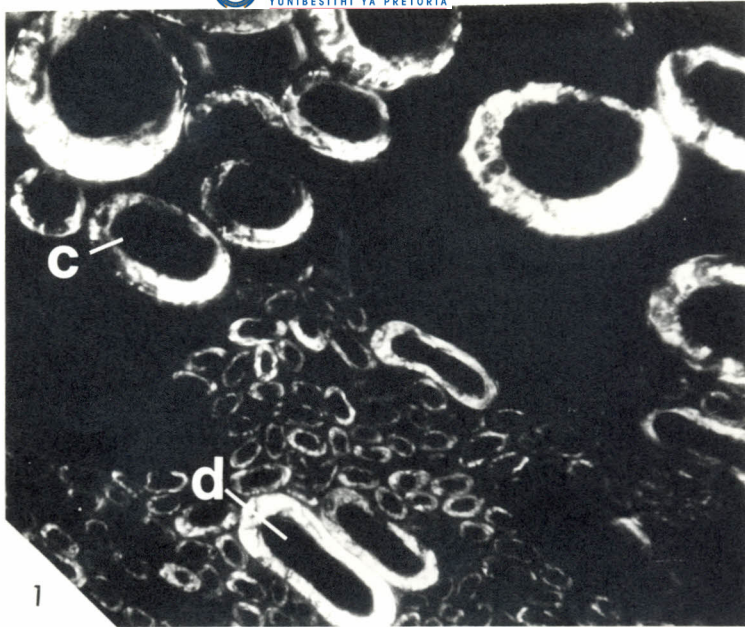
Ovals (1c), and oblongs with medium medulla (1d). Some concavo-convex as in (2).

#### *Underfur* -

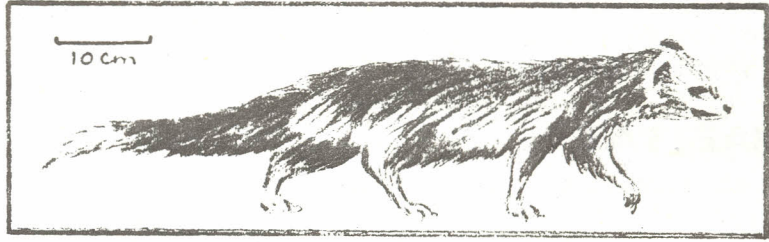
Ovals or oblongs with medium medulla.

### Cuticular scale patterns:

Irregular waved mosaic (3) and (4). Scale margins: rippled crenate. Distance apart of scales: near/close.



# YELLOW MONGOOSE



**DISTRIBUTION :**

Cape Province, Orange Free State, western Lesotho and Swaziland, north-western Natal, Transvaal, Botswana, Namibia except Namib coastal strip.

**HABITAT :**

Open savannah and Karroo country.

Yellow mongoose

**HABITS :**

Diurnal. Very sociable, lives in fairly large colonies. Sits up on haunches. Great burrower, digs underground tunnels in loose soil. Dung deposited in latrines.  
Diet: insects, small vertebrates and birds.

---

**HAIR**
**GENERAL DESCRIPTION OF FUR :**

Coat long, thick woolly underfur. Colour tawny, yellowish orange. Head greyish-fawn, white chin. Forelimbs and underparts tawny buff. Tail short, thick bushy and white-tipped.

**INDIVIDUAL HAIRS :**

**Length :**  $17,98 \pm 4,72$  mm

**Colour :** Yellow brown banded black or grey based (3).

**Cross-sections :***Guard hairs -*

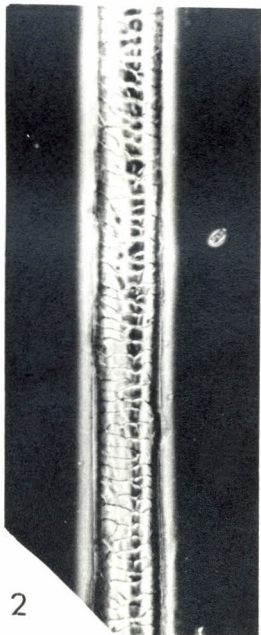
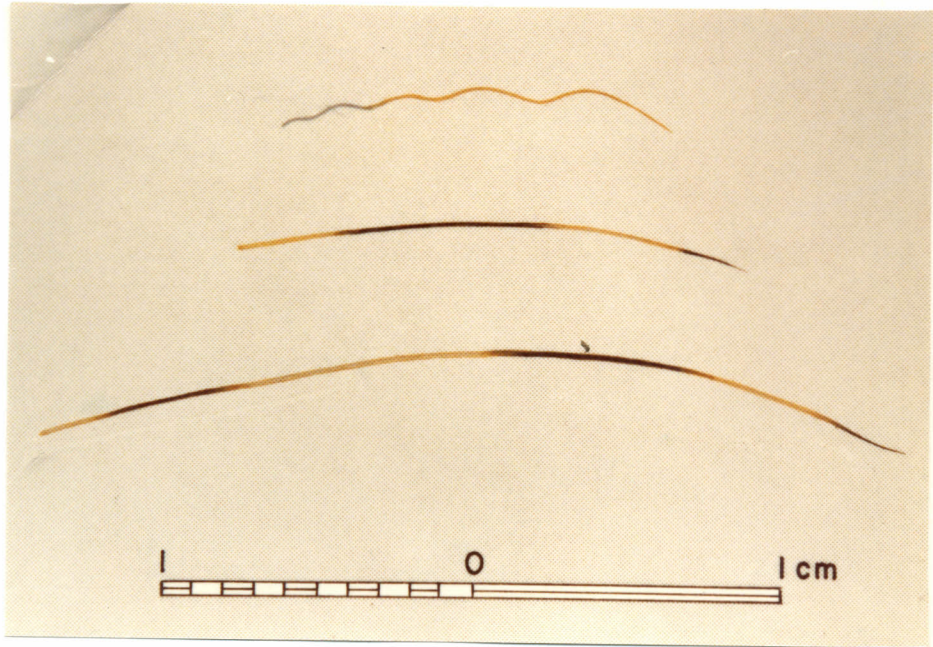
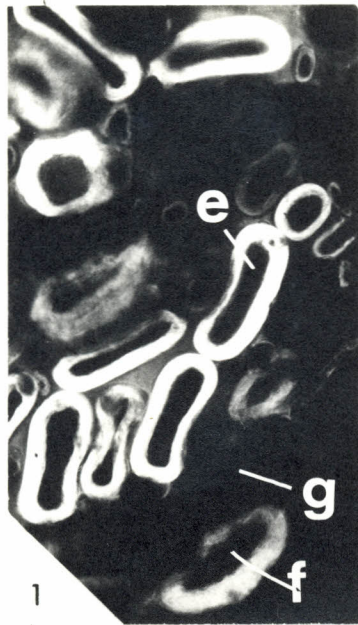
Concavo-convex with medium medulla (1e), ovals medium and large medulla (1f) and (1g).

*Underfur -*

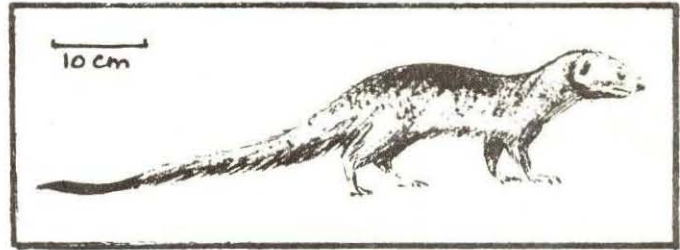
Circles with large and medium medulla. Ovals medium medulla.

**Cuticular scale patterns :**

Neat waved mosaic pattern, one or two scales across width (2).  
Scale margins: smooth. Distance apart of scales: near.



# SLENDER MONGOOSE



Family:

VIVERRIDAE



*Galerella sanguinea*

(Rüppell, 1835)

Slender Mongoose

## DISTRIBUTION:

Throughout southern African sub-region except Namib coastal strip and parts of Cape Province.

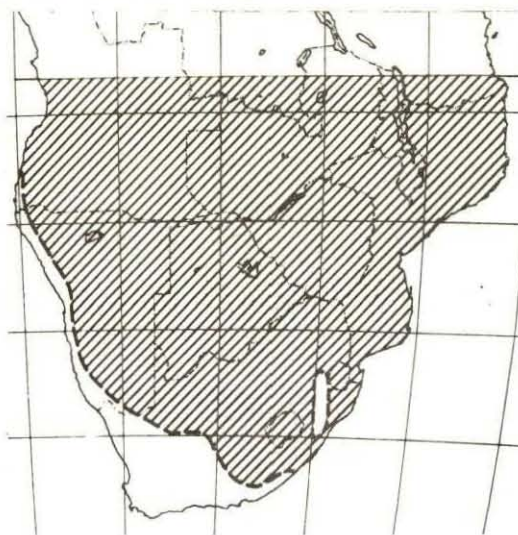
## HABITAT:

Diverse from desert country to dense forest.

## HABITS:

Diurnal. Terrestrial but can climb trees. (Genus as a whole has all-purpose dentition).

Diet: rodents, birds eggs, reptiles and insects and vegetable matter and fruits. Good killers.



---

## HAIR

### GENERAL DESCRIPTION OF FUR:

Coarse, wiry coat. General colour reddish brown at a distance. Grizzled. Head greyer, underparts buff. Tail furry and slender with blackish tip.

### INDIVIDUAL HAIRS:

Length : 20,29  $\pm$  4,55 mm

Colour : Yellow brown banded sepia, merging grey (3).

### Cross-sections:

#### *Guard hairs -*

Ovals medium and large medulla (lh) and (li). Reddish colour under microscope, distinctive.

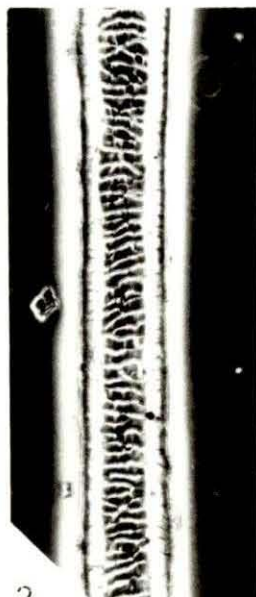
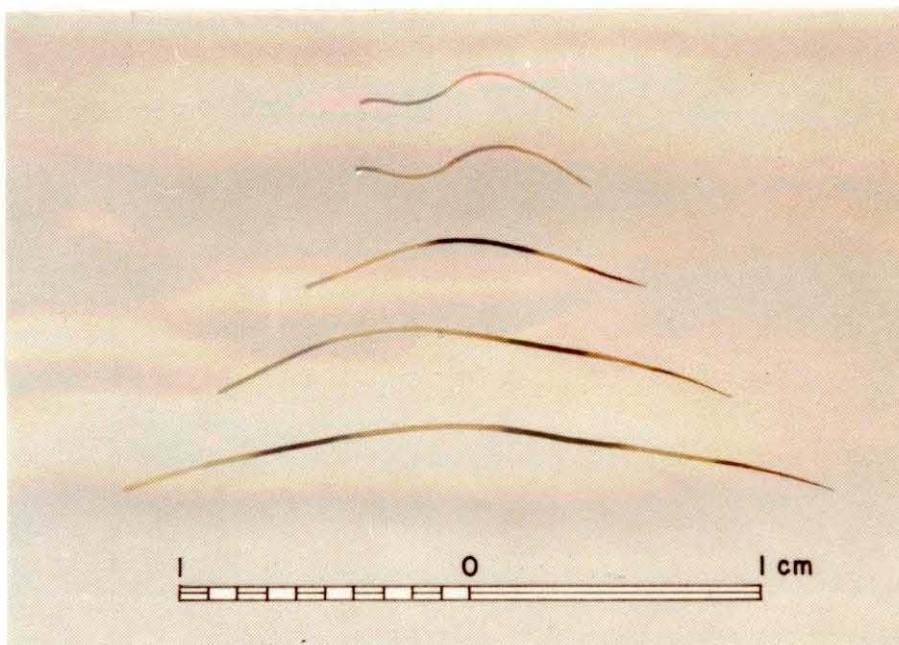
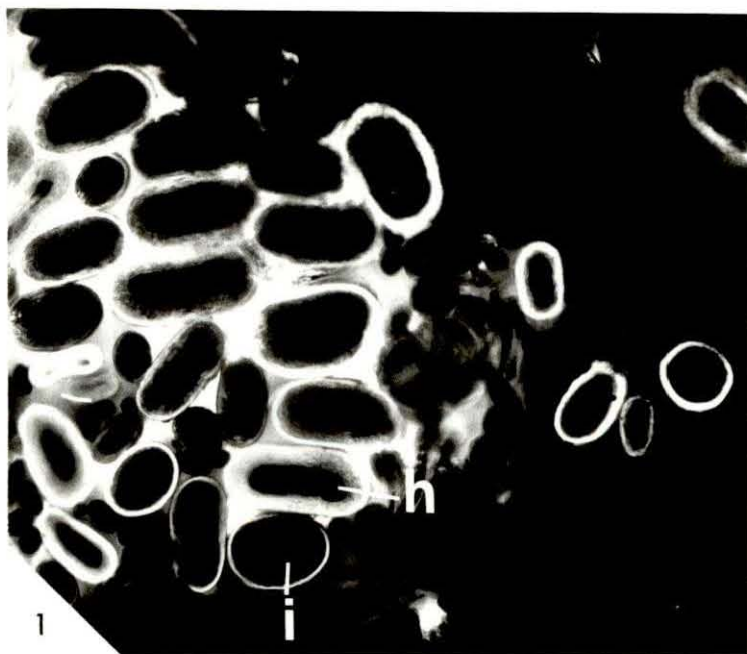
#### *Underfur -*

Circles large and medium medulla.  
Concavo-convex medium medulla.

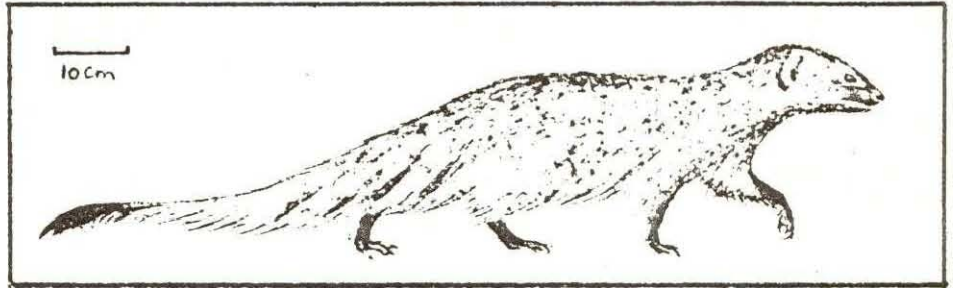
### Cuticular scale patterns:

Regular waved mosaic. One or two scales across width (2). Scale margins: smooth/slightly crenate becoming more so towards tip. Distance apart of scale margins: near.





# EGYPTIAN MONGOOSE



Family: VIVERRIDAE

*Herpestes ichneumon*  
(Linnaeus, 1758)

## DISTRIBUTION:

Natal, Swaziland, parts of Cape Province, Mozambique, northern Rhodesia, Botswana and Namibia.

## HABITAT:

Savannah, chiefly well wooded and near water.

## HABITS:

Diurnal. Lives singly or in pairs or family groups. Terrestrial. Lives in burrows or crevices between rocks. Diet: diverse, but mainly rodents, game birds, reptiles, crabs and fish.

### Egyptian Mongoose



---

## HAIR

### GENERAL DESCRIPTION OF FUR:

Uniform grizzly coat of fairly long and coarse hair. Upperparts speckled black and white, woolly underfur, yellowish buffy. Sides lighter. Underparts partly bare. Tail long and slender with black tassel at tip.

### INDIVIDUAL HAIRS:

Length:  $21,08 \pm 2,4$  mm

Colour: Black or grey, banded white. Black or black tipped white (3).

### Cross-sections:

#### Guard hairs -

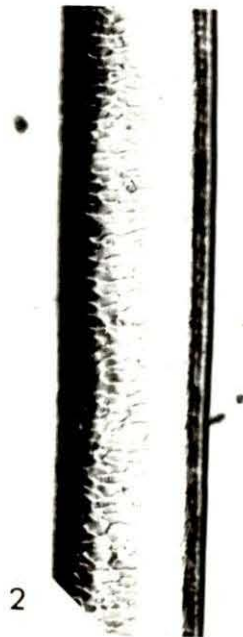
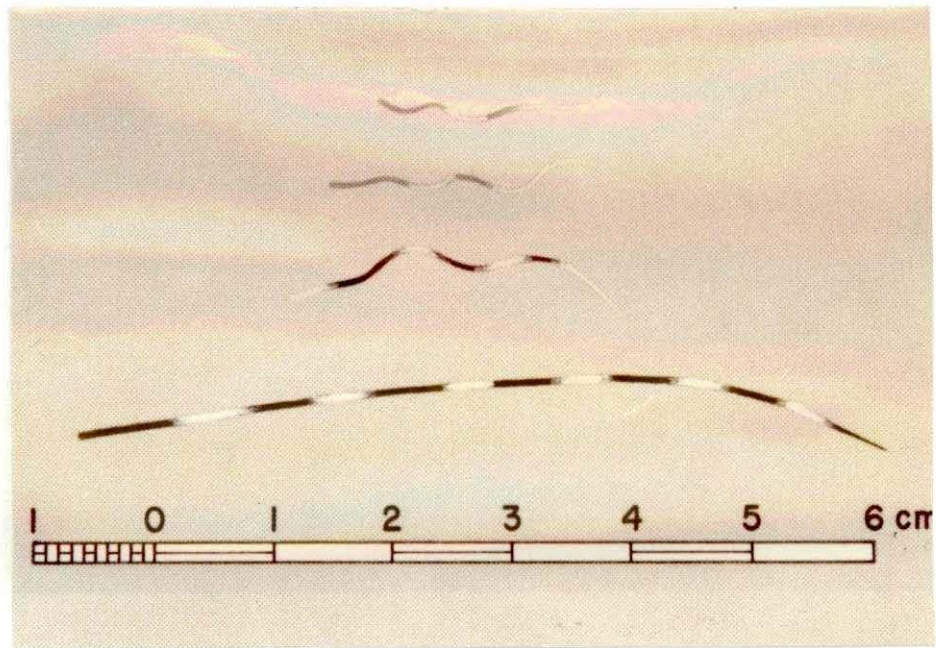
Large oval hairs with medium and large medulla (1j) and (1k).

#### Underfur -

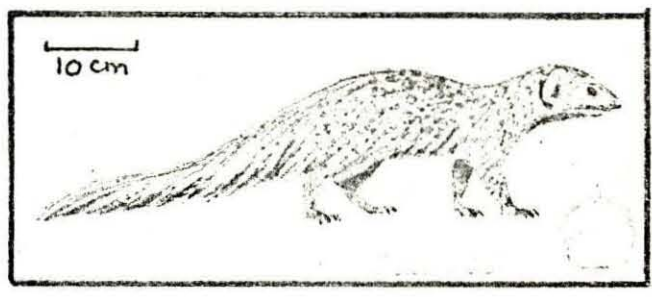
Ovals and circles.

### Cuticular scale patterns:

Irregular waved mosaic (2). Scale margins: rippled crenate. Distance apart of scales: near.



# CAPE GREY MONGOOSE



## Cape Grey Mongoose

**DISTRIBUTION:**

Namibia, except Namib coastal strip, Cape Province, southern Orange Free State.

**HABITAT:**

Savannah, and mediterranean evergreen trees and shrub.

**HABITS:**

Diurnal. Lives singly or in pairs, terrestrial but may climb trees. Diet: rodents, ground squirrels, juvenile hares, snakes, birds, eggs and insects.

**HAIR****GENERAL DESCRIPTION OF FUR:**

Rather long loose coat, general colour speckled grey. Face darker, underparts lighter, and less speckled than above. Feet uniform dark brown. Tail long, bushy and speckled.

**INDIVIDUAL HAIRS:**

Length :  $22,1 \pm 3,25$  mm

Colour : Black banded white or grey banded white (5).

**Cross-sections:***Guard hairs -*

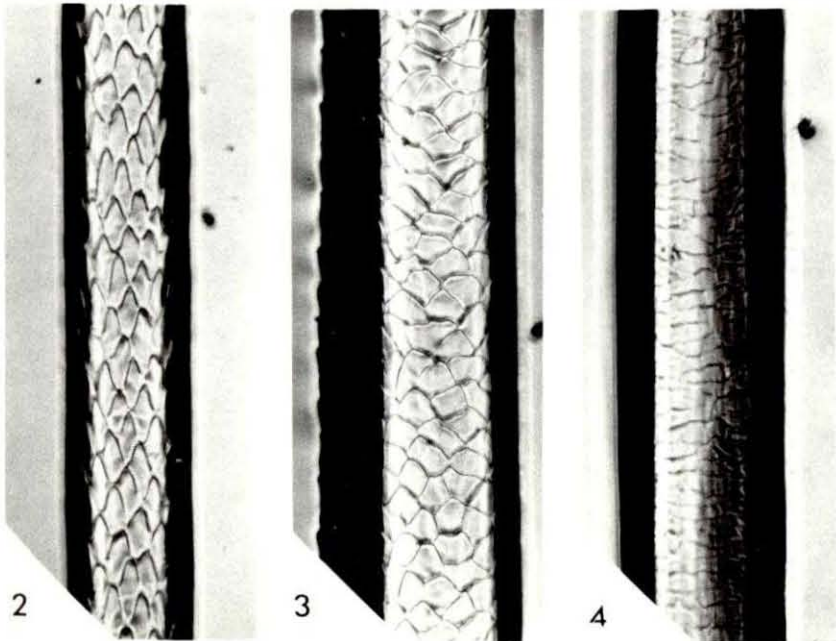
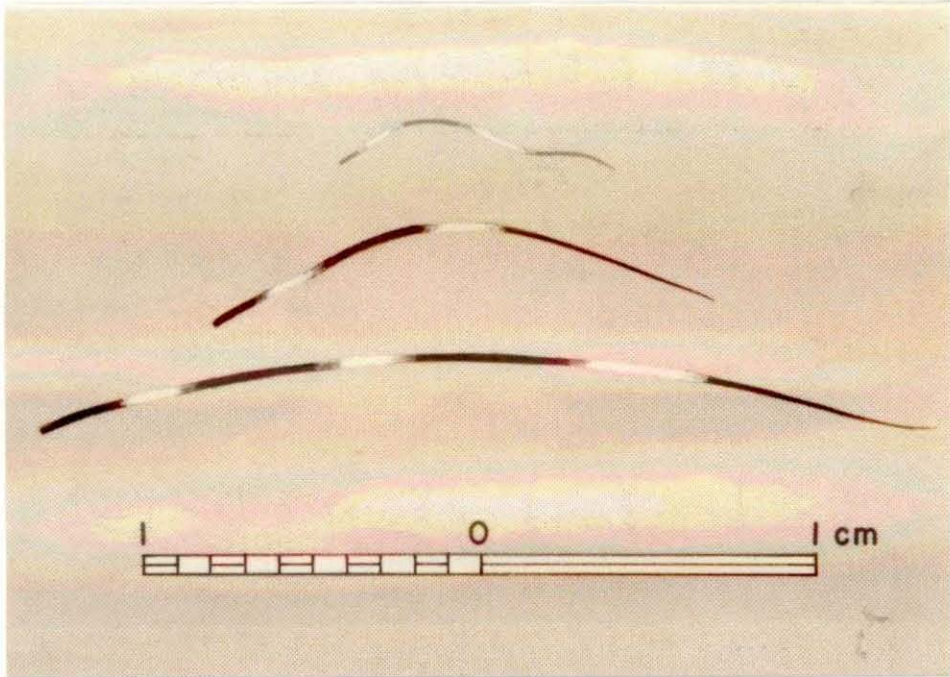
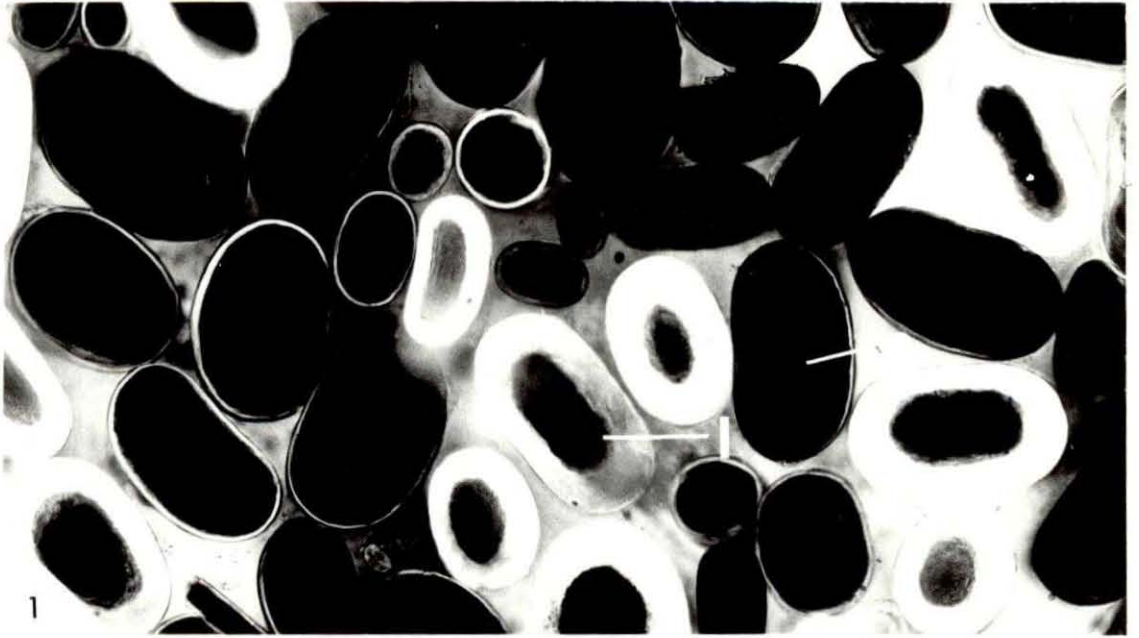
Ovals, medium and large medulla (1l) and (1m). Black and white colour distinctive (cf *Mungos mungo*).

*Underfur -*

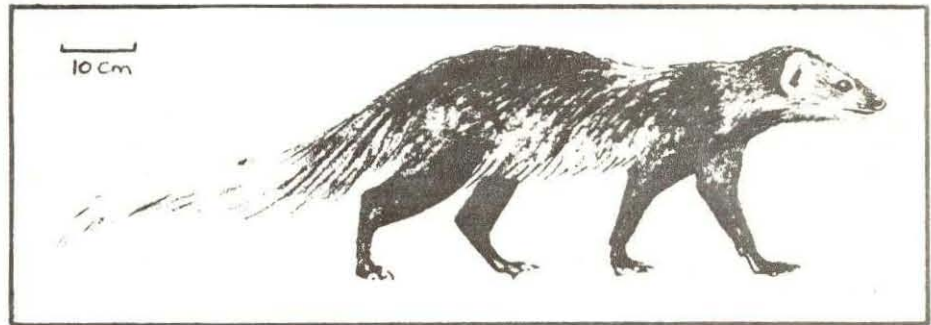
Ovals, medium and large medulla. Circles, large medulla.

**Cuticular scale patterns:**

Base, diamond petal almost pectinate (2). Shaft typical petal (3), tip waved mosaic (4). Scale margin smooth slightly crenate in waved mosaic. Distance apart of scales: distant in petal, near in waved mosaic (cf *Mungos mungo*).



# WHITE-TAILED MONGOOSE





**DISTRIBUTION :**

Cape Province, Orange Free State, Lesotho, Swaziland, Transvaal, Mozambique, Rhodesia, northern Botswana and Namibia.

**HABITAT :**

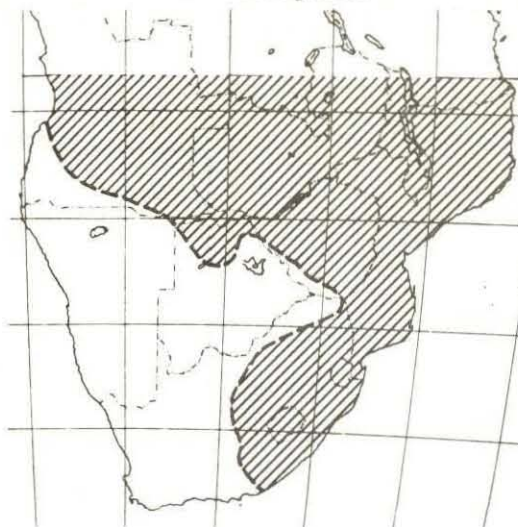
Savannah dense bush, particularly near water.

**HABITS :**

Nocturnal, partly diurnal, usually solitary. Terrestrial, partly arboreal.

Diet: frogs, rodents, reptiles, insects, grubs, eggs.

White-tailed Mongoose




---

**HAIR**
**GENERAL DESCRIPTION OF FUR :**

Coarse shaggy coat, general colour grizzled grey or brownish grey with long black hairs in varying amounts but especially on the hind parts. Underparts and limbs usually dark black or brown. Tail bushy but tapering, dark at base then white or bushy white.

**INDIVIDUAL HAIRS :**

**Length :**  $41,1 \pm 3,1$  mm

**Colour :** Black. Black/sepia banded white. Grey banded white. Grey, white tipped (3).

**Cross-sections :****Guard hairs -**

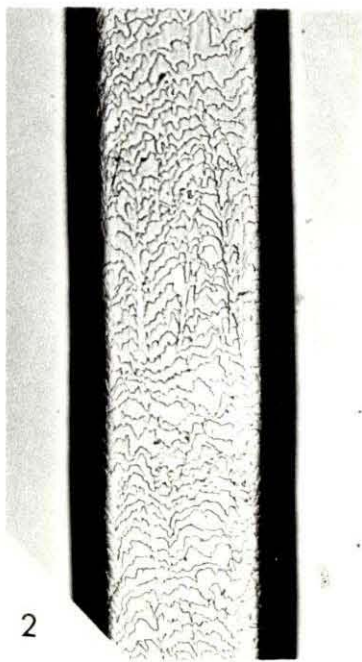
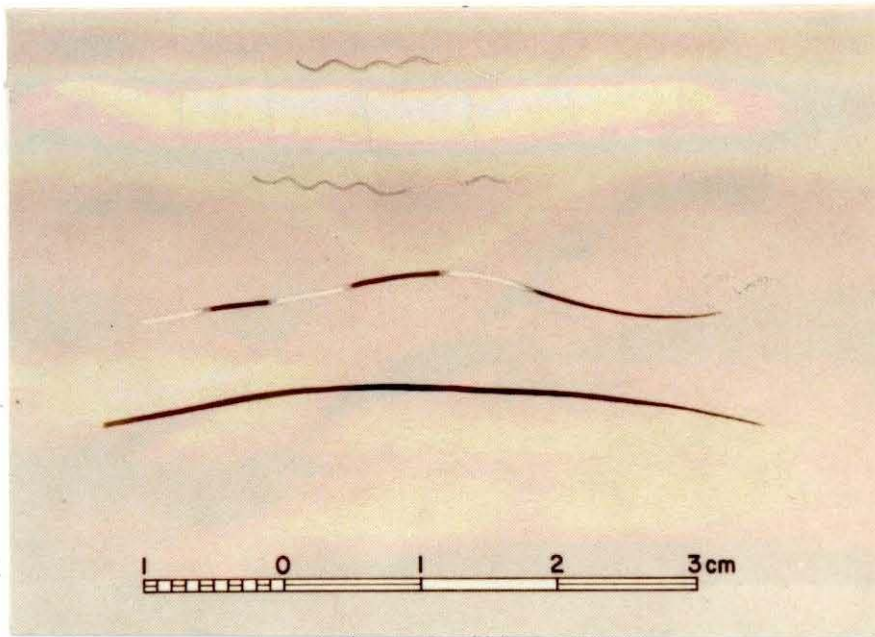
Large ovals with reddish pigment in cortex (ln). Some with white cortex (lo), medium medulla. (Some black hairs large medulla).

**Underfur -**

Ovals, not much underfur.

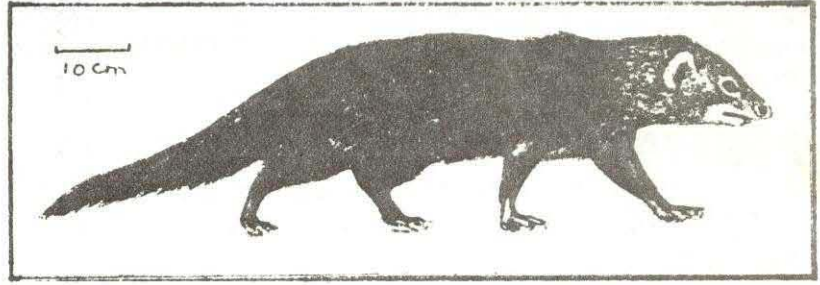
**Cuticular scale patterns :**

Waved mosaic along entire length (2). Scale margins: crenated. Distance apart of scales: near.





# WATER MONGOOSE



**DISTRIBUTION:**

Cape Province, Orange Free State, Lesotho, Natal, Swaziland, Mozambique, Transvaal, Rhodesia, northern Botswana and north-eastern Namibia.

**HABITAT:**

Savannah and forest. Dense bush and marsh vegetation, usually near water.

**HABITS:**

Nocturnal. Solitary. Semi-amphibious, excellent swimmer. Diet: eggs. Also eats rodents, reptiles and birds (robust premolars to assist in breaking crabs).

Water Mongoose



---

**HAIR****GENERAL DESCRIPTION OF FUR:**

Coat coarse, shaggy, dark brown sometimes almost blackish, but grizzled appearance of brownish-black and ochraceous at close view. Underparts lighter. Limbs darker. Tail, short thick bushy at base tapering, same colour as body.

**INDIVIDUAL HAIRS:**

Length :  $11,6 \pm 3,6$  mm

Colour : Sepia or brown, sparsely banded buff. Dark or light tipped (3).

**Cross-sections:***Guard hairs* -

Colour in cross-section 'oranges', 'yellows', 'whites'.

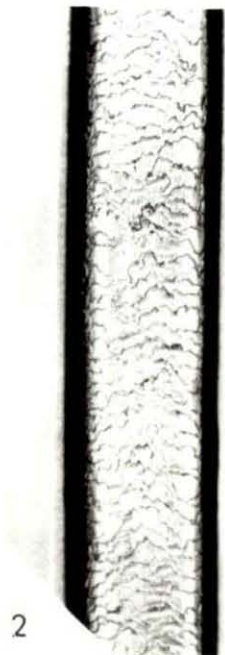
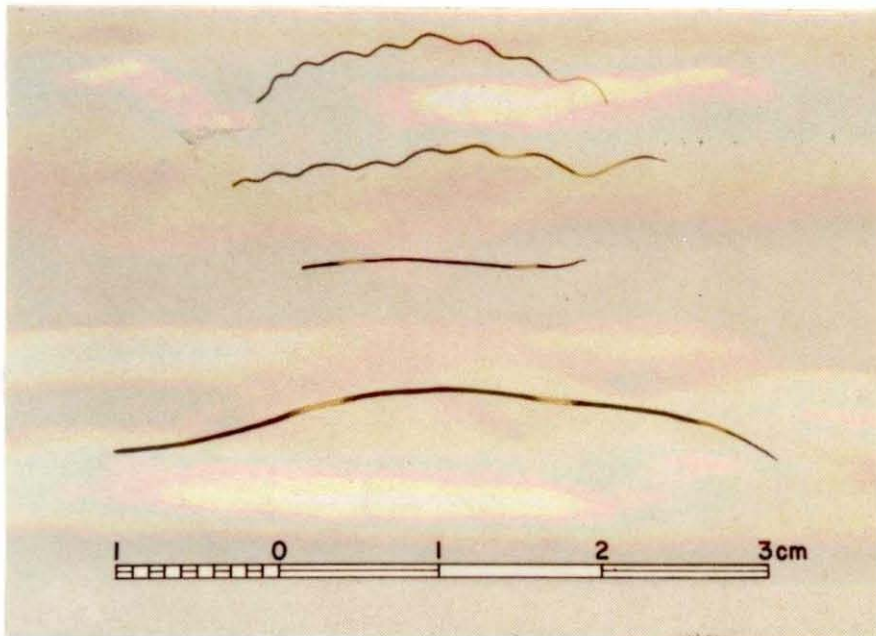
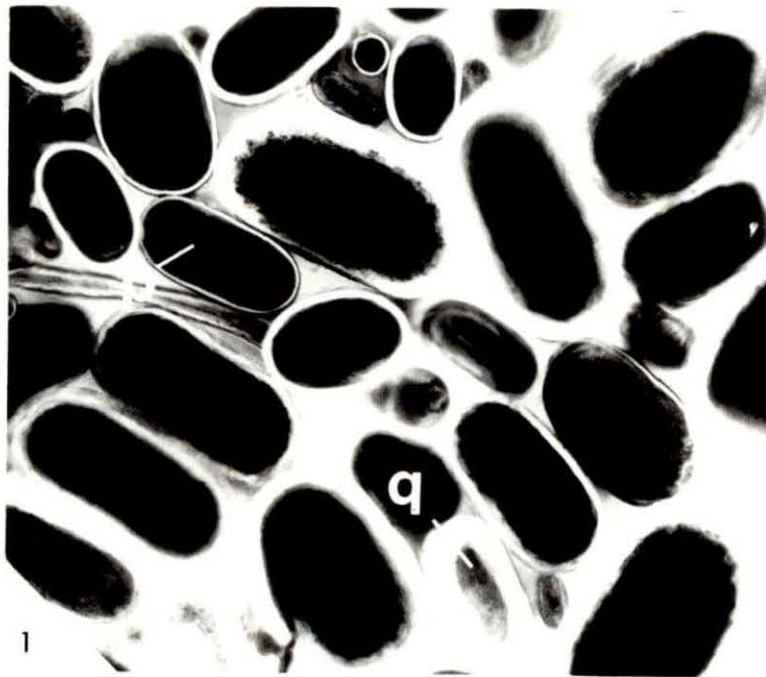
The 'orange sections have small medulla. Ovals and oblongs with large (lp) or medium (lq) medulla.

*Underfur* -

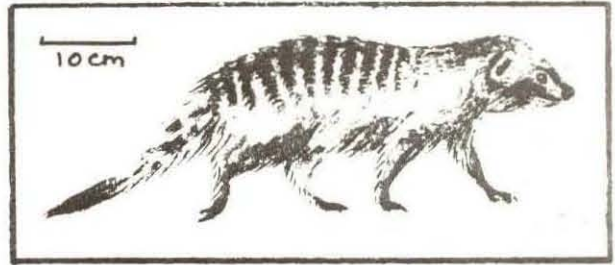
Oval, large and medium medulla.

**Cuticular scale patterns:**

Irregular waved mosaic (2), pectinate towards base, 2 or 3 scales across width of hair. Scale margins: rippled crenate, or rippled or just crenate. Distance apart of scales: near.



# BANDED MONGOOSE



**DISTRIBUTION :**

Natal, Transvaal, Mozambique, parts of Rhodesia, Botswana and Namibia.

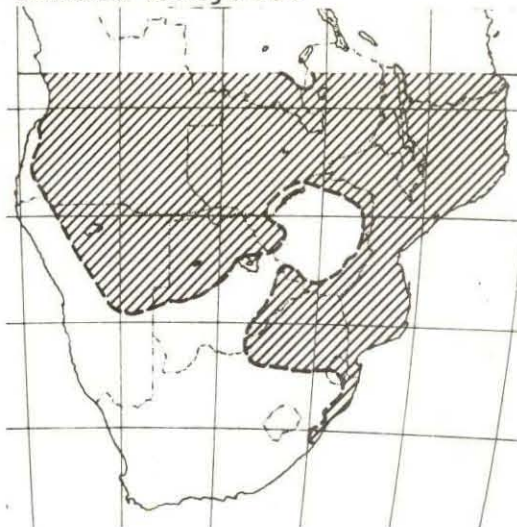
**HABITAT :**

Dry savannah and woodlands, never dense forest. Usually not far from water.

**HABITS :**

Mostly diurnal. Very sociable, lives in packs, makes warrens. Diet: insects, grubs and larvae, also frogs, reptiles, birds, eggs, rodents, molluscs, fruit and bulbs.

Banded Mongoose




---

**HAIR**
**GENERAL DESCRIPTION OF FUR :**

Coarse wiry coat, continuous striped pattern. Ground colour brownish grey covered with conspicuous transverse dark brown bands alternating with light bands of same width. Tail bushy at base, tapering to blackish tip.

**INDIVIDUAL HAIRS :**

**Length :**  $17,94 \pm 1,47$  mm

**Colour :**

Sepia banded tawny to buff, or tawny to buff and white. Sepia banded rufous, some with white base(3).

**Cross-sections :****Guard hairs -**

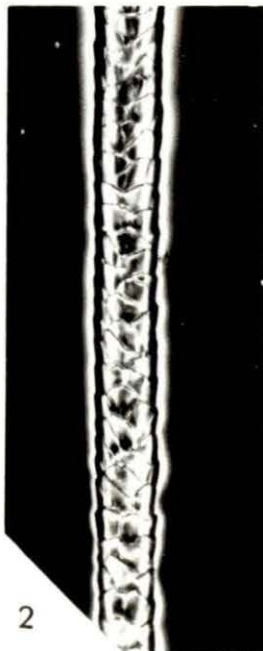
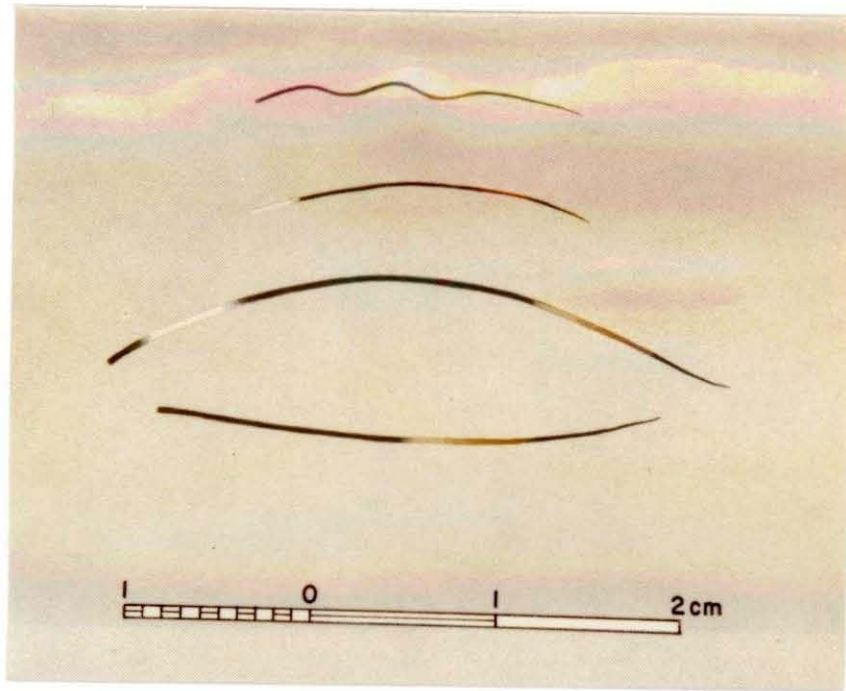
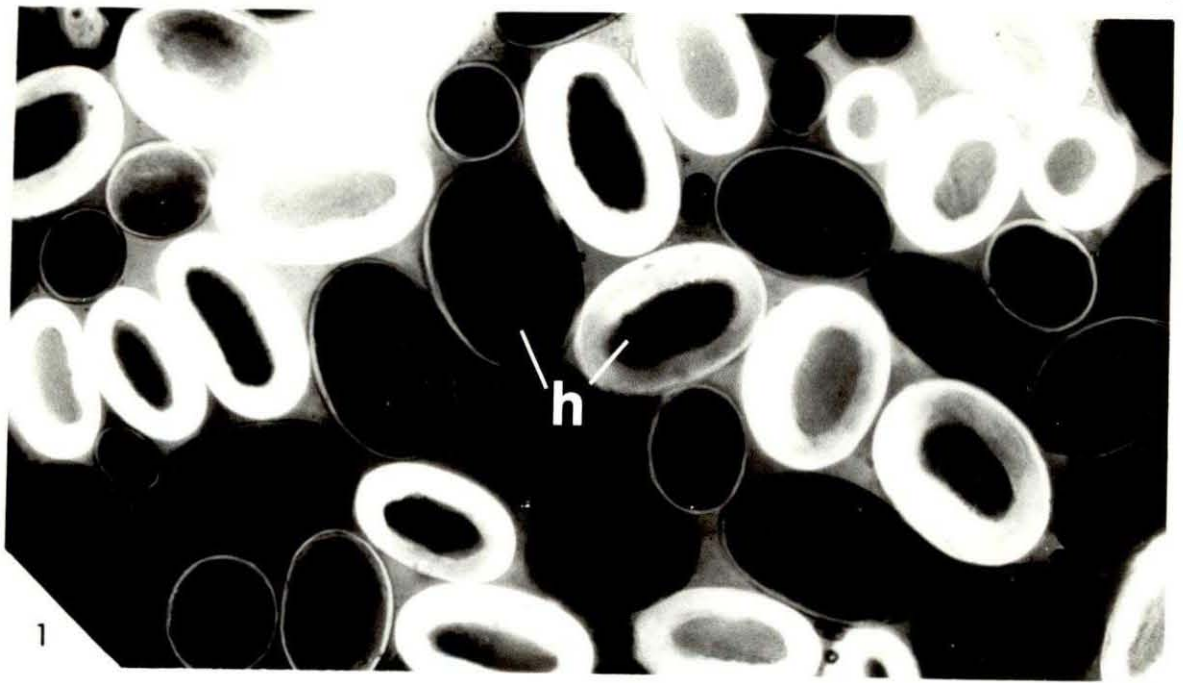
Black and white strongly contrasted. Ovals, medium and large medulla (1h). (cf *Herpestes pulverulentus*).

**Underfur -**

Circles, medium and large medulla.

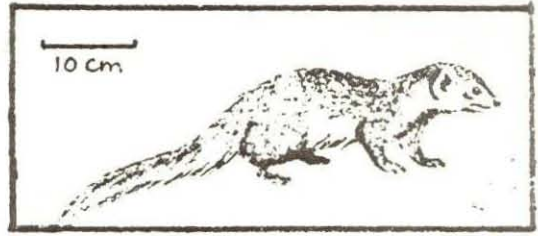
**Cuticular scale patterns :**

Coronal at base, petal along shaft (2), waved mosaic towards tip. Scale margins: smooth but rippled in waved mosaic. Distance apart of scales: distant in petal, near in waved mosaic.





# DWARF MONGOOSE



## Dwarf Mongoose

**DISTRIBUTION:**

Northern Natal and Swaziland,  
Mozambique, Transvaal, Rhodesia,  
northern Botswana and Namibia.

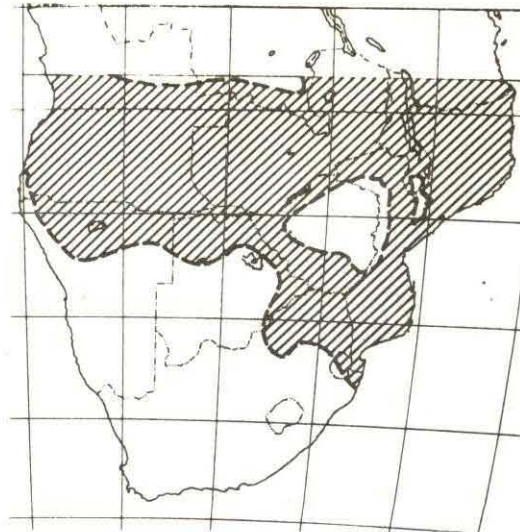
**HABITAT:**

Dry savannah and woodland.

**HABITS:**

Diurnal (not especially shy). Gregarious, living in small colonies. Takes refuge in hollow trees or rock crevices or anthills. Nomadic, young born in holes.

Diet: mainly insects, larvae, spiders but also small rodents, lizards, and eggs and young birds.

**HAIR****GENERAL DESCRIPTION OF FUR:**

Uniform speckled brown or reddish hairs ringed brownish, whitish, appearing dark brown. Underparts lighter. Feet dark brown. Tail short, tapering, not bushy.

**INDIVIDUAL HAIRS:**

Length :  $11,74 \pm 2,79$  mm

Colour : Black banded buffy white. Brown, tipped buff (3).

**Cross-sections:***Guard hairs -*

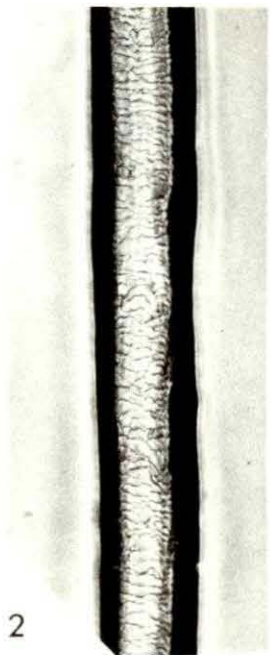
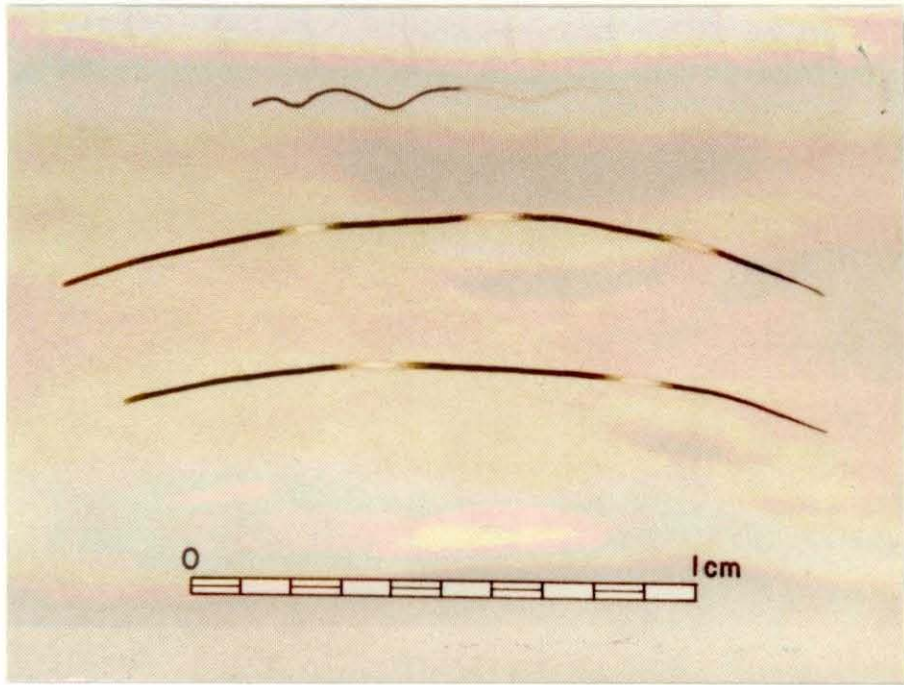
A lot of black seen in section, but whites and yellows as well. Ovals medium medulla (1r).

*Underfur -*

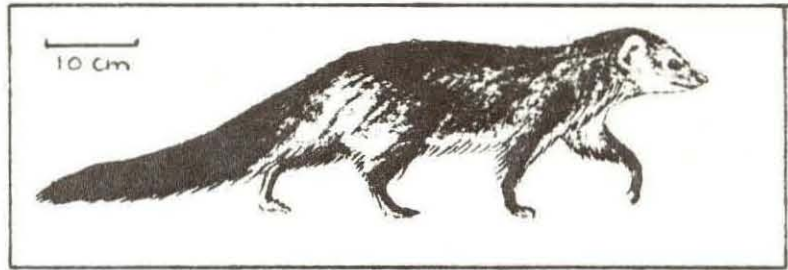
Oval with medium and large medulla.

**Cuticular scale patterns:**

Waved mosaic (2) (coronal in base) one or two scales across width of hair. Scale margins: rippled. Distance apart of scales: near.



# BUSHY-TAILED MONGOOSE



**DISTRIBUTION:**

Mozambique, north-eastern  
Rhodesia.

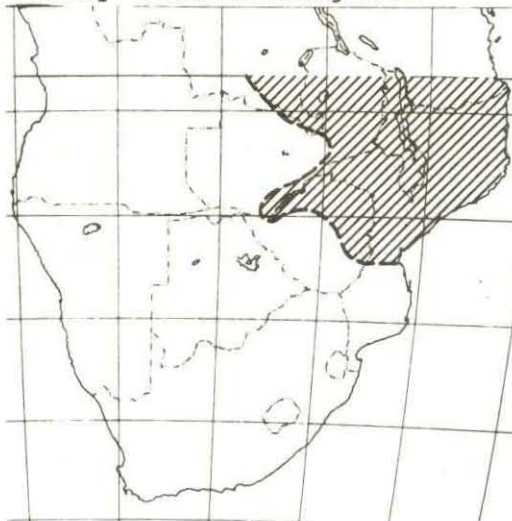
**HABITAT:**

Associated with rocky outcrops.

**HABITS:**

Rare. Little known of habits. Reputed to take refuge in hollow trees.  
Diet: insects (termites), and rodents and possibly aquatic animals (crabs), and fruit.

Bushy-tailed Mongoose



---

**HAIR****GENERAL DESCRIPTION OF FUR:**

Long coarse coat, upper parts very dark, blackish and dull underfur obscured by numerous black and white banded hairs. Underparts lighter. Limbs black. Very bushy black tail.

**INDIVIDUAL HAIRS:**

Length:  $20,1 \pm 3,8$  mm

Colour: Sepia banded white. Sepia banded white and grey.  
Grey, beige tipped (3).

**Cross-sections:***Guard hairs -*

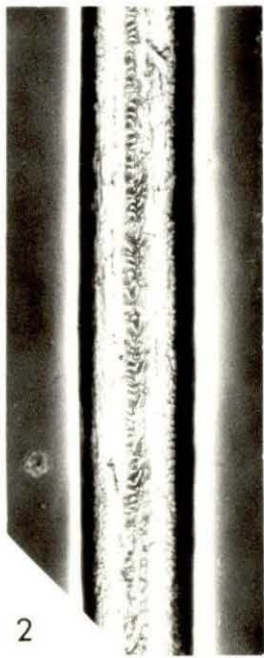
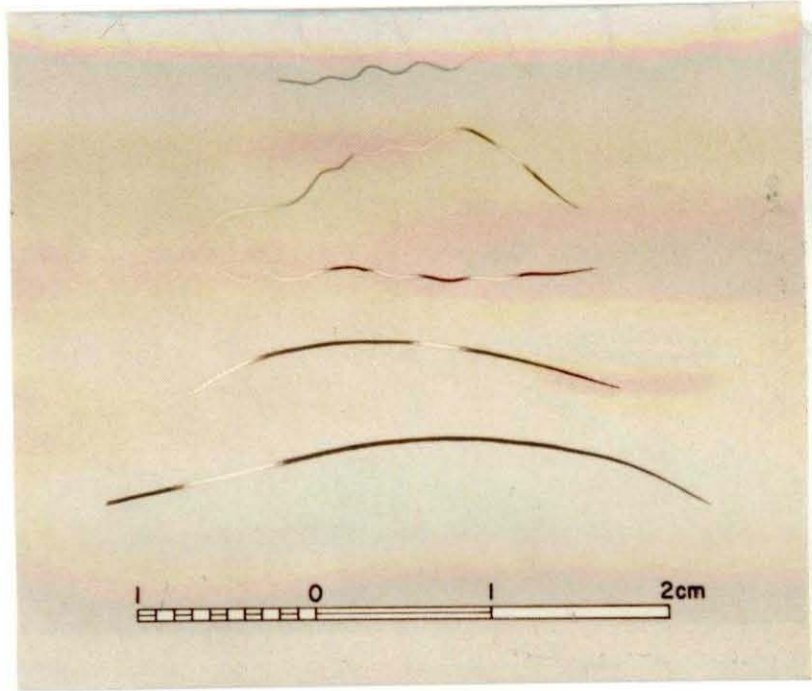
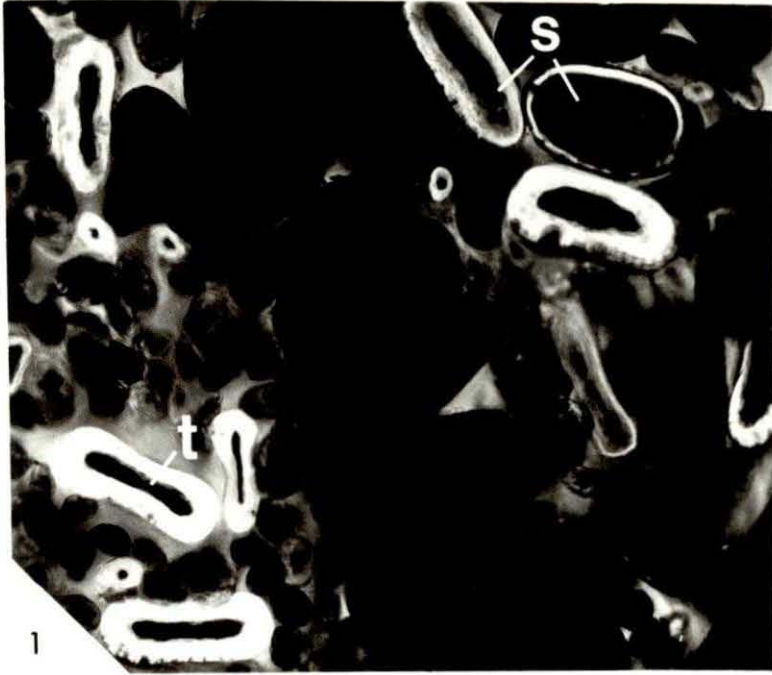
Oval large and medium medulla (ls)  
Dumb-bell, medium medulla (lt)

*Underfur -*

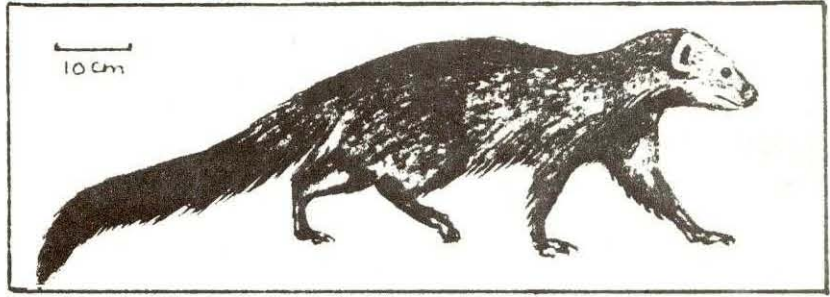
Numerous oblong hairs in tufts small medulla or oval with medium medulla.

**Cuticular scale patterns:**

Waved mosaic on shaft and tip (2). Coronal at base. Scale margins: smooth in basal part, rippled crenate in waved mosaic. Distance apart of scales: near.



# MELLER'S MONGOOSE



Family:

VIVERRIDAE



*Rhynchogale melleri*  
(Gray, 1865)

## DISTRIBUTION:

Parts of Transvaal, Swaziland,  
Mozambique and Rhodesia.

## HABITAT:

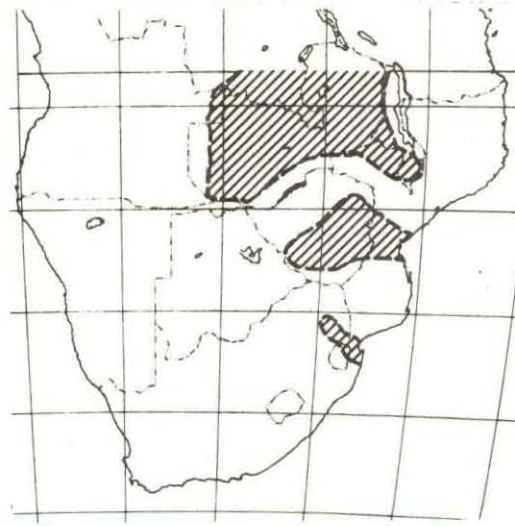
Savannah

## HABITS:

Nocturnal and solitary. Terrestrial. Young born in holes in ground.

Diet: Predominantly and nearly exclusively a termite eater.

Meller's Mongoose



---

## HAIR

### GENERAL DESCRIPTION OF FUR:

Long, coarse fur. Crest formed by hairs growing forward below ear to lower shoulder. Grizzled brown, darker on back, greyer and lighter on head and underparts. Legs darker. Tail bushy long, black at tip.

### INDIVIDUAL HAIRS:

Length:  $12,1 \pm 3,2$  mm

Colour: Sepia banded rufous or white. Brown-grey (3).

### Cross-sections:

#### *Guard hairs -*

Ovals and circles with large medulla (lu). A lot of black seen in cross-section.

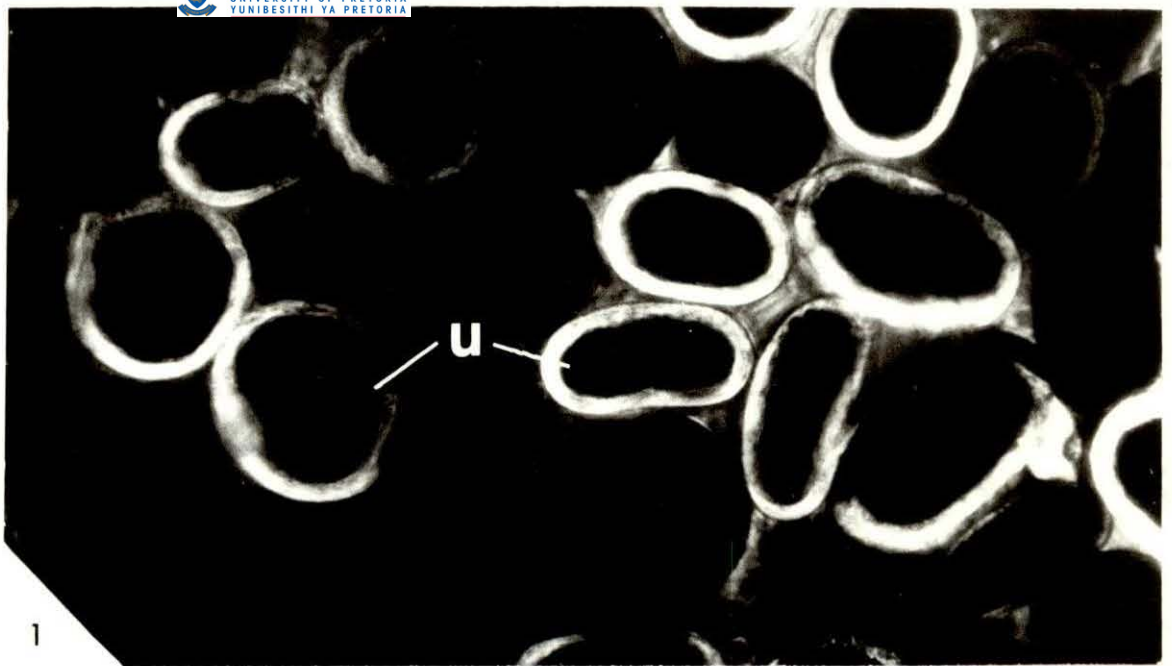
#### *Underfur -*

Circles and ovals medium medulla.

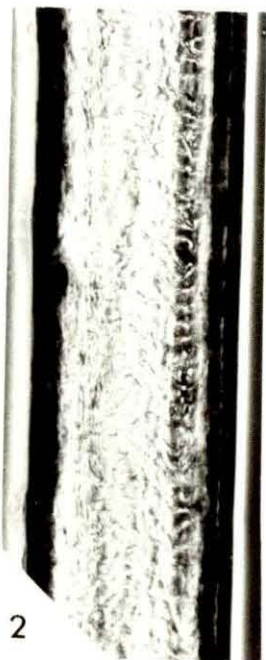
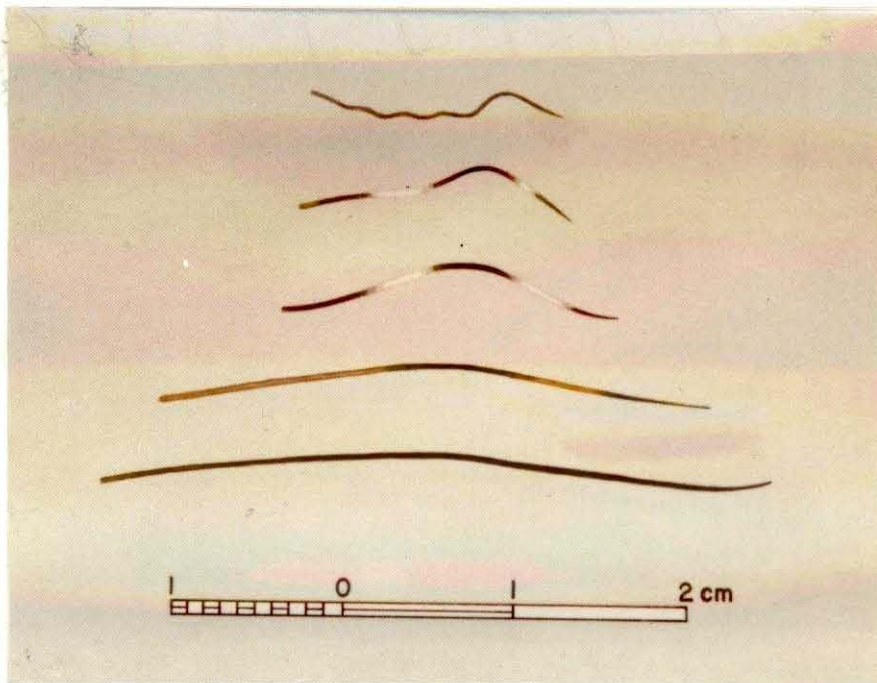
### Cuticular scale patterns:

Waved mosaic (2). Scale margins: rippled crenate.  
Distance apart of scales: near.





1



2