

detail f-1 1 : 5

65 self formed double flashing system to be connected with self-tapping screws and neoprene washer

pop-rivet connecting lipped channel and bottom flashing

Bitumen impregnated torch-on waterproofing membrane on 100 low density composite concrete slab to fall min 1% strictly to manufacturer's specifications

100 no-fines low-density rc slab (900kg/m³)

175 x 65 x 20 x 2.5 gms lipped channels mechanically connected to gms I-beam with 60 x 60 equal angle

1000 x 4000 pre-drilled and fixed composite panel consisting of 14,0 x 22 tongue and groove x 225 gms (inside) and 12,7 gms (outside) cladding fixed to gms lipped channels with self-tapping screws

(2) 225 x 75 x 20 x 3,5 gms lipped channels welded back to back and connected to I-beam with unequal angle sleeve as per structural engineer

224 x 146 x 30kg/m Galvanized

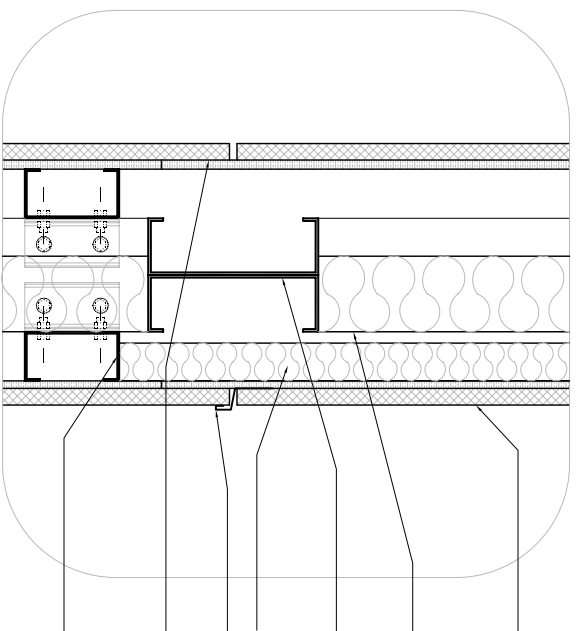
truss (or I-beam) (reference)

50 aerocell acoustic absorption and thermal insulation

100 mineral wool baffle

125 x 86 x 20 x 2,5 gms lipped channel engaging mechanically connected to 150 x 75 x 20 x 3 vertical front to front welded channels with 60 x 120 unequal angle and M10 bolts

1000 x 4000 pre-drilled and fixed composite panel consisting of 14,0 x 22 tongue and groove plate with 12,7 gms (inside) and 12,7 gms (outside) cladding fixed to 225 x 75 x 20 x 3,5 gms lipped channels with self-tapping screws



detail f-2 1 : 5

1000 x 4000 pre-drilled and fixed composite panel consisting of 14,0 x 22 tongue and groove eucalyptus diverstator (outside) and 12,7 gypsum board (inside) cladding with self-tapping screws

100 mineral wool baffle

(2) 225 x 75 x 20 x 3,5 gms lipped channels welded back to back and connected to I-beam with unequal angle sleeve as per structural engineer

50 aerocell acoustic absorption and thermal insulation gms flashing @ connection of composite cladding installed during pre-manufacturing process

1000 x 4000 pre-drilled and fixed composite panel consisting of 14,0 x 22 tongue and groove plate with 12,7 gms (inside) and 12,7 gms (outside) cladding fixed to 225 x 75 x 20 x 3,5 gms lipped channels with self-tapping screws

125 x 86 x 20 x 2,5 gms lipped channel engaging mechanically connected to 150 x 75 x 20 x 3 vertical front to front welded gms lipped channels @ 3520 vertical channels @ 3520 unequal angle and M10 bolts