

10 clear laminated structural glazing to be separated from frame with neoprene spacer and sealed with appropriate polymer sealant

purpose made gms window frame according to window schedule to bottom and top of lipped channel lip

254 * 146 * 204g/m Galvanized Mild Steel I-Beam (Vierowinkel Truss)

pre-finished and manufactured composite panel consisting of 140 x 22 tongue and groove Eucalyptus diversicolor and 127 gypsum board cladding fixed to gms window frame with self tapping screws

purpose made gms window frame according to window schedule to be bolted with gms M6 bolts to flange of gms I-profile beam

10 laminated structural glazing to be separated from neoprene spacer and sealed with appropriate polymer sealant

6mm glazing to be separated from frame with neoprene spacer and sealed with appropriate polymer sealant

detail a-6

6mm glazing to be separated from frame with neoprene spacer and sealed with appropriate polymer sealant

10 clear laminated structural glazing to be separated from frame with neoprene spacer and sealed with appropriate polymer sealant

purpose made eucalyptus diversicolor window frame

purpose made gms window frame according to window schedule to be channel with gms 70 bolts to lipped channel

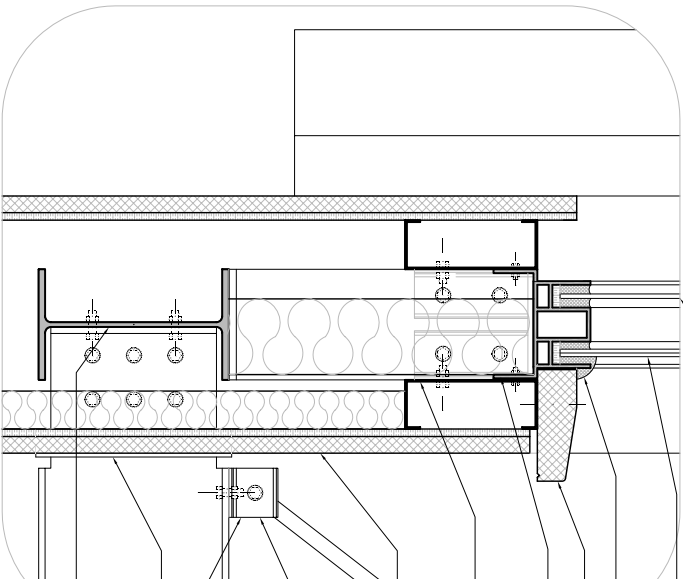
165 x 26 x 20 x 2,5 gms lipped channel nesting connected to 254 x 146 x 32 vertical I-profile @ 3500 centres with 60 x 700 unqual angle and 190 bolts

100 * 4,00 pre-finished and fixed composite panel consisting of 140 x 22 tongue and groove eucalyptus diversicolor (outside) and 127 gypsum board (inside) cladding fixed to gms lipped channels with self tapping screws

(2) 65 x 65 equal angle bracket facing back to back and spaced 16mm apart and called to I-beam flange to connect end of tension cable and I-beam

20 diameter gms tension cable as per structural engineer specifications gms 40 x 40 equal angle frame

254 * 146 * 33kg/m Galvanized Mild Steel I-Beam (Vierowinkel Truss)



detail a-7