

65 cold formed double flashing system to be connected with self-lapping screws and neoprene washer

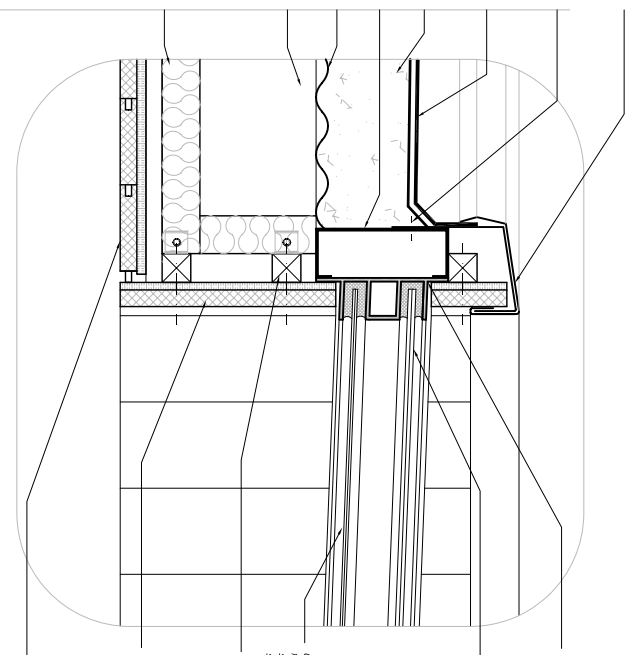
pop-out connecting lipped channel and bottom flashing

Blumar impregnated larch-on hydrophobic membrane on 100 low density composite concrete slab to full min 170 strictly to manufacturer's specifications
100 no-fines low-density rc slab (900kg/m³)

125 x 65 x 20 x 2,5 gms lipped channel frame with 60 equal gms l-beam with 60° equal angle

gms corrugated sheeting on lipped channels with self lapping screws as per specification
225 x 25 x 20 x 3,5 gms lipped channel connected to l-beam with unequal angle sleeve as per structural engineer

50 aerogel acoustic absorption and thermal insulation



purpose made gms window frame according to window schedule to be bolted with gms M6 bolts to bottom and top of lipped channel lip

10 clear laminated structural glazing to be separated from frame with neoprene spacer and sealed with appropriate polymer sealant

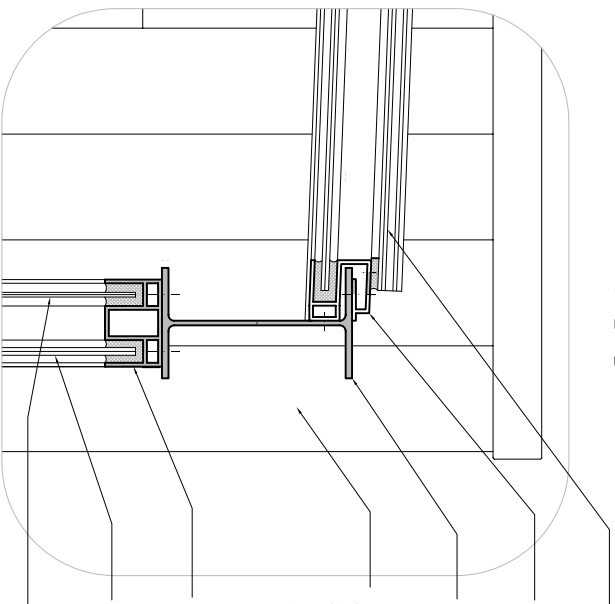
gms glazing to be separated from frame with neoprene spacer and sealed with appropriate polymer sealant

38 x 38 S4-Fine grade 5 timber nogging spanning between josts and nailed to 30 x 2,5 gms and 20 x 2,5 gms gms lipped channel with M10 gms bolts

pre-drilled and manufactured composite panel consisting of 140 x 22 tongue and groove Eucalyptus divertsolor and 127 gypsum board cladding fixed to gms lipped channels with self lapping screws

140 x 22 lmbars (lamba Bars) tongue and groove ceiling to 225 x 25 x 20 x 3,5 gms lipped channel josts with self lapping screws (22 per ceiling and lipped channel connection)

detail a-5



10 clear laminated structural glazing to be separated from frame with neoprene spacer and sealed with appropriate polymer sealant

purpose made gms window frame according to window schedule to be bolted with gms M6 bolts to bottom and top of lipped channel lip

254 x 146 x 30kg/m Galvanized Mild Steel l-beam (Weathered Truss)

pre-drilled and manufactured composite panel consisting of 140 x 22 tongue and groove Eucalyptus divertsolor and 127 gypsum board cladding fixed to gms lipped channels with self lapping screws

purpose made gms window frame according to window schedule to be bolted with gms M6 bolts to flange of gms I-profile beam

10 laminated structural glazing to neoprene spacer and sealed with appropriate polymer sealant

gms glazing to be separated from frame with neoprene spacer and sealed with appropriate polymer sealant

detail a-6