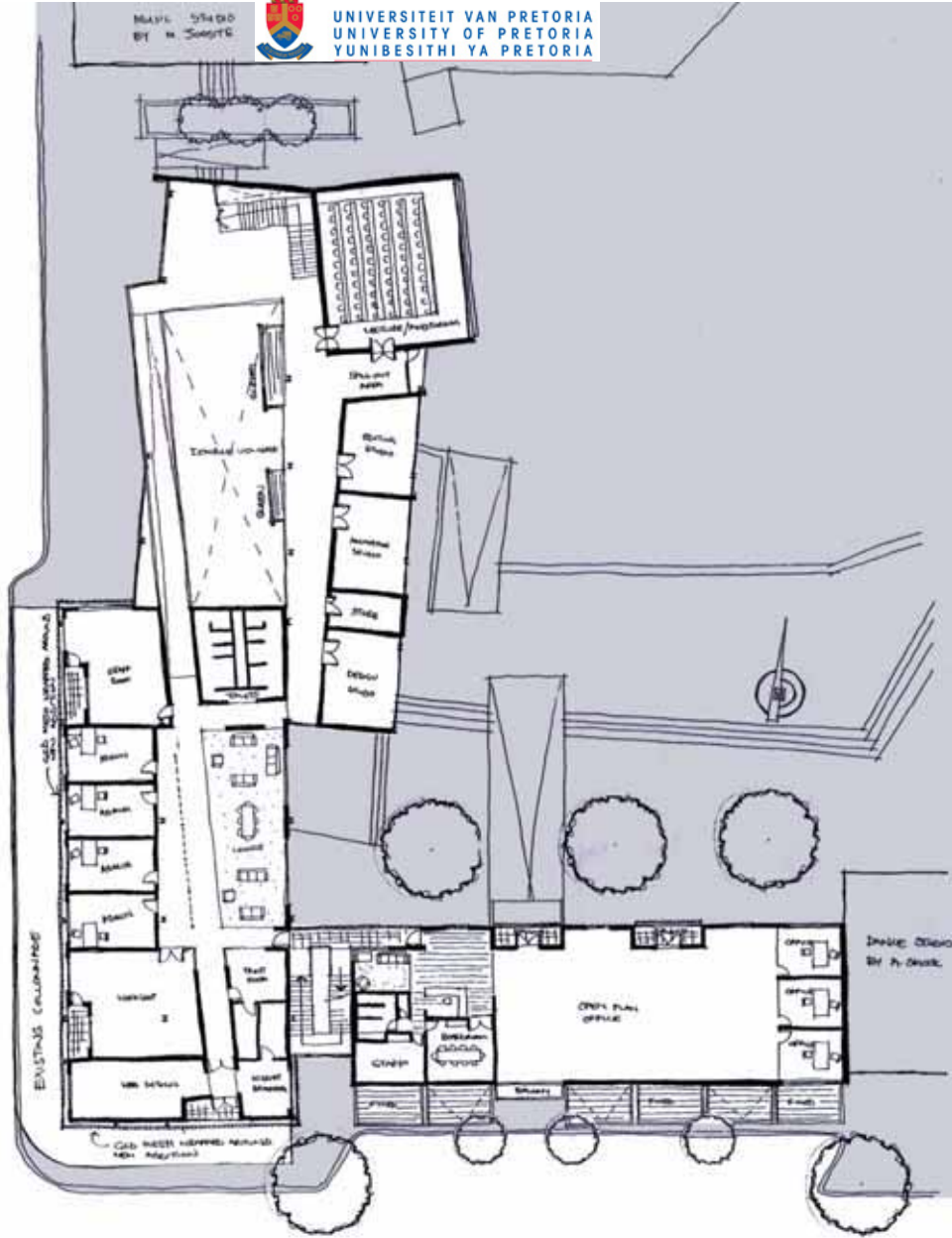


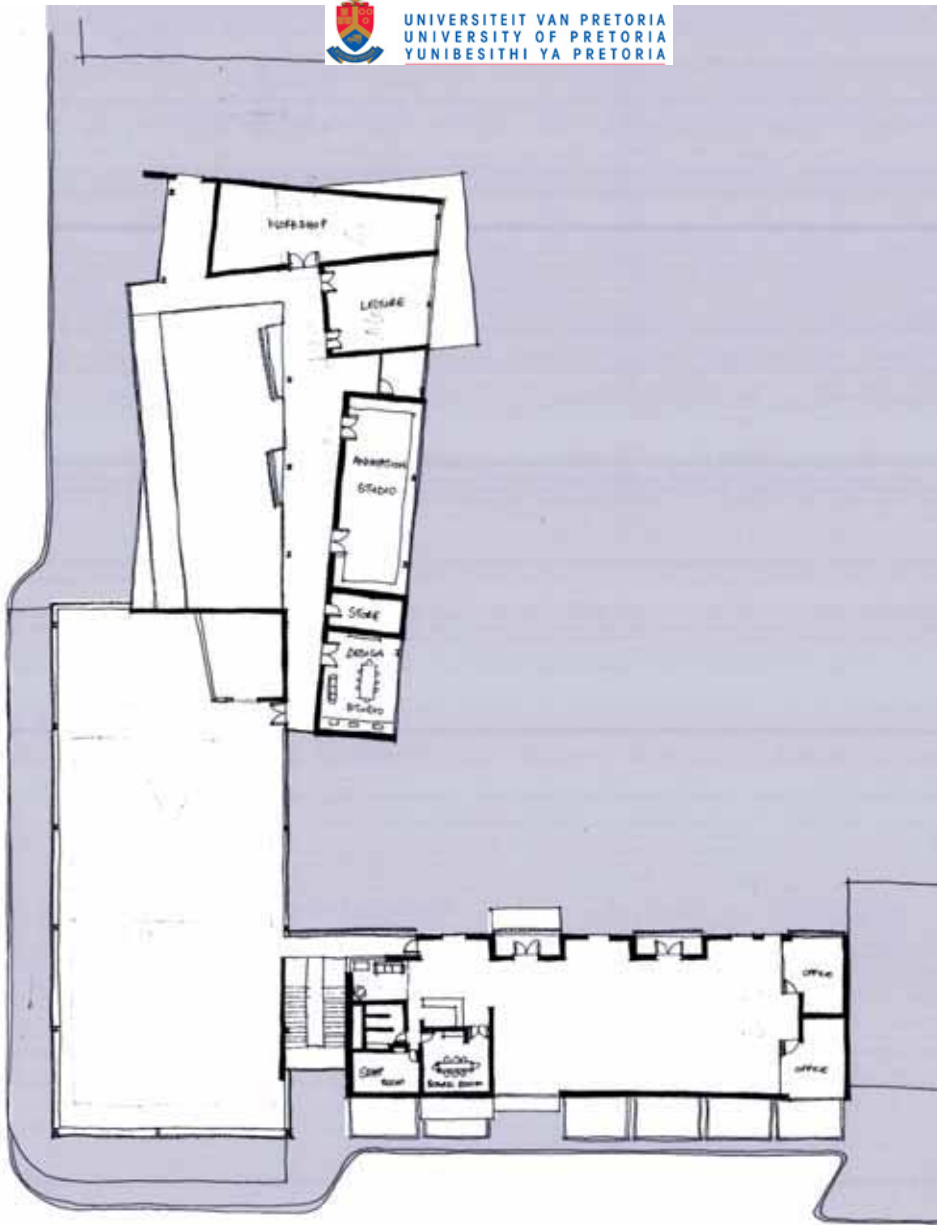
>>ground floor plan
1:500_



8.00



>>First Floor plan
1:500_



8.00

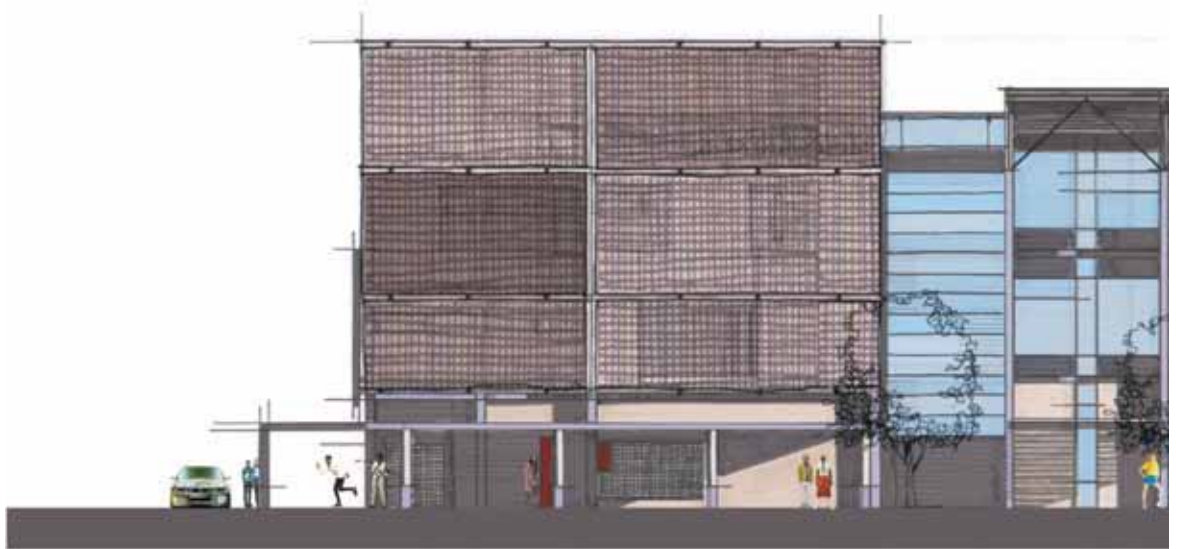
>>second floor plan
1:500_





>>west elevation
1:250_

8.00

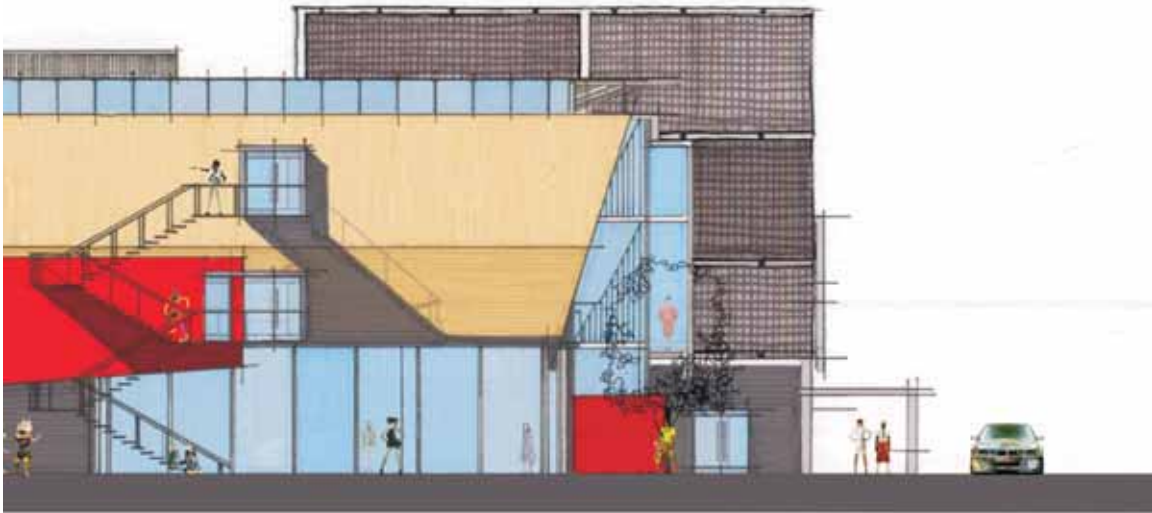




>>south elevation
1:250_

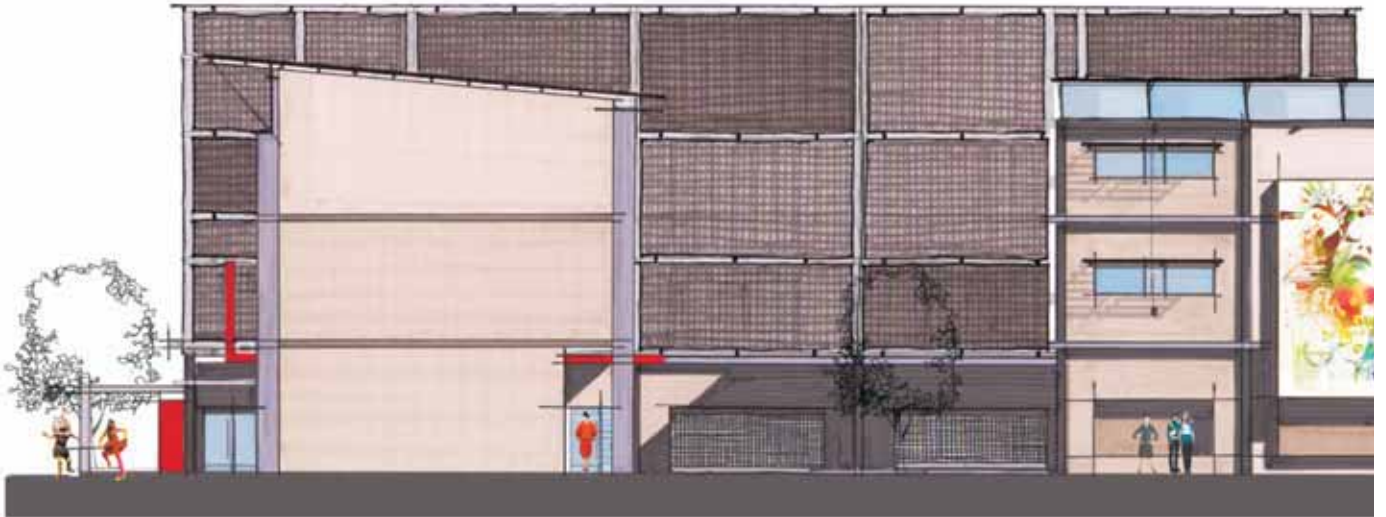
8.00





>>north elevation
1:250_

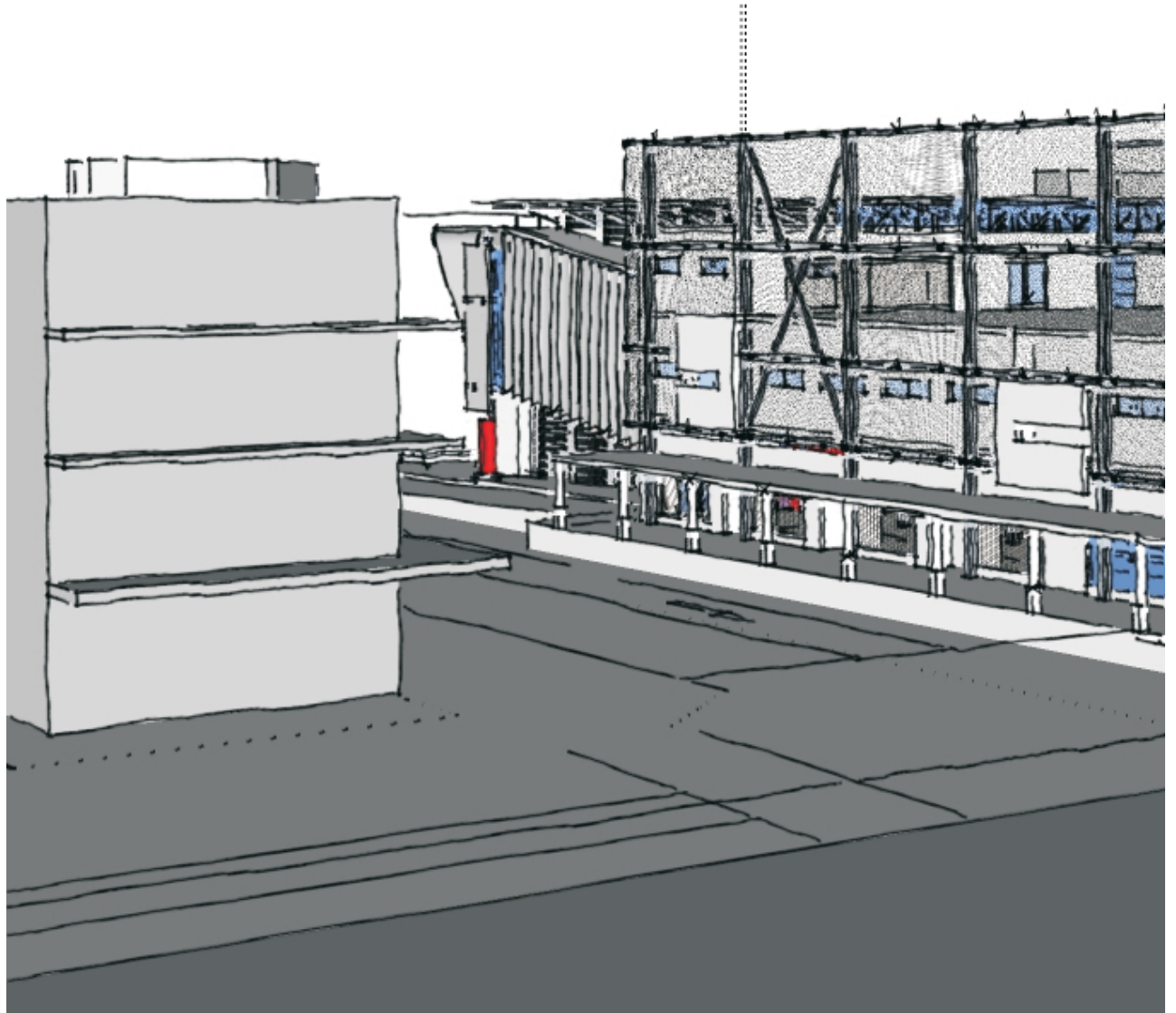
8.00



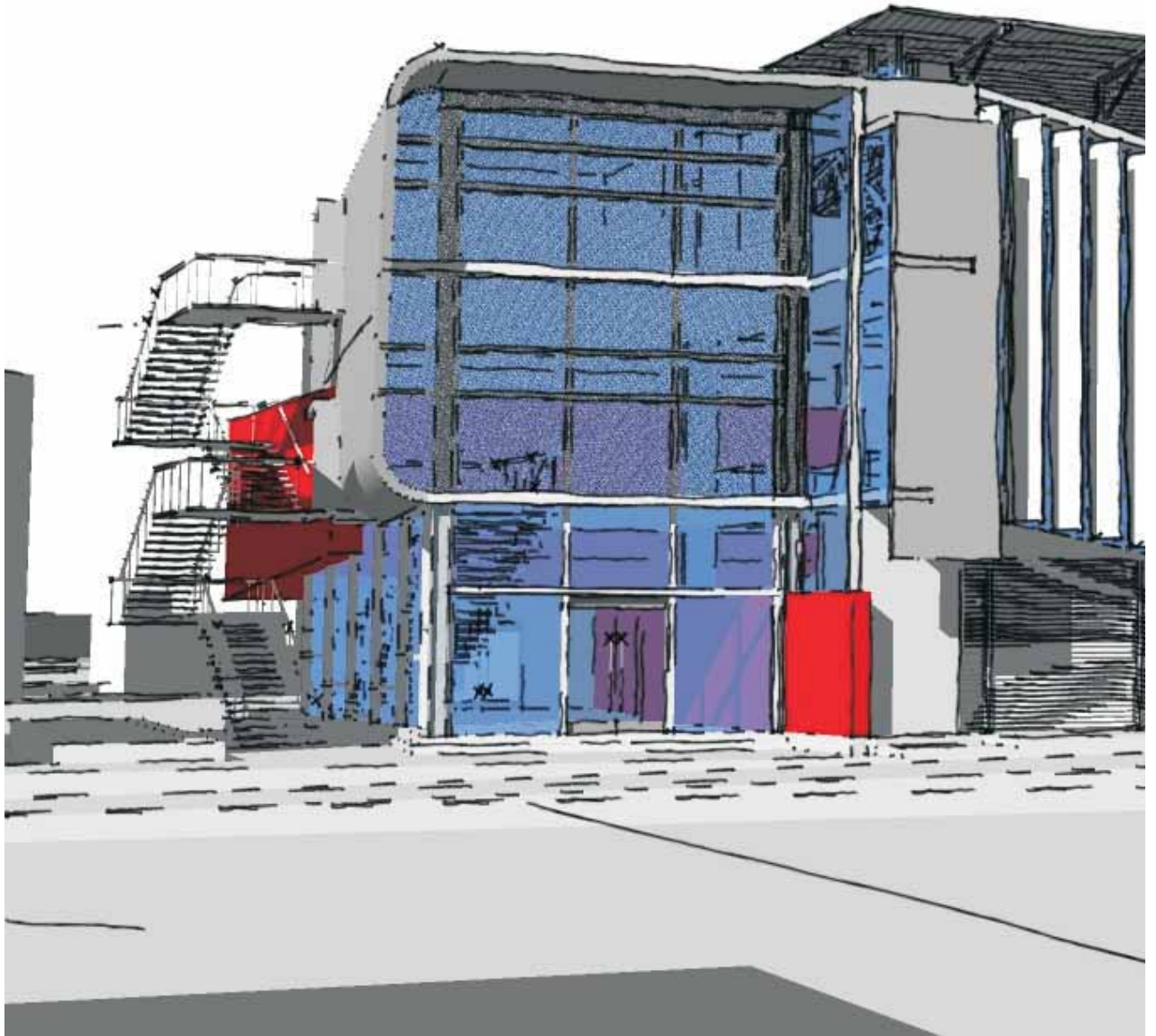


>>east elevation
1:250_

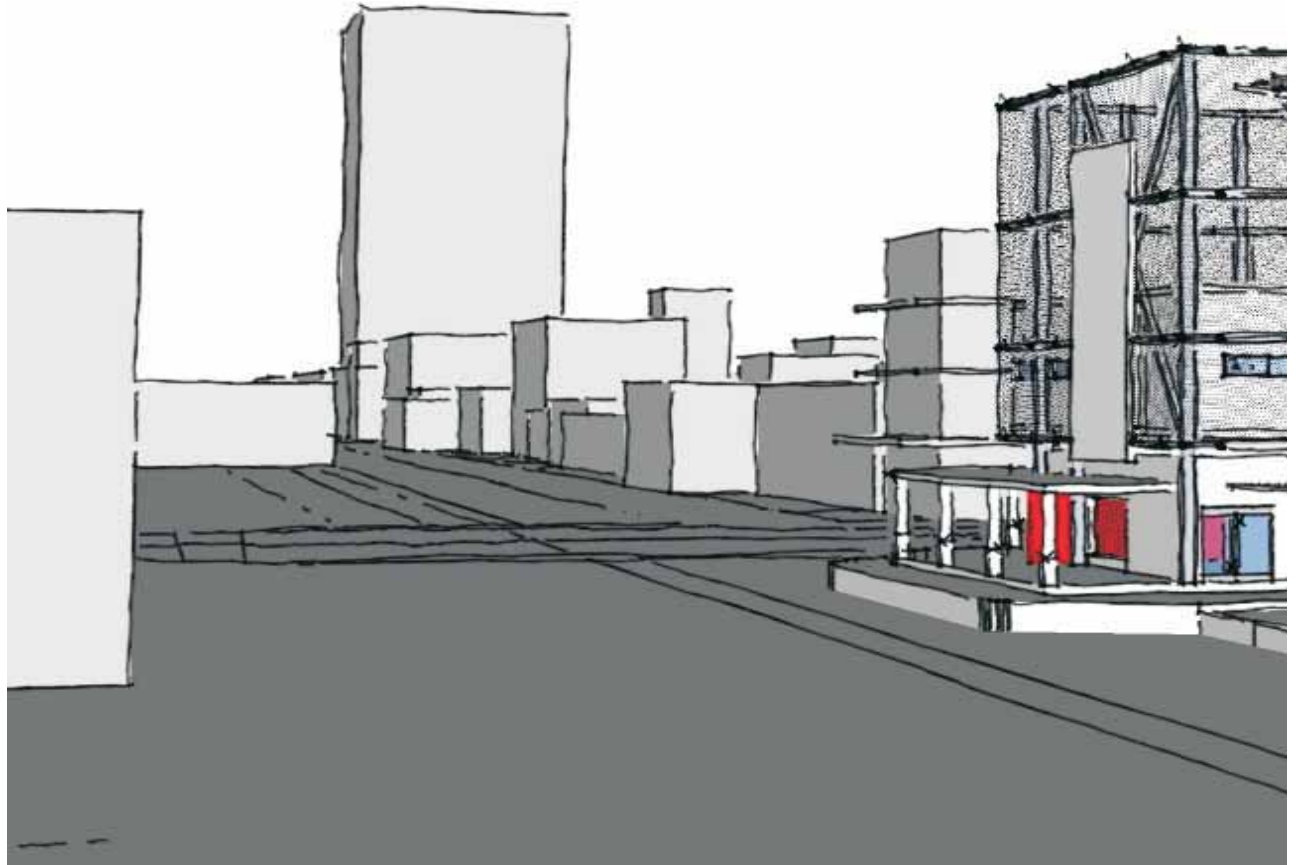
8.00











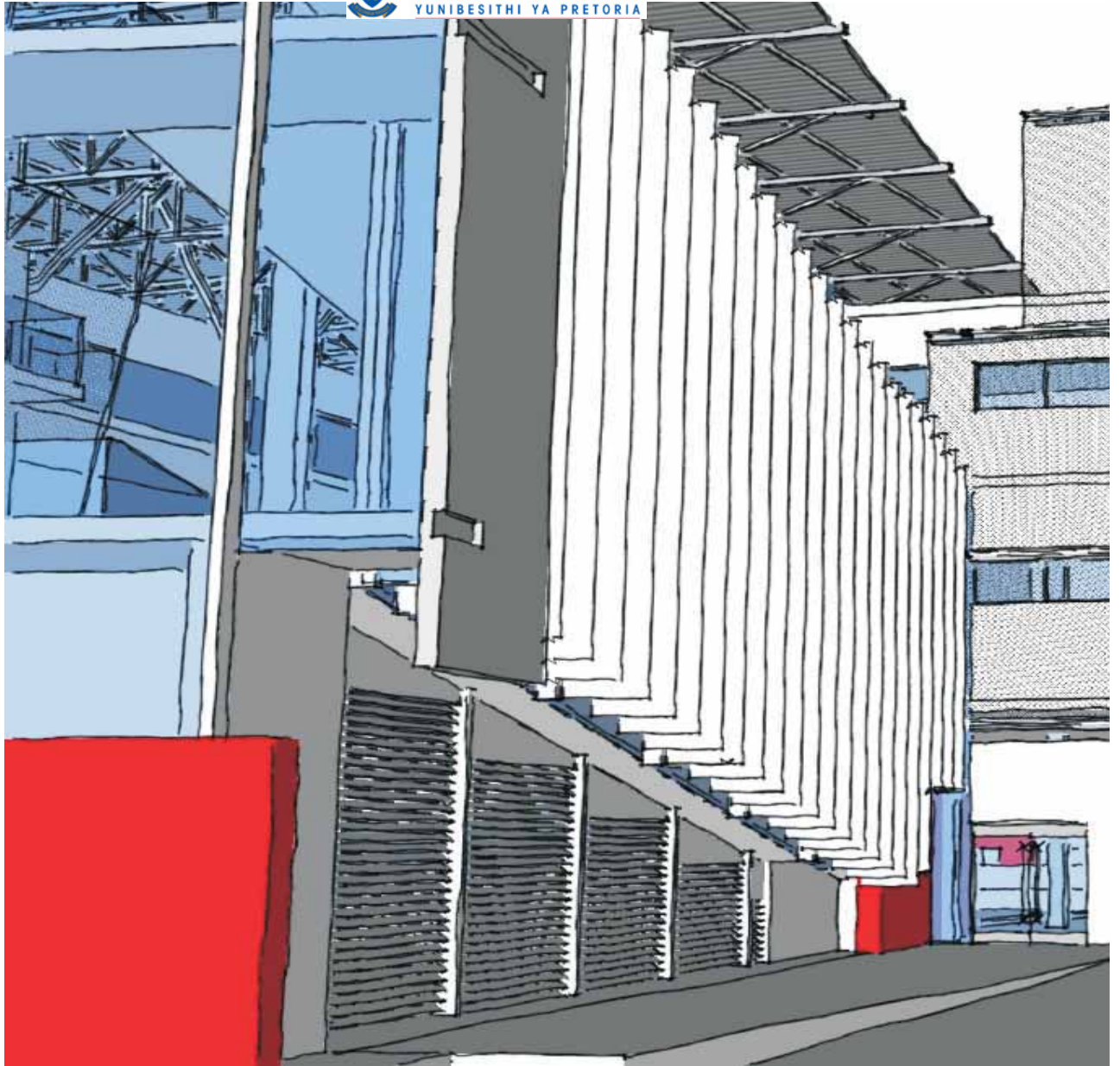


>>struben street view_

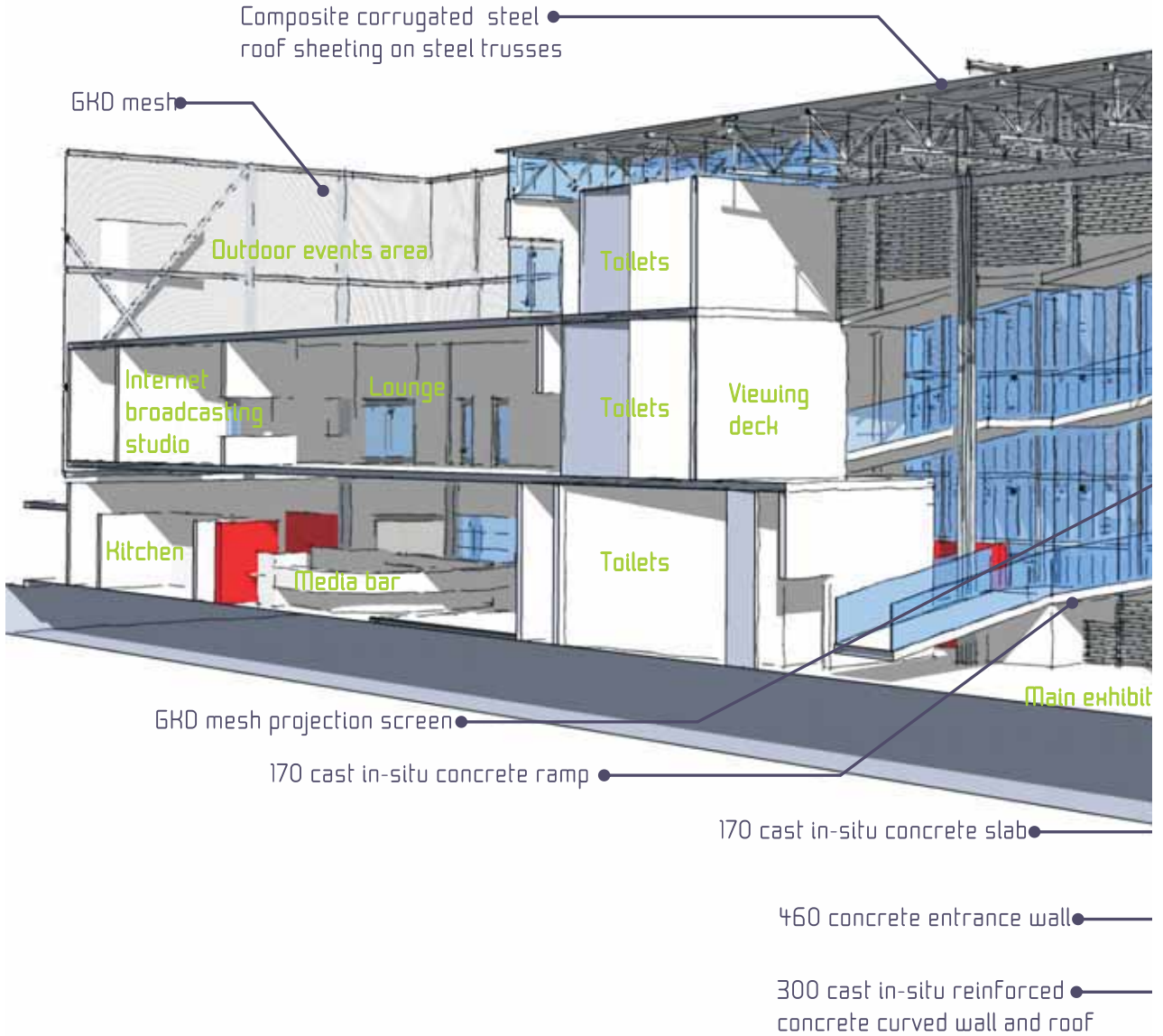


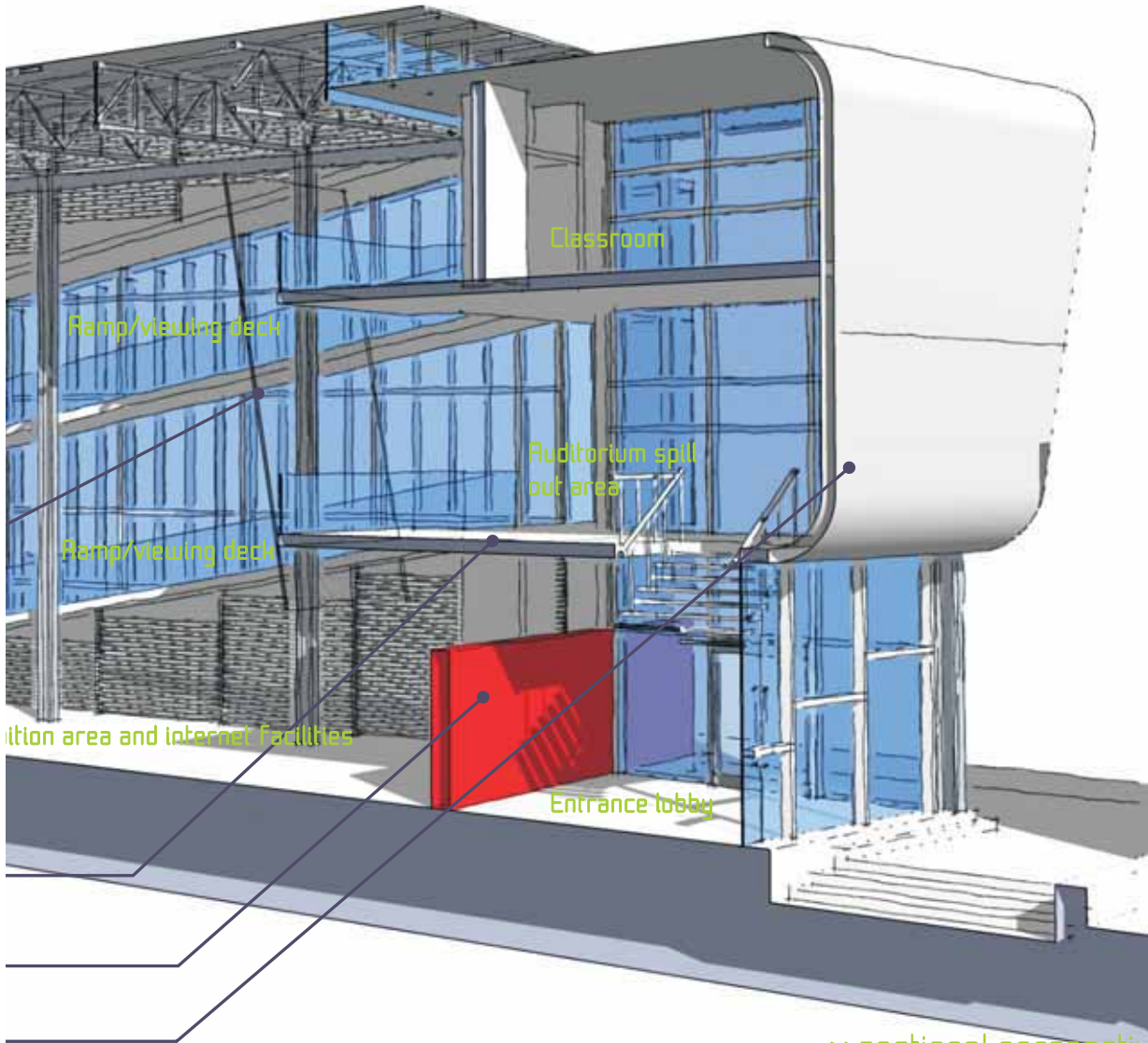












...tion area and internet facilities

Classroom

Ramp/viewing deck

Auditorium spill out area

Ramp/viewing deck

Entrance lobby

>>sectional perspective
existing structure media bar_

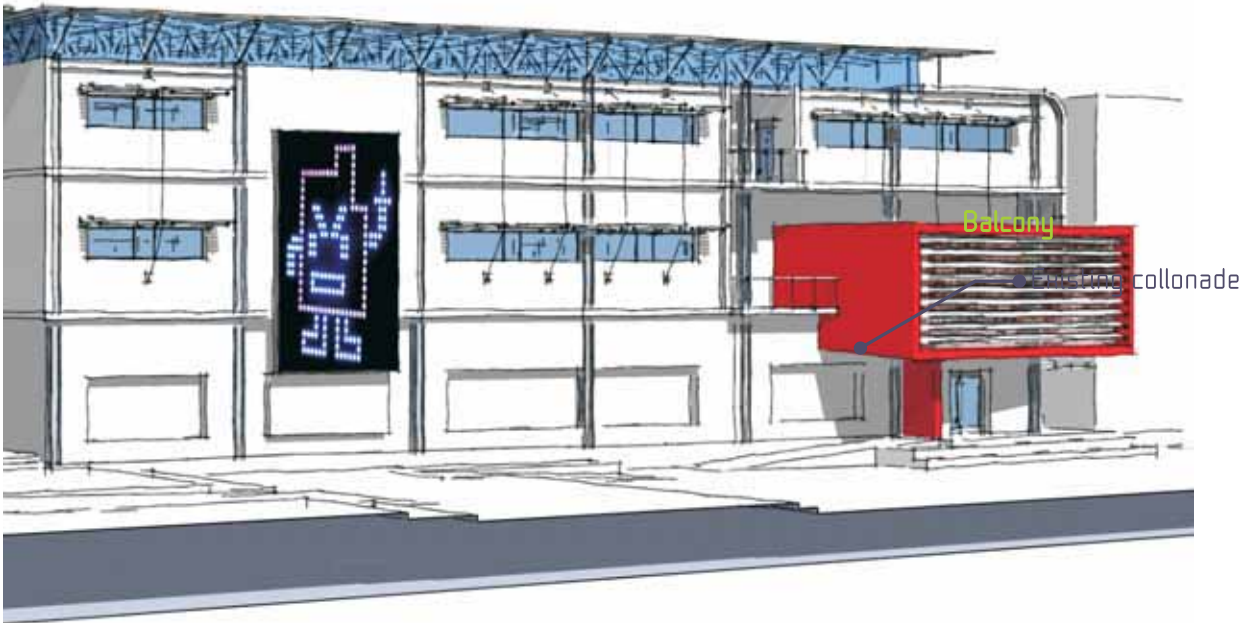
8_00





● Corrugated steel roof sheeting
on steel I-section rafters

● GKD mesh



● 170 cast in-situ concrete slab

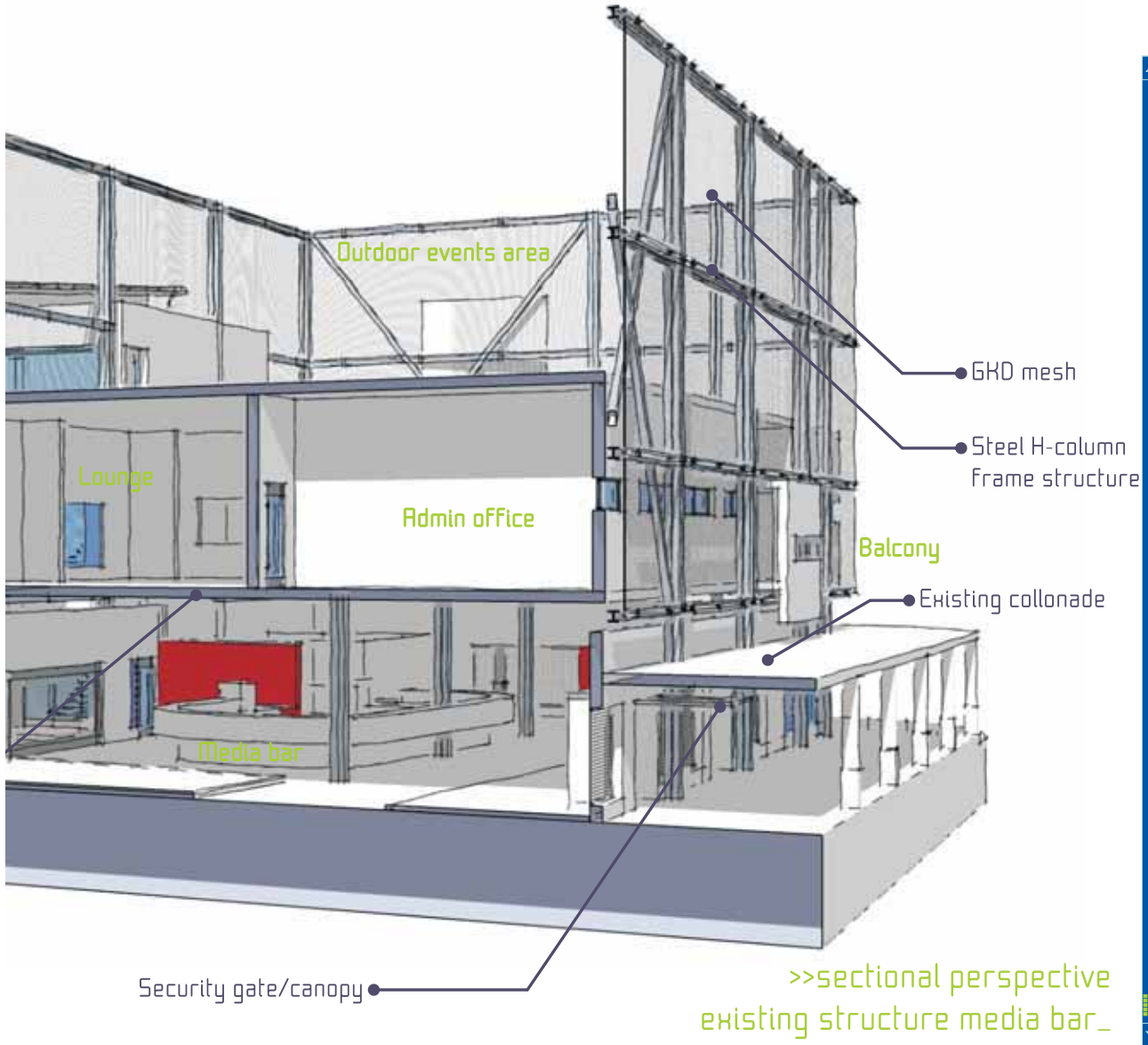
● 230 masonry dividing wall

>>sectional perspective
retail and open plan offices_



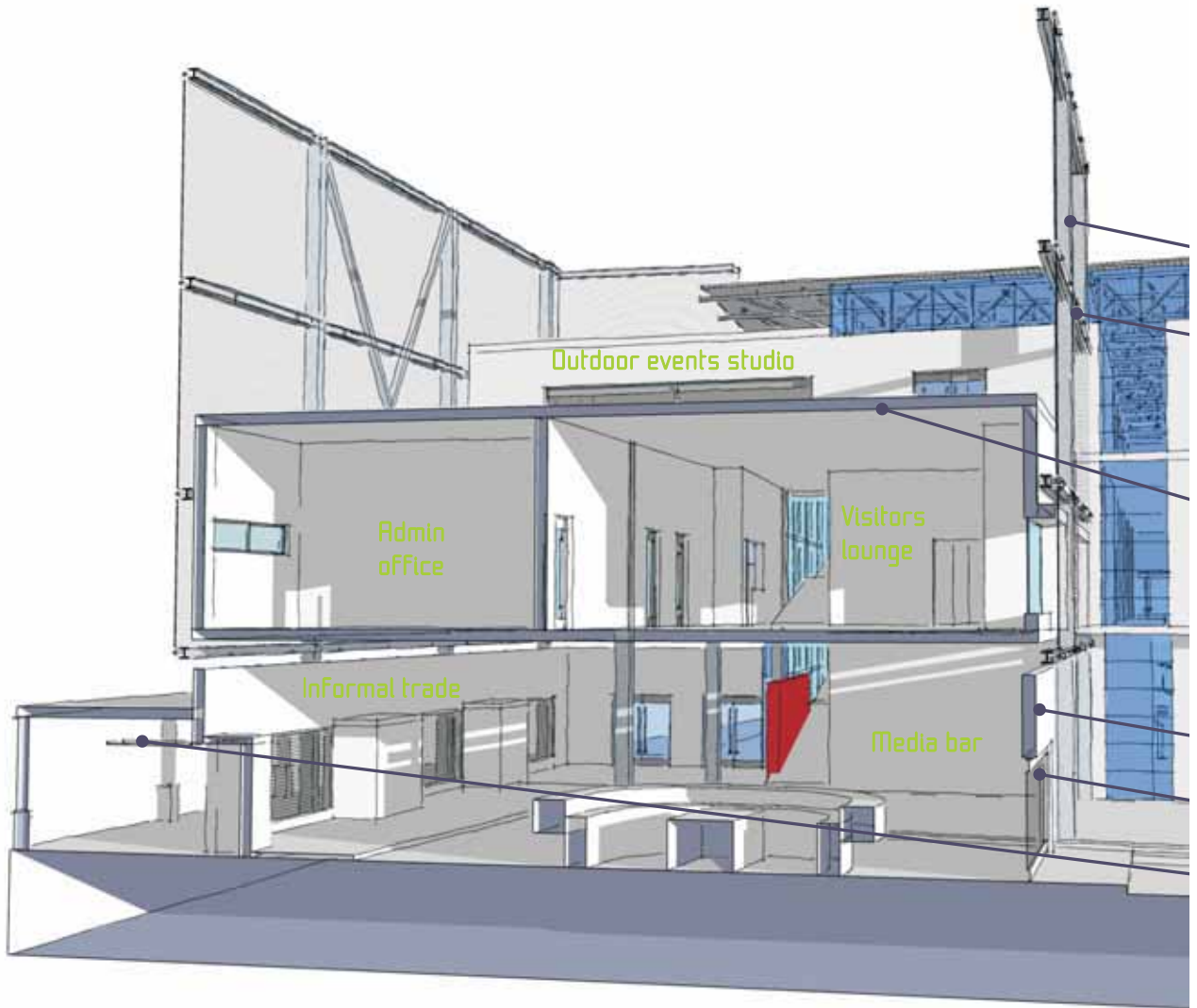
Roller shutter mesh door

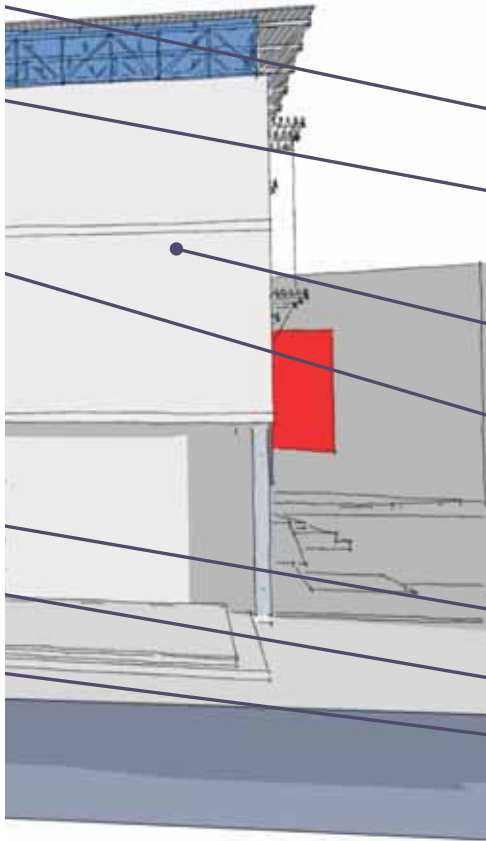
140 pre-cast concrete
decking system on open
web steel joists







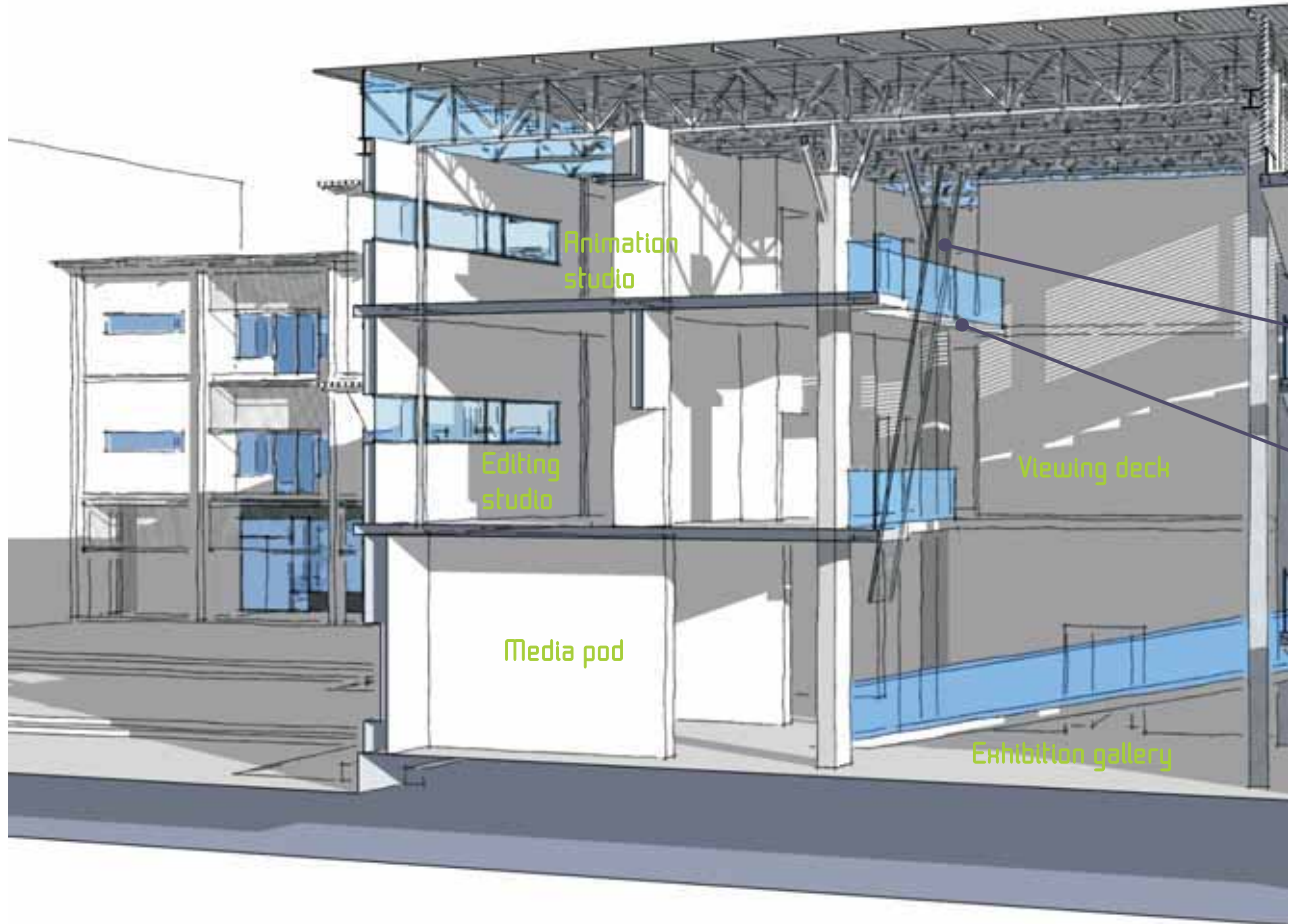


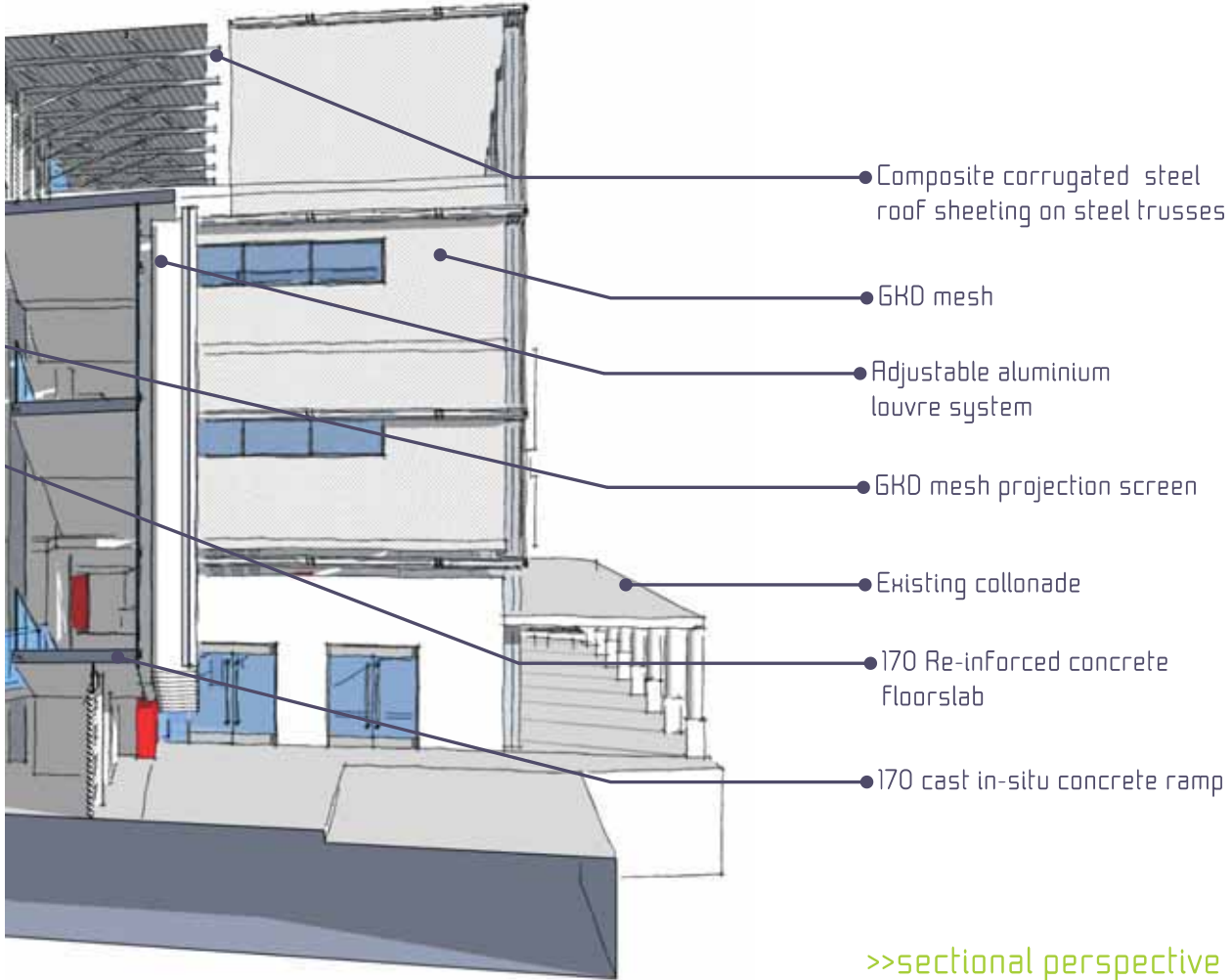


- GKD mesh
- Steel H-column frame structure over existing structure
- Digital media [exchange]
- 140 pre-cast concrete decking system on open web steel joists
- Existing masonry wall
- Roller shutter mesh door
- Security gate/canopy

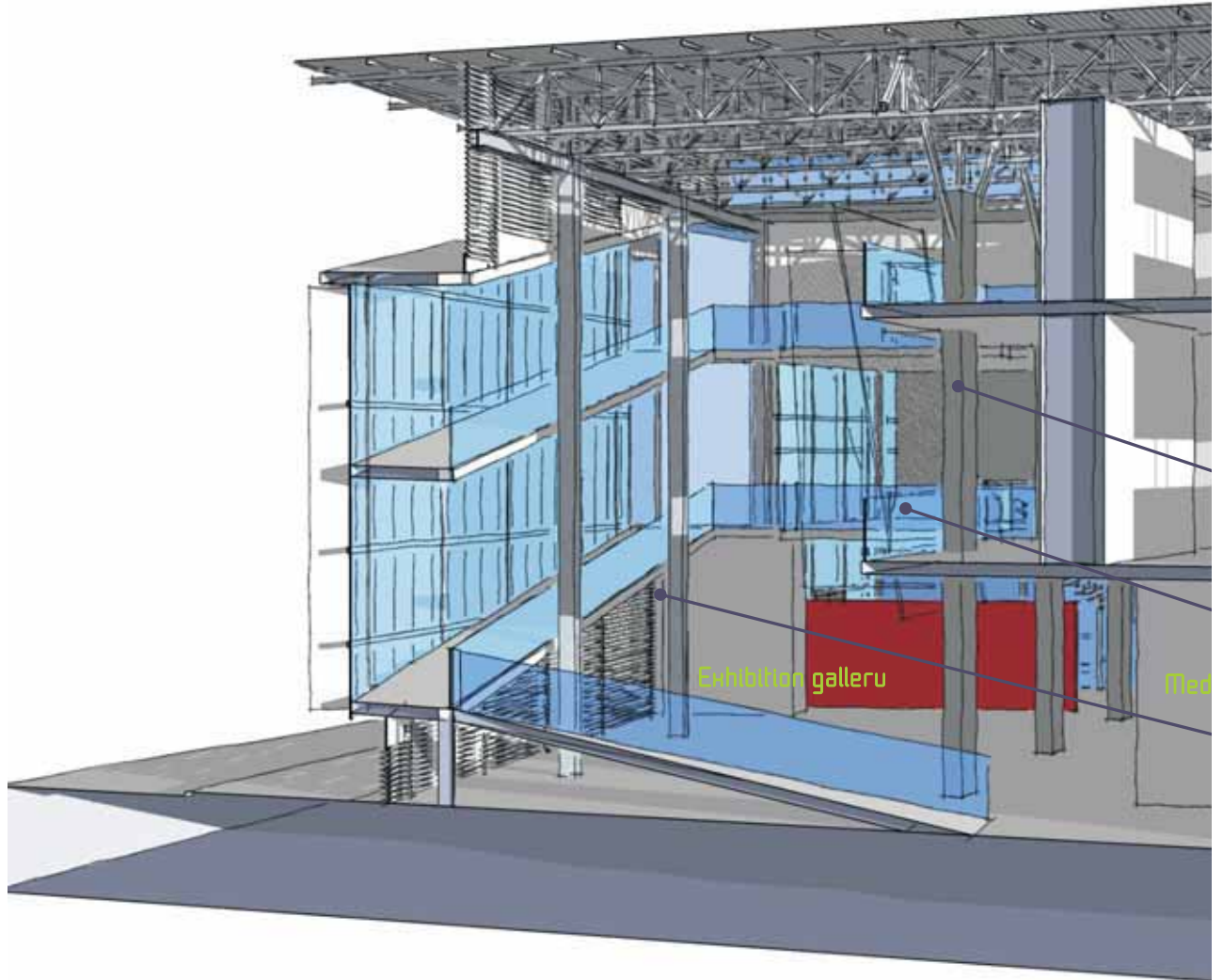
>>sectional perspective
existing structure media bar_

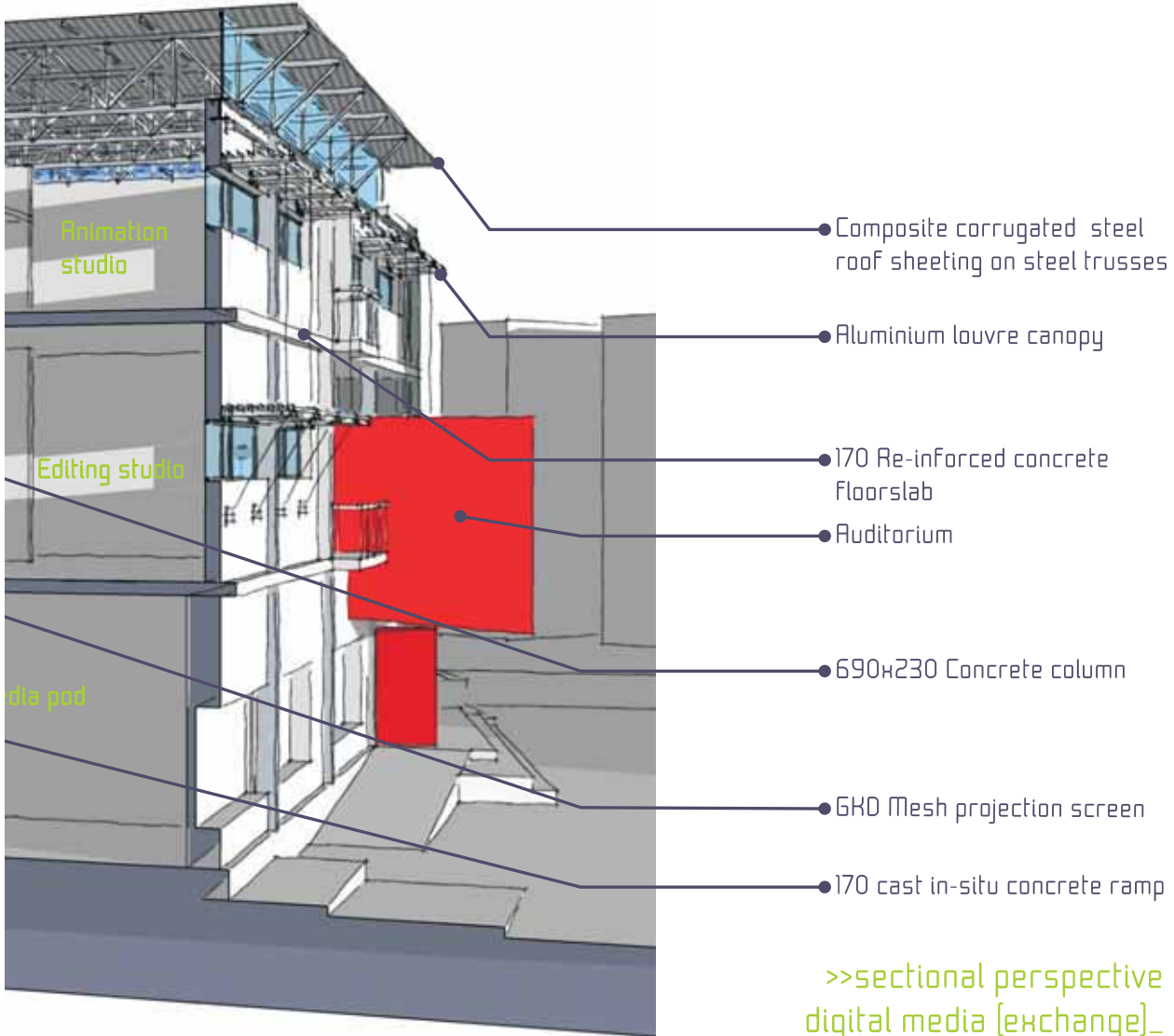






>>sectional perspective
digital media [exchange]_









>>north east view
digital media [exchange]_







>>prinsloo street view
digital media [exchange]_









>>projection on mesh skin_

>>north view
existing structure and retail block_



>>prinsloo street
existing collonade_



>>struben street
extension of collonade_





>>ne square view
digital media [exchange]_



>>sw corner view
existing structure_



