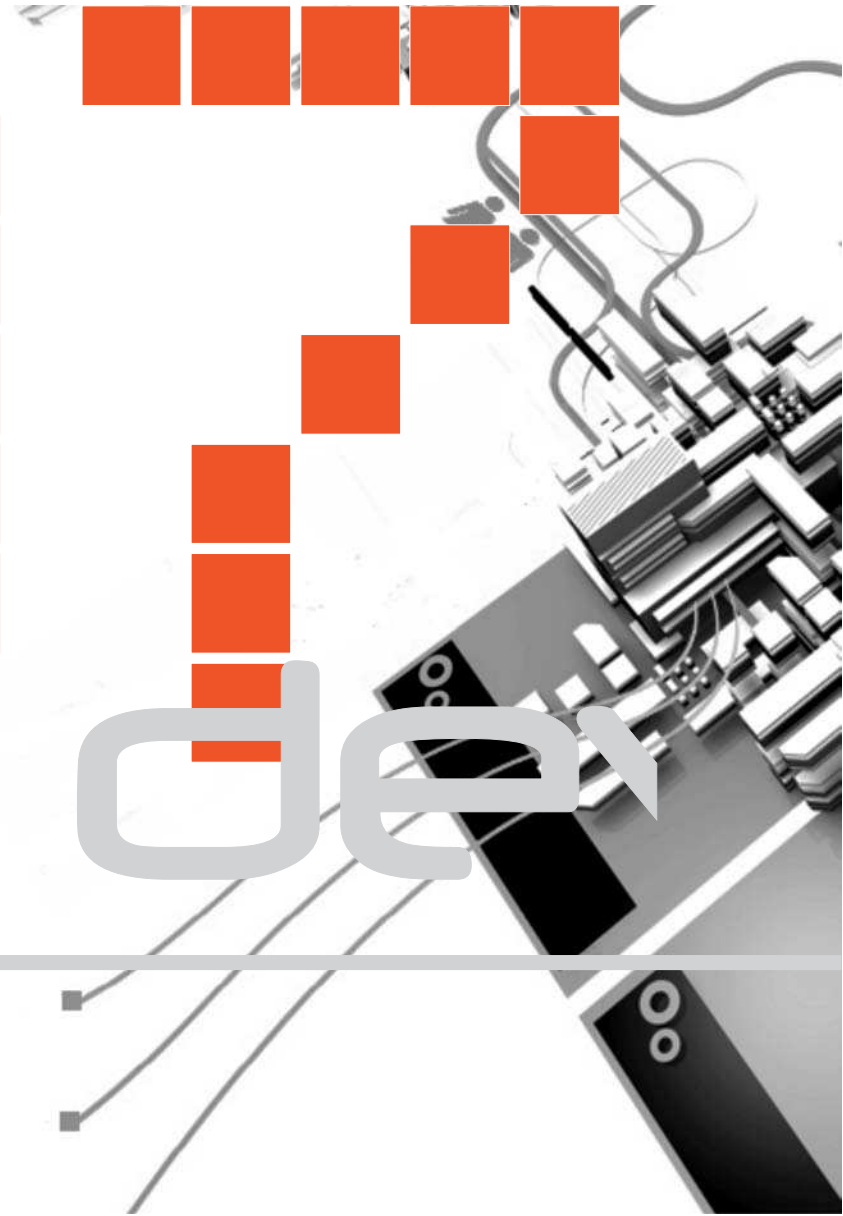


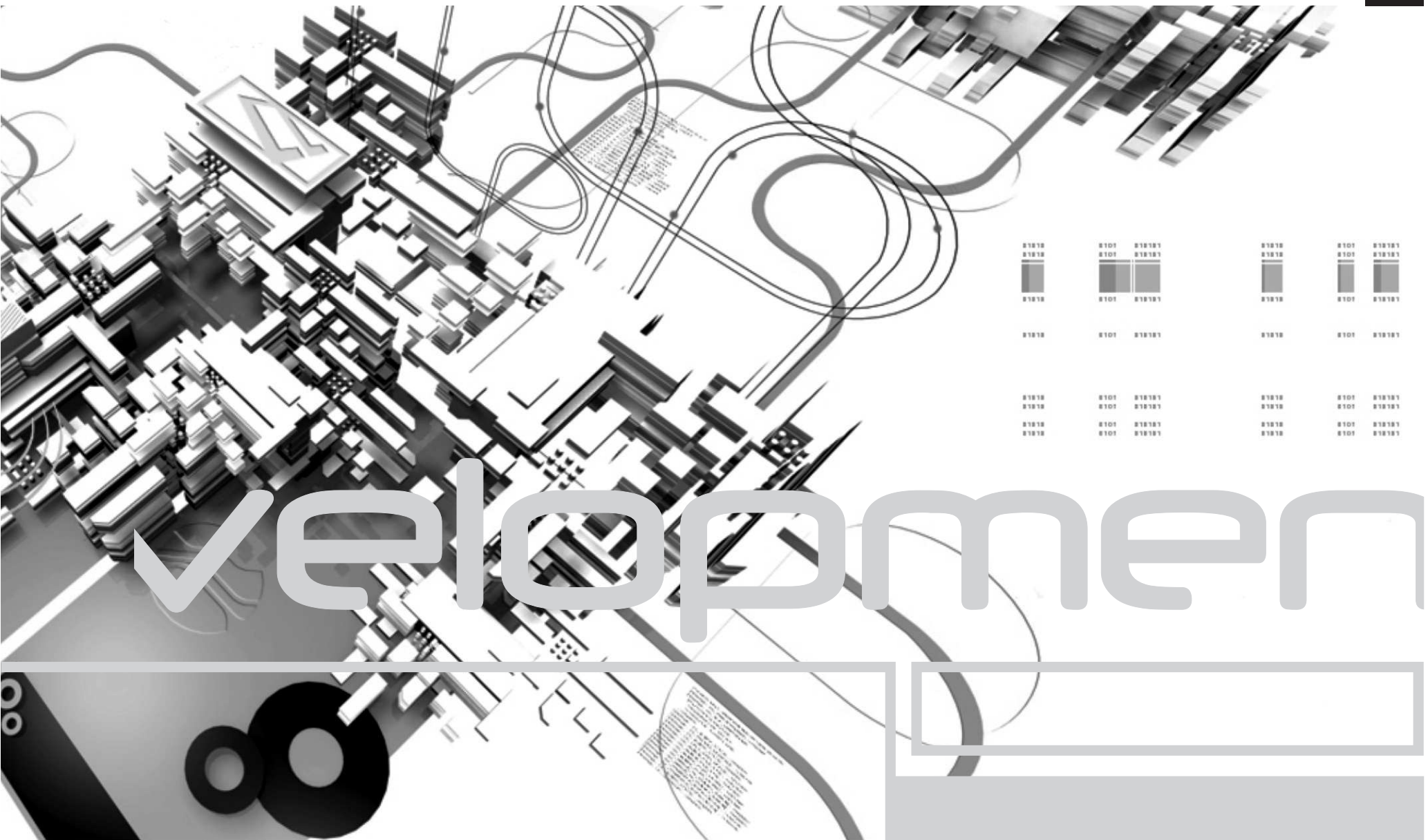


07-01



tesign de

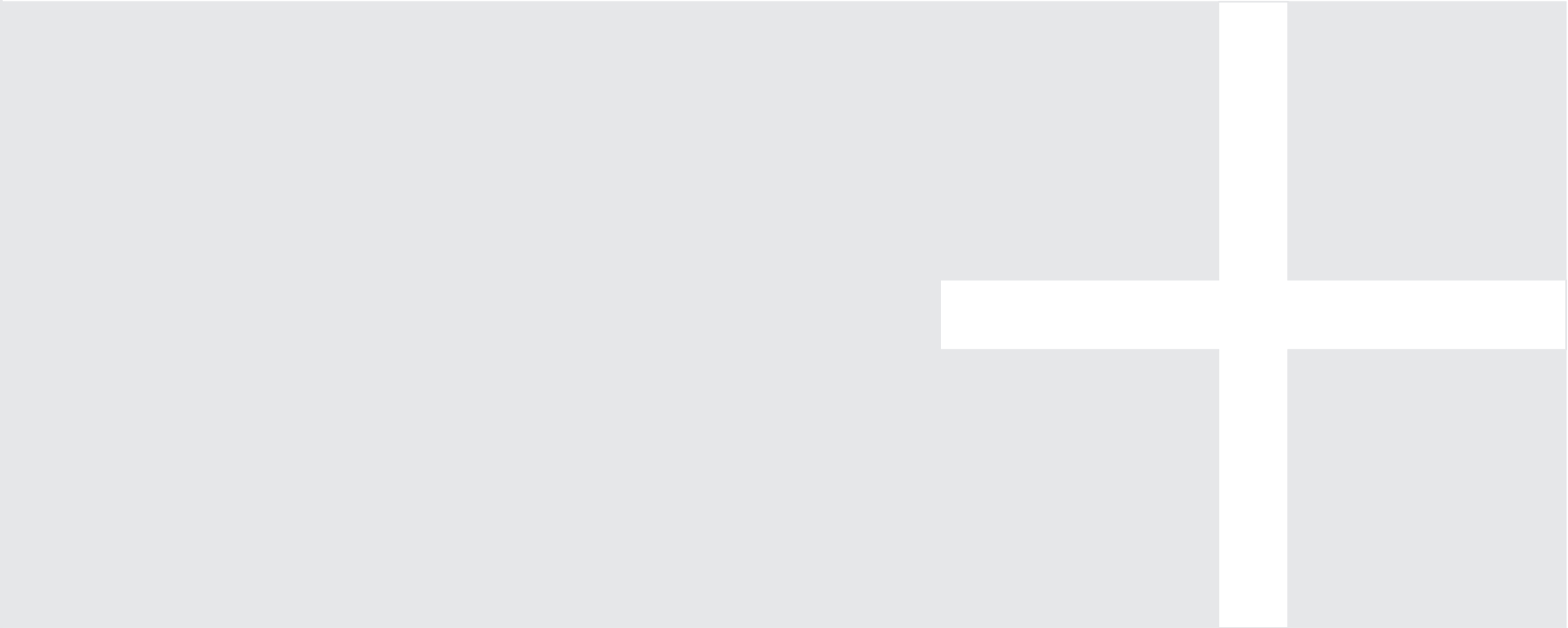




ve

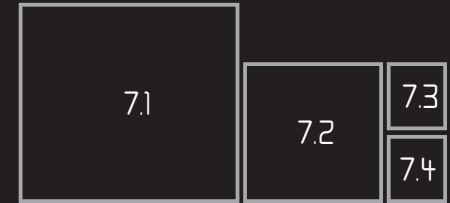
[major issues]

- Animating derelict space
- Creating meaningful public space in the inner city
- Re-interpreting the boundaries between private and public space
- Dealing with notions of identity
 - o With the city
 - o Its buildings
 - o And one another
- Establish a node of interest along the Apie's river promenade proposal
- Design a public space that merges with the city and becomes part of everyday life
- Dealing with architecture and the interface between
 - o The concept
 - o The context
 - o The content



07-05

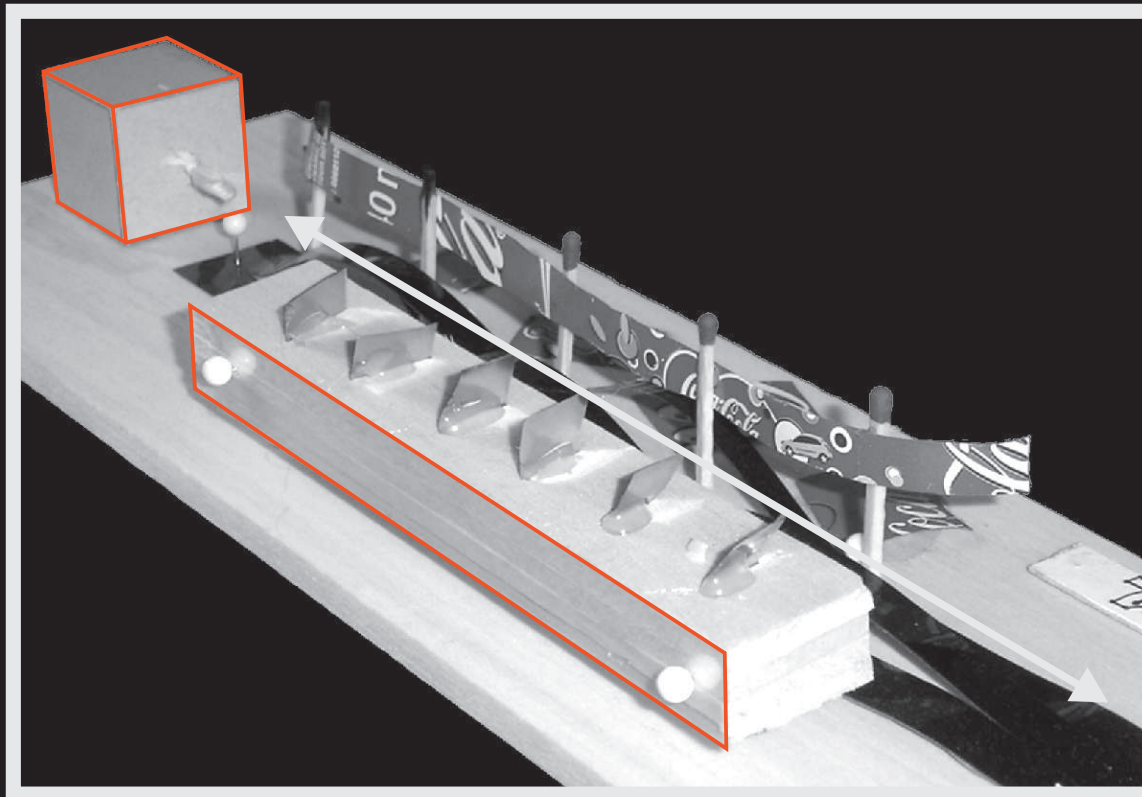
conceptual idea



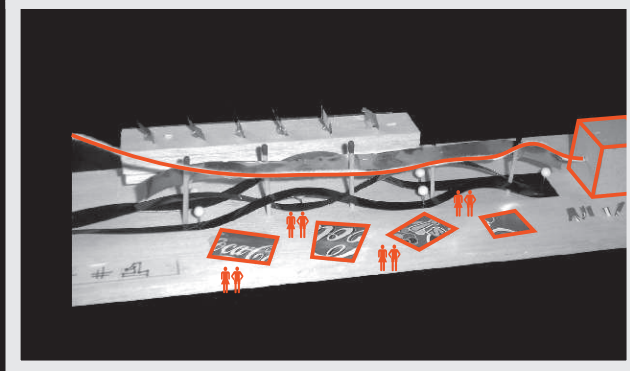
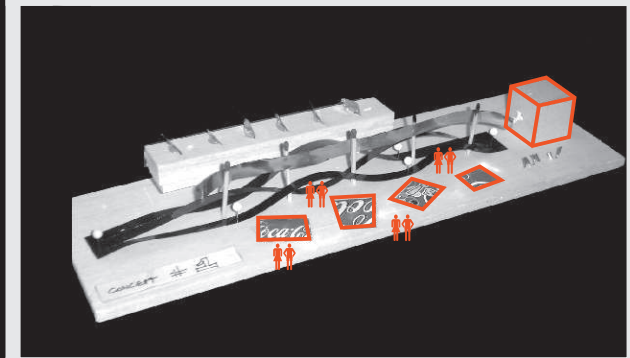
connections

the project strives to bridge everyday public movement into and out of the city with the world of art, by breaking down the formal lines of art and creating a street arts center where this art can be performed and viewed. these spaces are designed to ultimately be influenced by the public as they see fit by accentuating the possibilities where artwork can be created, displayed and viewed and clearly distinguishing these spaces so the lines of art and graffiti are not crossed.

concept model 001.....



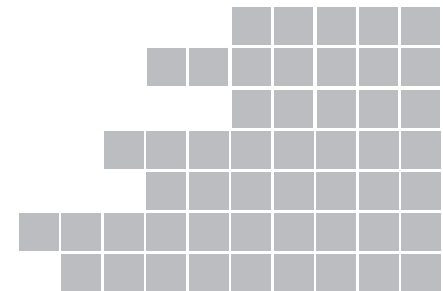
concept model 001 attempts to create formal amenities relating to informal work, display and performance spaces within the art promenade. the formal gallery was envisioned at the pinnacle of the site but without the taxi facilities the pedestrian movement would be insignificant to justify a development like s[.t.]arts



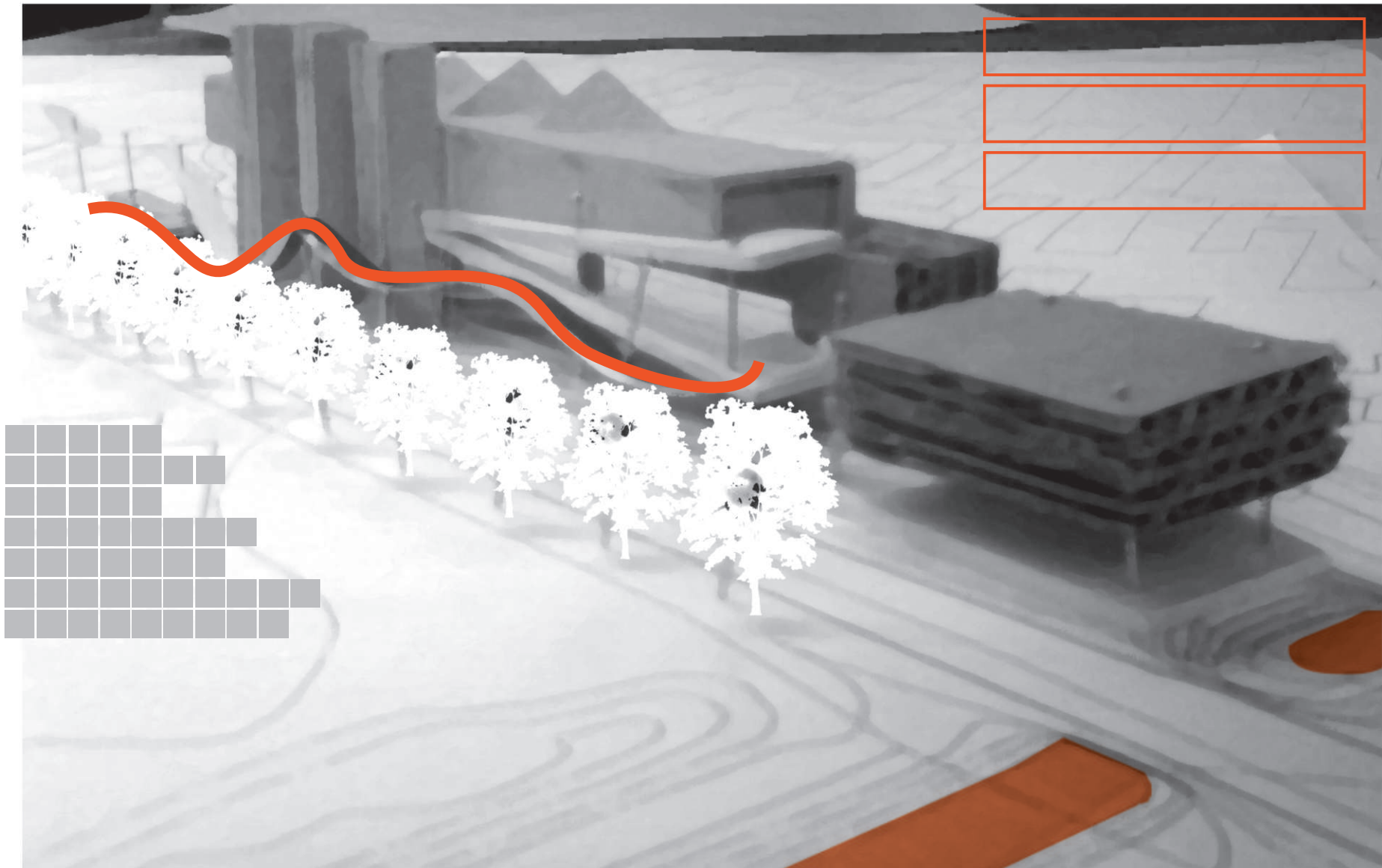


07-07

7.5

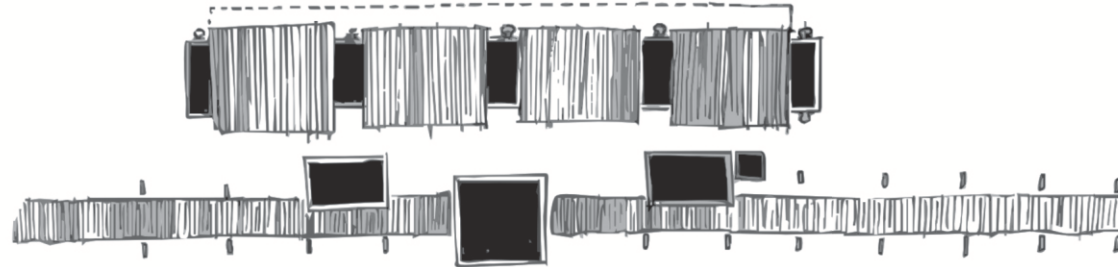
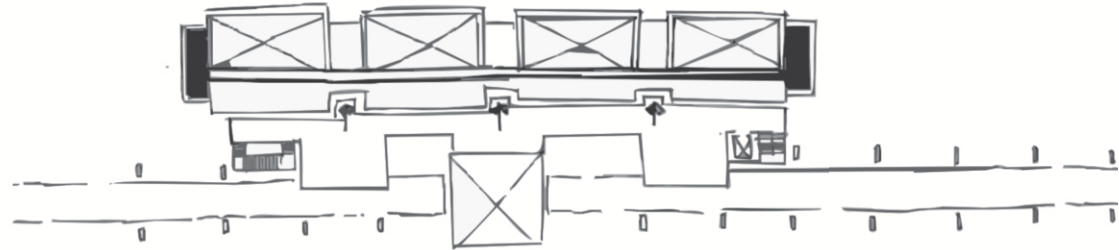
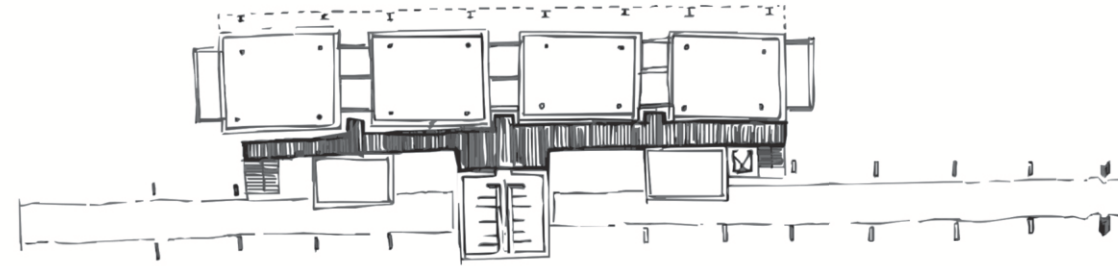
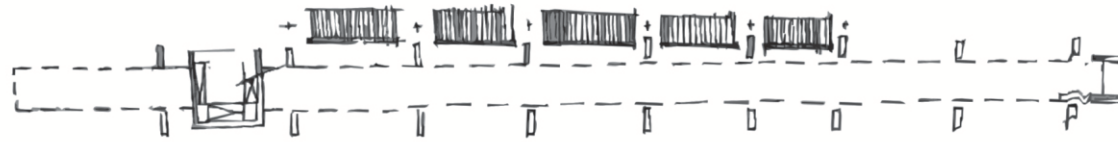
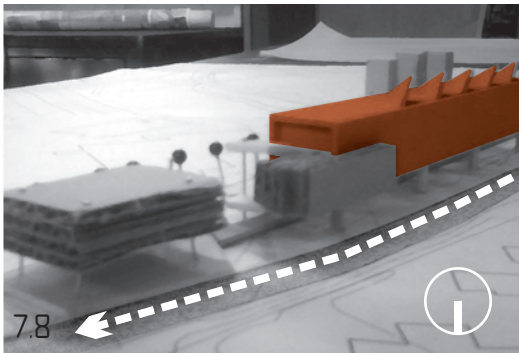
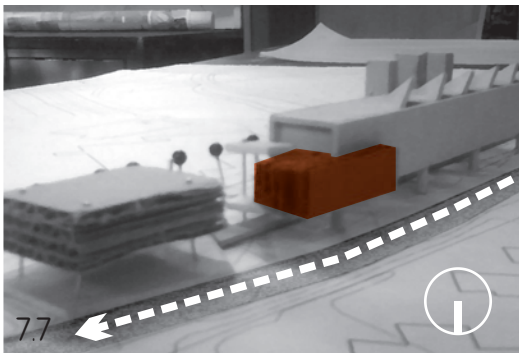
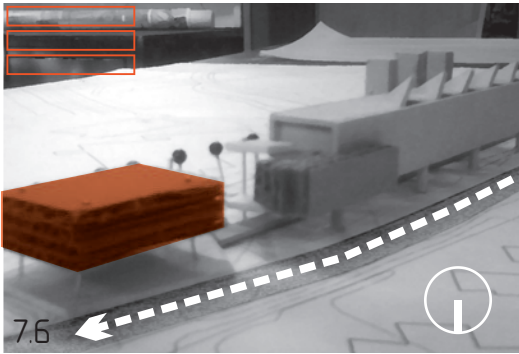


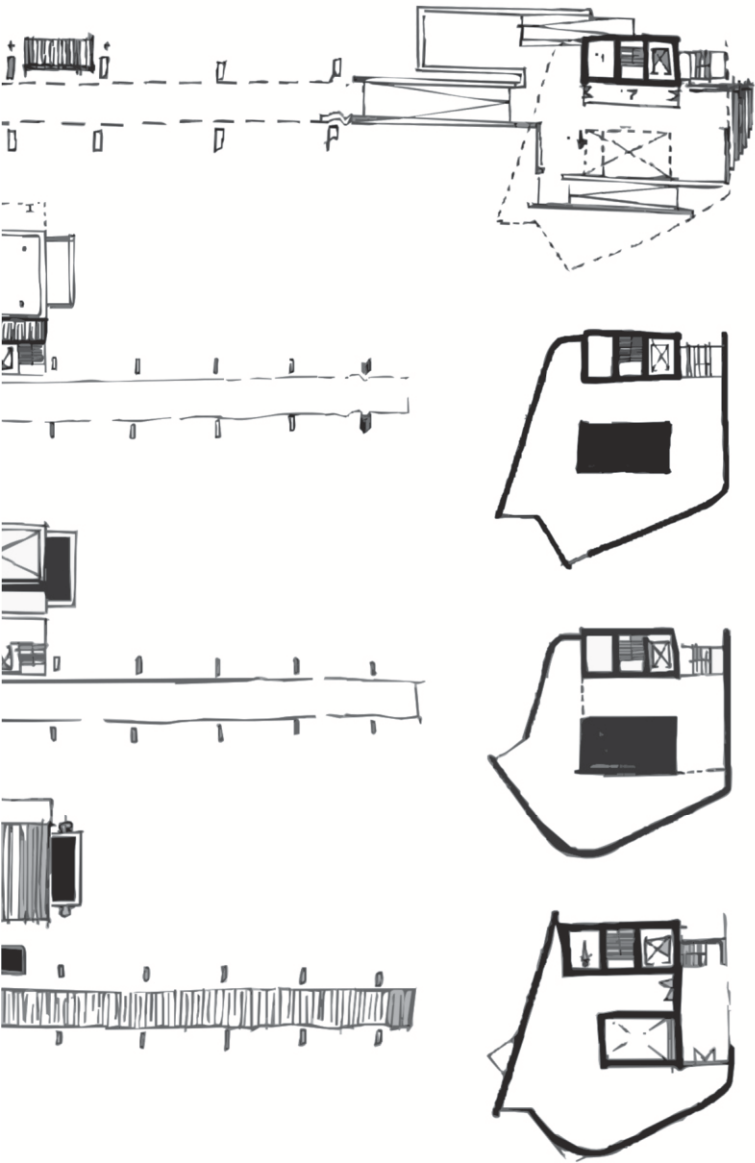
concept model 002





07-09

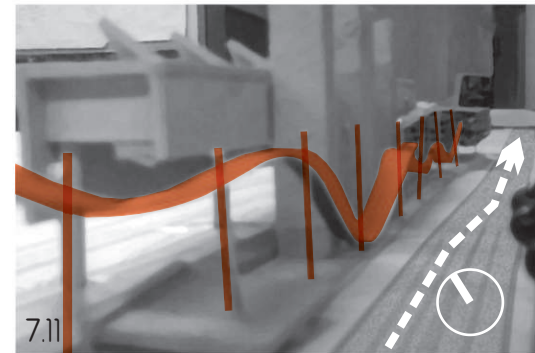
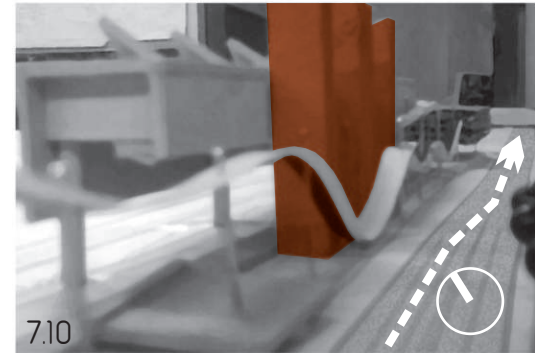




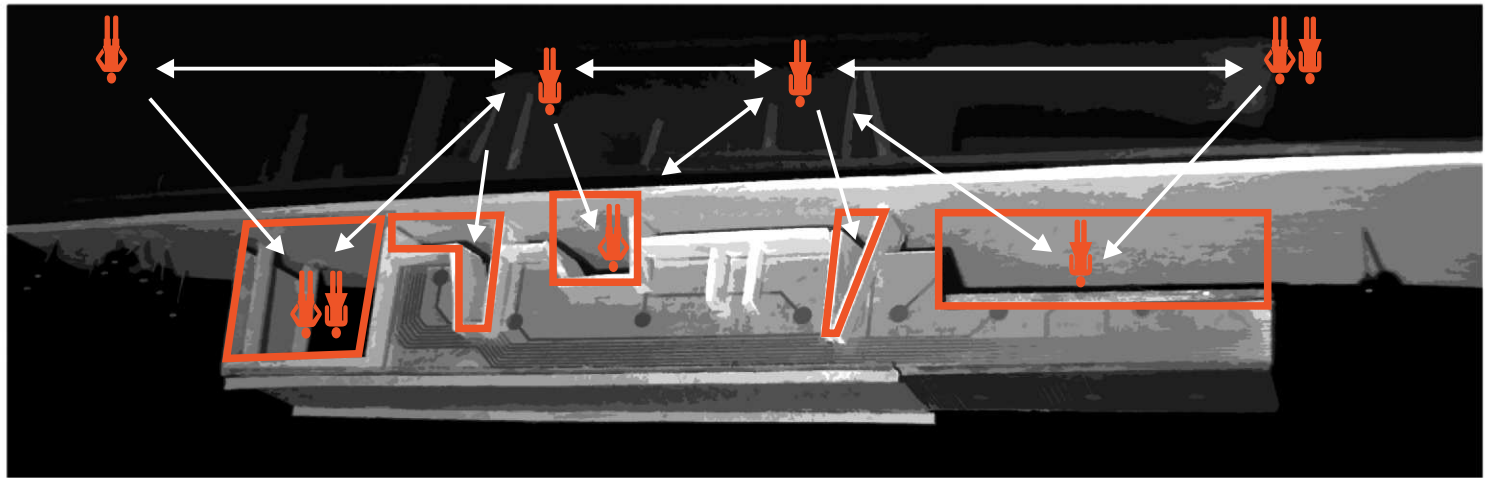
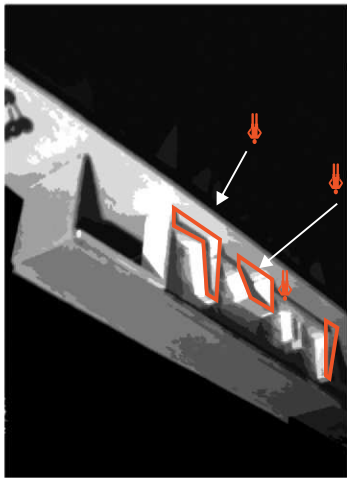
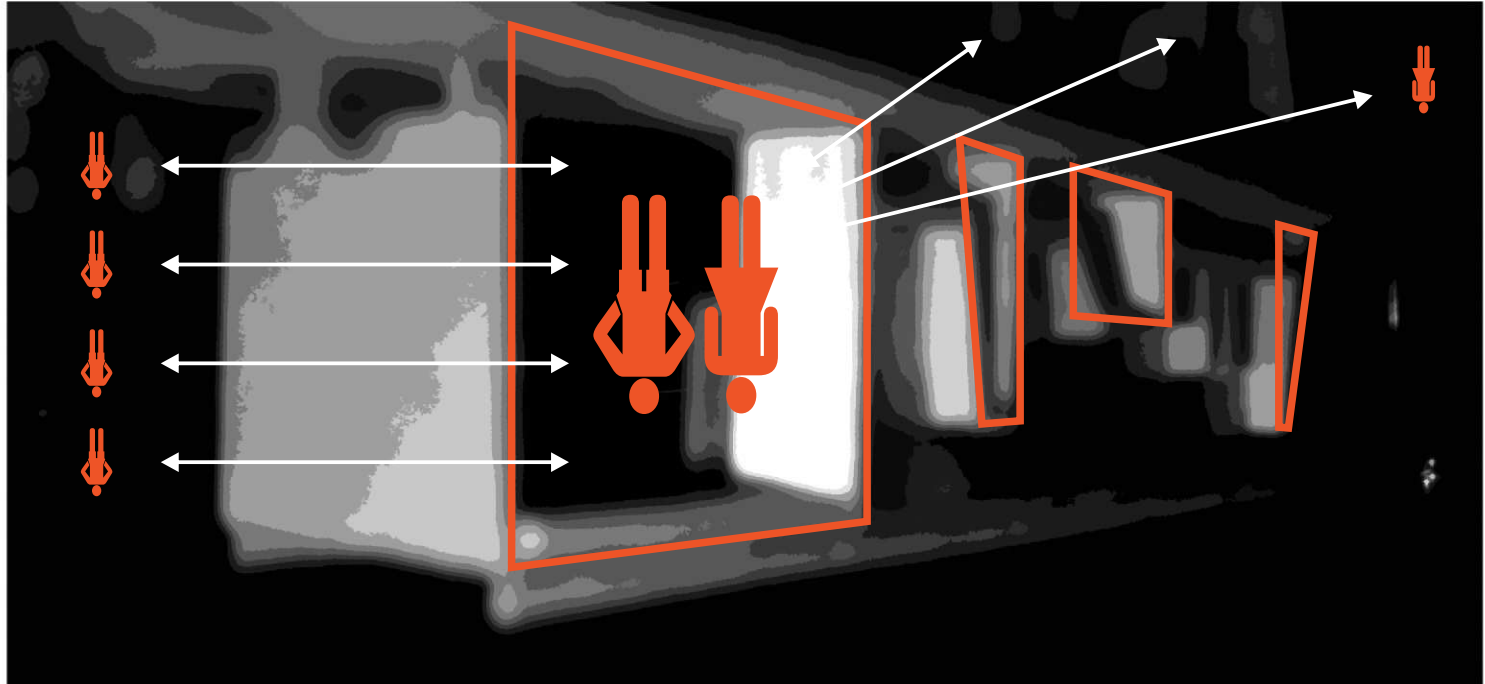
7.9

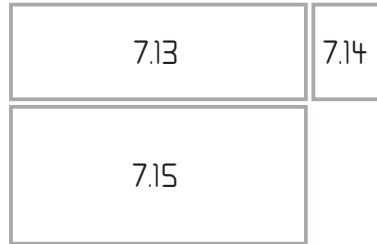


concept model 002 expands on model 001's idea of participation with the public on the street and proposes a continuation of the gallery into the site and integrating the s[ct]arts school as a separate entity. this proved problematic as the schools hours are generally outside the normal 9:00 - 17:00. parking proved problematic as well and as before the center was aimed at catering for the pedestrian public hoping to be generated by the promenade alone and excluded the taxi rank from the site which will later be the greatest draw card to and from the site.



concept model 003

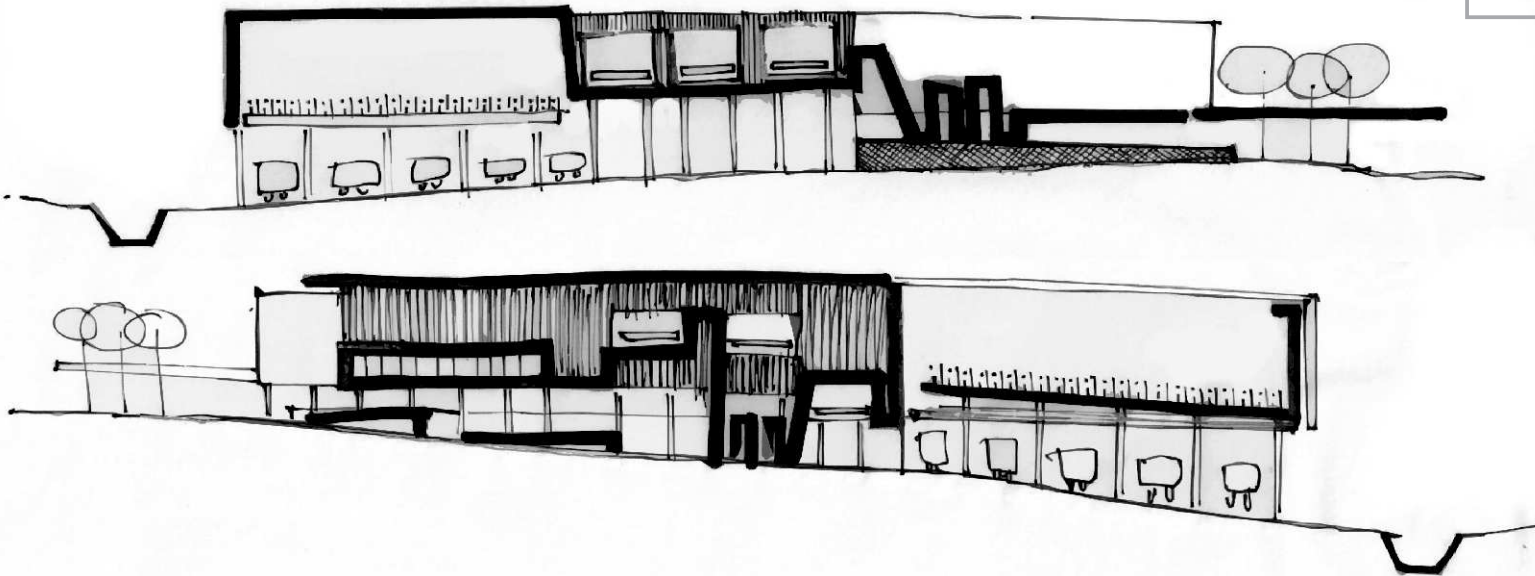




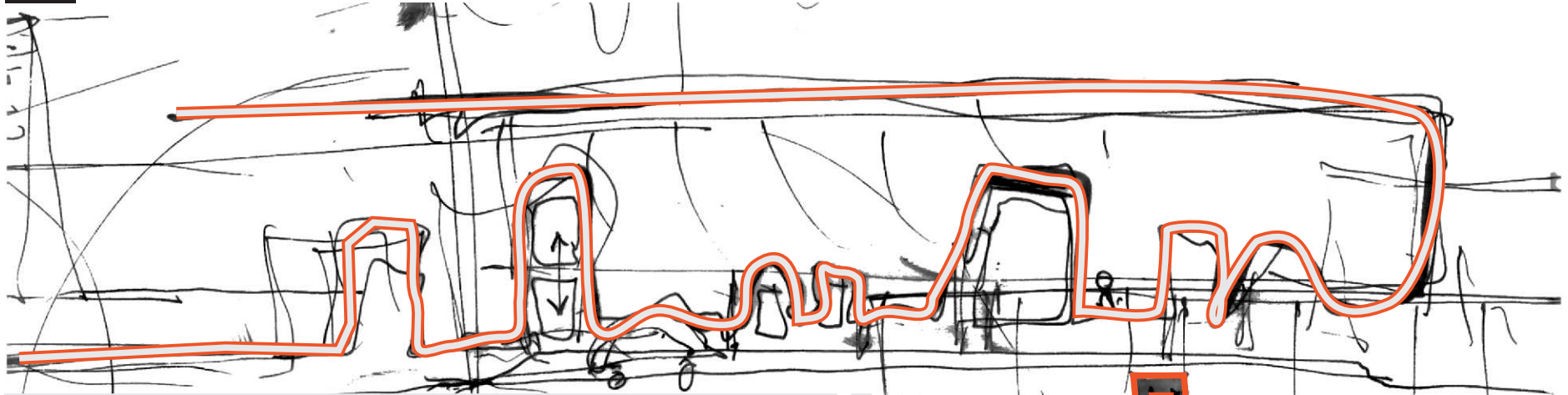
lefebvre's concept of difference involves life being art and the participant being involved in the space opposed to the space catering for the participant. this concept combines with tschumi's concept of event city and involving the city as a stage to be participated in and viewed by others. s[ct]arts embraces this and strives to create stages with people viewing people as a form of artwork expressed differently everyday at every time by all sorts of different participants and spectators.

essentially the center is a series of stages or rooms incorporating different opportunities left to the participant to explore, this essentially combines the two major theories discussed in this document and combines them to create an always changing series of events within the city while its form creates interest in itself and embodies the frame opposed to the actual structure. s[ct]arts transparency further embraces the idea of city as event as the city can view the gallery as an event with the individuals frequenting it will be part of an everchanging artwork and create interest in the spaces within the center.

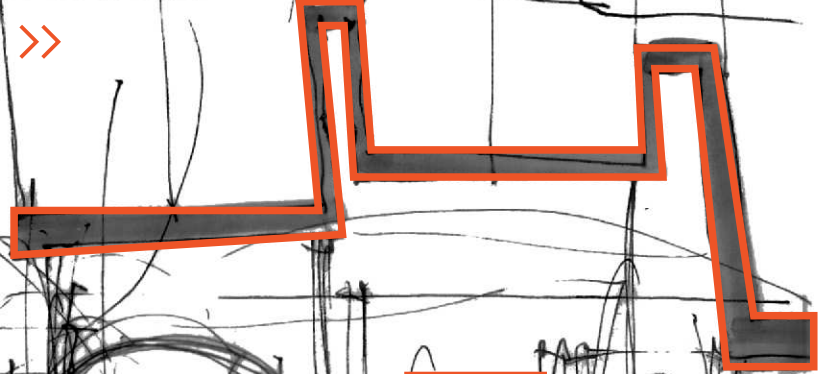
7.16



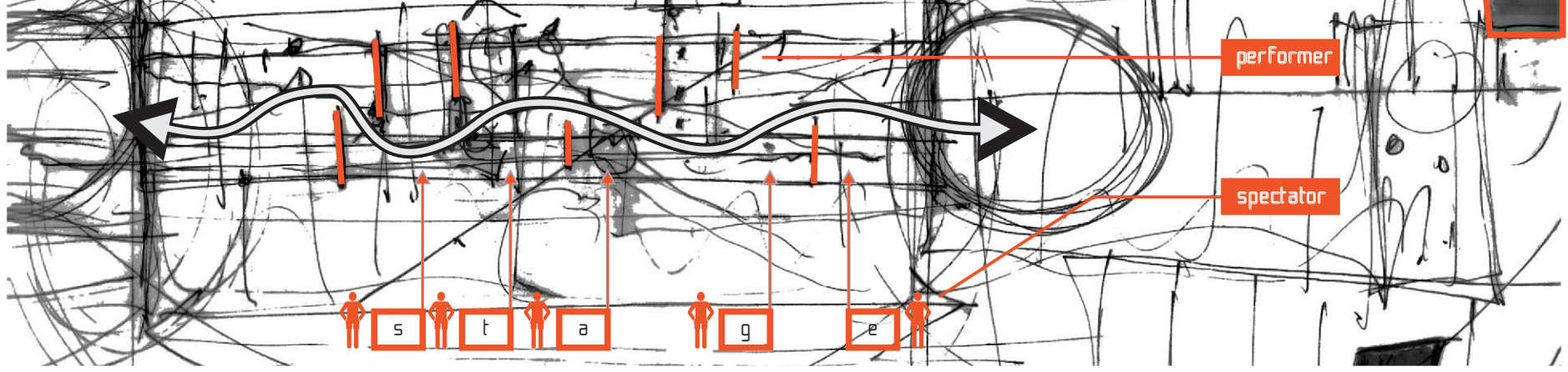
07-13



the buildings elevation on pilotis was largely influenced by Alva Aalto's concept of the functional route of the participant through the building, this route was designed to give the participant an experiential continuity of space and allows the building to unfold as the person engages with the different stages of function experiencing the essence of street arts leading to the pinnacle of formal street artwork which previously had no platform to be viewed by the public.



journey through the site



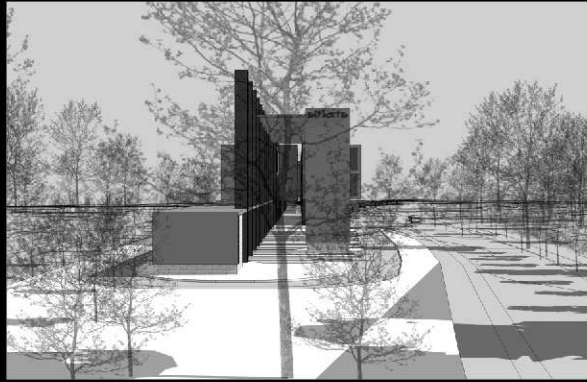
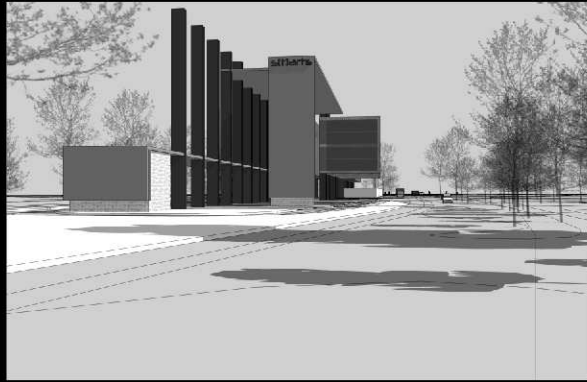
"the fine arts should take the art
to the people, not always expect
the people to come to the art."

Tom Starland : an interview with myself, VISION, volume 10 number 1.

7.17

7.18

07-15



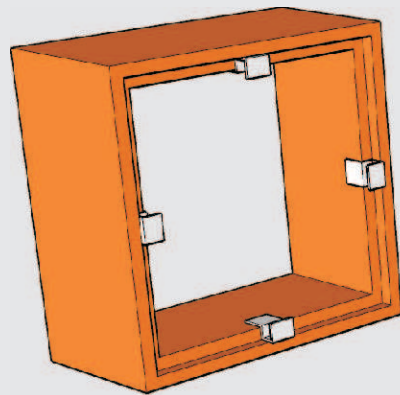


(the s[ct]arts mission)

to enhance the quality of life within the community by elevating the stature of visual art and educating the public to its significance.



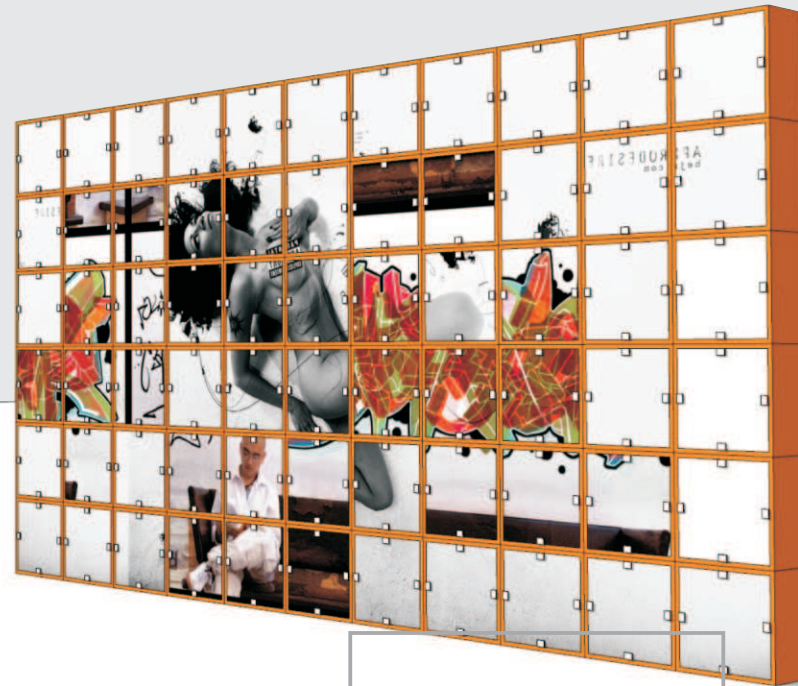
07-17





expression walls

the expression walls are situated along the route of the site and are primarily an advertisement of s(t)reet art in its rawest form. these walls are continuously changing and from time to time used as a complete canvas by and artist creating an event to be viewed by the public on that day. the concrete wall is static and clips a fibre cement board within the void. this canvas is what s(t)arts students use to paint and draw on and this artwork will be on display for that month to be included in the Friday sessions once monthly. these expression walls will be bare from time to time and this again creates a stage with the city or its people as a backdrop expressing the concept of the event (spectator, participant, stage) throughout the project.



7.21

7.22

