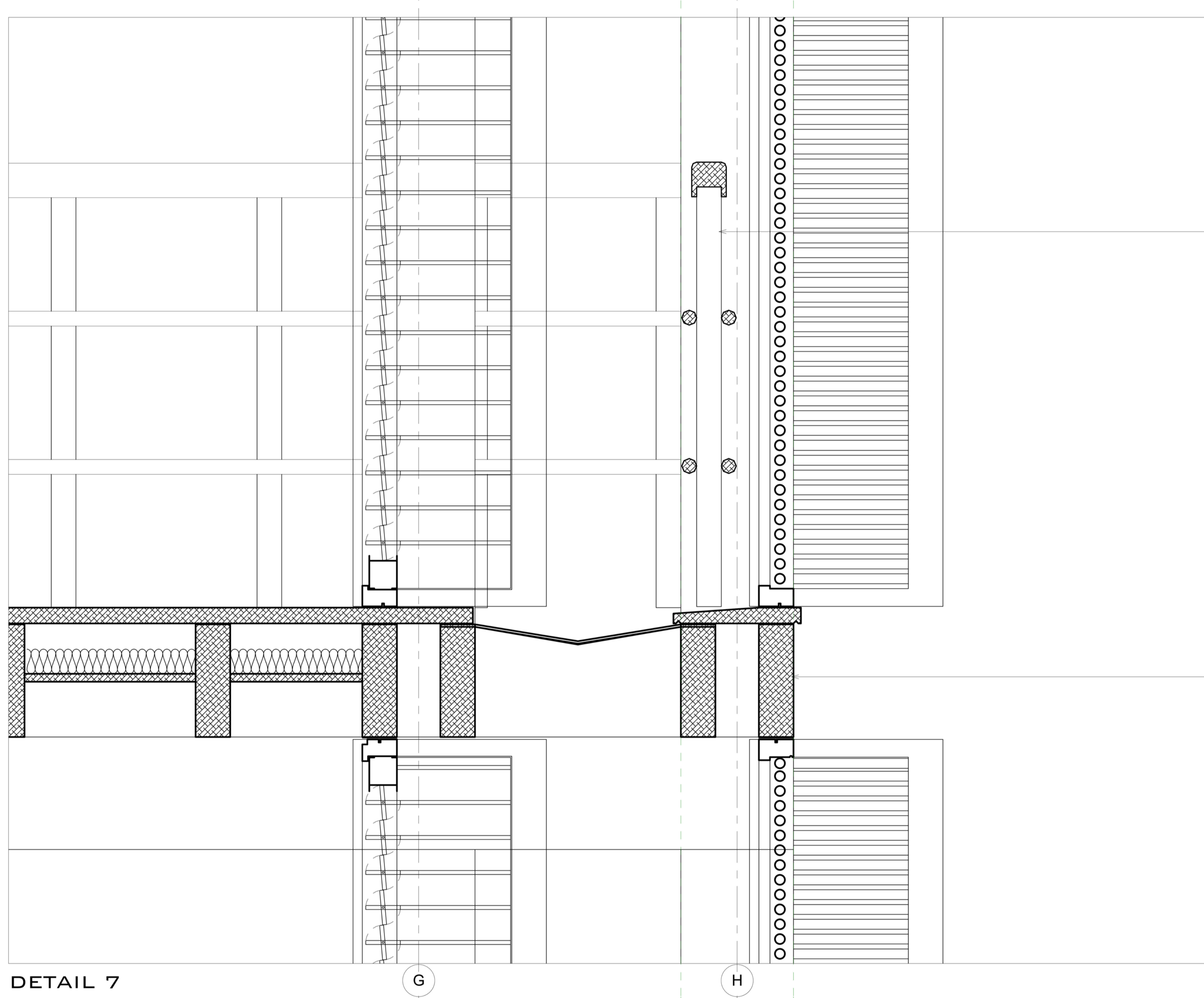
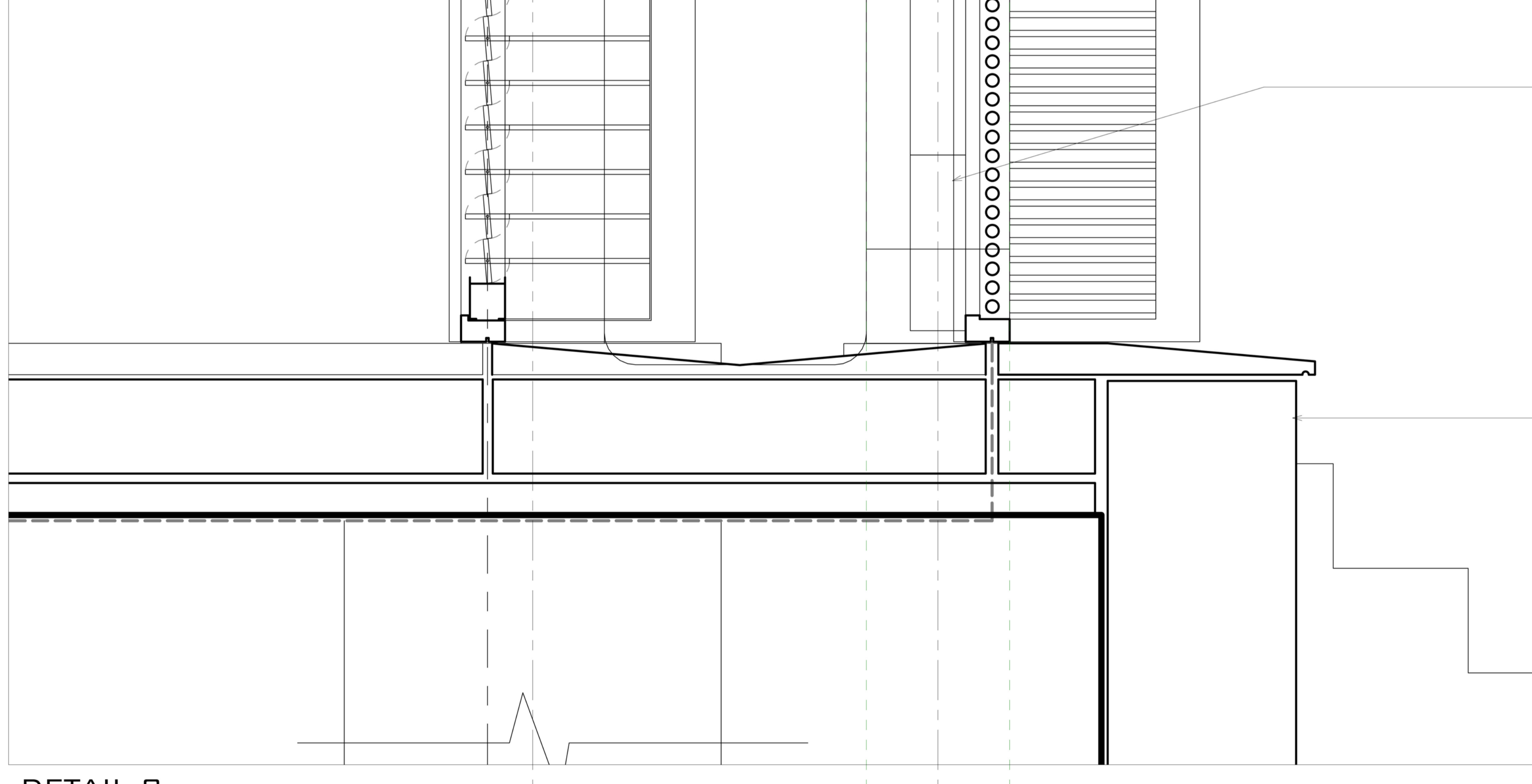


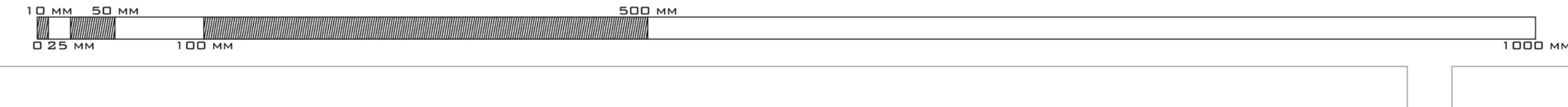
**DETAIL 6**  
 1: 5 - 1/9/AD



**DETAIL 7**  
 1: 5 - 2/9/AD



**DETAIL 8**  
 1: 5 - 3/9/AD

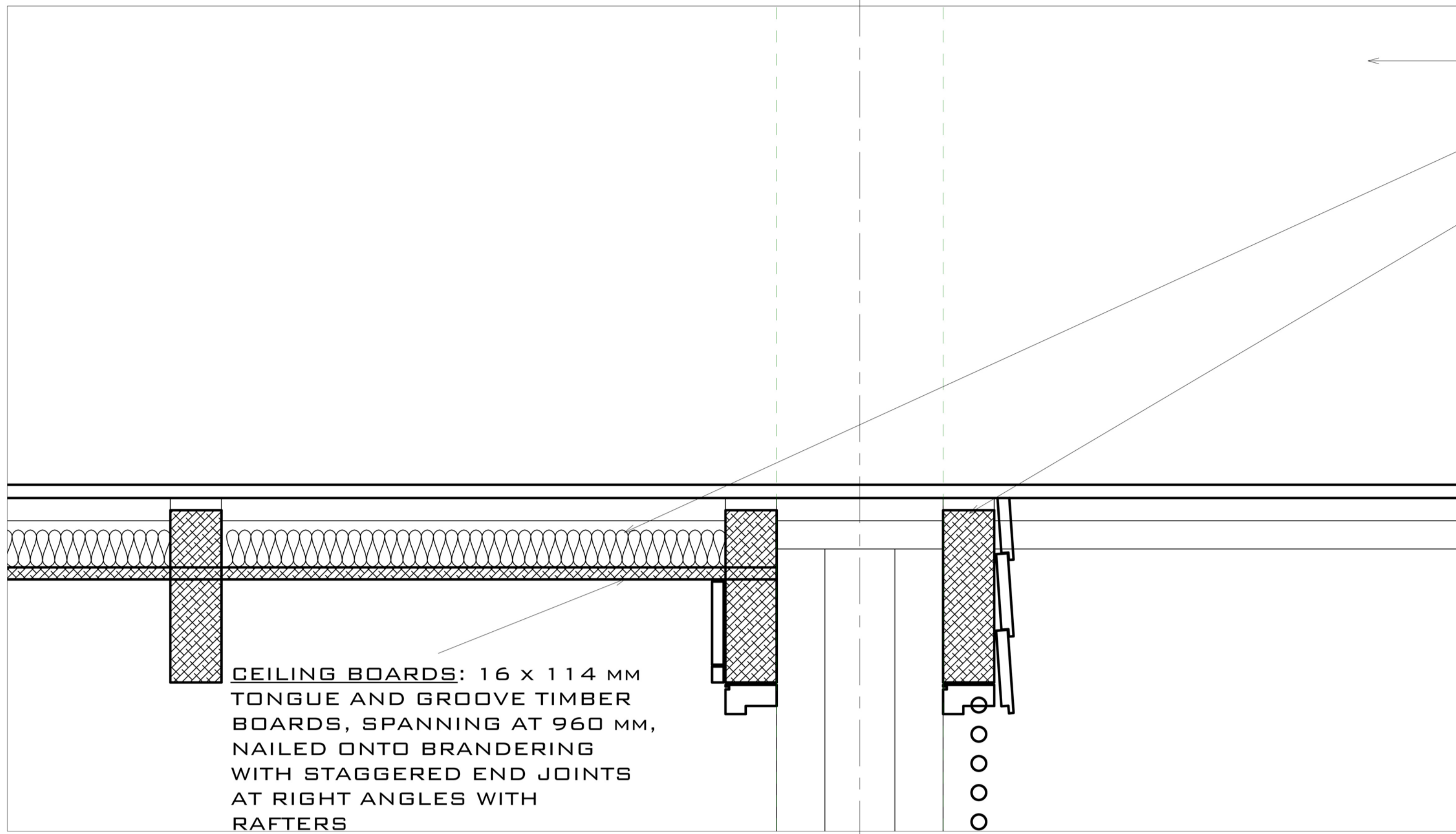


H  
E  
L  
L  
V  
I  
L  
L  
E  
M  
P  
O  
W  
E  
R  
M  
E  
H  
Z  
E  
C  
E  
H  
Z  
E  
R  
E

10. RENTABLE SPACES - 1.5 DETAILS - PART III

9

10 mm 50 mm 100 mm 500 mm 1000 mm

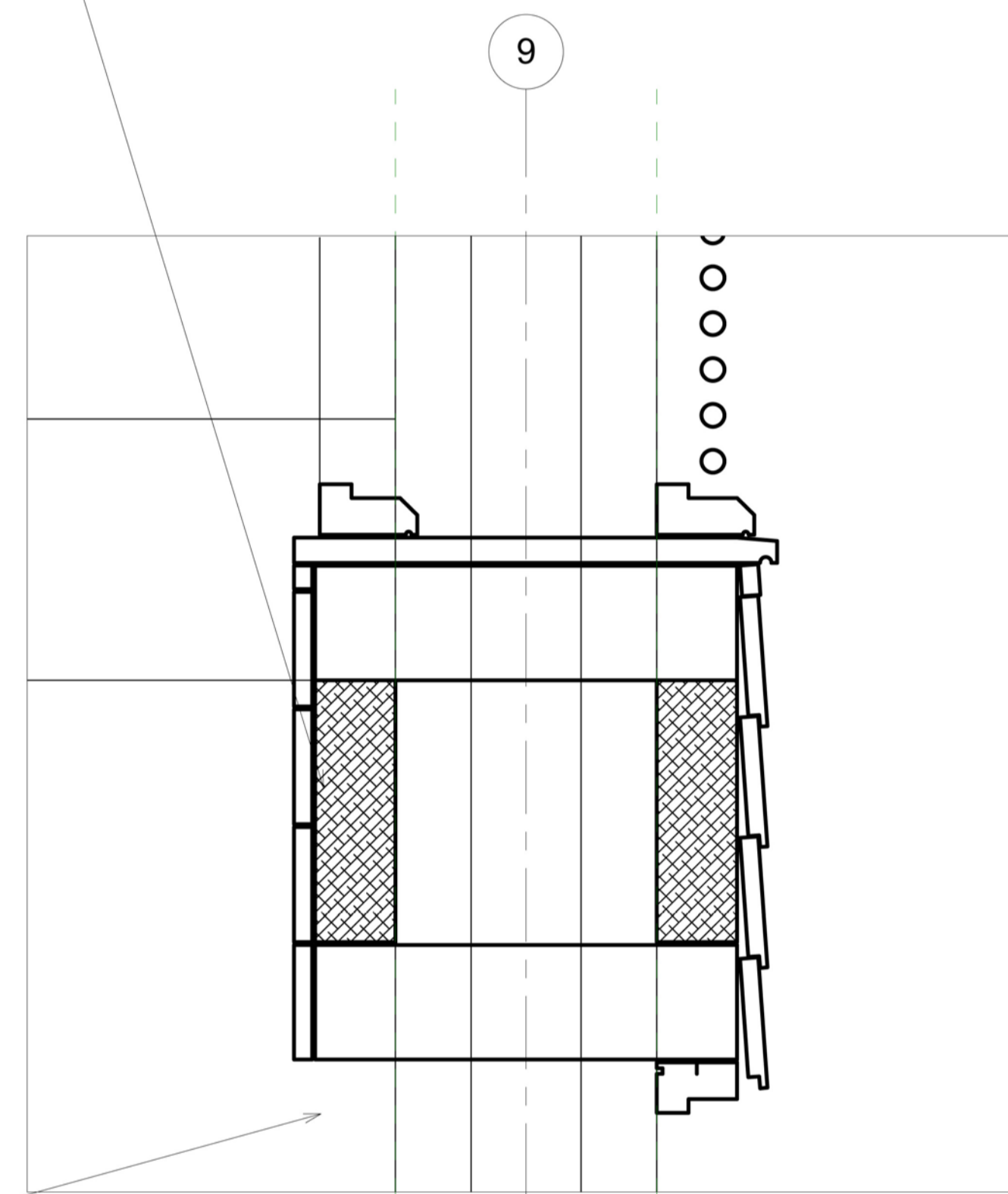


**SHEETING:** COR-TEN AZP (TM) PREPAINTED GALVALUME STEEL CORRUGATION, SPANNING AT 941 MM, FIXED ONTO PURLINS  
**ROOF INSULATION:** MINERAL FIBRE BLANKET FITTED IN BETWEEN 50 X 150 MM BATTENS/PURLINS (CEILING BRANDERING)  
**STRUCTURE 1:** TIMBER RAFTERS CONSISTING OF A DOUBLE BEAM SYSTEM OF 70 X 228 MM ELEMENTS, SPANNING AT 2824 MM, SPACED AT 2728 MM CENTRES  
**SUBSTRUCTURE 1 - PARALELL WITH MAIN RAFTERS:** 70 X 228 MM ELEMENTS, SPANNING AT 2820 MM, SPACED AT 910 MM CENTRES

**CEILING BOARDS:** 16 x 114 MM TONGUE AND GROOVE TIMBER BOARDS, SPANNING AT 960 MM, NAILED ONTO BRANDERING WITH STAGGERED END JOINTS AT RIGHT ANGLES WITH RAFTERS

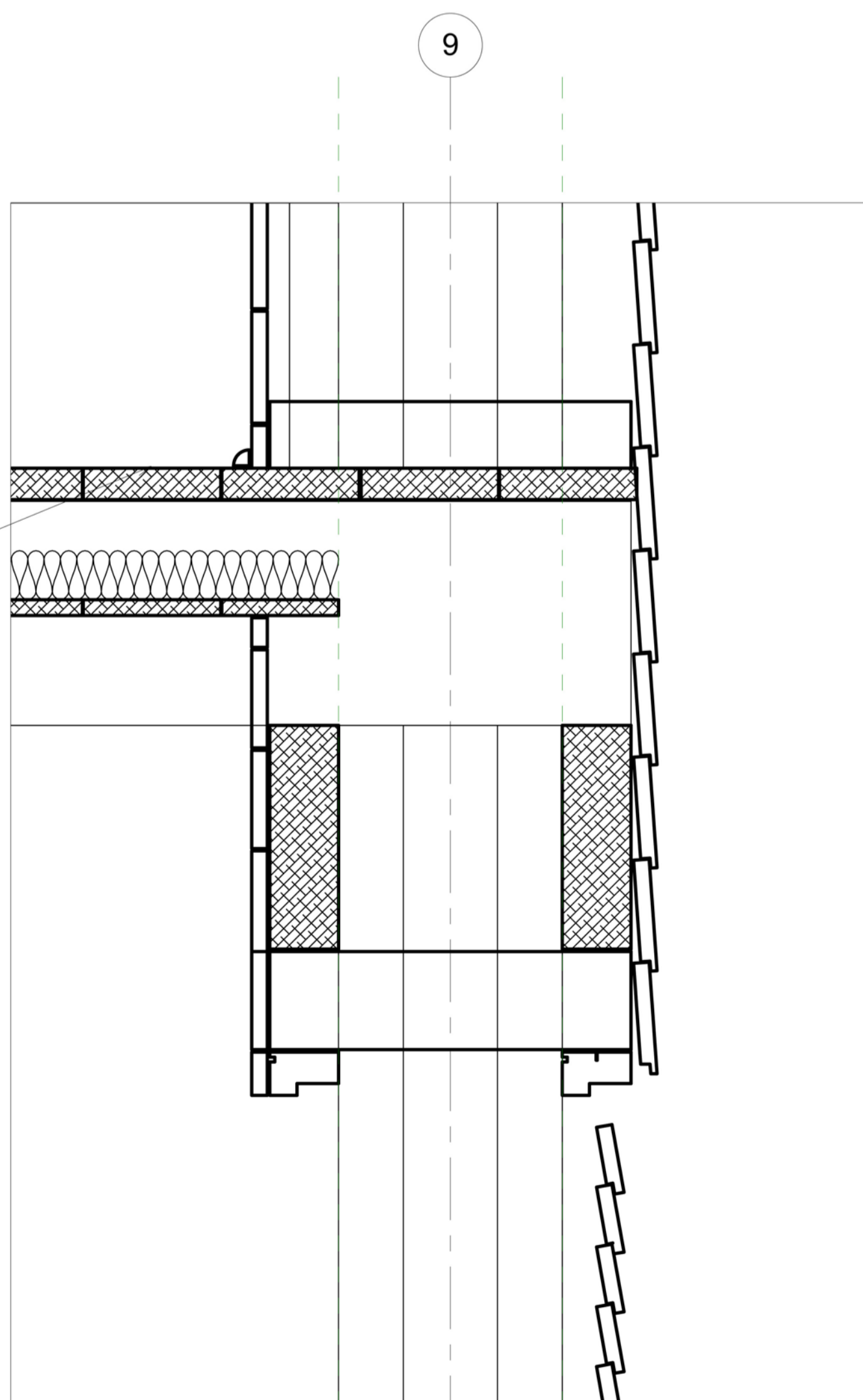
**DETAIL 10**  
1: 5 - 1/10/AO

**TIMBER POST-AND-LINTEL STRUCTURAL TYPOLOGY**  
**STRUCTURAL TIMBER:** NANTO (LOCAL NAME) - FAUCHERA SPP., DENSE AND HARD WOOD, WITH A MEAN DENSITY OF 12%, HUMIDITY LEVEL OF 1.03, AND MEAN HARDNESS OF 9, NO INDUSTRIAL TREATMENT REQUIRED, ONLY APPLICATION OF TWO LAYERS OF LASURE DURING CONSTRUCTION OR SEMI-TRANSPARENT BROWN IRON OXIDE PIGMENT PENETRATING STAIN  
**STRUCTURAL SIZES:** DOUBLE-COLUMN AND DOUBLE-BEAM SYSTEMS, MADE OUT OF 70 X 228 MM ELEMENTS, SPANNING AT 2728 MM, SPACED AT 2728 MM CENTRES



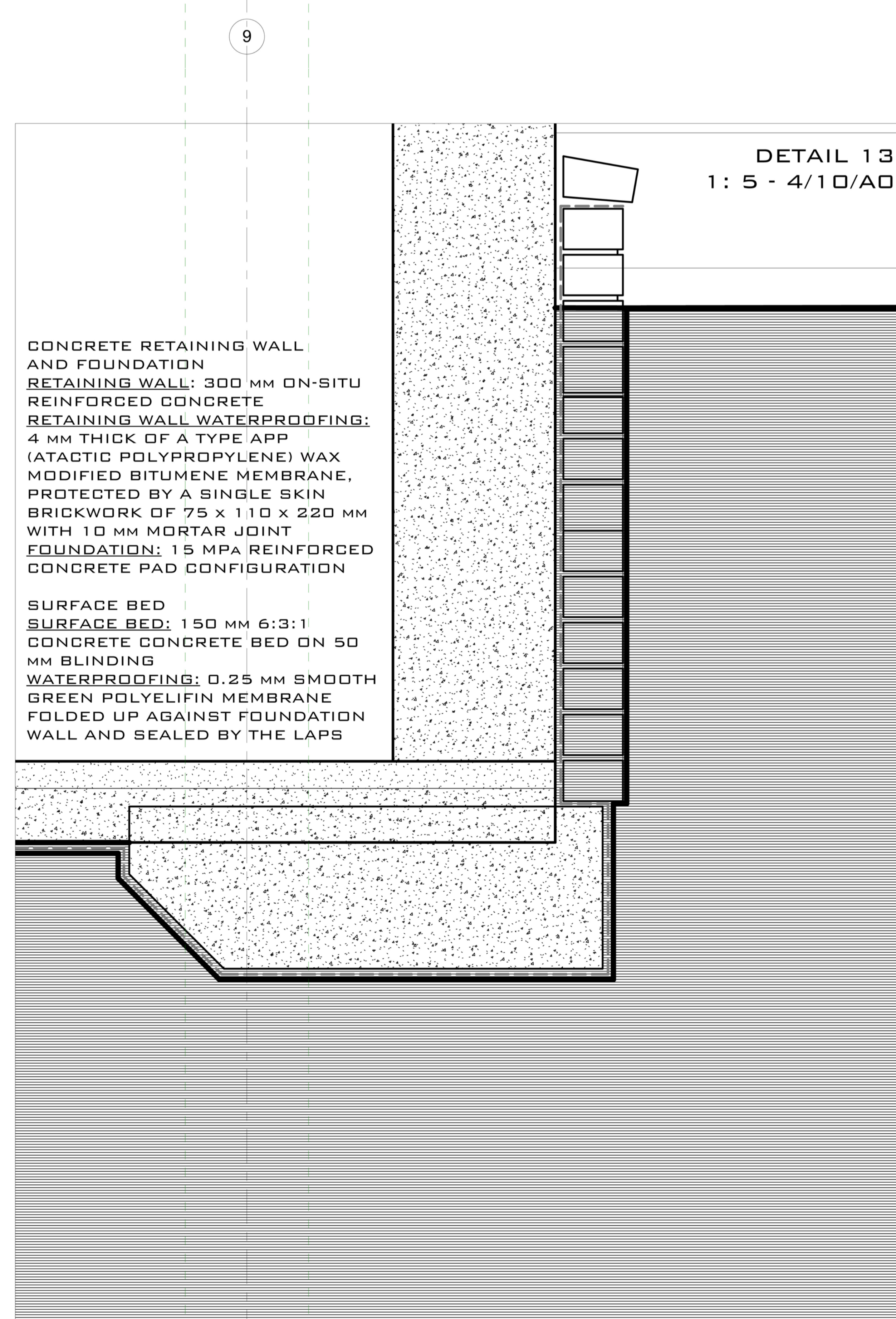
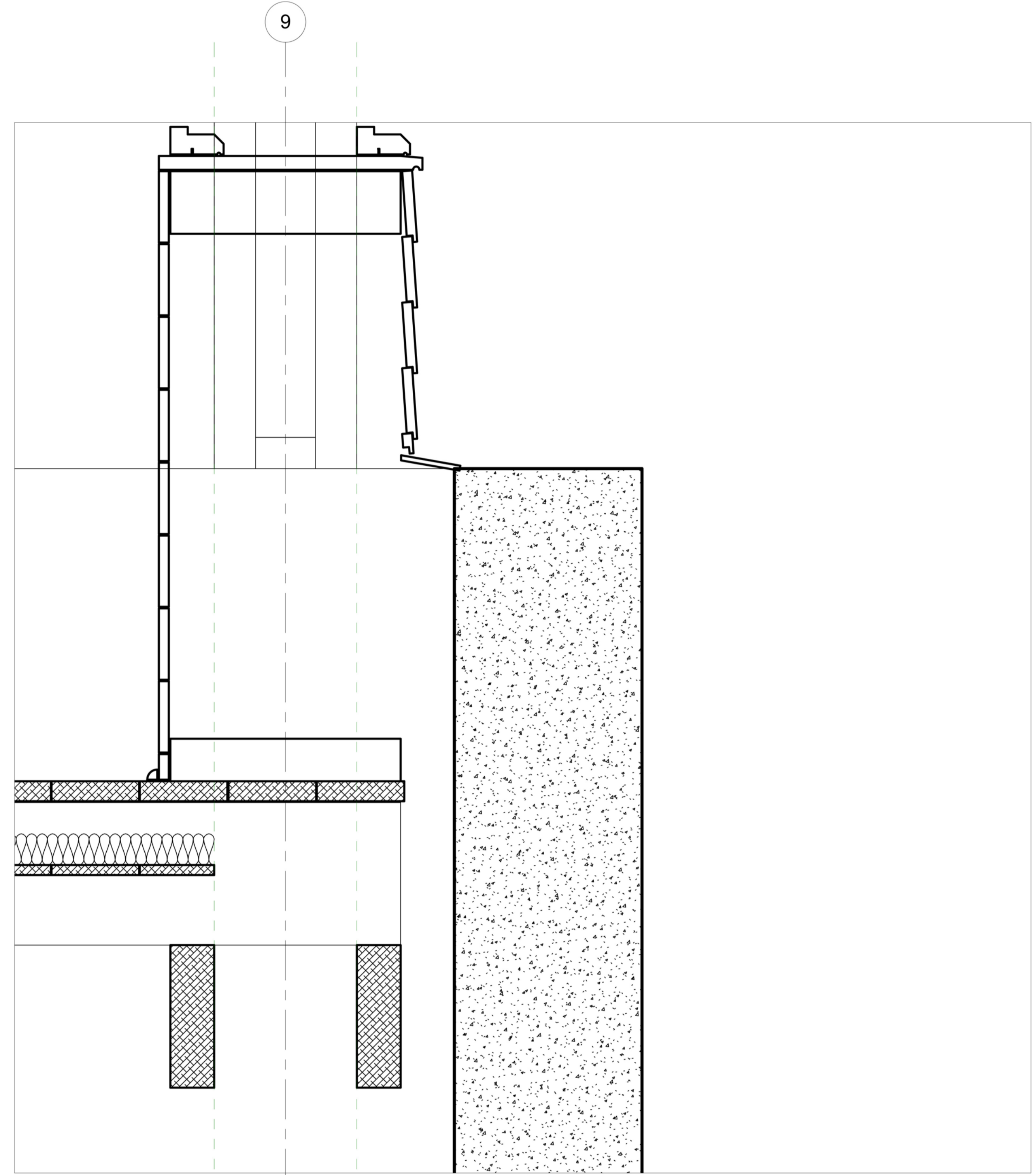
**DETAIL 11**  
1: 5 - 2/10/AO

**NORTH AND SOUTH OPENINGS:**  
**TIMBER FRAMEWORK:** MODULAR WIDTH OF 417 MM, CONSISTING OF 70 X 44 MM ELEMENTS OVERALL, MADE OUT OF MERBAU - CAESALPINIACEA, INTSIA BIJUGA, AFZELIA BIJUGA, INTSIA PALEMBANICA -  
**OUTSIDE OPENINGS:** WITH 12 MM OPERABLE TIMBER LOUVRES TO ROTATE FROM 0 TO 85 DEGREES, ON ALUMINIUM SUBFRAME  
**INSIDE OPENINGS:** WITH 8 MM LAMINATED GLAZING FRAMED IN ALUMINIUM SUBFRAMES TO ALLOW THE GLASS LOUVRES TO ROTATE FROM 0 TO 85 DEGREES  
**WEATHERPROOFING:** 16 MM TIMBER PROFILE WITH A DRIP AS OPENING SILL



**SUSPENDED TIMBER FLOOR**  
**FLOOR FINISH:** 32 x 114 MM TIMBER TONGUE AND GROOVE FLOOR BOARDS IN THE EAST-WEST DIRECTION  
**FLOOR JOISTS & CEILING BRANDERINGS:** 70 x 228 MM HARDWOOD, SPANNING AT 2500 MM, SPACED AT 450 MM CENTRES, TO BE CLADDED BY TIMBER FLOOR BOARDS ON TOP AND TIMBER CEILING BOARDS AT THE BOTTOM  
**INSULATION:** 50 MM GLASS WOOL INSULATION BLANKET UNDERNEATH FLOOR BOARDS  
**CEILING:** 16 x 114 MM TIMBER TONGUE AND GROOVE BOARDS SUSPENDED FROM BRANDERINGS  
**SERVICE SPACE:** 490 MM CEILING LEFT OVER SPACE FOR ELECTRICAL AND PLUMBING USAGE

**DETAIL 12**  
1: 5 - 3/10/AO



**CONCRETE RETAINING WALL AND FOUNDATION**  
**RETAINING WALL:** 300 MM ON-SITU REINFORCED CONCRETE  
**RETAINING WALL WATERPROOFING:** 4 MM THICK OF A TYPE APP (ATACTIC POLYPROPYLENE) WAX MODIFIED BITUMENE MEMBRANE, PROTECTED BY A SINGLE SKIN BRICKWORK OF 75 X 110 X 220 MM WITH 10 MM MORTAR JOINT  
**FOUNDATION:** 15 MPA REINFORCED CONCRETE PAD CONFIGURATION

**SURFACE BED**  
**SURFACE BED:** 150 MM 6:3:1 CONCRETE BED ON 50 MM BLINDING  
**WATERPROOFING:** 0.25 MM SMOOTH GREEN POLYELIFIN MEMBRANE FOLDED UP AGAINST FOUNDATION WALL AND SEALED BY THE LAPS

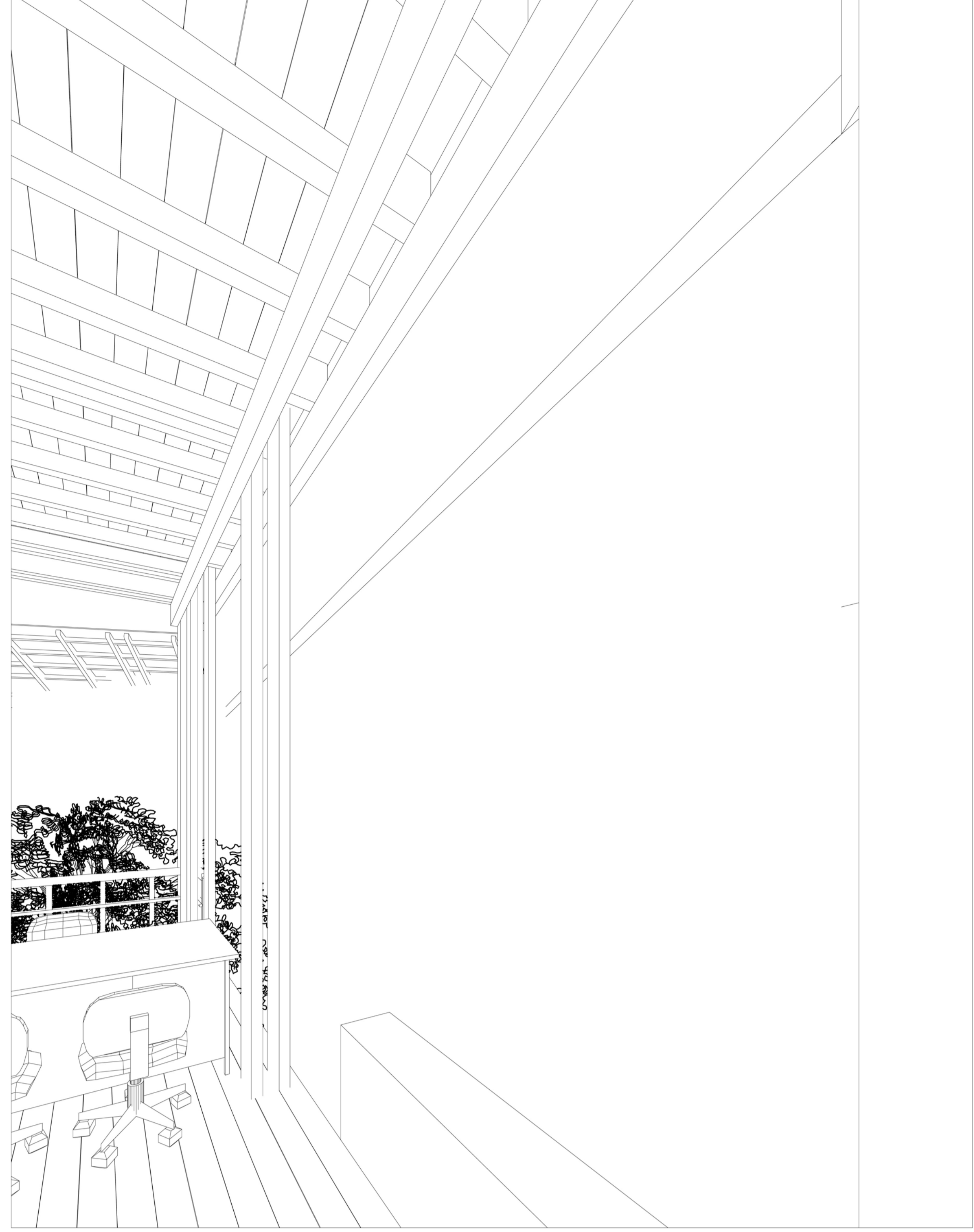
**DETAIL 13**  
1: 5 - 4/10/AO

**DETAIL 14**  
1: 5 - 5/10/AO

H  
E  
L  
L  
V  
I  
L  
L  
E  
M  
P  
O  
W  
E  
R  
M  
E  
N  
Z  
E  
R  
E



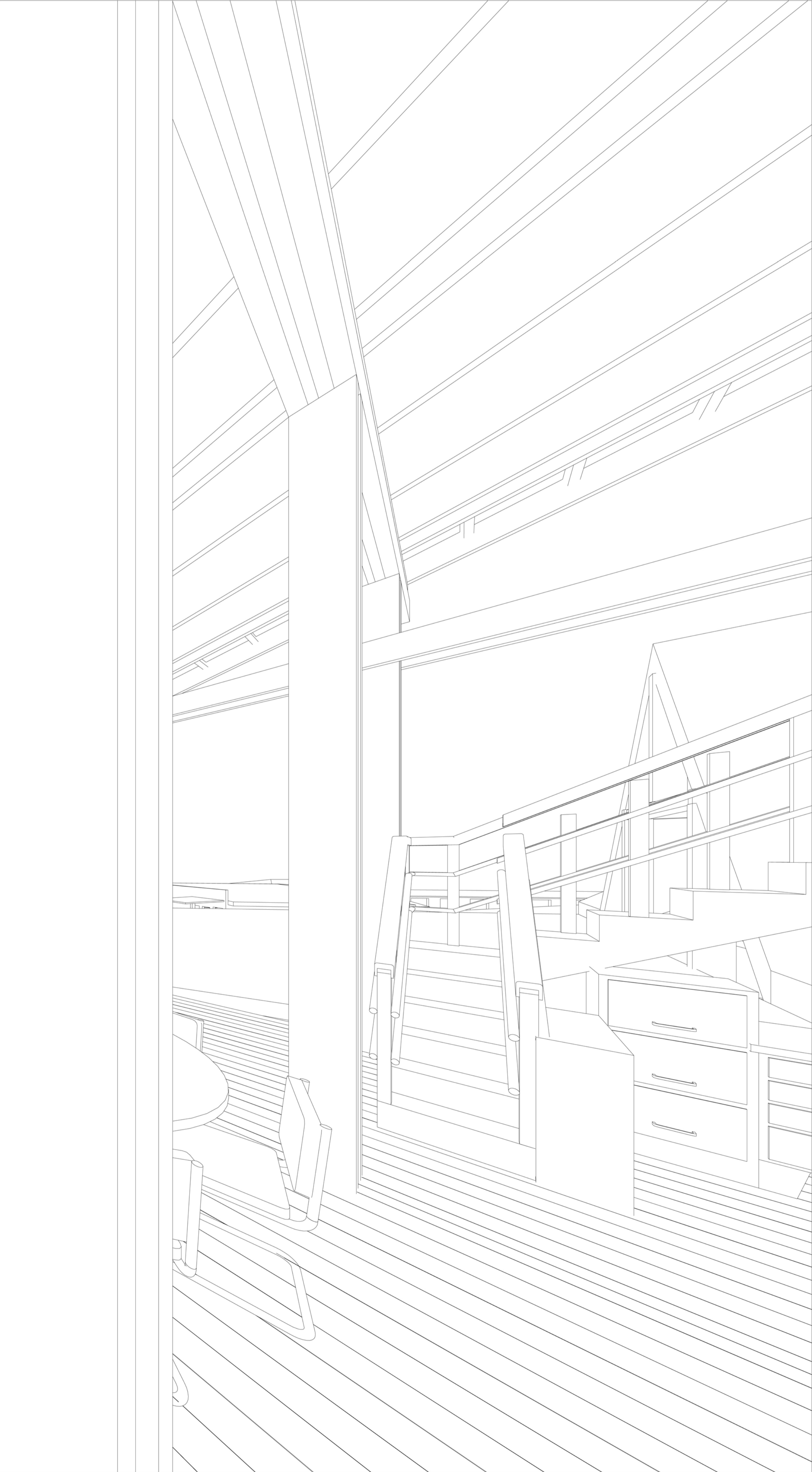
GROUND FLOOR EAST SCREENS  
1/11/AD



OFFICE SOUTH DRY WALL OPENING  
2/11/AD

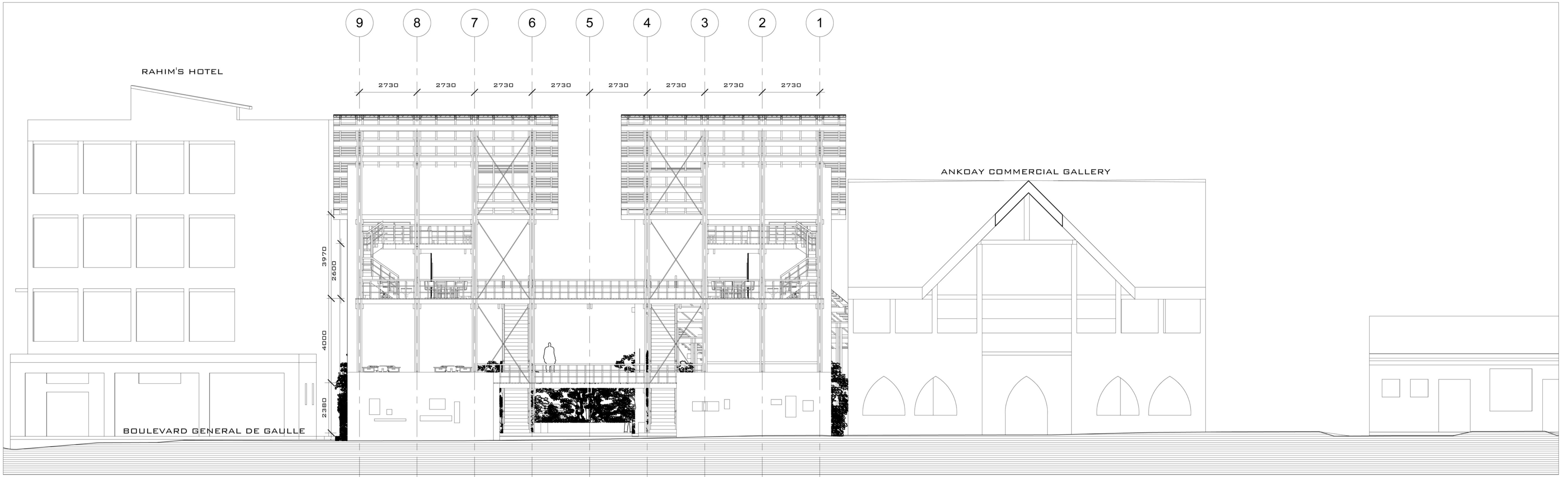


SOUTH BLOCK - STUDIO APARTMENT'S CIRCULATION SCREENS  
3/11/AD

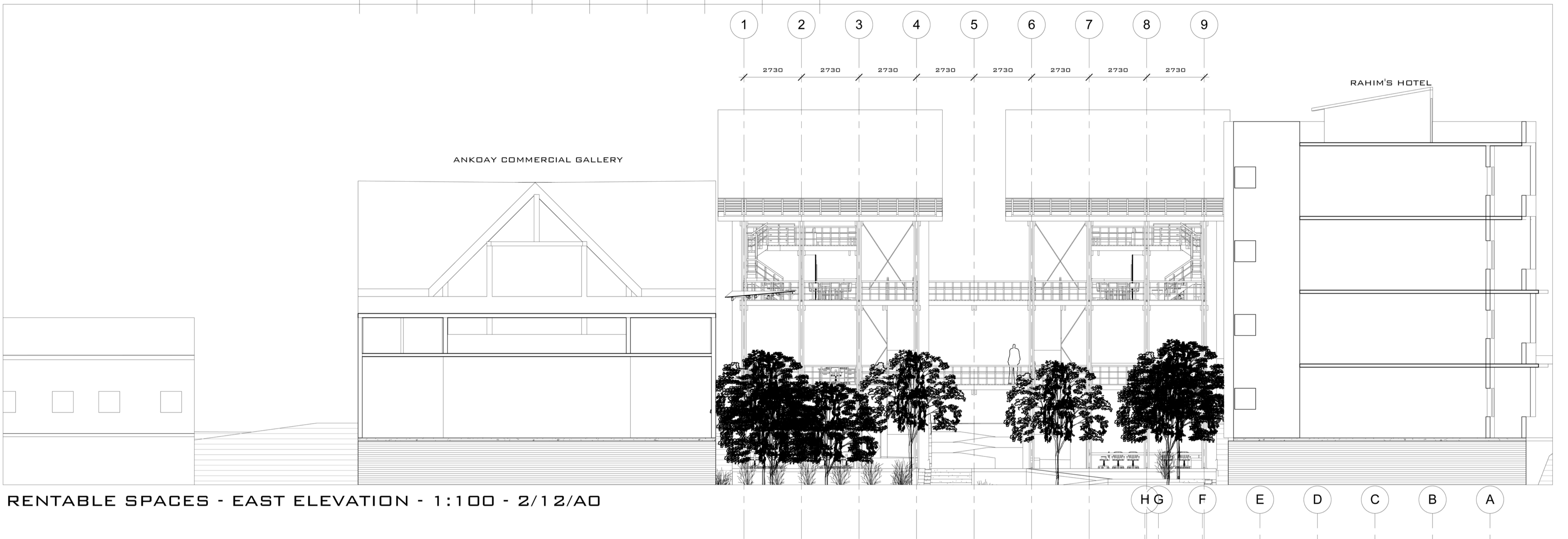


I  
E  
E  
E  
V  
E  
E  
E  
M  
P  
O  
W  
E  
R  
M  
E  
M  
Z  
E  
C  
E  
R  
E  
R

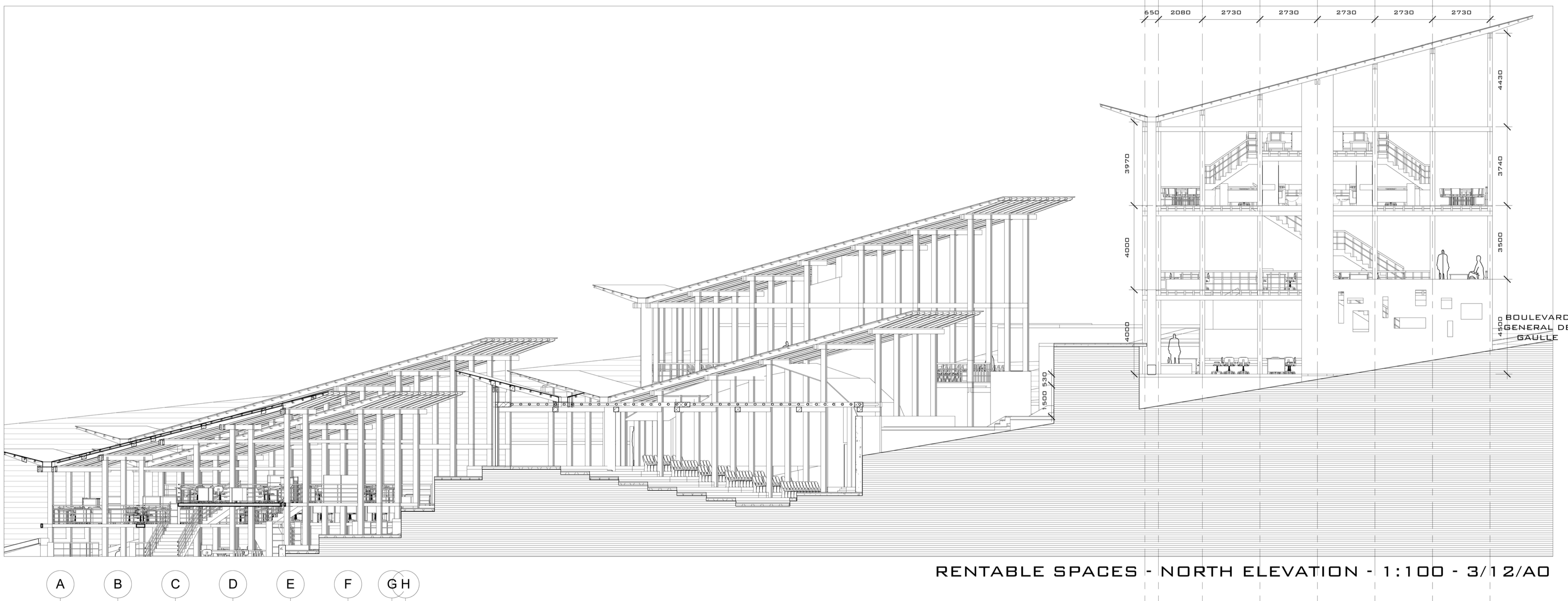
# 12. RENTABLE SPACES - 1.100 ELEVATIONS



RENTABLE SPACES - WEST ELEVATION - 1:100 - 1/12/AD



RENTABLE SPACES - EAST ELEVATION - 1:100 - 2/12/AD



RENTABLE SPACES - NORTH ELEVATION - 1:100 - 3/12/AD



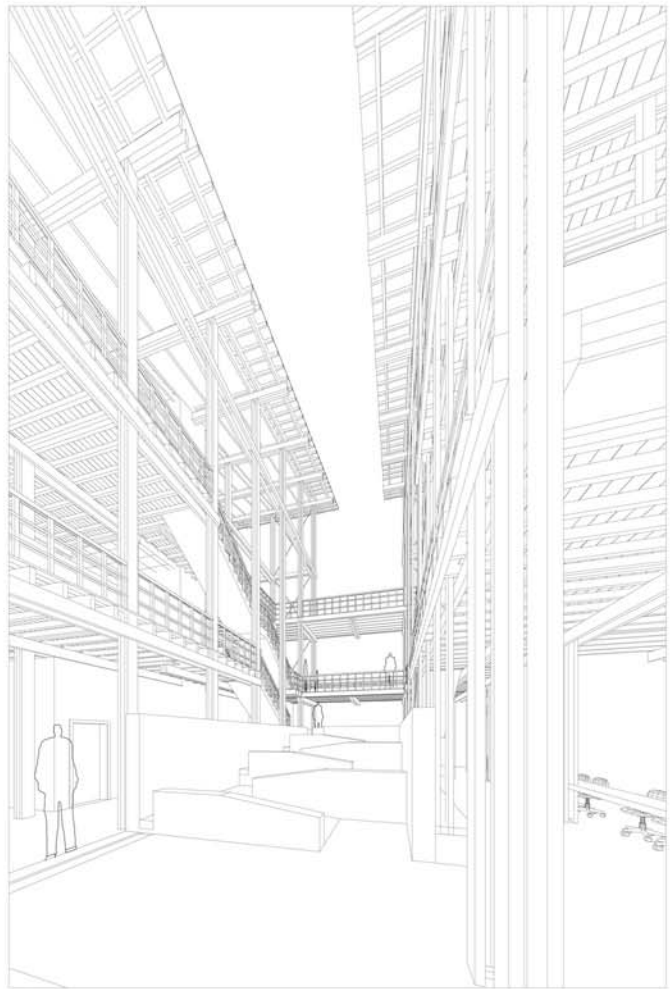
RENTABLE SPACES - SOUTH ELEVATION - 1:100 - 4/12/AD

H  
E  
L  
L  
V  
I  
L  
L  
E  
E  
M  
P  
O  
W  
E  
R  
M  
E  
N  
Z  
E  
R  
E

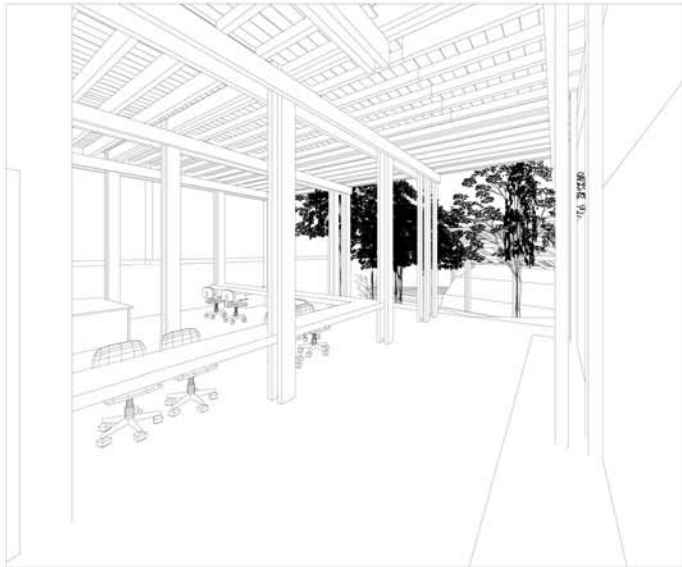
13. RENTABLE SPACES - INTERIOR PERSPECTIVE VIEWS



VIEW FROM THE ENTRY STOEP INTO THE CIRCULATION AREA - 1/13/AD



VIEW OF THE CIRCULATION SPACE FROM THE GROUND FLOOR - 4/13/AD



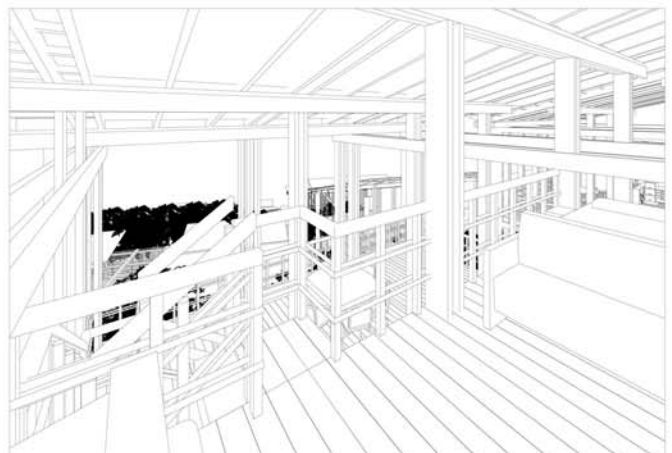
VIEW OF THE EMPLOYMENT AGENCY'S CONSULTATION DESKS AND WAITING AREA - 2/13/AD



VIEW OF ONE OF THE FIRST FLOOR OFFICES - 5/13/AD



VIEW OF A STUDIO APARTMENT'S DOUBLE-VOLUME DINING AND STUDY AREAS - 3/13/AD



VIEW FROM ONE OF THE STUDIO APARTMENTS' MEZZANINE - 6/13/AD

H  
E  
L  
L  
V  
I  
L  
L  
E  
E  
M  
P  
O  
W  
E  
R  
M  
E  
N  
T  
C  
E  
N  
T  
R  
E