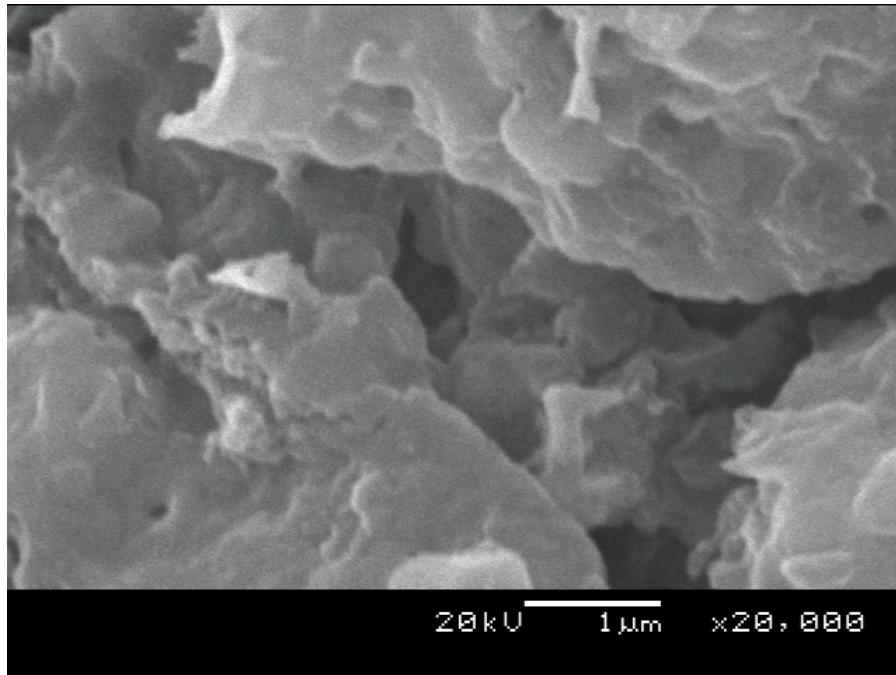


## APPENDIX B

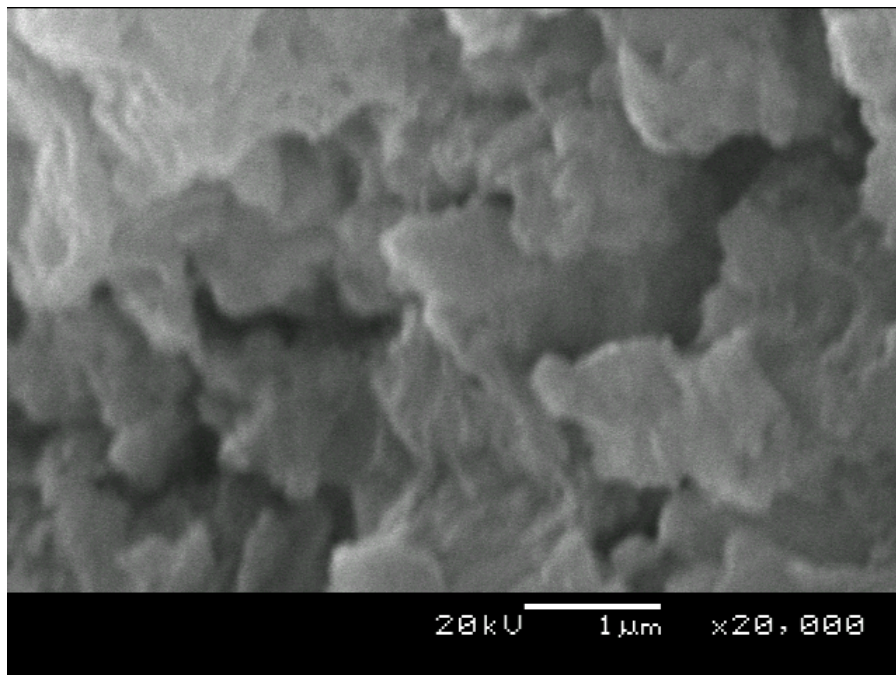
### SEM IMAGES FOR PILOT MIXES

Appendix B-1: 28 days of curing

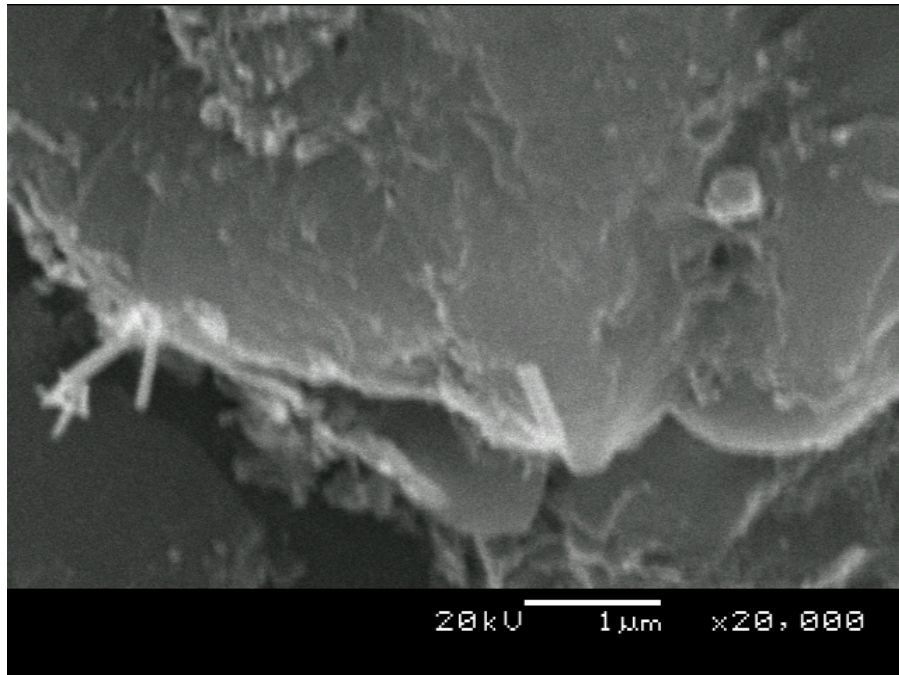
Arusha pozzolan mixes:



Arusha pozzolan: 60% Saturation (28 days)

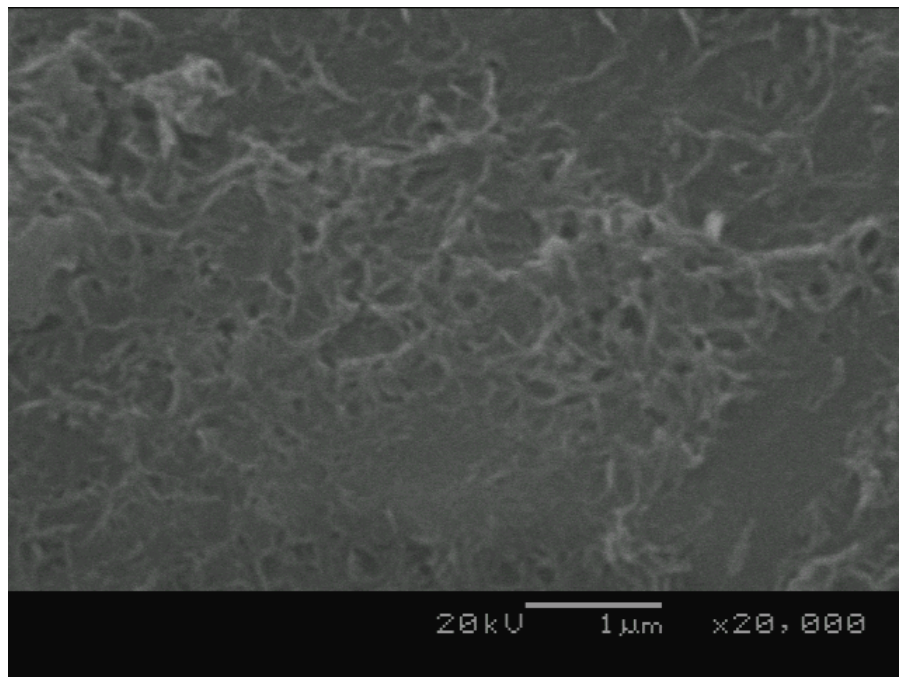


Arusha pozzolan: 80% Saturation (28 days)

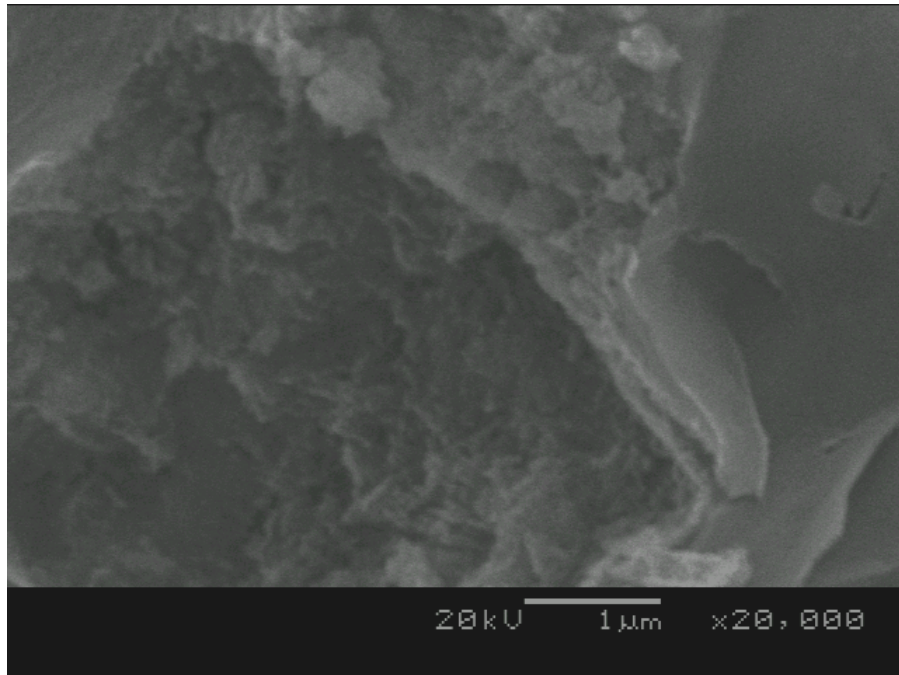


Arusha pozzolan: 100% Saturation (28 days)

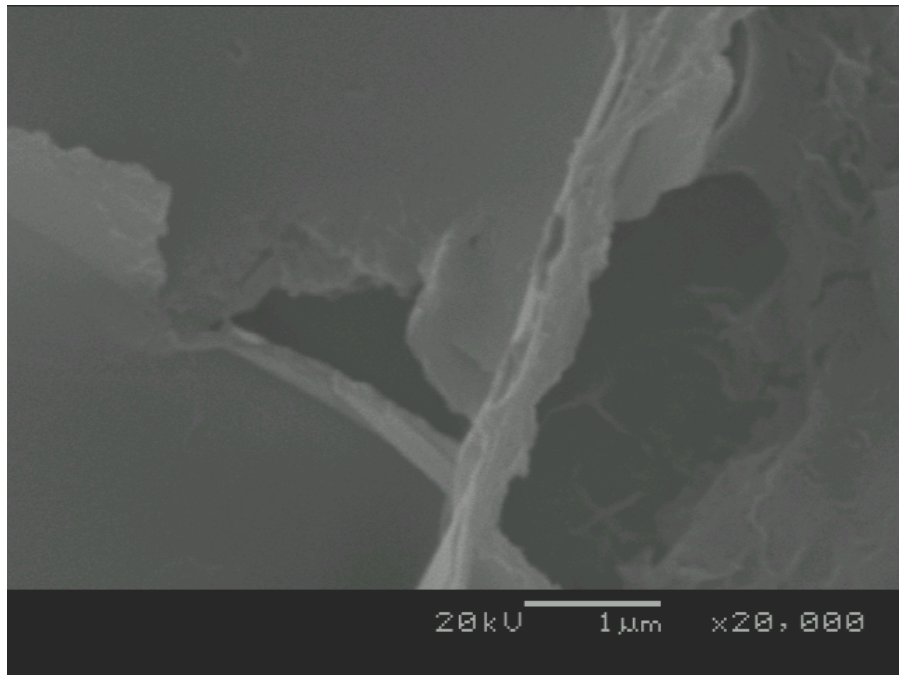
**Mbeya pozzolan mixes:**



Mbeya pozzolan: 60% Saturation (28 days)

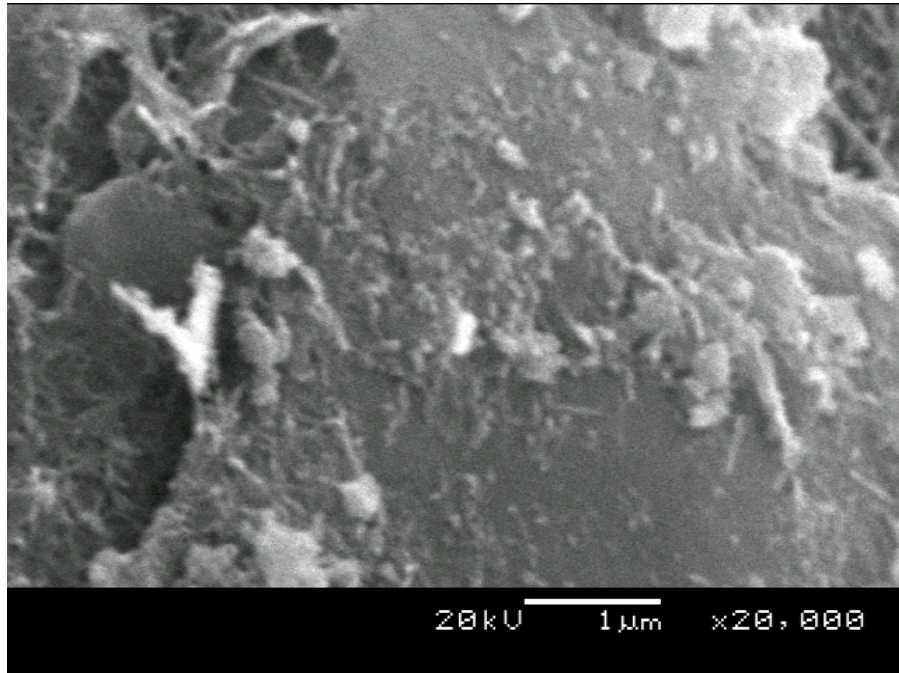


Mbeya pozzolan: 80% Saturation (28 days)

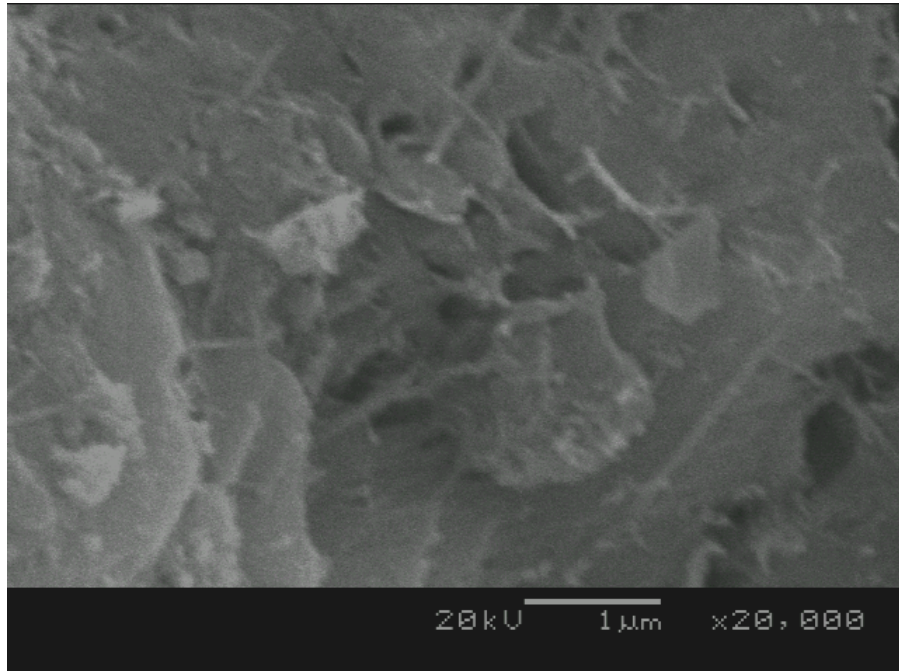


Mbeya pozzolan: 100% Saturation (28 days)

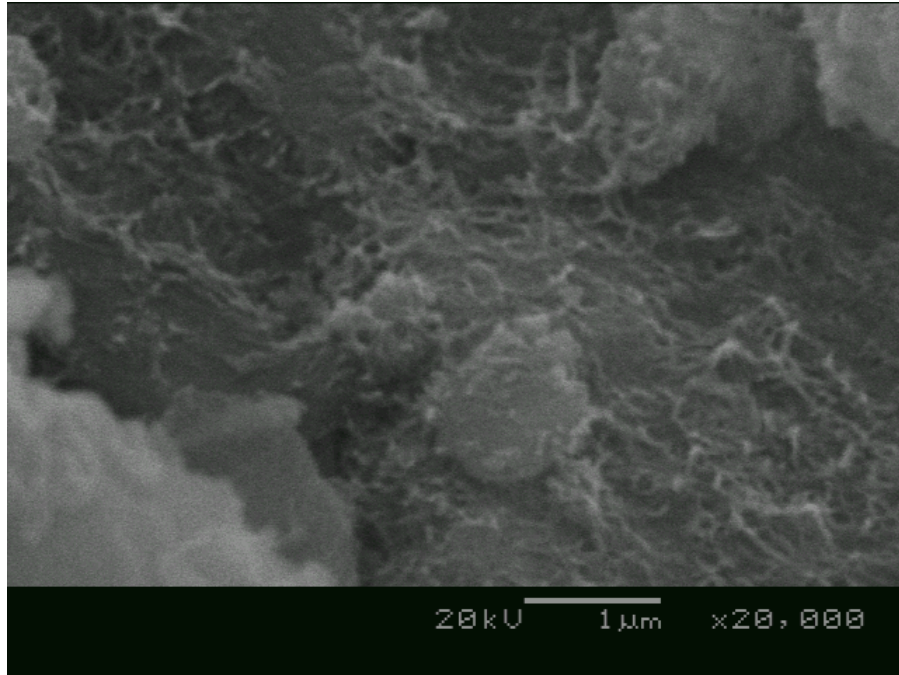
**Cement mixes:**



Cement: 60% Saturation (28 days)



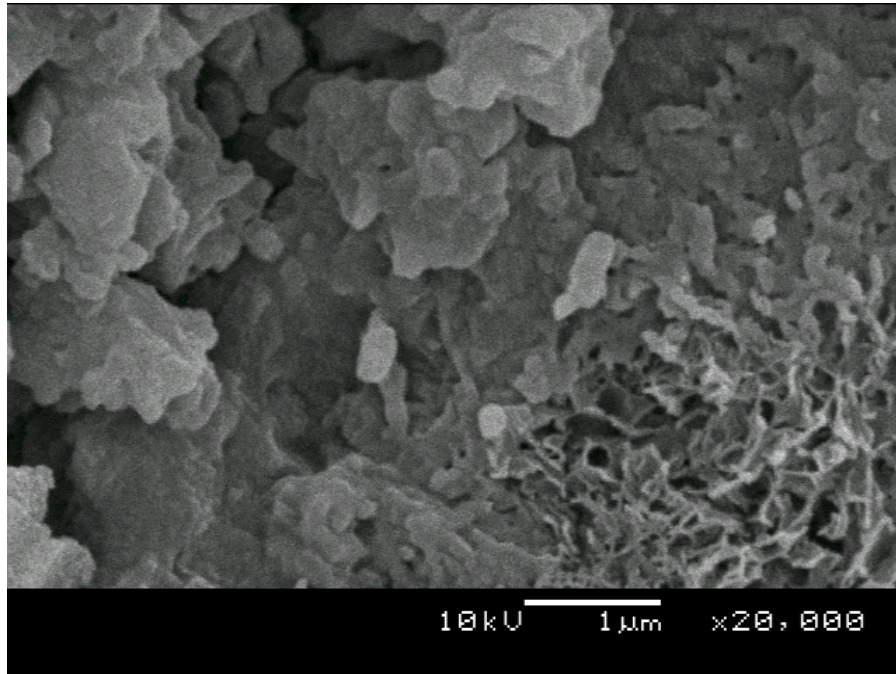
Cement: 80% Saturation (28 days)



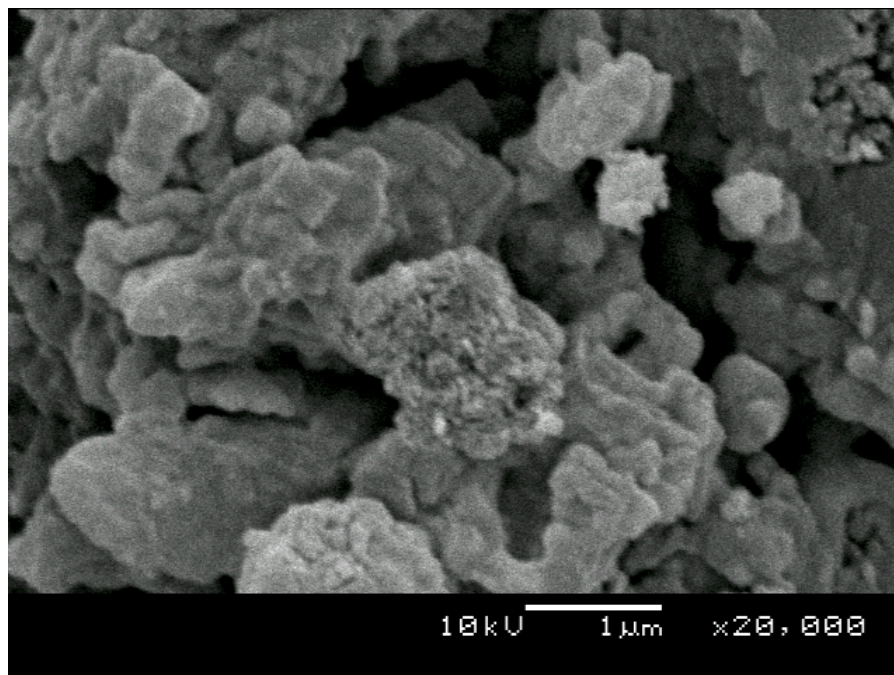
Cement: 100% Saturation (28 days)

**Appendix B-2: 90 days of curing**

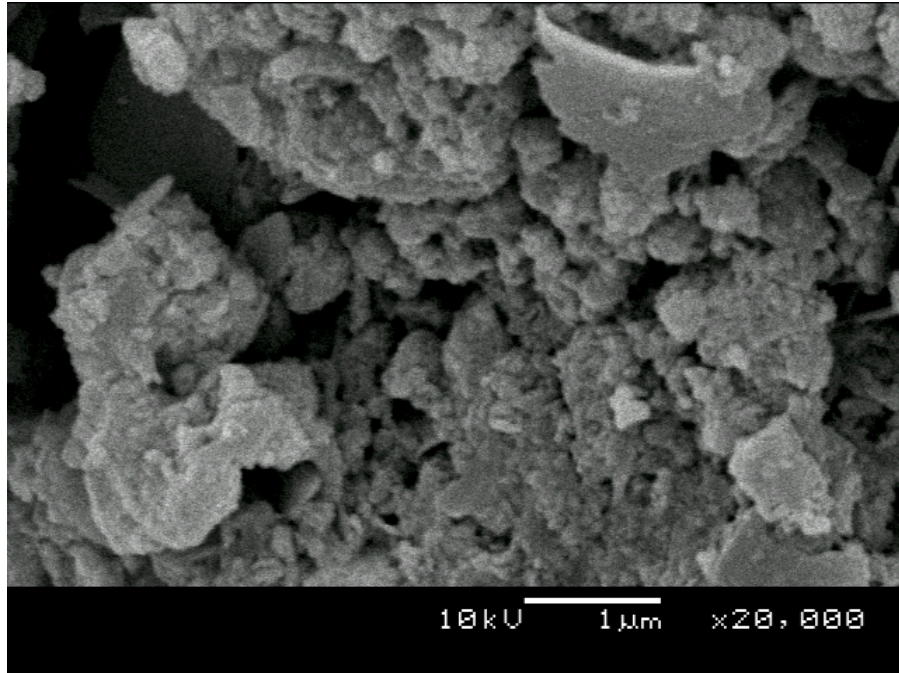
**Arusha pozzolan mixes:**



Arusha pozzolan: 60% Saturation (90 days)

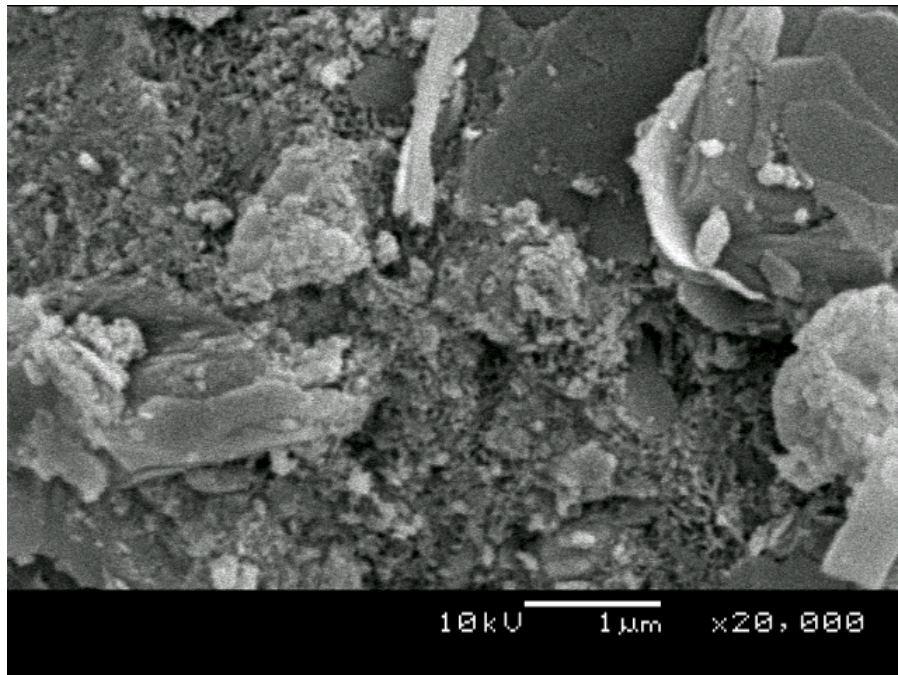


Arusha pozzolan: 80% Saturation (90 days)

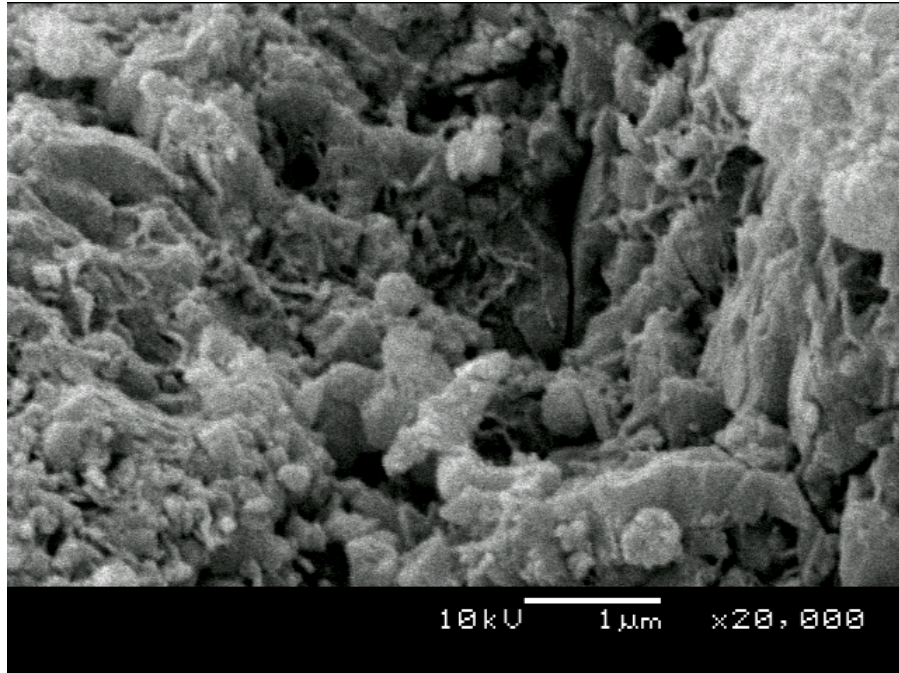


Arusha pozzolan: 100% Saturation (90 days)

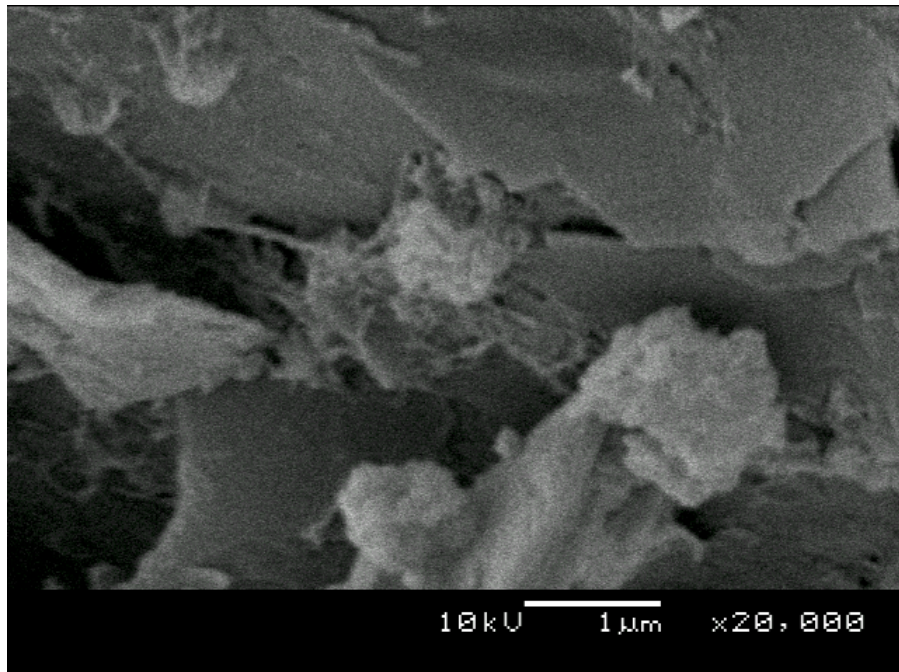
**Mbeya pozzolan mixes:**



Mbeya pozzolan: 60% Saturation (90 days)



Mbeya pozzolan: 80% Saturation (90 days)

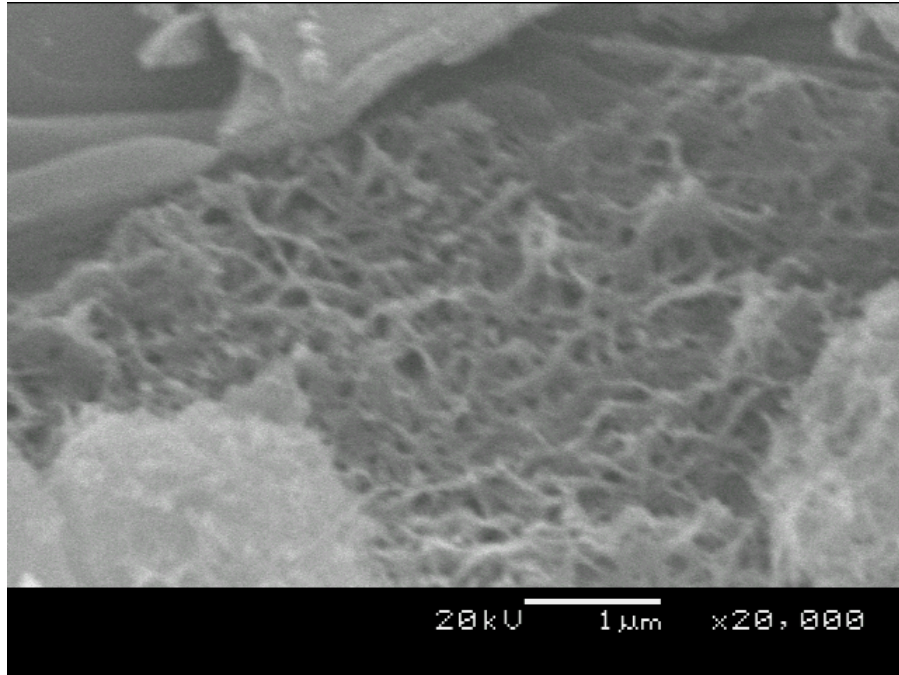


Mbeya pozzolan: 100% Saturation (90 days)

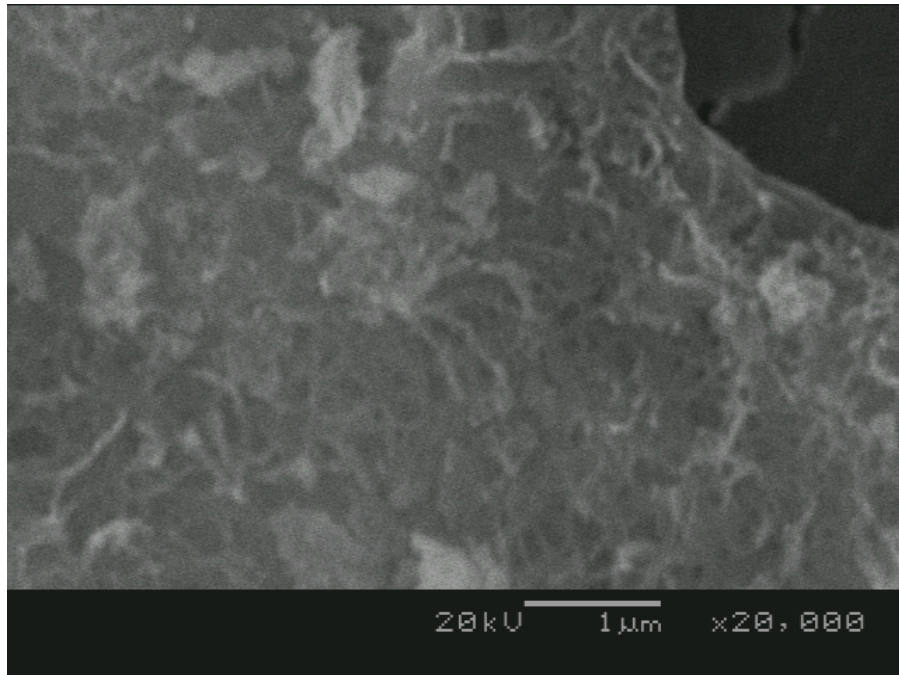


**APPENDIX B2**  
**SEM IMAGES FOR PILOT MIXES**

**Cement mixes:**

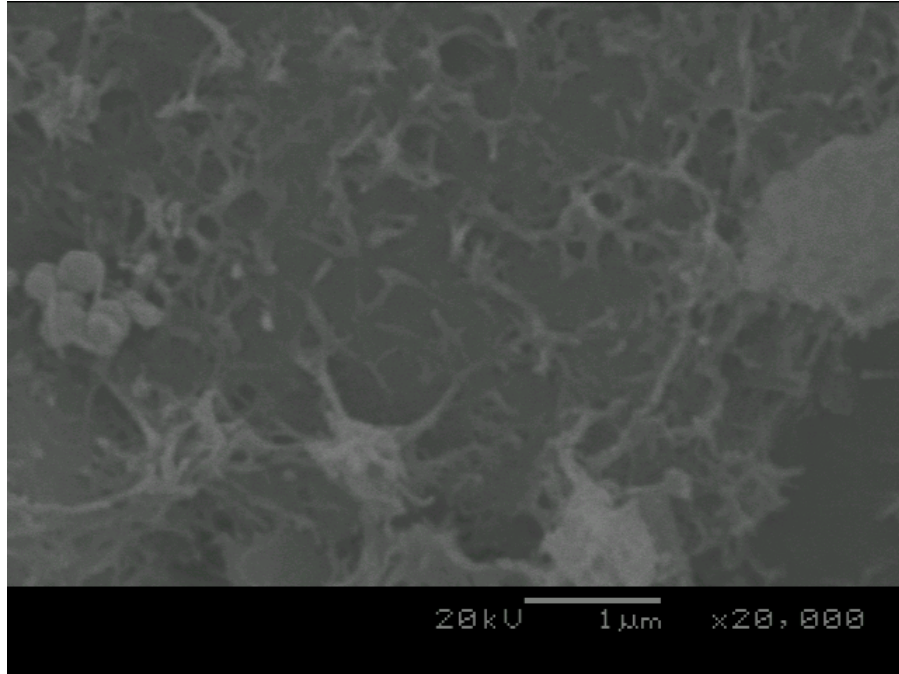


Cement: 60% Saturation (90 days)



Cement: 80% Saturation (90 days)

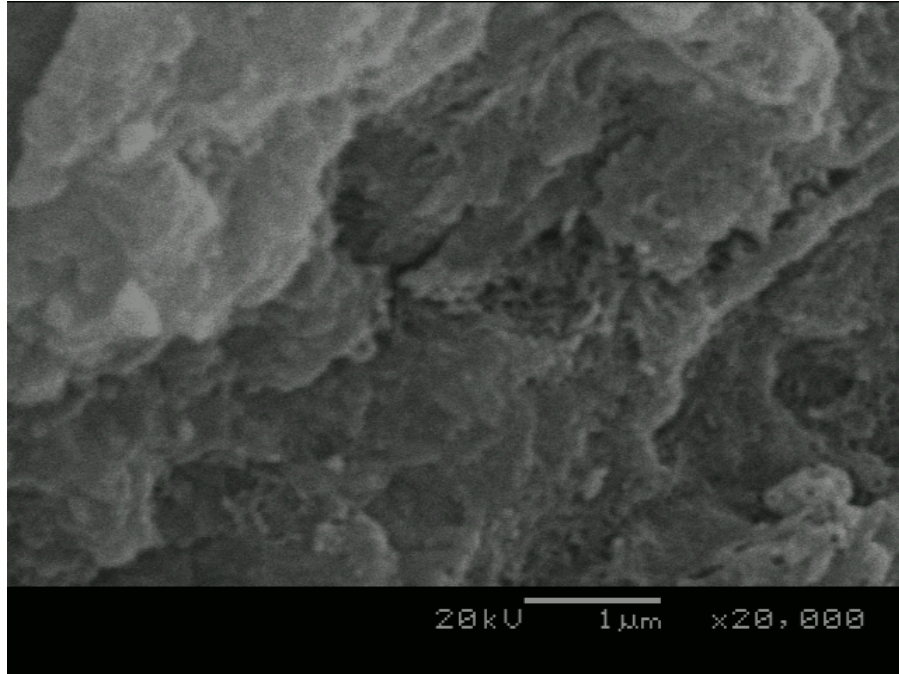
B-10



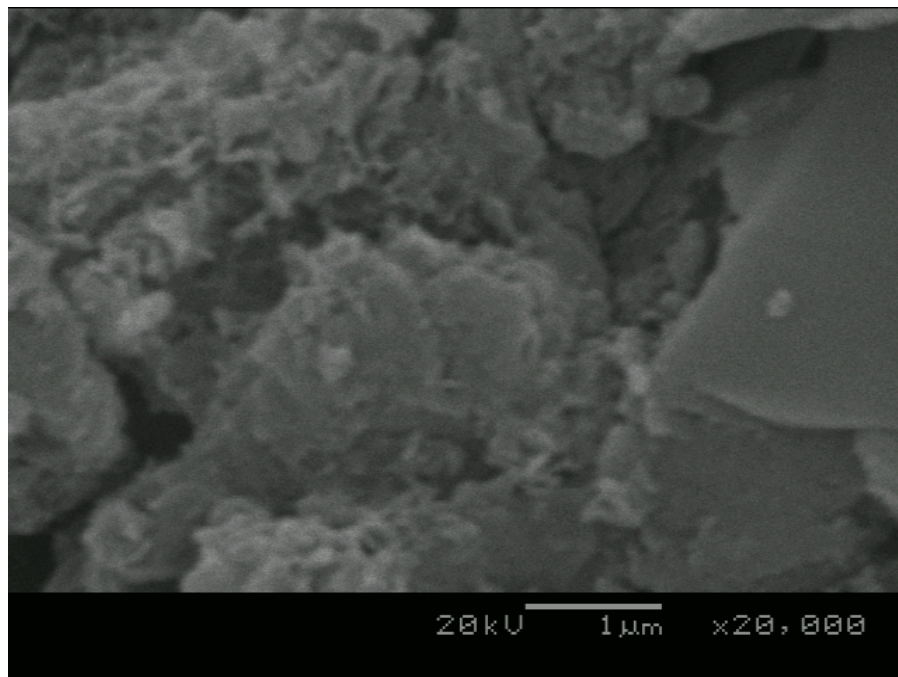
Cement: 100% Saturation (90 days)

**Appendix B-3: 180 days of curing**

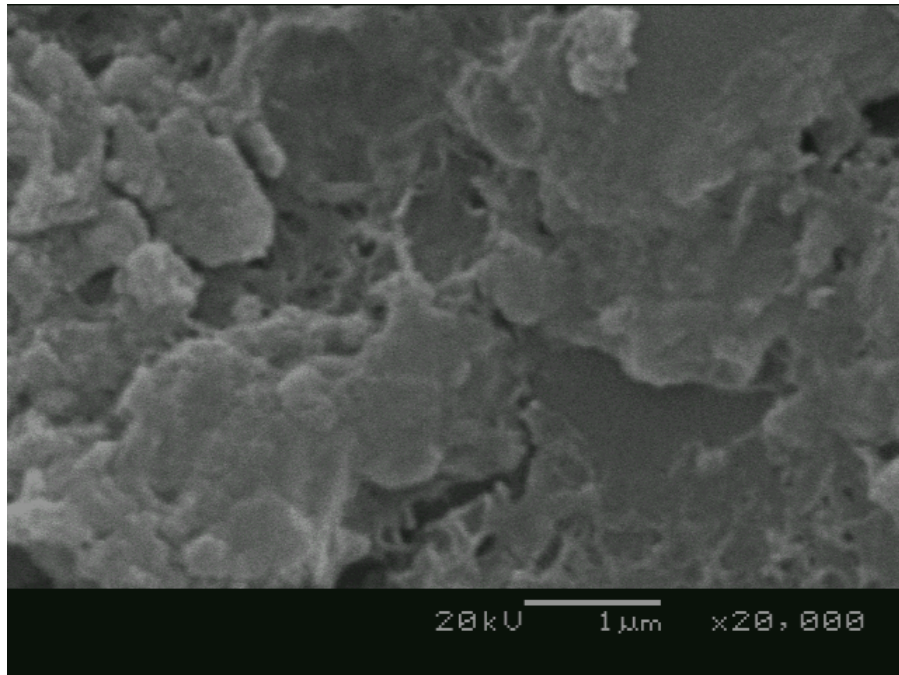
**Arusha pozzolan mixes:**



Arusha pozzolan: 60% Saturation (180 days)

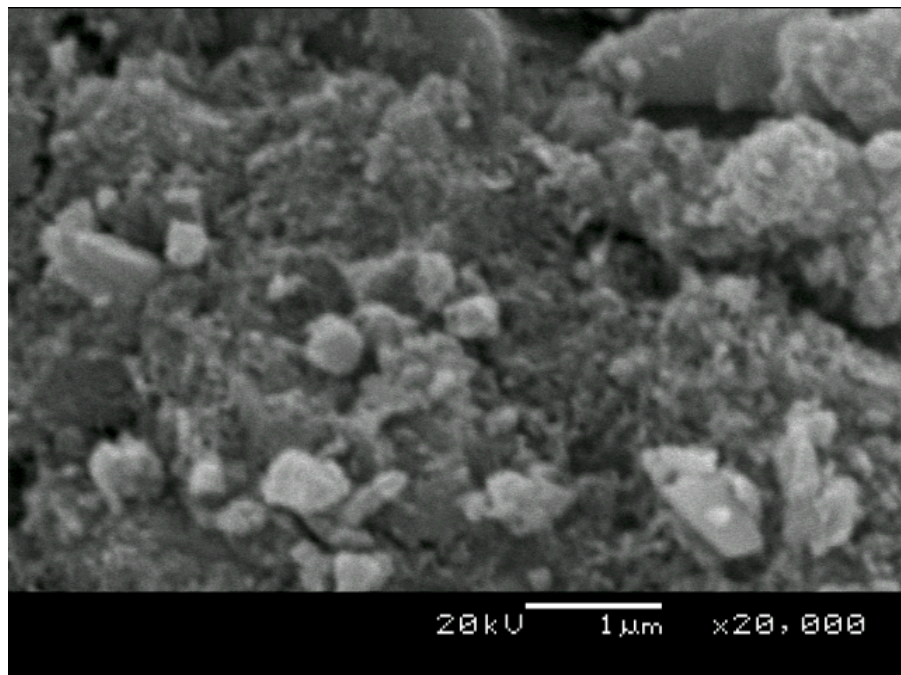


Arusha pozzolan: 80% Saturation (180 days)

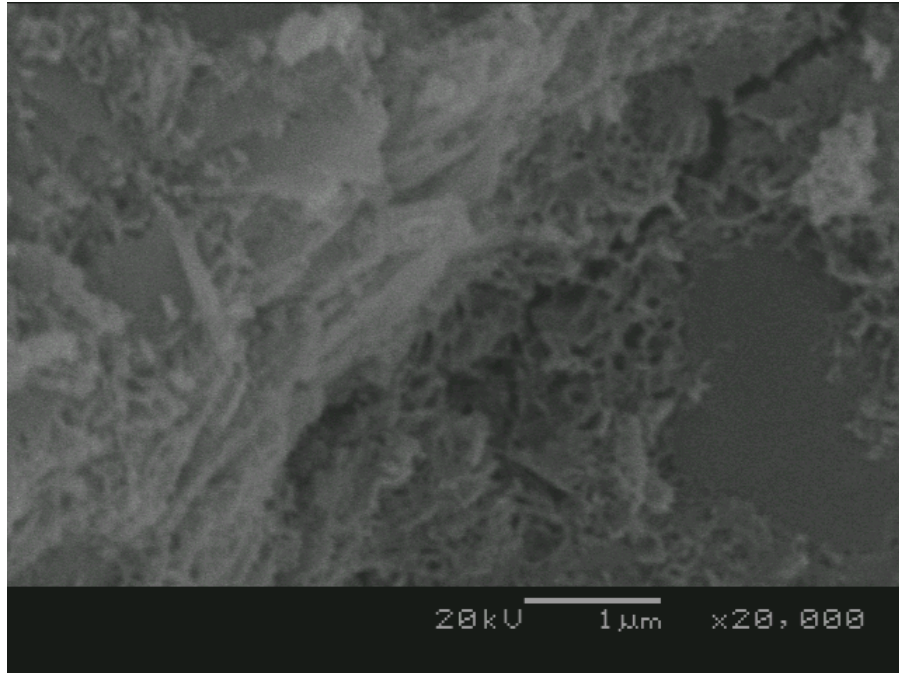


Arusha pozzolan: 100% Saturation (180 days)

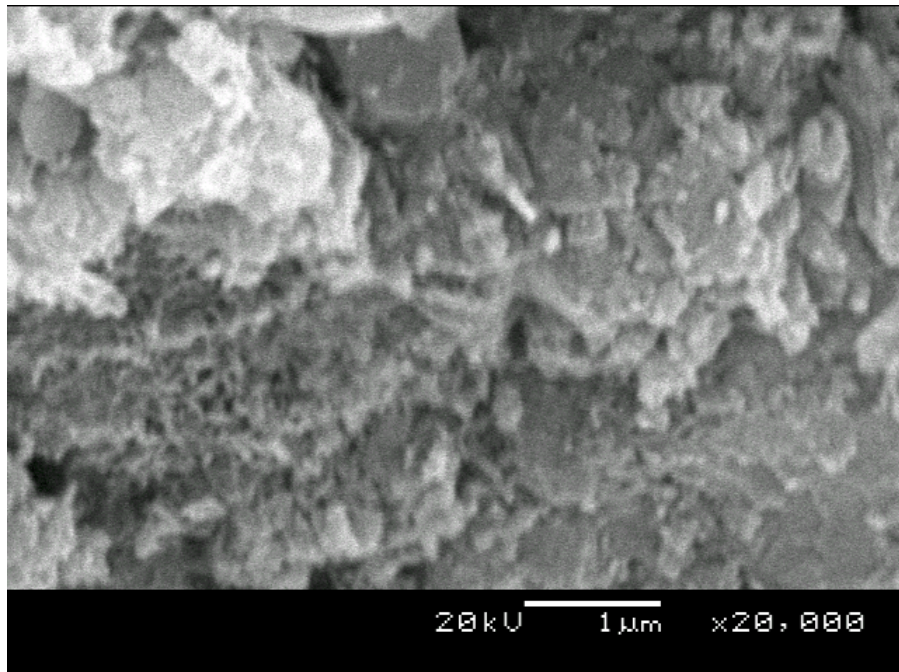
**Mbeya pozzolan mixes:**



Mbeya pozzolan: 60% Saturation (180 days)

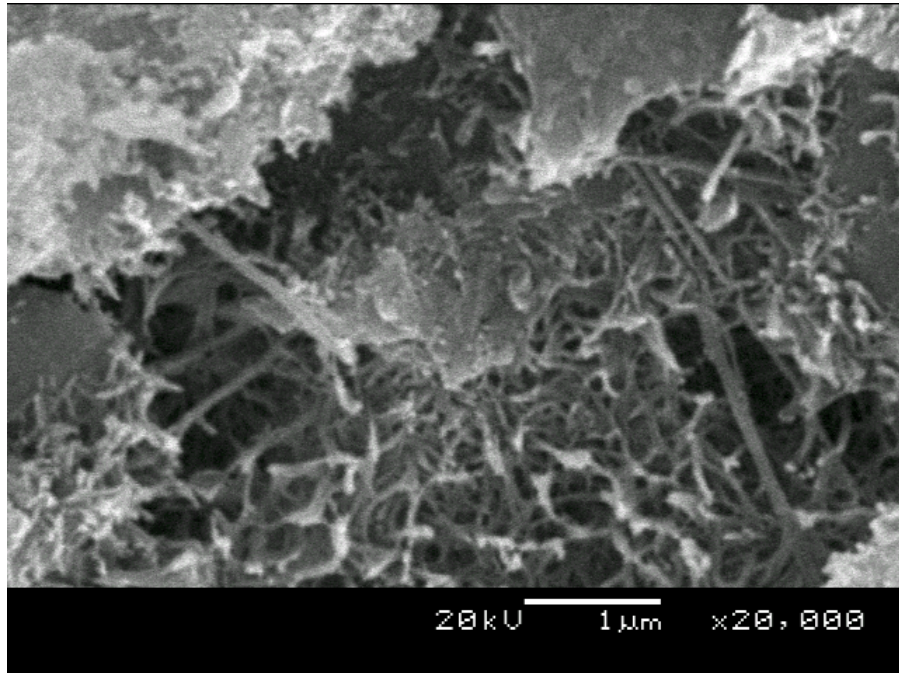


Mbeya pozzolan: 80% Saturation (180 days)

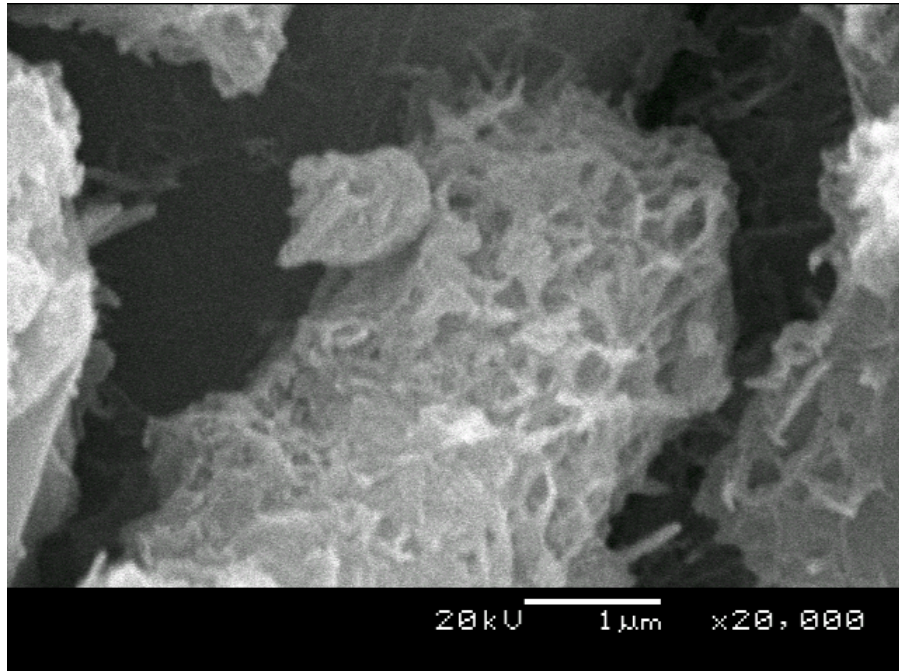


Mbeya pozzolan: 100% Saturation (180 days)

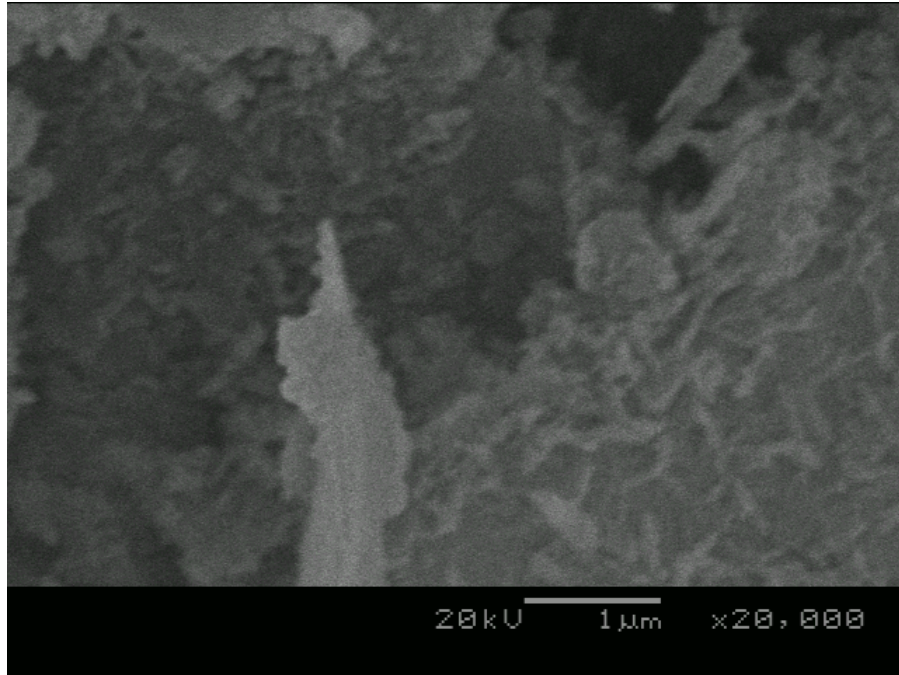
**Cement mixes:**



Cement: 60% Saturation (180 days)



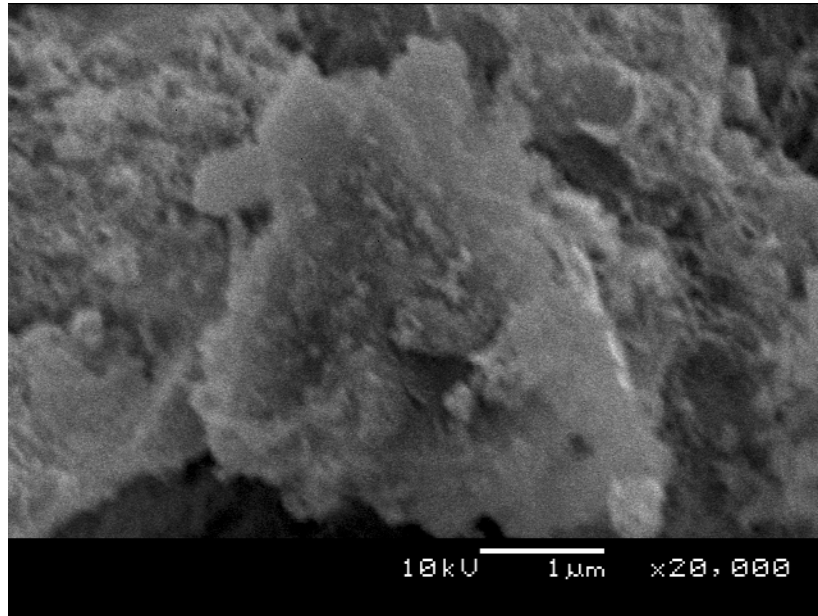
Cement: 80% Saturation (180 days)



Cement: 100% Saturation (180 days)

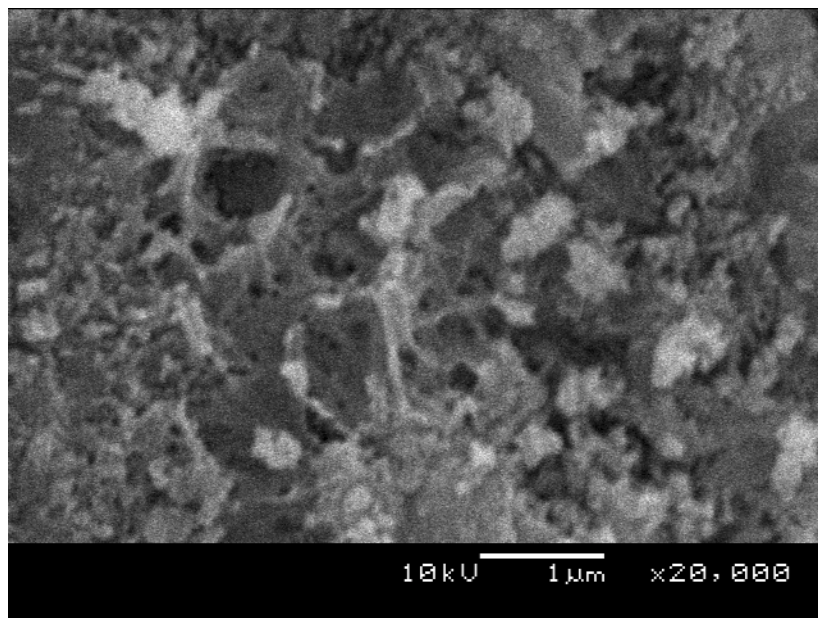
**Appendix B-4: 1 year of curing**

**Arusha pozzolan mixes:**



Arusha pozzolan: 80% Saturation (1 year)

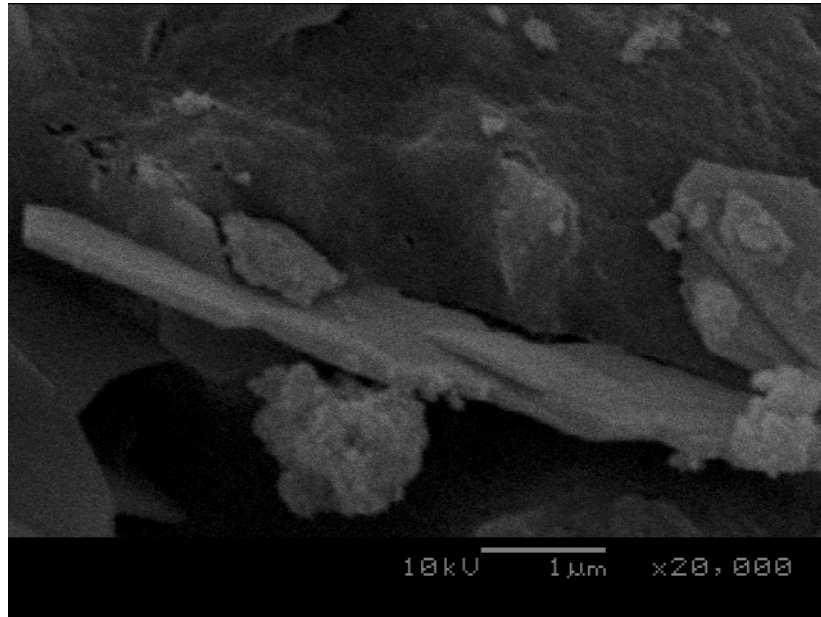
**Mbeya pozzolan mixes:**



Mbeya pozzolan: 80% Saturation (1 year)



**Cement mixes:**



Cement: 80% Saturation (1 year)