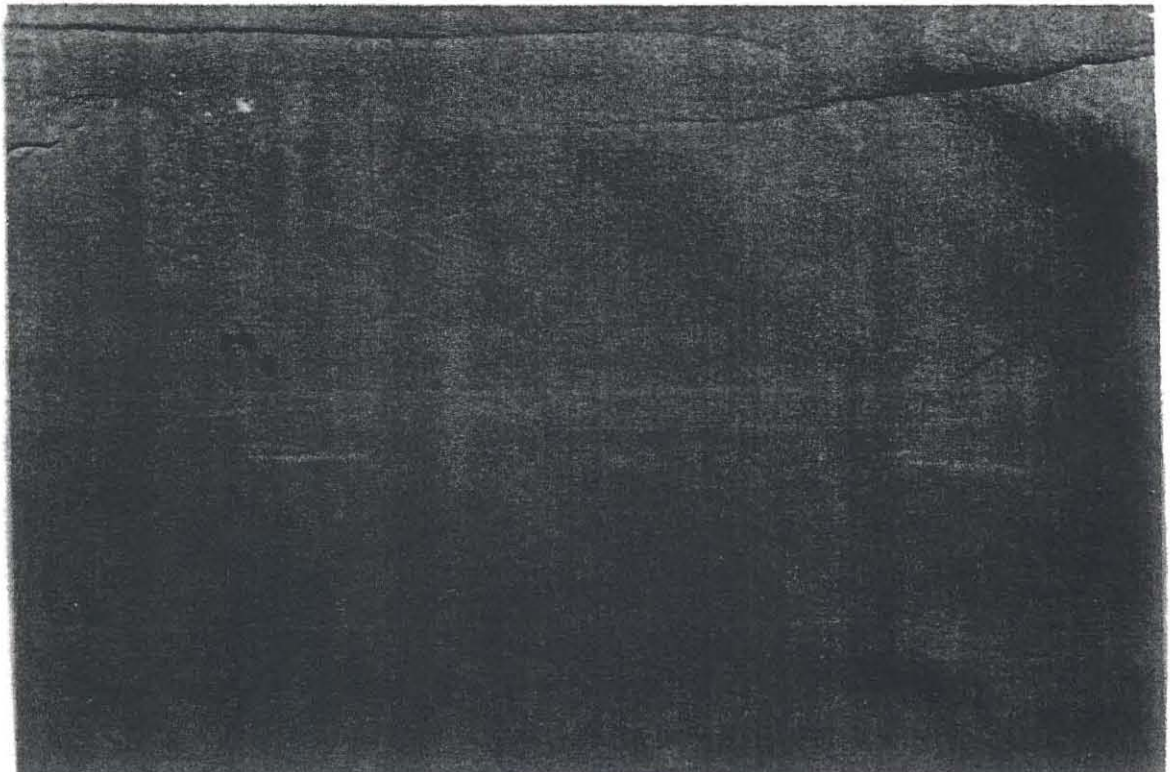
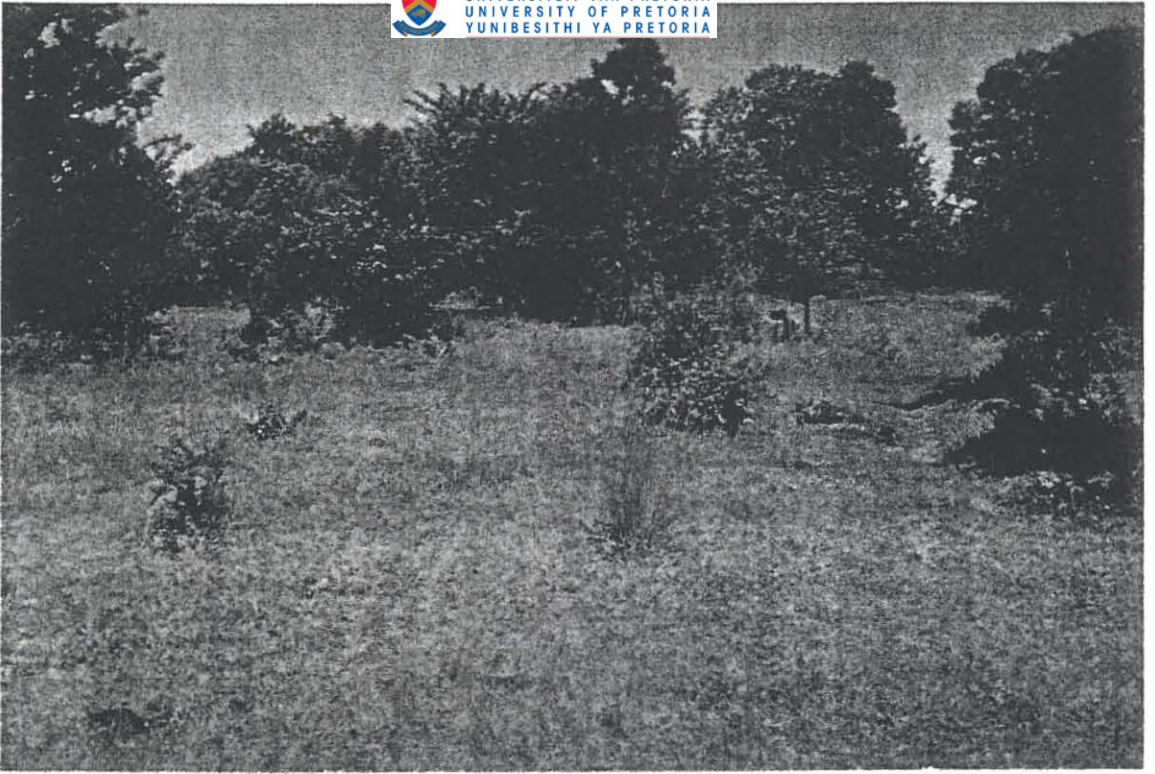


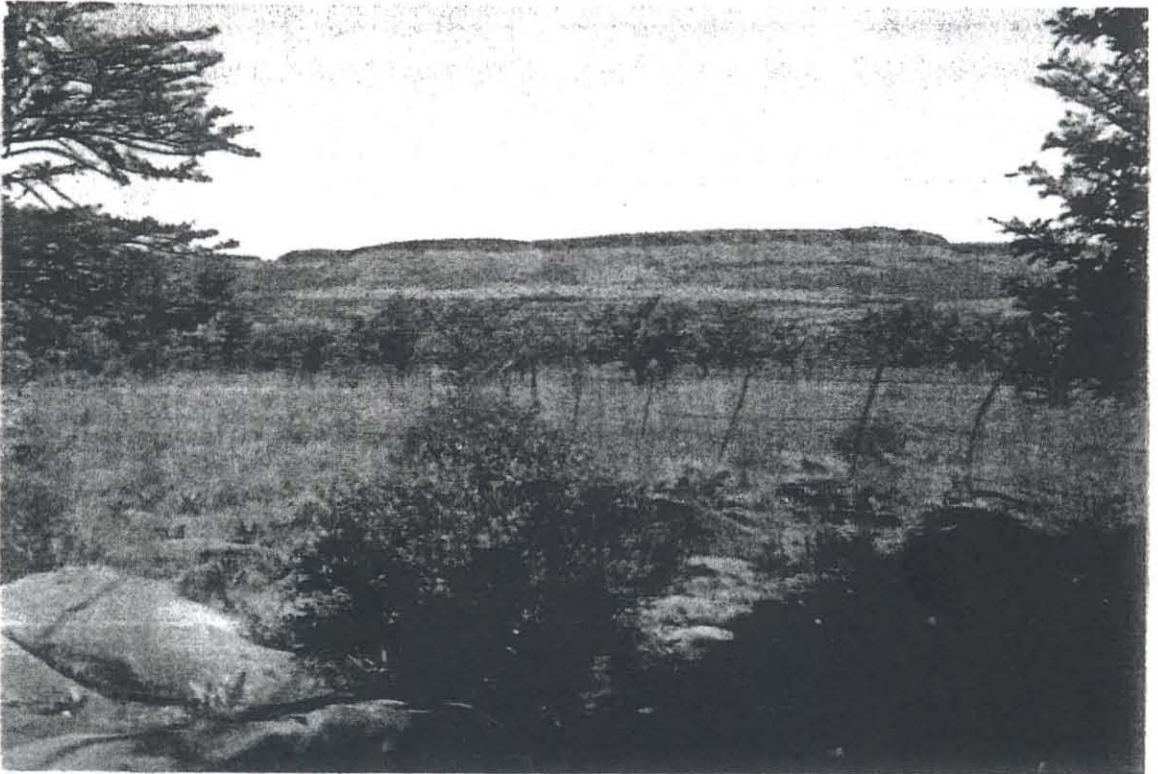
(Photo23: FigureC23- Linear work and house motif)



(Photo24: Figure C25- Zigzag's on parallel lines)



(Photo 25: Inner kraal area of the Matabele village)



(Photo 26: Northern view from the Matabele village)



(Photo 27: Southern entrance to the Matabele village)



(Photo 28: A section of the remaining southern wall)



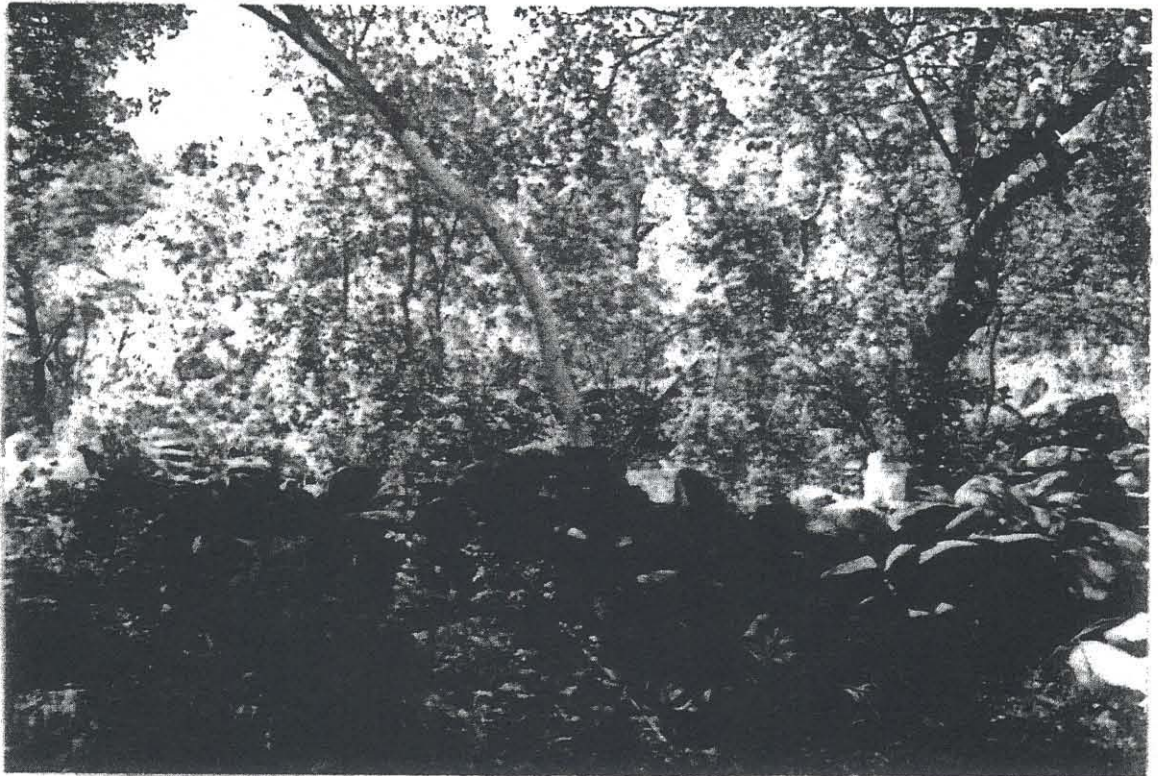
(Photo 29: The eastern entrance to the Matabele village)



(Photo 30: A section of the remaining eastern wall)



(Photo 31: The western entrance to the Matabele village)



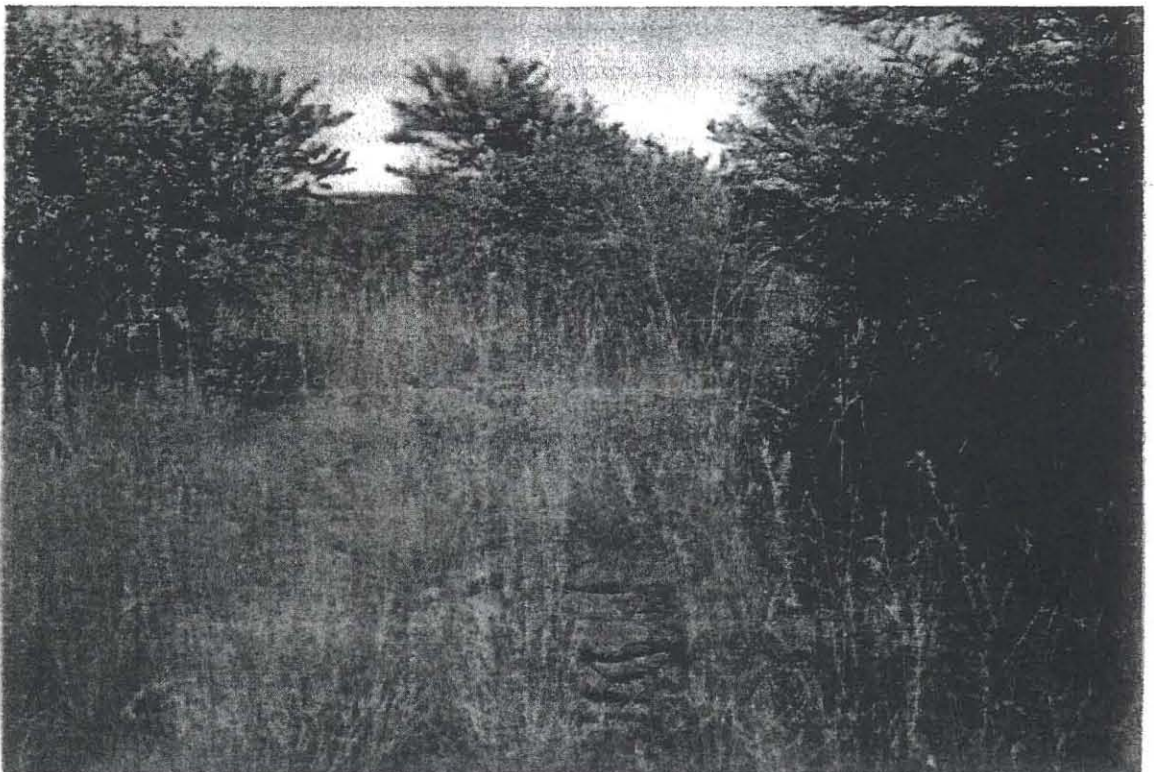
(Photo 32: The remaining stone wall of a small enclosure inside the Matabele village on the western side)



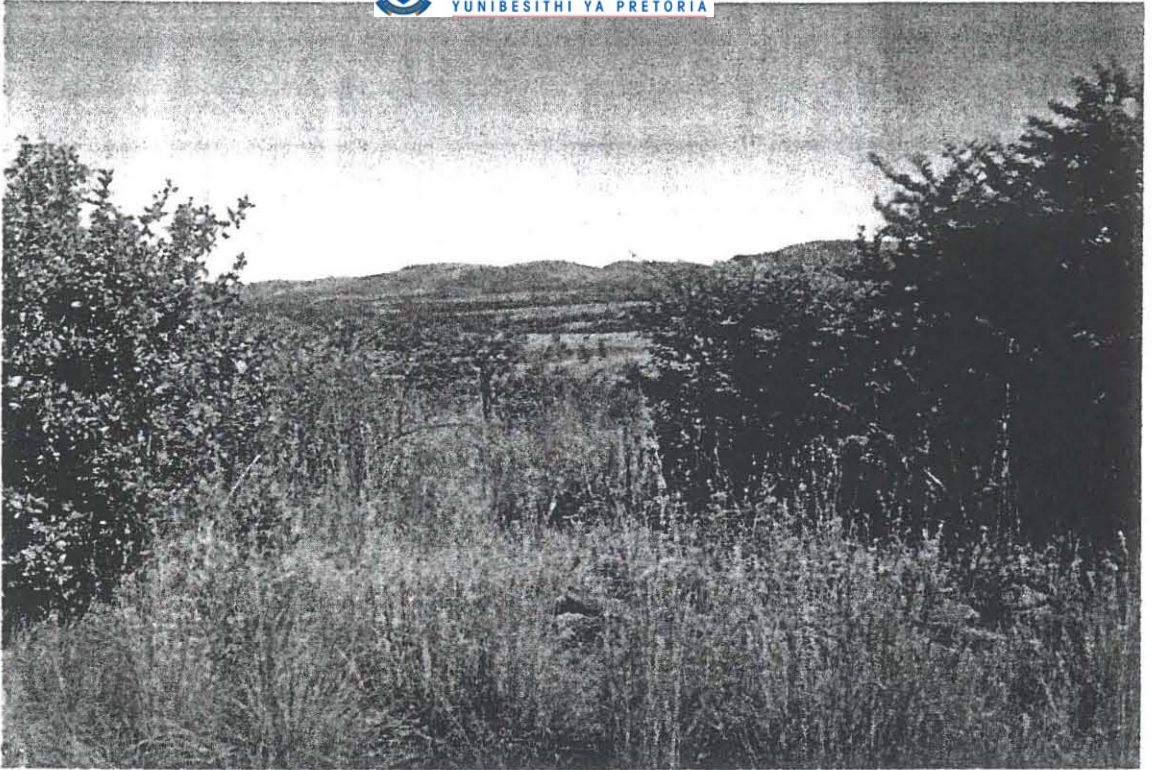
(Photo's 33+34: The remaining walls of a small enclosure inside the Matabele village on the northern side)



(Photo 35: A remaining stone wall of Ebenezer)



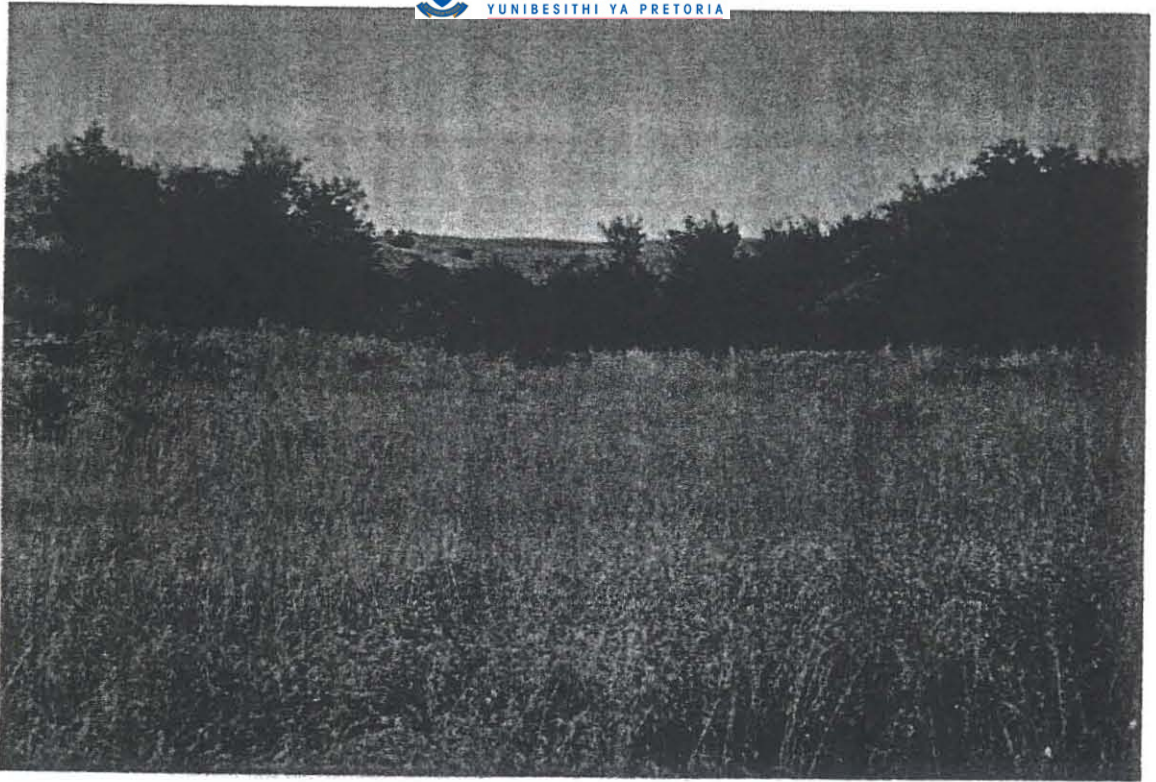
(Photo 36: The southern entrance of Ebenezer)



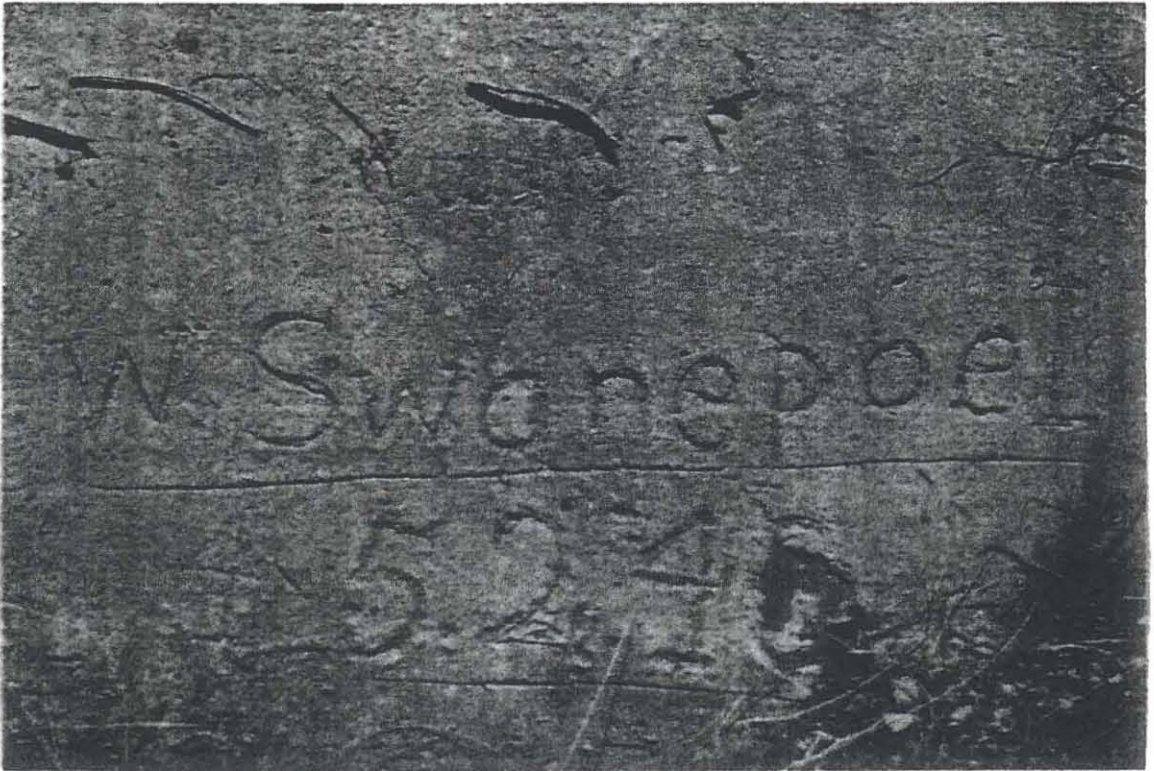
(Photo 37: The northern view from Ebenezer)



(Photo 38: Figure E1, Female Figurine)



(Photo 39: A view of the Dam wall today)



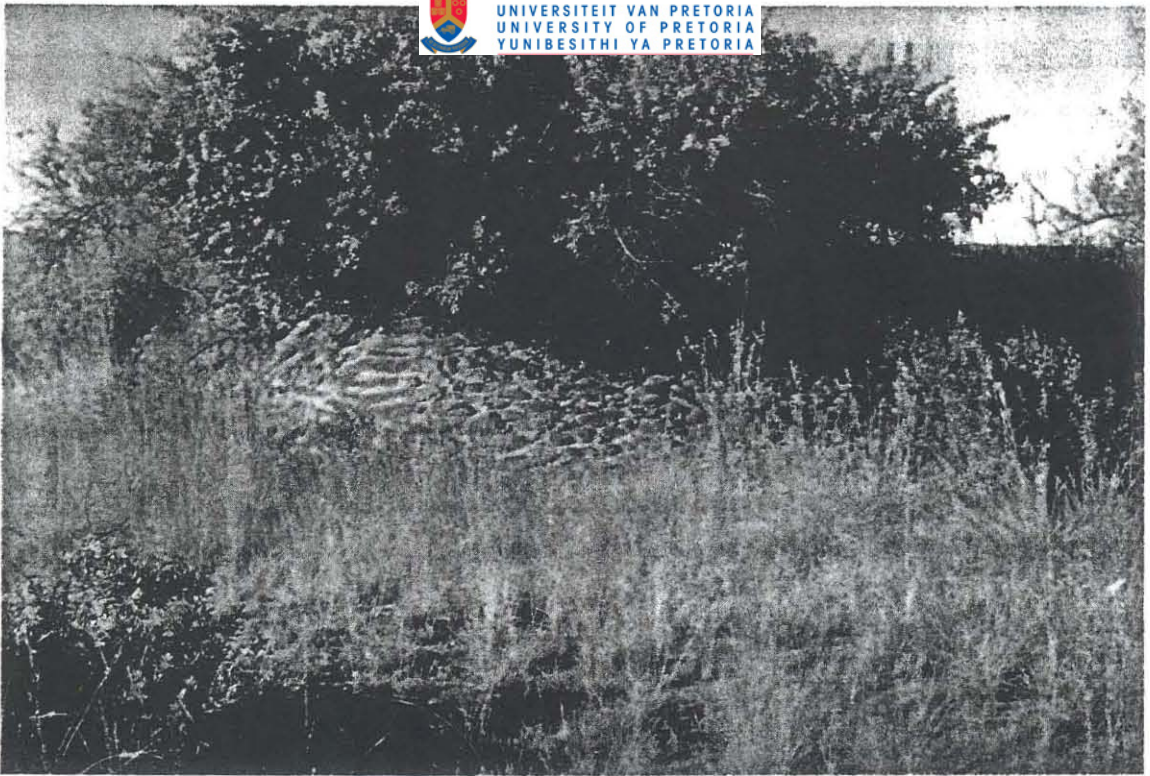
(Photo 40: The date of completion and the engineers name)



(Photo 41: The name of one of the builders)



(Photo 42: The well packed hornfel wall)



(Photo 43: The start of the cement usage in the Dam wall)



(Photo 44: The end of the overflow wall, depicting the hornfel and cement usage in it's construction)