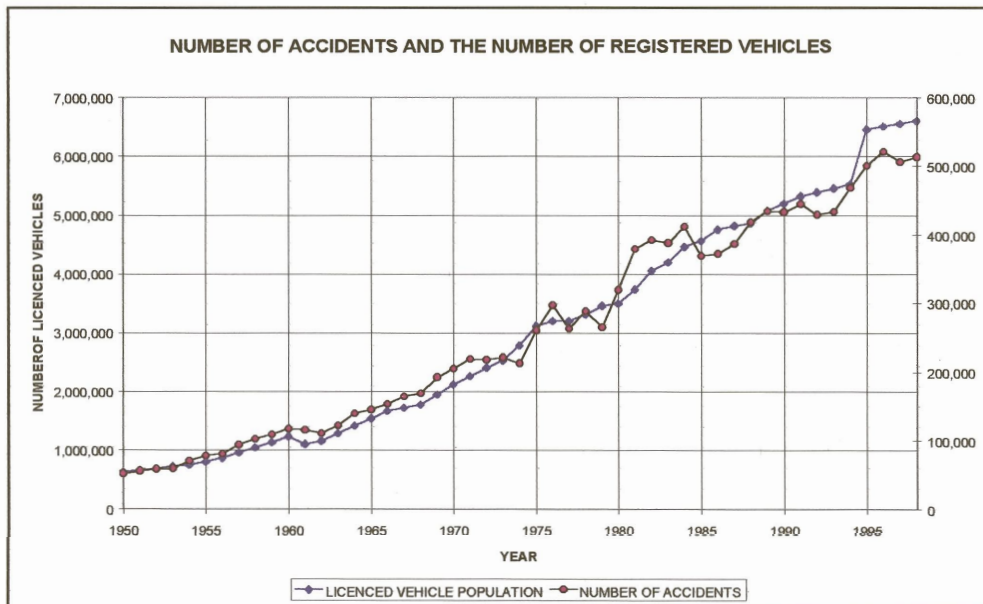
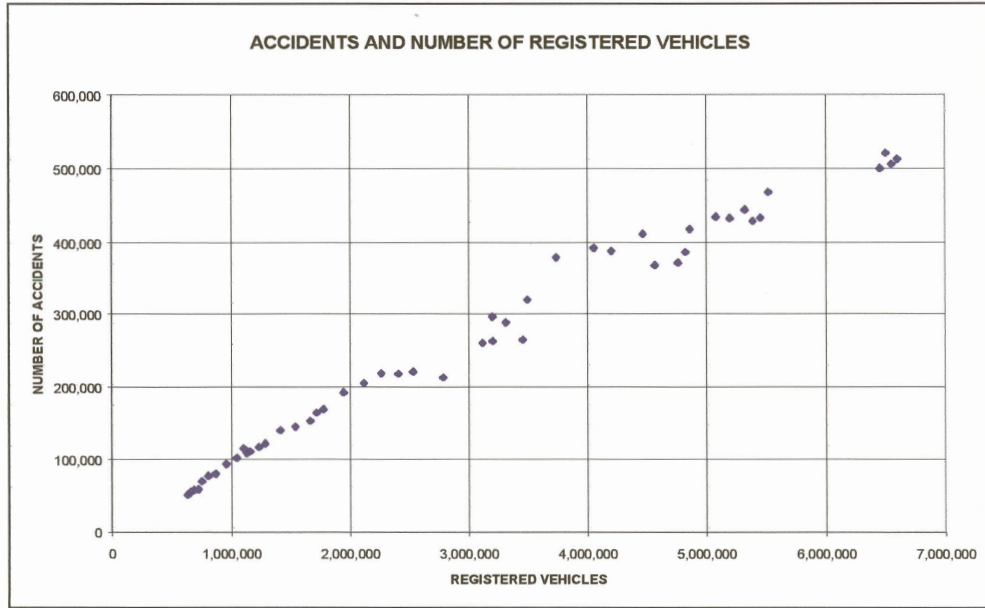


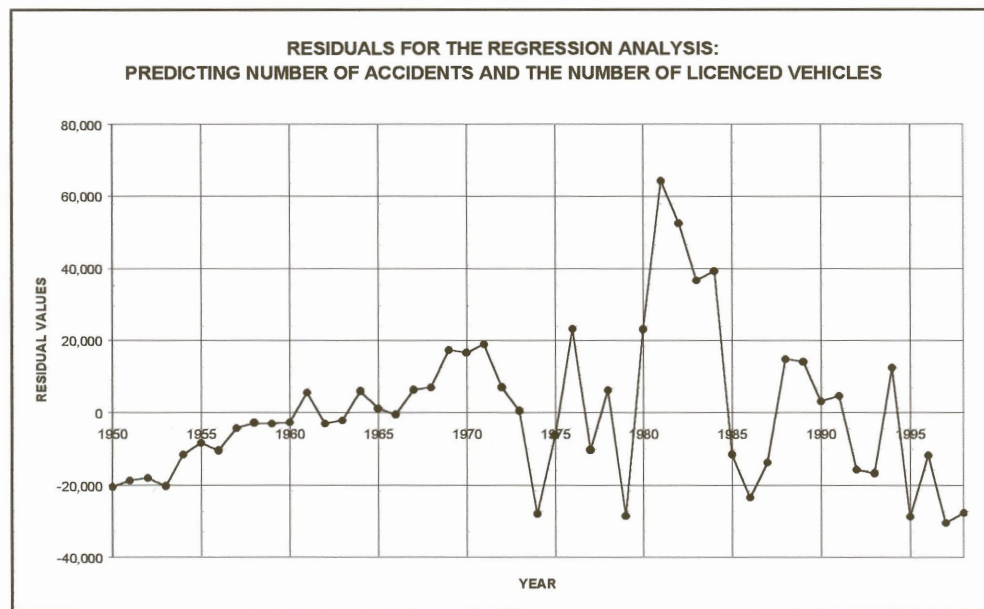
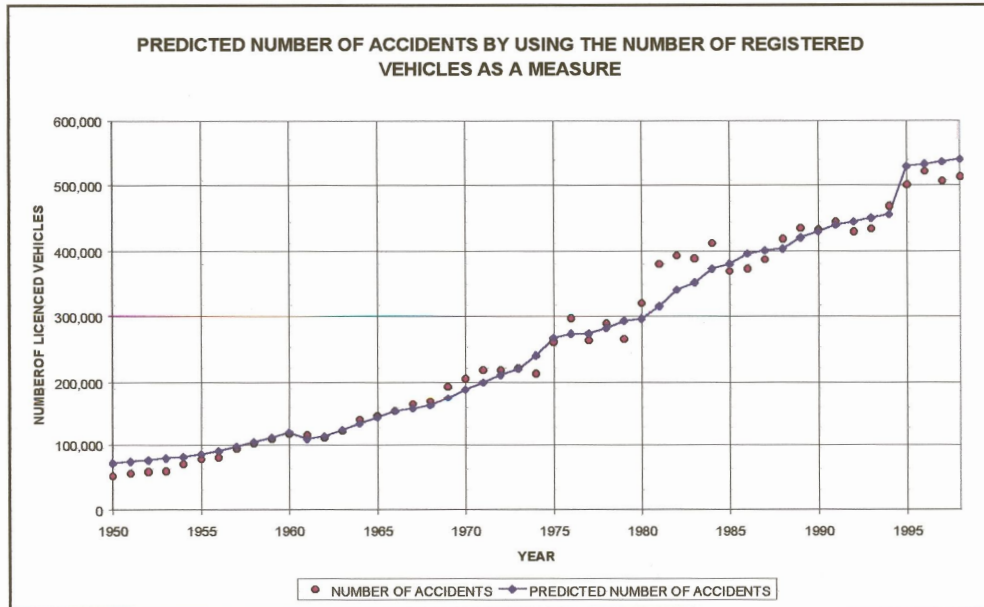
Appendix A:

The regression analysis of
number of accidents and fuel
sales.



APPENDIX A: THE REGRESSION ANALYSIS FOR NUMBER OF ACCIDENTS AND NUMBER OF REGISTERED VEHICLES





SUMMARY OUTPUT

Regression Statistics

Multiple R	0.99
R Square	0.98
Adjusted R	0.98
Standard Error	20739.06
Observations	49.00



RESIDUAL OUTPUT

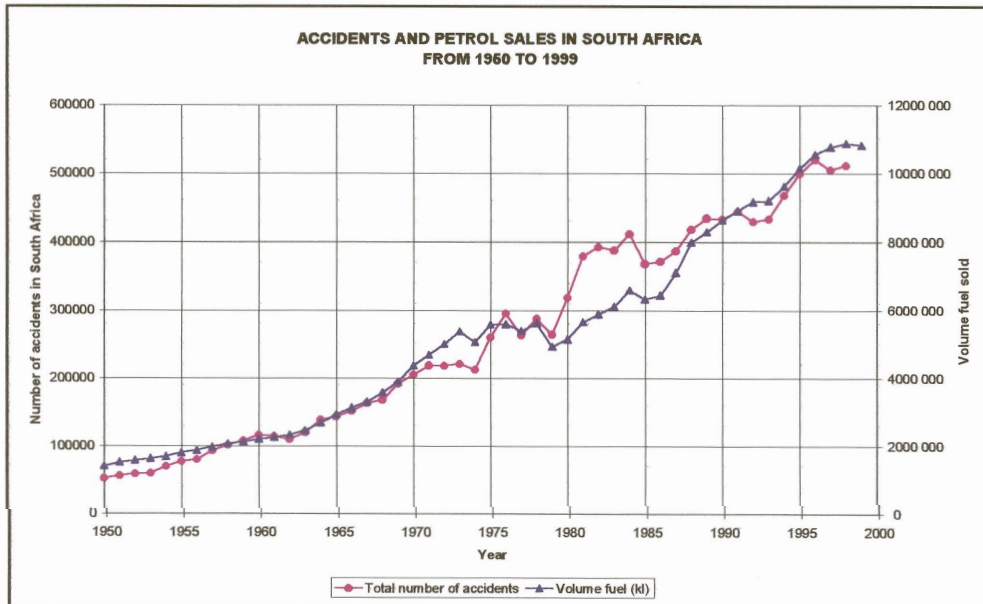
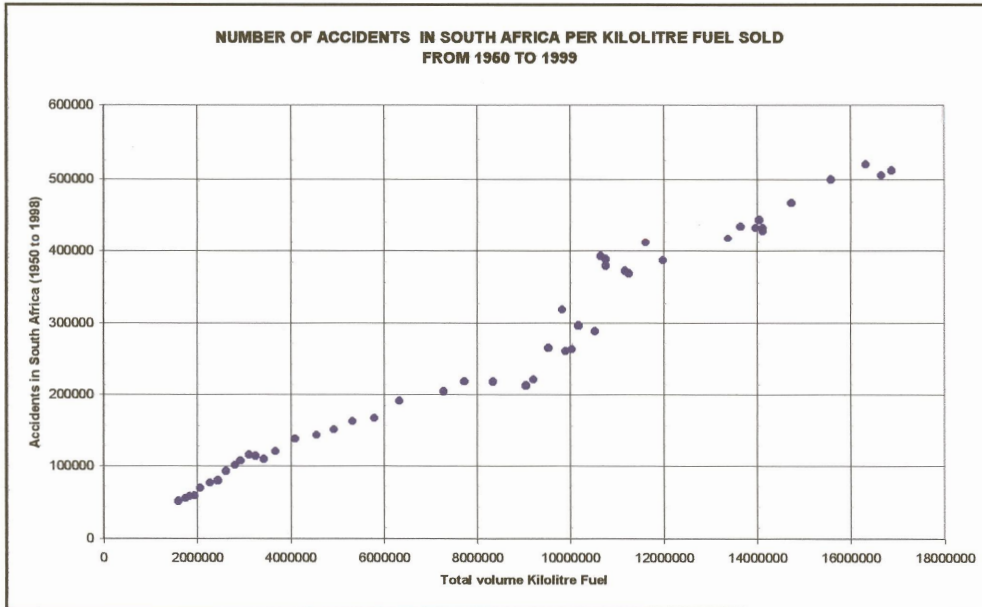
<i>Observation</i>	<i>Predicted Y</i>	<i>Residuals</i>
1.00	72390.99	-20424.99
2.00	74391.70	-18758.70
3.00	76503.11	-18060.11
4.00	79529.74	-20209.74
5.00	81756.94	-11575.94
6.00	85961.96	-8482.96
7.00	90732.77	-10469.77
8.00	97890.09	-4390.09
9.00	104763.70	-2868.70
10.00	111411.28	-3090.28
11.00	119451.43	-2763.43
12.00	109281.76	5507.24
13.00	113559.22	-3077.22
14.00	123488.72	-2192.72
15.00	133418.23	5982.77
16.00	143347.73	1149.27
17.00	153277.24	-594.24
18.00	157544.86	6330.14
19.00	161812.48	6903.52
20.00	175309.51	17205.49
21.00	188806.55	16460.45
22.00	200103.35	18822.65
23.00	211400.15	7035.85
24.00	221061.81	466.19
25.00	240952.65	-27849.65
26.00	267021.94	-6259.94
27.00	273514.60	23050.40
28.00	273680.18	-10315.18
29.00	282420.98	6217.02
30.00	293572.82	-28473.82
31.00	296487.49	23019.51
32.00	315652.53	64199.47
33.00	340477.41	52493.59
34.00	352086.94	36512.06
35.00	372946.70	39150.30
36.00	380747.19	-11562.19
37.00	395933.70	-23265.70
38.00	400950.68	-13802.68
39.00	403754.42	14728.58
40.00	420887.39	14047.61
41.00	430187.40	3099.60
42.00	439955.44	4585.56
43.00	445172.18	-15687.18
44.00	450388.93	-16677.93
45.00	455605.67	12391.33
46.00	528839.98	-28606.98
47.00	532630.90	-11856.90
48.00	536421.83	-30433.83
49.00	540212.75	-27607.75

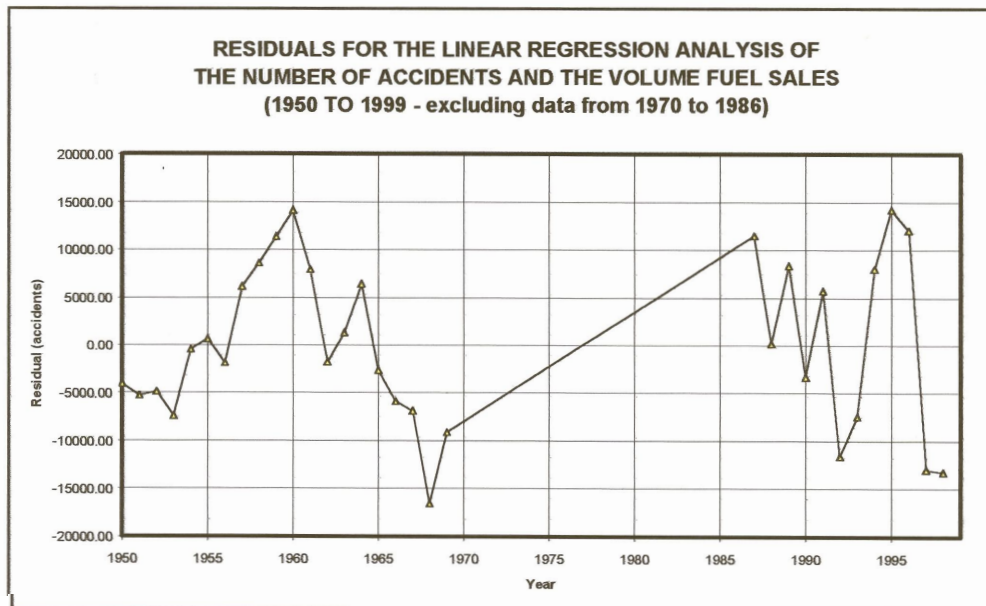
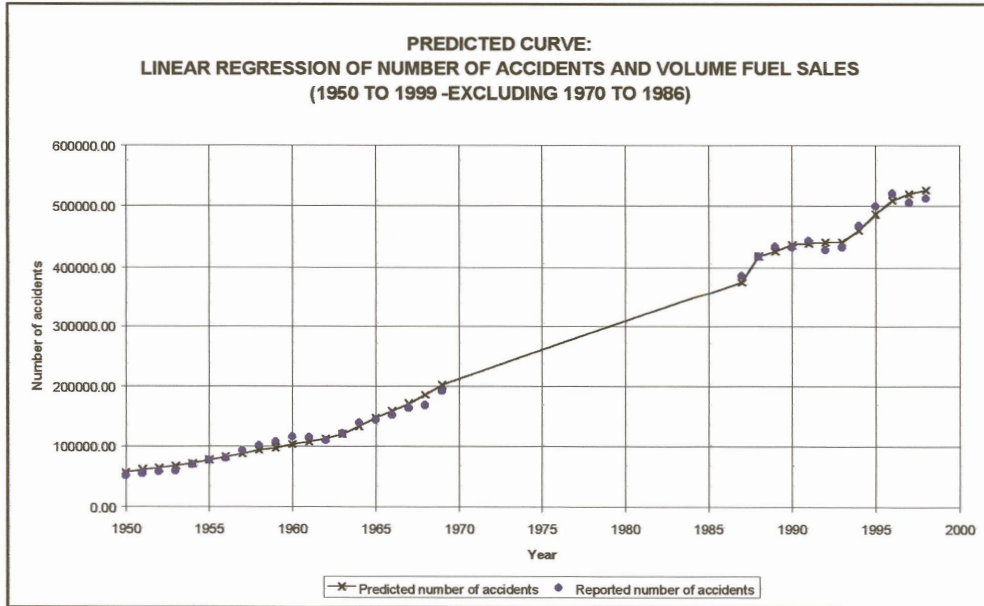
Appendix B:

The regression analysis of
number of accidents and number
of registered vehicles.



APPENDIX B: THE REGRESSION ANALYSIS FOR NUMBER OF ACCIDENTS AND FUEL (PETROL AND DIESEL) SALES







Output of the regression analysis of the number of accidents and the volume fuel sales from 1950 to 1999 with the exclusion of datapoints between 1970 and 1986.

Multiple R	1.00
R Square	0.99759397
Adjusted R Square	1.00
Standard Error	8788.61
Observations	32.00

RESIDUAL OUTPUT

<i>Observation</i>	<i>Predicted Y</i>	<i>Residuals</i>	<i>Standard</i>
1.00	56067.52	-4101.52	-0.47
2.00	60954.75	-5321.75	-0.62
3.00	63352.25	-4909.25	-0.57
4.00	66733.36	-7413.36	-0.86
5.00	70698.47	-517.47	-0.06
6.00	76876.66	602.34	0.07
7.00	82194.21	-1931.21	-0.22
8.00	87358.08	6141.92	0.71
9.00	93321.11	8573.89	0.99
10.00	96978.85	11342.15	1.31
11.00	102603.77	14084.23	1.63
12.00	106876.25	7912.75	0.92
13.00	112347.49	-1865.49	-0.22
14.00	120031.81	1264.19	0.15
15.00	133002.95	6398.05	0.74
16.00	147172.84	-2675.84	-0.31
17.00	158607.11	-5924.11	-0.69
18.00	170779.08	-6904.08	-0.80
19.00	185317.81	-16601.81	-1.92
20.00	201639.31	-9124.31	-1.06
21.00	375704.57	11443.43	1.32
22.00	418337.19	145.81	0.02
23.00	426574.79	8360.21	0.97
24.00	436625.88	-3338.88	-0.39
25.00	438808.23	5732.77	0.66
26.00	441144.26	-11659.26	-1.35
27.00	441175.00	-7464.00	-0.86
28.00	460016.95	7980.05	0.92
29.00	486051.44	14181.56	1.64
30.00	508797.03	11976.97	1.39
31.00	519063.28	-13075.28	-1.51
32.00	525917.70	-13312.70	-1.54