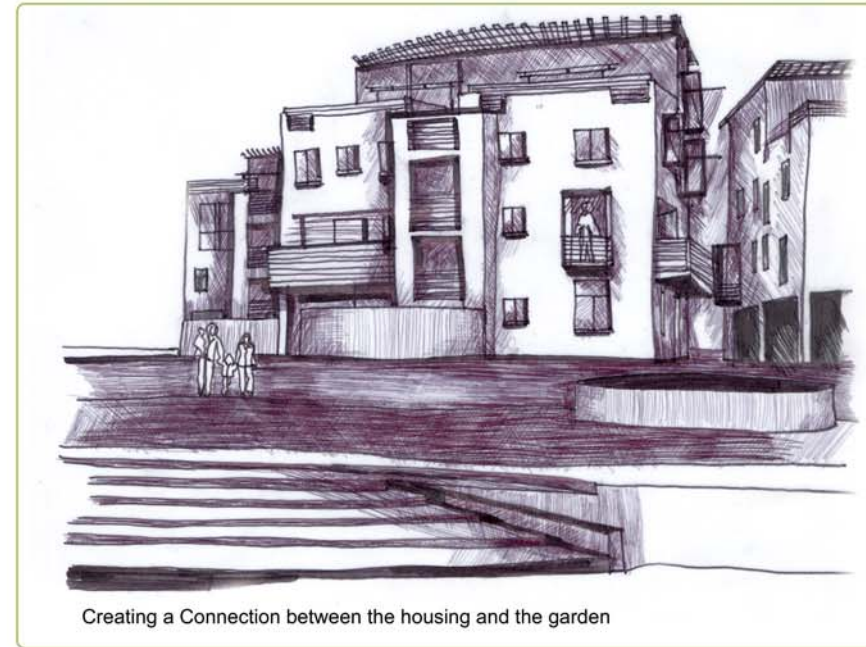
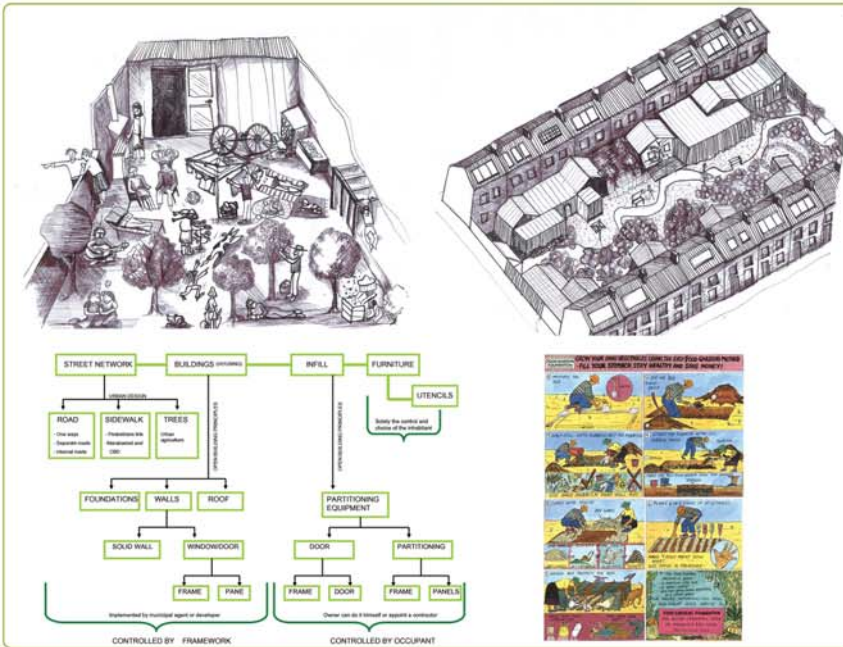


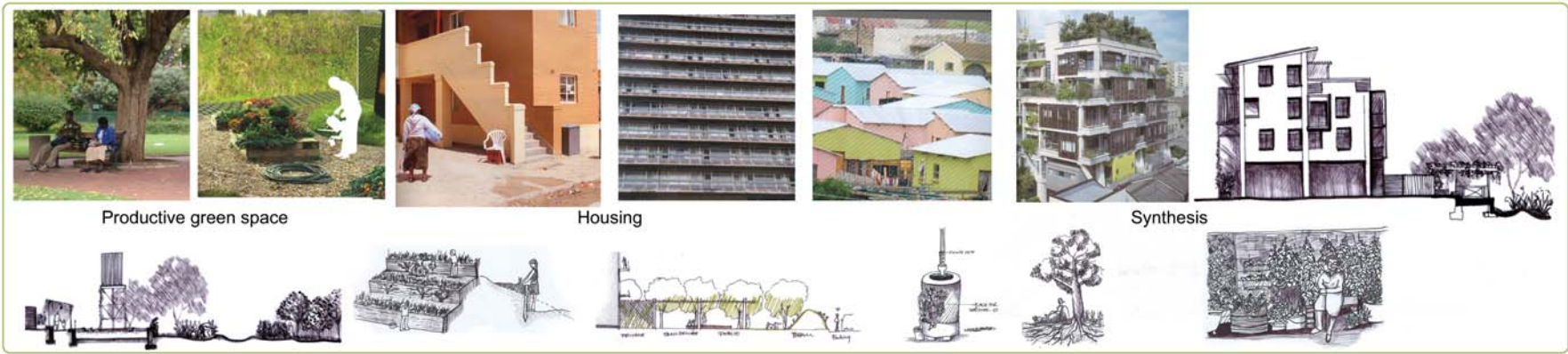


HOUSING: A GREEN PROPRIETOR IN MARABASTAD
JOZANNE SPIES MARCH (PROF) UNIVERSITY OF PRETORIA



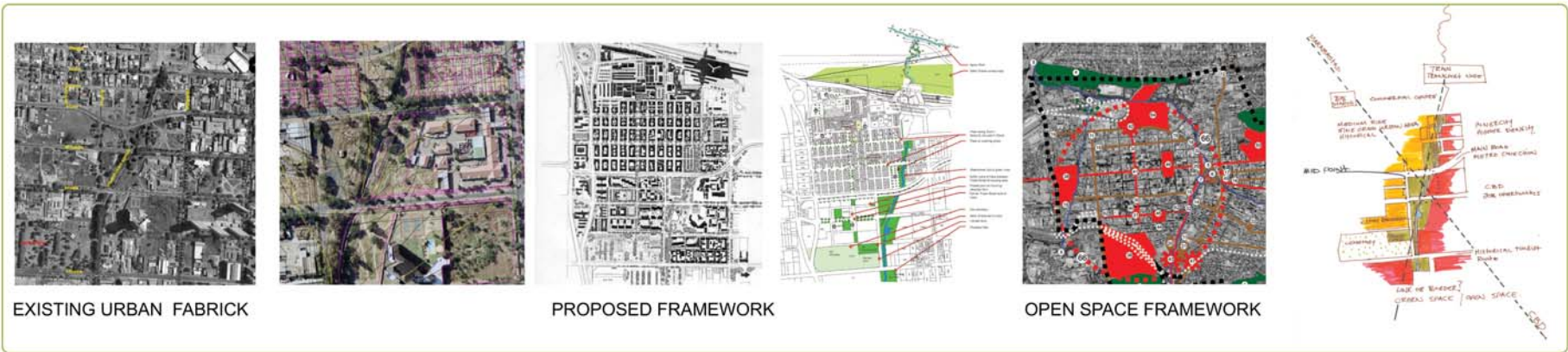
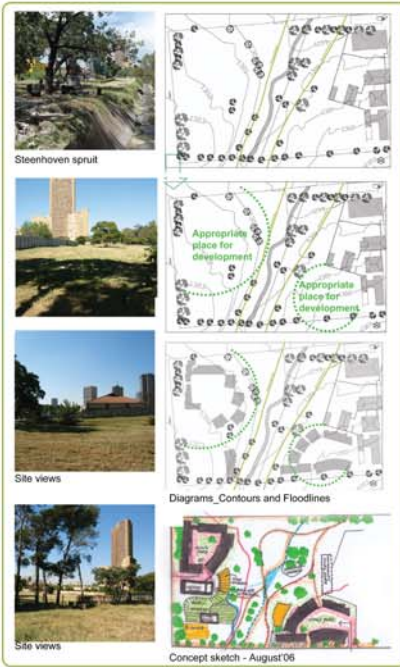


In what way can a housing model contribute to Public Space and Urban Life ?



HOUSING: A GREEN PROPRIETOR IN MARABASTAD

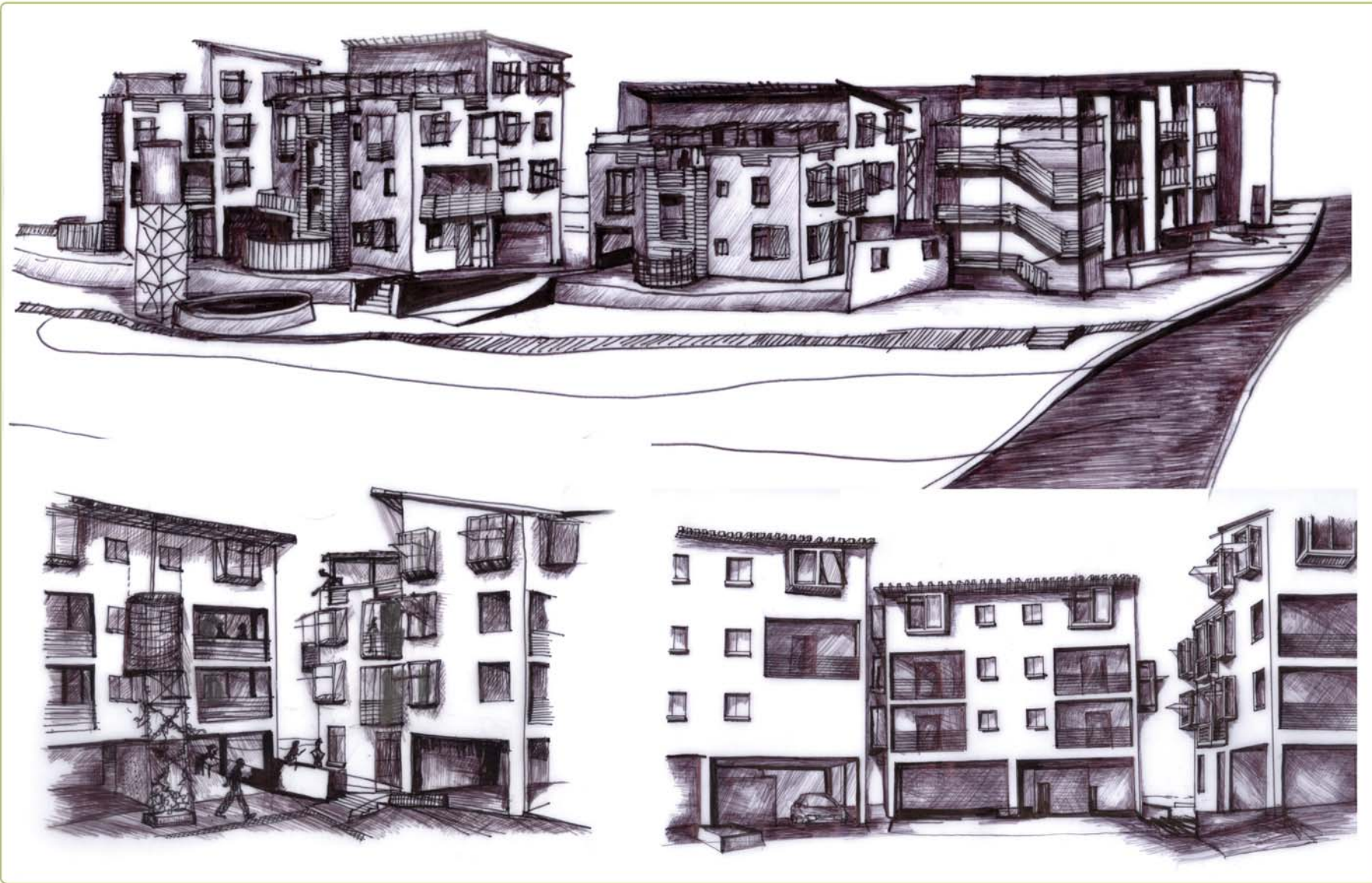
An investigation into the connection between housing and open greenspace in the urban environment.



From the frameworks the relevance of working around Marabastad became clear. At the start of 2006 The Social Housing Focus Trust - SHIFT -Foundation announced that they will be using a site in Marabastad for their annual student housing competition. This gave confirmation for the decision to choose a site in the area.

After a visit to the Marabastad area the potential around the Steenhoven spruit was noticed. The spruit is badly neglected and it is obvious that an intervention is needed before it will be able to function as a quality open space system. If the housing density is to be increased, an open green are of quality around the spruit would be of vital importance. It became clear that rejuvenation of the green space would have to form part of the regionalization of the area.

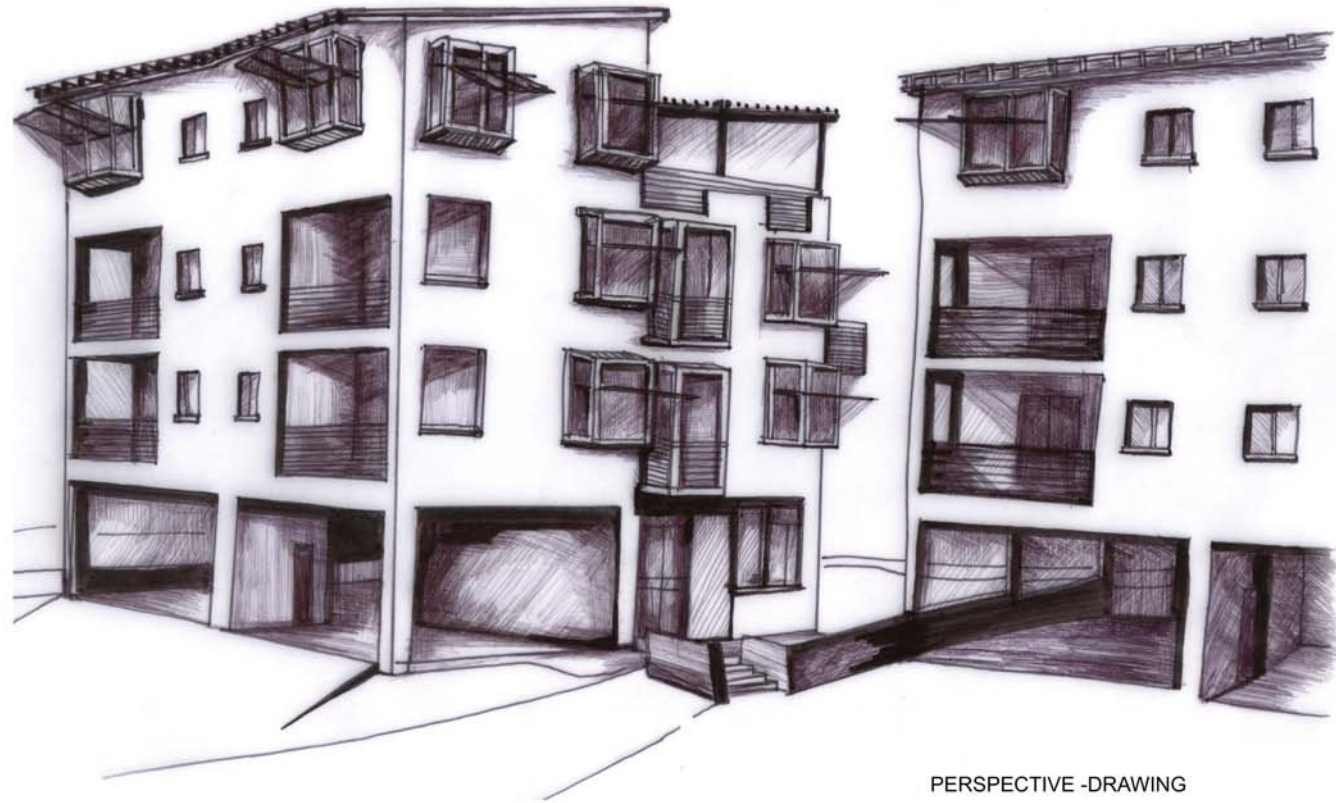




Jozanne Spies 58023556 March/prof 2006

The form of the building creates a connection to the landscape and generates inner courtyard space for communal activities. Breaking away from a square courtyard pulls the development closer to the park and the openings create the physical connection. The curved form lets the building seem like a single complete and integrated entity. If the four blocks were to be aligned in a straight line, the pathways between the blocks would be much more evident, breaking the building into 4 obviously separate units.

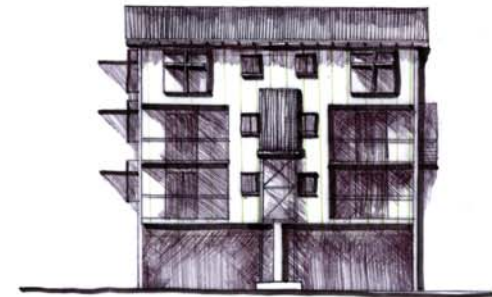
HOUSING: A GREEN PROPRIETOR IN MARABASTAD
JOZANNE SPIES MARCH(PROF) UNIVERSITY OF PRETORIA



PERSPECTIVE -DRAWING



East Elevation



West Elevation

Jozanne Spies 1902281996 MArch(prof) 2006



Presentation

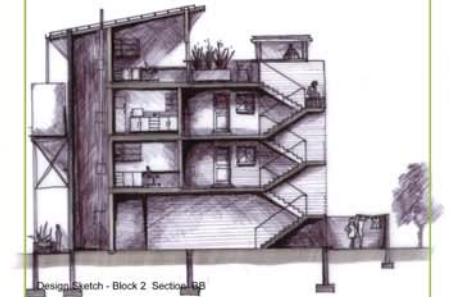
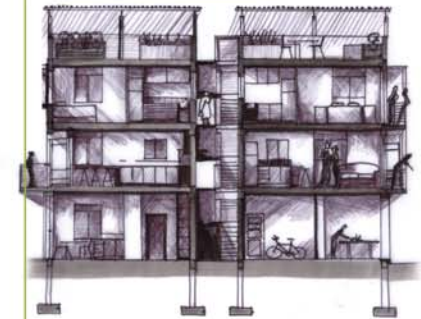
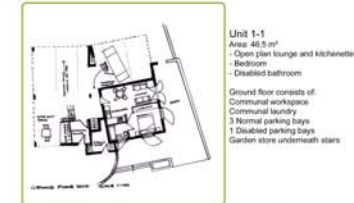
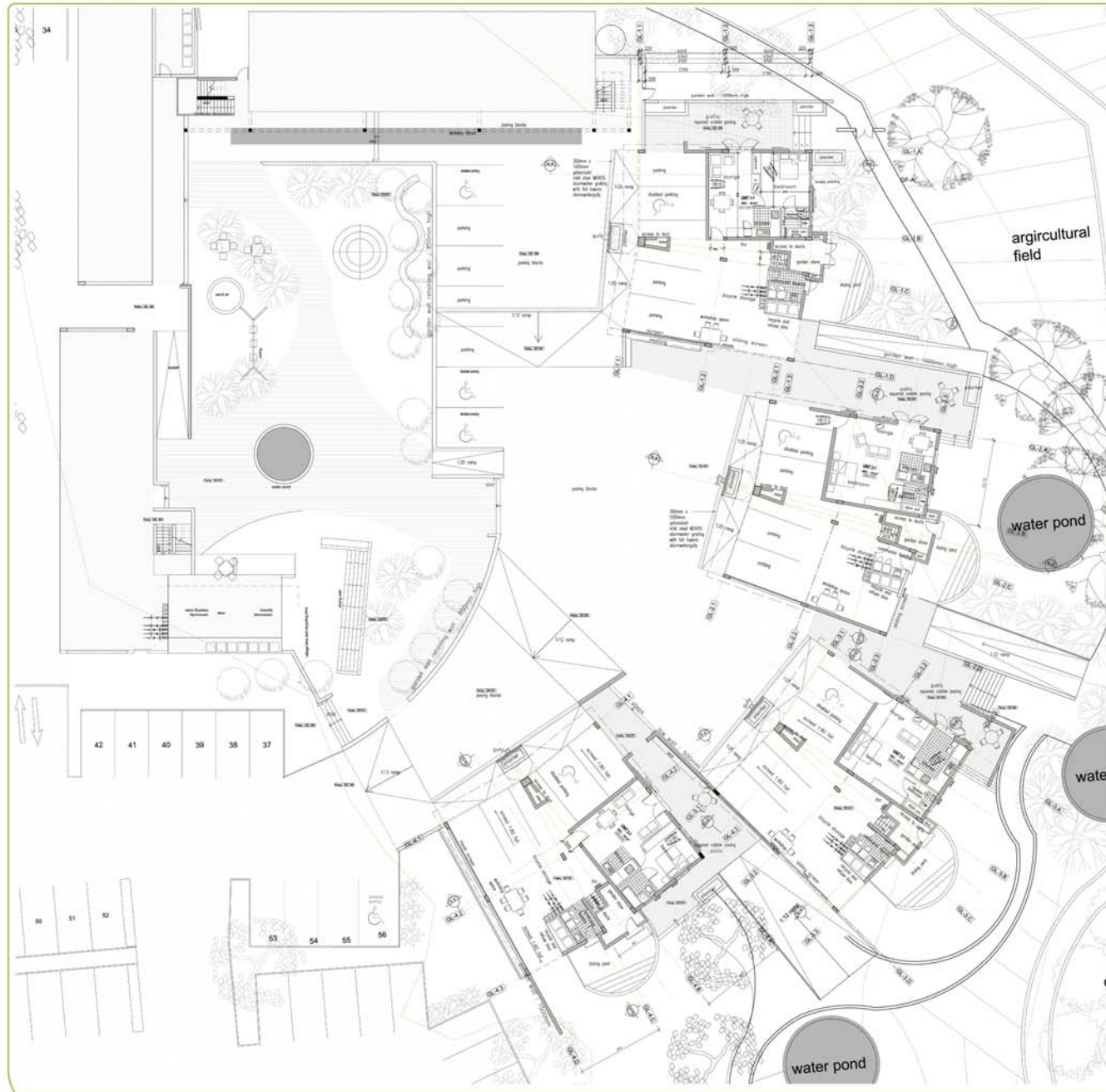


PERSPECTIVE -DRAWING

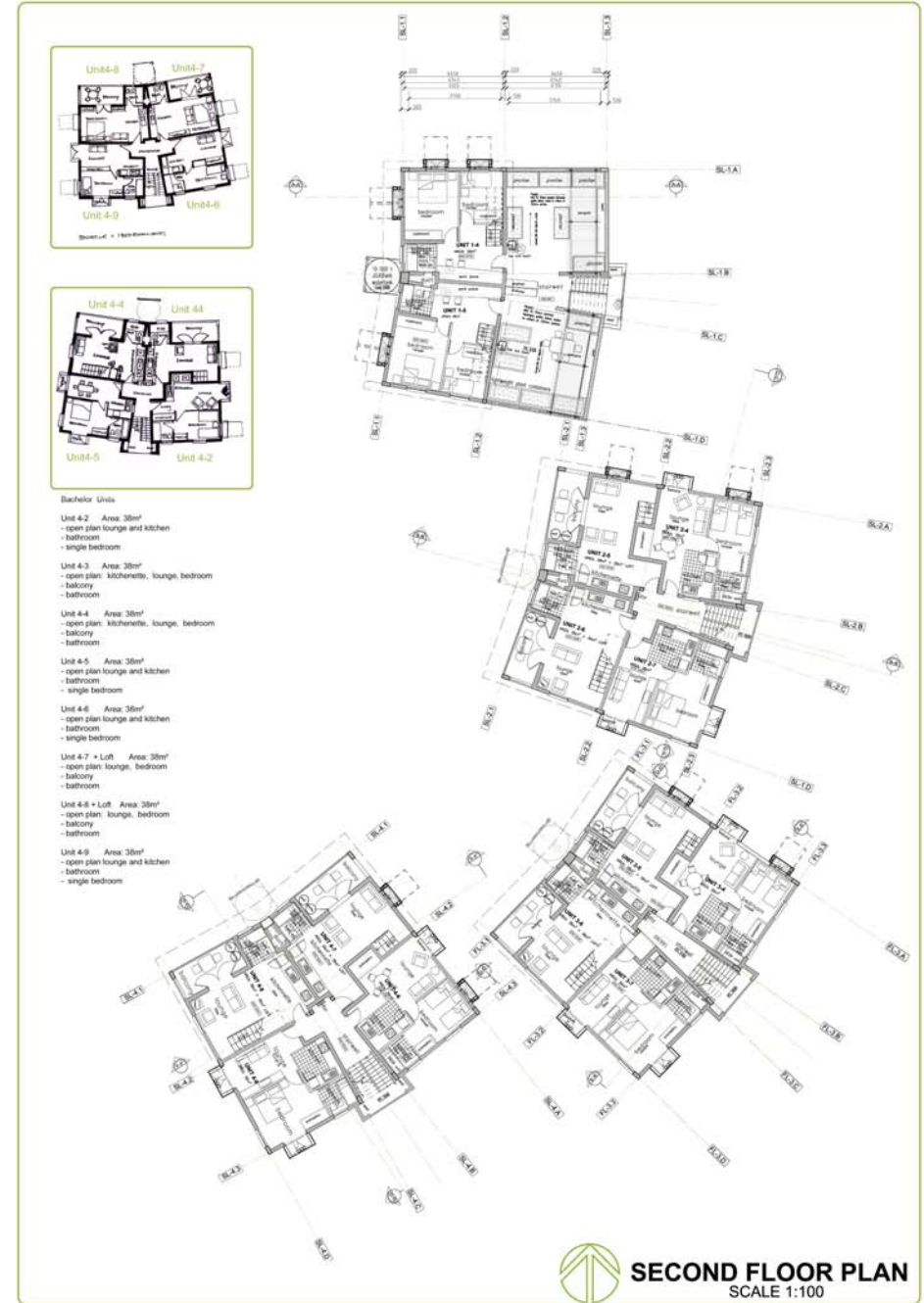
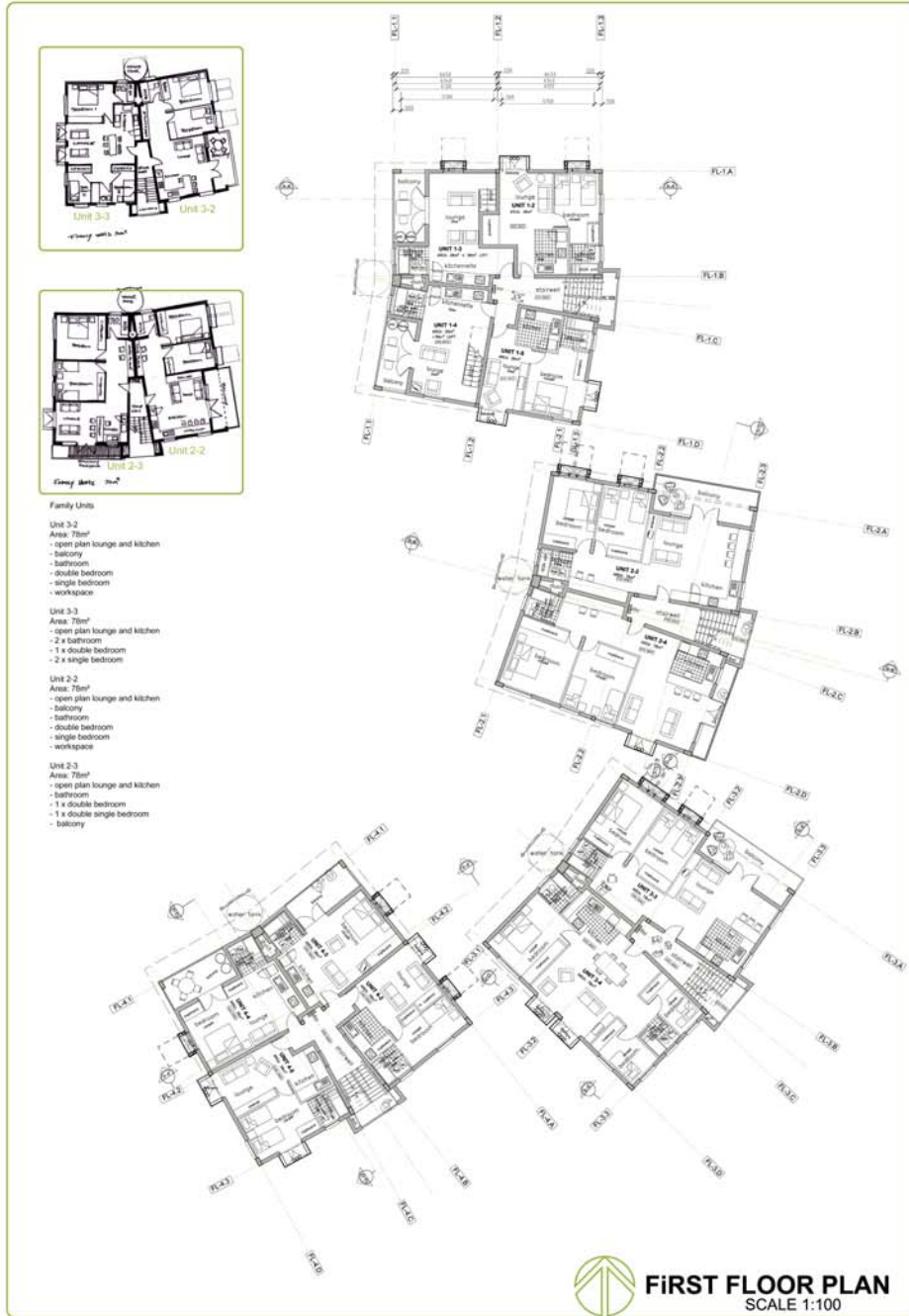
CLIMATE CONTROL

The orientation of the building is a challenge. In order to keep a direct connection with the park the building faces predominantly East-West. Each block is slightly turned and the facades seldom face directly West, East, South or North respectively. The western façade remains problematic because of the excessive heat gain during summer. The handling of the facades becomes very important in order to make them responsive towards climatic changes. Each facade is designed individually according to the climatic needs. The north and western facades will be protected by roof overhangs, balconies or shading box devices. The façade design also keeps privacy and good neighbourly principles in mind.

Jozanne Spies 98028996 March/prof 2006



GROUND LEVEL
 SCALE 1:100

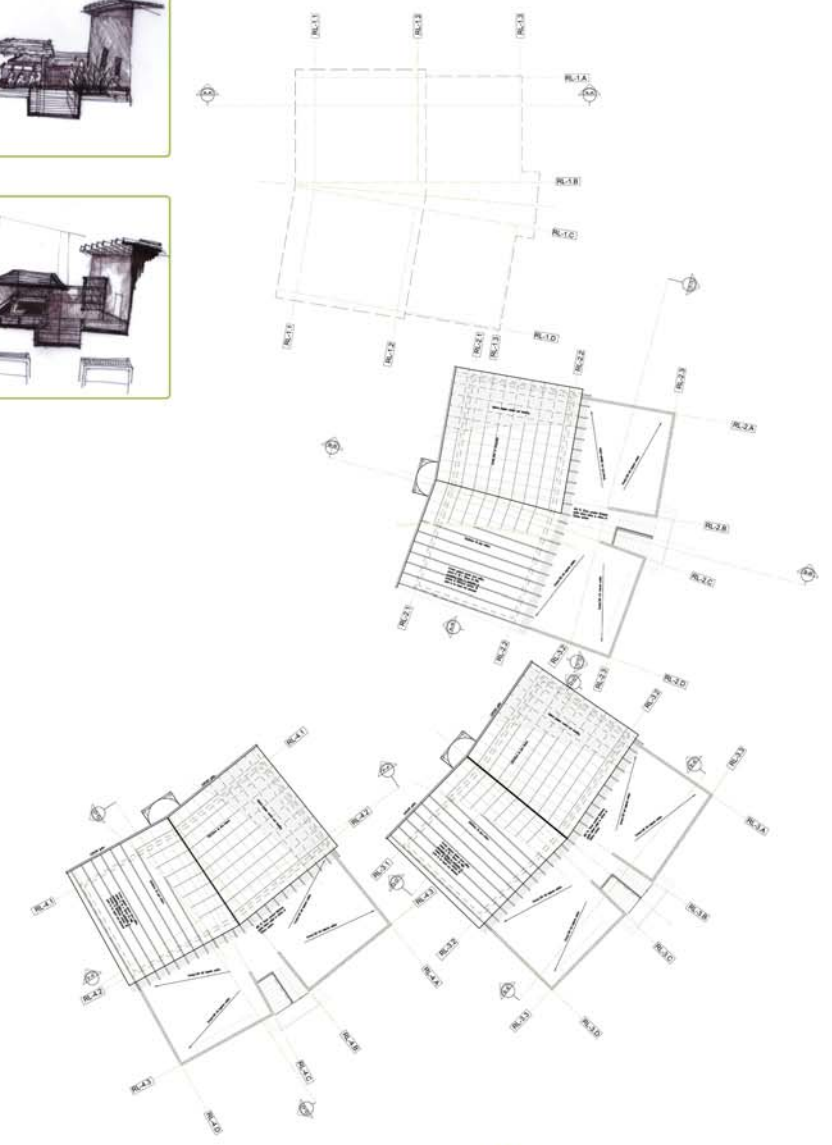
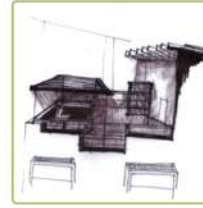




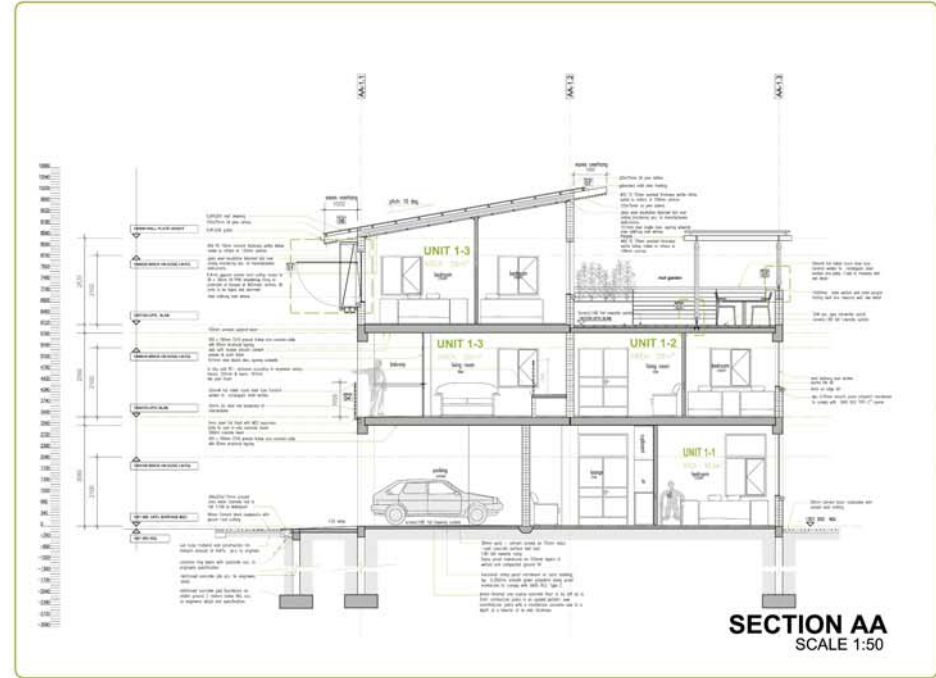
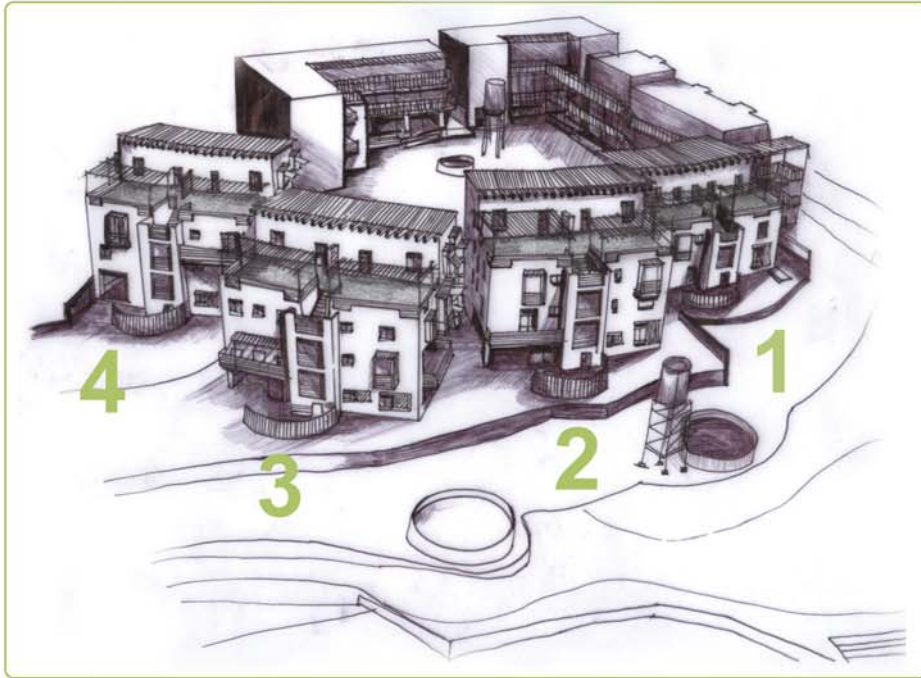
- Bachelor Units
- Unit 4-6 Area: 38m²
 - open plan lounge and kitchen
 - bathroom
 - single bedroom
- Unit 4-7 + Loft Area: 38m²
 - open plan
 - lounge
 - bedroom
 - bakery
 - bathroom
- Unit 4-8 + Loft Area: 38m²
 - open plan
 - lounge
 - bedroom
 - bakery
 - bathroom
- Unit 4-9 Area: 38m²
 - open plan lounge and kitchen
 - bathroom
 - single bedroom



 **LOFT FLOOR PLAN**
 SCALE 1:100

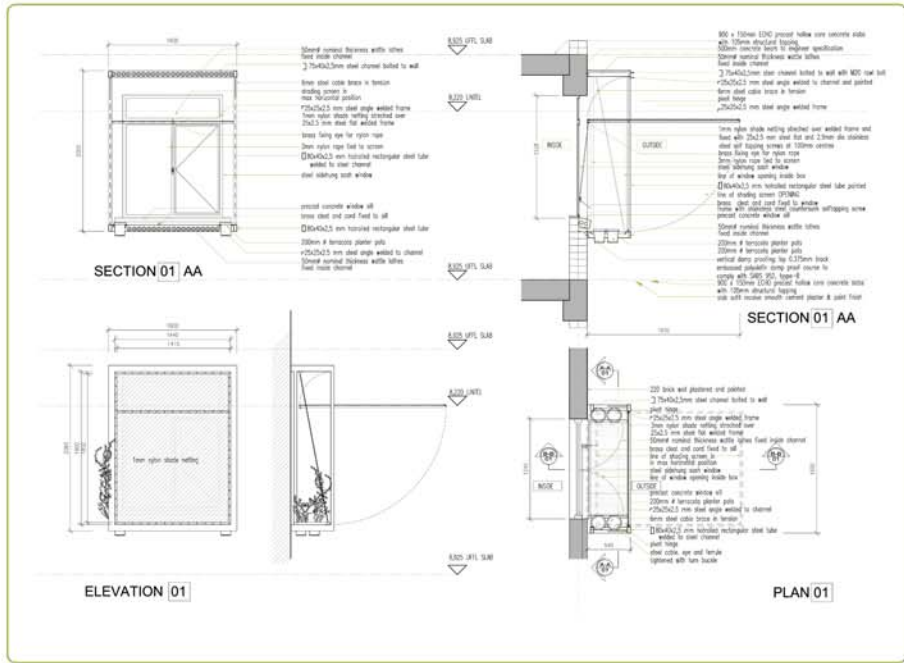


 **ROOF PLAN**
 SCALE 1:100

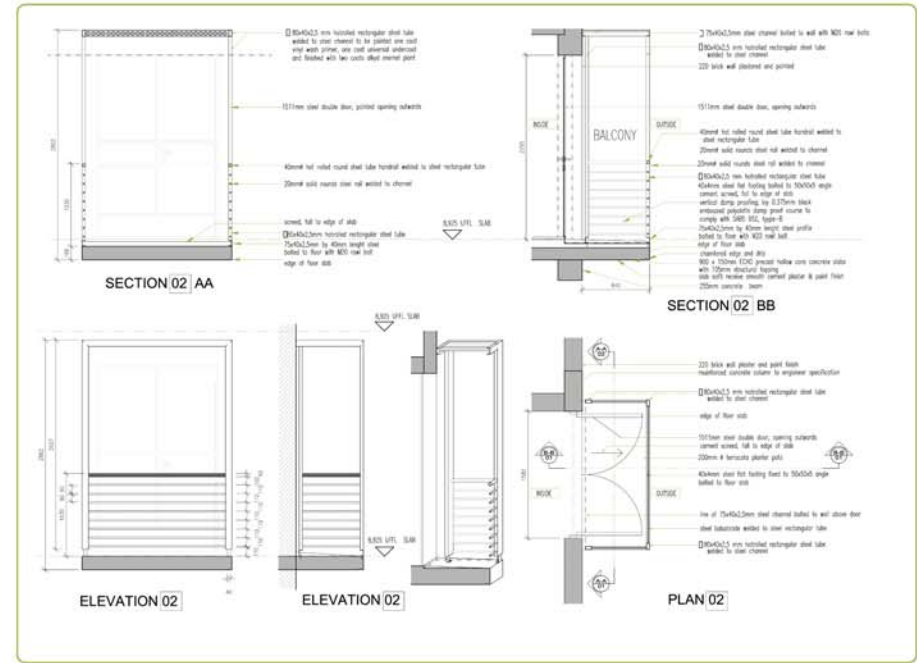


BLOCK 1

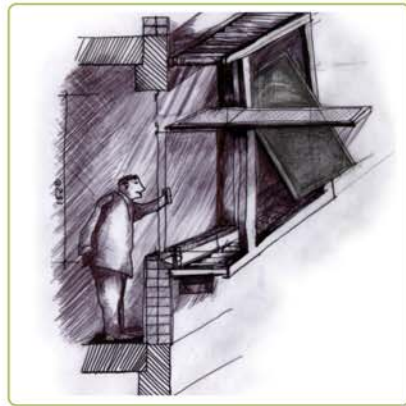


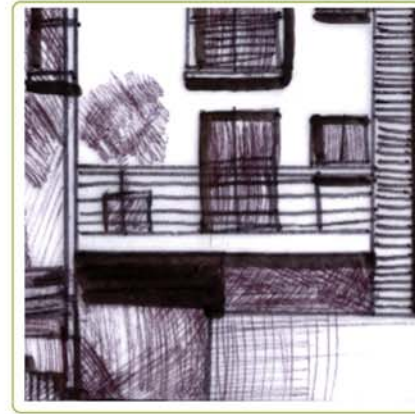
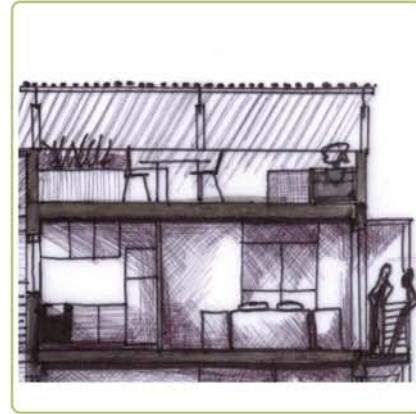
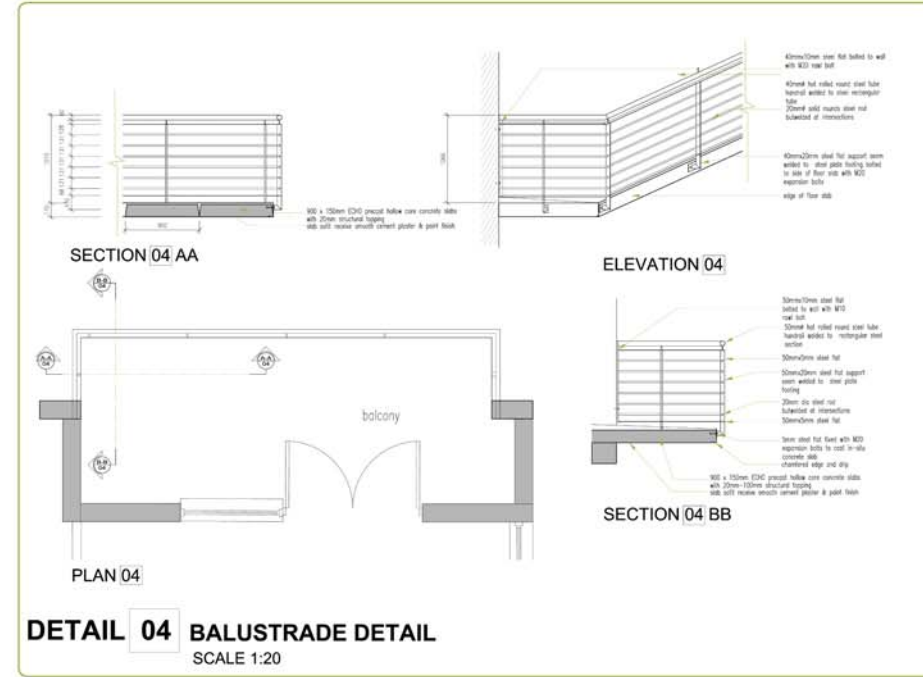
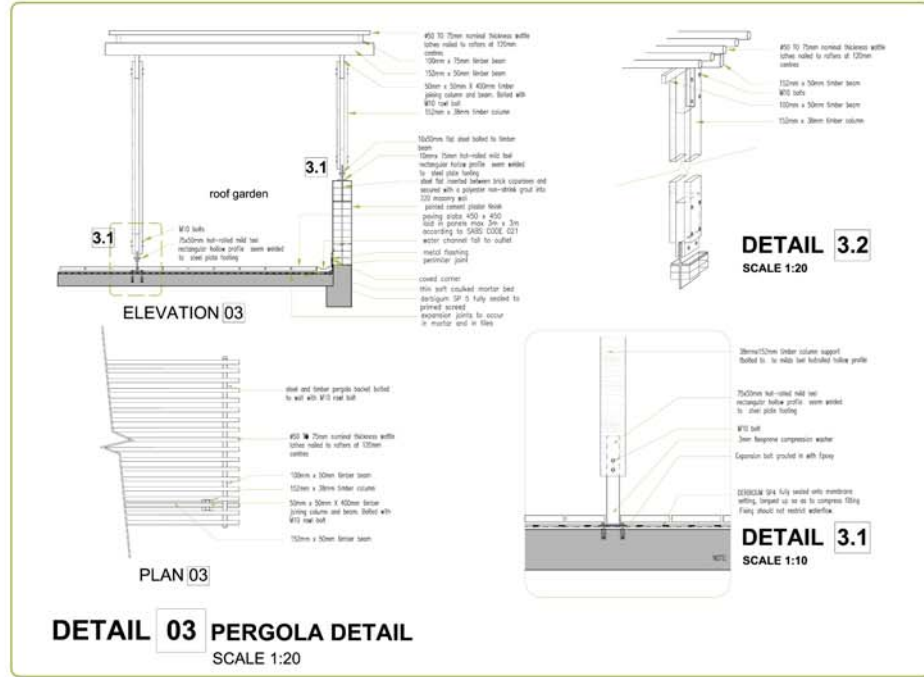


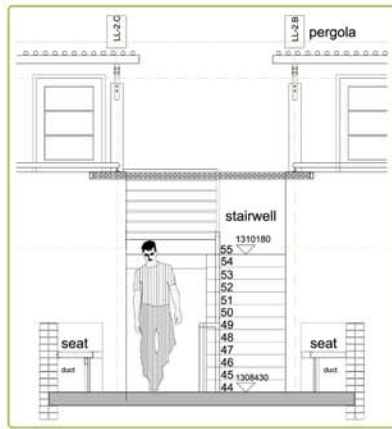
DETAIL 01 WINDOW BOX
 SCALE 1:20



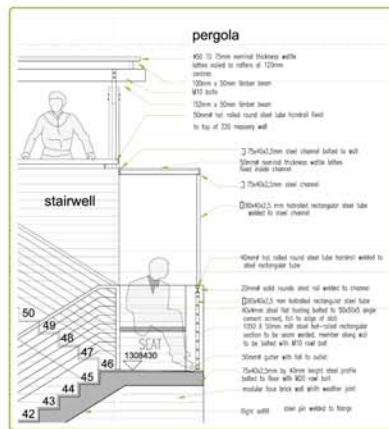
DETAIL 02 BALCONY BOX
 SCALE 1:30



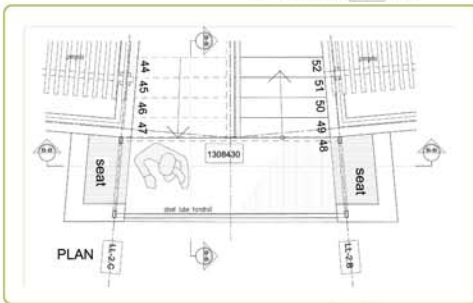




SECTION 05 AA

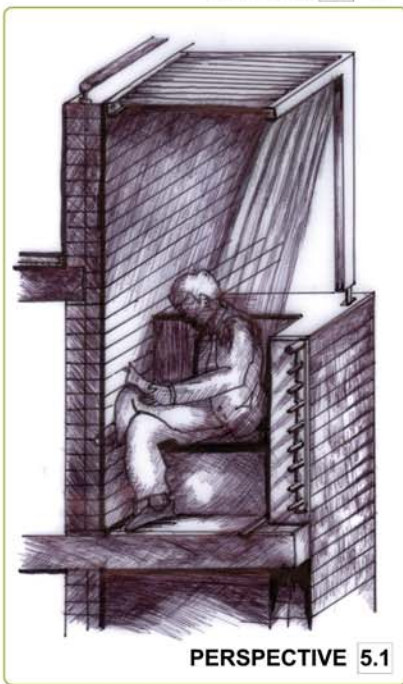


SECTION 05 BB

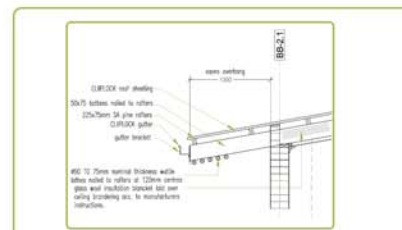


PLAN 05

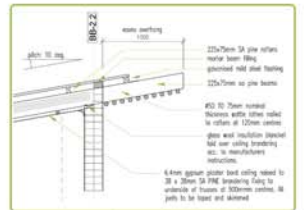
DETAIL 05 STAIRWELL DETAIL
SCALE 1:20



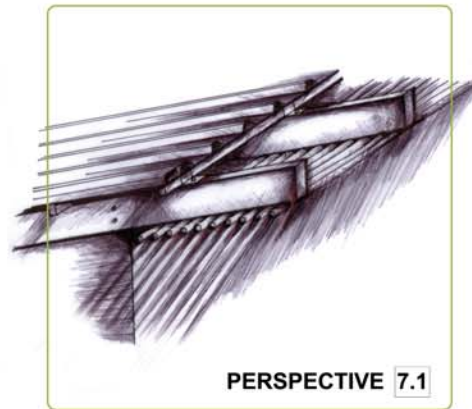
PERSPECTIVE 5.1



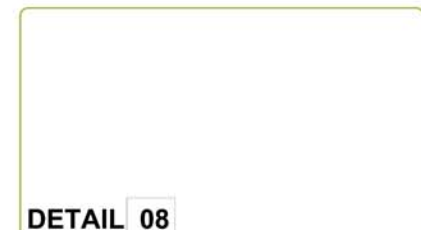
DETAIL 06
ROOF OVERHANG DETAIL
SCALE 1:20



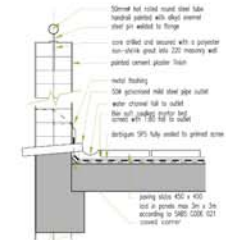
DETAIL 07
ROOF OVERHANG DETAIL
SCALE 1:20



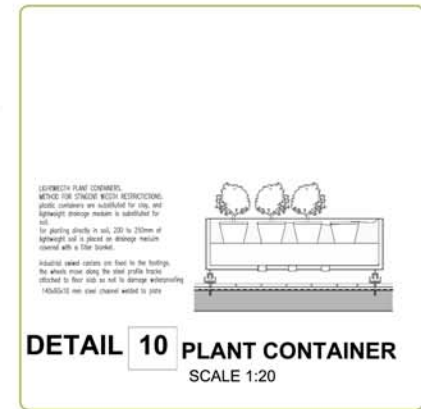
PERSPECTIVE 7.1



DETAIL 08
STEEL HANDRAIL DETAIL
SCALE 1:10



DETAIL 09
RAIN WATER DETAIL
SCALE 1:10



DETAIL 10 PLANT CONTAINER
SCALE 1:20