

Influenza Surveillance in 15 Countries in Africa, 2006-2010

Jennifer Michalove Radin,¹ Mark A. Katz,^{1, 2} Stefano Tempia,^{1, 3, 4} Ndahwouh Talla Nzussouo,^{1, 5} Richard Davis,¹ Jazmin Duque,^{1, 6} Adebayo Adedeji,⁷ Michael Jeroen Adjabeng,⁸ William Kwabena Ampofo,⁹ Workenesh Ayele,¹⁰ Barnabas Bakamutumaho,¹¹ Amal Barakat,¹² Abderahman Benmamoun,¹³ Adam L. Cohen,^{1, 3} Cheryl Cohen,¹⁴ Ibrahim T. Dalhatu,¹⁵ Coulibaly Daouda,¹⁶ Erica Dueger,^{1, 5} Moisés Francisco,¹⁷ Jean-Michel Heraud,¹⁸ Daddi Jima,¹⁰ Alice Kabanda,¹⁹ Hervé Kadjo,²⁰ Amr Kandeel,²¹ Stomy Karhemere,²² Frances Kasolo,²³ Karl C. Kronmann,⁵ Mazyanga L. Mazaba Liwewe,²⁴ Julius Julian Lutwama,²⁵ Miriam Matonya,²⁶ Vida Mmbaga,²⁶ Joshua Mott,^{1, 2} Marie Aimee Muhimpundu,²⁷ Phillip Muthoka,²⁸ Henry Njuguna,² Laurence Randrianasolo,¹⁸ Samir Refaey,²¹ Charlene Sanders,¹ Maha Talaat,²¹ Andros Theos,²⁴ Fátima Valente,¹⁷ Marietjie Venter,^{14, 29} Celia Woodfill,³⁰ Joseph Bresee,¹ Ann Moen,¹ Marc-Alain Widdowson^{1*}

¹Centers for Disease Control and Prevention, USA; ²Centers for Disease Control and Prevention, Kenya; ³Centers for Disease Control and Prevention, South Africa; ⁴CTS Global, Inc.; ⁵U.S. Naval Medical Research Unit No.3, Cairo, Egypt; ⁶Battelle, Atlanta, GA; ⁷Federal Ministry of Health; Nigeria, ⁸Disease Surveillance Department, Ghana Health Service; ⁹Noguchi Memorial Institute for Medical Research, University of Ghana; ¹⁰Ethiopian Health and Nutrition Research Institute; ¹¹Uganda Virus Research Institute ; ¹²Institut National d'Hygiène, Ministère de la Santé, Rabat, Morocco; ¹³Direction de l'épidémiologie et de lutte contre les maladies, Ministère de la santé, Rabat, Morocco; ¹⁴Centre for Respiratory Diseases and Meningitis, National Institute for Communicable Diseases, a division of the National Health Laboratory Services, South Africa; ¹⁵Centers for Disease Control and Prevention, Nigeria; ¹⁶National Institute Public Hygiene/Ministry of Health, Côte d'Ivoire; Angola Ministry of Health; ¹⁸Institut Pasteur de Madagascar; ¹⁹National Reference Laboratory, Rwanda; ²⁰Institut Pasteur de Côte d'Ivoire; ²¹Ministry of Health and Population, Egypt; ²²Institut National de Recherche Bio-médicale, Democratic

Republic of Congo; ²³World Health Organization/AFRO ; ²⁴Ministry of Health, Zambia; ²⁵Centers for Disease Control and Prevention, Uganda; ²⁶Tanzania Ministry of Health ; ²⁷Ministry of Health, Rwanda ; ²⁸Ministry of Public Health and Sanitation, Kenya ; ²⁹Zoonosis Unit, Department Medical Virology, University of Pretoria ; ³⁰World Health Organization

*Correspondence : Marc-Alain Widdowson, VetMB, MSc, MA, International Epidemiology and Research Team, Epidemiology Branch, Influenza Division, Centers for Disease Control and Prevention, 1600 Clifton Rd NE MS-A32, Atlanta, GA, 30333, USA (zux5@cdc.gov)

Disclaimer: This publication and its contents are solely the responsibility of the authors and do not necessarily represent the official views of the Centers for Disease Control and Prevention.

Abstract (Word count: 192)

BACKGROUND: In response to the potential threat of an influenza pandemic, several international institutions and governments, in partnership with African countries, invested in the development of epidemiologic and laboratory influenza surveillance capacity in Africa.

METHODS: We used a standardized form to collect information on influenza surveillance system characteristics, the number and percent of influenza-positive patients with influenza-like illness (ILI) or severe acute respiratory infections (SARI) and virologic data.

RESULTS: Between 2006 and 2010, the number of ILI and SARI sites in 15 African countries increased from 21 to 127 and from 2 to 98, respectively. Influenza was detected in 22% of ILI cases and 10% of SARI cases. Children 0-4 years accounted for 48% all ILI and SARI cases of which 20% and 10% respectively were positive for influenza. Influenza peaks were generally discernible in North and South Africa. Substantial co-circulation of influenza A and B occurred most years.

CONCLUSIONS: Influenza is a major cause of respiratory illness in Africa, especially in children. Further strengthening influenza surveillance, along with conducting special studies on influenza burden, cost of illness, and role of other respiratory pathogens will help detect novel influenza viruses and inform and develop targeted influenza prevention policy decisions in the region.

Key words: Influenza; Africa; influenza-like illness; severe acute respiratory illness; children; seasonality; virologic.

(Word count: 2,710)

INTRODUCTION

Influenza infection is a major cause of morbidity and mortality worldwide. At particular risk of severe disease are young children, pregnant women, the elderly, and persons with underlying medical conditions [1, 2]. The burden and epidemiology of influenza have been studied almost exclusively in developed settings, but influenza may have a different epidemiology in lesser resourced settings such as much of Africa due to lack of healthcare access, untreated co-morbidities such as human immunodeficiency virus (HIV) and tuberculosis, malnutrition and other factors.

The few outbreaks of seasonal influenza reported in Africa have reported alarmingly high case-fatality proportions [3-5]. Furthermore, pandemic influenza strains can emerge and/or spread undetected in settings with less extensive surveillance systems, and pandemic influenza has the potential to cause relatively greater morbidity and mortality in resource-poor countries. In 2003, avian influenza A(H5N1) spread to several countries in Asia and eventually reached Africa [6], infecting humans in three countries on the continent (Djibouti, Egypt and Nigeria) [7]. Analysis of mortality data from the 1918 pandemic found that increased mortality was associated with lower income countries such as those found in the African region [8].

In response to this pandemic threat, beginning in 2006, several international institutions and governments, in partnership with African countries, invested in the development of epidemiologic and laboratory influenza surveillance capacity in Africa. This expanded surveillance allowed for detection and monitoring of influenza A(H1N1)pdm09, but to date neither pandemic nor seasonal influenza have been fully described in the region. A recent review of literature published from 1980 to 2009 found that most countries in sub-Saharan Africa have inadequate data for informing influenza public health

policies. Substantive data on influenza incidence, case-fatality ratios, seasonality, economic burden, and the contribution of influenza to adult hospitalizations for acute respiratory infection are very limited [9].

In this paper, we document influenza surveillance capacity from 2006 to 2010 in 15 African countries that received financial and/or technical support from the United States Centers for Disease Control and Prevention (CDC) as well as from other sources. In 2009, efforts to generate and disseminate data on the burden and epidemiology of influenza disease in Africa were formalized into the African Network for Influenza Surveillance and Epidemiology (ANISE). We summarize surveillance data collected through ANISE to describe influenza age distribution, seasonality, strain circulation and percent of respiratory disease in which influenza virus was detected.

METHODS

We used a standardized form to collect data on surveillance system characteristics, including the date surveillance started and the number of sites conducting surveillance for influenza like illness (ILI) and/or severe acute respiratory infection (SARI). We also collated information on the number of ILI and SARI specimens collected and tested, the percentage of these that tested positive for influenza by age and by month, and information on influenza seasonal and pandemic strains. We also collated information from the World Health Organization's (WHO) influenza reporting system, FluNet, to understand how reporting to WHO increased over time [10]. For the purposes of this paper, the term "African countries" refers to all 54 countries on the continent, irrespective of WHO region.

We reviewed the case definitions used in each country and compared them to the following case definitions that have been recommended by the World Health Organization and the PanAmerican Health Organization as follows:

ILI: Any person with sudden onset of fever $>38^{\circ}\text{C}$ AND cough or sore throat in the absence of other diagnosis [11].

SARI: Persons >5 years old presenting with symptoms of acute lower respiratory infection with sudden onset of fever $>38^{\circ}\text{C}$, AND cough or sore throat, AND shortness of breath or difficulty breathing, AND requiring hospitalization [11, 12].

Persons ≤ 5 years: Integrated Management of Childhood Illnesses case definition for pneumonia and severe pneumonia [11, 13].

South Africa used case definitions that varied slightly from the standard definitions described above; persons 3 months to 5 years of age were classified as a SARI case if they had a physician-diagnosed lower respiratory tract infection irrespective of signs and symptoms and persons 2 days to 2 months were classified as a SARI case if they had a diagnosis of suspected sepsis or a physician-diagnosed lower respiratory tract infection irrespective of signs and symptoms.

Ministries of health and other partner institutions were contacted in Angola, Côte D'Ivoire, Democratic Republic of Congo (DRC), Egypt, Ethiopia, Ghana, Kenya, Madagascar, Morocco, Nigeria, Rwanda, South Africa, Tanzania, Uganda and Zambia. To examine how surveillance capacity changed over time, we aggregated countries into five separate sub-regions: North Africa (Egypt and Morocco), West Africa (Côte D'Ivoire, Ghana, and Nigeria), East Africa (Ethiopia, Kenya, Rwanda, Tanzania, and Uganda) and South/Central Africa (Angola, DRC, Madagascar, South Africa and Zambia), and plotted the number of surveillance sites, specimens collected and number of positive influenza samples by year in these sub-regions. To assess the role of influenza as a cause of ILI and SARI, we calculated the percentage of specimens positive for influenza during complete years of surveillance in each country and by age group. Where known, we excluded outbreak-related cases from the analysis. We distinguished between private sector surveillance systems with dedicated staff and national ILI surveillance systems by

networks of private physicians. To describe seasonality, we plotted the monthly number and proportion of influenza-positive specimens for each of the sub-regions, but described South Africa separately as it is a temperate country with characteristic Southern Hemisphere seasonality. We aggregated data using the same sub-regions to describe influenza circulation by seasonal and pandemic strains. All countries used reverse transcription polymerase chain reaction (RT-PCR) methods to test patient specimens.

RESULTS

From 2006 through 2010, the number of African countries conducting surveillance as part of a CDC-led consortium increased from 6 to 15 (Figure 1). During that same time period, these countries increased the number of ILI sites from 21 to 127, the number of ILI private practitioner sites from 210 to 290 and the number of SARI sites from 2 to 98 (Figure 2 and Table 1). Most of the countries (11 of 15) had ILI and SARI surveillance sites inside and outside the capital city or economic centre (Table 2). From 2006 to 2010, the number of specimens tested in these 15 countries per year increased from 4,623 to 44,763 and the number of influenza-positive specimens increased from 1,474 to 6,240 (Figure 2). Similarly, from 2006 to 2010, the number of African countries that reported data to WHO's FluNet increased from 8 to 26. The 15 countries featured in this paper reported to FluNet; they reported 1,047 influenza-positives out of 3,157 specimens tested in 2006 and 8,488 influenza-positives out of 45,891 specimens tested in 2010 [10].

Among the 15 countries that conducted at least one complete year of surveillance for ILI between 2006 and 2010, 21.7% of ILI cases (5,165/69,860) tested positive for influenza, ranging from 6.7% in Angola to 40.4% in Madagascar. Overall, 10.1% of SARI cases (4,427/43,620) tested positive for influenza, ranging from 4.6% in Ethiopia to 25.5% in Côte D'Ivoire (Table 1).

The highest number of cases tested was among children less than 5 years of age, among which 27,135 ILI cases and 27,029 SARI cases were tested for influenza. Children less than 5 years of age accounted

for 48% (54,164/113,164) of all ILI and SARI cases tested and 39% (8,155/21,090) of all influenza-positive cases. The ILI percent positive was highest (34%) in the 10-14 year age group but was also high among other age groups, with the lowest ILI percent positive (17%) among those >65 years. The SARI percent positive was highest (12%) in children 10-14 years but was also high among the other young age groups, with the lowest SARI percent positive (3%) among those >65 years (Figure 3).

Seasonal patterns were difficult to discern because relatively few specimens were collected before 2009. The North African sub-region (Egypt and Morocco) and the country of South Africa had the most clearly defined seasons and they are both temperate. In North Africa, the number and percentage of influenza-positive specimens were usually highest between November and January of each year. In South Africa, the number and percentage of influenza-positive specimens were usually highest between June and August of each year. The West, East and South/Central African sub-regions had less clearly defined seasonal peaks. East Africa had a higher prevalence of influenza in July through October (Figure 4).

Substantial co-circulation of influenza A and B occurred most years in most sub-regions. In 2006, 2007, and 2009, three out of the four sub-regions had the same predominant influenza strain. In 2006 and 2007, B was the predominant strain in every region except South/Central Africa where H3N2 predominated in 2006 and H1N1 in 2007. In 2008, strain predominance varied across sub-regions. In 2009, influenza A(H1N1)pdm09 was the predominant strain in every region except West Africa where H3N2 predominated. In 2010, strain predominance varied across sub-regions: H3N2 predominated in East Africa, B predominated in South/Central Africa and North Africa, and influenza A(H1N1)pdm09 predominated in West Africa. Of note, predominance of influenza A(H1N1)pdm09 in West Africa occurred one year after it was predominantly circulating in the other African sub-regions (Figure 5).

DISCUSSION

We show that, since 2006, substantial progress has been made to improve surveillance of influenza in Africa. The number of countries conducting surveillance, the number of sentinel sites and the number of specimens tested have increased sharply, which has allowed for better understanding of seasonal influenza and the recent pandemic. The addition of sites conducting surveillance for SARI has allowed us to understand the role of influenza in hospitalized patients, a group of patients that are especially relevant from a clinical and public health perspective. Our data show that, as in the rest of the world, seasonal influenza is a substantial cause of respiratory disease in persons of all ages, associated on average with 22% of ILI and 10% of SARI. Influenza was consistently detected in a higher percentage of ILI cases than in SARI cases, which likely reflects the higher specificity of the ILI case definition for influenza compared to the SARI case definition [14]. Our findings regarding the percentage of influenza-positive ILI and SARI specimens are slightly higher than those reported by other resource-limited countries outside of Africa; a study in Bangladesh found that 10% of ILI cases and 6% of SARI cases seeking care between May 2007 through December 2008 tested positive for influenza by real time RT-PCR [15]. Studies in Cambodia and Indonesia found that 10% and 11% of ILI cases tested positive for influenza, respectively [16, 17].

In our study, the burden of respiratory disease and influenza was highest in children less than 5 years of age; approximately 48% of all ILI and SARI cases and 39% of all influenza-positive cases reported in these surveillance systems were from this age group. This finding is consistent with other studies in the region that have found that influenza is commonly identified in young children who suffer from acute respiratory illness [18-20]. Of note is in this study is that although children may be overrepresented in the surveillance, the role of influenza as a possible cause of 10-12% of respiratory disease hospitalizations is substantial. In the United States, young children bear a heavy burden of respiratory disease [21] and of influenza-associated hospitalizations [22], similar to our findings from Africa. Nonetheless, the age distribution of influenza-associated ILI and SARI in our study was likely influenced

by the low number of specimens collected previous to 2009, when seasonal influenza circulated, compared to 2009 and 2010, when influenza A(H1N1)pdm09 predominated. In other parts of the world such as the US, Mexico, and China, younger adults were disproportionately affected by influenza A(H1N1)pdm09, an age distribution that differed with other years dominated by seasonal influenza, when young children and the elderly tend to be the most affected age groups [23-25]. The age distribution of influenza in Africa may be affected by the high prevalence of HIV in adults. In Kenya, HIV infection predominately affects those under 65 years and was found to be a substantial risk factor for hospitalization for influenza disease [26]. In similar manner, HIV-infected persons hospitalized with influenza infection in South Africa have an increased risk of death compared to non-infected persons [27].

In our study, influenza peaks in the North African sub-region and in the country of South Africa corresponded to the northern and southern hemisphere's winter season, respectively. The West, East and South/Central African sub-regions had relatively undefined influenza transmission patterns. Several factors are likely to drive influenza seasonality, including climate, host distribution and behavior patterns. Laboratory studies have identified cold temperature, low relative humidity and, most recently, absolute humidity as important drivers of influenza transmission [28, 29]. It is unclear how these factors contribute to the lack of seasonality we observed in most of Africa. Our ability to interpret seasonality in this study is limited. Except for the country of South Africa, we do not present data on seasonality by country, and large climatic differences exist between and within countries. In addition, few specimens were collected during certain time periods in some countries.

The predominant influenza strain each year tended to be the same across most of the four sub-regions in Africa. Co-circulation of nearly all of the strains also occurred each year excluding 2006, which had minimal data. One regional strain difference of interest occurred in 2009, when influenza

A(H1N1)pdm09 spread quickly through the African continent except West Africa. Influenza A(H1N1)pdm09 transmission did not become predominant in West Africa until 2010, at which time it was declining and not predominant in the other sub-regions [30, 31].

Our findings have several limitations. These data only represent 15 of the 54 countries in the African continent. In addition, we cannot make conclusions about the absolute burden of influenza, only the potential contribution of influenza to respiratory disease since these are sentinel surveillance data. Moreover, we could not examine the true relative burden of influenza among children compared to older adults because samples may have been disproportionately collected from children since some sites were pediatric hospitals. Therefore, the relative burden of all-cause ILI and SARI in the <5 year age group compared to older children and adults may not be accurately represented here. We were also unable to compare the percent influenza-positivity of different subtypes by age. Nevertheless, the percentage of influenza-positive specimens in ILI and SARI cases likely reflects the relative contribution of influenza to illness in different age groups. The case definitions for SARI that were used also may not capture all patients with severe respiratory disease nor those who presented with non-respiratory symptoms (i.e., congestive heart failure) that may have been influenza-related. Countries may also have different sampling strategies for testing ILI and SARI cases and, despite the use of standard case definitions, sampling may be biased toward collection of more specimens from patients who are suspected on clinical grounds to have influenza. The increase in influenza-positive specimens in 2009 and 2010 may reflect specimens collected outside regular surveillance during the pandemic that were more likely to be positive for influenza, such as those gathered from contacts of confirmed cases.

Our analysis is only a first step to better understand influenza burden and epidemiology in Africa. Although this region faces substantial challenges in several areas of health, maintaining surveillance for respiratory illnesses, especially those associated with hospitalization, is critical for global health security

and to help support interventions to prevent such illnesses. Moreover, it is important to identify circulating viruses and evaluate how well they match with global vaccines in order to assess the value of vaccination **Young children in sub-Saharan Africa, bear a disproportionately high burden of acute respiratory infections compared to the rest of the world [32]. Maternal immunization may protect pregnant women, who are at high risk of severe influenza illness, and newborns for the first 3-6 months life [33], when the risk of severe influenza illness is elevated [34].**

Since the global emergence of avian influenza A(H5N1), efforts by countries, CDC, Institut Pasteur, WHO, and other organizations have been instrumental in increasing surveillance efforts in the region. It is not possible to attribute the increase in surveillance to any one effort.

This multi-institutional commitment to respiratory disease surveillance will likely remain for time being, though will not be indefinite, and individual countries governments and institutions need to take steps now towards sustainability: to strengthen, and if necessary, rightsize these surveillance systems to provide nationally relevant data on influenza circulation, risk groups and burden. Some degree of international support will likely be needed for some time, though as the burden of influenza is documented, this may garner support from other partners in the global health community. Leveraging efforts to conduct surveillance for other vaccine-preventable diseases and priority diseases will likely be necessary to help ensure sustainability. Further strengthening influenza surveillance in Africa, along with conducting special studies on influenza burden, risk groups, cost of illness, the role of other respiratory pathogens and the efficacy and applicability of new vaccine technologies and strategies remains critical to determine the epidemiology and relative importance of influenza in Africa, and to monitor for novel influenza strains. Very little is known on the role of comorbidities such as malaria, tuberculosis and HIV on influenza severity in Africa, nor on the burden among children who may not have access to health care. Annual, universal vaccination in Africa is clearly not an option in the foreseeable future, however,

as global manufacturing capacity increases, and new vaccines and vaccination strategies are developed, surveillance and other data can inform policy decisions on targeted vaccination of risk groups even of only for a short high risk period such as during pregnancy or early infancy.

NOTES

Related presentations: Portions of the data in this manuscript were presented at the 3rd Annual African Network for Influenza Surveillance and Epidemiology (ANISE) Meeting, Nairobi, Kenya, Feb 1-3, 2012 (<https://www.team-psa.com/anise/2012/home.asp>).

Potential conflicts of interest: None reported.

Funding statement: The work presented in this manuscript was funded completely or in part by host governments, Institute Pasteur, and cooperative agreements with the U.S. Centers for Disease Control and Prevention and/or the U.S. Department of Defense.

REFERENCES

1. Fiore AE, Uyeki TM, Broder K, et al. Prevention and control of influenza with vaccines: recommendations of the Advisory Committee on Immunization Practices (ACIP), 2010. *MMWR Recomm Rep* **2010**; 59:1-62.
2. WHO. Influenza Fact Sheet. Available at: <http://www.who.int/mediacentre/factsheets/fs211/en/>. Accessed 13 October 2011.
3. CDC. Influenza outbreak--Madagascar, July-August 2002. *MMWR Morb Mortal Wkly Rep* **2002**; 51:1016-8.
4. Soares JL, Ratsitorahina M, Rakoto Andrianarivelo M, et al. [Epidemics of acute respiratory infections in Madagascar in 2002: from alert to confirmation]. *Arch Inst Pasteur Madagascar* **2003**; 69:12-9.
5. WHO. Influenza outbreak in the district of Bosobolo, Democratic Republic of the Congo, November-December 2002. *Wkly Epidemiol Rec* **2003**; 78:94-6.
6. WHO. WHO/ Avian Influenza. Available at: http://www.who.int/mediacentre/factsheets/avian_influenza/en/. Accessed 12 December 2011.
7. WHO. Cumulative Number of Confirmed Human Cases of Avian Influenza A/(H5N1) Reported to WHO, 2003-2011. Available at: http://www.who.int/influenza/human_animal_interface/EN_GIP_LatestCumulativeNumberH5N1cases.pdf. Accessed 8 October 2011.
8. Murray CJ, Lopez AD, Chin B, Feehan D, Hill KH. Estimation of potential global pandemic influenza mortality on the basis of vital registry data from the 1918-20 pandemic: a quantitative analysis. *Lancet* **2006**; 368:2211-8.
9. Gessner BD, Shindo N, Briand S. Seasonal influenza epidemiology in sub-Saharan Africa: a systematic review. *Lancet Infect Dis* **2011**; 11:223-35.
10. WHO. WHO/ FluNet. Available at: www.who.int/fluNet. Accessed 10 November 2011.

11. Ortiz JR, Sotomayor V, Uez OC, et al. Strategy to enhance influenza surveillance worldwide. *Emerg Infect Dis* **2009**; 15:1271-8.
12. PAHO, CDC. PAHO-CDC Generic Protocol for Influenza Surveillance. Available at: <http://www.paho.org/english/ad/dpc/cd/flu-snl-gpis.pdf>. Accessed 8 October 2011.
13. WHO. IMCI: Integrated Management of Childhood Illness Handbook, **2005**.
14. Murray EL, Khagayi S, Ope M, et al. What are the most sensitive and specific sign and symptom combinations for influenza in patients hospitalized with acute respiratory illness? Results from western Kenya, January 2007-July 2010. *Epidemiol Infect* **2012**:1-11.
15. Zaman RU, Alamgir AS, Rahman M, et al. Influenza in outpatient ILI case-patients in national hospital-based surveillance, Bangladesh, 2007-2008. *PLoS One* **2009**; 4:e8452.
16. Mardy S, Ly S, Heng S, et al. Influenza activity in Cambodia during 2006-2008. *BMC Infect Dis* **2009**; 9:168.
17. Beckett CG, Kosasih H, Ma'roef C, et al. Influenza surveillance in Indonesia: 1999-2003. *Clin Infect Dis* **2004**; 39:443-9.
18. Nair H, Brooks WA, Katz M, et al. Global burden of respiratory infections due to seasonal influenza in young children: a systematic review and meta-analysis. *Lancet* **2011**; 378:1917-30.
19. Razanajatovo NH, Richard V, Hoffmann J, et al. Viral etiology of influenza-like illnesses in Antananarivo, Madagascar, July 2008 to June 2009. *PLoS One* **2011**; 6:e17579.
20. Barakat A, Ihazmad H, Benkaroum S, et al. Influenza surveillance among outpatients and inpatients in Morocco, 1996-2009. *PLoS One* **2011**; 6:e24579.
21. Rudan I, Tomaskovic L, Boschi-Pinto C, Campbell H. Global estimate of the incidence of clinical pneumonia among children under five years of age. *Bull World Health Organ* **2004**; 82:895-903.
22. CDC. CDC Seasonal Influenza (flu)-- Weekly report: Influenza summary update. Available at: <http://www.cdc.gov/flu/weekly/>. Accessed 2 May 2011.

23. Jhung MA, Swerdlow D, Olsen SJ, et al. Epidemiology of 2009 pandemic influenza A (H1N1) in the United States. *Clin Infect Dis* **2011**; 52 Suppl 1:S13-26.
24. Echevarria-Zuno S, Mejia-Arangure JM, Mar-Obeso AJ, et al. Infection and death from influenza A H1N1 virus in Mexico: a retrospective analysis. *Lancet* **2009**; 374:2072-9.
25. Zhang G, Xia Z, Liu Y, et al. Epidemiological and clinical features of 308 hospitalized patients with novel 2009 influenza A (H1N1) virus infection in China during the first pandemic wave. *Intervirology* **2011**; 54:164-70.
26. Ope MO, Katz MA, Aura B, et al. Risk factors for hospitalized seasonal influenza in rural western Kenya. *PLoS One* **2011**; 6:e20111.
27. Cohen C, Moyes J, Walaza S, et al. Increased Risk of Death amongst HIV-infected Persons Hospitalized with Influenza-confirmed Illness in South Africa, 2009-2010. 3rd Annual African Network for Influenza Surveillance and Epidemiology (ANISE) Meeting. Nairobi, Kenya, **2012**.
28. Tamerius J, Nelson MI, Zhou SZ, Viboud C, Miller MA, Alonso WJ. Global influenza seasonality: reconciling patterns across temperate and tropical regions. *Environ Health Perspect* **2011**; 119:439-45.
29. Viboud C, Alonso WJ, Simonsen L. Influenza in tropical regions. *PLoS Med* **2006**; 3:e89.
30. WHO. Situation Updates- Pandemic (H1N1) 2009. Available at: <http://www.who.int/csr/disease/swineflu/updates/en/>. Accessed 2 May 2011.
31. Michalove J, Nzussouo NT, Ousmane MD, et al. Delayed pandemic H1N1 transmission in west Africa, May 2009-March 2010. *Options for the Control of Influenza VII*. Hong Kong SAR, China, **2010**.
32. Lopez AD, Mathers CD, Ezzati M, Jamison DT, Murray CJ. Global and regional burden of disease and risk factors, 2001: systematic analysis of population health data. *Lancet* **2006**; 367:1747-57.
33. Zaman K, Roy E, Arifeen SE, et al. Effectiveness of maternal influenza immunization in mothers and infants. *N Engl J Med* **2008**; 359:1555-64.

34. Poehling KA, Edwards KM, Weinberg GA, et al. The underrecognized burden of influenza in young children. *N Engl J Med* **2006**; 355:31-40.

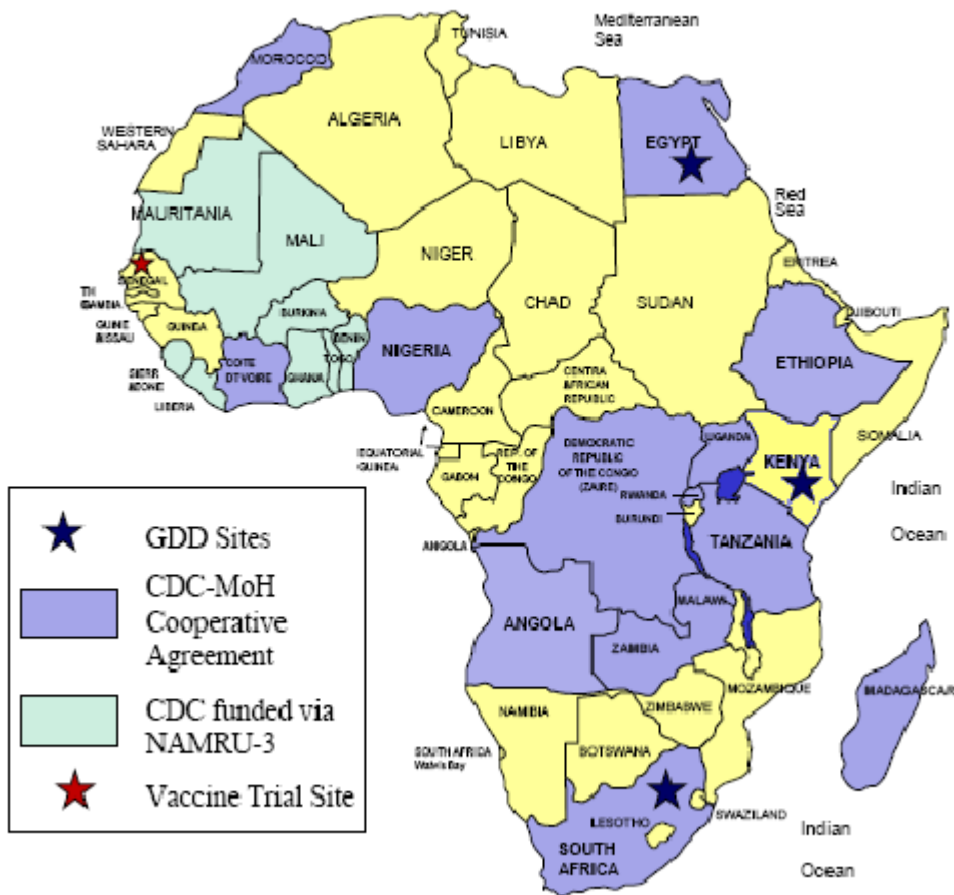
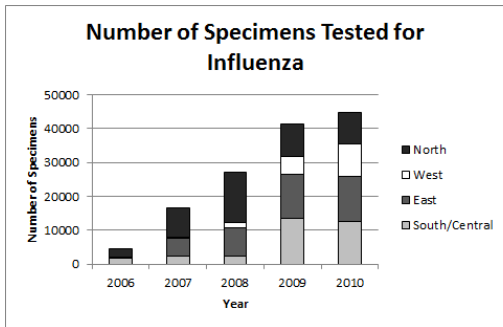
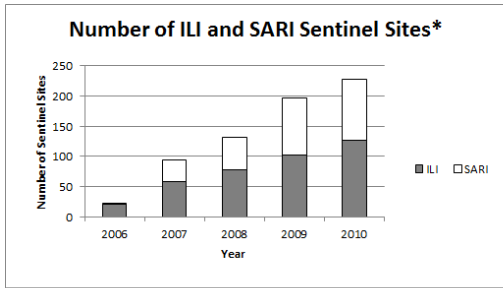
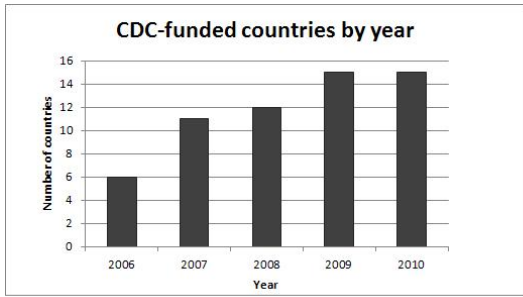


Figure 1. Map of CDC influenza activities in Africa



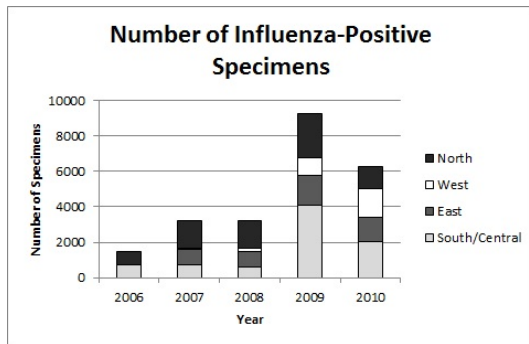


Figure 2: Number of CDC-funded countries, sentinel sites, specimens tested for influenza and influenza-positive specimens in 15 African countries, 2006-2010

*Excludes ILI private practitioners in Morocco and South Africa

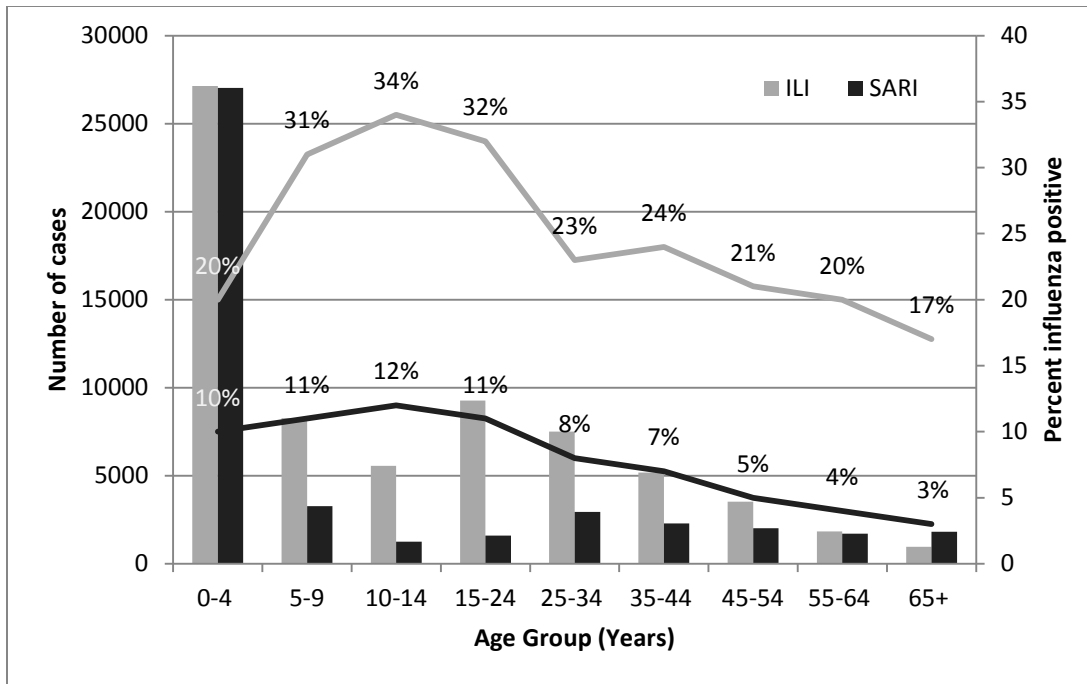
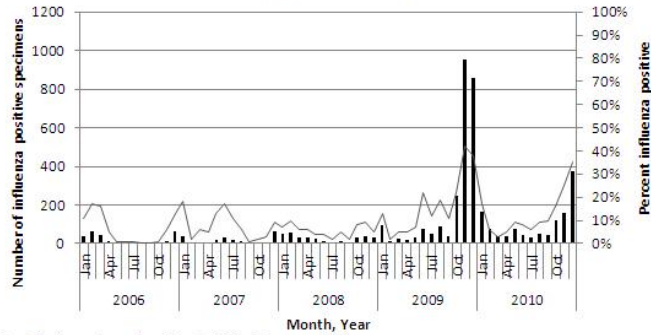


Figure 3. Number of ILI and SARI cases tested and proportion positive for influenza in 14 African countries* by age group, 2006-2010

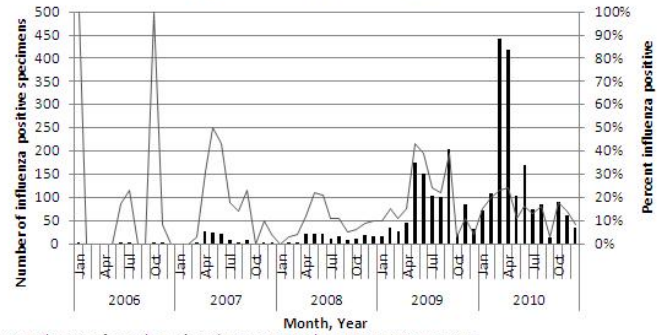
*Excludes Angola because their data could not be classified into the age group categories used in this figure.

**North Africa
(Egypt, Morocco)**



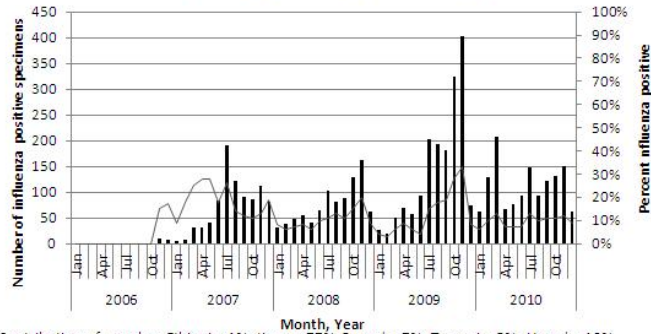
Contribution of samples: Egypt=73% ; Morocco=27%

**West Africa
(Côte D'Ivoire, Ghana, Nigeria)**



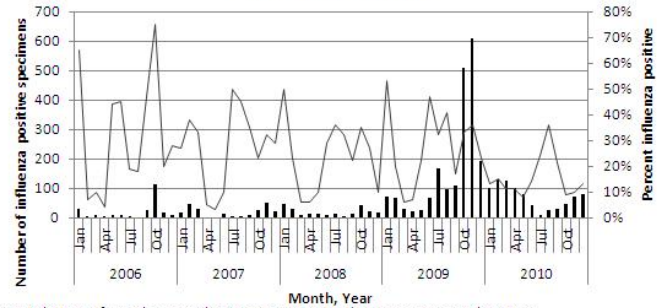
Contribution of samples: Côte D'Ivoire=28%; Ghana=50%; Nigeria =22%

**East Africa
(Ethiopia, Kenya, Rwanda, Tanzania, Uganda)**



Contribution of samples: Ethiopia=1%; Kenya=77%; Rwanda=7%; Tanzania=5%; Uganda=10%

**South/Central Africa
(Angola, Democratic Republic of Congo, Madagascar, Zambia)**



Contribution of samples: Angola=8%; DRC=28%; Madagascar=51%; Zambia=13%

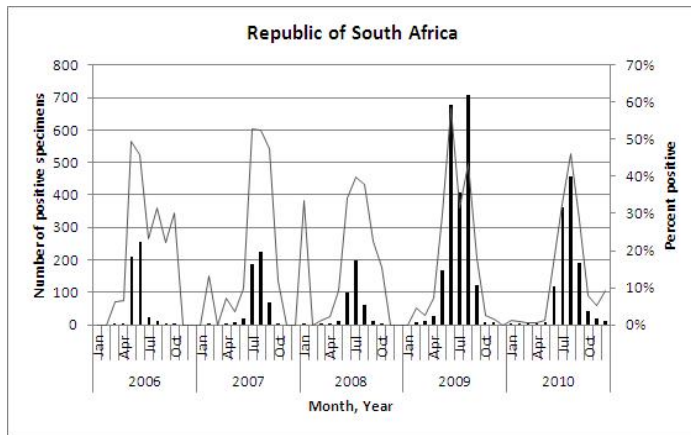
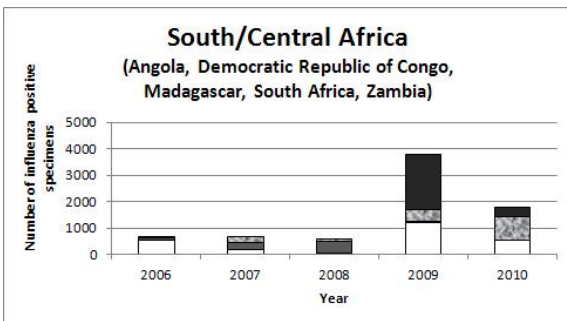
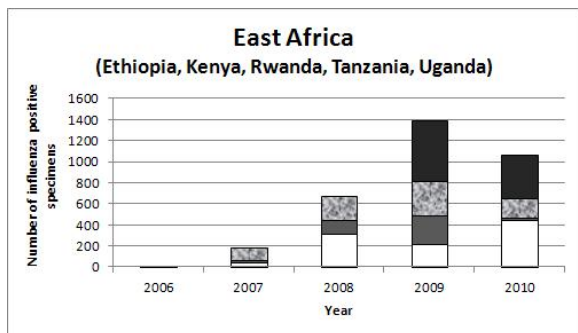
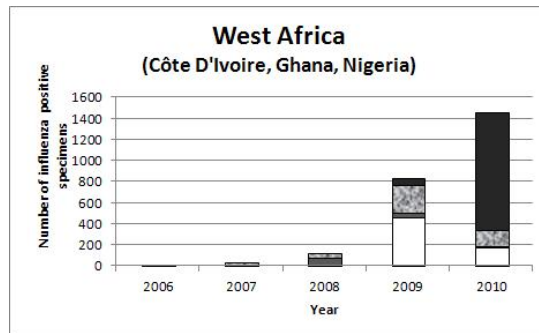
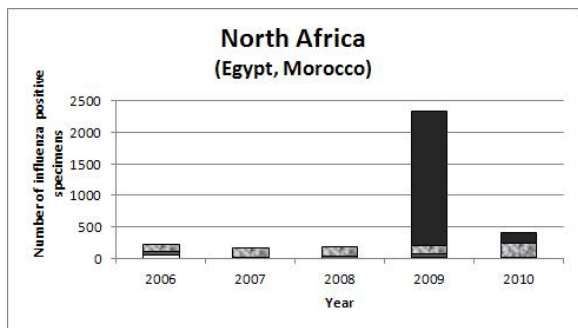


Figure 4: Number and percent influenza positive specimens in North, West, East and South/Central African sub-regions and the country of South Africa, 2006 to 2010



Key:

- A(H1N1)pdm09
- B
- H1N1
- H3N2

Figure 5: Number of influenza-positive specimens in North, West, East and South/Central Africa by seasonal and pandemic strain, 2006-2010

Table 1: Number of specimens tested and number influenza-positive by ILI and SARI.

Country	Date Surveillance Started	Number of Sentinel Sites (2006-2010)		Complete years of surveillance	Number of Specimens Tested for Influenza		Number of Influenza-Positive (% Positive)	
		ILI	SARI		ILI	SARI	ILI	SARI
Angola	Apr. 2008	0-6	0-6	2010	478	371	32 (6.7)	37 (10.0)
Côte D'Ivoire	Jan. 2003	5-9	0-8	2006-2010	4620	94	890 (19.3)	24 (25.5)
DRC	Jan. 2007	0-5	0-2	2009-2010	2510	662	404 (16.1)	77 (11.6)
Egypt	Feb. 1999	8-8	0-8	2006-2010	10777	9368	984 (9.1)	993 (10.6)
Ethiopia	Nov.2008	0-3	0-2	2008-2010	115	131	11 (9.6)	6 (4.6)
Ghana	Sept. 2007	0-19	0-3	2008-2010 (2009-2010 for SARI)	7669	688	1619 (21.1)	61(8.9)
Kenya	Oct. 2006	2-10	2-10	2007-2010	11577	17388	1739 (15.0)	1814 (10.4)
Madagascar	1972	6-31	0-17	2006-2010	5712	N/A	2310 (40.4)	N/A
Morocco	Feb. 1996	0-16 (99-110*)	0-16	2006-2010	7516	2323	2033 (27.0)	420 (18.1)
Nigeria	Apr. 2008	0-4	0-4	2009-2010	2748	755	225 (8.2)	43 (5.7)
Rwanda	Jul. 2008	0-6	0-6	2009-2010	1081	1471	273 (25.3)	96 (6.5)
South Africa	Feb. 1984 (ILI) Feb. 2009 (SARI)	(111-180)*	0-4	2006-2010	10164	8052	4089 (40.2)	701 (8.7)
Tanzania	May 2008	0-5	0-5	2009- 2010	1097	713	97 (8.8)	57 (8.0)
Uganda	May 2007	0-3	0-5	2008-2010	3359	642	421 (12.5)	41 (6.4)
Zambia	Apr. 2009	0-2	0-2	2010	437	962	38 (8.7)	57 (5.9)
Total		21-127 (210-290*)	2-98		69860	43620	15165 (21.7)	4427 (10.1)
Median % positive							15.6	8.9

*ILI Private Practitioners. In Morocco, ILI Private Practitioners only collect data from October through April.

Table 2. Number and location of ILI and SARI sites in 15 African Countries, 2010.

Country	ILI			SARI		
	Sites	In capital	Outside capital	Sites	In capital	Outside capital
Angola	6	4	2	6	4	2
Côte D'Ivoire	9	5*	4	8	3*	5
DRC	5	5	0	2	2	0
Egypt	8	2	6	8	2	6
Ethiopia	3	3	0	2	2	0
Ghana	19	6	13	3	2	1
Kenya	10	1	9	10	1	9
Madagascar	31	4	27	17	3	4
Morocco	16	1	15	16	1	16
Nigeria	4	1	3	4	1	3
Rwanda	6	2	4	6	2	4
South Africa	180	57*	123	4	1*	3
Tanzania	5	1	4	5	1	4
Uganda	3	3	0	5	3	2
Zambia	2	2	0	2	2	0

*In the country's economic centre; not the capital city.