

# Health Sciences Library



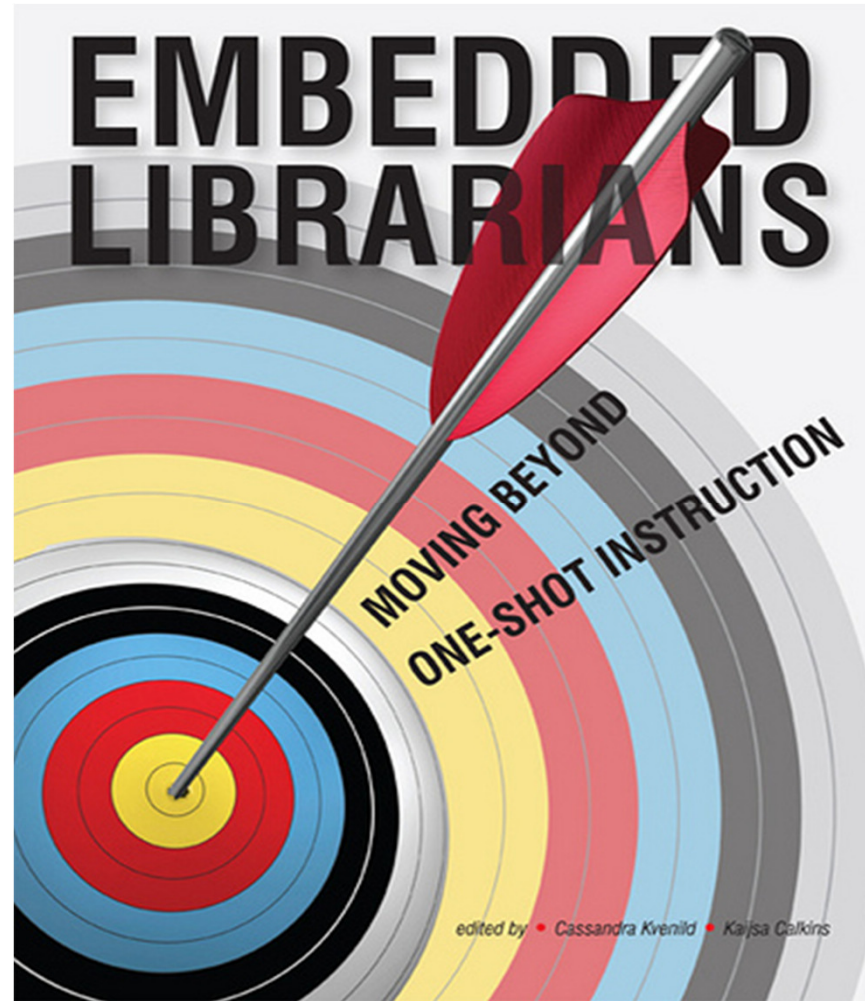
Estelle Grobler 2012

Faculty of Health Sciences



# Embed with the librarian

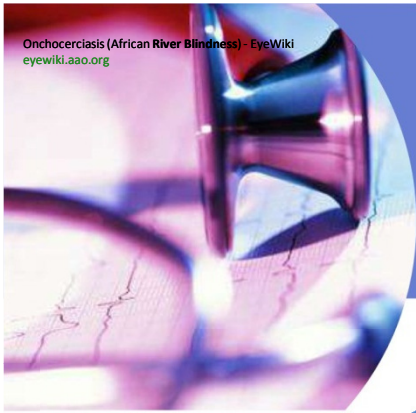
‘the way to go’



[http://www.google.co.za/search?hl=en&biw=1136&bih=669&tbm=isch&sa=1&q=image+embedded+librarian&oq=image+embedded+librarian&gs\\_l=img.3...272406.274453.0.275562.9.4.0.0.0.3.750.2266.4-2j1j1.4.0.efrsh..0.0...1.qds8aeyG4HY](http://www.google.co.za/search?hl=en&biw=1136&bih=669&tbm=isch&sa=1&q=image+embedded+librarian&oq=image+embedded+librarian&gs_l=img.3...272406.274453.0.275562.9.4.0.0.0.3.750.2266.4-2j1j1.4.0.efrsh..0.0...1.qds8aeyG4HY)

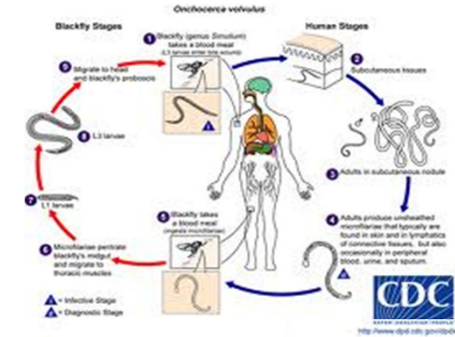
# Embed with the librarian

‘the way to go’



Estelle Grobler

Information Specialist



School of Health Systems and Public Health



Environmental Pollution & Management  
envis.maharashtra.gov.in





# Department: School of Health Systems and Public Health (SHSPH)





# Staff: School of Health Systems and Public Health with the Librarian

**The Librarian**





# Courses: SHSPH

***All courses are postgraduate courses and students must at least have a University Bachelors degree.***



<http://www.google.co.za/imgres?q=images+degree&hl=en&sa=X&tbm=isch&prmd=imvns&tbnid=r2w75vd0x1KlrM:&imgrefurl=http://www.linfield.edu/dce/>



# School of Health Systems and Public Health

Map of SHSPH footprint (according to Student database)

- **Students of SHS:**  
The postgraduate student population creates unique challenges. Students come from rural areas in South Africa and Africa and attend classes only once every three to four months.



Map No. 4645 Rev. 2 UNITED NATIONS  
March 2001

Department of Public Information  
Cartographic Section



# Communication







# Duties

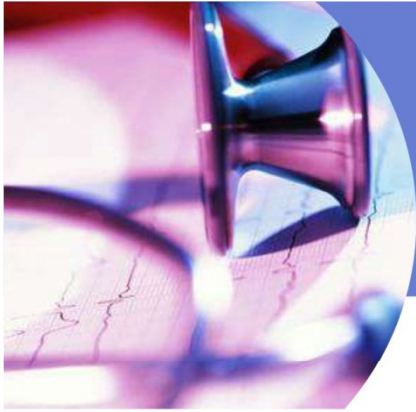
- **Introduced to students during 1<sup>st</sup> week of classes**
- **Explanation of my role as information specialist (embedded librarian)**
- **To cultivate trust and enable me to become part of SHSPH teaching and learning process.**
- **Available in-person, via e-mail, phone and library tools**
- **Train all new students as part of the departments induction programme**



# Training

- From the basic use of the catalogue to more extensive electronic sources. (e-journals, e-books, Databases etc.)
- Group and one to one training





# Outcomes of training: enables students to -

- Retrieve academic peer reviewed information online or in print (library catalogue)



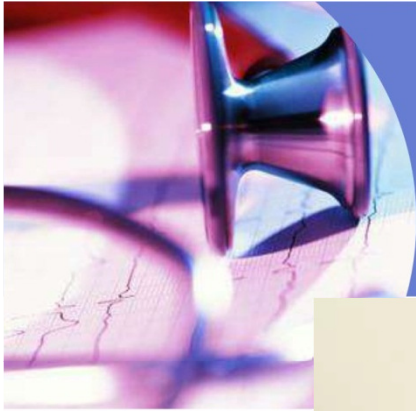


# Library tools



# How do I do it

## *Librarian with 2 offices*



Health Sciences library

- At the department (SHSPH)
  - Meet the staff and students on a daily basis to keep up to date with their information needs

UP Home » School of Health Systems and Public Health » Current students » Library and Computer Lab

Home	<b>Library and Computer Lab</b>
About Health Systems and Public Health	<b>Medical Library</b>
Academic Programmes	The library is open from 8:00 to 16:00 Monday to Fridays and on Saturdays from 8:30 - 13:00.
Staff	The library is on the 3rd floor of the HW Snyman Building.
Current students	Mrs Estelle Grobler is the SHSPH Information Specialist and she is available from 8:00 to 16:00, Monday to Friday.
Frequently asked questions	For more information at tel: 012 354 2316 or contact Estelle at <a href="mailto:estelle.grobler@up.ac.za">estelle.grobler@up.ac.za</a>
Projects	Although Mrs Grobler is based in the medical library, she is available in Room 5-17 (HW Snyman North) from 12:30 to 13:30 for SHSPH student enquiries.
Research	
Library and Computer Lab	
News and Events	
Public Health Seminars	
Enquiries	
SHSPH Biennial Reports	
Site links	
Faculties	



## Know SHSPH and their subject domain

- **Up to date with department's needs**
- **Share their goals and contribute to achieve the goals**
- **Be an integral member of the department and the Public health community**
- **Expert in using library tools**



## Research Portfolio

- **Research at UP is important**
- **My role as information specialist changed**
- **Involved in the research process**
- **Advise researchers about publishing (accredited journals, impact-factors, H-factors, Scientific writing course)**
- **Research portfolio is additional to my normal information specialist duties.**



# Support

- **Health Sciences library**
- **Dean - faculty of Health Sciences**
- **Deputy Dean of Research - faculty of Health Sciences**
- **Department of Health Systems and Public Health**
- **Information technology department**





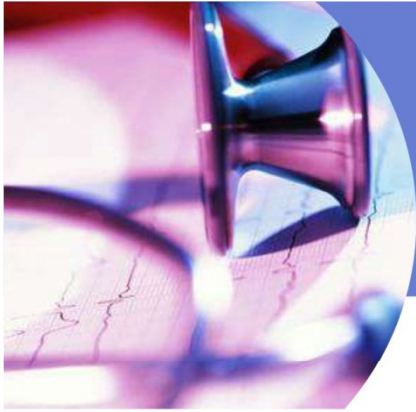


## Having good relationships and trust

- **Provide a professional, friendly and fast service to the faculty of Health Sciences**
- **Support research activities of staff and students**
- **Teach in research methodology module on key aspects**
- **Provide individual training on literature searches and reference software**
- **Assist Faculty Research Office with information, with searches, and journal impact factors**



- **Compile guidelines on reference styles and citation of scientific literature**
- **Promote advantages of Open Access Journals and assist with guidelines and journal information**
- **Provide a service and upload post-print papers on UPSpace**
- **Fulfill a critical role in the research process and is a major asset to the Faculty and UP.**



**Zikomo**

**Ke itumela**

**Eyalama**

**Chavucha**

**Thank You**

**Meda wo ase**

**Dankie**

**Haika**

**Tinotenda**

**Twalumba**