

Google joins the veterinary curriculum

**Erica van der Westhuizen and
Antoinette Lourens**

**2nd HICSA conference, Bloemfontein,
8-9 November 2004**



Introduction

- Instead of wringing our hands ... we should help them learn to use Web materials and resources more effectively

2003 OCLC report



Faculty of Veterinary Science, University of Pretoria



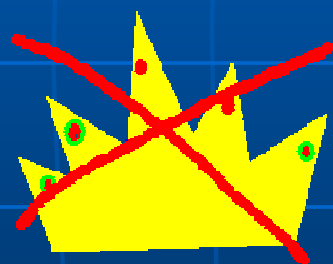
- Up-to-date facilities
- State-of-the-art computer laboratory – 130 workstations
- Free Internet for students all day





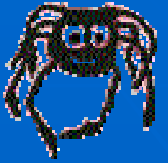
Google is King!

- Students do not need a librarian – or so they think!



Google™

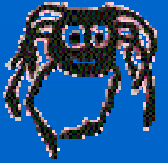
Disintermediation



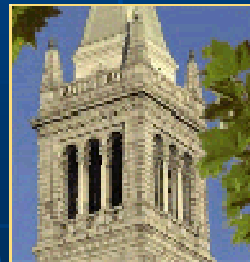
- Librarians/information specialists need to try new instructional approaches
(Agee and Antrim 2003)



Designing the course



- University at Albany, USA
- University of California Berkeley
- New Zealand course
- Plus others

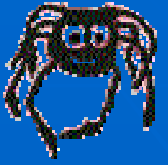


Berkeley
University of California



UNIVERSITY LIBRARIES

UNIVERSITY AT ALBANY State University of New York



Focus of the course

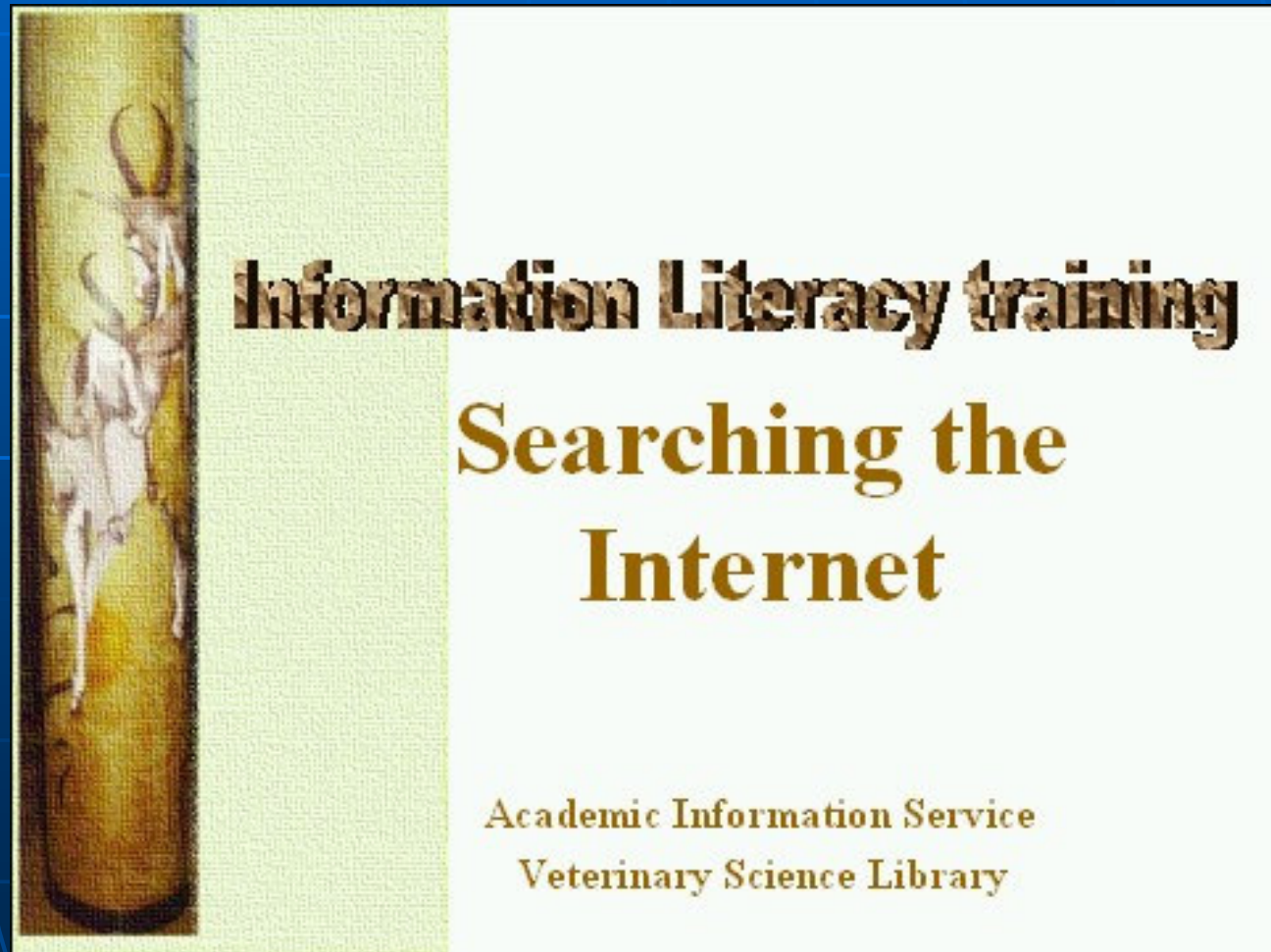
- Searching free relevant animal health sites
- To equip them with effective searching techniques
- To keep-up-to-date in their field as practitioners in the future

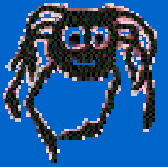




Teaching aids

- Powerpoint presentation
- Handouts
- Exercises





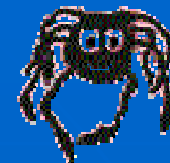
Content 1

- Search tools
 - subject gateways
 - web directories
 - search engines
- Search tips



Content 2

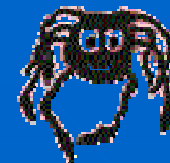
- Optimising relevance
 - Course content is linked to study areas covered in final year
 - Veterinary Public Health
 - Companion Animal Medicine
 - Production Animal Studies



Content 3

- Animal health related sites – a selection of the best
 - VetGate,
 - IVIS,
 - OIE,
 - FAO,
 - WHO

The screenshot shows the VetGate website. At the top right is the VetGate logo with the tagline "The UK's gateway to high quality Internet resources in Animal Health". Below this is a navigation bar with links: SEARCH, BROWSE, ABOUT, WHAT'S NEW, SUBMIT, TRAINING, SITE MAP. On the left side, there is a vertical menu of gateway logos: OMNI, NMAP, VETGATE (highlighted), BIORES, NATURAL, and AGRIFOR. Below this menu is a logo for "a service of the R-D-N". At the bottom left, it says "THE WELLCOME GATEWAYS" and lists BioethicsWeb, MedHist, and psci-com. The main content area has a heading "Welcome to VetGate" and a paragraph: "VetGate offers free access to a searchable catalogue of quality reviewed Internet resources in Animal Health. New resources are added to the database on a weekly basis. [New additions]". Below this is a search box with a "Search" button and links for "Advanced" and "Help". A paragraph follows: "Enter a keyword in the search box above to search VetGate, or use the [browse](#) option to browse for resources by subject." Another paragraph says: "Select one of the BIOME gateways on the left hand side of the screen to find Internet resources in other areas of the life sciences. Select the BIOME logo or [Advanced Search](#) to perform a wider search across all of BIOME's subject gateways." Below this is a survey notice: "Your feedback is valuable. Complete our user survey for a chance to win one of **six £30 Book tokens or Amazon gift vouchers**. See <http://biome.ac.uk/questionnaire/> for details." At the bottom, there are two sections: "Additional Services" with a link to "Internet Vet tutorial" and "VetGate Hosted Services" with a link to "AHIS - Animal Health".



Content 4

Free databases

- Pubmed
- Agricola

Consultant

- (diagnostic info)

National Agricultural Library **Article Citation Database AGRICOLA**

NAL Catalog
Includes books, serials, audiovisuals, and other resources.

Article Citation Database
Includes journal articles, book chapters, short reports, and reprints. See [Journals Indexed in AGRICOLA](#).

Quick Search: (enter single word or phrase)

More search options:
[Search ...](#) by keyword using forms and menus
[Browse ...](#) by author, title, or subject

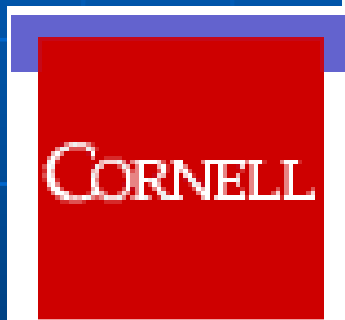
Quick Search: (enter single word or phrase)

More search options:
[Search ...](#) by keyword using forms and menus
[Browse ...](#) by author, title, or subject

at Once
th databases simultaneously.

[What is AGRICOLA?](#) | [Help](#) |

sent to the [AGRICOLA Mailbox](#).



College of
Veterinary
Medicine

NCBI **PubMed** National Library of Medicine NLM

Entrez PubMed Nucleotide Protein Genome Structure OMIM

Search PubMed for

Limits Preview/Index History Clipboard Details

- Enter one or more search terms, or click [Preview/Index](#) for advanced searching.
- Enter [author names](#) as smith jc. Initials are optional.
- Enter [journal titles](#) in full or as MEDLINE abbreviations. Use the [Journals Database](#) to find journal titles.

PubMed, a service of the National Library of Medicine, includes over 15 million citations for biomedical articles back to the 1950's. These citations are from MEDLINE and additional life science journals. PubMed includes links to many sites providing full text articles and other related resources.

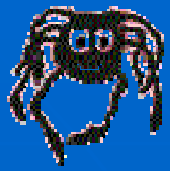
Bookshelf Additions **MeSH Database Updated**

Molecular Biology of the Cell, 4th Ed. and *The Genetic Landscape of Diabetes* are now available for interactive searching on the [Bookshelf](#).

Over 140,000 Supplementary Concept Records (substance names) have been added to the [MeSH database](#) so the database now contains the full MeSH vocabulary. MeSH terms can be used in PubMed searches.

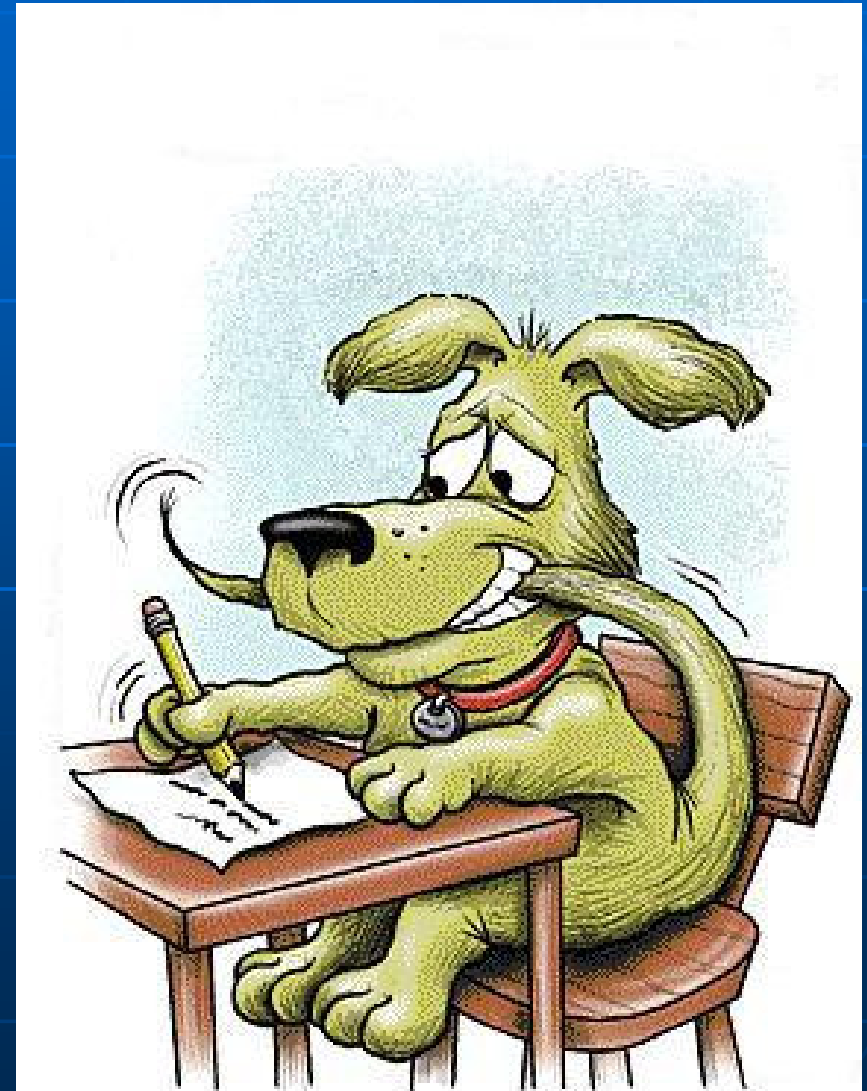
New Global NCBI Search Engine

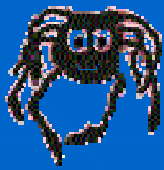
NCBI's growing number of Entrez databases can now be searched at once! [Go](#)



Content 5

- How to cite Web resources
- Evaluation of Web resources





Exercises

■ Example

A WEB SEARCHING ACTIVITY

Practice your search strategies and share your insight with others by completing this activity.

Pick one of these topics to search:

- A general site about conservation in Africa
- A page with information about Sir Arnold Theiler
- A site containing facts on endangered species from around the world
- Information on Genetically Modified (GM) Foods
- A page with links on caring for pets

Pick one or more search tools to use for your search, e.g.

- Yahoo
- Alta Vista
- Google
- Infoseek
- Excite

After doing the search, complete the following questions:

Topic of search

What search tools did you use?

How long did it take to find what you were looking for?

What search words did you use to start with?

Did you have to revise your search words? Why?

What were the most successful search words?

What's the address of the page you found?

Describe the steps you took to find this page

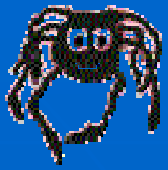
How satisfied were you with the page you found? How well did it fit what you were looking for?

How well do you think your chosen search tool is for your search?

Why?

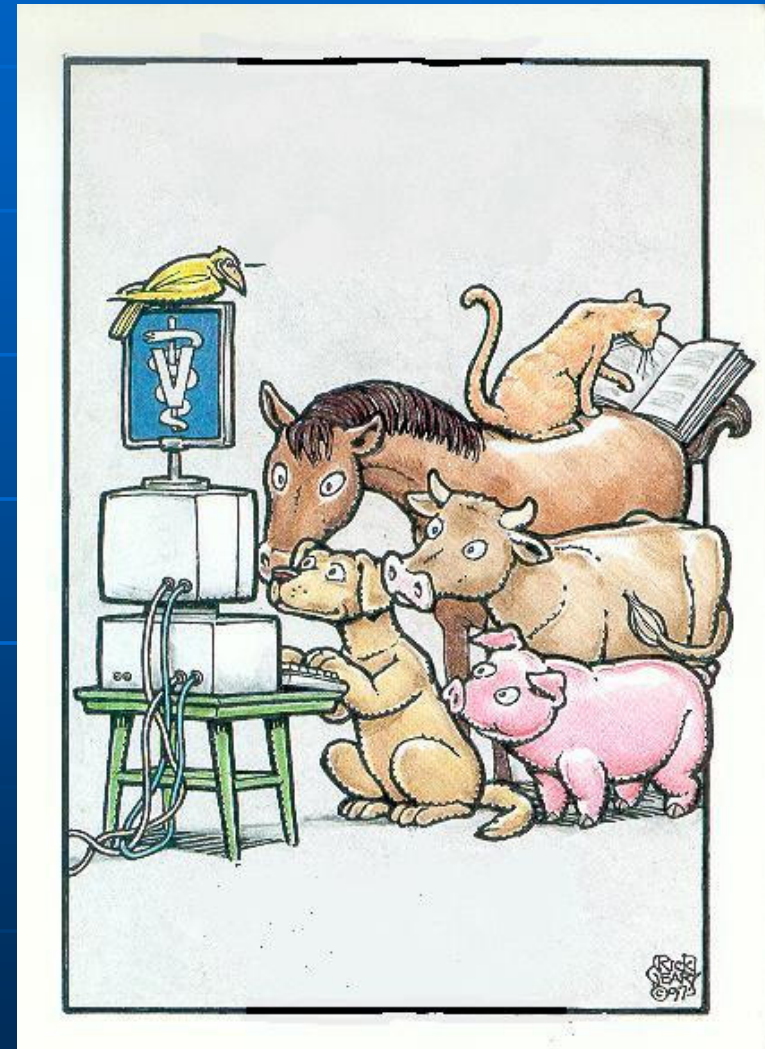
What was the most frustrating thing you encountered in your searching?

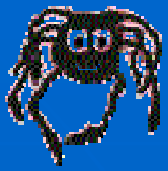
Any other remarks?



How it is presented

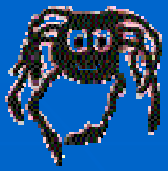
- Groups of 9
- Hands-on, in the Computer Lab
- 2 hours duration
- Exercise is done individually
- Feedback is given through the exercise
- Certificate awarded





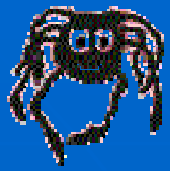
Support of Faculty

- Clinical rotation in BVSc VI year
- Attendance is compulsory
- Report given to Director, Clinical Services



Full Course content

- Introduction
- Search tips
- Search tools
 - Subject gateways
 - Web directories
 - Search engines
- Subject tools for Animal Health e.g.
 - Animal health gateway : VetGate
 - BIOME
 - Consultant (Cornell University)
 - Free Databases :
 - Agricola
 - Pubmed
 - E-Books e. g.
 - Merck Veterinary Manual



Full Course content(cont)

- Electronic Zoo
- Slide collections –
 - e.g. Bristol Biomed Image Archive
- Tutorials for practitioners
- Vetscite
- WHO
- Zoonosis websites
- **Evaluating web resources**
- **How to cite resources**

BIOMED
IMAGE ARCHIVE

Login

Home
About the Archive
Research Resources
Terms and Conditions
MeSH 2004 Thesaurus
Help
FAQ

BRISTOL BIOMED
LEARNING AND TEACHING

Hosted at
ILRT

Welcome

Welcome to the BioMed Image Archive, the online image resource for learning, teaching and research in the biomedical fields.

Unfortunately Athens authentication on this system is not ready. The developers of the system and the Athens administration team are working on the problem. We apologise for any inconvenience.

Athens Registration System

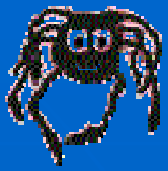
The BioMed Image Archive is now an Athens-controlled resource. Athens is a system of secure authentication that is used primarily in UK higher and further education institutions. In order to search for and download images you will now need an Athens username and password. If your institution subscribes to other Athens resources, you should already have a password, if not, one can be obtained from your institution's Athens administrator.

Archive users from outside the UK may find that they can no longer search the collection. However, your institution can register as an Athens organisation, further details can be found on the [Athens Web site](#).

The Archive maintains a publicly-accessible area on which can be found links to learning and teaching resources, research papers and project documentation such as licence agreements. All of these resources are freely available for use in learning, teaching and research.

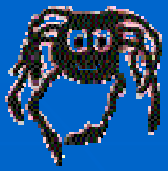
In order to use the BioMed Image Archive site, you need to login.

Please click on the login link above to begin.



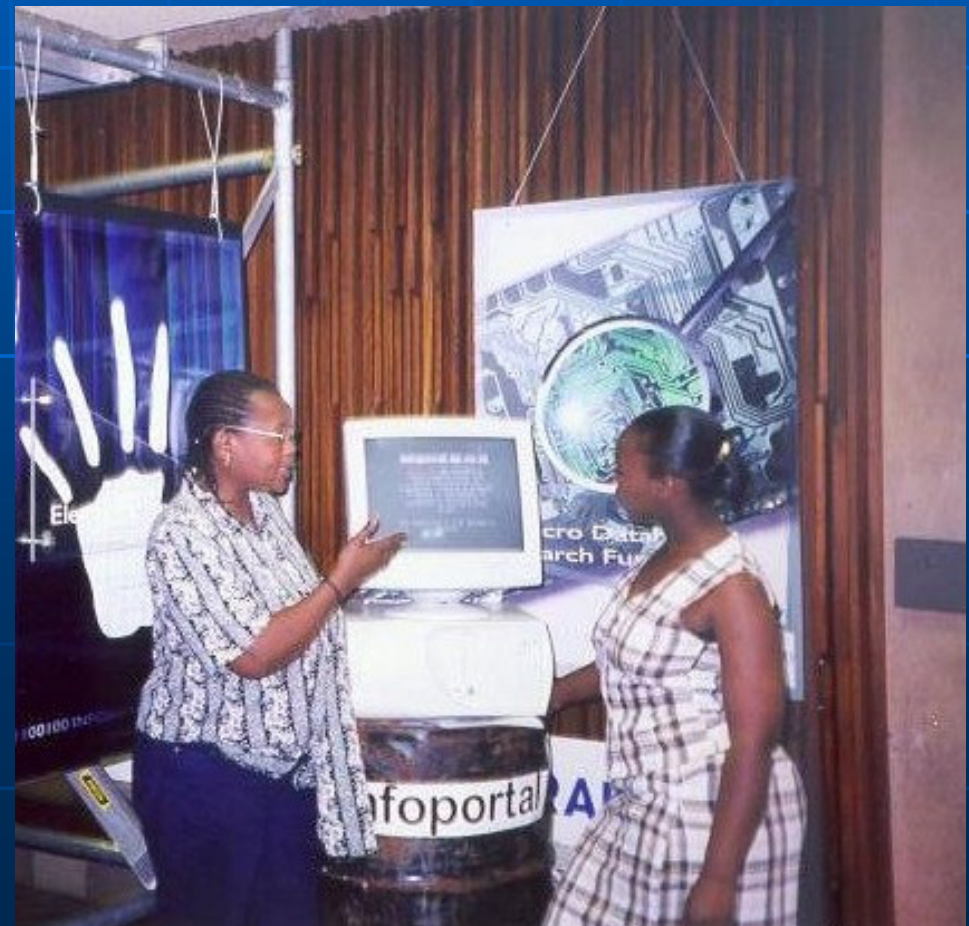
Conclusions

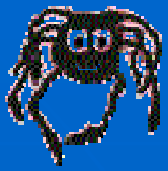
- Positive feedback
- Needed earlier in curriculum
- Google was the search engine most had used
- But knowledge of Google superficial
- Most animal health sites unknown to students



Conclusions (cont)

- Hands-on, face-to-face most effective
- Opportunity to re-enforce earlier training

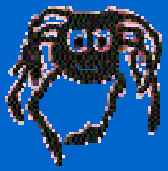




Future plans

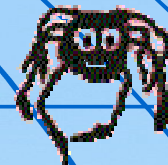
- Place course on the web (as backup)
- Lecturer assign task in Vet Public Health to strengthen the learning
- Present course at veterinary conferences, etc
- To support practitioners CPD

Should we be concerned? Will we be replaced?



- **No!**
- Google can only reach full potential when **Information Specialists** show the way





Thank You !!