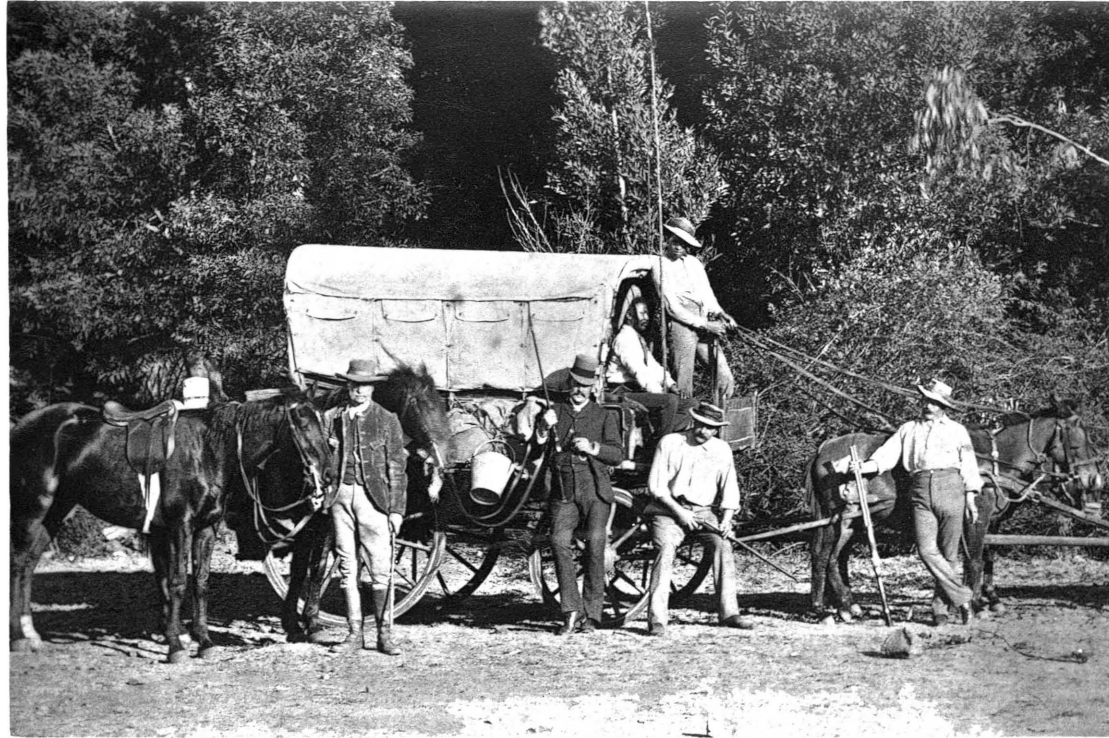


A
WINTER TOUR
IN
SOUTH AFRICA

By
Sir FREDERICK YOUNG K.C.M.G.

A WINTER TOUR IN
SOUTH AFRICA.



MY WAGON.

WINTER TOUR
IN
SOUTH AFRICA

BY
SIR FREDERICK YOUNG, K.C.M.G.

*(Reprinted by permission from the Proceedings of the Royal Colonial
Institute, with large additions, Illustrations, and a Map.)*

LONDON:
E. A. PETHERICK & CO.,
33, PATERNOSTER ROW, E.C.

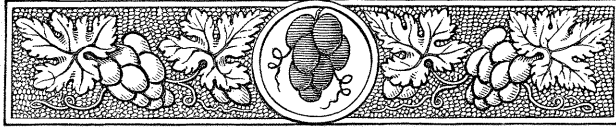
1890.

[ALL RIGHTS RESERVED.]

TO

HER ROYAL HIGHNESS, PRINCESS LOUISE,
MARCHIONESS OF LORNE,

**This Volume, describing a recent tour, during which
a large portion of Her Majesty's magnificent
Dominions in South Africa were traversed,
is, by gracious permission, dedicated
with feelings of sincere
respect.**



INTRODUCTION.

THE growth of the great Colonies of the British Empire is so phenomenal, and their development is so rapid, and remarkable, that if we are to possess a correct knowledge of their actual state, and condition, from year to year, their current history requires to be constantly re-written.

The writer of a decade since, is, to-day, almost obsolete. He has only produced a current record of facts, and places, at the period he wrote. This is especially the case with South Africa.

I have recently returned from a very interesting tour in that remarkable country. My impressions were noted down, as they occurred, from day to day. A summary of my observations,

and of the incidents, in connection with my journey, was the subject of a Paper I read at the opening meeting of the present Session of the Royal Colonial Institute, on the 12th of November last. I wish it to be understood that the opinions expressed on that occasion were my own, and that the Institute as a body is in no way responsible for them. This Paper has formed the outline of the volume, which—with much new matter from my note book—I now offer to the public, in the belief, that the narrative of a traveller, simply seeking instruction, as well as amusement, from a few months tour, while traversing some 12,000 miles by sea, and 4,000 miles by land, through the wonderful country in which he lately roamed, might prove of some use, in awakening additional interest on the part of the general public, to one of the most promising, and valuable portions of the Colonial Empire.

In this spirit, I offer my "Winter Tour in South Africa," to my countrymen, "at home and beyond the seas," in the hope that it may receive from them, a favourable reception.

On the "Political Situation," I have spoken strongly and frankly, I hope not too much so. The result of my personal observations has convinced me, that I have only correctly expressed the opinions, very widely entertained by large classes of Her Majesty's subjects in South Africa.

I cannot conclude without acknowledging the aid I have derived from the Statistical information contained in the "Argus Annual," and it also affords me much pleasure to thank Mr. James R. Boosé, the Librarian of the Royal Colonial Institute, for the assistance he has rendered me.

FREDERICK YOUNG.

5, Queensberry Place, S.W.

1st January, 1890.

LIST OF ILLUSTRATIONS.

	PAGE.
MY WAGON	<i>Frontispiece.</i>
GOVERNMENT HOUSE, CAPETOWN	<i>facing</i> 6
PARLIAMENT HOUSE, CAPETOWN	” 8
JOHANNESBURG, MARKET PLACE	” 57
CEMETERY, MAJUBA HILL	” 81
GOVERNMENT HOUSE, MARITZBURG	” 83
A STREET IN MARITZBURG	” 84
TOWN HALL, DURBAN	” 86
HARBOUR WORKS, DURBAN	” 89
HEX RIVER PASS	” 107

CONTENTS.

	PAGE
DEDICATION	v.
INTRODUCTION	vii.
THE VOYAGE.—Embark at Southampton—Amusements at Sea —Lisbon—Madeira—Teneriffe—St. Helena— Longwood—Arrival at Cape Town	1-4
CAPE TOWN.—Queen's Birthday—Review of Troops—Regatta— Table Bay—Table Mountain—Hotels—House of Parliament—Observatory—South African Museum—Public Library—Botanic Gardens— Record Office—Places of Worship—Harbour Works and Breakwater—Graving Dock—Simon's Town—Kalk Bay—Constantia—Wynberg— Journey to Kimberley	5-21
KIMBERLEY.—Address of Welcome from the Fellows of the Royal Colonial Institute—Diamond Industry— Bultfontein Mine—DeBeer's Mine—Compounds —United Companies—Central Kimberley Diamond Mine—Kimberley Hospital—Progress of Kimberley—Town Hall—Post Office—High Court—Public Library—Waterworks— <i>En route</i> for Bechuanaland—Wagon Travelling—Warren- ton—Drake's Farm	22-38
BECHUANALAND.—Scenery—Field for Settlement—Vryburg— Lochnagar Farm—Prospect of Gold Discovery ..	39-46
KLERKSDORP.—Nootgedacht Mine—Pan Washing—Klerksdorp Gold Estates Company—Future of Klerksdorp ..	47-49
POTCHEFSTROOM.—Wagon Journey—Presence of Gold-bearing Reefs—Vultures—Fort and Cemetery—Chevalier Forssman	50-52
JOHANNESBURG.—Difficulties of Travelling—Appearance of the Town—Gold—Knights—The Jumpers—Robin- son's—Langlaagte—Descent to the Mines— Market Square—Growth of Johannesburg— Sanitary arrangements	53-59

	PAGE
PRETORIA.—Water Supply—The Volksraad—President Paul Kruger—High Court of Justice—Want of Railroads—Growing Prosperity—Post Office—New Government Buildings—Political and Social Life—Pretoria Races	60-65
WATERBURG. — Polonia — Hebron — Salt Pans — Kafirs — Appearance of the Country—Prospects of Gold—Scarcity of Game—Bush Fire—Narrow Escape—Transport Driver—Waterburg Sulphur Baths—Nylstroom Road—Return to Pretoria	66-78
PRETORIA TO NATAL.—Coach to Johannesburg—Post Cart Travelling—Richmond—Heidelberg—Stander-ton—Newcastle—Eland's Laagte—Natal Rail-way—Coal Fields—Laing's Nek—Majuba Hill—Ingogo—Scenery of Natal	79-82
MARITZBURG.—Public Buildings—House of Assembly—Statue of the Queen—British Troops	83-84
DURBAN.—Railway Journey—Town Hall—Municipal arrange-ments—Trade—Harbour Works—The "Berea"—Natal Central Sugar Company's Manufactory — Trappist Establishment at Marion Hill — Defences—Embark for Port Elizabeth	85-96
PORT ELIZABETH.—Trade—Town Hall—Public Library—Ostrich Feathers — The "Hill" — Botanical Garden—Hospital—Water Supply—Churches—Presentation of an address	97-101
GRAHAMSTOWN. — Railway Journey — Scenery — Botanical Gardens — Mountain Road — Museum — The Prison — Kafir School — Ostrich Farm at Heatherton Towers—Export of Feathers	102-105
PORT ELIZABETH TO CAPE TOWN.—Scenery—Hex River Pass—Arrival at Cape Town—Lecture at Young Men's Christian Society—Start for England—Arrival at Southampton	106-108
CLIMATE	109-112
THE NATIVE QUESTION	113-116
RAILWAYS	117-122
COLONISATION	123-127
THE POLITICAL SITUATION	128-148
APPENDIX :—	
I. Discussion on a Paper entitled "A Winter Tour in South Africa," by Sir Frederick Young, at the Royal Colonial Institute.	149-163
II. Lecture on Imperial Federation delivered at Cape Town	164-173