

ANAPLASMOSIS.

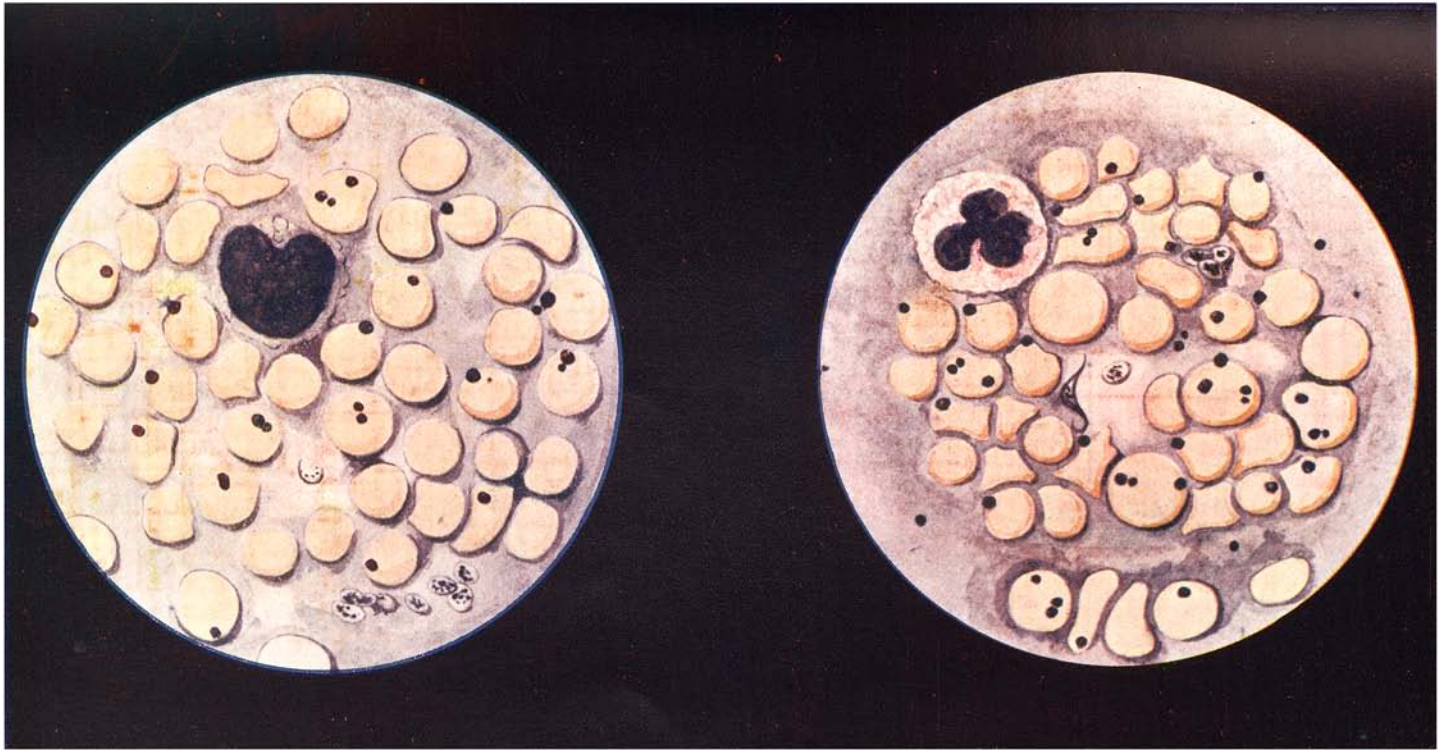


Fig. 1.

Fig. 2.

ANAPLASMOSIS.

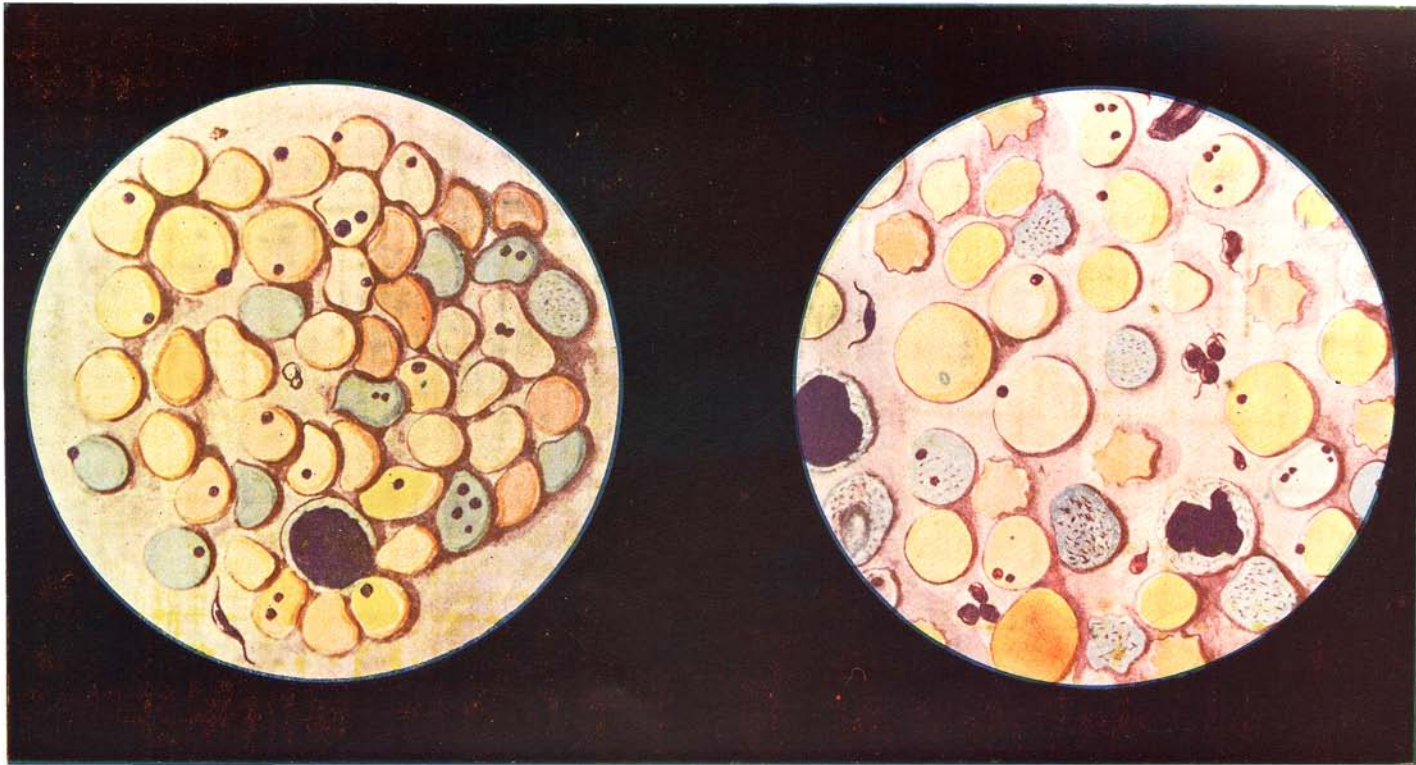


Fig. 3.

Fig. 4.

ANAPLASMOSIS.

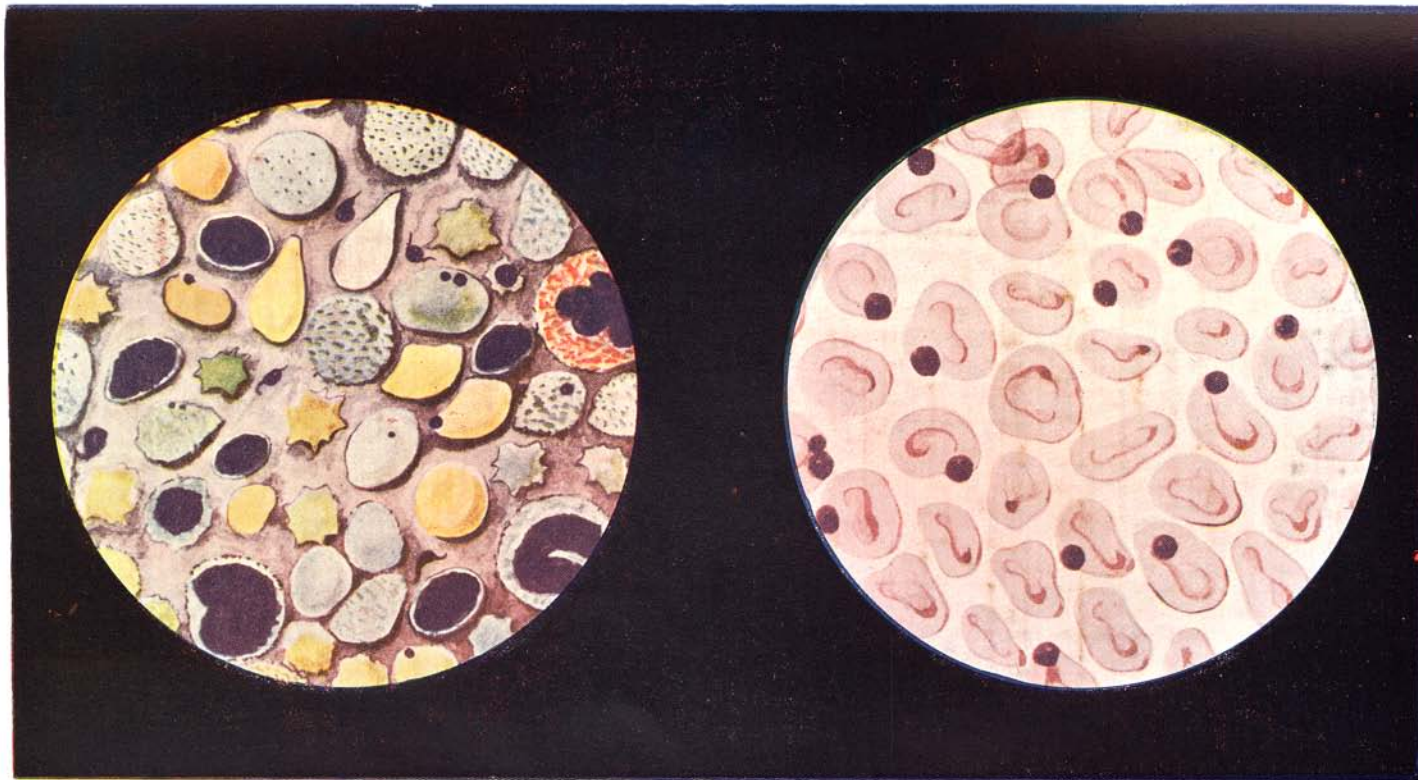


Fig. 5.

Fig. 6.



ANAPLASMOSIS.

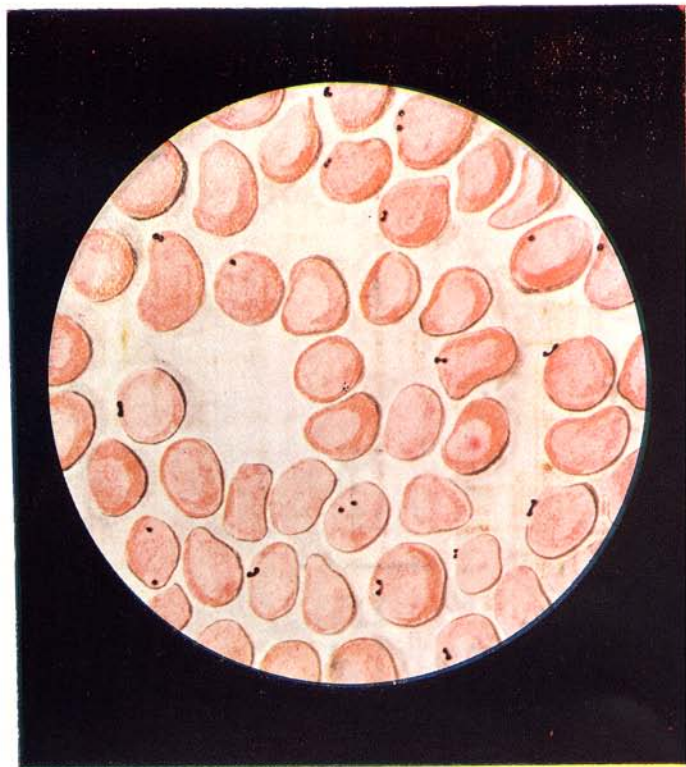


Fig. 7.

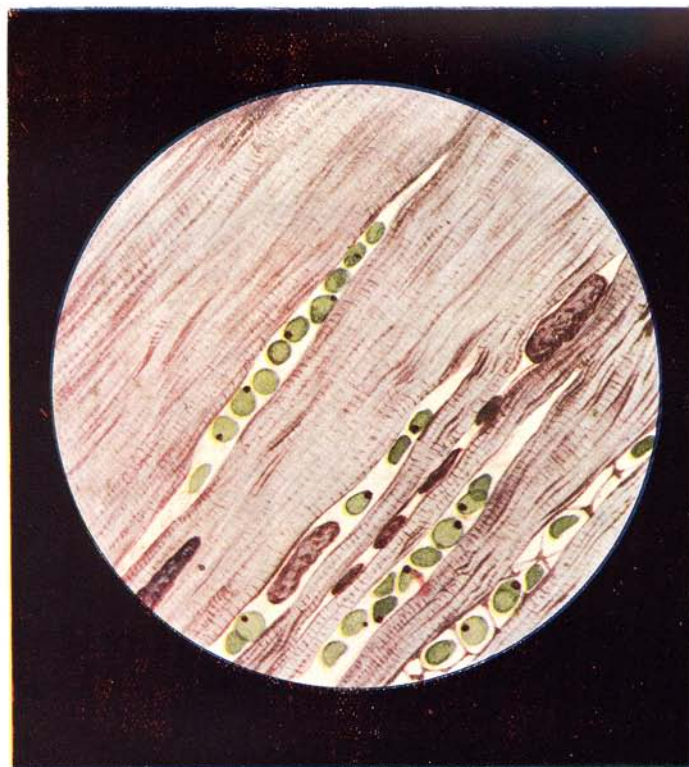


Fig. 8.

DEPARTMENT OF AGRICULTURE VETERINARY BACTERIOLOGICAL DIVISION.

A.D. 200.

ANIMAL

*Calf*

No. *894*

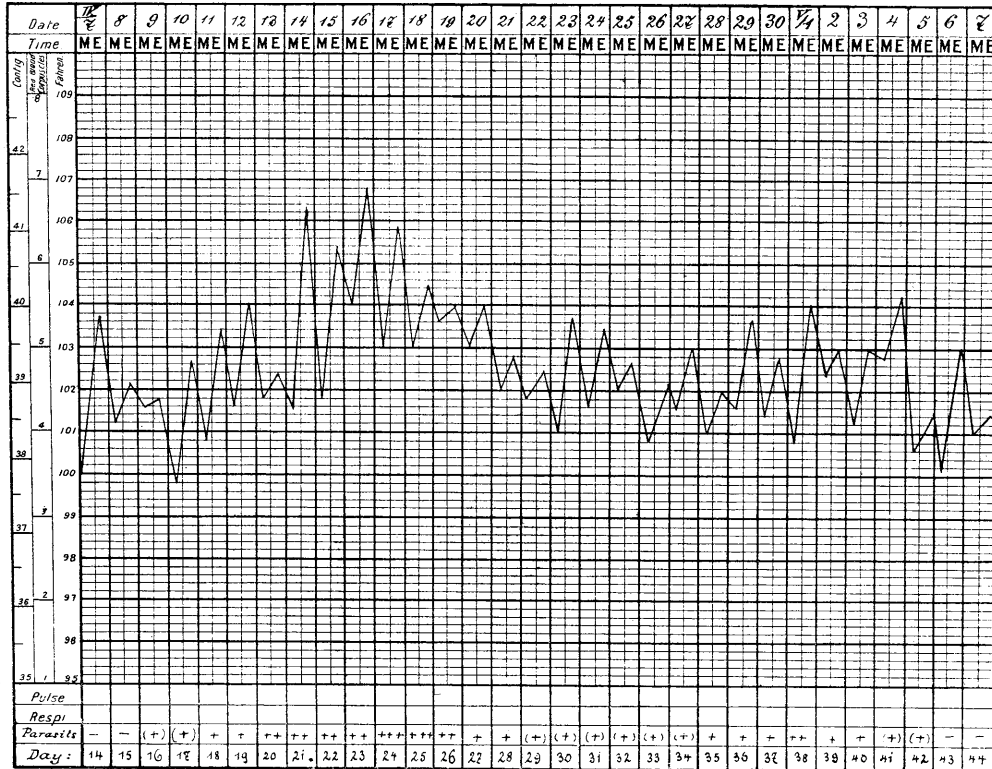
injected subcut. w.

*20 ccm. fresh bl. Hoef 98%.*

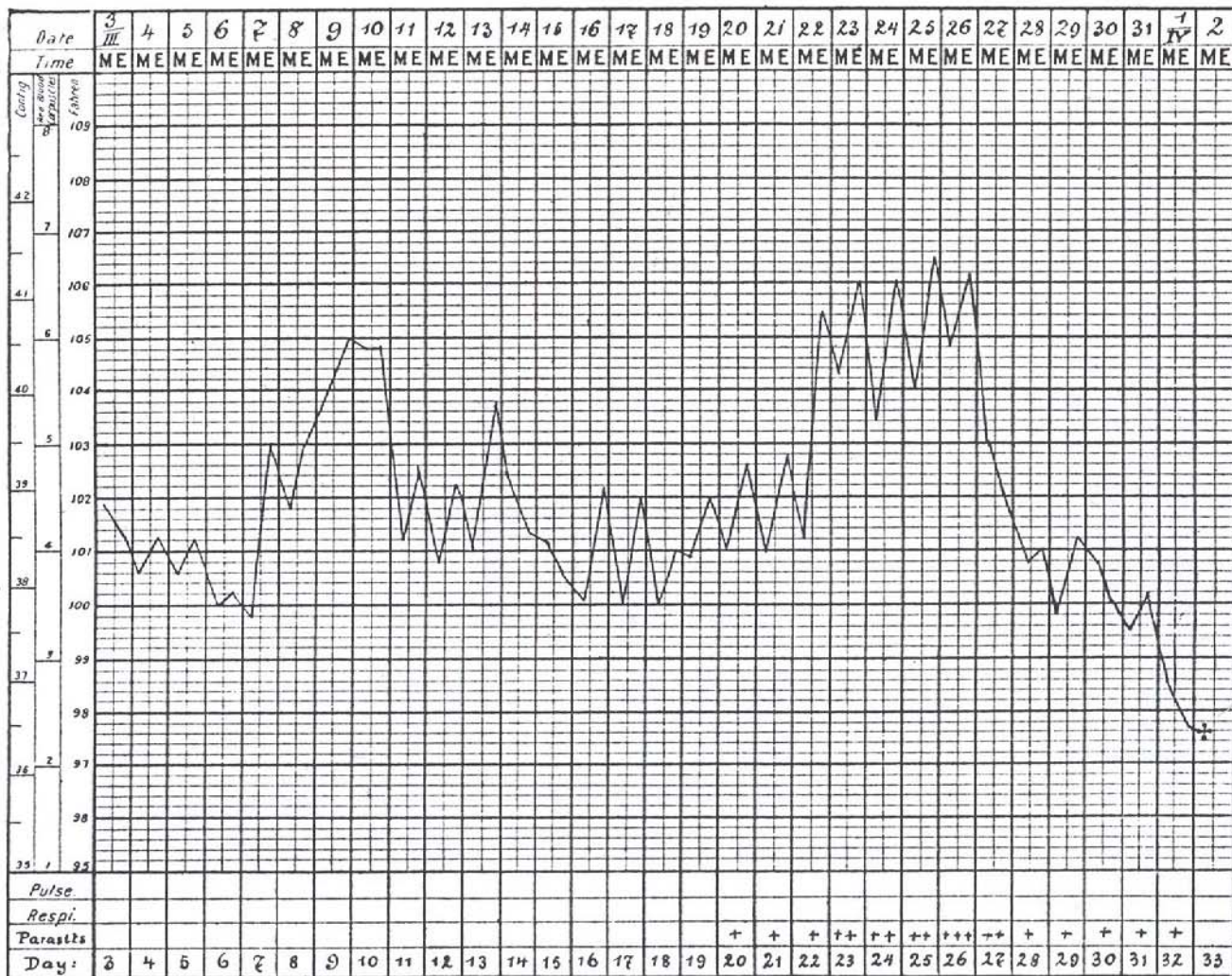
Date *24. III. 1910.*

Remarks

*Case of recovery from Anaplasmosis.*



*Anaplasma marginale* (Dr. H. Sieber).



ANIMAL

Heifer.

Nº 936

inject. subcut. m. 10ccm

fresh blood of calf 905

Date 28. II. 1910

Remarks

Case  
of  
Anaplasmosis  
Ending  
in death.

Anaplasma marginale (Dr. H. Sieber).